

CITY OF PORTLAND AND MULTNOMAH COUNTY

# CLIMATE ACTION PLAN 2009

YEAR TWO PROGRESS REPORT APRIL 2012



Bureau of Planning and Sustainability

Innovation. Collaboration. Practical Solutions.

City of Portland, Oregon  
Sam Adams, Mayor • Susan Anderson, Director

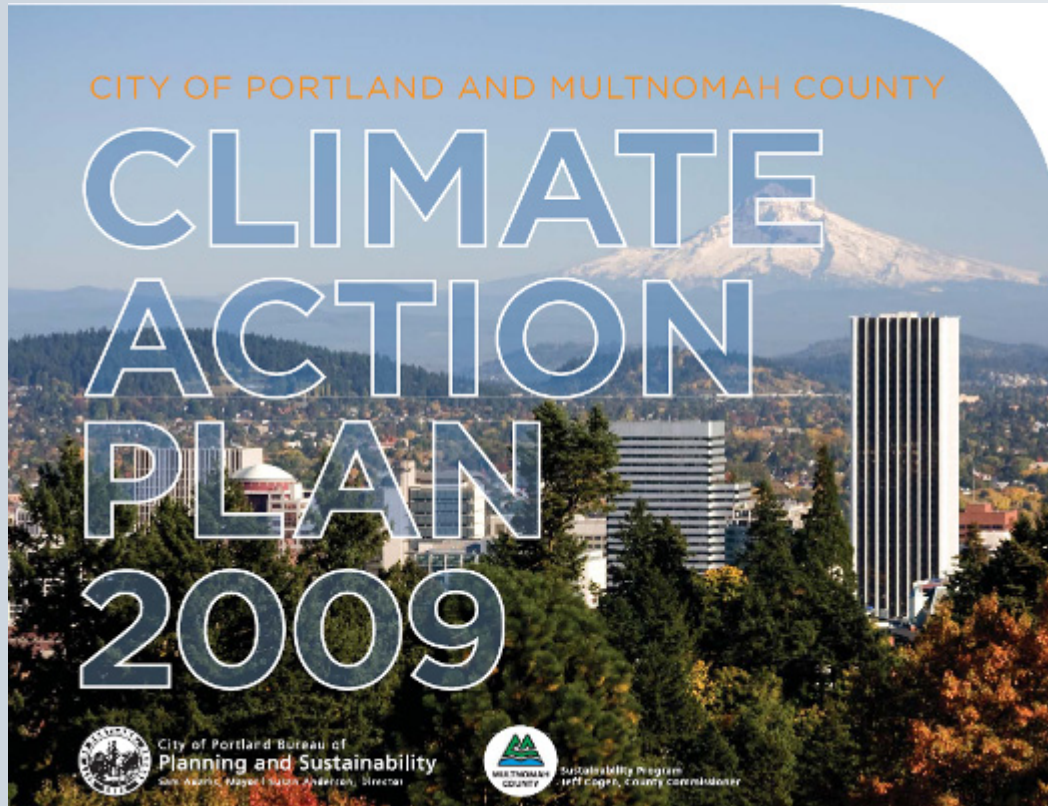


Office of Sustainability

Jeff Cohen, County Chair; Kat West, Director



# ***Climate Action Plan***



**Builds on prior plans  
from 1993 and 2001**

**2050 Goal:**

80% reduction in  
emissions from 1990

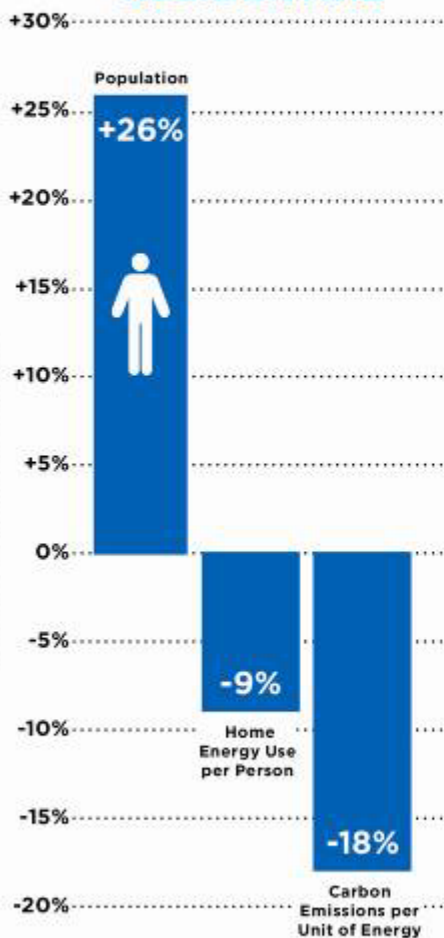
**2030 Interim goal:**

40% reduction

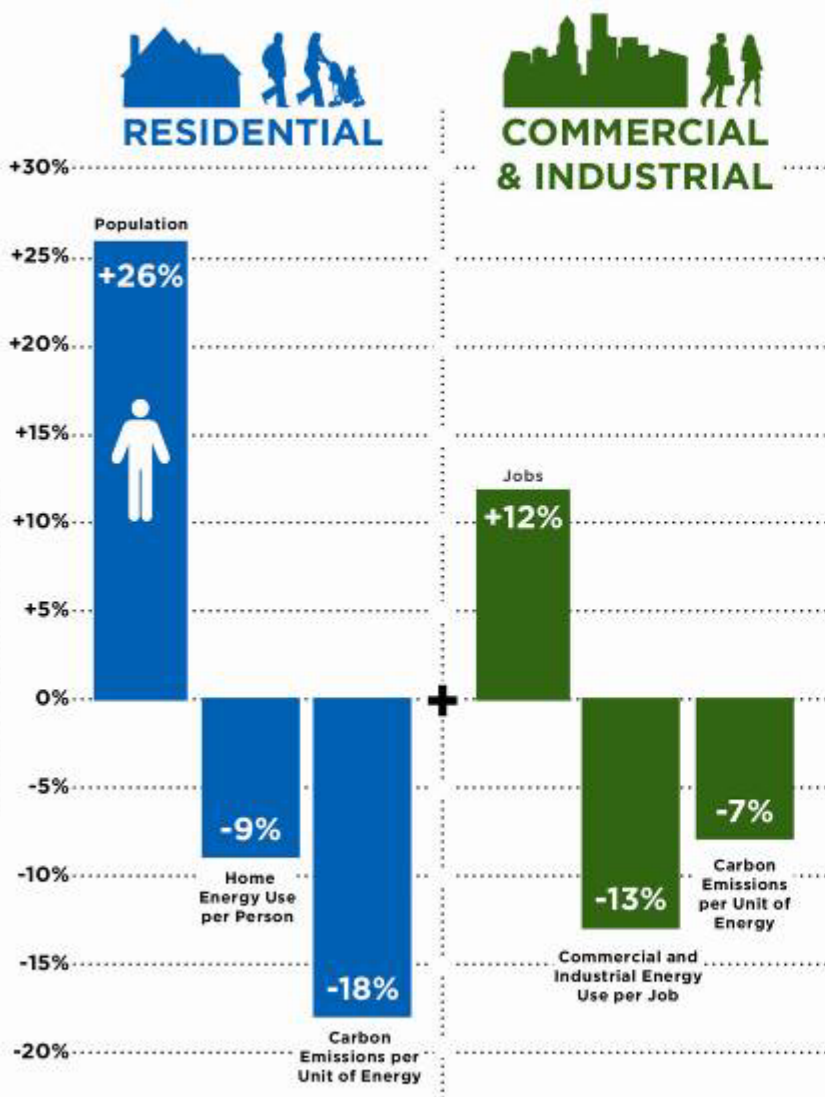
**2030 Objectives**

**2012 Actions**

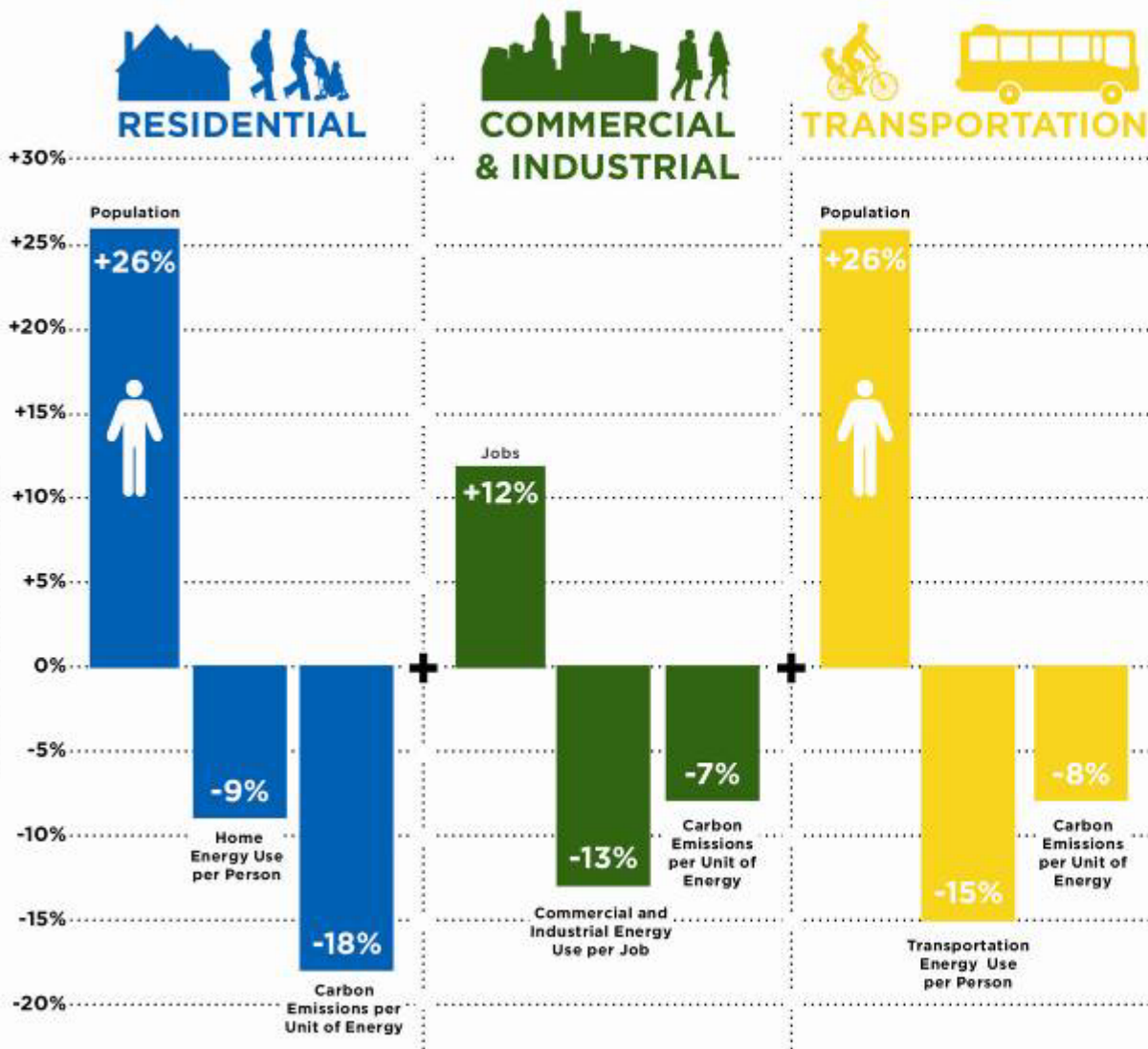
# COMPONENTS OF CARBON REDUCTION IN MULTNOMAH COUNTY 1990-2010



# COMPONENTS OF CARBON REDUCTION IN MULTNOMAH COUNTY 1990-2010

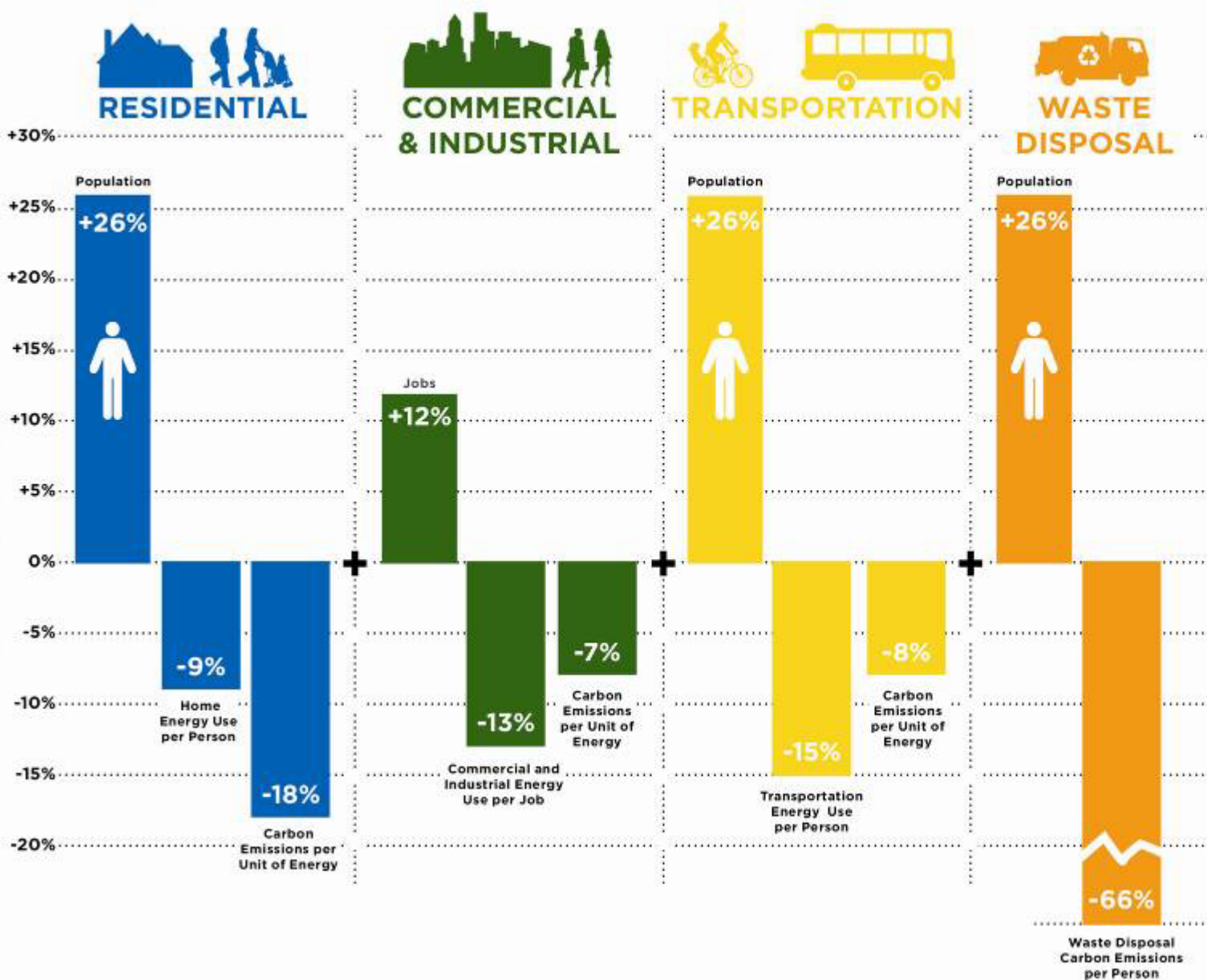


# COMPONENTS OF CARBON REDUCTION IN MULTNOMAH COUNTY 1990-2010

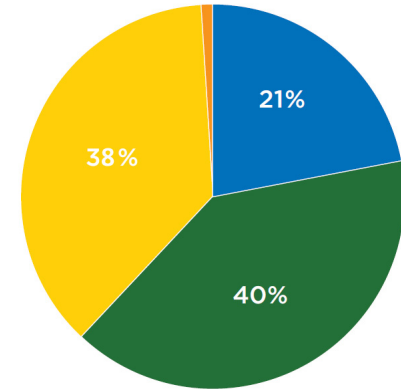
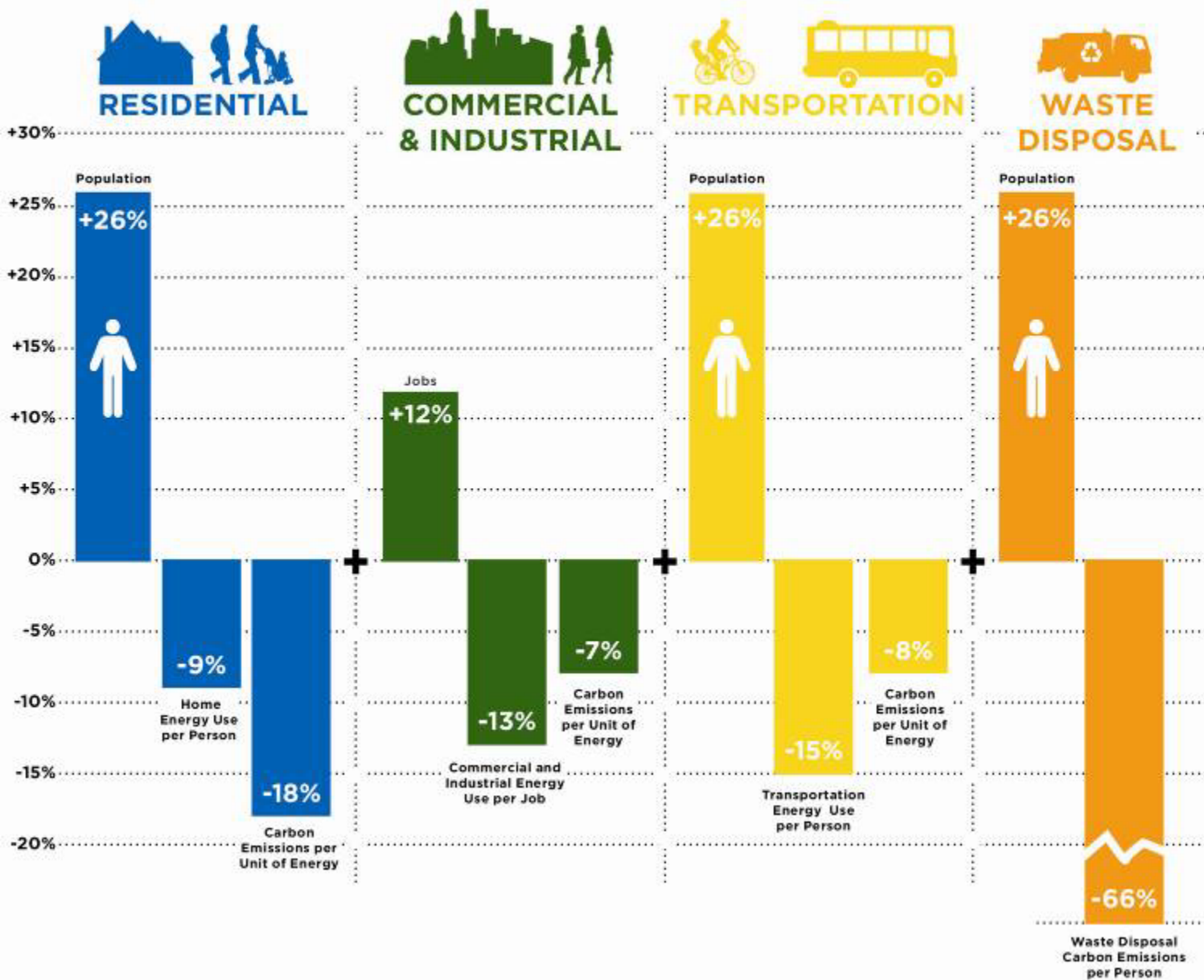




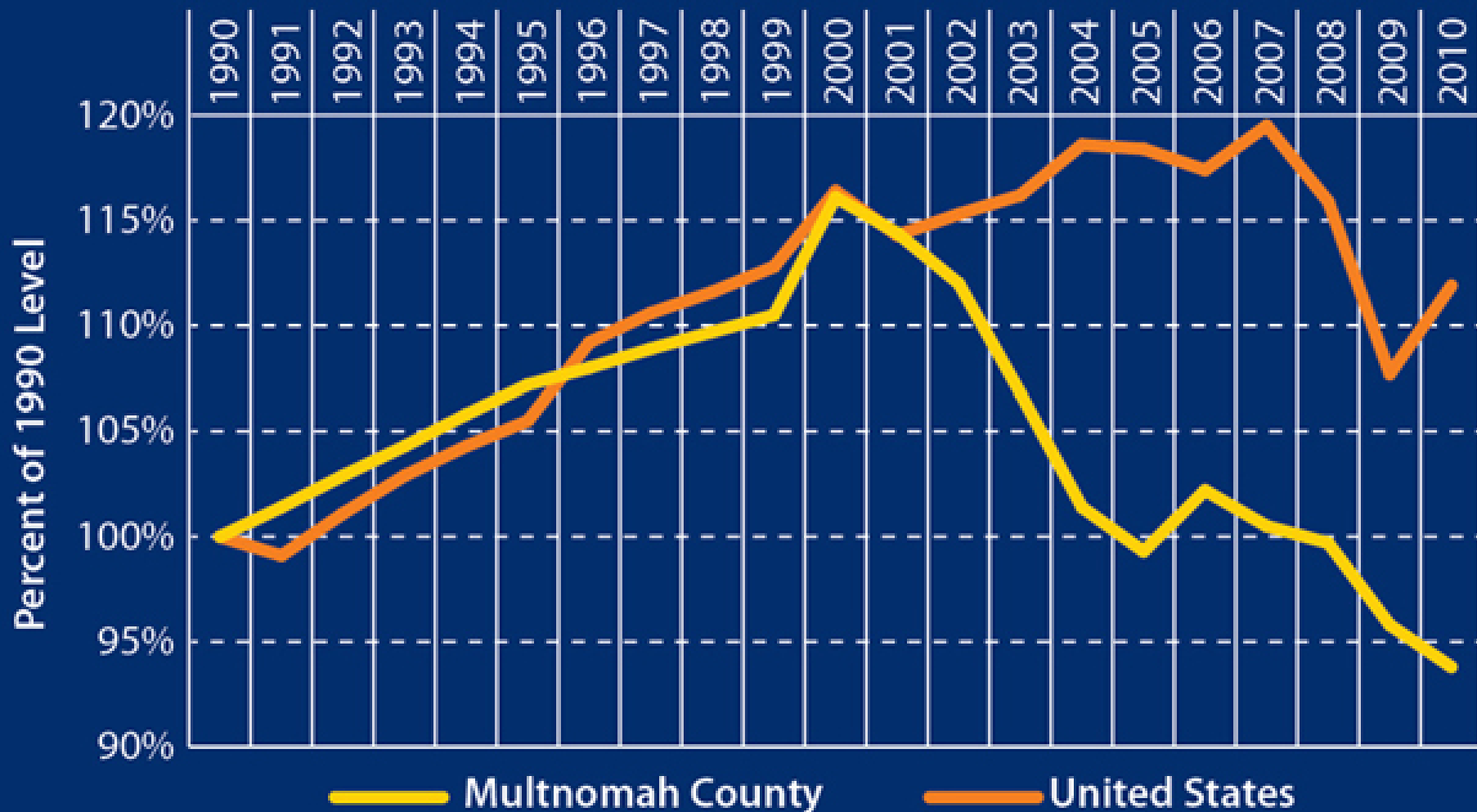
# COMPONENTS OF CARBON REDUCTION IN MULTNOMAH COUNTY 1990-2010



# COMPONENTS OF CARBON REDUCTION IN MULTNOMAH COUNTY 1990-2010



## CARBON EMISSIONS TREND



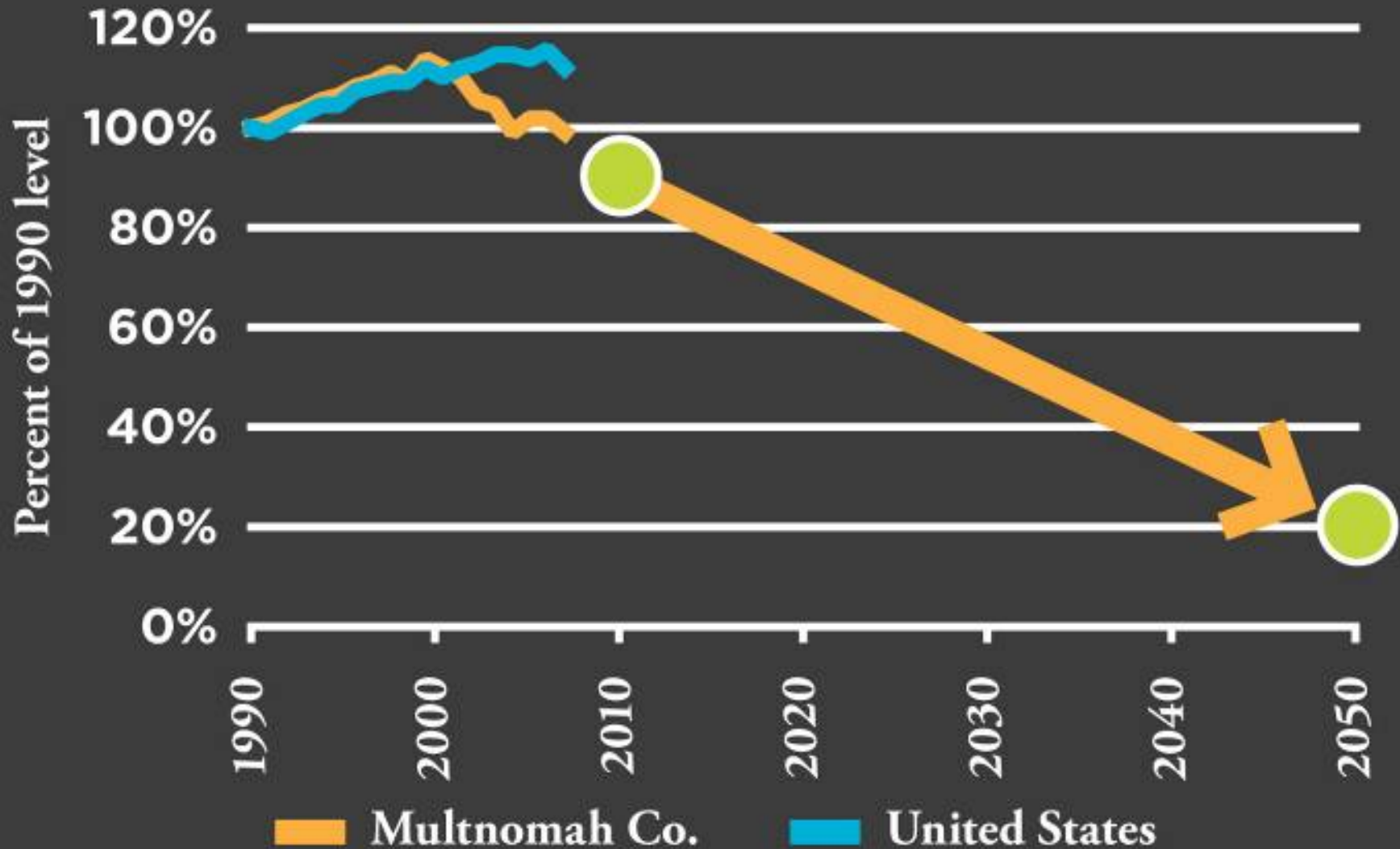
*Bureau of Planning and Sustainability and U.S. Energy Information Administration*





# 2050 Challenge

## Greenhouse gas emissions trend





# Eight Action Areas

1

BUILDINGS AND ENERGY

2

URBAN FORM AND MOBILITY

3

CONSUMPTION AND SOLID WASTE

4

URBAN FORESTRY AND NATURAL SYSTEMS

5

FOOD AND AGRICULTURE

6

COMMUNITY ENGAGEMENT

7

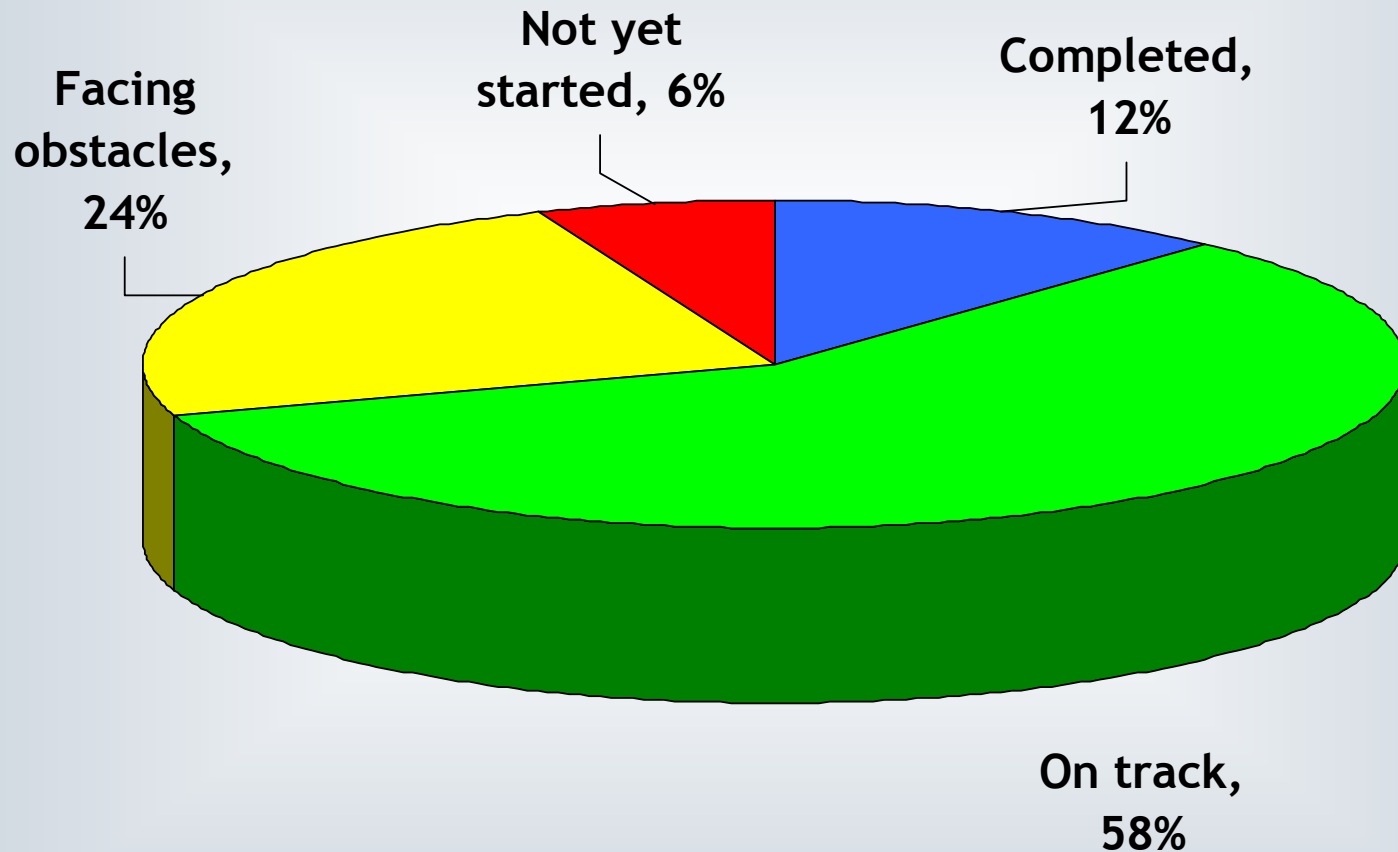
CLIMATE CHANGE PREPARATION

8

LOCAL GOVERNMENT OPERATIONS

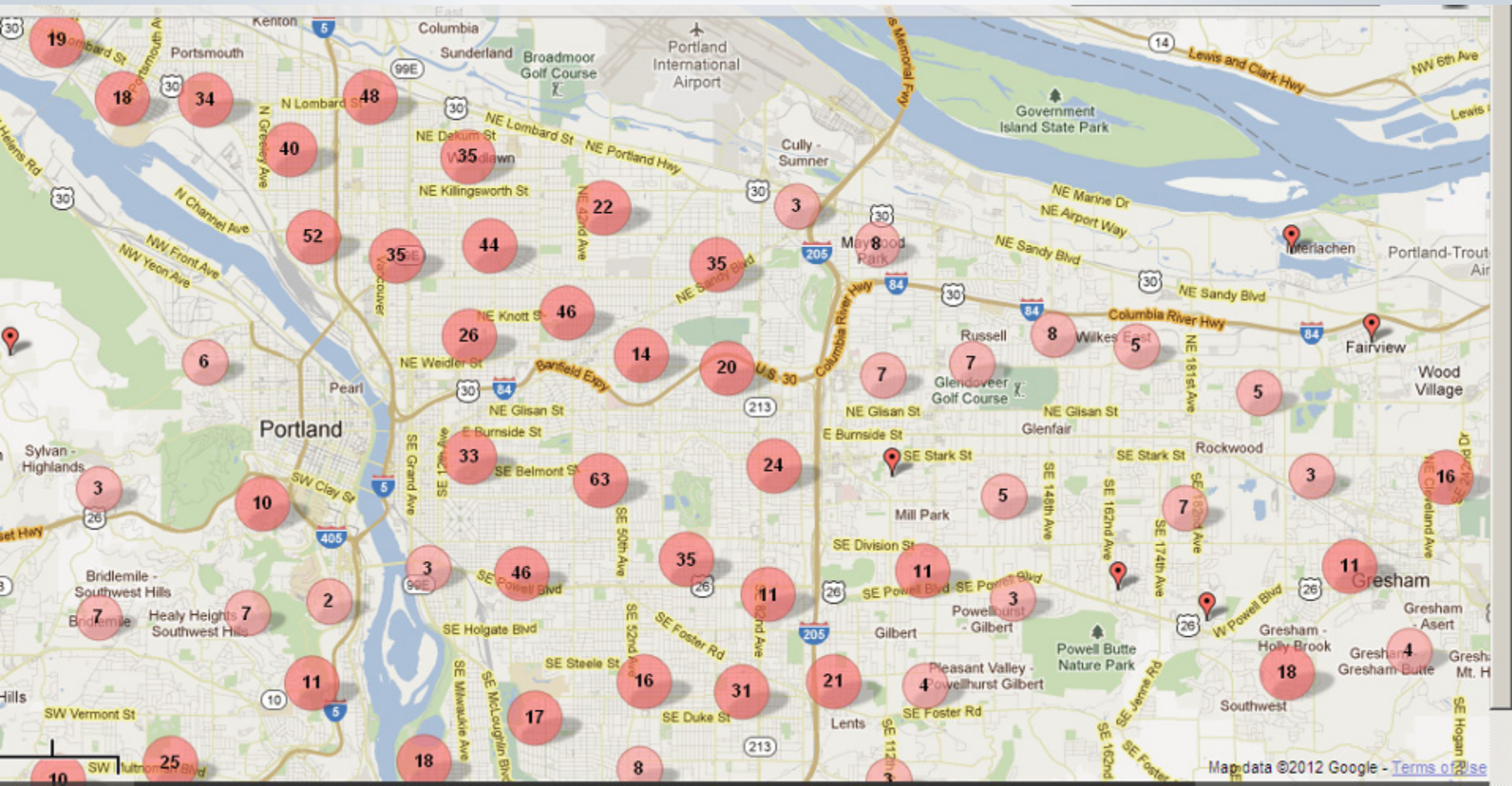


# Status of Climate Plan Actions





## ■ Clean Energy Works Oregon



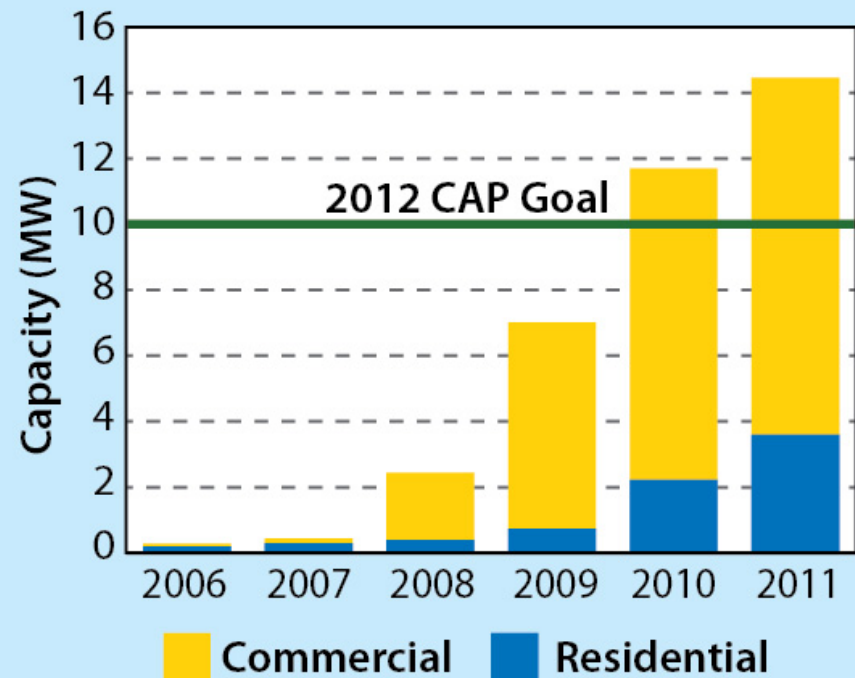




# BUILDINGS AND ENERGY

- Almost 15 MW of Solar!
- 2012 Actions
  - District energy in Rose Quarter
  - Commercial building performance benchmarking

## Total Installed Solar PV Capacity in Multnomah County







## URBAN FORM AND MOBILITY

- Healthy Connected City
  - Vibrant, walkable neighborhood centers
  - Connections for people, places, water and wildlife
  - Aligning housing and transportation investments
  - Neighborhood business vitality
  - Neighborhood greenways



# 2

## URBAN FORM AND MOBILITY

- Challenges
  - Funding maintenance and new projects
- 2012 Actions
  - Metro's Climate Smart Communities





# CONSUMPTION AND SOLID WASTE

- Public place recycling
- Food-scrap collection



- 2012 Actions
  - Expand commercial composting



## URBAN FORESTRY AND NATURAL SYSTEMS

- BES and PSU: Community Watershed Stewardship Program
- Parks: Protect the Best and No Ivy League programs
- Completed Citywide Tree Project code update.
- Portland Plan's Healthy Connected City strategy







# FOOD AND AGRICULTURE

- Urban Food Zoning Project
- 400 new urban garden plots



- 2012 Actions
  - Food zoning code, goals, and city purchasing guidelines





# COMMUNITY ENGAGEMENT

## ■ Portland Climate Action Now!

## ■ ReTHINK

### PORTLAND CLIMATE ACTION NOW!



[Home](#) [Healthy Home](#) [Getting Around](#) [Your Stuff](#) [Food Choices](#) [Climate 101](#)

[PDR](#) — [Government](#) — [Special Projects](#) — [Portland CAN!](#)

#### Recent Articles

[Getting Around: Peer-to-Peer Car Sharing Coming to Portland](#) - A new generation of car sharing allows neighbors to share their cars, and make money doing it.

[Healthy Home: Seasonal Greetings!](#) - Holiday greetings from the Green Building Team at BPS.

[Your Stuff: Rethinking the Holidays](#) - Make new memories by rethinking all aspects of your holiday season.

[Food Choices: What You Eat Affects the Climate](#) - Choosing local meat and dairy can help shrink your carbon footprint.



Portland Climate Action Now! is here to help you reduce your carbon emissions and make a real difference on climate change in four key areas: [Healthy Home](#), [Getting Around](#), [Your Stuff](#) and [Food Choices](#).

By taking action today, together we can reach our goal of 80 percent reduction in carbon emissions by 2050.

#### Follow Us



[Subscribe to Portland CAN! RSS](#)





# CLIMATE CHANGE PREPARATION

- Built infrastructure
- Natural resources
- Health and human services



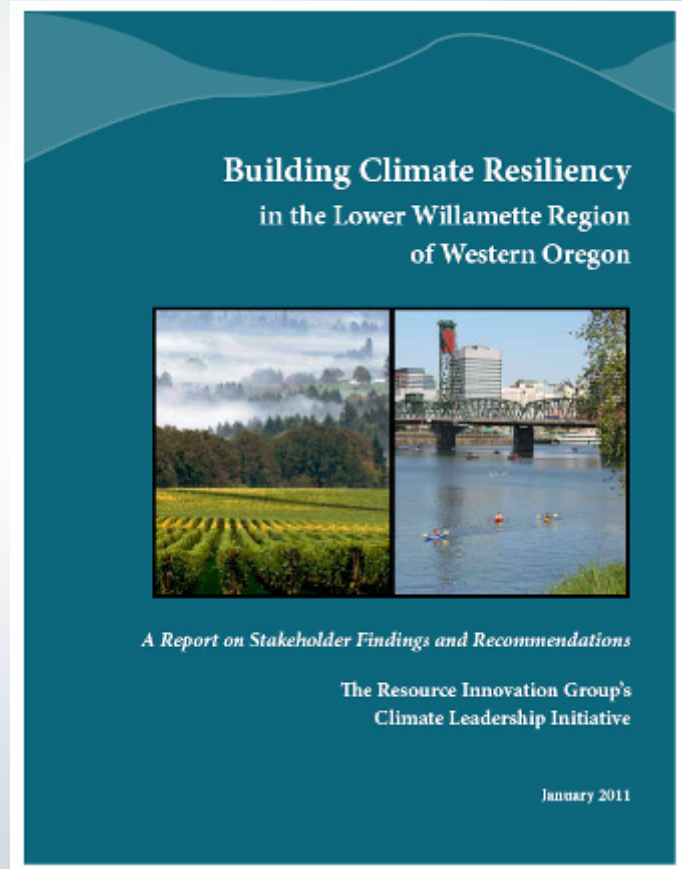


# CLIMATE CHANGE PREPARATION

## ■ Regional collaboration



***Climate Future Forums***  
**Input from 200 local stakeholders**







# LOCAL GOVERNMENT OPERATIONS

- City Energy Challenge
  - \$5.5 million in savings each year
  - \$42 million total saved since 1991
- City baseline waste recovery rate
  - 48% for buildings
  - 30% for public places
  - 74% for operations





CITY OF PORTLAND AND MULTNOMAH COUNTY

# CLIMATE ACTION PLAN 2009

YEAR TWO PROGRESS REPORT APRIL 2012



Bureau of Planning and Sustainability

Innovation. Collaboration. Practical Solutions.

City of Portland, Oregon  
Sam Adams, Mayor • Susan Anderson, Director



Office of Sustainability

Jeff Cohen, County Chair; Kat West, Director