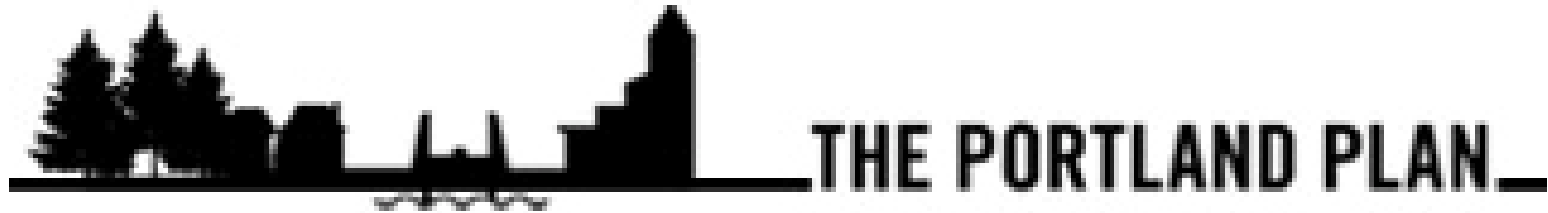




Neighborhood Prosperity Initiative Planning and Sustainability Commission March 13, 2012

Policy Context



Neighborhood Economic Development

NED Accomplishments: Year 1



- ✓ Established NED Leadership Group
- ✓ Continued Portland Main Street Program
- ✓ Created Small Business Technical Assistance Program
- ✓ Released New Microenterprise Development RFP
- ✓ Aligned existing PDC Programs with NED Strategy
- ✓ Established CBA with SoloPower
- ✓ Partnered with Craft3 to make \$1.5M in working capital available
- ✓ Launched Neighborhood Prosperity Initiative

Neighborhood Prosperity Initiative (NPI)

Community Driven, Community Implemented:

- Builds on Main Street model
- “On the ground” district staff
- PDC in dual role as grant administrator & partner
- Tax Increment Revenue is one of a number of important tools



NPI Districts: Expected Outcomes

Within each Commercial Corridor:

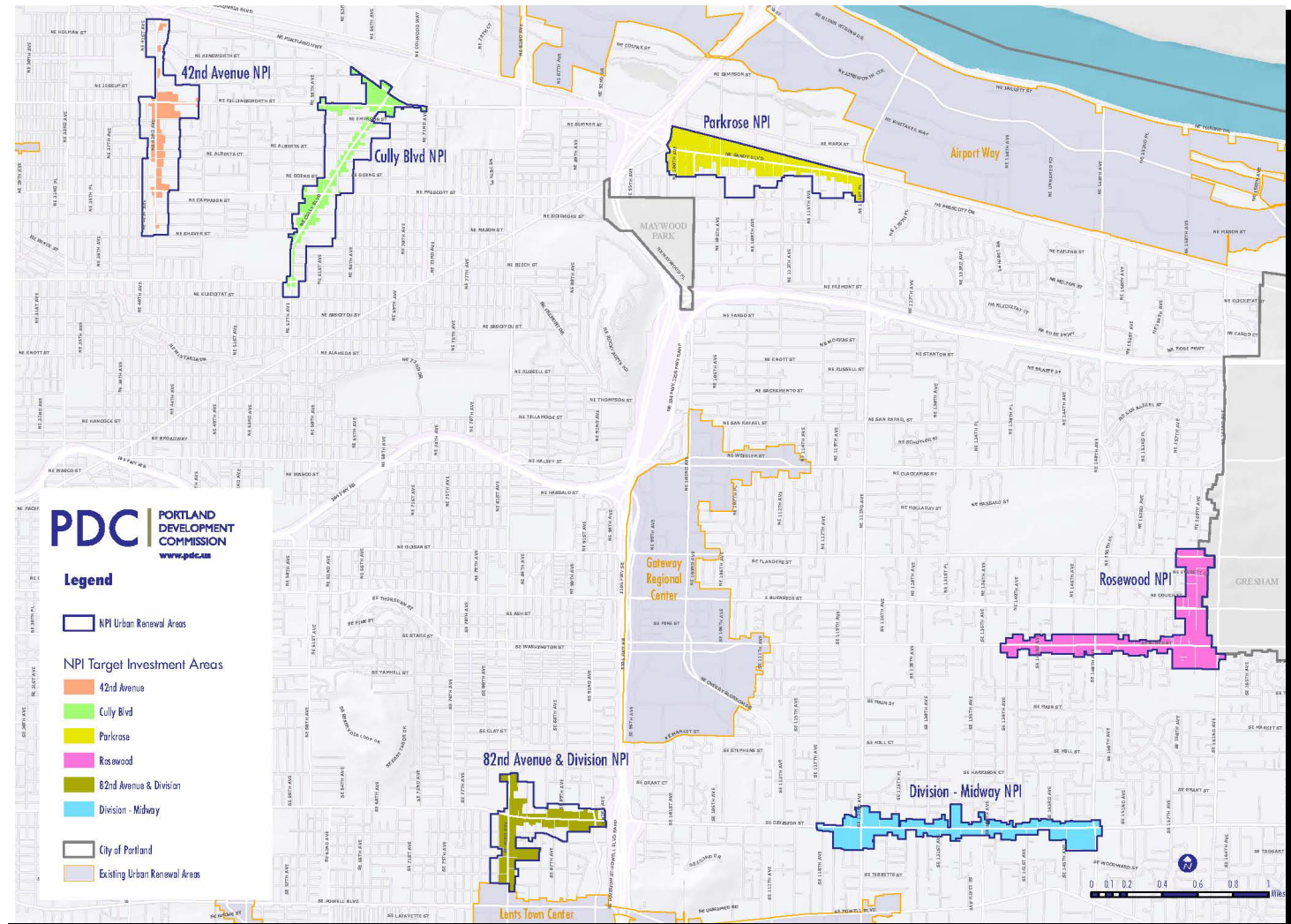
- Net business growth
- Higher tenancy rates
- Job growth
- Stronger business districts



NPI Districts

Selection Criteria:

- Outside existing URAs
- Within “Priority Neighborhoods”
- Concentration of minority-owned and/or serving businesses
- Concentration of locally-owned businesses
- Business/community organization capacity
- Commercial zoning/use



Community Process & Timeline

**NPI
Kickoff
Event –
Nov. 2011**

**Letter of
Interest –
Jan. 2012**

**PDC
Board and
PSC –
March 2012**

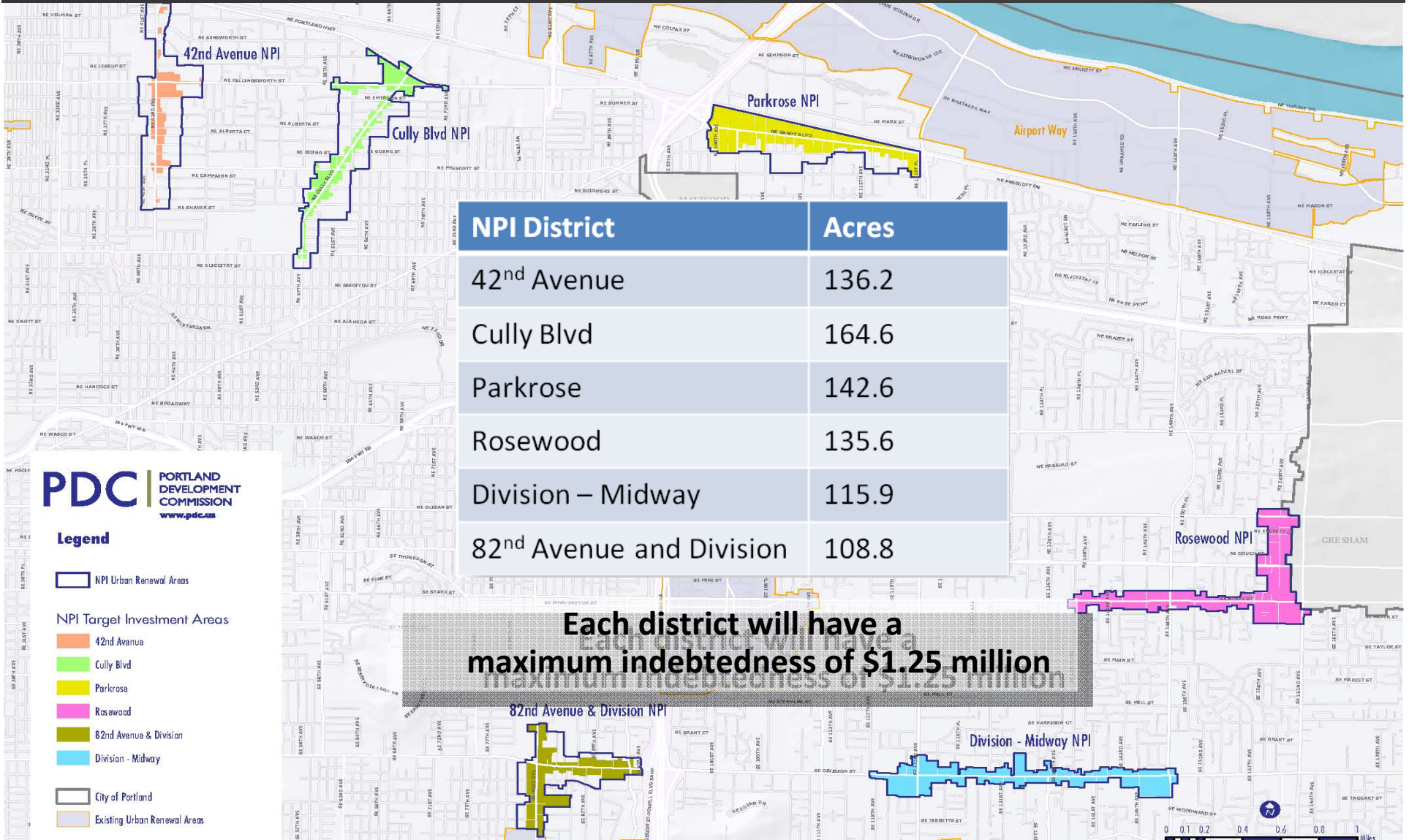


**Outreach and
Community
Organizing
Grants –
Dec. 2011**

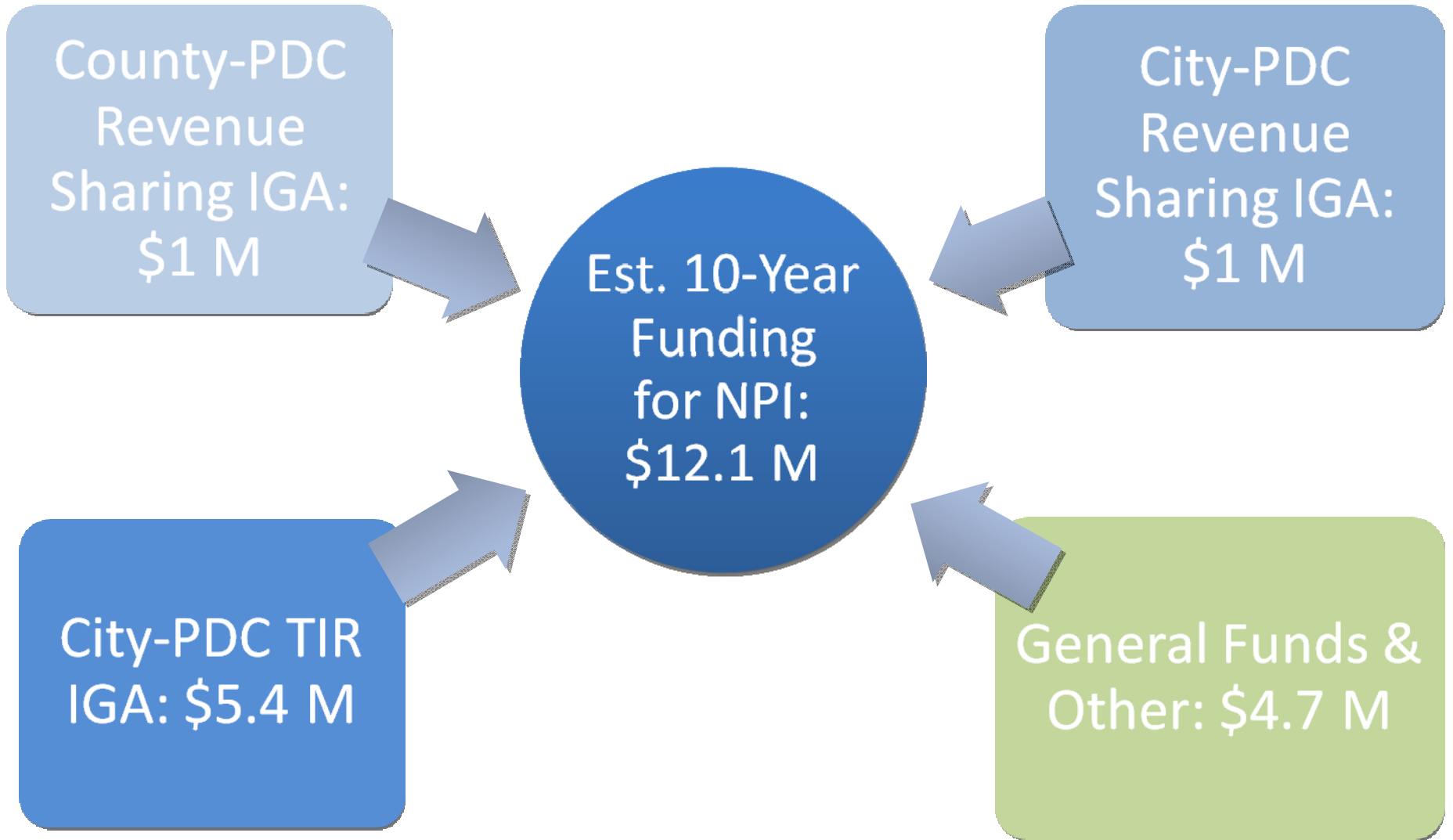
**District
Vision
and
Goals –
Feb.
2012**



NPI Urban Renewal Areas



Revenue Sources & Agreements



Roles & Annual Process

NPI District Administration

- Annual Budgeting and Work Plan
- Business development activities
- District marketing and promotion activities
- District improvement projects
- Community involvement and Collaboration

PDC Program Support

- Training and Technical Assistance to Districts
- Grant administration
- PDC Approves Annual NPI Budgets, Projects & Monitors Expenditures

NPI Partners

42nd Ave. * Cully Blvd. * 82nd and Division * Rosewood * Division – Midway * Parkrose

HISPANIC CHAMBER of
COMMERCE
IRCO
NAYA
PCC SBDC
SMALL BUSINESS LEGAL
CLINIC

PRIVATE SECTOR
SPONSORS



THE NONPROFIT
ASSOCIATION OF
OREGON



Neighborhood Economic Development

