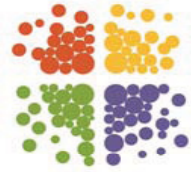




**City of Portland Council Hearing
RWA #7191 SW 46th Avenue and SW Florida Street
February 22, 2012**



St. Luke
LUTHERAN CHURCH

Worship
Connect
Serve
Grow

Serving at St. Luke



Monthly Project Community Table

**Meal for over 250 and food box service
for neighbors in need**

Serving at St. Luke



Annual Event

Grauer Back-to-School

Provide coats, shoes, socks, underwear and backpacks with supplies for over 550 students.



Needs:

Commercial Kitchen

Large Community Space – Fellowship Hall

Connecting space between buildings

Education space

Storage areas

**With City of Portland approval for the streets to be vacated
St. Luke Lutheran Church property and facilities can be
improved with new connections for our existing ministries
and space for new service projects.**



Expand to serve in new ways



AERIAL PHOTOGRAPH
NOT TO SCALE

ST. LUKE LUTHERAN CHURCH
SEP 18, 2014

Unimproved Existing Streets



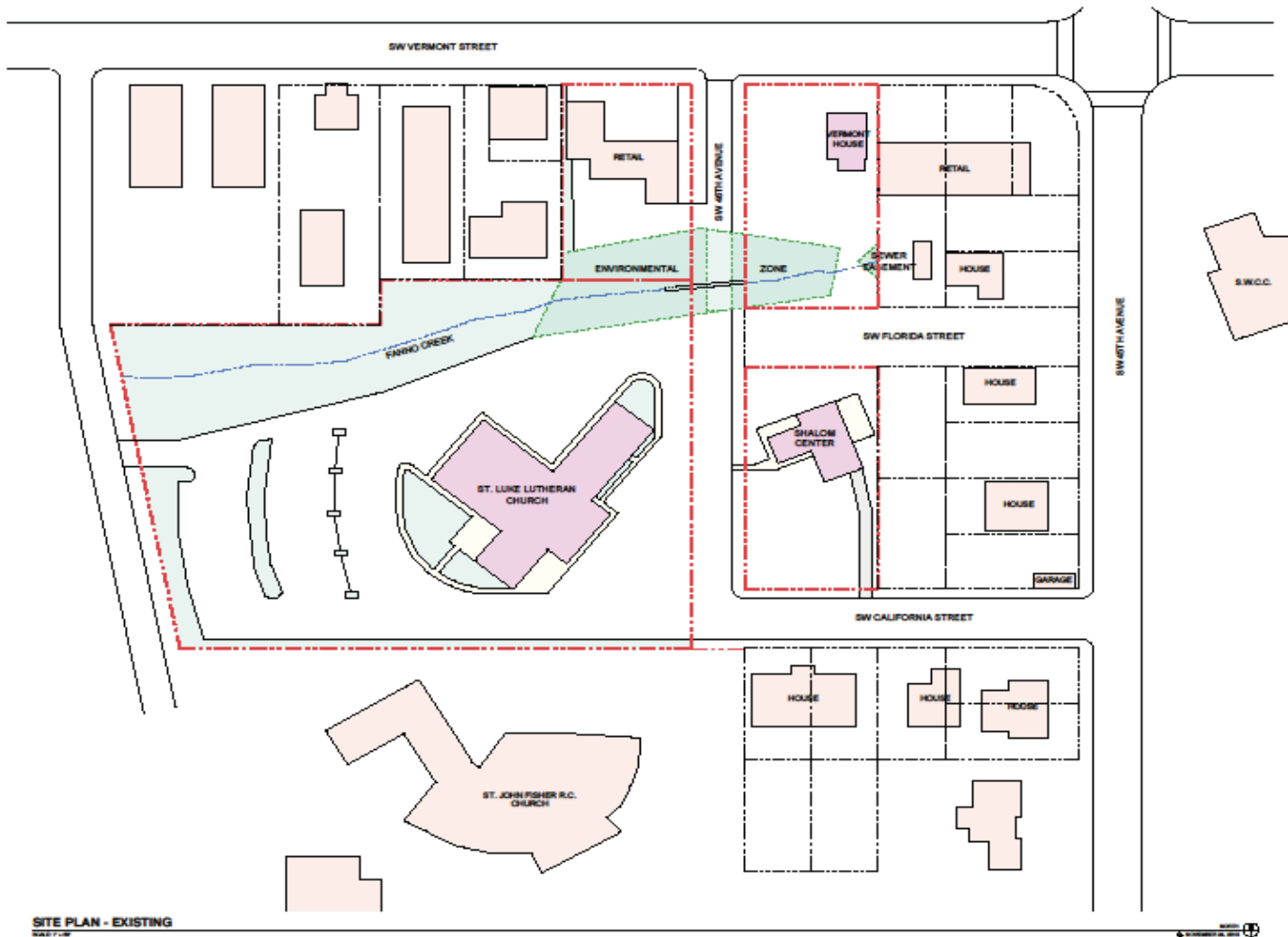
SW 46th Avenue at SW Vermont Street



SW 46th Avenue looking at SW Vermont St.

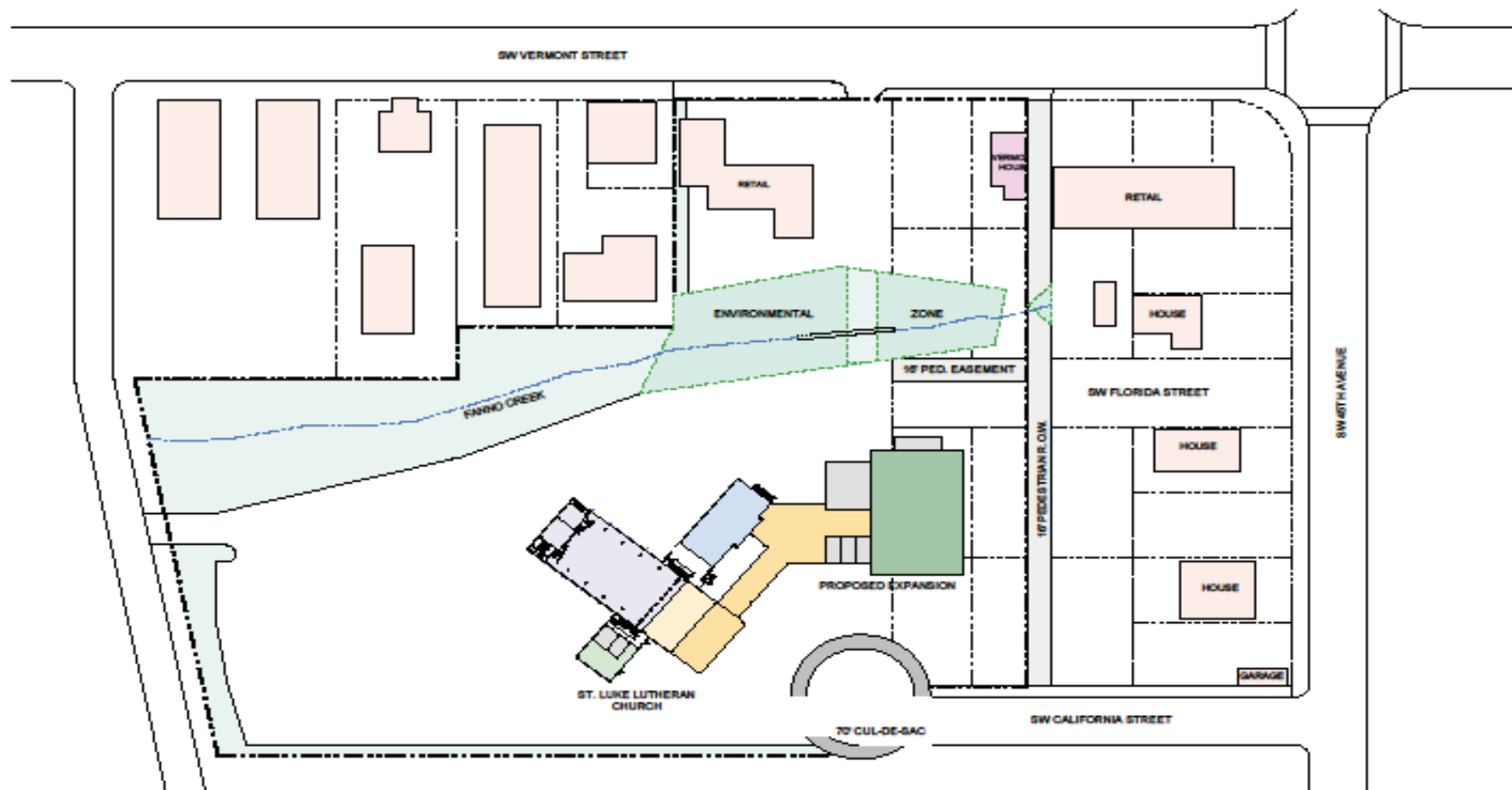


SW Florida St. from St. Luke property across SW 46th Ave.



SITE PLAN - EXISTING

St. Luke buildings no longer meet the needs of the congregation. Research shows staying on the same level and contiguous covered space are the best ways to improve church facilities.



SITE PLAN - CONCEPTUAL MASTER PLAN

ST. LUKE LUTHERAN CHURCH

NOT TO SCALE

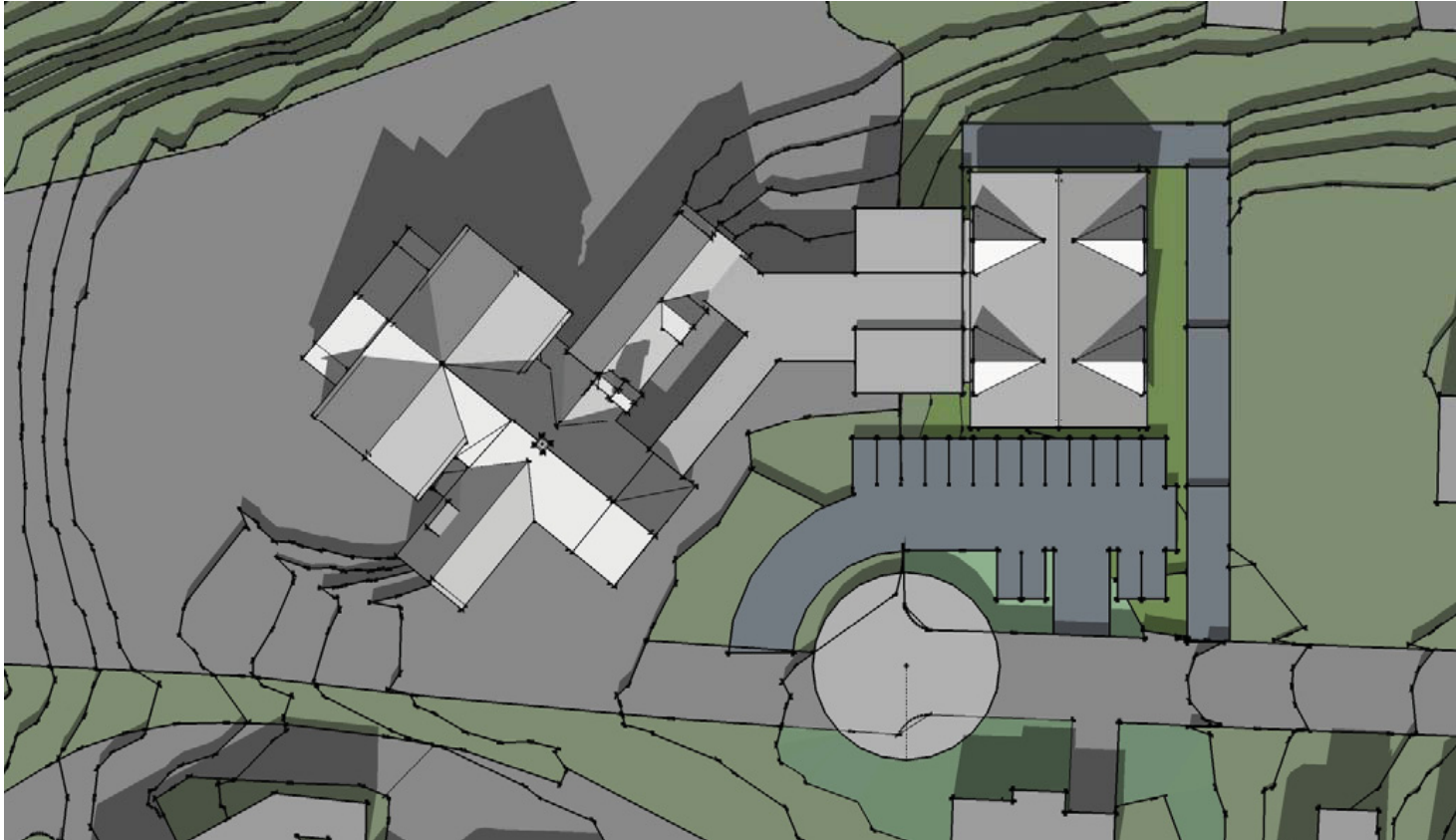
LRS PROJECT NO. 210177

© JANUARY 28, 2012



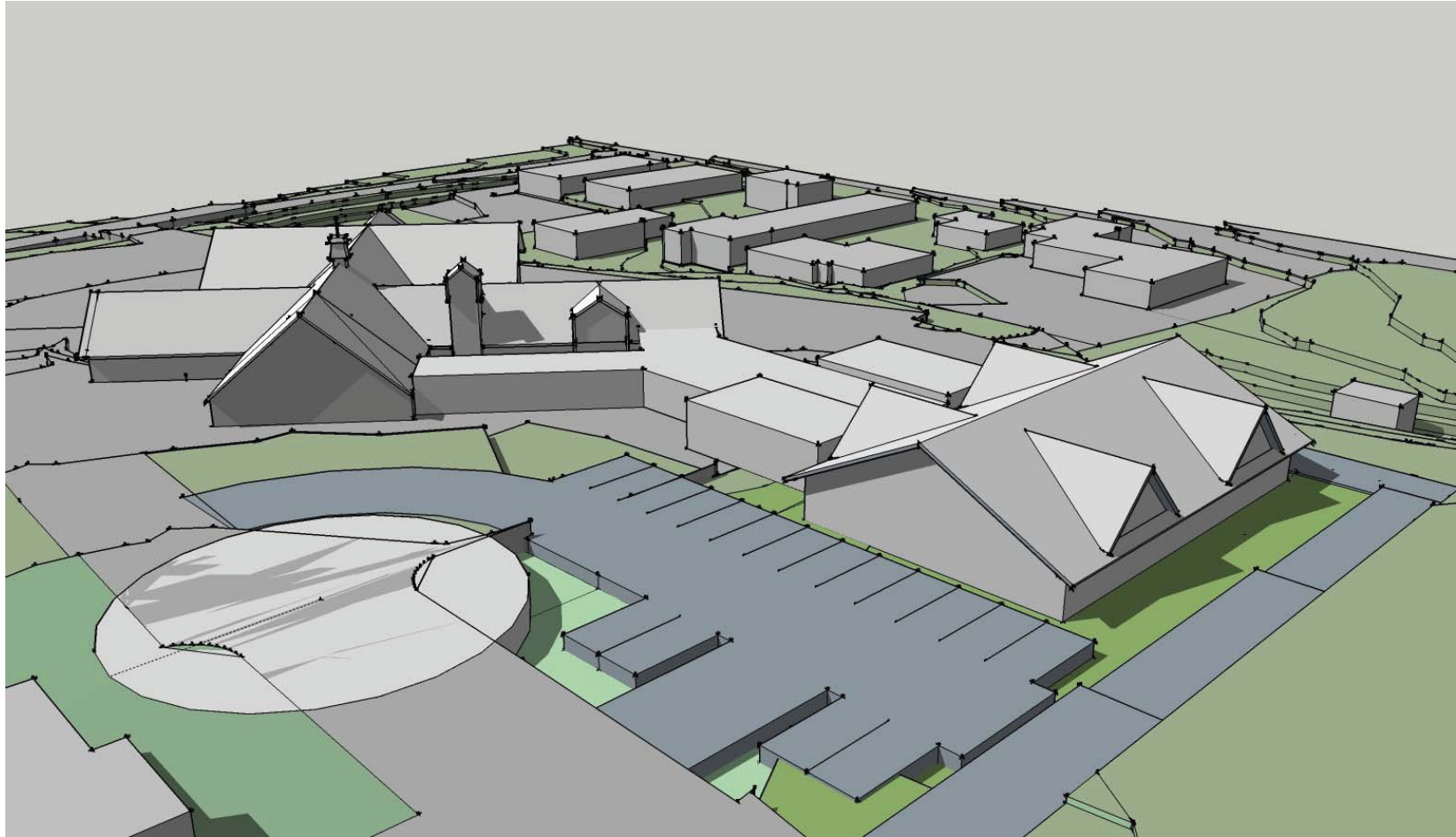
williamwilsonarchitects pc

St. Luke Lutheran Church 3D Concept Plan

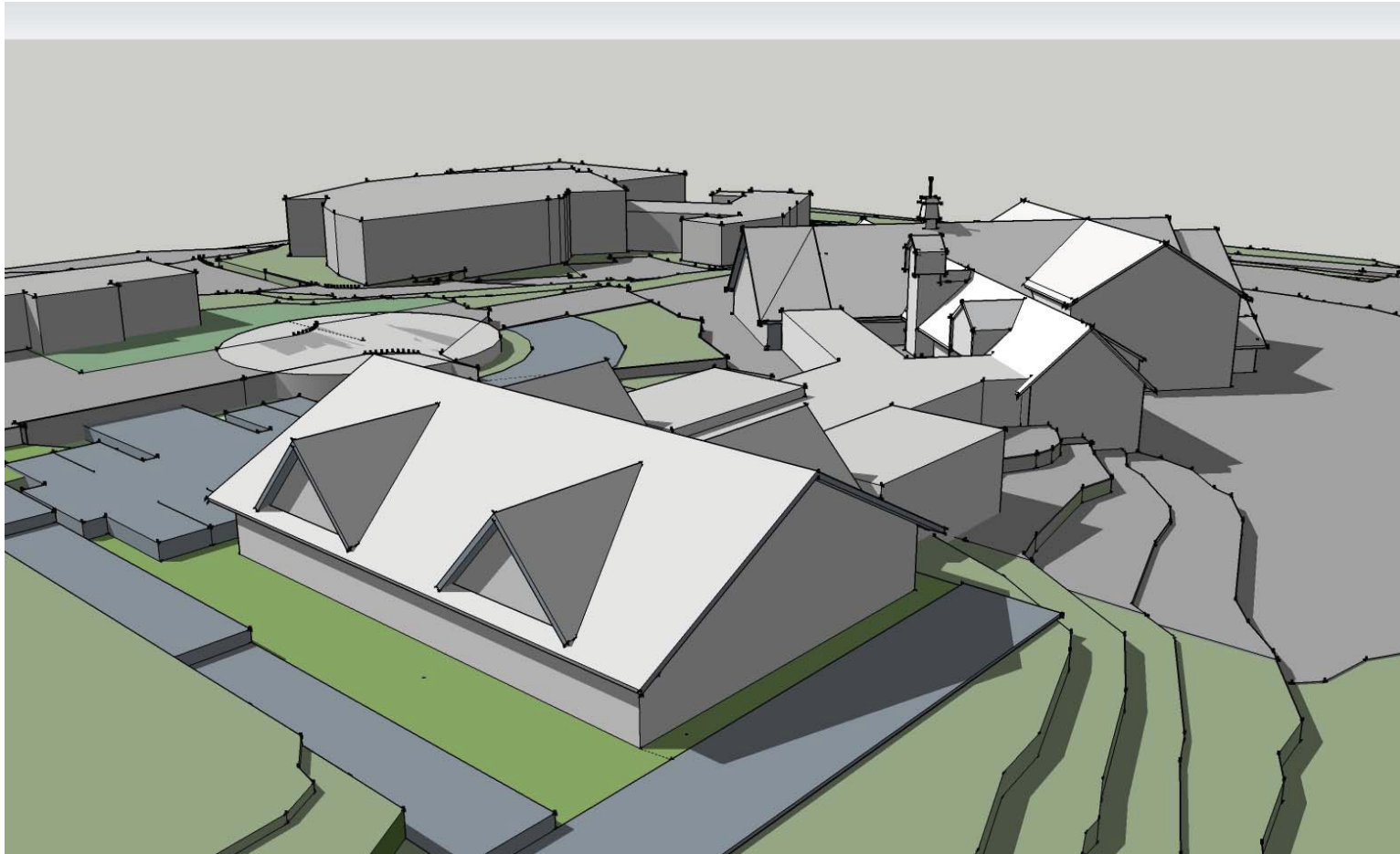


An aerial view that captures space for all St. Luke expansion needs.

We will refine the Building Concept Plan to complete a Master Plan once the street vacating petition process is complete. This is in anticipation of a summer 2012 congregational vote for a building campaign to begin an expansion project.



Looking at the property from above SW California St.



Looking to the Southwest across the property

To be here today

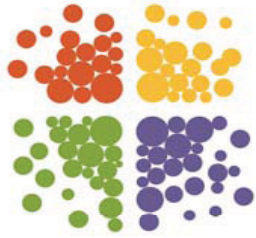
The Bureau of Transportation found this street vacation acceptable with conditions for access and improvements.

The Bureau of Planning and Sustainability also found this street vacation acceptable with the conditions recommended by the Bureau of Transportation.

Note: Access along SW 46th Avenue will be available for neighbors until a new right of way pedestrian connection is completed by St. Luke.

The next steps depend on your vote

We encourage the City Council to support the St. Luke RWA # 7191 petition.



St. Luke
LUTHERAN CHURCH

Questions & Discussion



Thanks for your time