



The Cradle to Career Partnership

*Success for All Students in
Portland & Multnomah County*

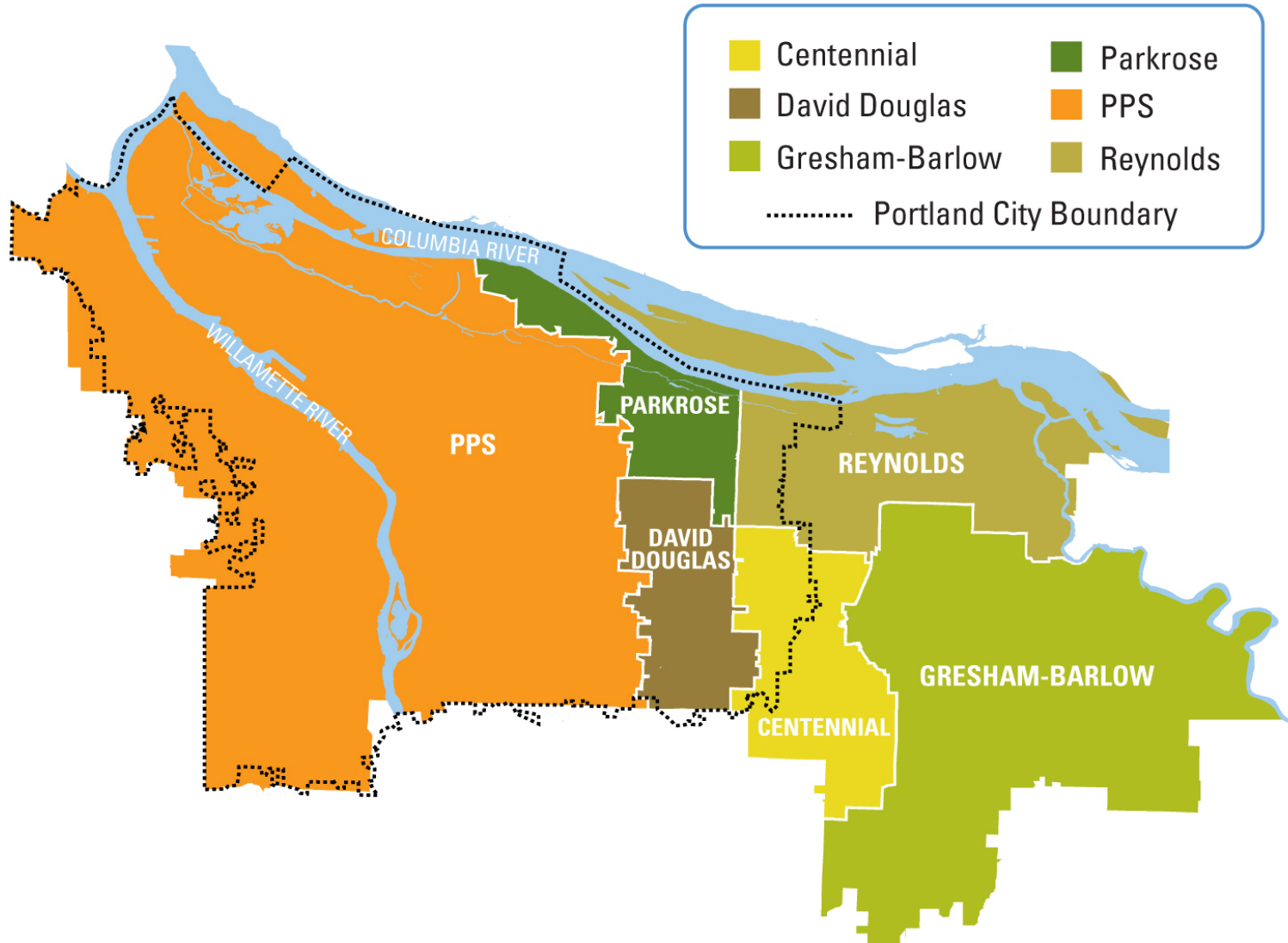
all hands raised



Education, Equity and Excellence
from Cradle to Career

Six School Districts Actively Engaged

Boundaries for Major Public School Districts Serving Multnomah County



We are failing to meet the needs of our students:

53.9%

The combined free and reduced lunch rate for our six urban school districts.

55%

Percent of fifth grade students in Multnomah County who meet or exceed math standards, for black students this number drops to 28%.

60.1%

The high school on-time graduation rate for students in Multnomah County.

Our economic future depends our ability to educate our youth:

64%

The percentage of jobs in Oregon (1.3 million) that will require some postsecondary training beyond high school in 2018.

\$1.6 billion

The estimated to boost the local economy annually by increasing the number of individuals who earn a two-year or four-year degree by age 24 by one-percent

19%

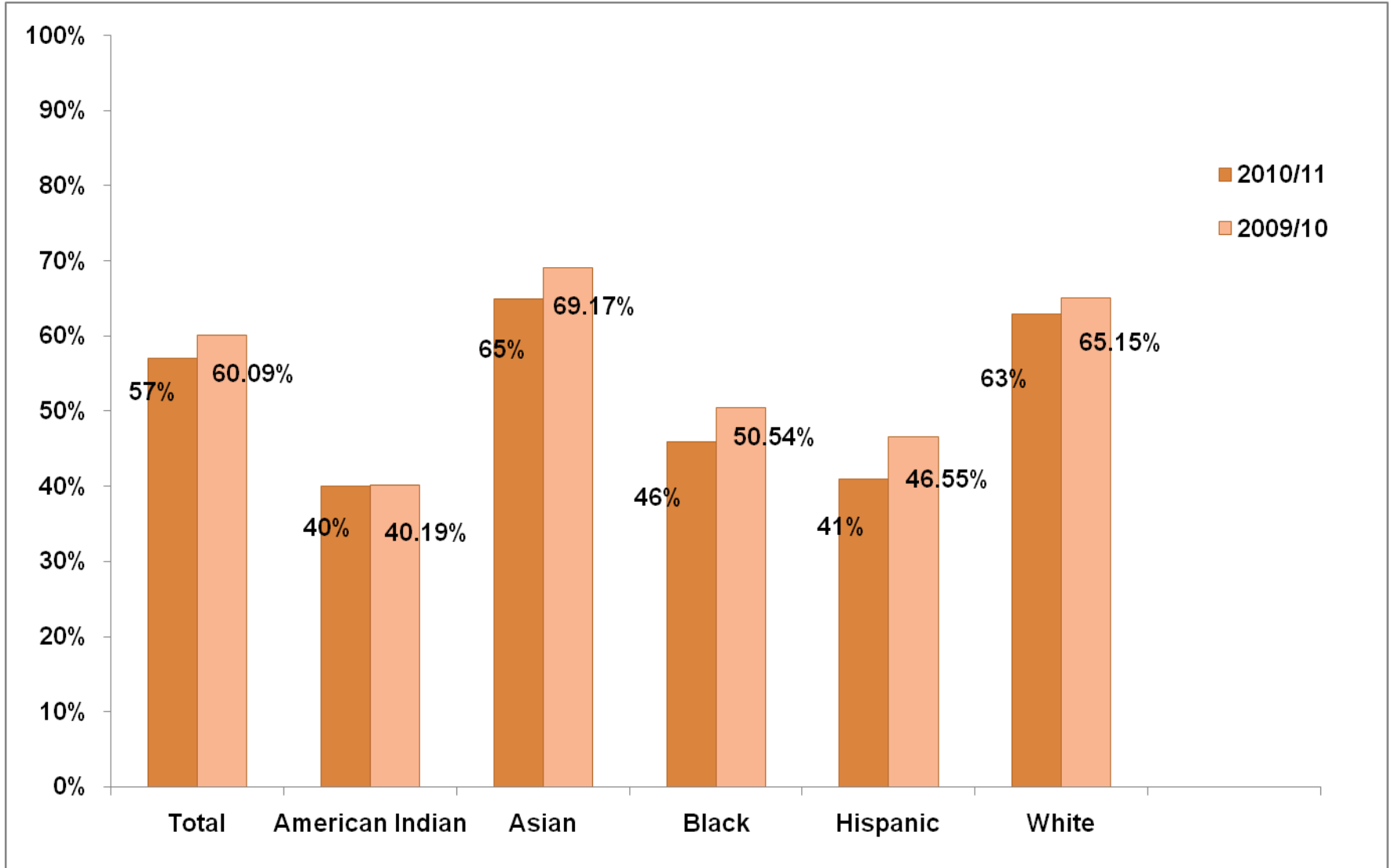
The unemployment rate for individuals with a high school diploma (compared to 7% for those with a bachelor's degree).

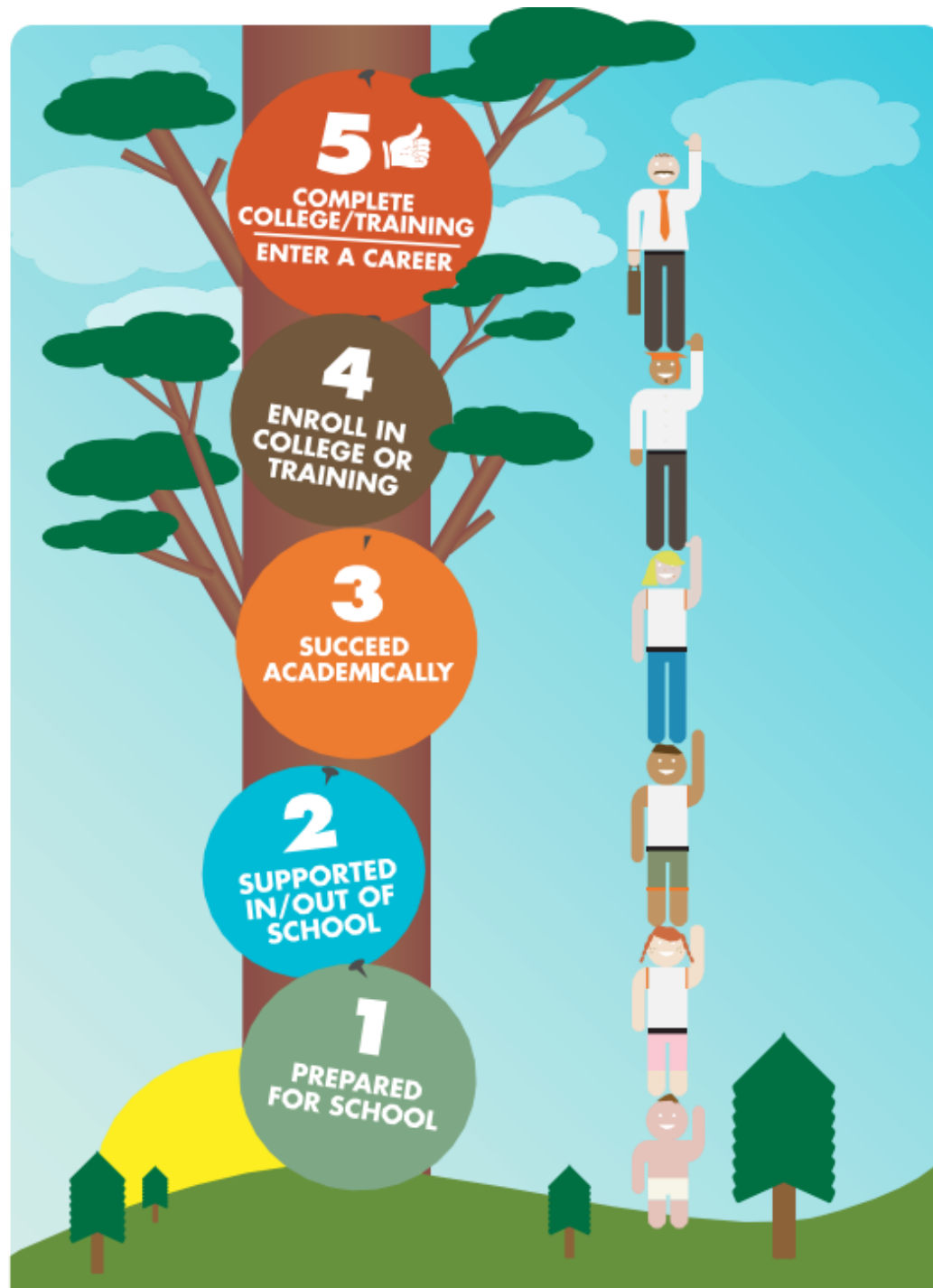
all hands raised



Education, Equity and Excellence
from Cradle to Career

Multnomah County Graduation Rates





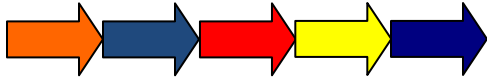
all hands raised



Education, Equity and Excellence
from Cradle to Career

Effective Evidence Efficient

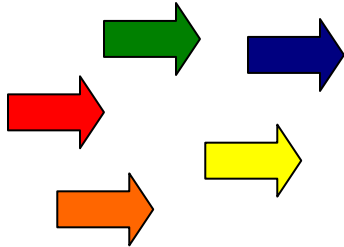
Synergy



□ Similar organizations collecting quality data for the same outcomes in a coordinated and collaborative network



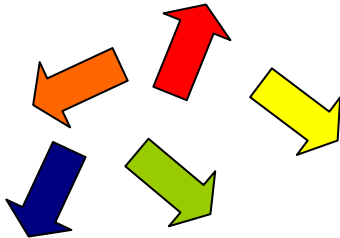
Alignment



Similar organizations collecting quality data that align under similar outcomes for broad community impact



Accountability



Similar organizations collecting quality data, but uncoordinated and isolated





C2C PARTNERSHIP

all hands raised



Education, Equity and Excellence
from Cradle to Career

All Hands Raised – Leading the Charge to Build the Partnership

- ✓ Held Community Workshops and recruited “Convening Partners” for Initial Collaboratives
- ✓ Adopted Three Initial Collaboratives
- ✓ Providing Continuous Improvement Facilitation
- ✓ Maintaining *Ninth Grade Counts Partnership* as a “Learning Lab” for New Collaboratives

Three Priorities

Eliminating Disparities in Children and Youth Success: Drives action to address the academic achievement gap with a specific initial focus on racial and ethnic disparities.

Linking Community and Family Supports to Children and Youth Success: Drives action to align and improve extended learning opportunities and social supports in order to maximize their impacts on academic and social outcomes.

Ensuring that All Students Enter School Prepared to Learn: Drives action to ensure that all children, regardless of family background, receive the opportunities and supports that will prepare them to enter school ready for success.

all hands raised



Education, Equity and Excellence
from Cradle to Career

Three Initial Collaboratives

Eliminating Disparities in Student Success, convened by the Coalition of Communities of Color

Linking Community and Family Supports, convened by SUN Service System Coordinating Council and Portland State University's Center for the Improvement of Child and Family Services

Ready for Kindergarten, convened by Social Venture Partners Portland and the Multnomah County Commission on Children, Families & Community

all hands raised



Education, Equity and Excellence
from Cradle to Career



C2C CYCLE

Pioneering Investors

- ★ Bill & Melinda Gates Foundation
- ★ The Boeing Company
- ★ City of Portland
- ★ JP Morgan Chase & Co.
- ★ Living Cities
- ★ Northwest Evaluation Association
- ★ NW Natural
- ★ Portland Business Alliance
- ★ Portland Children's Levy
- ★ PGE Foundation
- ★ Portland State University
- ★ The Standard
- ★ United Way of the Columbia-Willamette
- ★ U.S. Bank

What to Expect This Year

- ✓ Finalizing Key Indicators and Improvement Targets (*Indicators in April; Targets in Summer*)
- ✓ Publishing a Report to the Community (*Fall*)
- ✓ Reports on Initial Collaboratives' Progress (e.g. charters, actions plans, etc.) (*Summer/Fall*)
- ✓ Bringing Additional Collaboratives On-Board (*Ongoing*)