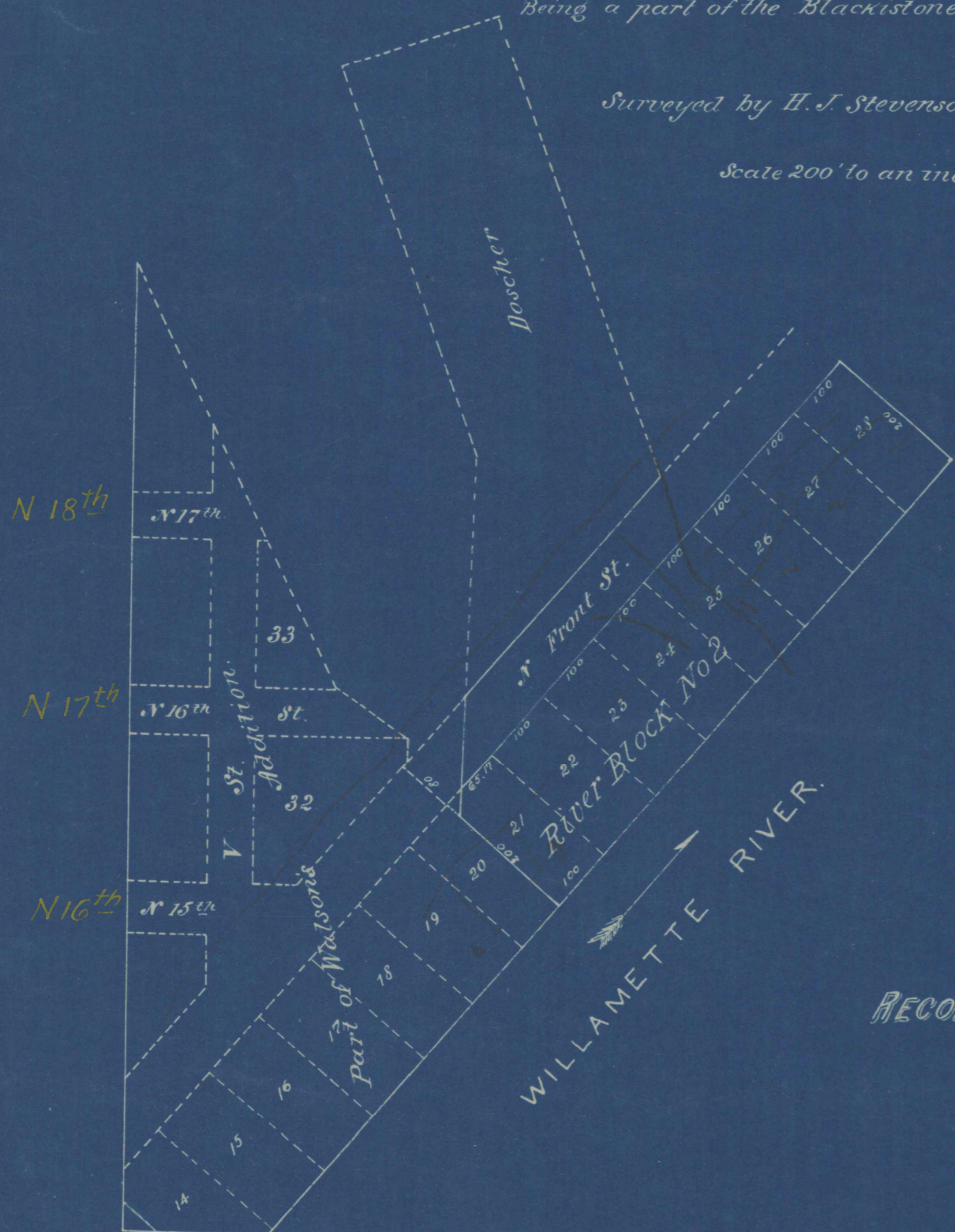


1-46.
MAP OF
DOSCHER'S ADDITION
to the

City of Portland
Being a part of the Blackstone Land Claim

Surveyed by H. J. Stevenson March 1871.

Scale 200' to an inch.



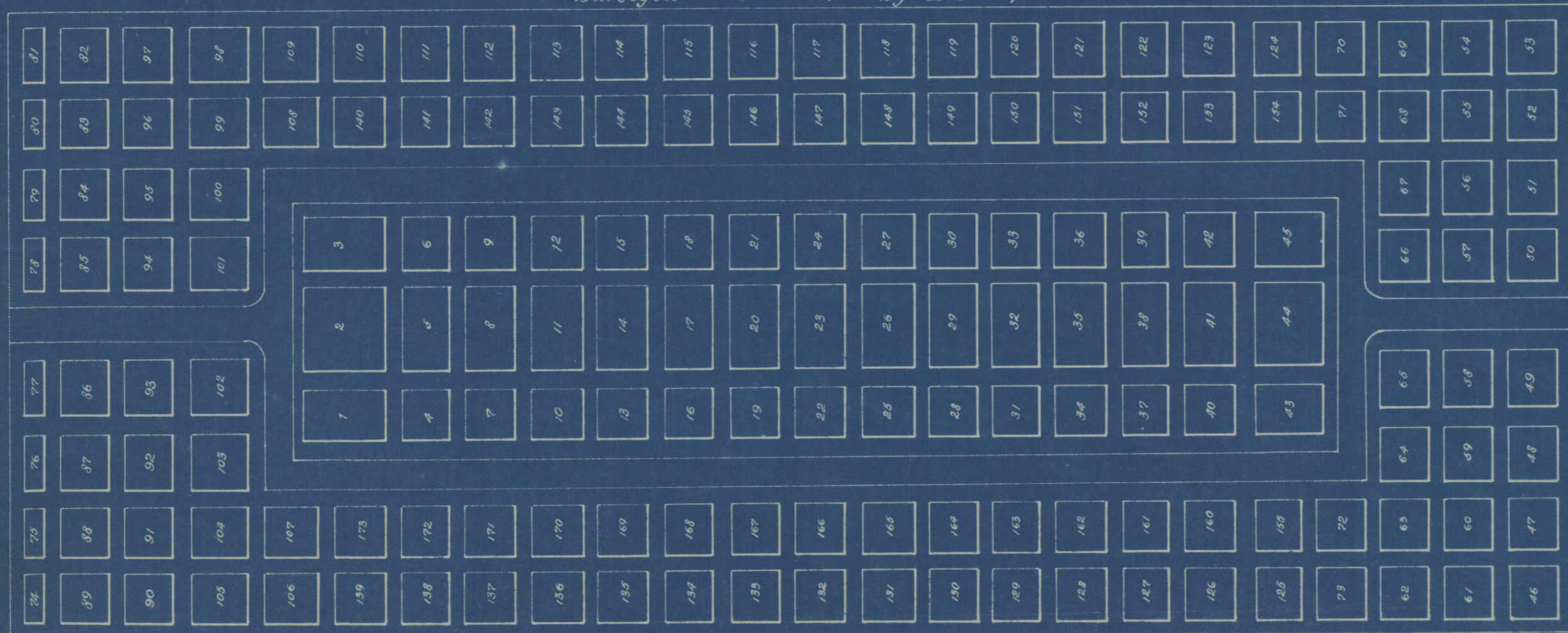
Note: This print was taken from a tracing in the files of the City Engineer and has been compared with the original plat and found to be a true copy.
Present Street names are shown in yellow.

EXHIBIT "B"

RECORDED APRIL 11TH 1871.

1-46.
PLAN OF THE
COLUMBIAN CEMETERY

Surveyed and drawn by H. J. Chapman.



Directors
Wm. Switzer
P. T. Smith
A. Dunclerland.

Secretary
Wm. Love

Reduced from a scale of 30 feet to one inch, to a scale of 42 1/2 feet to one inch.

RECORDED MAY 29TH 1869.