

Briefing on Race, Ethnicity, Mobility, Income, & Poverty in Portland

August 9, 2011

From: Steve Dotterer
Uma Krishnan



Bureau of Planning and Sustainability
Innovation. Collaboration. Practical Solutions.



Racial Profile

Portland



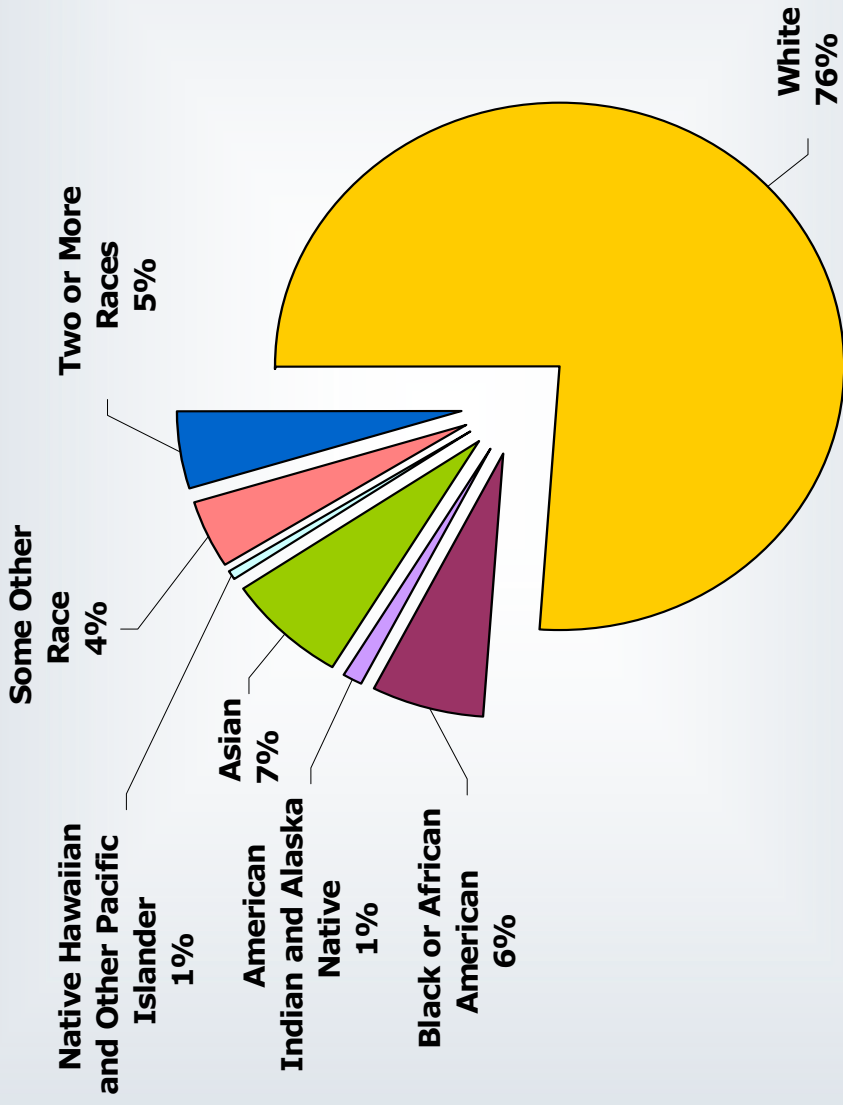
Racial Make-Up of Portland: 1960-1990

Race Category	1960		1970		1980		1990	
	Number	%	Number	%	Number	%	Number	%
White	351,757	94.3%	352,635	92.2%	316,993	86.5%	370,135	84.6%
Black	15,637	4.2%	21,572	5.6%	27,734	7.6%	33,530	7.7%
Native American, Inuit, or Aleut	N/A		N/A	N/A	3,526	1.0%	5,399	1.2%
Asian, or Pacific Islander	N/A		N/A	N/A	10,636	2.9%	23,185	5.3%
Other	5,282	1.4%	8,412	2.2%	7,494	2.0%	5,070	1.2%
Total	372,676		382,619		366,383		437,319	

Source: 1960-1990 Census



Racial Distribution of Portland, 2010



Source: 2010 Census

Racial Change in Portland in the Last Two Decades: 2000-2010

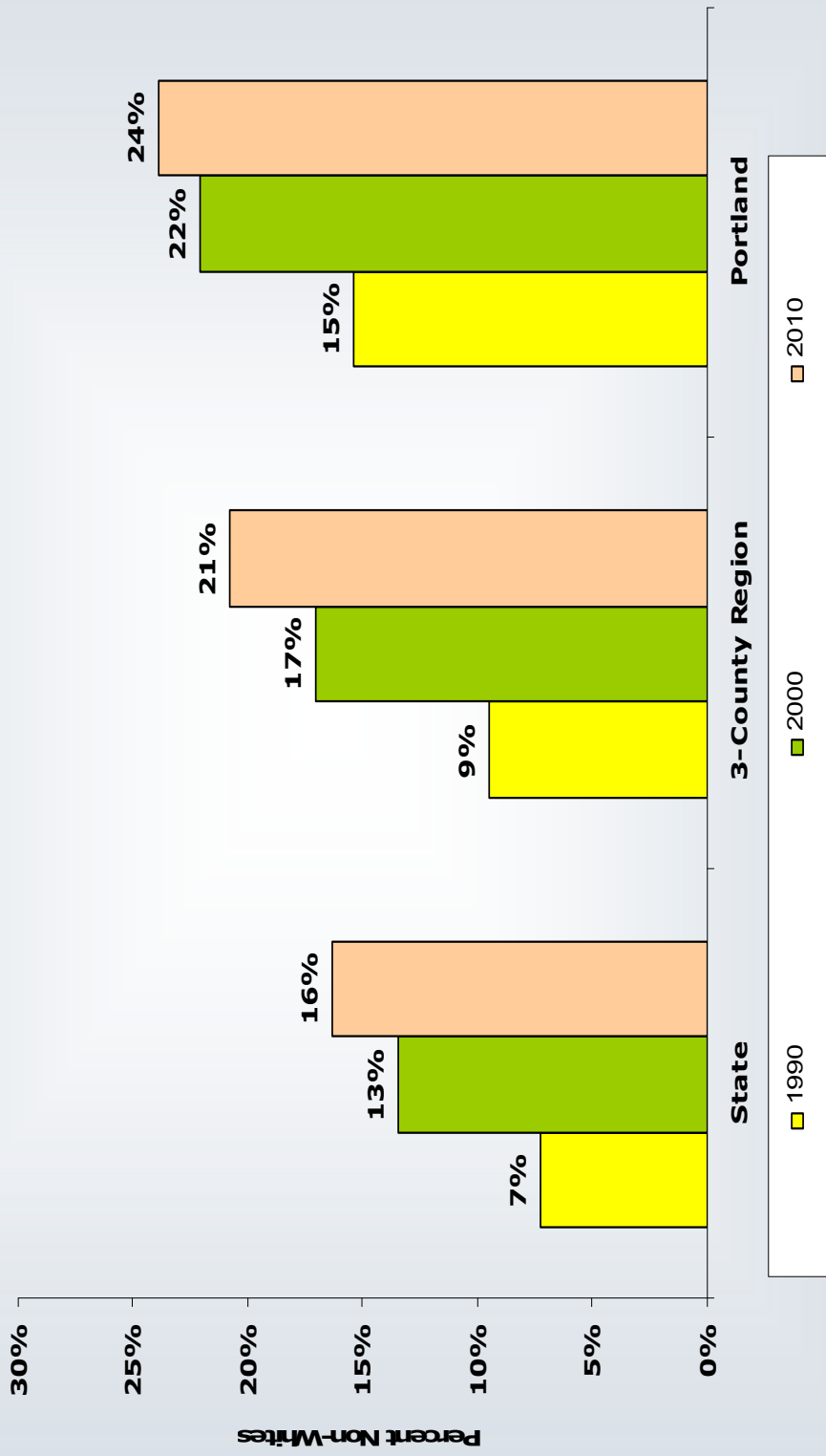
Race Category	Population 2010	Absolute Increase 2000-2010	Percent Change 2000-2010
One race	556,496	49,330	9.7%
White	444,216	31,975	7.8%
Black or African American	36,695	1,580	4.3%
American Indian and Alaska Native	5,991	404	7.2%
Asian	41,692	8,222	24.6%
Native Hawaiian & Other Pacific Islander	3,109	1,116	56.0%
Some Other Race	24,793	6,033	32.2%
Two or More Races	27,280	5,325	24.3%

Source: Census 2000, 2010

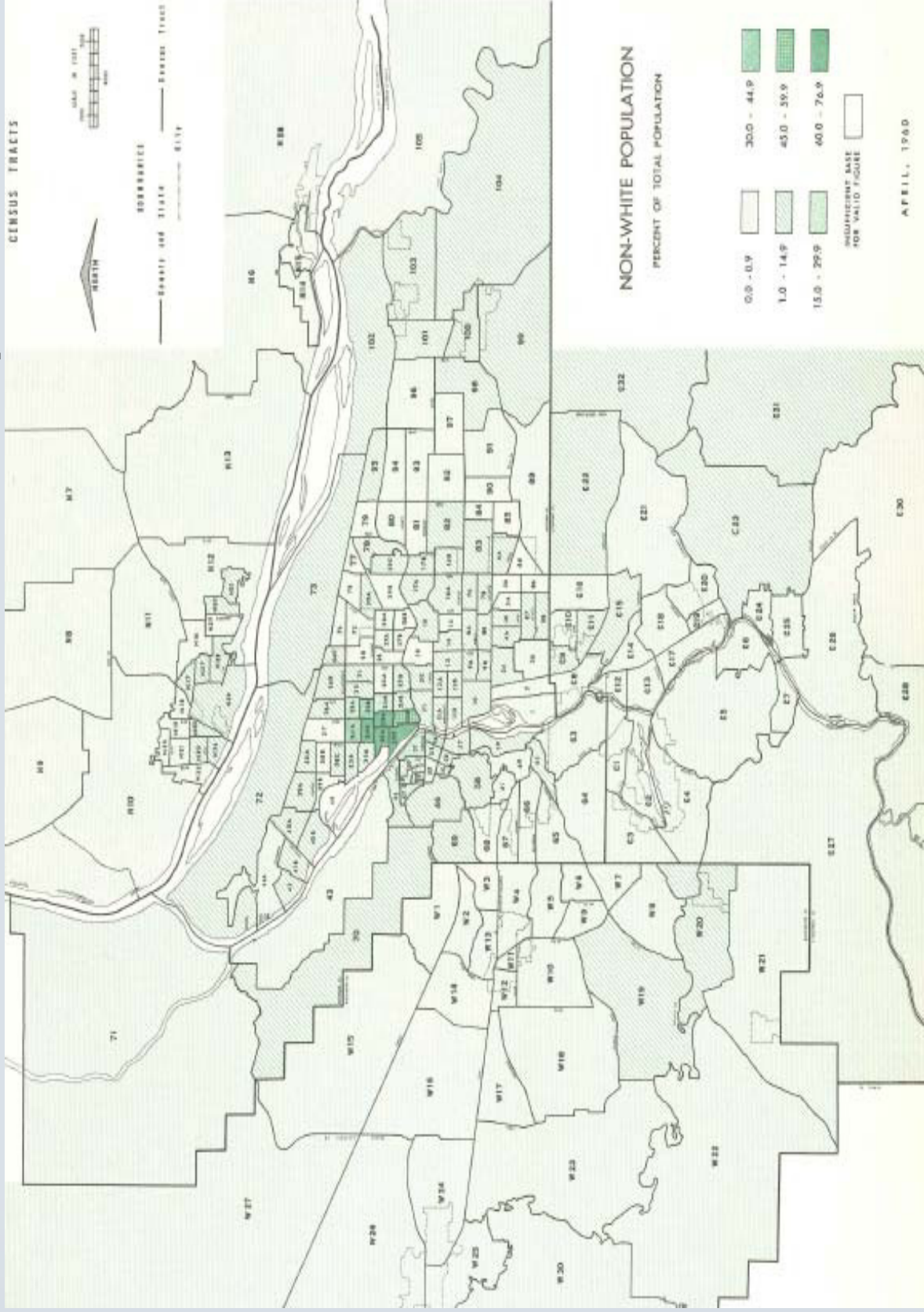
Note: Historically, Communities of Color experience “undercounting” due to multiple reasons. A report titled *Communities of Color* released in 2009 documents population counts that are community verified for Multnomah County. In particular, the Native American Count is reported to be 37,745 for the County

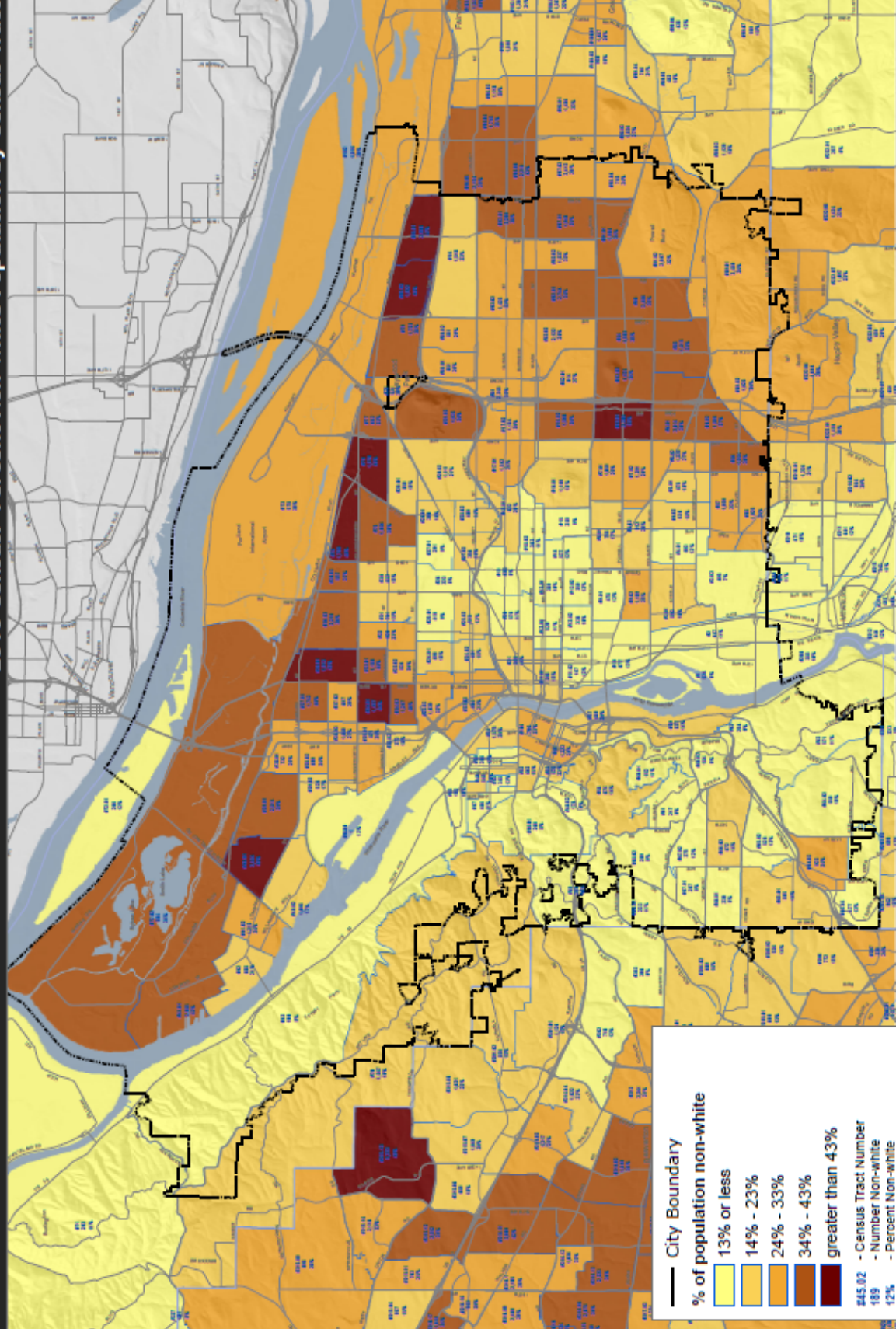


Proportion of Non-Whites for Various Jurisdictions 1990-2010



Racial Distribution of Portland's Population: 1960





City Boundary

% of population non-white

- 13% or less
- 14% - 23%
- 24% - 33%
- 34% - 43%
- greater than 43%

#45.02 - Census Tract Number
 189 - Number Non-white
 12% - Percent Non-white

Universe: Total Persons

Source: City of Portland, Bureau of Planning & Sustainability
 U.S. Census Bureau, 2010

August 5, 2011

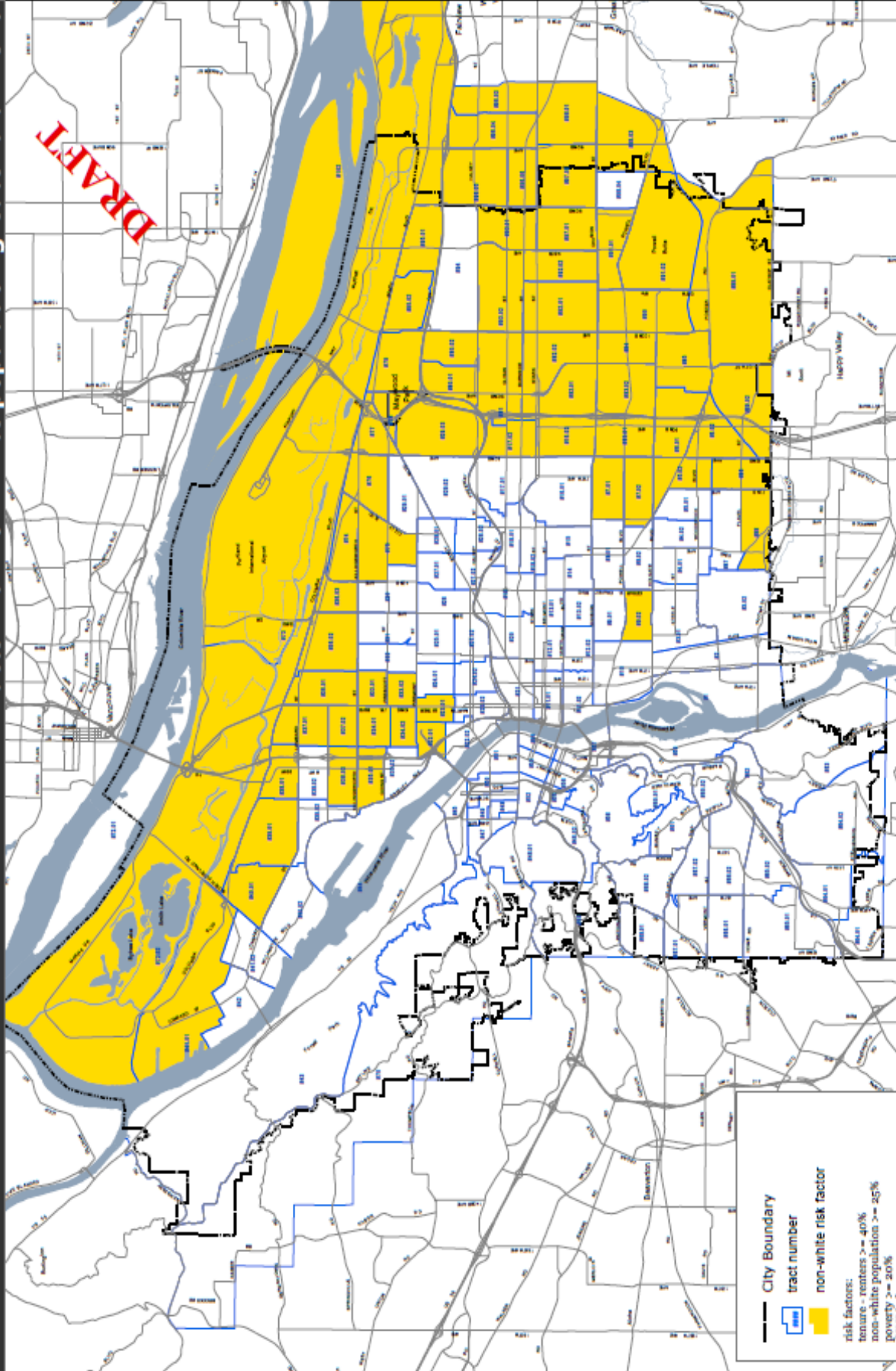


Bureau of Planning and Sustainability
 Innovation. Collaboration. Practical Solutions.
 John Adams, Portland Bureau of Planning and Sustainability Director



Bureau of Planning and Sustainability
 Innovation. Collaboration. Practical Solutions.



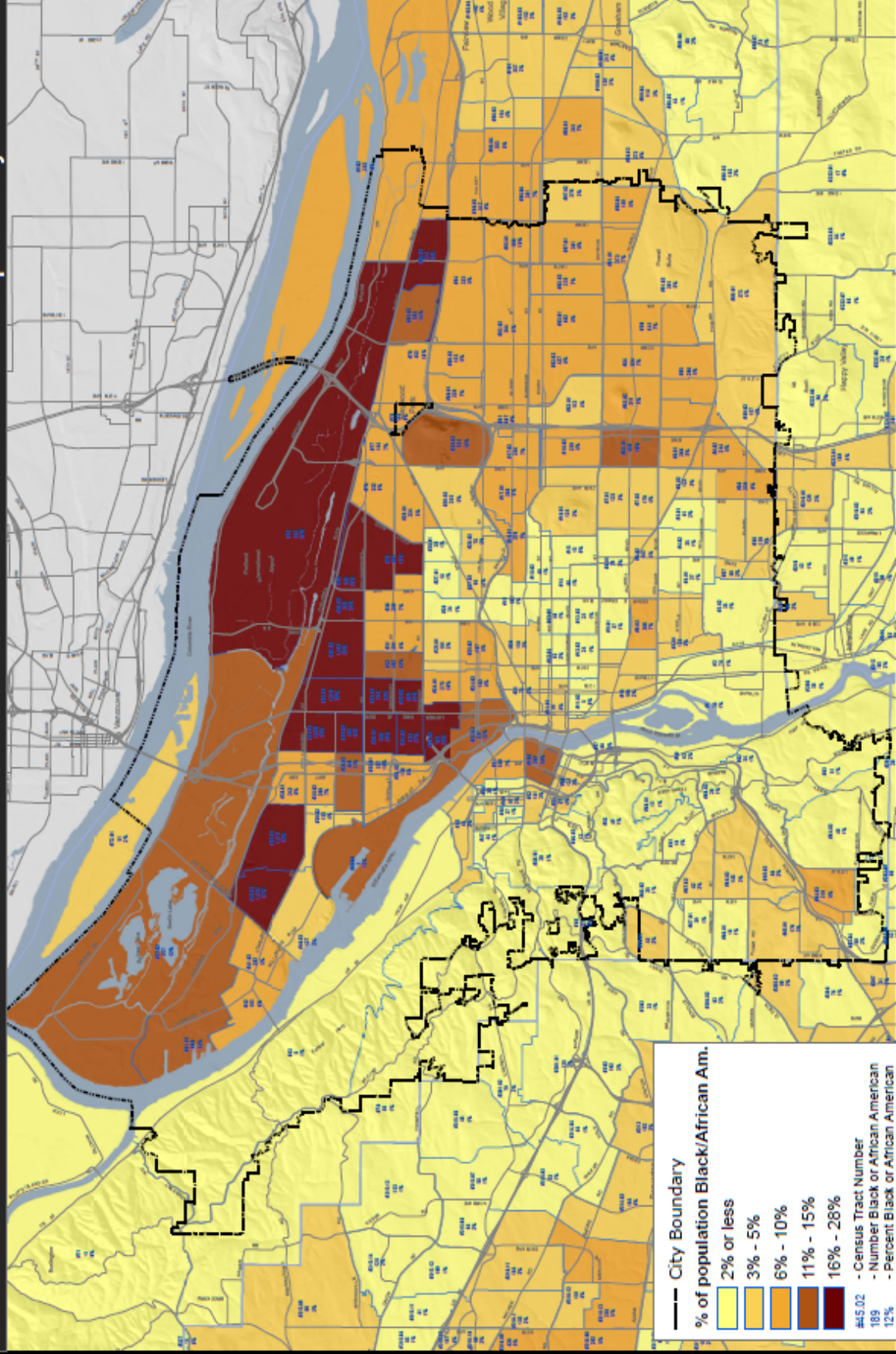


City Boundary
 tract number
 non-white risk factor
 risk factors:
 tenure - renters >= 40%
 non-white population >= 25%
 poverty >= 20%
 GINI index >= 40
 median home value < city median



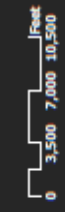
Bureau of Planning and Sustainability
 Innovation. Collaboration. Practical Solutions.
 City of Portland
 Lisa Adams, Mayor - Alan Robinson, Deputy





Universe: Total Persons
 Source: City of Portland, Bureau of Planning & Sustainability
 U.S. Census Bureau, 2010

August 6, 2011

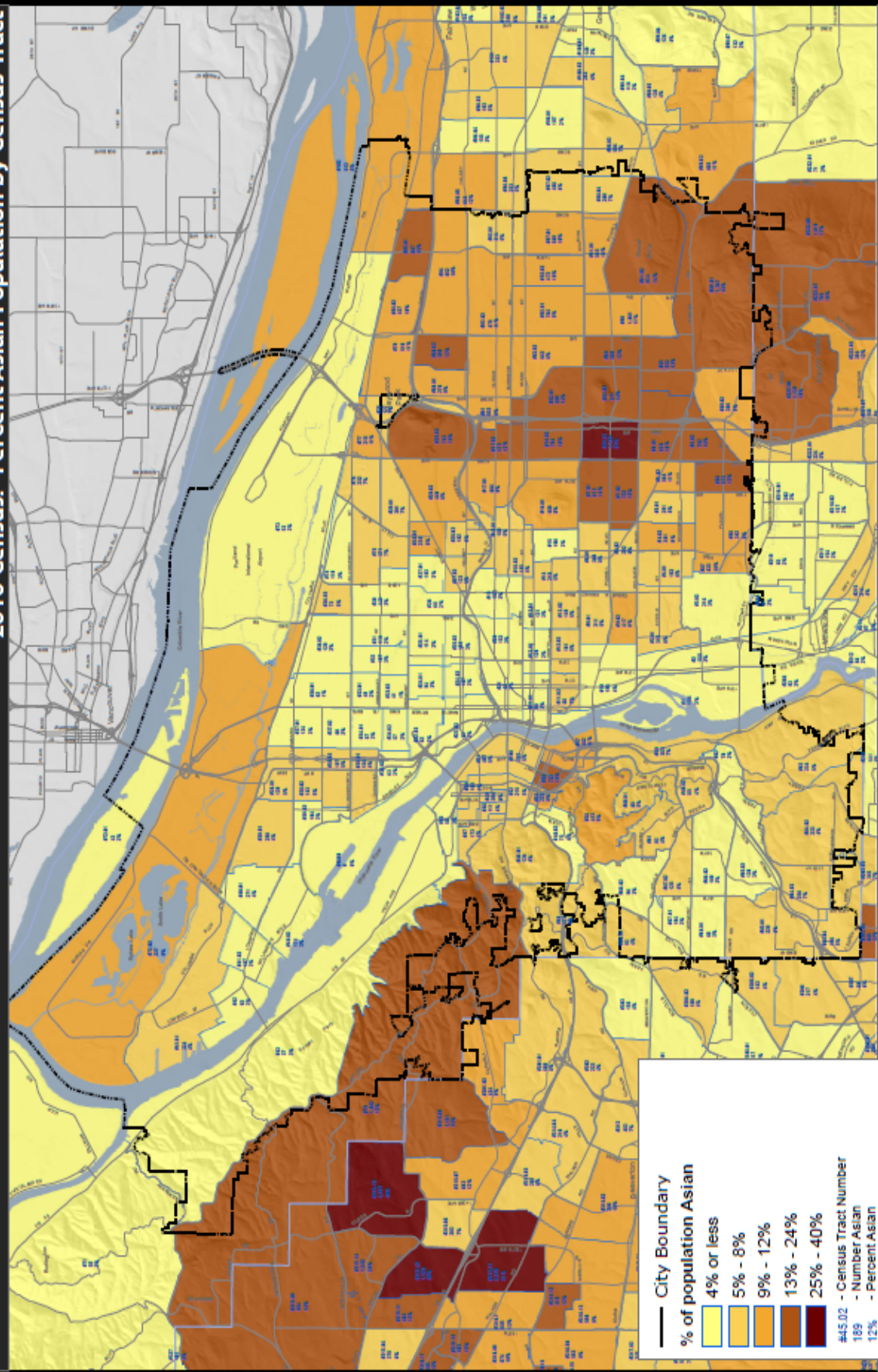


Bureau of Planning and Sustainability
 Innovates. Collaborates. Practical Solutions.
 City of Portland
 500 Adams Street, 7th Floor, Portland, Oregon

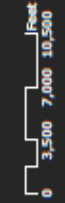


Bureau of Planning and Sustainability
 Innovation. Collaboration. Practical Solutions.





Examine Total Persons
 Source: City of Portland, Bureau of Planning & Sustainability
 U.S. Census Bureau, 2010



Bureau of Planning and Sustainability
 Innovation. Collaboration. Practical Solutions.
 City of Portland Oregon
 Ann Adams, Manager - Public Education, Outreach



Ethnic Profile

Portland



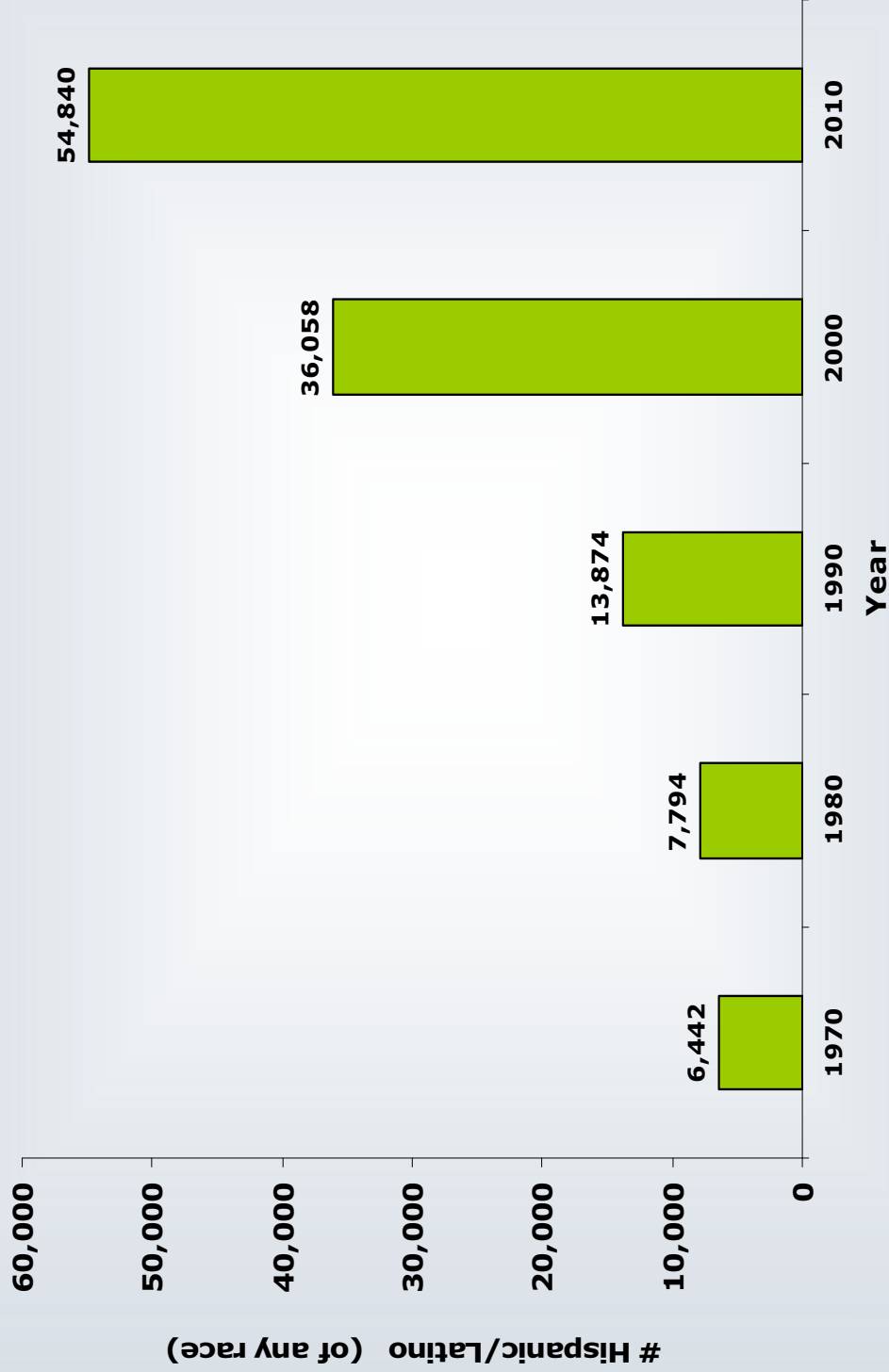
Population Distribution by Ethnicity, Portland

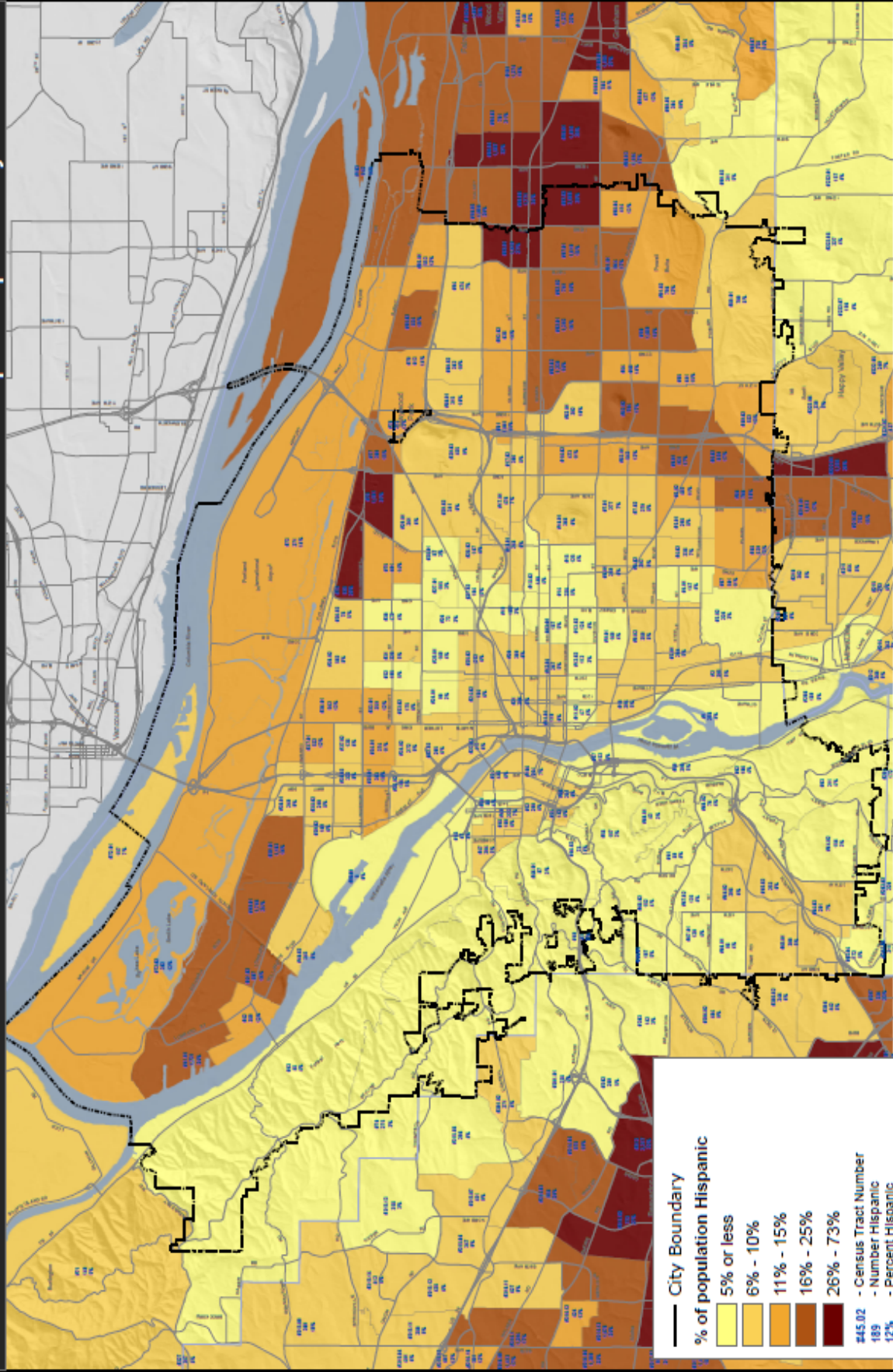
	2010		2000	
	Number	%	Number	%
Hispanic or Latino (of any race)	54,840	9.4%	36,058	6.8%
Non-Hispanic or Latino (of any race)	528,936	90.6%	493,063	93.2%
Absolute & Percent Increase in Hispanics	18,782 (52% increase)			
Absolute & Percent Increase in Non-Hispanics	35,873 (7% increase)			

Source: Census 2000, 2010



Growth of Hispanic/Latino Population in Portland: 1970-2010





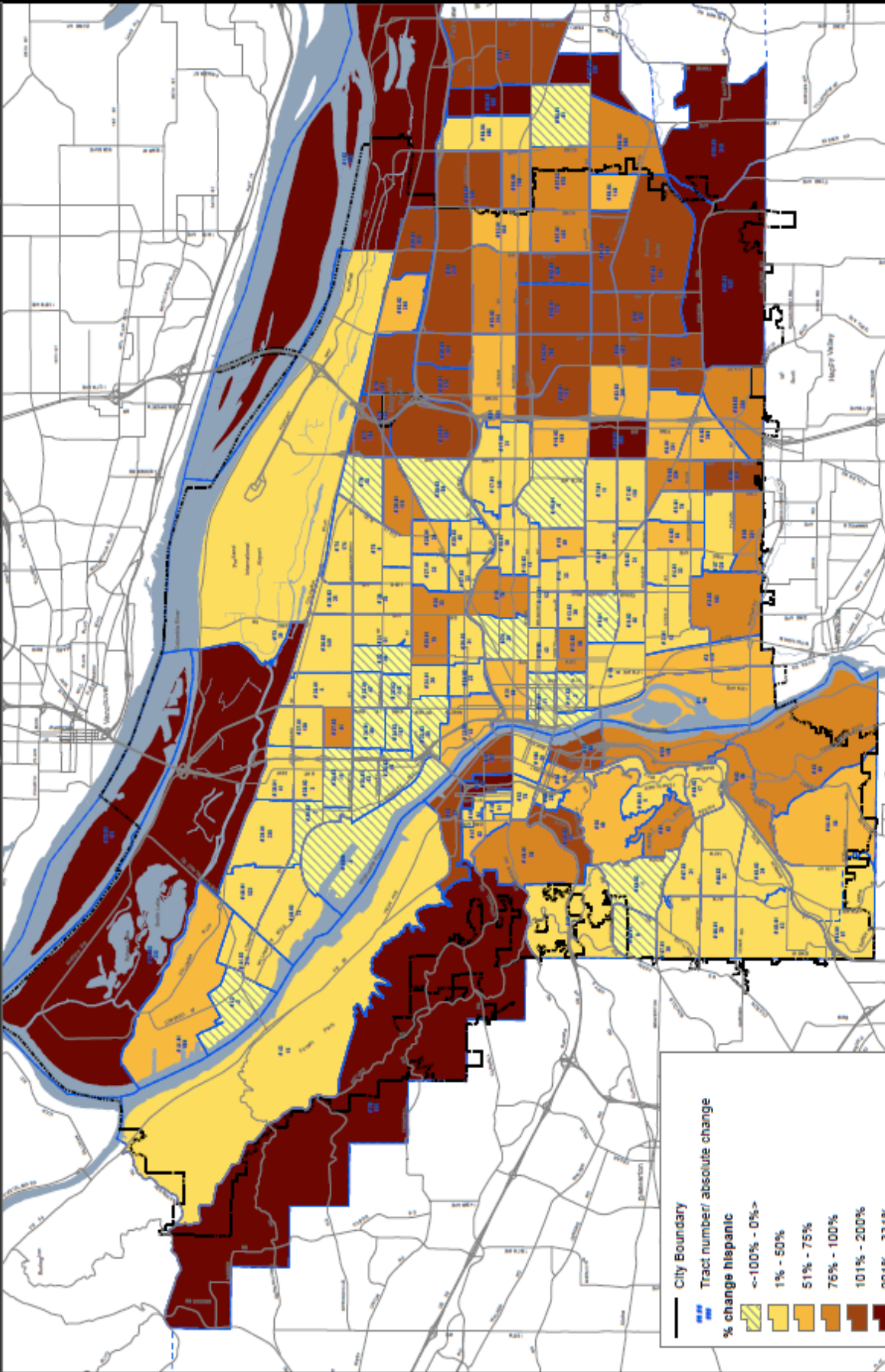
Bureau of Planning and Sustainability
Innovation. Collaboration. Practical Solutions.
Ann Adams, Mayor • Susan E. Williams, Director



Bureau of Planning and Sustainability
Innovation. Collaboration. Practical Solutions.



August 5, 2011

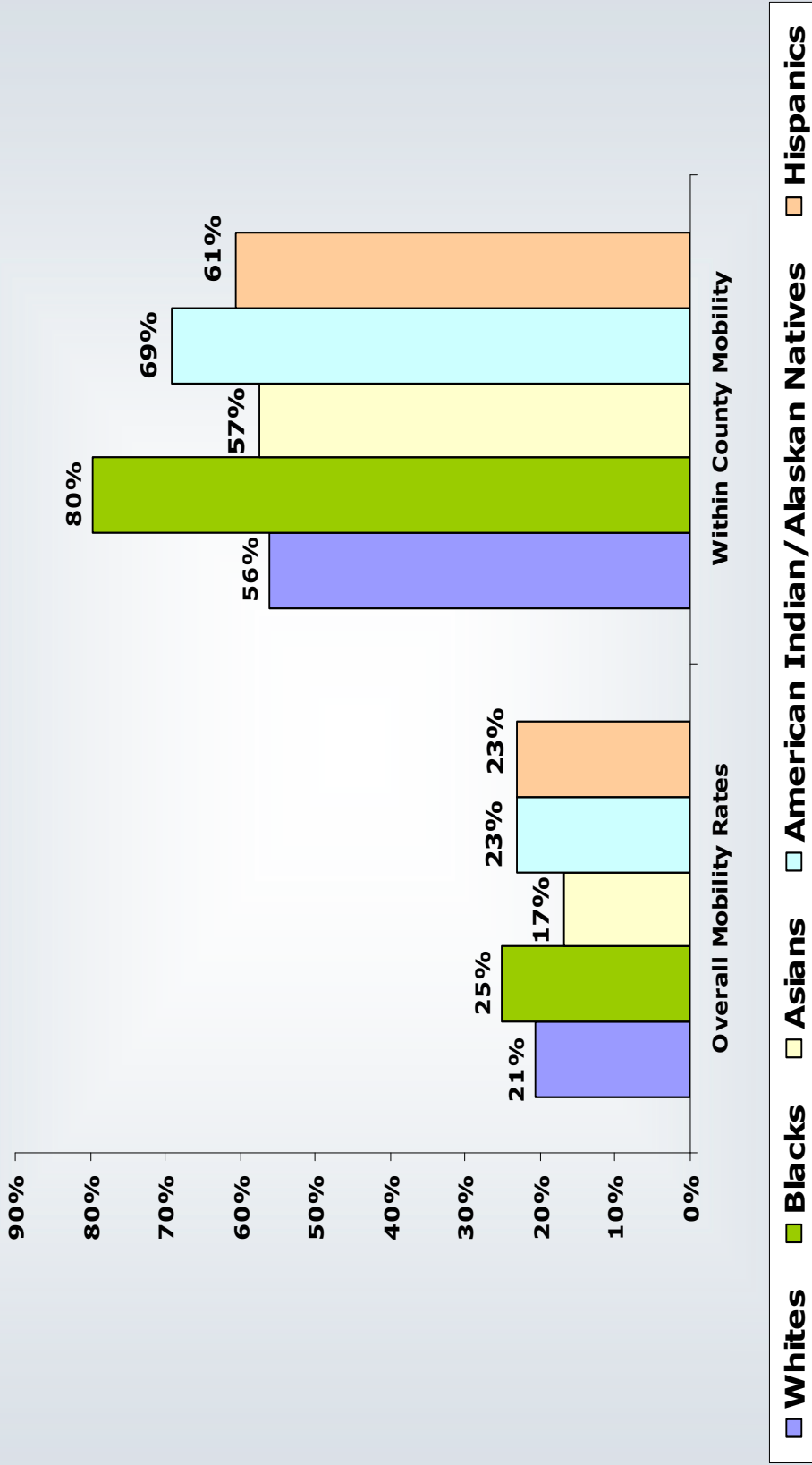


Geographic Mobility

Portland



Geographic Mobility within Racial Groups & Hispanics: 2005-2009



Income Profile

Portland



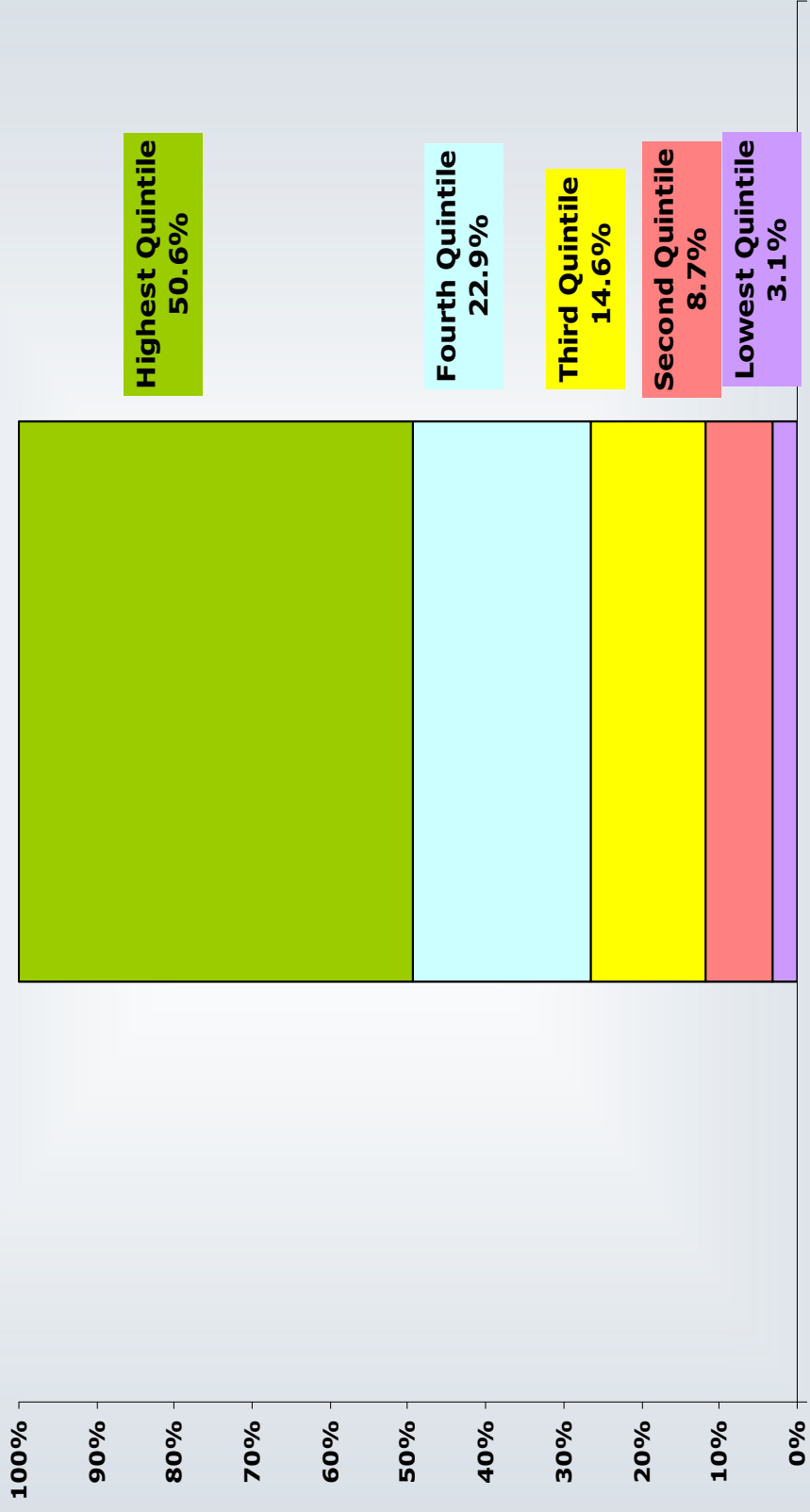
Median Household Income (MHI) for Racial & Ethnic Groups: 2005-2009

Race & Ethnicity	Median Household Income (MHI)	
	2000	2005-2009
White	\$41,476	\$50,661
Black	\$27,103	\$26,988
American Indian and Alaskan Native	\$30,471	\$34,542
Asian	\$42,576	\$50,933
Native Hawaiian and Pacific Islander		\$39,971
Some Other Race	\$31,190	\$36,518
Median Household Income (MHI) for the City	\$40,146	\$48,053
Hispanic Origin	\$32,371	\$36,246

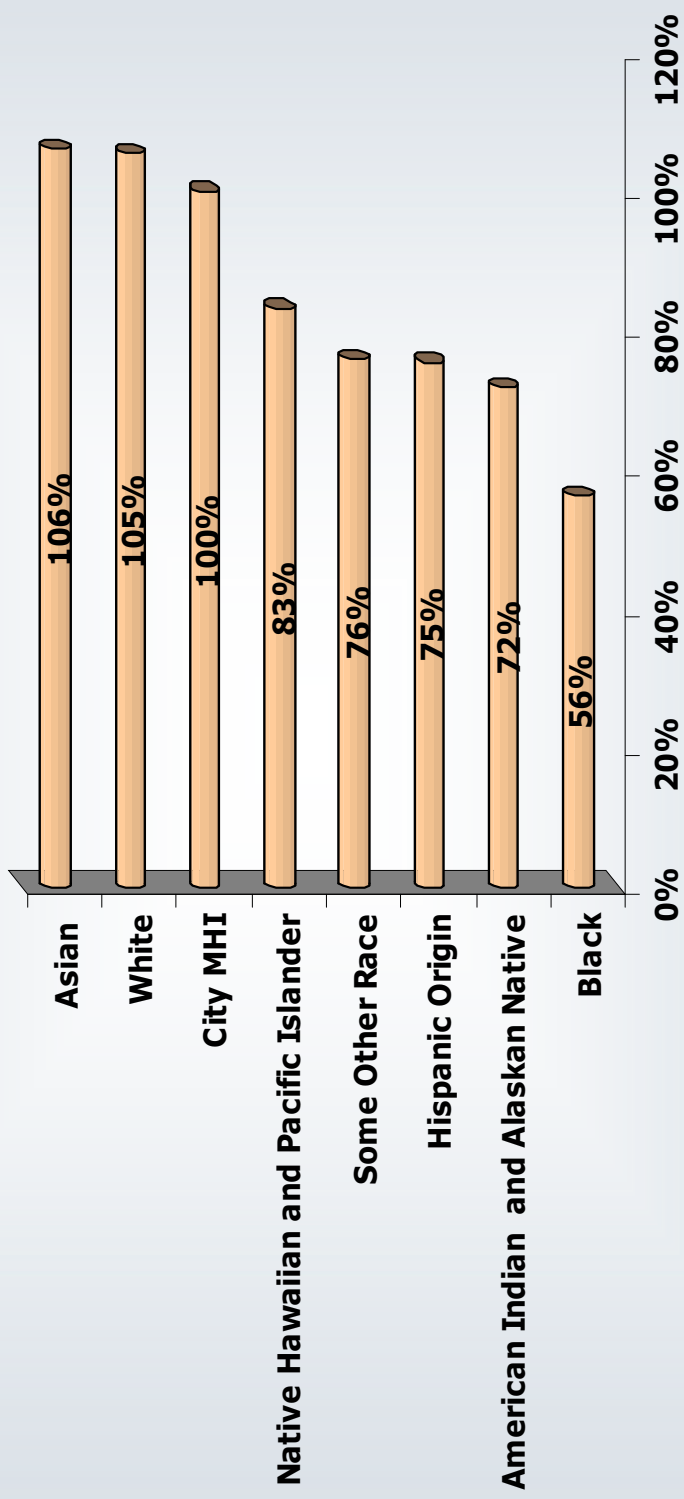
Source: Census 2000 & ACS 2005-2009



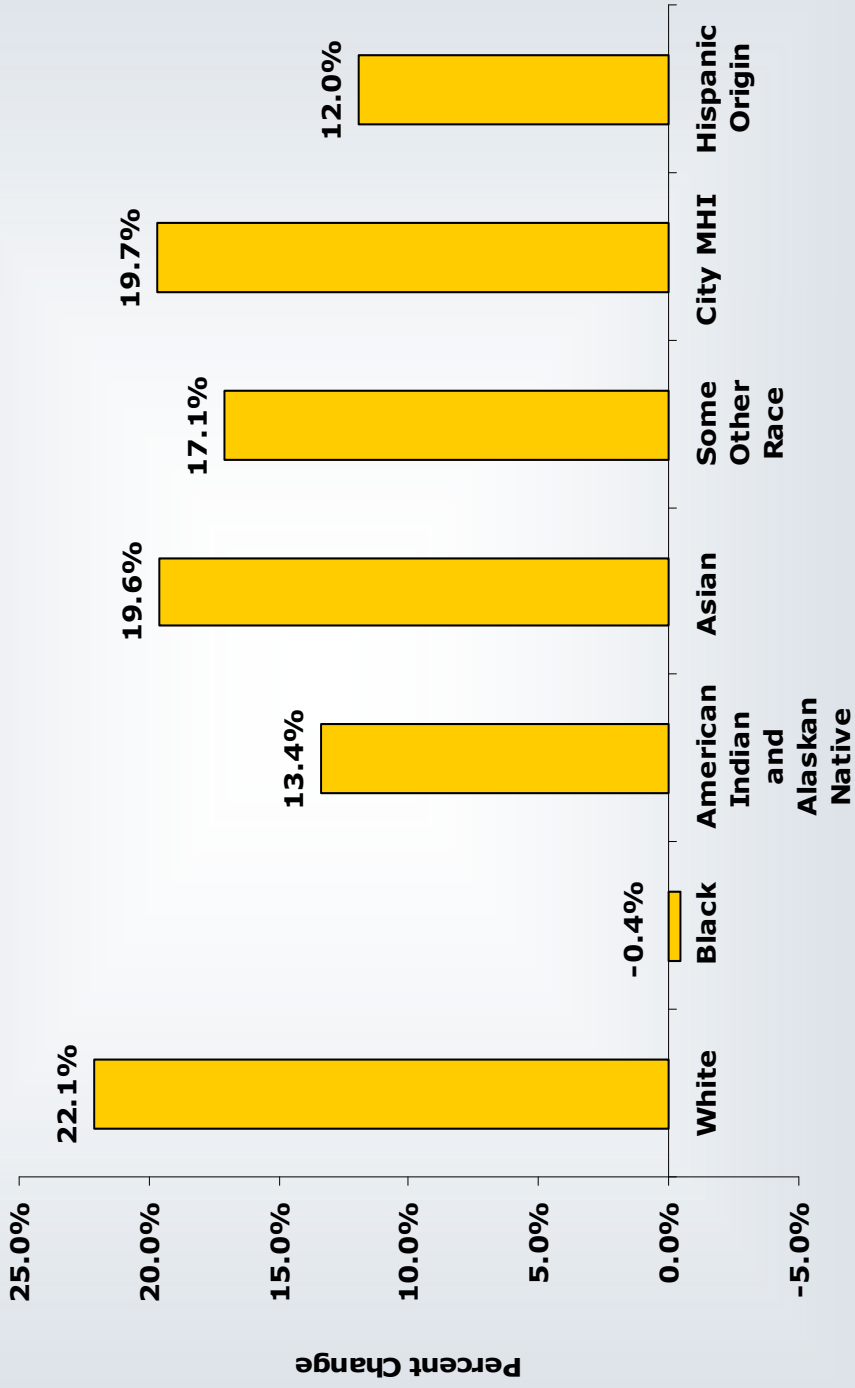
Share of Aggregate Income Portland Household Quintiles: 2005-2009

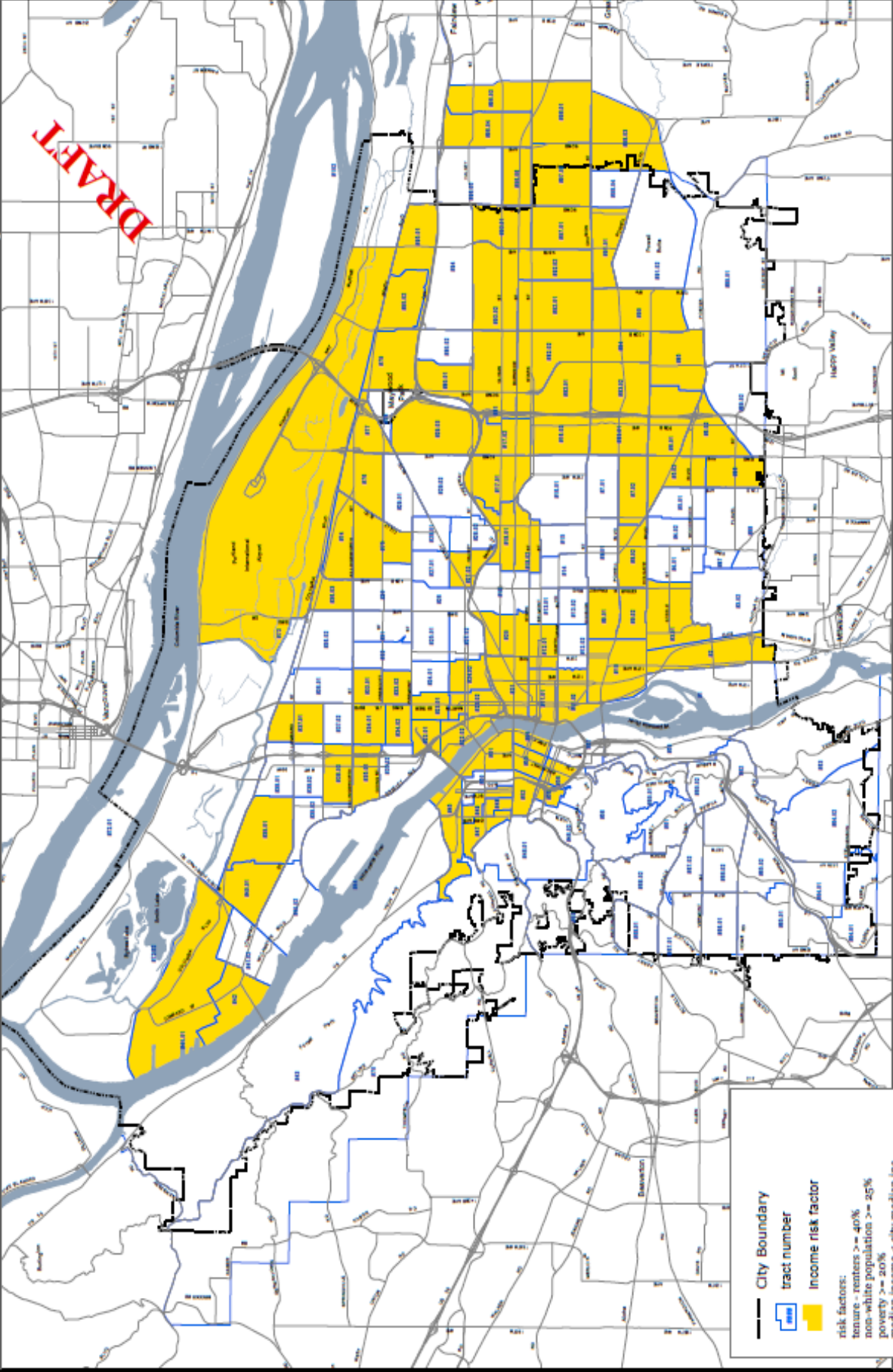


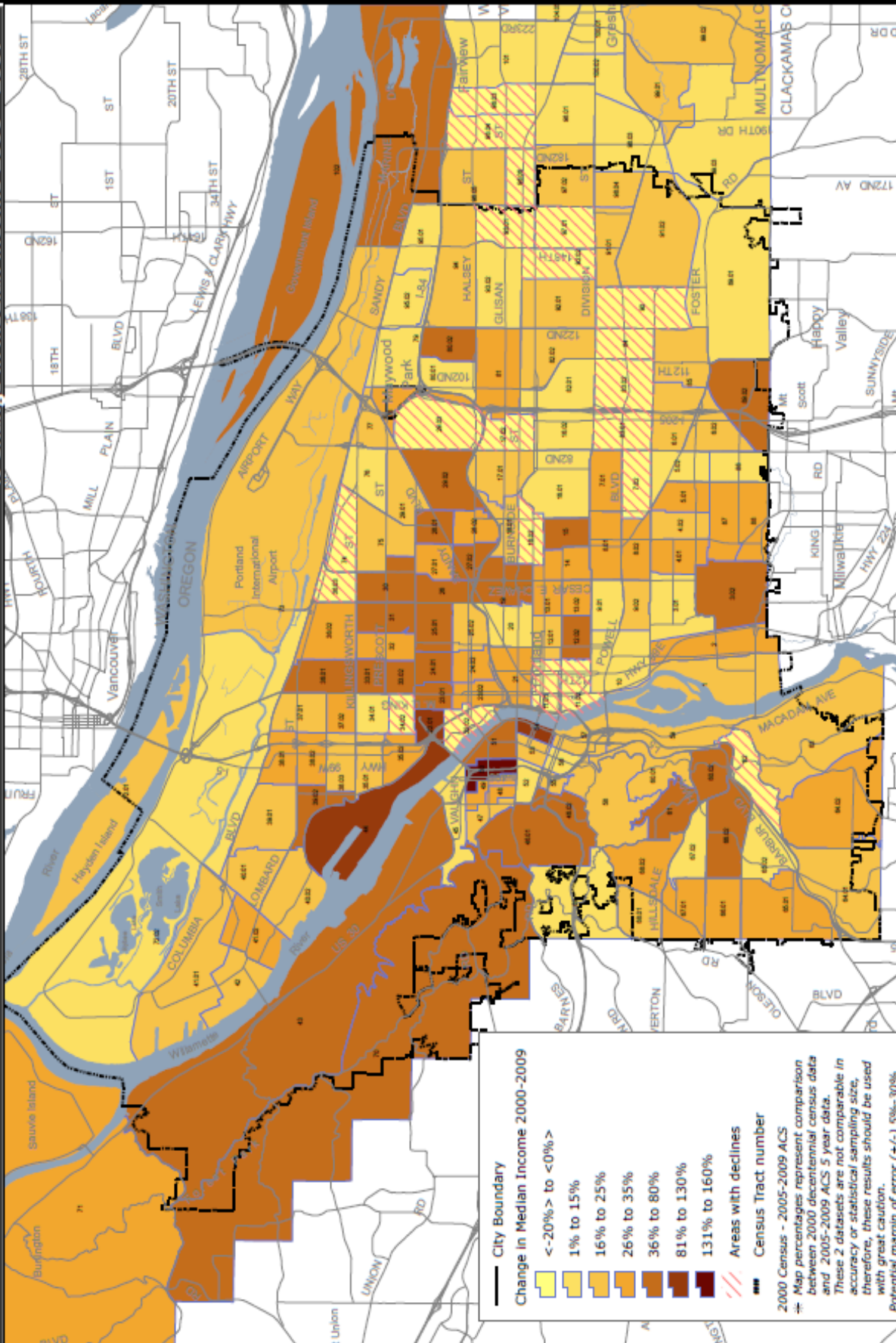
Income Differentials Between Racial & Ethnic Groups Compared to City MHI: 2005-2009



Change in MHI for Racial & Ethnic Groups: 2000 - 2009







Bureau of Planning and Sustainability
 Innovation. Collaboration. Practical Solutions.
 City of Portland, Oregon
 Zoe Adams, Mayor • Susan Anderson, Director

July 20, 2011

Poverty Characteristics

Portland

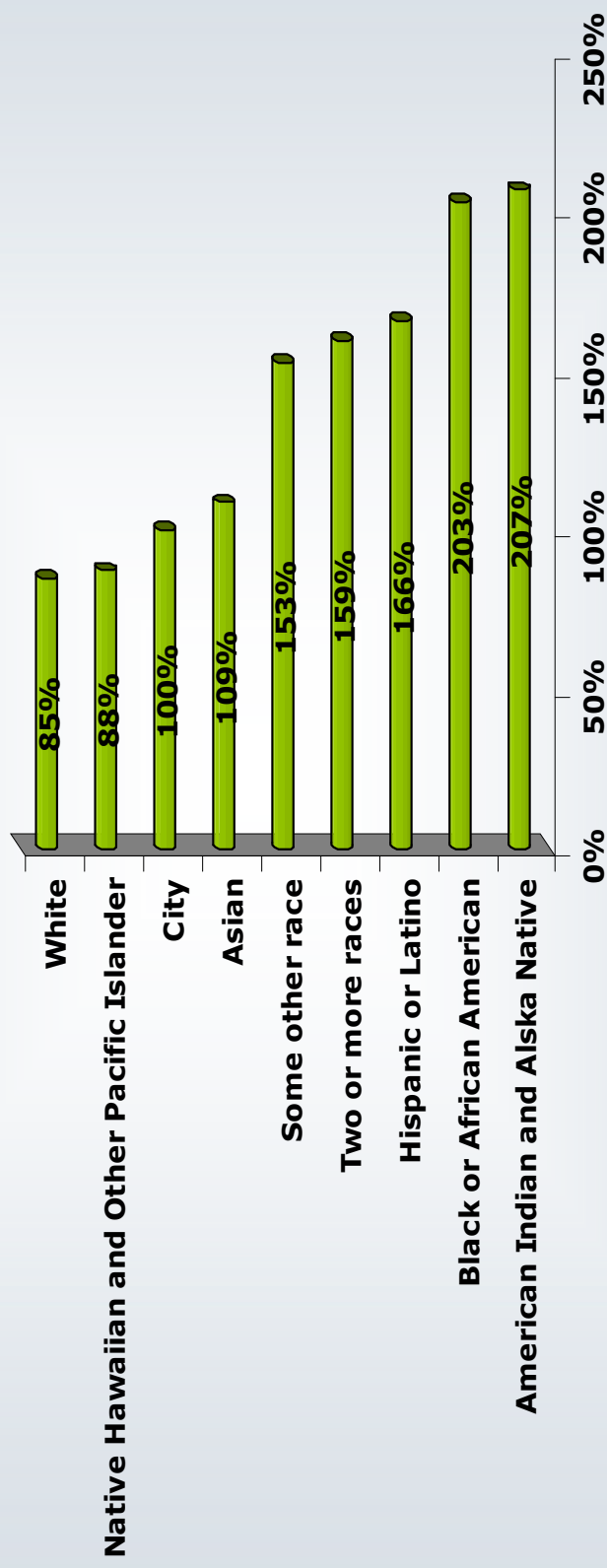


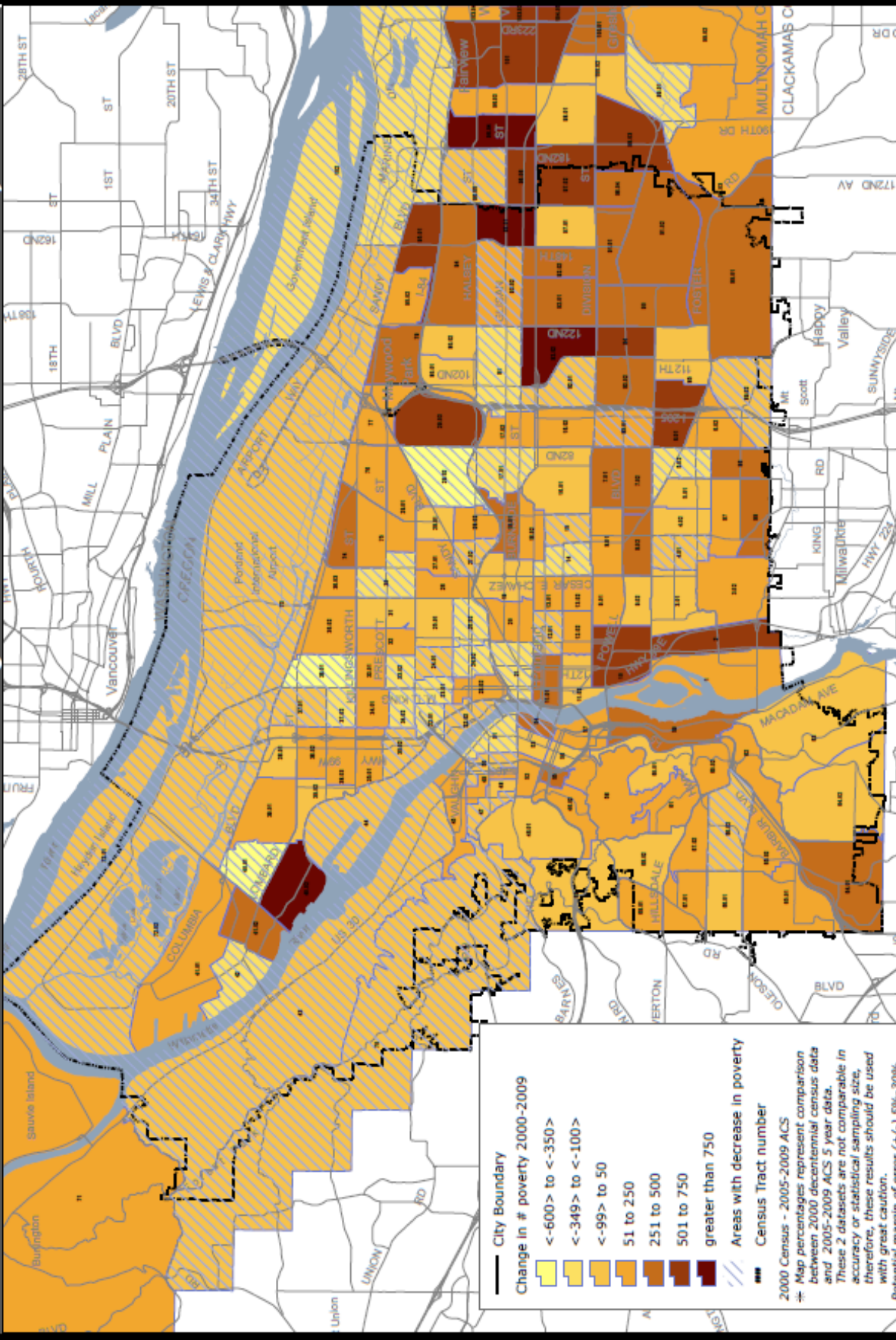
Population Below Poverty By Race & Ethnicity for Portland

	2000	2005-2009
City of Portland		
	13.1%	16.0%
Race		
White	11.0%	13.6%
Black or African American	26.0%	32.5%
American Indian and Alaska Native	23.0%	33.1%
Asian	13.1%	17.4%
Native Hawaiian and Other Pacific Islander	14.7%	14.0%
Some other race	27.1%	24.4%
Two or more races	20.0%	25.5%
Ethnicity		
Hispanic or Latino	24.1%	26.5%

Source: Census 2000, ACS 2005-2009

Differential in Poverty Rates Between Racial & Ethnic Groups Compared to City Poverty Rate: 2005-2009

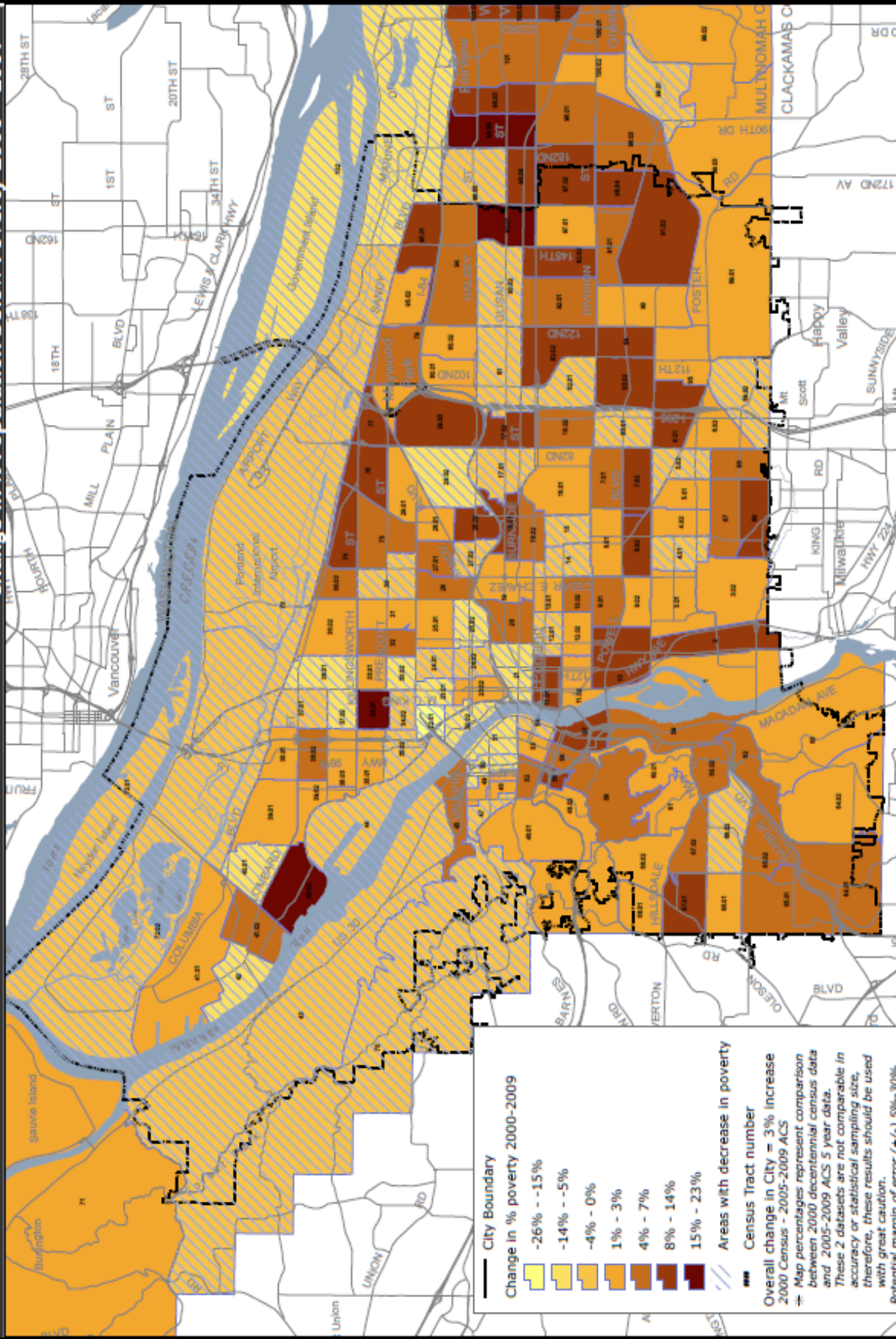




Source: City of Portland, Bureau of Planning & Sustainability
 July 20, 2011

Bureau of Planning and Sustainability
 Innovation. Collaboration. Practical Solutions.

City of Portland, Oregon
 Sam Adams, Mayor • Susan Anderson, Director



City Boundary

Change in % poverty 2000-2009

- 26% - -15%
- 14% - -5%
- 4% - 0%
- 1% - 3%
- 4% - 7%
- 8% - 14%
- 15% - 23%

Areas with decrease in poverty

Census Tract number

Overall change in City = 3% increase
2000 Census - 2005-2009 ACS

* Map percentages represent comparison between 2000 decennial census data and 2005-2009 ACS 5 year data. These 2 datasets are not comparable in accuracy or statistical sampling size, therefore, these results should be used with great caution.

Potential margin of error (+/-) 5%-30%

Source: City of Portland, Bureau of Planning & Sustainability
 July 30, 2011

