

- ↑ Unemployment
- ↑ Housing Costs

- ↑ More comprehensive Street Count outreach
- ↑ More complete reporting for some shelter categories

| Street Count | Unduplicated Individuals (Unsheltered) |
|--------------|--|
| 2007 | 1,438 |
| 2009 | 1,591 |
| 2011 | 1,718 |

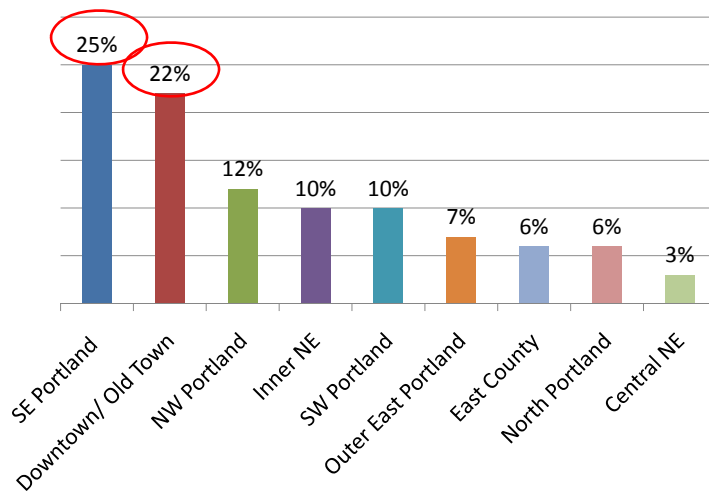
127 additional people
(8% increase) from 2009 to 2011

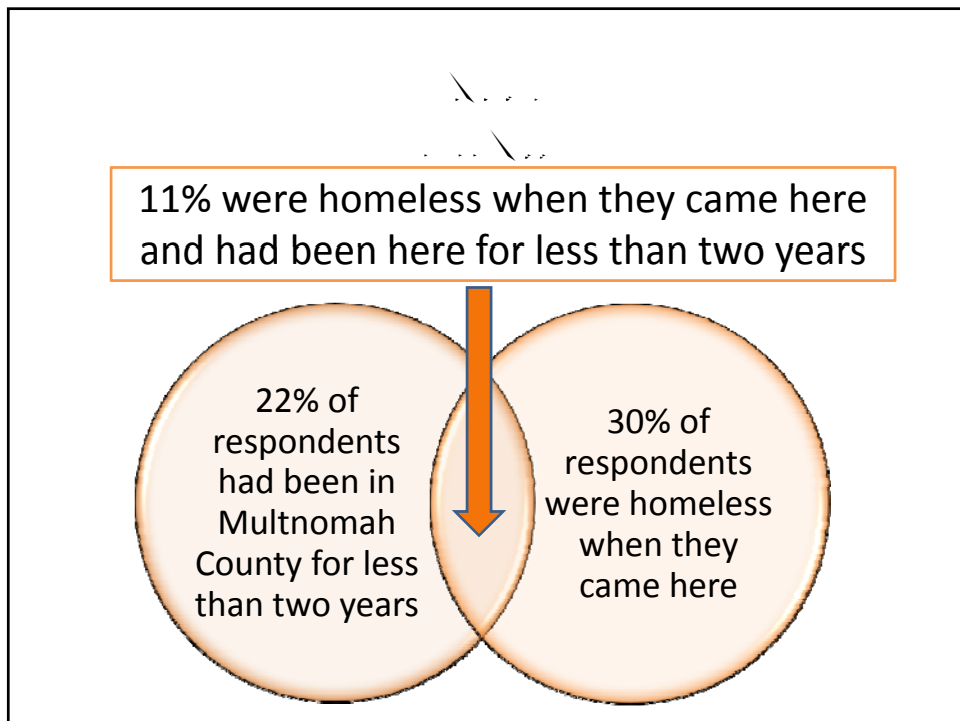
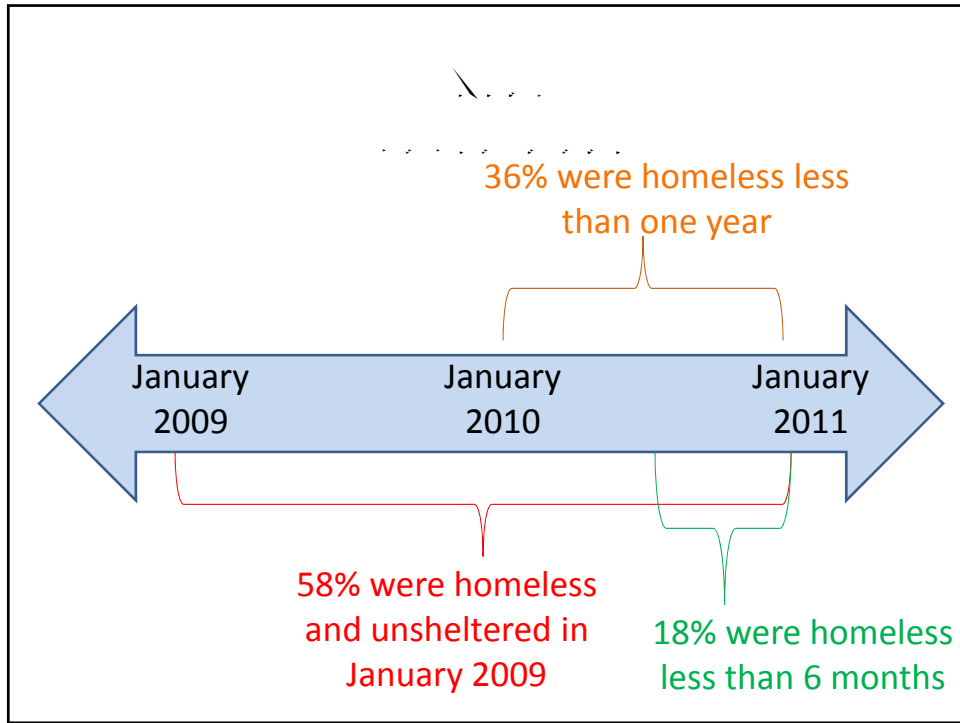
| Household Type | 2009 | 2011 |
|--------------------------|-------|-------|
| Individual adults | 1,225 | 1,279 |
| Couples without children | 248 | 323 |
| Families with children | 78 | 105 |
| Unaccompanied youth <18 | 8 | 11 |

35% increase in the number of unsheltered
families with children

| Household Type | 2009 | 2011 |
|--------------------------|------|------|
| Individual adults | 35% | 37% |
| Couples without children | n/a | 7% |
| Families with children | n/a | 1% |
| Unaccompanied youth <18 | n/a | <1% |
| Total | n/a | 46% |

Two percentage point increase in chronically homeless individual adults





- Family/ friends/ partner (34%)
- Like it/ heard good things about it (13%)
- Employment opportunities (13%)
- From here originally (13%)
- Access to services and resources (8%)

| | 2010 individuals | 2011 individuals |
|------------------------------|---------------------|---------------------|
| Emergency Shelter | 901 | 1002 |
| Motel Voucher | 50 | 7 |
| Transitional Housing | 1741 | 1928 |
| Rent/ Mortgage Assistance | 1069 | 1042 |
| Permanent Supportive Housing | 687 | 847 |
| Turnaways | 317 | 352 |

| Household Type | 2010 individuals | 2011 individuals |
|--------------------------|------------------|------------------|
| Individual adults | 39% | 44% |
| Couples without children | 2% | 1% |
| Families with children | 59% | 53% |
| Unaccompanied youth <18 | <1% | <1% |

(Among those unsheltered, in emergency shelter, motel voucher or transitional housing)

Veterans: 12%

Domestic violence: 18%

Disabling conditions: 50%

