



# 2010 Census Briefing for Planning & Sustainability Commission June 14, 2011

From: Steve Dotterer  
Uma Krishnan



Bureau of Planning and Sustainability  
Innovation. Collaboration. Practical Solutions.

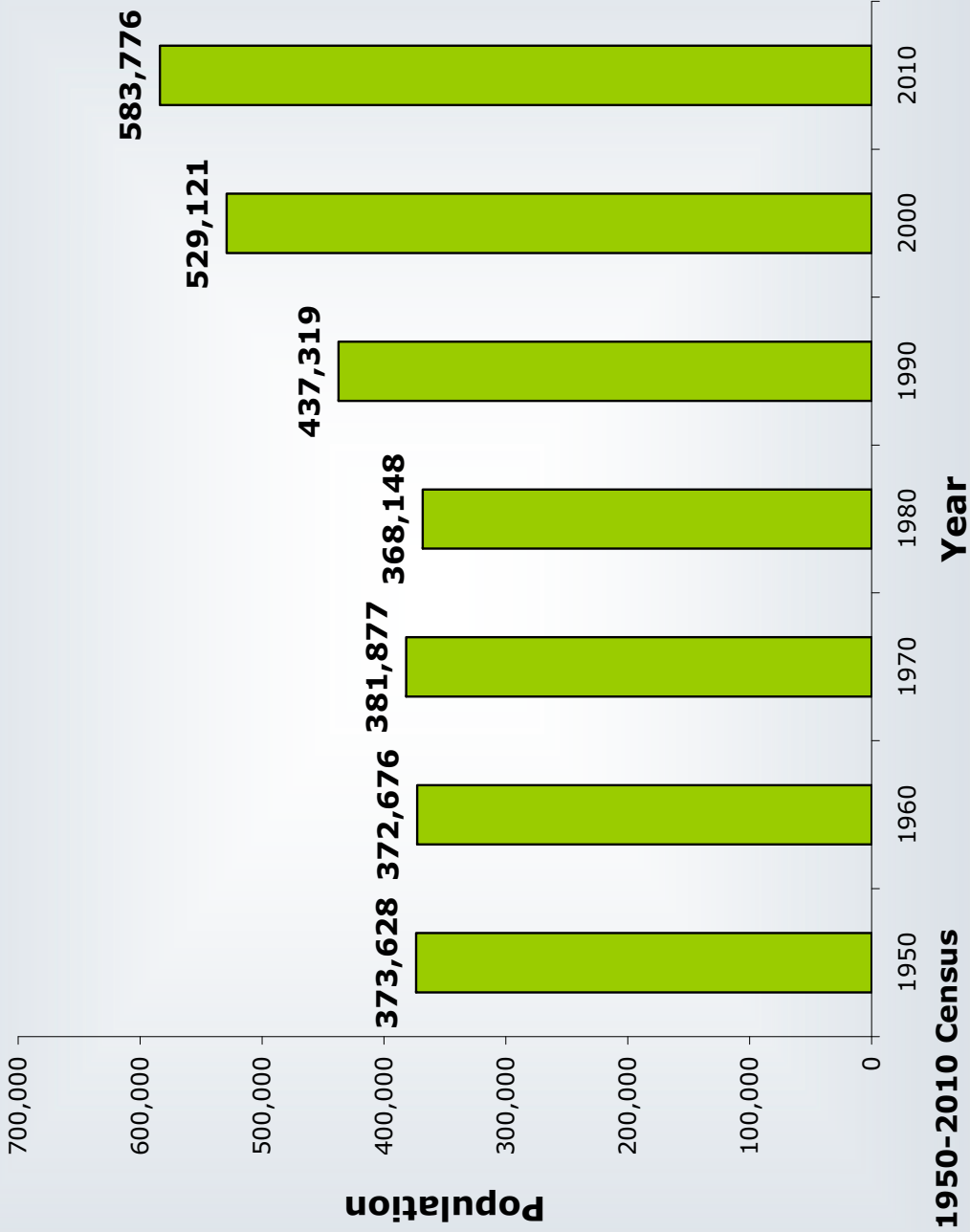


# Portland's Population: 2010

<b>Portland's 2010 population</b>	<b>583,776</b>
<b>Percent Change</b>	<b>10.3%</b>
<b>Absolute Population Gain</b>	<b>54,655</b>
<b>Addition due to annexation</b>	<b>&lt;25 people</b>

**Source: Census 2010**

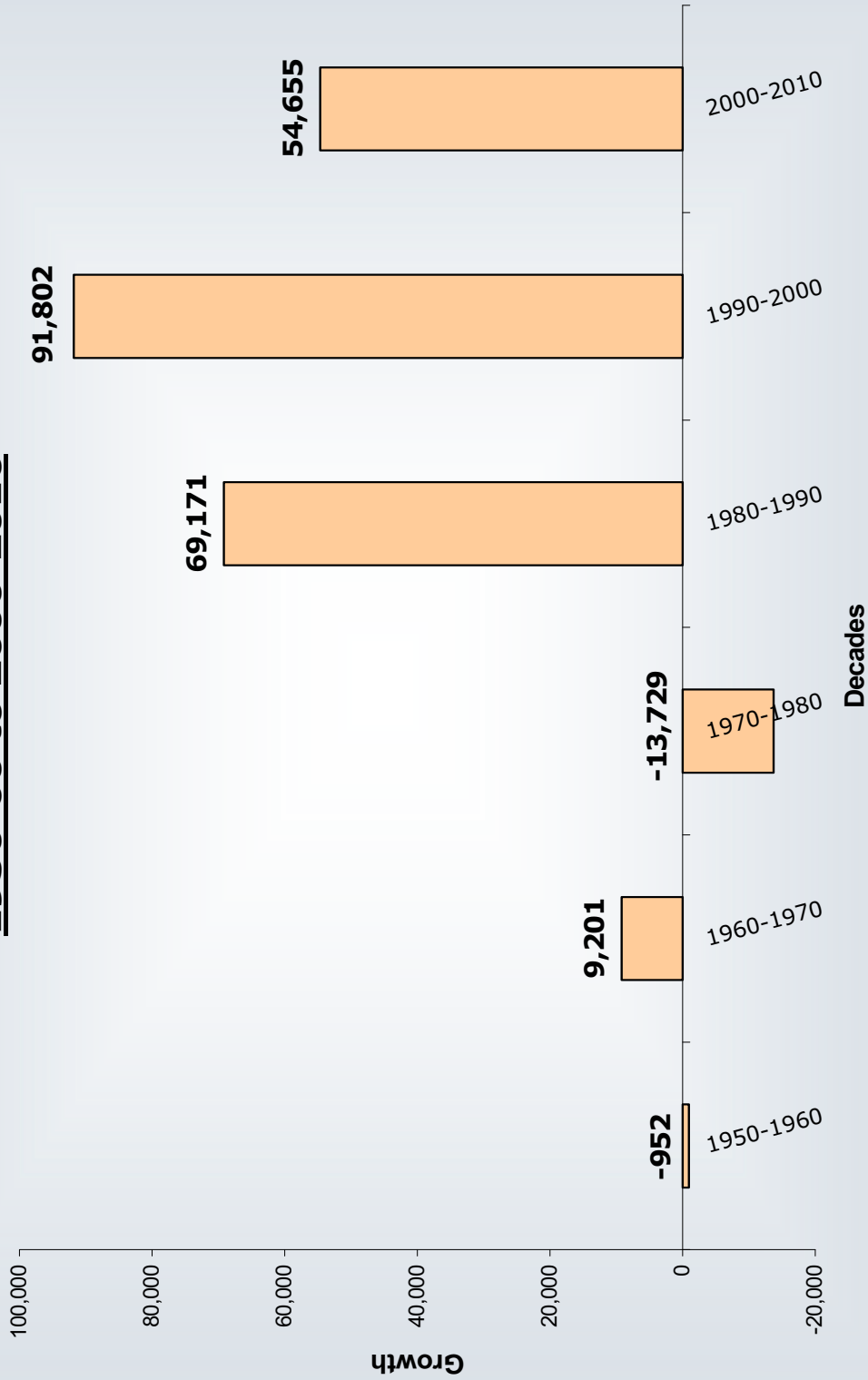
## Population Growth in the City of Portland: 1950-2010



Source: 1950-2010 Census



# Portland's Population Change: 1950-60 to 2000-2010



Source: 1950-2010 Census



# Portland's Share of Regional Population

Geography	Population 2000	Population 2010	Percent Growth	Portland's 2010 Population Share	Portland's Share of Population Growth During 2000-2010
Portland	529,121	583,776	10%	100%	100%
Multnomah County	660,486	735,334	11%	79.3%	73%
3-County Metro (Clackamas, Multnomah, Washington)	1,444,219	1,641,036	14%	36%	28%
7-County Metro (Portland-Vancouver-Hillsboro-OR-WA Metro)	1,927,881	2,226,009	15%	26%	18%

Source: Census 2000, 2010

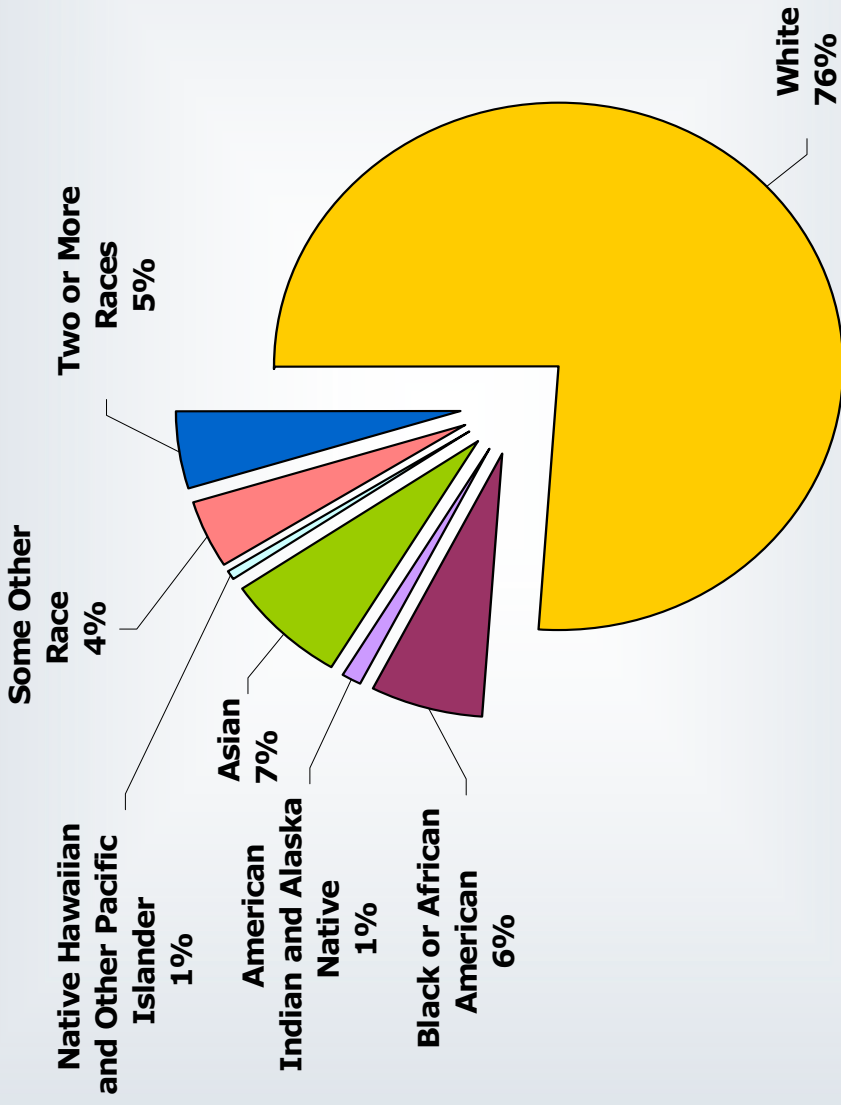


# Population Change in Peer Cities

Cities	Population 2000	Population 2010	Change, 2000-2010	
			Number	Percent
Denver	554,636	600,158	45,522	8.2%
Minneapolis	382,618	382,578	-40	0.0%
Portland	529,121	583,776	54,655	10.3%
San Francisco	776,733	805,235	28,502	3.7%
San Jose	894,943	945,942	50,999	5.7%
Seattle	563,374	608,660	45,286	8.0%

Source: Census 2000, 2010

# Racial Distribution of Portland, 2010



Source: 2010 Census

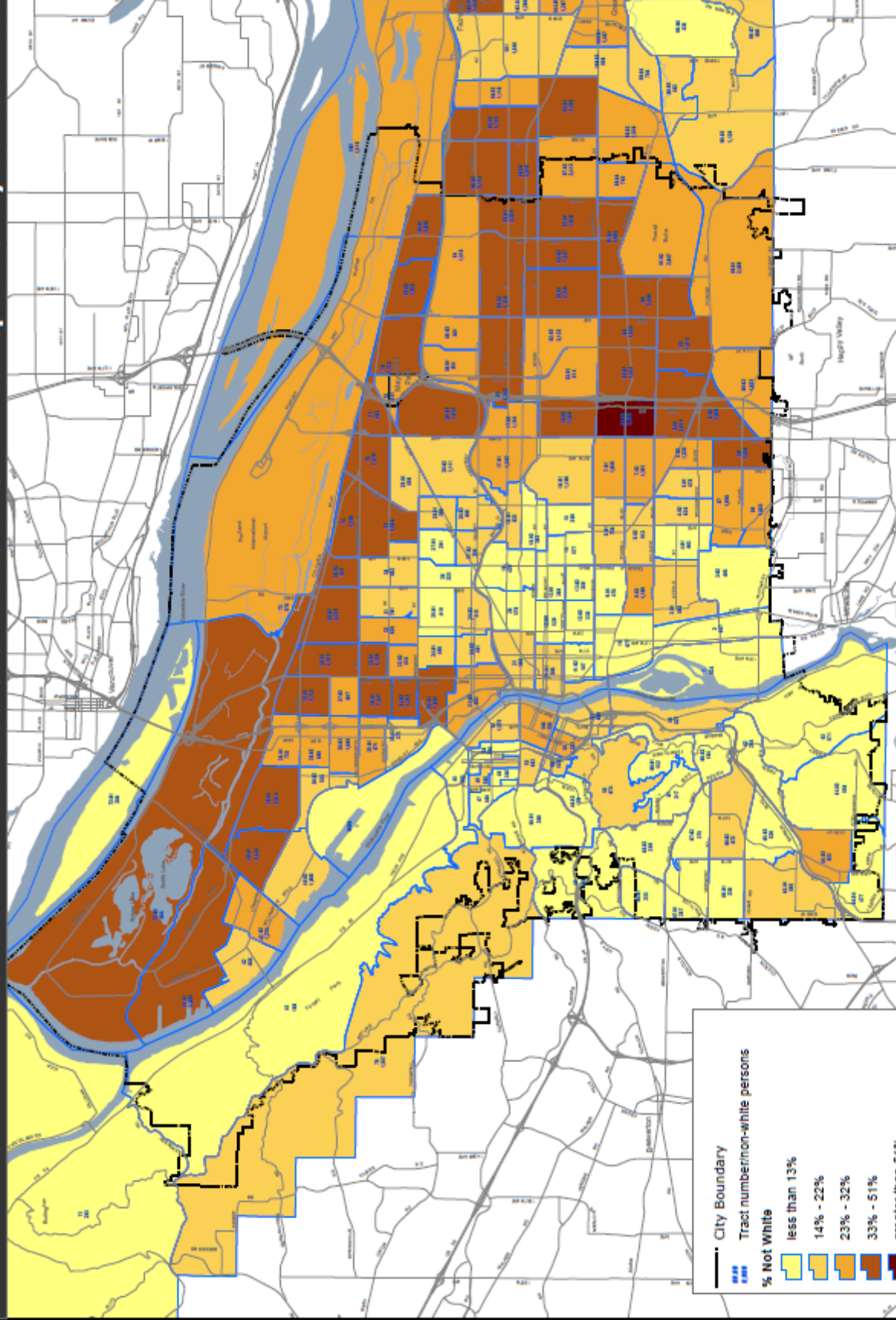
# Population Change by Race, Portland 2010 Race Category

Race Category	Population	% Share	Absolute Increase 2000-2010
<b>One race</b>	<b>556,496</b>	<b>95.3</b>	<b>49,330</b>
White	444,216	76.1	31,975
Black or African American	36,695	6.3	1,580
American Indian and Alaska Native	5,991	1	404
Asian	41,692	7.1	8,222
Native Hawaiian & Other Pacific Islander	3,109	0.5	1,116
Some Other Race	24,793	4.2	6,033
<b>Two or More Races</b>	<b>27,280</b>	<b>4.7</b>	<b>5,325</b>

Source: Census 2000, 2010

Note: Historically, Communities of Color experience “undercounting” due to multiple reasons. A report titled *Communities of Color* released in 2009 documents population counts that are community verified for Multnomah County. In particular, the Native American Count is reported to be 37,745 for the County





Universe Total Persons  
 Source: City of Portland, Bureau of Planning & Sustainability



March 22, 2011



**Bureau of Planning and Sustainability**  
 Innovation. Collaboration. Practical Solutions.



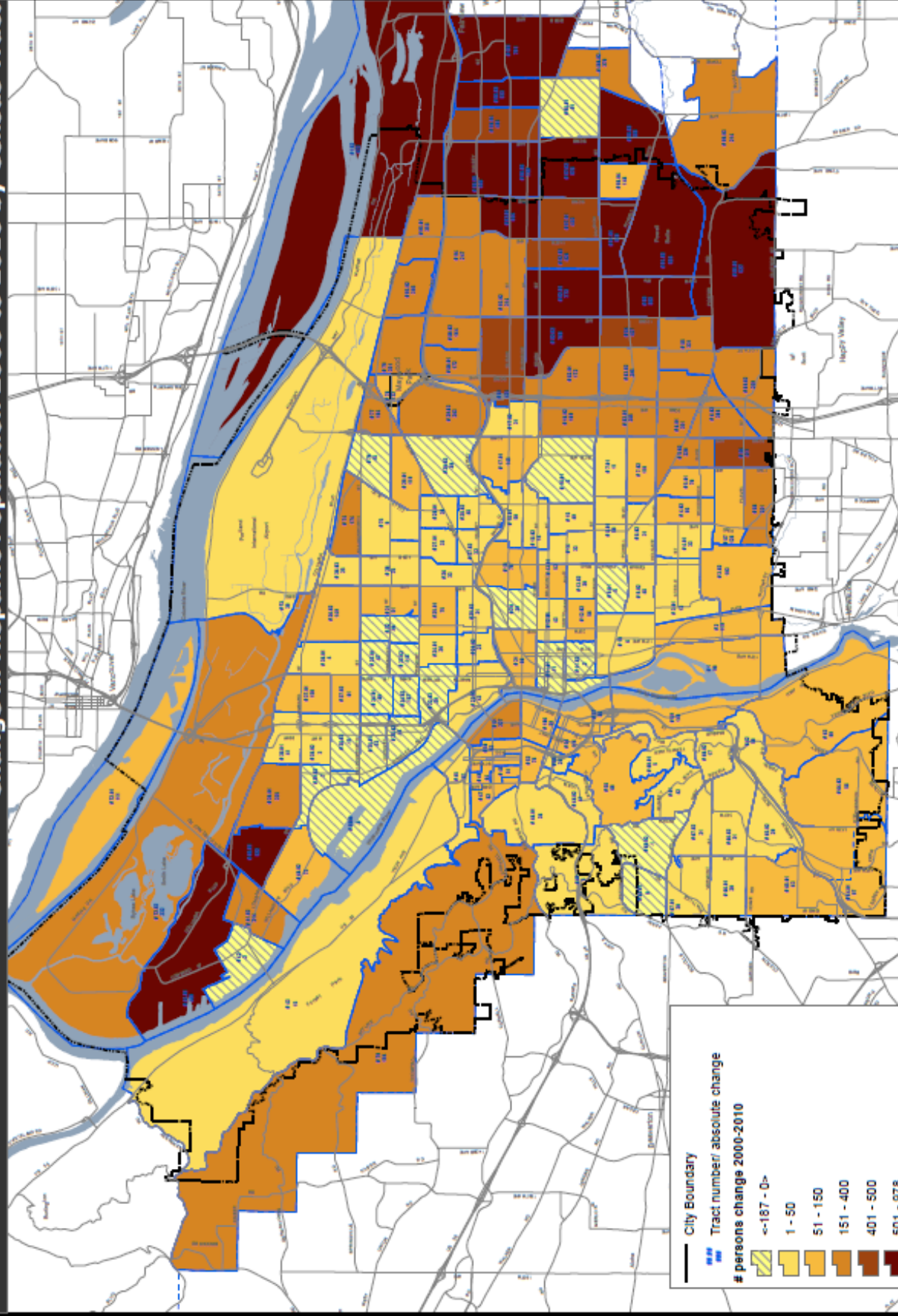


# Population Distribution by Ethnicity, Portland

	2010		2000	
	Number	%	Number	%
Hispanic or Latino (of any race)	54,840	9.4%	36,058	6.8%
Non-Hispanic or Latino (of any race)	528,936	90.6%	493,063	93.2%
<b>Absolute &amp; Percent Increase in Hispanics</b>	<b>18,782 (52% increase)</b>			
<b>Absolute &amp; Percent Increase in Non-Hispanics</b>	<b>35,873 (7% increase)</b>			

Source: Census 2000, 2010





March 24, 2011  
 City of Portland Bureau of Planning & Sustainability  
 500 NE Oregon Street, Suite 2000  
 Portland, Oregon 97232



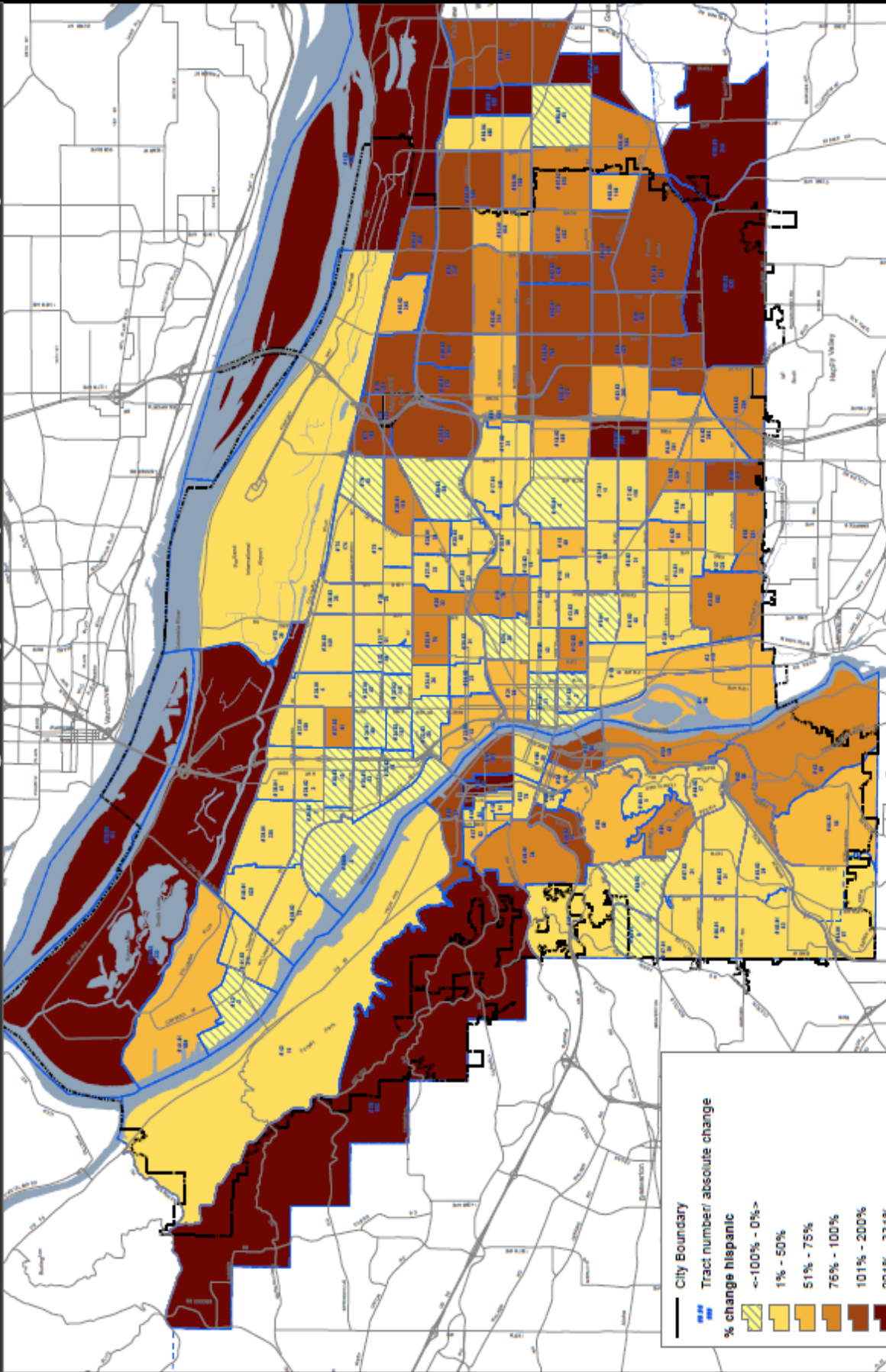
0 3,500 7,000 10,500 Feet

Copyright information for mapping software:  
 Stateworks, Inc. 2008, 2009, 2010, 2011. All rights reserved.  
 ESRI, Inc. 2008, 2009, 2010, 2011. All rights reserved.  
 Microsoft, Inc. 2008, 2009, 2010, 2011. All rights reserved.  
 2008, 2009, 2010, 2011. All rights reserved.

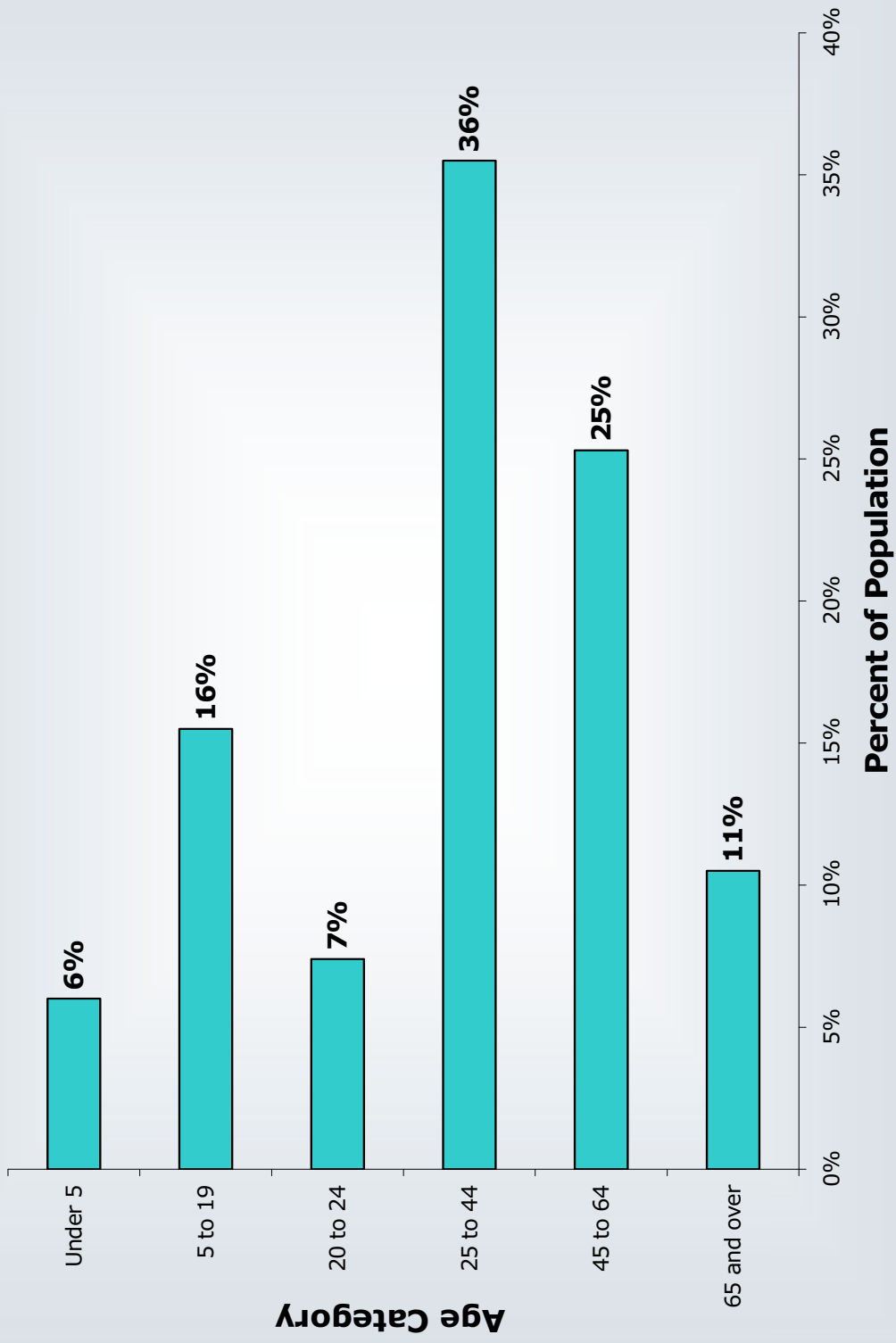


Bureau of Planning and Sustainability  
 Innovation. Collaboration. Practical Solutions.





## Age Distribution of People in Portland, 2010



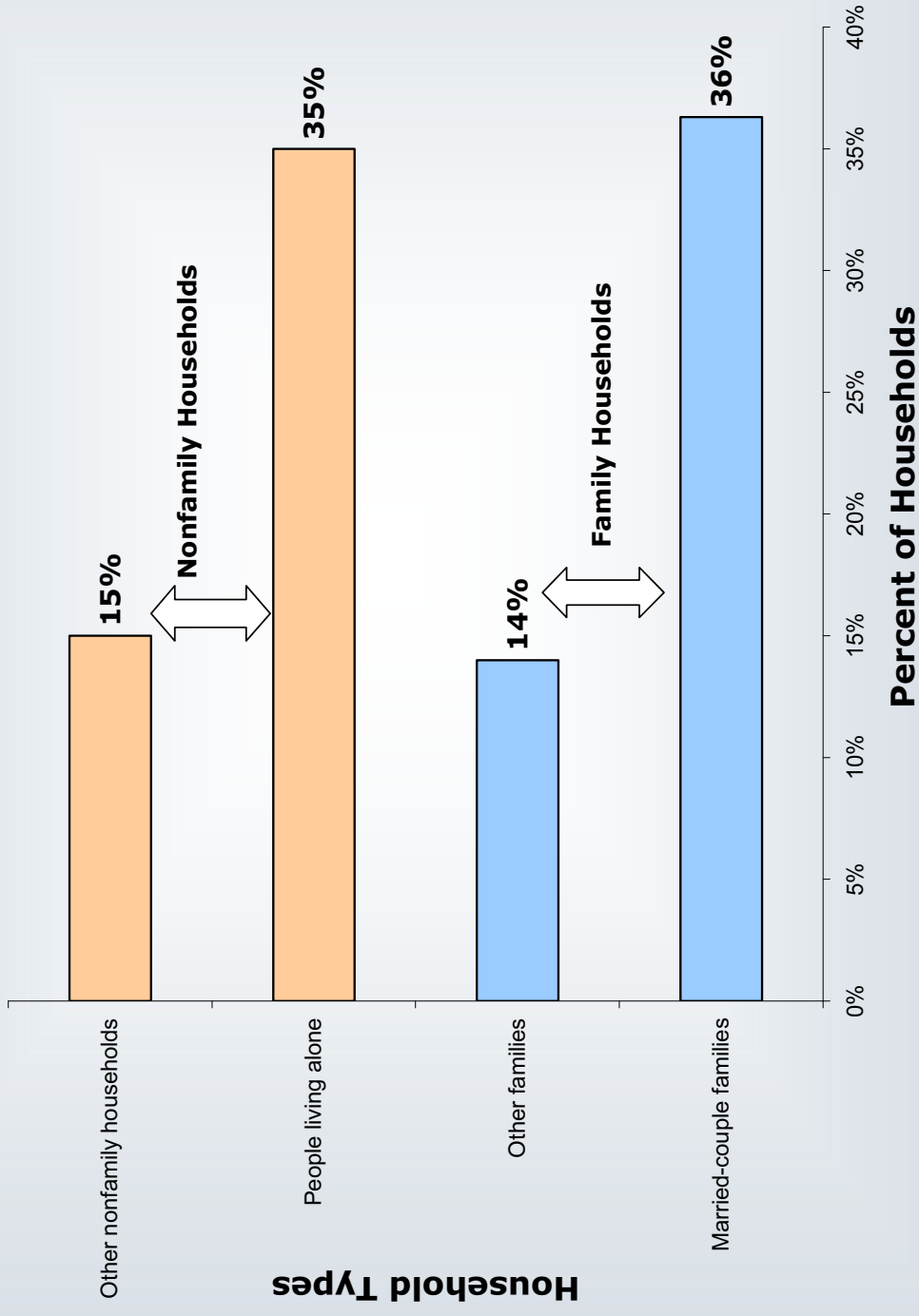
# Nature of Households in Portland

	Number	Percent
<b>Total population</b>	<b>583,776</b>	<b>100</b>
<b>In households</b>	<b>566,022</b>	<b>97</b>
<b>In group quarters</b>	<b>17,754</b>	<b>3</b>
<b>Number of Households</b>	<b>248,546</b>	
<b>Family households</b>	<b>125,506</b>	<b>50.5</b>
<b>Nonfamily households</b>	<b>123,040</b>	<b>49.5</b>
<b>Average household size</b>	<b>2.28</b>	
<b>Average family size</b>	<b>2.99</b>	

**Source: Census 2000, 2010**



# Household Types in Portland: 2010





# Census Tract Level Findings



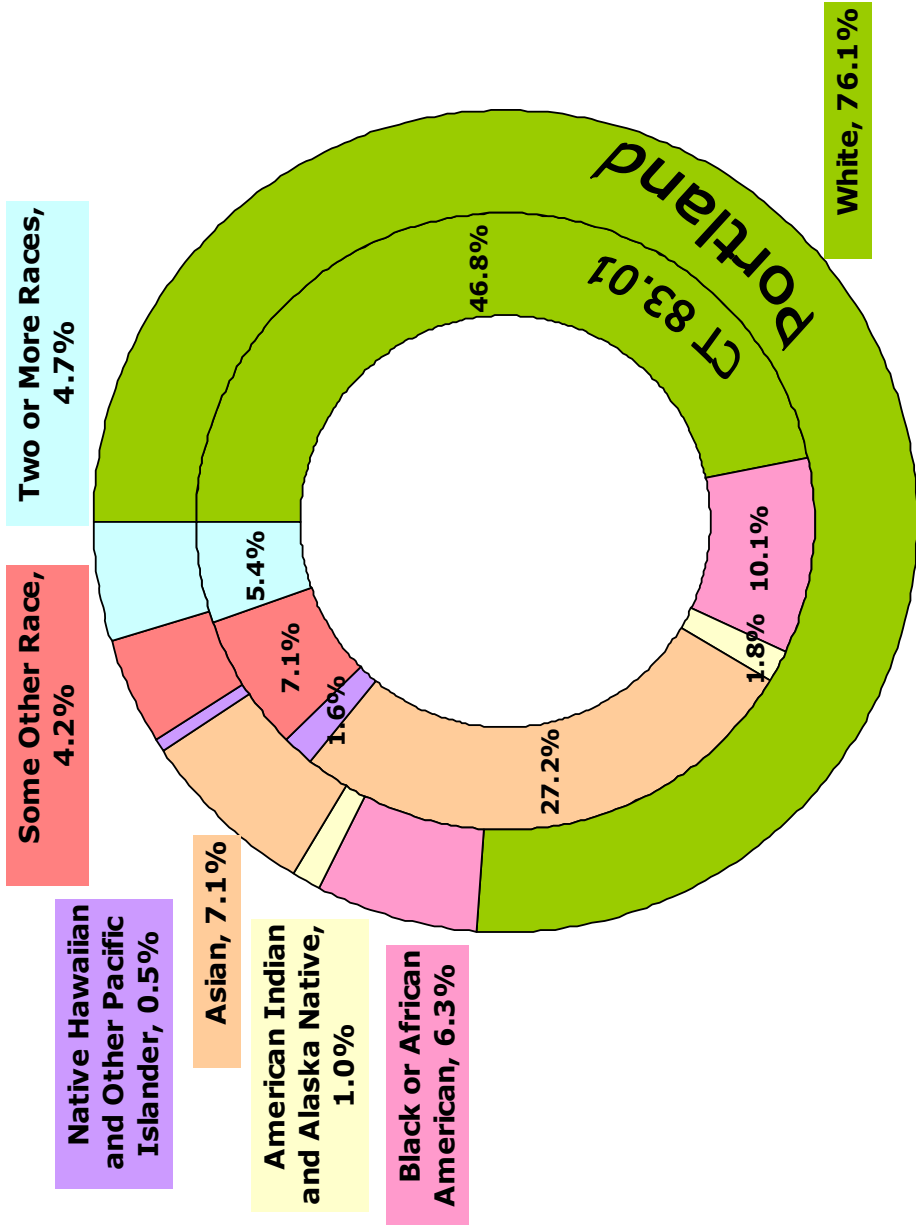
## Census Tract Level Analysis: 2010

Demographic Characteristics	Census Tract	
	Value	#
Greatest Absolute Gain	(+) 4314 (Population Gain)	51
Biggest Absolute Loss	(-) 572 (Population Loss)	29.02
Maximum Population Density	26830 (People/Sq Miles)	56
Minimum Population Density	98 (People/Sq Miles)	43
		Part of Neighborhood
		Pearl & Old Town- China Town
		Roseway & Rose City Park
		Downtown
		Forest Park & Linnton

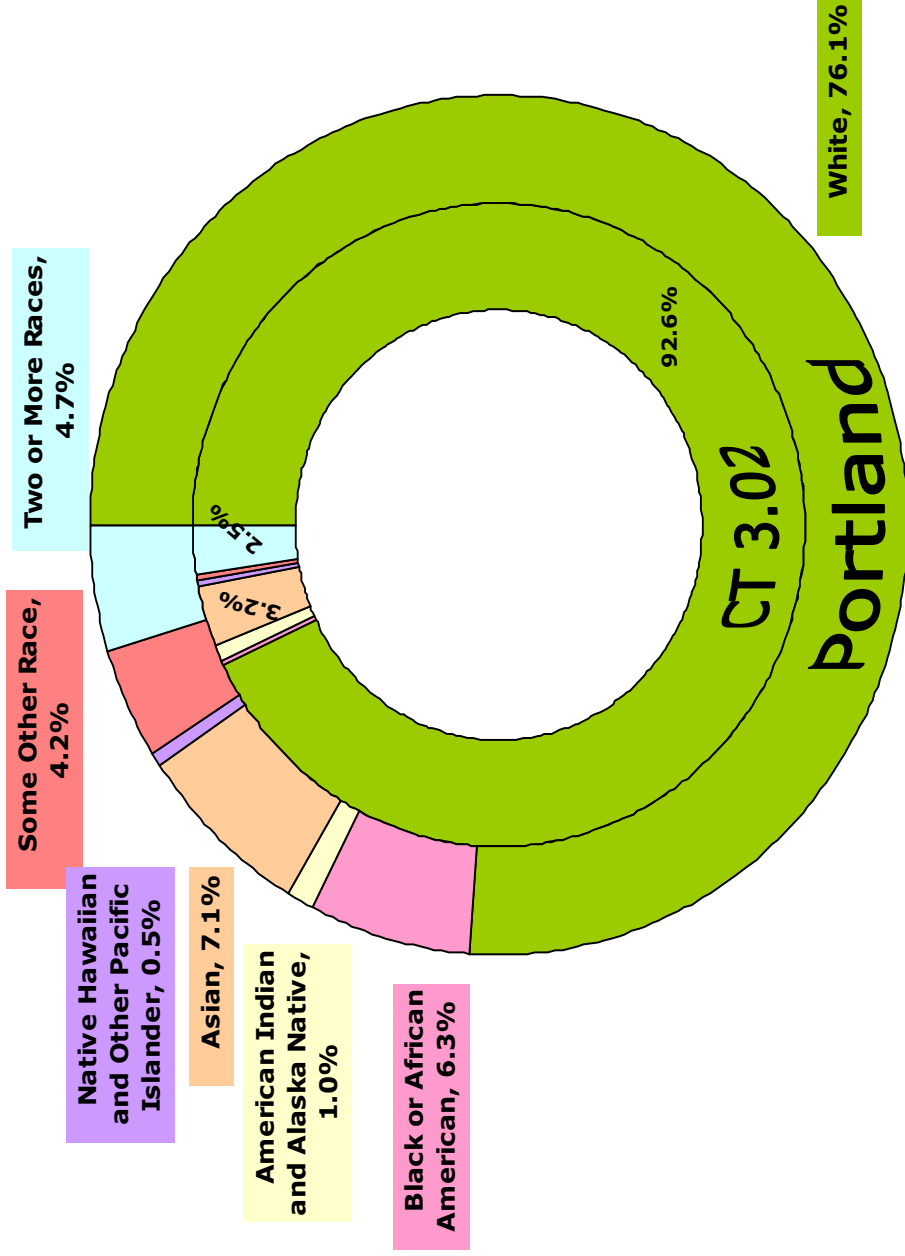
Source: Census 2010



## Racial Distribution in Portland vs. Racial Distribution in CT with Maximum Diversity (CT 83.01, Part of Powellhurst Gilbert)



# Racial Distribution in Portland vs. Racial Distribution in CT with Minimum Diversity (CT 3.02 , Part of Woodstock)



**Draft 20-Minute Neighborhood Geographies**  
 City of Portland | Bureau of Planning & Sustainability | September 7, 2010

**Map Key**

**Commercial Districts**  
 Based on the 20-Minute Neighborhoods Analysis, commercial districts are shown as areas with concentrations of jobs and amenities

**Commercial Area**  
 Small nodes to large districts

**Corridor or Main Street**  
 Designated 20-40 Center

**Commercial Hub**  
 Having significant neighborhood geography

**20-Minute Neighborhood Geographies**

- Central City
- Inner Neighborhoods
- Western Neighborhoods
- Eastern Neighborhoods
- River Neighborhoods

Lighter shades indicate geographies without a commercial hub

