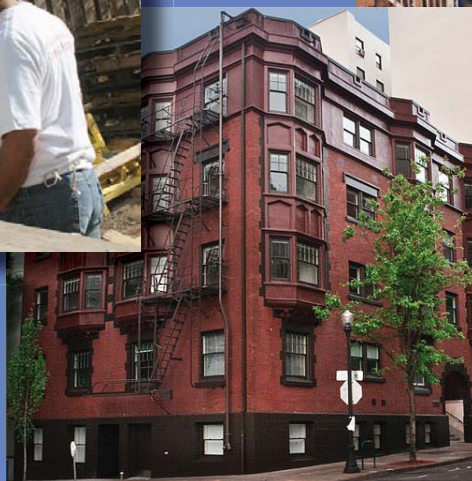


CITY OF PORTLAND - CITY OF GRESHAM - MULTNOMAH COUNTY

FAIR HOUSING PLAN

2011

An Analysis of Impediments to Fair Housing Choice
and the Strategies to Address Them



ACKNOWLEDGEMENTS

FAIR HOUSING ADVISORY COMMITTEE

ELISA AGUILERA, COMMUNITY ALLIANCE OF TENANTS
DONNA CHILDS, ELDERS IN ACTION
ANDREW COLAS, COLAS CONSTRUCTION, INC.
ALYSSA CUDMORE, FAIR HOUSING COUNCIL OF OREGON
JEANNE DAVIDSON, PORTLAND YOUTH & ELDERS COUNCIL
DONITA FRY, PORTLAND YOUTH AND ELDERS COUNCIL, NAYA FAMILY CENTER
MOLOY GOOD, FAIR HOUSING COUNCIL OF OREGON
CASHAUNA HILL, OREGON LAW CENTER
DEBORAH IMSE, METRO MULTI-FAMILY HOUSING ASSOCIATION
LIV JENSSEN, MULTNOMAH COUNTY DEPT. OF COMMUNITY JUSTICE
ETHAN KROW, CENTER FOR INTERCULTURAL ORGANIZING
WALTER LANDER, PROVIDENCE HOSPITAL
CHRISTINE LAU, ASIAN HEALTH & SERVICE CENTER
BEN LOFTIS, PORTLAND COMMUNITY REINVESTMENT INITIATIVES, INC.
PHIL OWEN, RENTAL HOUSING ASSOCIATION OF GREATER PORTLAND
ANDREW RILEY, CENTER FOR INTERCULTURAL ORGANIZING
MOLLY ROGERS, HOUSING DEVELOPMENT CENTER
RYAN ROSER, MULTNOMAH COUNTY RESIDENT
EMILY S. RYAN, MULTNOMAH COUNTY RESIDENT
NEISHA SAXENA, DISABILITY RIGHTS OREGON
LYNNE WALKER, EAST MULTNOMAH COUNTY RESIDENT
JENNY WEINSTEIN, PORTLAND STATE UNIVERSITY INSTITUTE ON AGING
BRUCE WHITING, KEY BANK COMMUNITY DEVELOPMENT BANKING

FAIR HOUSING TECHNICAL COMMITTEE

KATE ALLEN, PORTLAND HOUSING BUREAU
ROSE-ELLEN BAK, MULTNOMAH COUNTY
NICKOLE CHERON, DISABILITY COORDINATOR, OFFICE OF NEIGHBORHOOD INVOLVEMENT
CHRISTINA DEFFEBACH, METRO PLANNING AND DEVELOPMENT DEPARTMENT
LOUISE DIX, CITY OF GRESHAM
BETTY DOMINGUEZ, HOUSING AUTHORITY OF PORTLAND
MICHELE GILA, ROOTS REALTY
MOLOY GOOD, FAIR HOUSING COUNCIL OF OREGON
ART HENDRICKS, CITY OF PORTLAND
JENNIFER KALEZ, PORTLAND HOUSING BUREAU
UMA KRISHNAN, CITY OF PORTLAND BUREAU OF PLANNING & SUSTAINABILITY
SHELLEY MARCHESI, HOUSING AUTHORITY OF PORTLAND
KIM MCCARTY, PORTLAND HOUSING BUREAU
ANDY MILLER, PORTLAND HOUSING BUREAU
ANTOINETTE PIETKA, PORTLAND HOUSING BUREAU
NEISHA SAXENA, DISABILITY RIGHTS OREGON
BENJAMIN YEAGER, PORTLAND HOUSING BUREAU



2011 FAIR HOUSING PLAN

AN ANALYSIS OF IMPEDIMENTS TO FAIR HOUSING CHOICE AND THE STRATEGIES TO ADDRESS THEM

Contacts:

Kate Allen, (503) 823.3606, Kate.Allen@PortlandOregon.gov

Jennifer Kalez, (503) 823.3358, Jennifer.Kalez@PortlandOregon.gov

Kim McCarty, (503) 823.5312, Kim.McCarty@PortlandOregon.gov

www.portlandonline.com/phb



HAVE YOU OR SOMEONE YOU KNOW EXPERIENCED DISCRIMINATION IN HOUSING?

KNOW YOUR RIGHTS!

IF YOU FEEL YOU HAVE EXPERIENCED DISCRIMINATION IN THE HOUSING INDUSTRY, PLEASE CONTACT:

U.S. Department of Housing & Urban Development
Portland Field Office
400 SW 6th Avenue, Suite 700
Portland, OR 97204
(971) 222.2600
www.hud.gov/oregon

The Fair Housing Council of Oregon
506 SW 6th Avenue, Suite 1111
Portland, OR 97204
1.800.424.3247
www.fhco.org

Oregon Bureau of Labor and Industries
800 NE Oregon St., Suite 1045
Portland, OR 97232
(971) 673.0763
www.oregon.gov/boli



June 10, 2011

On behalf of the Consortium of the City of Portland, City of Gresham, and Multnomah County, we commit to be guided by the recommendations outlined in this *2011 Analysis of Impediments to Fair Housing Choice* report. When making funding, program, and policy decisions for housing throughout the county, we commit to taking every action possible to affirmatively further fair housing.

We thank the two advisory committees who helped develop this report, which included housing providers, housing stakeholders, community members, and Consortium staff. For several months, these two groups reviewed data sets, conducted interviews, and asked hard questions to identify actions and policies that restrict housing choice, including:

- Continued housing discrimination that leads to racial and economic segregation;
- Lack of understanding of Fair Housing Laws by housing consumers and providers;
- Areas throughout the county that have reduced access to opportunity;
- A shortage of affordable, accessible units, especially for people with disabilities, larger families, and households below 30% of Median Family Income;
- Local policies that have the effect of creating displacement and gentrification; and,
- Low-income and vulnerable populations with restricted ability to exercise housing choice.

The set of recommendations included in this report is extensive and thorough and includes funding fair housing education and enforcement, improving accessibility in housing, and empowering an advocacy group to keep fair housing issues front and center, among many others.

This first year, for Fiscal Year 2011-2012, the Consortium members will begin to take action to address these impediments, including:

- Funding the Fair Housing Council of Oregon to continue education and enforcement of Fair Housing Laws;
- Funding Legal Aid Services of Oregon to help fund legal services for those experiencing housing discrimination;
- Committing millions of dollars to develop and preserve affordable housing, and continuing supportive services in housing for those suffering from mental illness, addiction, and other health issues; and
- Continuing to partner and collaborate with organizations that provide services to members of protected classes, low-income households, and other vulnerable populations.

The Consortium will work over the next five years to successfully implement these recommendations to move the fair housing agenda forward.

Respectfully submitted,

Commissioner Nick Fish
City of Portland

Commissioner Deborah Kafoury
Multnomah County

Councilor David Widmark
City of Gresham

2011 ANALYSIS OF IMPEDIMENTS TO FAIR HOUSING

TABLE OF CONTENTS

I.	Introduction and Executive Summary of the Analysis	7
II.	Jurisdictional Background Data	19
	A. Demographic and Socioeconomic Characteristics	19
	B. Housing Characteristics and Market Analysis	39
III.	Evaluation of the Jurisdiction’s Fair Housing Status	71
	A. The Fair Housing Act & Local Anti-Discrimination Law	71
	B. Fair Housing Complaint Data	72
	C. Fair Housing Council of Oregon Audit Testing	78
	D. Conclusions	80
IV.	Identification of Impediments to Fair Housing Choice.....	81
	A. Discrimination in Housing	81
	i. Methods of Illegal Discrimination.....	81
	ii. Fair Housing Enforcement	82
	iii. Fair Housing Law Education.....	82
	iv. Screening/Different Terms & Conditions	83
	v. Minority Homeownership Gap	83
	B. Fair Housing Understanding	87
	i. Fair Housing Education	87
	ii. Homeownership Education	89
	iii. Service Provider Education	90
	C. Areas of Reduced Access to Opportunity	91
	i. Mapping and Planning for Community Opportunity.....	91
	ii. Housing + Employment + Transportation.....	92
	iii. Regional Partnerships	94
	iv. Increase Employment & Income to Increase Housing Choice.....	97
	D. Fair Housing Data.....	99
	i. Unavailable/Unreliable Data	99
	ii. City of Gresham/Multnomah County Data.....	100
	iii. Accessible Housing Stock Data	101
	E. Accessible, Affordable Housing Stock.....	103
	i. Unit Availability and Affordability.....	103
	ii. Accessible Housing.....	110
	iii. Visitability in Housing	112
	iv. Services and Housing	113
	v. Maintaining Housing Stock	113

F.	Unintended Gentrification through Policies	115
i.	Urban Renewal and Tax Increment Financing	115
ii.	Property Tax Policies.....	117
iii.	Zoning and Site Selection.....	119
iv.	Subsidized Housing	127
G.	Low-Income and Vulnerable Populations	135
i.	Poverty	135
ii.	Rent Assistance	137
iii.	People with Disabilities.....	137
iv.	Healthy Homes.....	138
v.	The Aging Population	138
vi.	Other Vulnerable Populations	139
V.	Fair Housing Programs and Activities in the Jurisdiction	141
VI.	Conclusions and Recommendations	143
VII.	Glossary	149

Appendices:

A.	Citizen Participation	A1
B.	Fair Housing Interviews	B1
C.	Fair Housing Complaint Raw Data	C1
D.	Fair Housing Council of Oregon 2010 Audit Testing Data.....	D1
E.	Section 8 Administration Plan.....	E1
F.	Home Forward Dashboard.....	F1
G.	Jurisdiction FY11-12 Certifications: Affirmatively Furthering Fair Housing.....	G1

2011 ANALYSIS OF IMPEDIMENTS TO FAIR HOUSING

LIST OF CHARTS, TABLES, AND MAPS

PAGE

Chart 1: Age Distribution of Persons in Multnomah County, 2005-2009	20
Chart 2: Percentage of Persons with a Disability, Multnomah County 2005-2009	21
Chart 3: Ethnic Composition of Multnomah County, 2010: Hispanic and White non-Hispanic	23
Chart 4: Racial Composition of Multnomah County, 2010	23
Chart 5: Types of Households in Multnomah County, 2005-2009	30
Chart 6: Geographic Mobility of Residents in Multnomah County, 2005-2009	31
Chart 7: Educational Attainment of People in Multnomah County, 2005-2009	32
Chart 8: Poverty Rates in Multnomah County, 2005-2009.....	38
Chart 9: Types of Housing Units in Multnomah County, 2005-2009	39
Chart 10: Occupants with Housing Cost Burden in Multnomah County, 2005-2009	40
Chart 11: Urban Renewal Area Ethnicity, City of Portland 2009	57
Chart 12: Housing Problems by Race and County	60
Chart 13: Loans Originated for Home Purchase by Race & Ethnicity	84
Chart 14: Multnomah County Homeownership Rates 2005-2009	85
Chart 15 : Income Comparison between Whites and Communities of Color in Multnomah County	108
Table 1: Population Growth 2000-2009, Multnomah County	20
Table 2: Multnomah County and Jurisdictions: Population by Race and Ethnicity, 2010	22
Table 3: Multnomah County Jurisdictions: Population Percentages by Race and Ethnicity, 2010	22
Table 4: Median Family Income by Household Size, Portland Metro Area, 2010	34
Table 5: Most Common Occupations in Multnomah County, 2005-2009	35
Table 6: Types of Wages and Salaries for Multnomah County Workers, 2005-2009	35
Table 7: Median Rent and Sales Prices in Portland, 2009	40
Table 8: Affordable Housing in Portland Metropolitan Area	42
Table 9: Income Distribution of Households, Multnomah County, 2009	43
Table 10: Comparison of Renter Households and Availability of Units, Multnomah County, 2000	43
Table 11: Statewide Deficit of Affordable and Available Rental Units (2009)	44
Table 12: Home Purchase Loans by Subprime Lenders by Race and Hispanic Status	47
Table 13: Home Refinancing Loans by Subprime Lenders by Race and Hispanic Status.....	47
Table 14: Housing Needs in Multnomah County Based on 2009 CHAS DATA	58-59
Table 15: Income Needed to Afford Fair Market Rent (FMR), 2010	63
Table 16: Estimated Housing Wage Needed to Afford Fair Market Rent (FMR), 2010	63
Table 17: SSI Monthly Benefit Compared to One-Bedroom Fair Market Rent Cost	67
Table 18: Fair Housing Complaints: HUD & BOLI	72-74
Table 19: Fair Housing Complaints Disability Rights Oregon.....	75
Table 20: Fair Housing Complaints: FHCO and LASO	76-77
Table 21: Fair Housing Council of Oregon Audit Testing Data – City of Portland, 2010.....	79
Table 22: High-Cost Home Purchase Loans by Race and Hispanic Status	85
Table 23: Household Language by Linguistic Isolation	88
Table 24: FHCO Complaint Data Totals by Geographic Area and Fiscal Year	100
Table 25: Multnomah County Housing Cost per Month: Fair Market Rent (FMR) Values	103
Table 26: 2010 Affordable Monthly Housing Cost by MFI and Family Size	103
Table 27: Comparison of Renter Households and Availability of Units, Multnomah County	107

Table 28: SSI Monthly Benefit Compared to One-Bedroom Fair Market Rent Cost, Multnomah County	136
Table 29: Identified Impediments and Recommendations	143-148
Map 1: Racial Minority Population Change by Census Tract in Multnomah County, 2000-2010	25
Map 2 : Concentrations of Hispanic Americans in Multnomah County, 2010	26
Map 3 : Concentrations of Asian Americans in Multnomah County, 2010	27
Map 4 : Concentrations of Native Americans in Multnomah County, 2010	28
Map 5: Concentrations of African Americans in Multnomah County, 2010	29
Map 6: Portland Area High School Attendance Areas by Graduation Rate, 2009-2010	31
Map 7: Median Income by Census Tract, Multnomah County 2005-2009	36
Map 8: Multi-Family Housing, Reported EPA Sites, and Low-Income Census Tracts.....	37
Map 9: Housing Affordability for a One-Person Household at 60% MFI	41
Map 10: Multnomah County Low and Moderate Income Census Block Groups	45
Map 11: Real Estate Owned Properties in Multnomah County, 2010	49
Map 12: Housing Plus Transportation Costs	51
Map 13: Multnomah County Minority Populations by Census Tract, 2005-2009	52
Map 14: Home Forward (Housing Authority of Portland) Section 8 Concentrations	55
Map 15: High Poverty Census Tracts in Multnomah County, 2010	64
Map 16: Occupied Housing Units with Three or More Bedrooms	69
Map 17: Occupied Units with More than One Person per Bedroom	70
Map 18: PHB Funded Multi-Family Housing, Racial Minorities, and Reported EPA Sites	92
Map 19: Bureau of Planning 20-Minute Neighborhood Analysis	95
Map 20: Gresham Community Plan Map, 2010	96
Map 21: Gateway Regional Center Map	97
Map 22: Average Percent of Income Committed to Housing & Transportation, 2005	104
Map 23 : Affordable Housing Units in Multnomah County, 2007	105
Map 24: Occupied Housing Units with 3 or More Bedrooms, Multnomah County	106
Map 25: Minority Population Concentrations in Multnomah County	109
Map 26 : Racial Minority Population in 2000	116
Map 27 : Racial Minority Population in 2010	117
Map 28: New Transit-Oriented Development Program Area Boundaries	118
Map 29 : Portland Public School Grant High School Re-Design	122
Map 30: 2011 Catchment Enrollment Area for Grant High School	123
Map 31: Zoning for the catchment area of Grant High School in Portland	124
Map 32: Portland High School Attendance Areas by Graduation Rates	125
Map 33: Multnomah County Median Income by Census Tract, 2005-2009	126
Map 34: Home Forward (Housing Authority of Portland) Section 8 Concentrations – Zip Code	130
Map 35: Home Forward (Housing Authority of Portland) Section 8 Concentrations – Census Tract	131
Map 36: Home Forward (Housing Authority of Portland) Section 8 Elderly/Disabled Households	132
Map 37: Portland Plan 20 Minute Neighborhoods	133