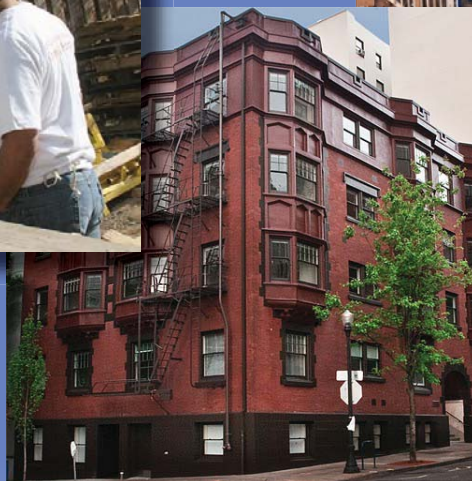


CITY OF PORTLAND - CITY OF GRESHAM - MULTNOMAH COUNTY

# FAIR HOUSING PLAN

2011

An Analysis of Impediments to Fair Housing Choice  
and the Strategies to Address Them



## **ACKNOWLEDGEMENTS**

### **FAIR HOUSING ADVISORY COMMITTEE**

ELISA AGUILERA, COMMUNITY ALLIANCE OF TENANTS  
DONNA CHILDS, ELDERS IN ACTION  
ANDREW COLAS, COLAS CONSTRUCTION, INC.  
ALYSSA CUDMORE, FAIR HOUSING COUNCIL OF OREGON  
JEANNE DAVIDSON, PORTLAND YOUTH & ELDERS COUNCIL  
DONITA FRY, PORTLAND YOUTH AND ELDERS COUNCIL, NAYA FAMILY CENTER  
MOLOY GOOD, FAIR HOUSING COUNCIL OF OREGON  
CASHAUNA HILL, OREGON LAW CENTER  
DEBORAH IMSE, METRO MULTI-FAMILY HOUSING ASSOCIATION  
LIV JENSSEN, MULTNOMAH COUNTY DEPT. OF COMMUNITY JUSTICE  
ETHAN KROW, CENTER FOR INTERCULTURAL ORGANIZING  
WALTER LANDER, PROVIDENCE HOSPITAL  
CHRISTINE LAU, ASIAN HEALTH & SERVICE CENTER  
BEN LOFTIS, PORTLAND COMMUNITY REINVESTMENT INITIATIVES, INC.  
PHIL OWEN, RENTAL HOUSING ASSOCIATION OF GREATER PORTLAND  
ANDREW RILEY, CENTER FOR INTERCULTURAL ORGANIZING  
MOLLY ROGERS, HOUSING DEVELOPMENT CENTER  
RYAN ROSER, MULTNOMAH COUNTY RESIDENT  
EMILY S. RYAN, MULTNOMAH COUNTY RESIDENT  
NEISHA SAXENA, DISABILITY RIGHTS OREGON  
LYNNE WALKER, EAST MULTNOMAH COUNTY RESIDENT  
JENNY WEINSTEIN, PORTLAND STATE UNIVERSITY INSTITUTE ON AGING  
BRUCE WHITING, KEY BANK COMMUNITY DEVELOPMENT BANKING

### **FAIR HOUSING TECHNICAL COMMITTEE**

KATE ALLEN, PORTLAND HOUSING BUREAU  
ROSE-ELLEN BAK, MULTNOMAH COUNTY  
NICKOLE CHERON, DISABILITY COORDINATOR, OFFICE OF NEIGHBORHOOD INVOLVEMENT  
CHRISTINA DEFFEBACH, METRO PLANNING AND DEVELOPMENT DEPARTMENT  
LOUISE DIX, CITY OF GRESHAM  
BETTY DOMINGUEZ, HOUSING AUTHORITY OF PORTLAND  
MICHELE GILA, ROOTS REALTY  
MOLOY GOOD, FAIR HOUSING COUNCIL OF OREGON  
ART HENDRICKS, CITY OF PORTLAND  
JENNIFER KALEZ, PORTLAND HOUSING BUREAU  
UMA KRISHNAN, CITY OF PORTLAND BUREAU OF PLANNING & SUSTAINABILITY  
SHELLEY MARCHESI, HOUSING AUTHORITY OF PORTLAND  
KIM MCCARTY, PORTLAND HOUSING BUREAU  
ANDY MILLER, PORTLAND HOUSING BUREAU  
ANTOINETTE PIETKA, PORTLAND HOUSING BUREAU  
NEISHA SAXENA, DISABILITY RIGHTS OREGON  
BENJAMIN YEAGER, PORTLAND HOUSING BUREAU



# 2011 FAIR HOUSING PLAN

---

## AN ANALYSIS OF IMPEDIMENTS TO FAIR HOUSING CHOICE AND THE STRATEGIES TO ADDRESS THEM

### **Contacts:**

*Kate Allen, (503) 823.3606, [Kate.Allen@PortlandOregon.gov](mailto:Kate.Allen@PortlandOregon.gov)*

*Jennifer Kalez, (503) 823.3358, [Jennifer.Kalez@PortlandOregon.gov](mailto:Jennifer.Kalez@PortlandOregon.gov)*

*Kim McCarty, (503) 823.5312, [Kim.McCarty@PortlandOregon.gov](mailto:Kim.McCarty@PortlandOregon.gov)*

[www.portlandonline.com/phb](http://www.portlandonline.com/phb)



**HAVE YOU OR SOMEONE YOU KNOW EXPERIENCED DISCRIMINATION IN HOUSING?**

## ***KNOW YOUR RIGHTS!***

**IF YOU FEEL YOU HAVE EXPERIENCED DISCRIMINATION IN THE HOUSING INDUSTRY, PLEASE CONTACT:**

U.S. Department of Housing & Urban Development  
Portland Field Office  
400 SW 6<sup>th</sup> Avenue, Suite 700  
Portland, OR 97204  
(971) 222.2600  
[www.hud.gov/oregon](http://www.hud.gov/oregon)

The Fair Housing Council of Oregon  
506 SW 6<sup>th</sup> Avenue, Suite 1111  
Portland, OR 97204  
1.800.424.3247  
[www.fhco.org](http://www.fhco.org)

Oregon Bureau of Labor and Industries  
800 NE Oregon St., Suite 1045  
Portland, OR 97232  
(971) 673.0763  
[www.oregon.gov/boli](http://www.oregon.gov/boli)



May 16, 2011

On behalf of the Consortium of the City of Portland, City of Gresham, and Multnomah County, we commit to be guided by the recommendations outlined in this *2011 Analysis of Impediments to Fair Housing Choice* report. When making funding, program, and policy decisions for housing throughout the county, we commit to taking every action possible to affirmatively further fair housing.

We thank the two advisory committees who helped develop this report, which included housing providers, housing stakeholders, community members, and Consortium staff. For several months, these two groups reviewed data sets, conducted interviews, and asked hard questions to identify actions and policies that restrict housing choice, including:

- Continued housing discrimination that leads to racial and economic segregation;
- Lack of understanding of Fair Housing Laws by housing consumers and providers;
- Areas throughout the county that have reduced access to opportunity;
- A shortage of affordable, accessible units, especially for people with disabilities, larger families, and households below 30% of Median Family Income;
- Local policies that have the effect of creating displacement and gentrification; and,
- Low-income and vulnerable populations with restricted ability to exercise housing choice.

The set of recommendations included in this report is extensive and thorough and includes funding fair housing education and enforcement, improving accessibility in housing, and empowering an advocacy group to keep fair housing issues front and center, among many others.

This first year, for Fiscal Year 2011-2012, the Consortium members will begin to take action to address these impediments, including:

- Funding the Fair Housing Council of Oregon to continue education and enforcement of Fair Housing Laws;
- Funding Legal Aid Services of Oregon to help fund legal services for those experiencing housing discrimination;
- Committing millions of dollars to develop and preserve affordable housing, and continuing supportive services in housing for those suffering from mental illness, addiction, and other health issues; and
- Continuing to partner and collaborate with organizations that provide services to members of protected classes, low-income households, and other vulnerable populations.

The Consortium will work over the next five years to successfully implement these recommendations to move the fair housing agenda forward.

Respectfully submitted,

Commissioner Nick Fish  
City of Portland

Commissioner Deborah Kafoury  
Multnomah County

Councilor David Widmark  
City of Gresham



# 2011 ANALYSIS OF IMPEDIMENTS TO FAIR HOUSING

## TABLE OF CONTENTS

---

I.	Introduction and Executive Summary of the Analysis .....	7
II.	Jurisdictional Background Data .....	19
	A. Demographic and Socioeconomic Characteristics .....	19
	B. Housing Characteristics and Market Analysis .....	39
III.	Evaluation of the Jurisdiction’s Fair Housing Status .....	71
	A. The Fair Housing Act & Local Anti-Discrimination Law .....	71
	B. Fair Housing Complaint Data .....	72
	C. Fair Housing Council of Oregon Audit Testing .....	78
	D. Conclusions .....	80
IV.	Identification of Impediments to Fair Housing Choice.....	81
	A. Discrimination in Housing .....	81
	i. Methods of Illegal Discrimination.....	81
	ii. Fair Housing Enforcement .....	82
	iii. Fair Housing Law Education.....	82
	iv. Screening/Different Terms & Conditions .....	83
	v. Minority Homeownership Gap .....	83
	B. Fair Housing Understanding .....	87
	i. Fair Housing Education .....	87
	ii. Homeownership Education .....	89
	iii. Service Provider Education .....	90
	C. Areas of Reduced Access to Opportunity .....	91
	i. Mapping and Planning for Community Opportunity.....	91
	ii. Housing + Employment + Transportation.....	92
	iii. Regional Partnerships .....	94
	iv. Increase Employment & Income to Increase Housing Choice.....	97
	D. Fair Housing Data.....	99
	i. Unavailable/Unreliable Data .....	99
	ii. City of Gresham/Multnomah County Data.....	100
	iii. Accessible Housing Stock Data .....	101
	E. Accessible, Affordable Housing Stock.....	103
	i. Unit Availability and Affordability.....	103
	ii. Accessible Housing.....	110
	iii. Visitability in Housing .....	112
	iv. Services and Housing .....	113
	v. Maintaining Housing Stock .....	113

F.	Unintended Gentrification through Policies .....	115
i.	Urban Renewal and Tax Increment Financing .....	115
ii.	Property Tax Policies.....	117
iii.	Zoning and Site Selection.....	119
iv.	Subsidized Housing .....	127
G.	Low-Income and Vulnerable Populations .....	135
i.	Poverty .....	135
ii.	Rent Assistance .....	137
iii.	People with Disabilities.....	137
iv.	Healthy Homes.....	138
v.	The Aging Population .....	138
vi.	Other Vulnerable Populations .....	139
V.	Fair Housing Programs and Activities in the Jurisdiction .....	141
VI.	Conclusions and Recommendations .....	143
VII.	Glossary .....	149

Appendices:

A.	Citizen Participation .....	A1
B.	Fair Housing Interviews .....	B1
C.	Fair Housing Complaint Raw Data .....	C1
D.	Fair Housing Council of Oregon 2010 Audit Testing Data.....	D1
E.	Section 8 Administration Plan.....	E1
F.	Home Forward Dashboard.....	F1
G.	Jurisdiction FY11-12 Certifications: Affirmatively Furthering Fair Housing.....	G1



**2011 ANALYSIS OF IMPEDIMENTS TO FAIR HOUSING**

**LIST OF CHARTS, TABLES, AND MAPS**

**PAGE**

---

Chart 1: Age Distribution of Persons in Multnomah County, 2005-2009 .....	20
Chart 2: Percentage of Persons with a Disability, Multnomah County 2005-2009 .....	21
Chart 3: Ethnic Composition of Multnomah County, 2010: Hispanic and White non-Hispanic .....	23
Chart 4: Racial Composition of Multnomah County, 2010 .....	23
Chart 5: Types of Households in Multnomah County, 2005-2009 .....	30
Chart 6: Geographic Mobility of Residents in Multnomah County, 2005-2009 .....	31
Chart 7: Educational Attainment of People in Multnomah County, 2005-2009 .....	32
Chart 8: Poverty Rates in Multnomah County, 2005-2009.....	38
Chart 9: Types of Housing Units in Multnomah County, 2005-2009 .....	39
Chart 10: Occupants with Housing Cost Burden in Multnomah County, 2005-2009 .....	40
Chart 11: Urban Renewal Area Ethnicity, City of Portland 2009 .....	57
Chart 12: Housing Problems by Race and County .....	60
Chart 13: Loans Originated for Home Purchase by Race & Ethnicity .....	84
Chart 14: Multnomah County Homeownership Rates 2005-2009 .....	85
Chart 15 : Income Comparison between Whites and Communities of Color in Multnomah County .....	108
Table 1: Population Growth 2000-2009, Multnomah County .....	20
Table 2: Multnomah County and Jurisdictions: Population by Race and Ethnicity, 2010 .....	22
Table 3: Multnomah County Jurisdictions: Population Percentages by Race and Ethnicity, 2010 .....	22
Table 4: Median Family Income by Household Size, Portland Metro Area, 2010 .....	34
Table 5: Most Common Occupations in Multnomah County, 2005-2009 .....	35
Table 6: Types of Wages and Salaries for Multnomah County Workers, 2005-2009 .....	35
Table 7: Median Rent and Sales Prices in Portland, 2009 .....	40
Table 8: Affordable Housing in Portland Metropolitan Area .....	42
Table 9: Income Distribution of Households, Multnomah County, 2009 .....	43
Table 10: Comparison of Renter Households and Availability of Units, Multnomah County, 2000 .....	43
Table 11: Statewide Deficit of Affordable and Available Rental Units (2009) .....	44
Table 12: Home Purchase Loans by Subprime Lenders by Race and Hispanic Status .....	47
Table 13: Home Refinancing Loans by Subprime Lenders by Race and Hispanic Status.....	47
Table 14: Housing Needs in Multnomah County Based on 2009 CHAS DATA .....	58-59
Table 15: Income Needed to Afford Fair Market Rent (FMR), 2010 .....	63
Table 16: Estimated Housing Wage Needed to Afford Fair Market Rent (FMR), 2010 .....	63
Table 17: SSI Monthly Benefit Compared to One-Bedroom Fair Market Rent Cost .....	67
Table 18: Fair Housing Complaints: HUD & BOLI .....	72-74
Table 19: Fair Housing Complaints Disability Rights Oregon.....	75
Table 20: Fair Housing Complaints: FHCO and LASO .....	76-77
Table 21: Fair Housing Council of Oregon Audit Testing Data – City of Portland, 2010.....	79
Table 22: High-Cost Home Purchase Loans by Race and Hispanic Status .....	85
Table 23: Household Language by Linguistic Isolation .....	88
Table 24: FHCO Complaint Data Totals by Geographic Area and Fiscal Year .....	100
Table 25: Multnomah County Housing Cost per Month: Fair Market Rent (FMR) Values .....	103
Table 26: 2010 Affordable Monthly Housing Cost by MFI and Family Size .....	103
Table 27: Comparison of Renter Households and Availability of Units, Multnomah County .....	107

---

Table 28: SSI Monthly Benefit Compared to One-Bedroom Fair Market Rent Cost, Multnomah County .....	136
Table 29: Identified Impediments and Recommendations .....	143-148
Map 1: Racial Minority Population Change by Census Tract in Multnomah County, 2000-2010 .....	25
Map 2 : Concentrations of Hispanic Americans in Multnomah County, 2010 .....	26
Map 3 : Concentrations of Asian Americans in Multnomah County, 2010 .....	27
Map 4 : Concentrations of Native Americans in Multnomah County, 2010 .....	28
Map 5: Concentrations of African Americans in Multnomah County, 2010 .....	29
Map 6: Portland Area High School Attendance Areas by Graduation Rate, 2009-2010 .....	31
Map 7: Median Income by Census Tract, Multnomah County 2005-2009 .....	36
Map 8: Multi-Family Housing, Reported EPA Sites, and Low-Income Census Tracts.....	37
Map 9: Housing Affordability for a One-Person Household at 60% MFI .....	41
Map 10: Multnomah County Low and Moderate Income Census Block Groups .....	45
Map 11: Real Estate Owned Properties in Multnomah County, 2010 .....	49
Map 12: Housing Plus Transportation Costs .....	51
Map 13: Multnomah County Minority Populations by Census Tract, 2005-2009 .....	52
Map 14: Home Forward (Housing Authority of Portland) Section 8 Concentrations .....	55
Map 15: High Poverty Census Tracts in Multnomah County, 2010 .....	64
Map 16: Occupied Housing Units with Three or More Bedrooms .....	69
Map 17: Occupied Units with More than One Person per Bedroom .....	70
Map 18: PHB Funded Multi-Family Housing, Racial Minorities, and Reported EPA Sites .....	92
Map 19: Bureau of Planning 20-Minute Neighborhood Analysis .....	95
Map 20: Gresham Community Plan Map, 2010 .....	96
Map 21: Gateway Regional Center Map .....	97
Map 22: Average Percent of Income Committed to Housing & Transportation, 2005 .....	104
Map 23 : Affordable Housing Units in Multnomah County, 2007 .....	105
Map 24: Occupied Housing Units with 3 or More Bedrooms, Multnomah County .....	106
Map 25: Minority Population Concentrations in Multnomah County .....	109
Map 26 : Racial Minority Population in 2000 .....	116
Map 27 : Racial Minority Population in 2010 .....	117
Map 28: New Transit-Oriented Development Program Area Boundaries .....	118
Map 29 : Portland Public School Grant High School Re-Design .....	122
Map 30: 2011 Catchment Enrollment Area for Grant High School .....	123
Map 31: Zoning for the catchment area of Grant High School in Portland .....	124
Map 32: Portland High School Attendance Areas by Graduation Rates .....	125
Map 33: Multnomah County Median Income by Census Tract, 2005-2009 .....	126
Map 34: Home Forward (Housing Authority of Portland) Section 8 Concentrations – Zip Code .....	130
Map 35: Home Forward (Housing Authority of Portland) Section 8 Concentrations – Census Tract .....	131
Map 36: Home Forward (Housing Authority of Portland) Section 8 Elderly/Disabled Households .....	132
Map 37: Portland Plan 20 Minute Neighborhoods .....	133