



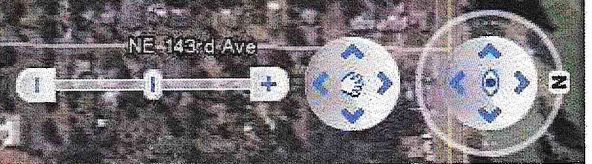
Image Date: Aug 15, 2010

45°31'13.34" N 122°31'57.18" W elev 310 ft

©2010 Europa Technologies
©2010 Google

©2010 Google

Eye alt: 8361 ft





0 20'

>

CD > 1M sin

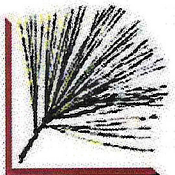
0 00

(13 <

CD m

3 3 3

171' 1/4"

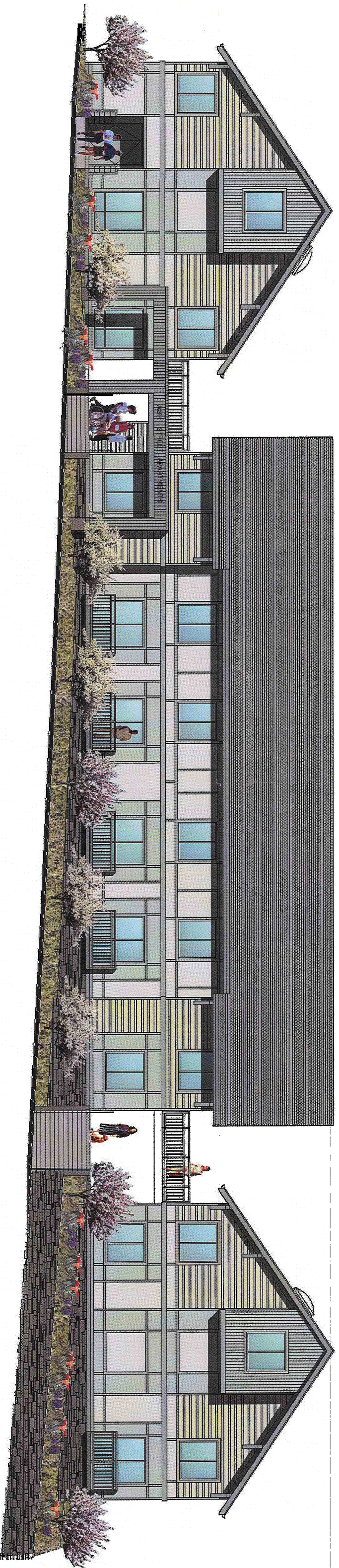


Jivanjee Circosta Architecture, LLP

Architecture • Planning • Urban Design

9055 SW Beaverton-Hillsdale Hwy., Portland, OR 97225

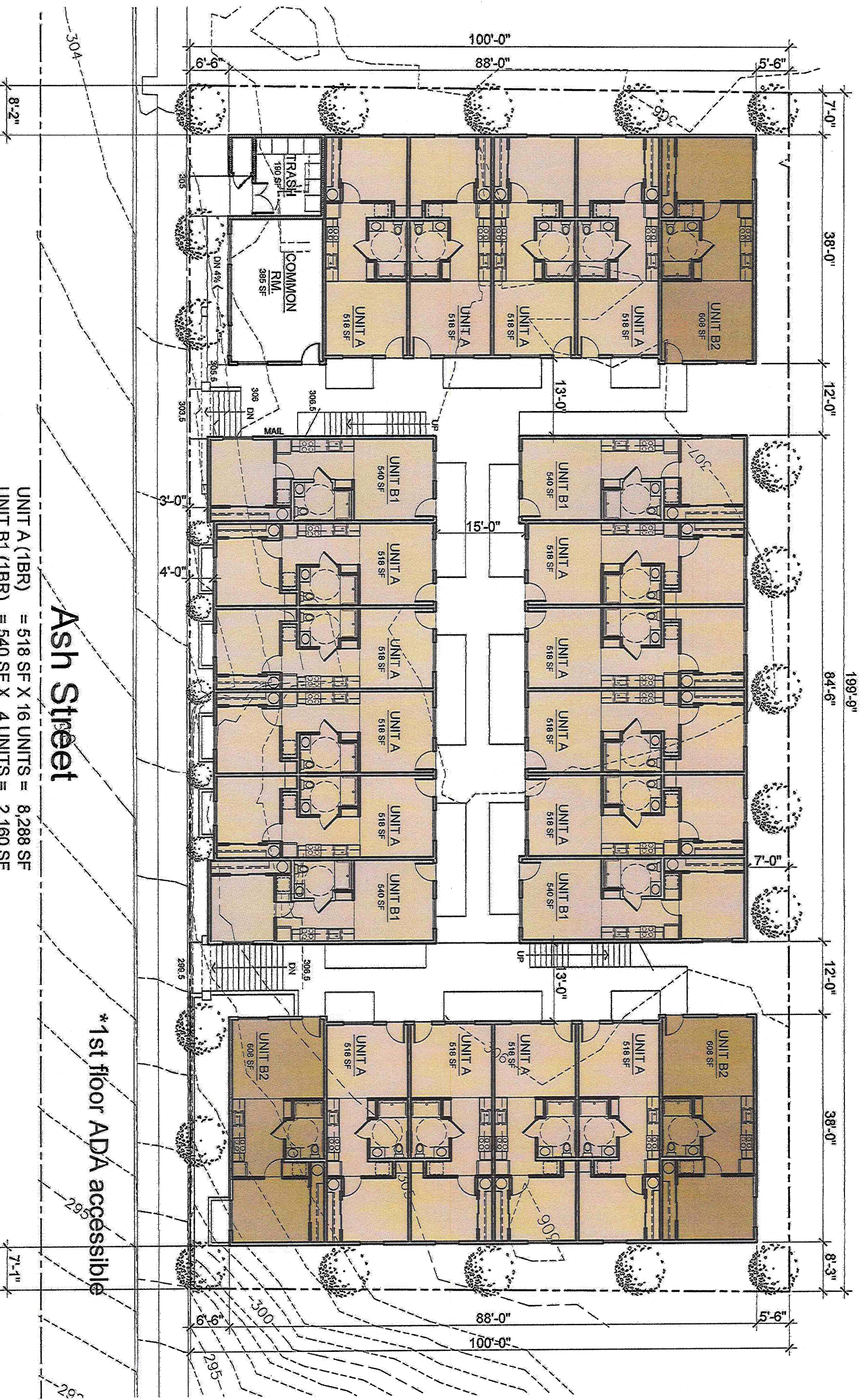
503-297-5160



**ASH STREET
APARTMENTS**



Jvanjee Circosta Architecture, LLP
Architecture • Planning • Urban Design
9035 SW Beaverton-Hillsdale Hwy, Portland, OR 97225 503-297-5160



FIRST FLOOR PLAN

Ash Street

Affordable Residential Community

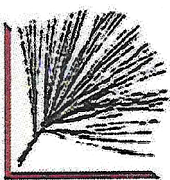
SCALE: 1/16" = 1'-0"

12/18/08

UNIT A (1BR)	= 518 SF X 16 UNITS =	8,288 SF
UNIT B1 (1BR)	= 540 SF X 4 UNITS =	2,160 SF
UNIT B2 (1BR)	= 608 SF X 3 UNITS =	1,824 SF
UNIT AL (2BR)	= 665 SF X 16 UNITS =	10,640 SF
UNIT B1L (2BR)	= 687 SF X 4 UNITS =	2,748 SF
UNIT B2L (2BR)	= 793 SF X 4 UNITS =	3,172 SF
COMMUNITY RM	= 301 SF X 1 UNIT =	301 SF
		47 UNITS = 29,133 SF

Ash Street

*1st floor ADA accessible

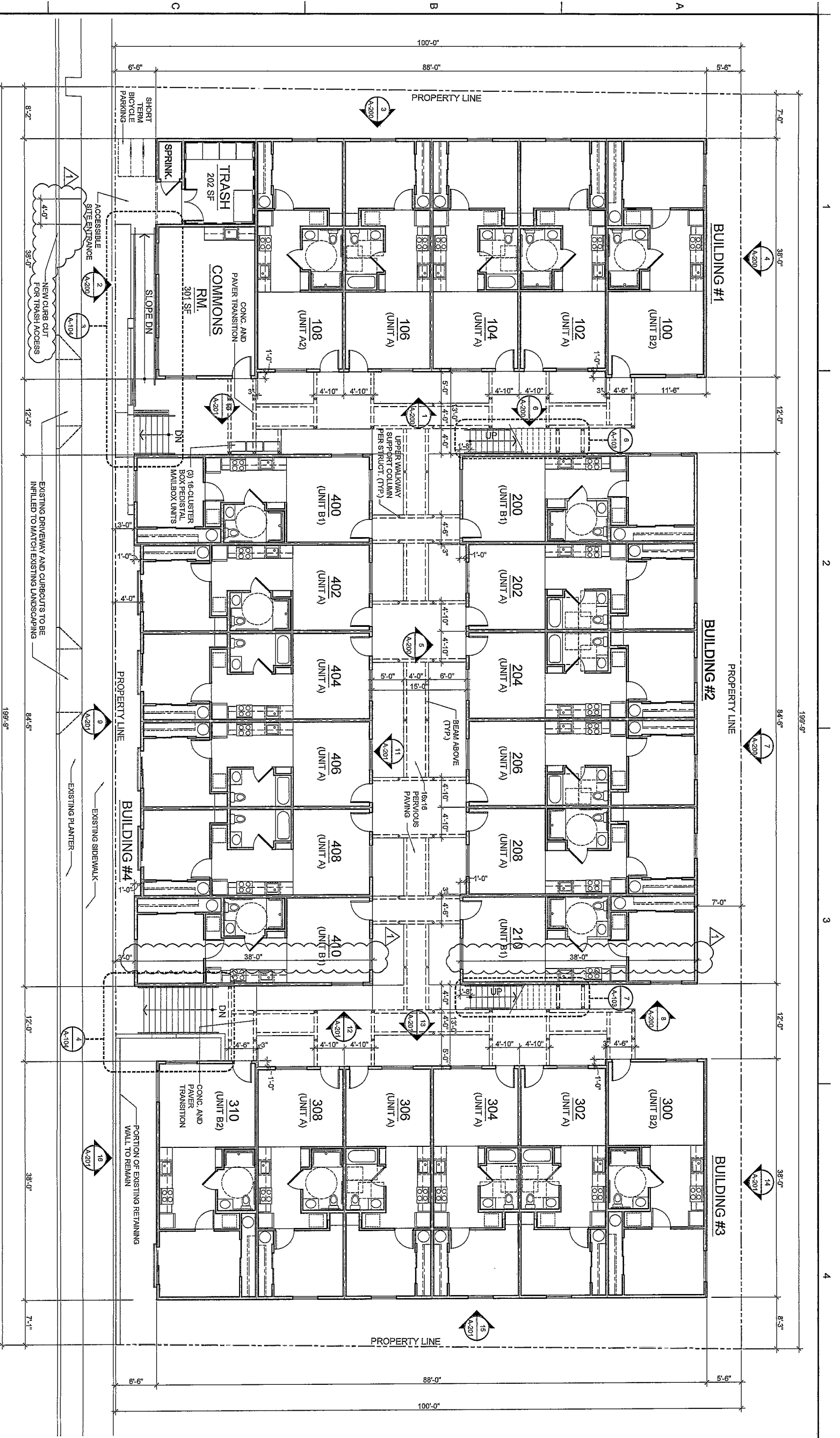


Jivanjee Circosta Architecture, LLP

Architecture • Planning • Urban Design

9035 SW Beaverton-Hillsdale Hwy., Portland, OR 97225

503-297-5166



S.E. ASH STREET

CENTERLINE OF ASH STREET

ARCHITECTURAL SITE PLAN
OVERALL 1ST FLOOR PLANS(S)



SCALE: 1/8" = 1'-0"

UNIT TYPE	PLAN LOCATION
UNIT A	1, 8, 21, A-10
UNIT B1	17, A-11
UNIT B2	17, A-12
UNIT FZ	17A-13
TRASH/COMMON	22A-119

GENERAL NOTES:
1. SEE FINISH SCHEDULES FOR FINISHED GRADES AND TOP OF SLAB ELEVATIONS.
2. SEE LANDSCAPE DRAWINGS FOR LANDSCAPE AND PAVEMENT REQUIREMENTS.
3. DIMENSION TO FACE OF STUDS OR EDGE OF WALKWAY UNO.

Jivanjee Cirocosta Architecture LLP
Architects • Planning • Urban Design

5005 SW Deschutes-Hilldale Hwy., Portland, OR 97225
Phone 503.297.5160 Fax 503.297.4633

REGISTERED ARCHITECT
DOUG C. CIROCOSTA
PORTLAND, OREGON
STATE OF OREGON

EXPIRES ON: 06-30-2009

ASH STREET APARTMENTS
12012 SE ASH STREET
PORTLAND, OREGON 97216

Client: **ASH STREET LLC**
7616 SE 20th AVE
PORTLAND, OR 97202

Project: **ASH STREET APARTMENTS**

Drawing Title: **SITE PLAN (FIRST FLOOR PLAN)**

PERMIT DRAWINGS
Project Number: **0874**
Date: **2/13/09**

Scale: 1/8" = 1'-0"
A-100

Sheet Revision: **C.O.P. PLAN REVIEW RESPONSE**
5/21/10

Copyright © 2009
All rights reserved. No part of this publication may be reproduced, stored in a retrieval system, or transmitted, in any form or by any means, electronic, mechanical, photocopying, recording, or by any information storage and retrieval system, without the prior written permission of the publisher.