



Portland Parks & Recreation Lents Park Master Plan

Public Involvement



Public Involvement

MAY 2010

Kick-off Meeting
PAC Meeting #1

JUNE 2010

O&M Meeting #1
Stakeholder Interviews
Structural Tour
Public Open House #1

JULY 2010

PAC Meeting #2 with Site Tour
Stakeholder Interviews

AUGUST 2010

O&M Meeting #2
PAC/ TAC Meeting #3
Public Open House #2

OCTOBER 2010

PAC/ TAC Meeting #4
PAC Meeting #4 Continuation and Follow-up
Listening Session #1 – Active Recreation
Listening Session #2 – Community Spaces
Listening Session #3 – Sustainability

NOVEMBER 2010

Public Open House #3

DECEMBER 2010

PAC Meeting #5
Draft Master Plan review by PAC

APRIL 2011

Council Presentation

Vision:

Lents Park is a signature park, celebrated for its wide variety of activities and users, and as an important community gathering place. The park's distinct areas are connected by a system of pathways, and there are many opportunities to enjoy the natural environment, gardens, and landscaping. People of all ages and backgrounds come to the park to relax, visit, attend neighborhood scale events, and use the sports fields and Walker Stadium in this safe, welcoming community gem.

Guiding Principles:

- Provide a variety of active and passive recreational opportunities
- Create good circulation systems and pathways into, and within the park
- Design the park to be economically*, environmentally and socially sustainable
- Improve maintenance, programming, and development of athletic facilities to optimize their use
- Honor the visual character of the park
- Improve access for all park users
- Enhance community and neighborhood integration with the park
- Create a welcoming environment
- Celebrate history, culture, architecture, and botanical features

** Economic sustainability is defined as a project that Portland Parks & Recreation can afford to build AND maintain.

Context



Existing Conditions



Master Plan



Existing Conditions

South











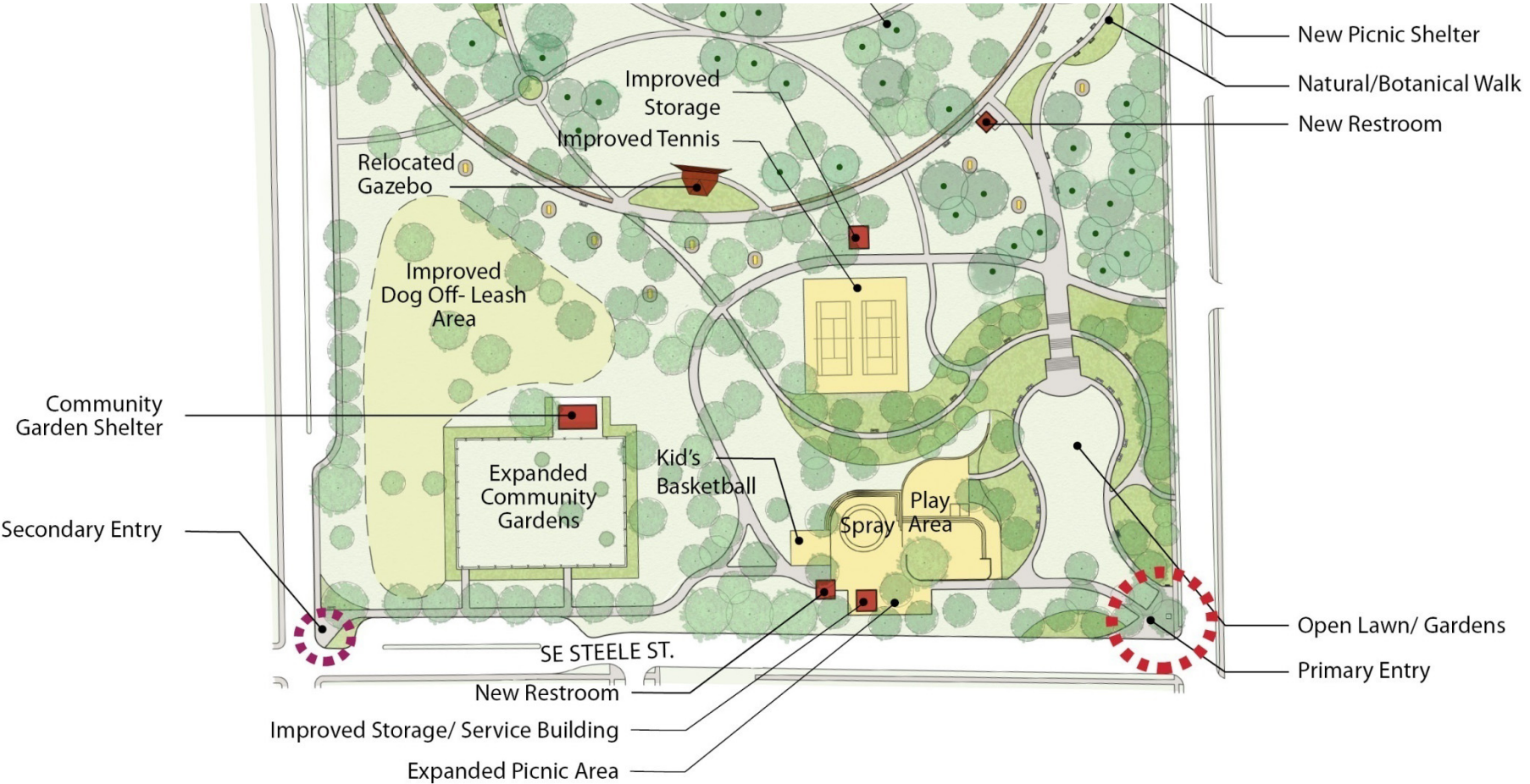
LENTS
COMMUNITY GARDEN
PORTLAND PARKS & RECREATION
503-823-1612

THE GARDEN
HOURS
10:00 AM - 5:00 PM
MONDAY - FRIDAY



Master Plan

South





MK







Existing Conditions

Middle





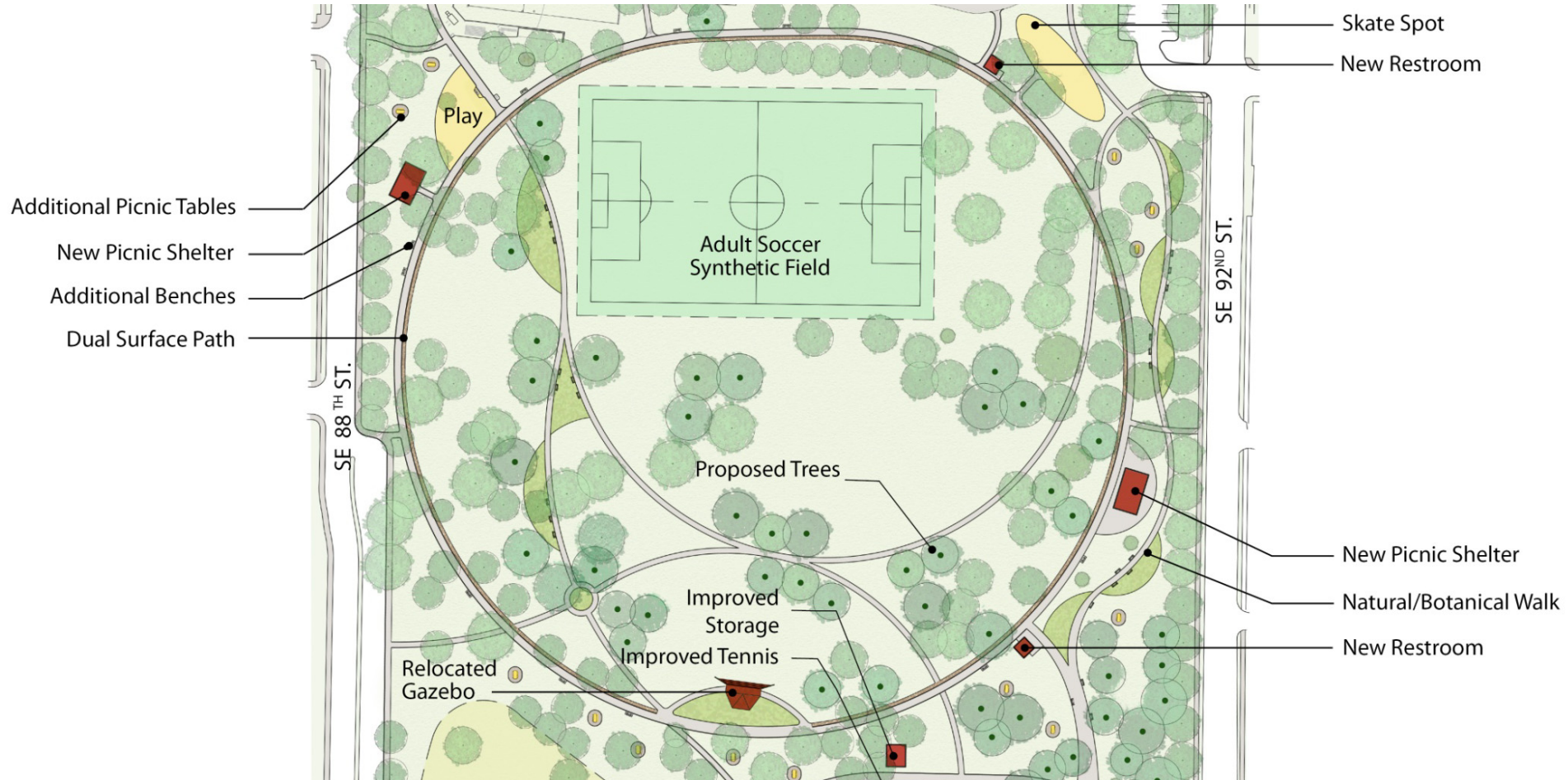






Master Plan

Middle











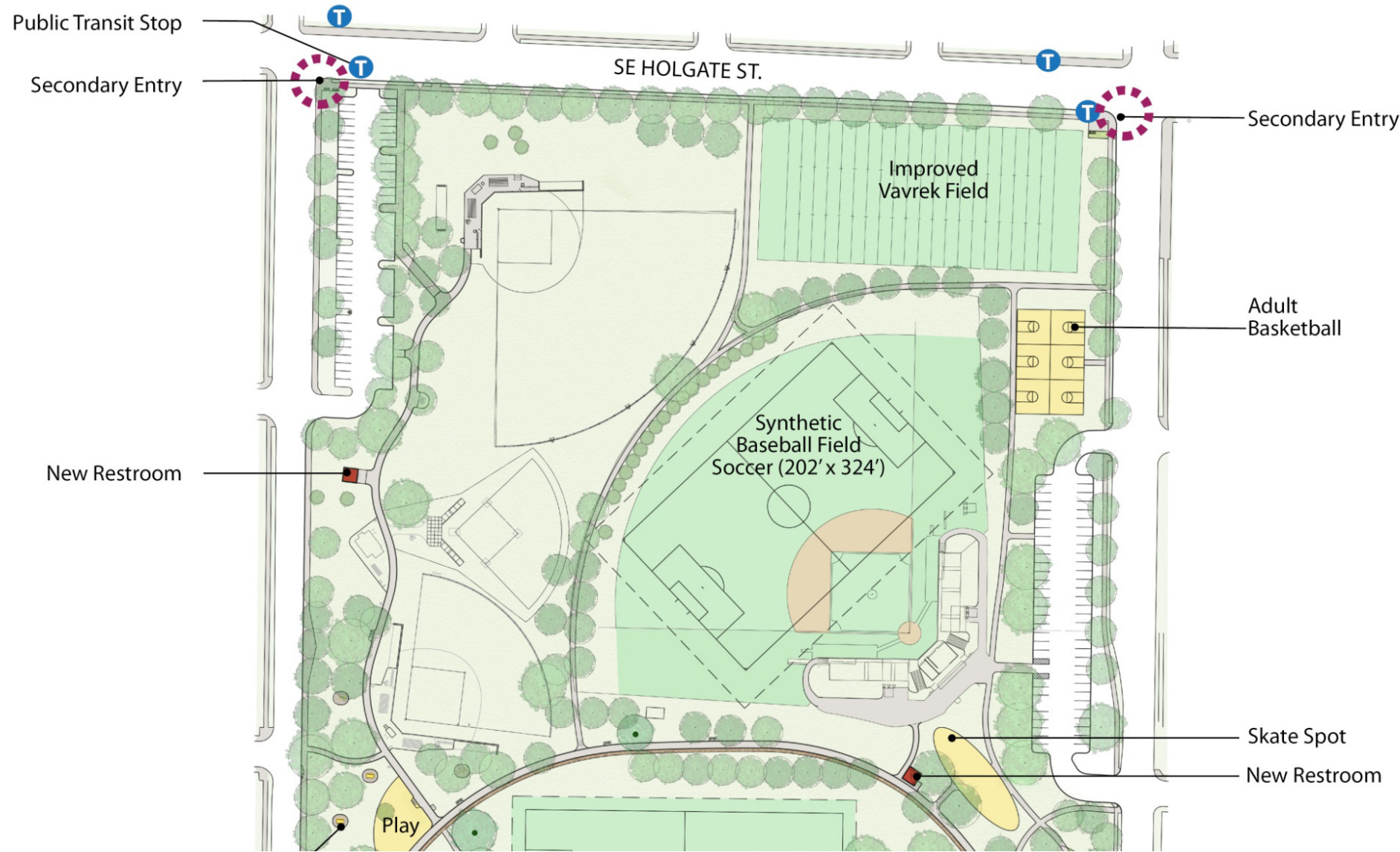
Existing Conditions

North



Final Master Plan

North















Master Plan





Portland Parks & Recreation Lents Park Master Plan