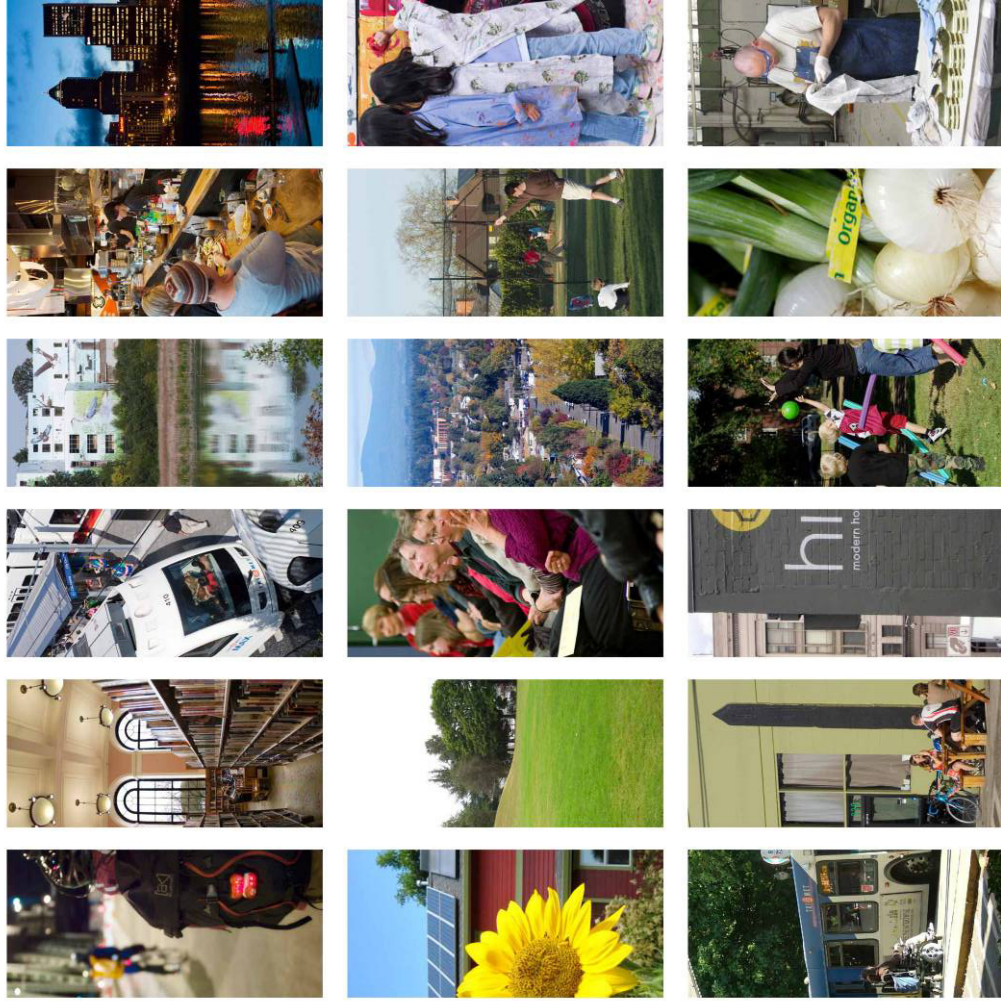


Central City 2035



Planning & Sustainability Commission Briefing

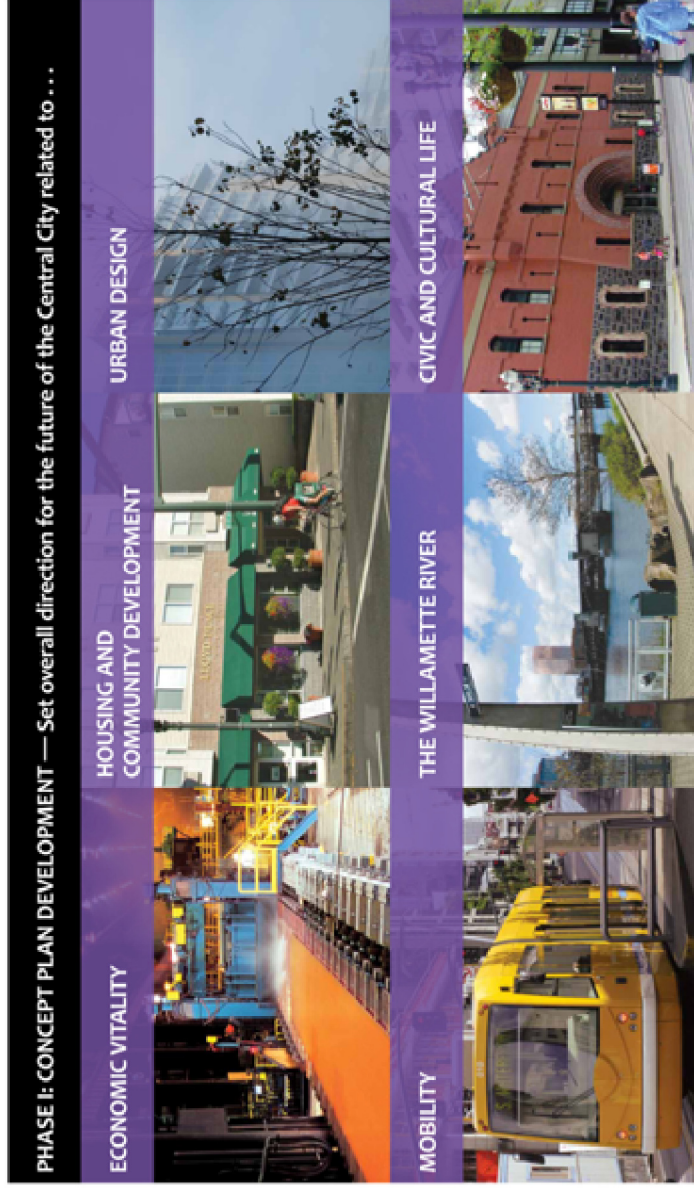
November 9, 2010

What is Central City 2035?



Portland's Central City is home to thriving urban neighborhoods and the core of the regional economy. It is a resource for the metro area with its concentration of jobs, innovative cultural and entertainment destinations, bustling retail districts, urban universities and direct access to the Willamette River.

It is important that we adequately plan for the continued success of the Central City. Central City 2035 (CC2035) is such a planning effort. As an update to the 1988 Central City Plan, CC2035 will address new challenges and opportunities to ensure a vibrant and sustainable Central City, now and in the future.

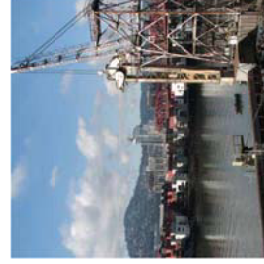


How is CC2035 planning for the Willamette River?



The River Plan is a comprehensive multi-objective plan for the Willamette riverfront. It is an update of the Willamette Greenway Plan, zoning code and design guidelines, which were last adopted in 1987. The River Plan is being planned in three distinct reaches. The River Plan/Central Reach will be conducted as part of CC2035 and will address the following topics:

- **RIVERFRONT VITALITY:** creating vibrant waterfront districts through good urban design and lively, interesting places.
- **PORTLAND'S FRONT YARD:** providing visual and physical access to the water and drawing people to the riverfront to play.
- **WATERSHED HEALTH:** improving conditions for fish, wildlife and people.



CENTRAL CITY 2035 AND CONNECTED PLANS

How does CC2035 connect with the Portland Plan?



CENTRAL CITY 2035

CC2035 and the Portland Plan are being created simultaneously, and while they have different purposes — one sets some high level goals for the entire city for the next 25 years; the other addresses the needs of a distinct and defined part of the city — they share a common vision and values. The work of both plans will be coordinated carefully so the CC2035 plan reflects and supports the policies of the overarching Portland Plan. CC2035 will be one of the first “action plans” for the Portland Plan, making real the policies, goals and objectives of the Portland Plan within the Central City.

WWW.PDXPLAN.COM

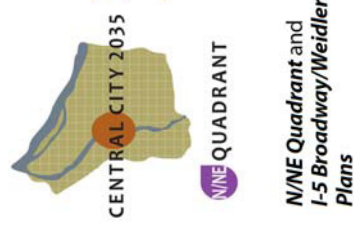
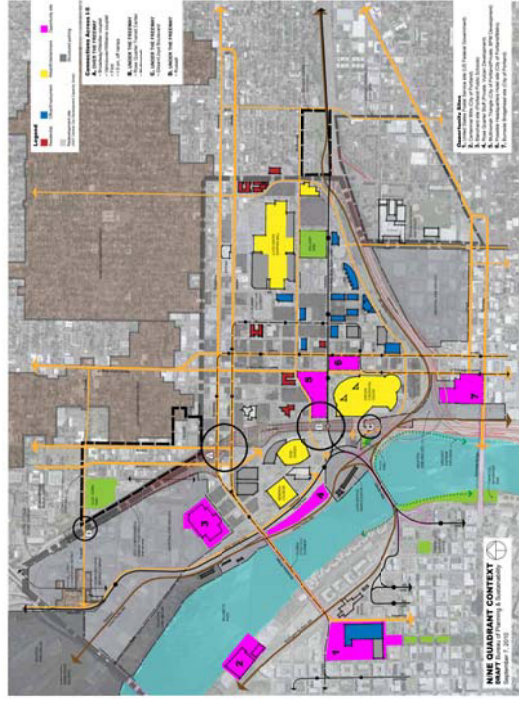
503-823-7700

PDXPLAN@PORTLANDOREGON.GOV



What's going on in the N/NE Quadrant?

The N/NE Quadrant and I-5 Broadway/Weidler Plans will act as a quadrant-level guide for implementation of city-wide goals to ensure a vibrant Central City at the heart of the metropolitan region. The project is a unique collaboration between the City of Portland and the Oregon Department of Transportation, to jointly develop a land use plan and plan for the I-5 Freeway in the vicinity of the Broadway/Weidler Interchange in a mutually beneficial way.



What's going on in the N/NE Quadrant?



Key Issues and Challenges

Land Use / Urban Design/ Livability

- Economic Prosperity
- Placemaking
- Zoning
- Public / Private Partnerships
- Development Opportunities
- Housing
- Sustainability
- Trails / Open Space

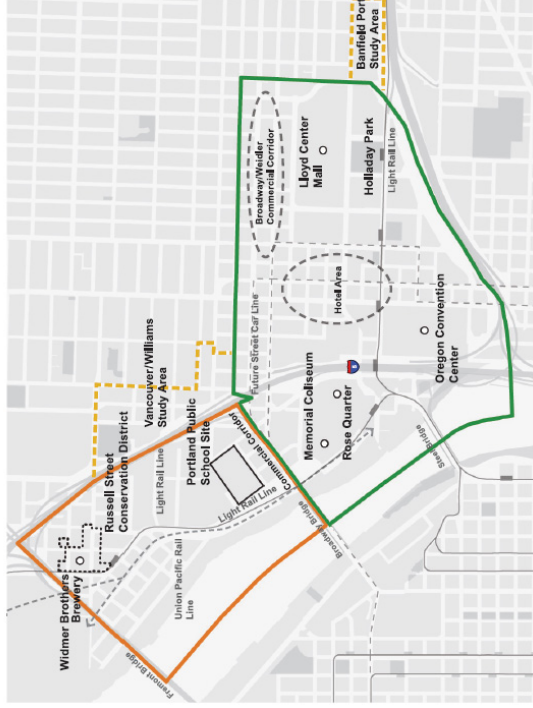
Freeway Transportation System

- Safety Issues
- Interchange Issues
- Bottleneck

Local Transportation System

- Transit
- Bicycle
- Pedestrian
- Trails
- Freight
- Automobile
- Demand Management

PROJECT TIMELINE						
September 2010	Fall 2010	Winter 2010	Spring 2011	Summer 2011	Fall 2011	Winter 2012
Project Start-up	Background and Existing Conditions	Issues, Opportunities and Constraints	Concept Alternative	Preferred Concept	Recommended Quadrant Plan and Freeway Concepts	Legislative Hearings and Adoption



City of Portland Bureau of Planning and Sustainability
Sam Adams, Mayor | Susan Anderson, Director

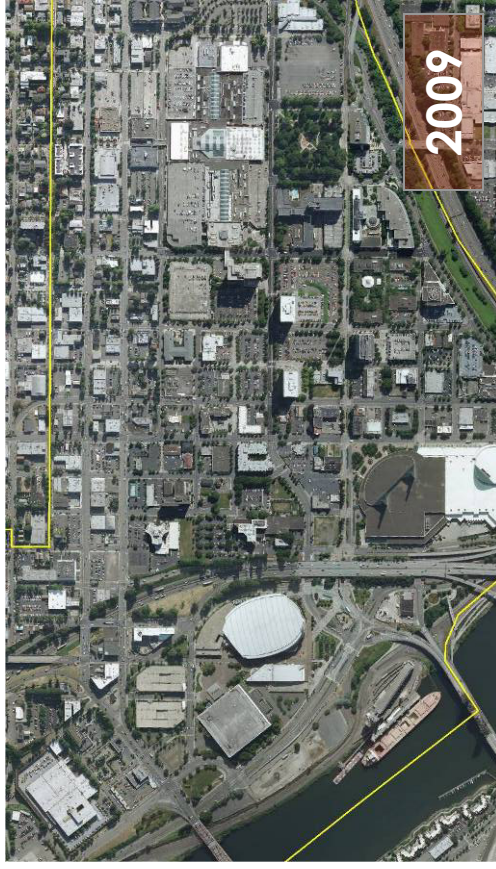
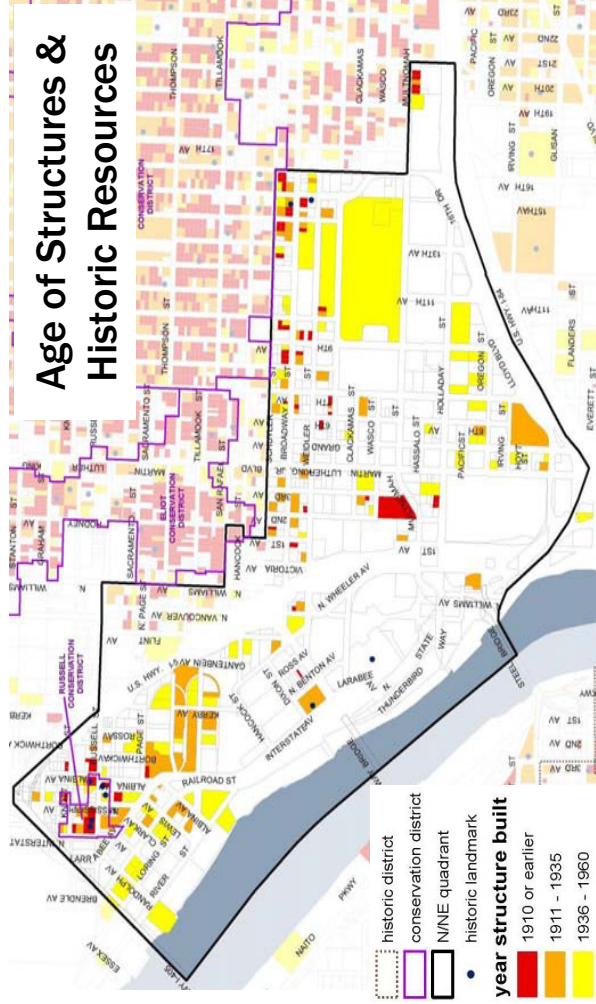


What's going on in the N/NE Quadrant?

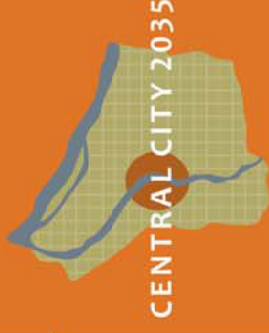


Area history and resources

- Themes:
 - Distinct & Evolving Communities
 - Importance of Transportation
 - Big Plans, Big Projects, Big Impacts



What is the Public Involvement Plan?

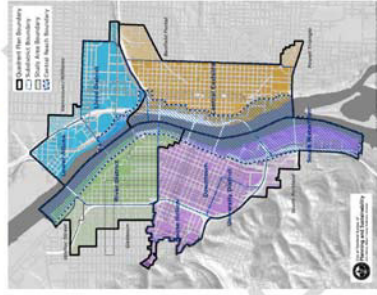


DRAFT Public Involvement Plan

Central City N/NE Quadrant and
I-5 Broadway/Weidler Plans



[Draft Cover Page]
Central City 2035
Public Involvement Plan



(Diagram to be included at a later date)



Central City 2035 Public Involvement Plan

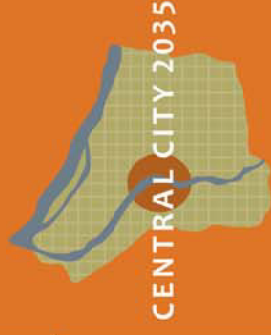
I.	Introduction	1
II.	Project Description and Background	2
	A. Project Overview	2
	B. Project Area	2
	C. Project Goals and Outcomes	3
	D. Project Budget	3
	E. Project Timeline	3
	F. Previous Planning	3
	G. Concurrent Efforts and Coordination	5
III.	Public Involvement Process	7
	A. Public Involvement Principles and Goals	7
	B. Key Stakeholders and Project Advisory Groups	7
	C. Public Involvement Opportunities	9
	D. Public Involvement Timeline	10
	E. Decision Making Process	11
IV.	Accountability and Evaluation	12
	A. Public Involvement Feedback Loop	12
	B. Public Involvement Evaluation	12

Available online for viewing and comment.

The P.I.P. creates a framework for events (some already underway) and committees that have been formed for both CC2035 and the N/NEQ.

PUBLIC INVOLVEMENT

What is the CC2035 Advisory Group?



CC2035 Advisory Group

The Central City 2035 project is guided by an Advisory Group (AG). The AG includes individuals with varied backgrounds and experience. Members are representatives of a diverse array of groups invested in the future of the Central City. The AG will be one of the primary means for ensuring that the public has opportunities to provide meaningful input into the planning process. The AG members are expected to report back to and ask for input from the people or groups they represent and to promote public involvement in project events.



Other advisory groups and committees:

CC2035 Technical Advisory Group

River Plan / Central Reach Technical Advisory Committee

(Other subgroups and working groups to be determined at a later date)

What is the N/NE Quadrant Stakeholder Advisory Committee?



N/NE Q Stakeholder Advisory Committee

The Stakeholder Advisory Committee (SAC) advises project staff and makes recommendations to the Portland City Council and the Director of the Oregon Department Transportation on policy and project proposals resulting from the N/NE Quadrant and I-5 Broadway/Weidler planning process. The committee has members with wide representation from area stakeholders and community interests, including: business and neighborhood associations, property owners, affordable housing, cultural heritage, the environment, economic equity, labor, urban design and transportation.



Other advisory groups and committees:

N/NE Quadrant Technical Advisory Committee

(other subcommittees of the Stakeholder Advisory Committee to be determined at a later date)

PUBLIC INVOLVEMENT

How can you get involved and stay informed?



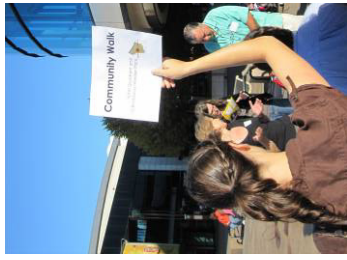
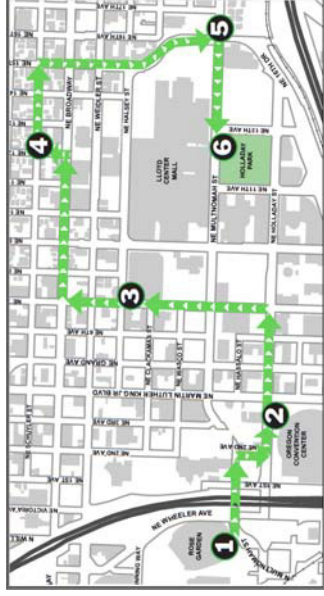
CENTRAL CITY 2035

COMMUNITY WALKS IN THE N/E QUADRANT



1. Lloyd District Walk - 1.75 miles

Saturday, September 25, 2010
9:30 a.m. - 11:30 a.m.



2. Lower Albina Walk - 1.3 miles

Wednesday, September 29, 2010
5 p.m. - 7 p.m.



N/NE Quadrant and I-5 Broadway/Weidler Plans

PUBLIC INVOLVEMENT

How can you get involved and stay informed?



CENTRAL CITY 2035

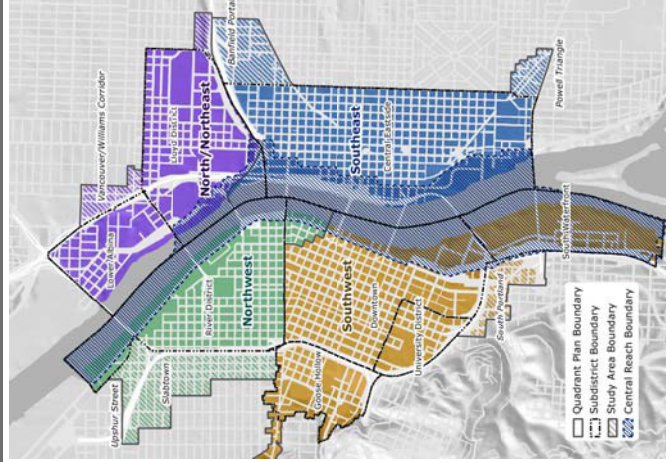
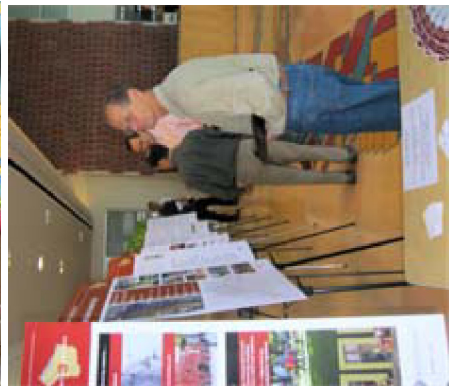
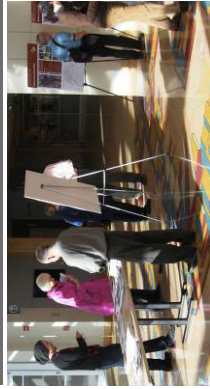
CENTRAL CITY 2035

Open House

Tuesday, October 12, 2010 | 4:00 p.m. – 7:00 p.m.
Main Lobby at 1900 SW Fourth Avenue, Portland, OR 97201



CENTRAL CITY 2035



Rose Quarter
Development
Framework Plan



CENTRAL CITY 2035

N/NE QUADRANT

N/NE Quadrant and
I-5 Broadway/Weidler
Plans

Designing the Future of the Rose Quarter, Lower Albina and Lloyd Districts

Joint
Open
House



November 15, 2010
4:30 p.m. to 7:00 p.m.
Memorial Coliseum
300 North Winning Way












PUBLIC INVOLVEMENT

How can you get involved and stay informed?



CENTRAL CITY 2035

Symposium Series and Forums

	October 22, 2010	Housing and Community Development 1
	November 12, 2010	Housing and Community Development 2
	December 16, 2010	Economic Vitality 1
	January 13, 2011	Economic Vitality 2
	January 14, 2011	The Willamette River 1
	January 20, 2011	FORUM on the Willamette River
	February 18, 2011	The Willamette River 2
	January 2011 (TBD)	Urban Design
	January 2011 (TBD)	Mobility 1
	February 2011 (TBD)	Mobility 2
	March 2011 (TBD)	FORUM on all themes

Forums: A chance to learn about the current state of the plan and offer feedback.

Symposium Series: Intense and focused work sessions that drill into tough issues organized by topic area.



Dates are set through the end of 2010. For updates and details on the schedule, please check the project website at www.portlandonline.com/bps/cc2035

PUBLIC INVOLVEMENT

How can you get involved and stay informed?



Other upcoming events:

- **Central City 2035**
 - **Advisory Group Meetings**
 - November 16, December 7, January 18
- **N/NE Quadrant**
 - **Stakeholder Advisory Committee Meetings**
 - December 9, January 13
 - **Public Workshop**
 - February 24 (Tentative)

Join Us!

PUBLIC INVOLVEMENT

Where can you get more information?



Please Visit the Central City 2035 Website

You can use this site to view background reports, project updates, and other project related information. From this site you can also contact the CC2035 team and request to be placed on our mailing list and email updates list.



Email & Snail Mail

Subscribe to our mailing list to receive email updates and written legal notices.



CC2035 News

Subscribe to our RSS feed for the latest news and project developments.



Meetings & Events

Subscribe to our calendar for updates on public meetings and events.

www.portlandonline.com/cc2035



or email us at:

CC2035@portlandoregon.gov

CC2035 and N/NEQ Project Team:

Stephanie Beckman

John Cole

Troy Doss

Elisa Hamblin

Steve Iwata

Karl Lisle

Nicholas Starin

Shannon Buono

Sallie Edmunds

Diane Hale

Lora Lillard

Leslie Lum

Mark Raggett

Mauricio Leclerc

Grant Morehead



URBAN
DESIGN
STUDIO

