

Environmental Services and Oregon Department of Transportation

Collaborative Stormwater Retrofits

January 26, 2011

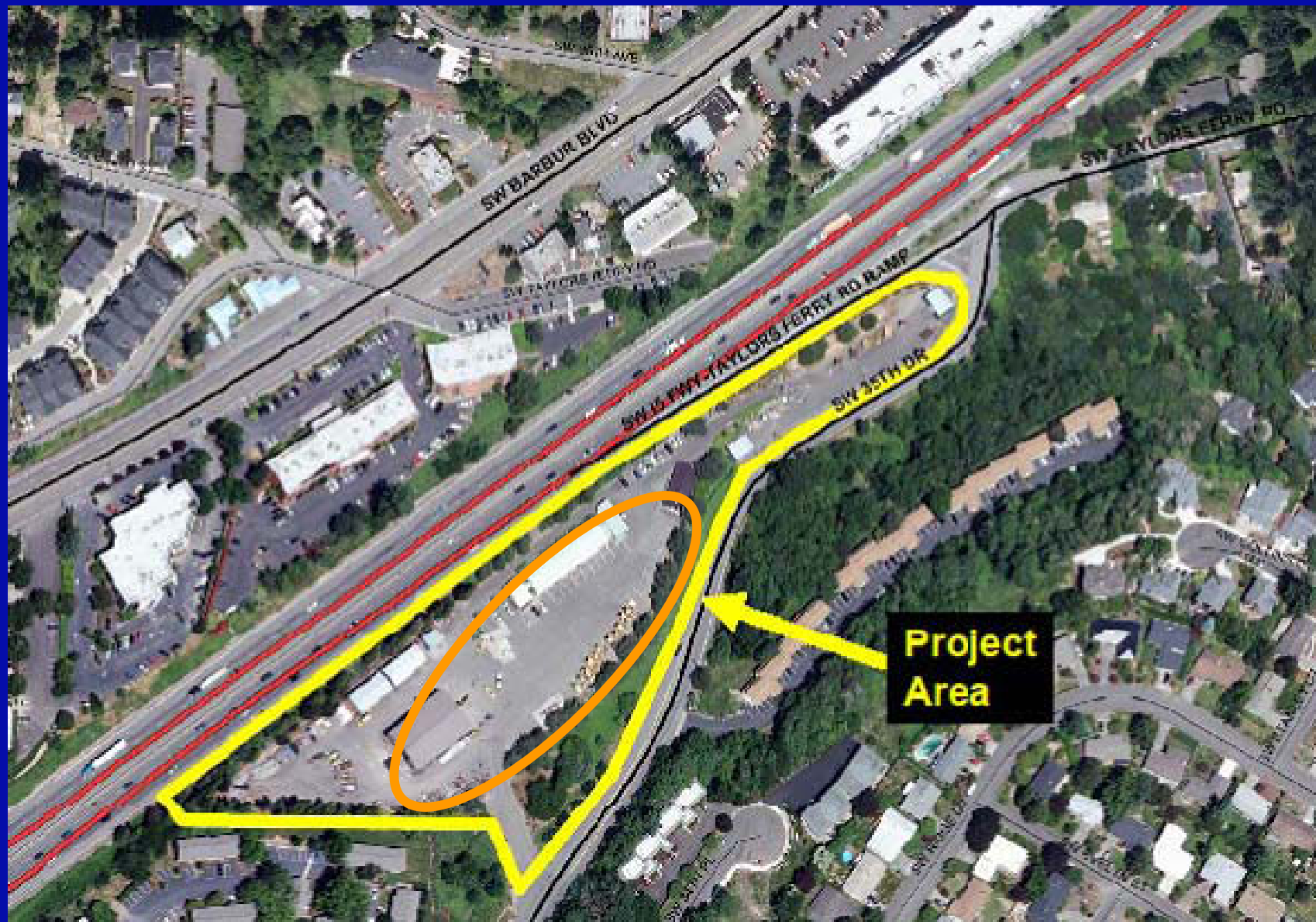


ENVIRONMENTAL SERVICES
CITY OF PORTLAND



Baldock Service Yard

9637 SW 37th Drive













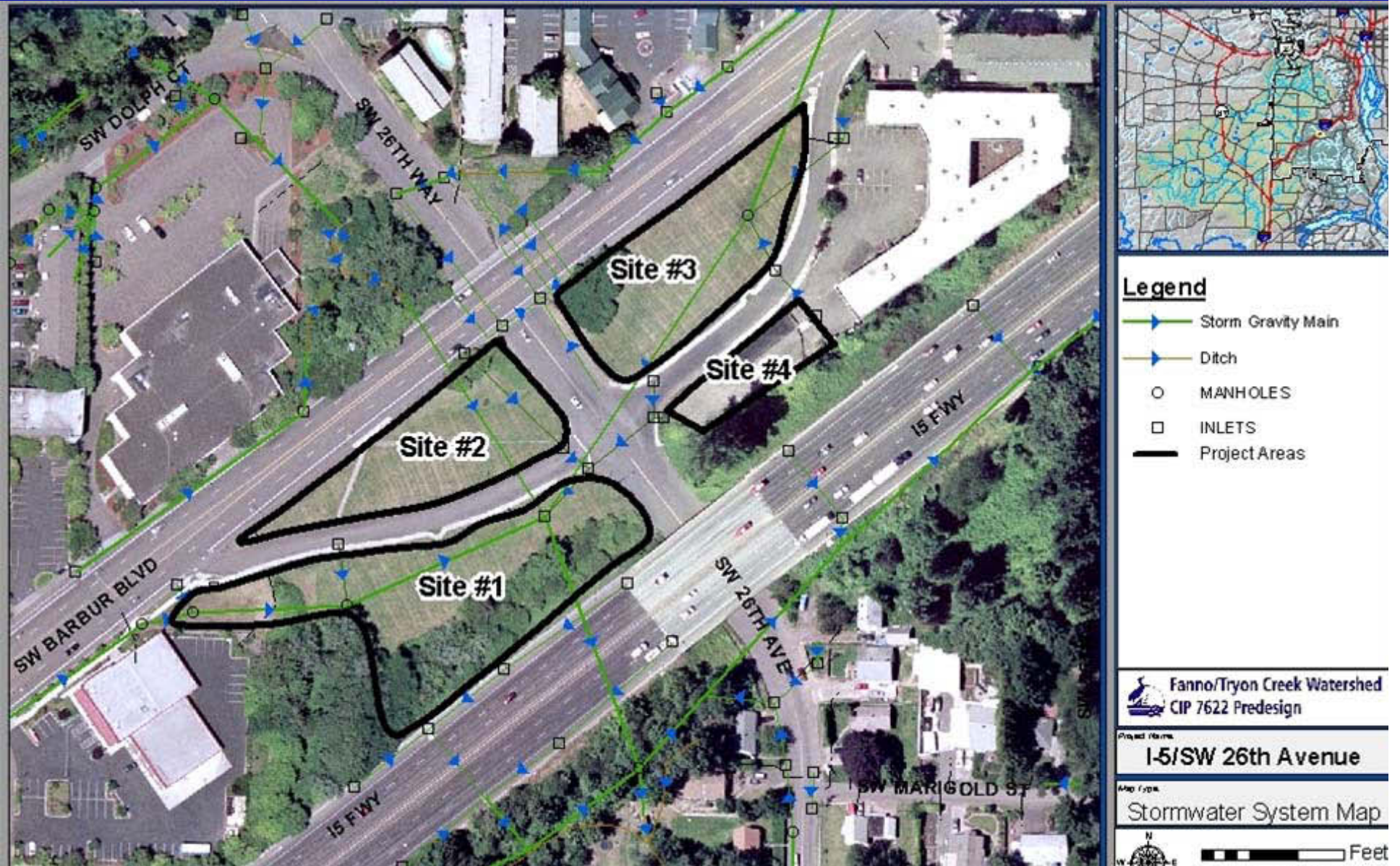












Upcoming Projects Funded in Fiscal Year 2011

- **I-5 and Barbur at SW 26th Avenue**
- **Interstate 205 and SE 82nd Avenue
(Johnson Creek watershed)**

I-5/SW 26th Project





- | | | | |
|---|----------------------------------|---|---------------------------|
|  | 72" ODOT Stormwater Pipe |  | Publicly Owned Taxlots |
|  | I-205 & 82nd MS4 Boundary |  | Portland 100yr Floodplain |
|  | I-205 North MS4 Boundary | | City of Portland Boundary |
|  | ODOT Mitigation Project Boundary |  | Johnson Creek Watershed |
|  | Target Acquisition Area | | |

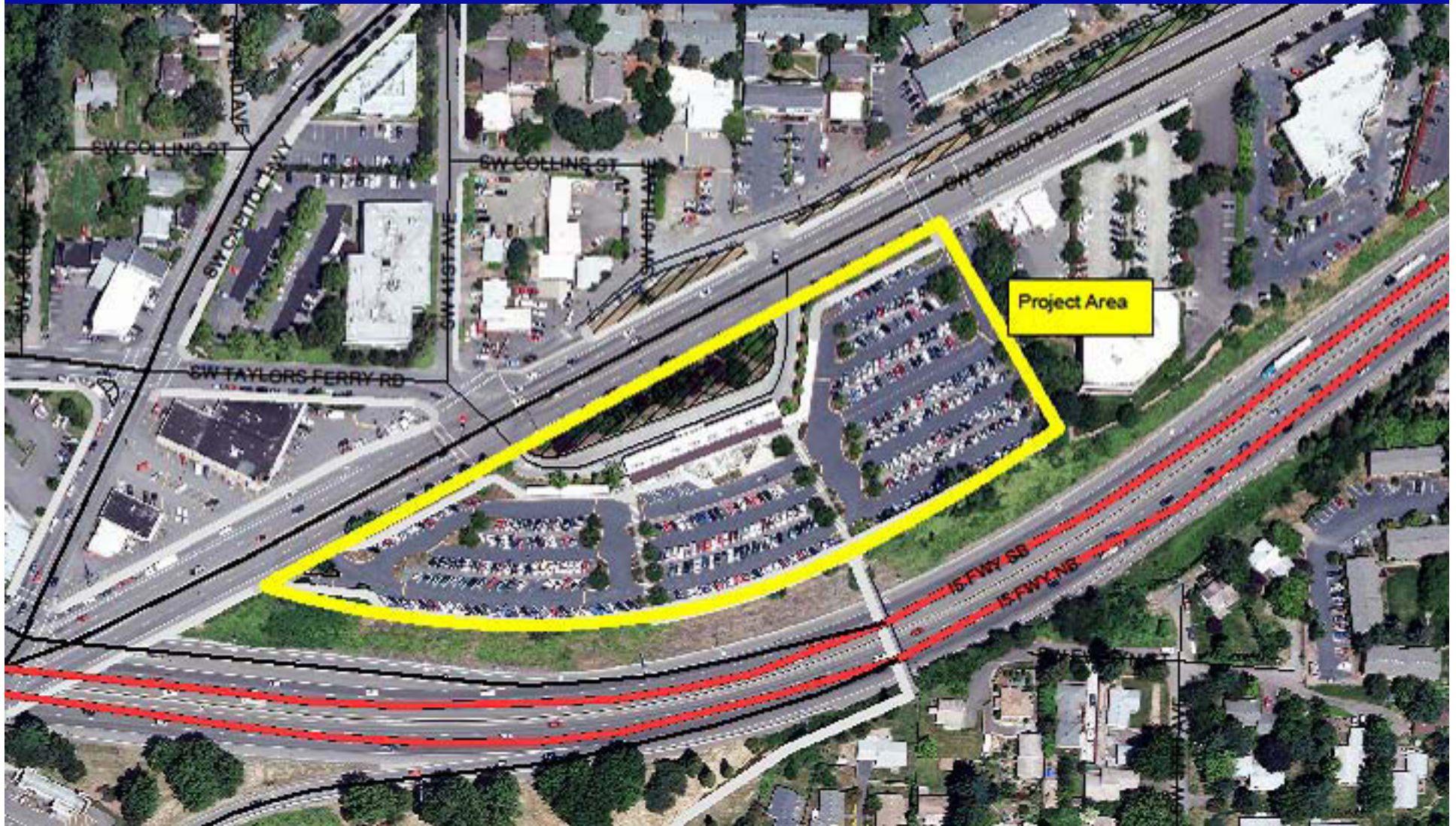
MS4 outfalls to Johnson Creek

1 inch equals 2,724 feet
0 0.25 0.5 Miles



Barbur Boulevard Transit Center

9750 SW Barbur Boulevard





West Parking Lot
Barbur Transit Center



ENVIRONMENTAL SERVICES
CITY OF PORTLAND



Oregon
Department
of Transportation