

700

# ACCEPTANCE

Portland, Oregon, March 5, 1965

**RAY SMITH**  
Auditor of the City of Portland,  
Room 202, City Hall  
Portland 4, Oregon  
Dear Sir:

This is to advise the City of Portland, Oregon, that I hereby accept the terms and provisions of Ordinance No. 119957 granting a revocable permit to the Union Oil Company of California, to increase its gasoline storage facilities at its Portland terminal at 5500 N.W. Doane Street, by the installation of one (1) 20,000 gallon aboveground storage tank, under certain terms and conditions, and declaring an emergency,

and in consideration of the benefits to be received thereunder by me I hereby agree to abide by and perform each and all of the terms and provisions thereof applicable to me.

Very truly yours,

UNION OIL COMPANY OF CALIFORNIA

[CORPORATE  
SEAL]

By

*[Handwritten signature]*

P.O. Box 3458, Portland, Oregon 97208

Approved as to form:

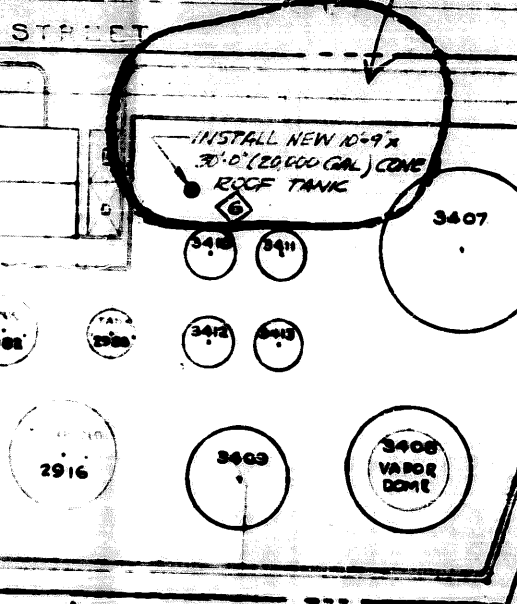
*[Handwritten signature]*  
CITY ATTORNEY

RECEIVED  
MAY 4 9 43 AM '65  
RAY SMITH, AUDITOR  
OF PORTLAND, ORE.

\*When an acceptance is required from a firm or corporation the Acceptance must be signed by an officer of the firm or corporation stating his or her official title, and corporations must affix the corporate seal.

IF IMPOUNDING WALL 2'-4"  
Y FOR TANK FARM #1  
AL) PLUS VOLUME DISPLACED  
LL.  
GALLONS.  
WITH 2'-4" HIGH WALL IS 50,170 GALLONS

WALL, AVE. HT. = 3.25'  
CAPACITY FOR TANK FARM #1  
PLUS VOL. DISPLACEMENT  
D. CAPAC. = 47,696 BBLs.  
ALL = 62,500 BBLs.



NORTH FRONT STREET

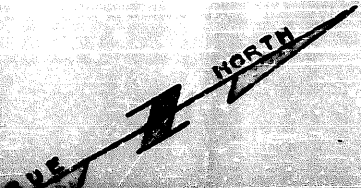
10' x 200' ASPHALT STORAGE PAD

STANDARD OIL CO. DOCK

UNION OIL CO DOCK

TANK FARM #2  
SEE DWG L2C-285 - SHT NO. 9

FRONT ST & WHARF SECTION  
SEE DWG L2C-285 - SHT NO. 10



6 TANK FARM #2. AVERAGE HEIGHT OF WALL 12'-0".  
 REQUIRED IMPOUNDING WALL CAPACITY = 162,512 BBL.  
 ACTUAL IMPOUNDING WALL CAPACITY = 336,000 BBL.

5

TANK FARM #4. AVERAGE HEIGHT OF IMPOUNDING WALL 2'-4".  
 REQUIRED IMPOUNDING WALL CAPACITY FOR TANK FARM #4  
 IS 110% OF LARGEST TANK (20,000 GAL.) PLUS VOLUME DISPLACED  
 BY ALL OTHER TANKS WITHIN WALL.  
 REQUIRED CAPACITY = 39,360 GALLONS.  
 ACTUAL CAPACITY OF COMPOUND WITH 2'-4" HIGH WALL IS 60,170 GALLONS

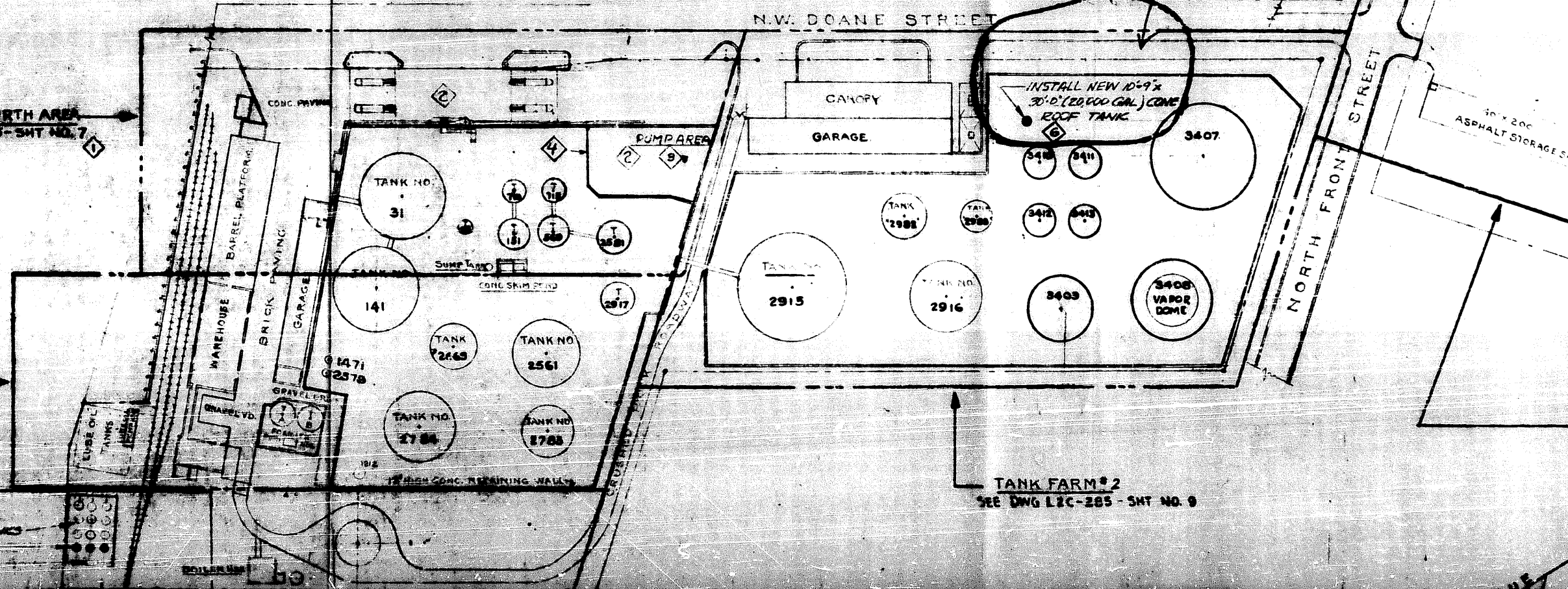
4 CONCRETE IMPOUNDING WALL, AVE. HT. = 3.25'  
 REQUIRED IMPOUNDING WALL CAPACITY FOR TANK FARM #1  
 110% CAPAC. OF LARGEST TANK PLUS VOL. DISPLACEMENT  
 OF ALL OTHER TANKS; REQ'D. CAPAC. = 47,696 BBLs.  
 ACTUAL CAPAC. WITH 3.25' WALL = 62,500 BBLs.

TANK FARM #1-NORTH AREA  
 SEE DWG F2C-285-SHT NO. 7

TANK FARM #1-SOUTH AREA  
 SEE DWG F2C-285-SHT. NO. 8

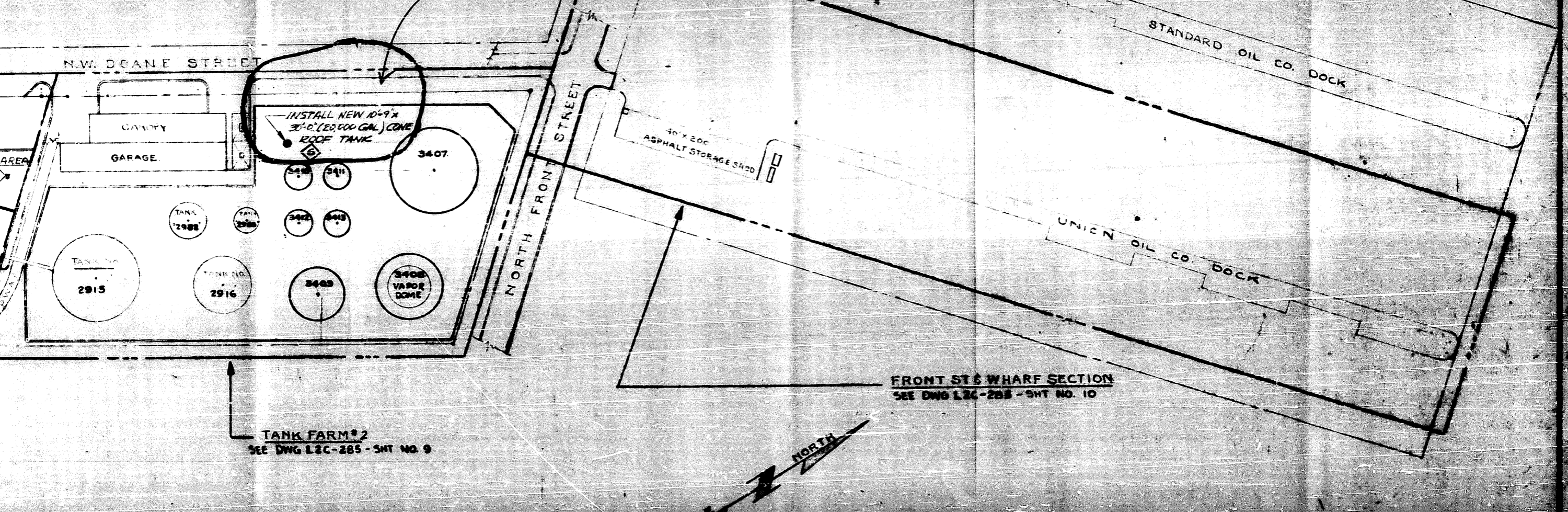
TANK FARM #2  
 SEE DWG L2C-285-SHT NO. 9

5 TANK FARM #4  
 11 EXISTING 20,000 GAL. TANKS  
 ONE FUTURE 20,000 GAL. TANK  
 IMPOUNDING WALL ADDITION



A 4. AVERAGE HEIGHT OF IMPOUNDING WALL 2'-4"  
 IMPOUNDING WALL CAPACITY FOR TANK FARM 4  
 LARGEST TANK (20,000 GAL) PLUS VOLUME DISPLACED  
 OTHER TANKS WITHIN WALL.  
 CAPACITY = 39,350 GALLONS.  
 CAPACITY OF COMPOUND WITH 2'-4" HIGH WALL IS 50,170 GALLONS

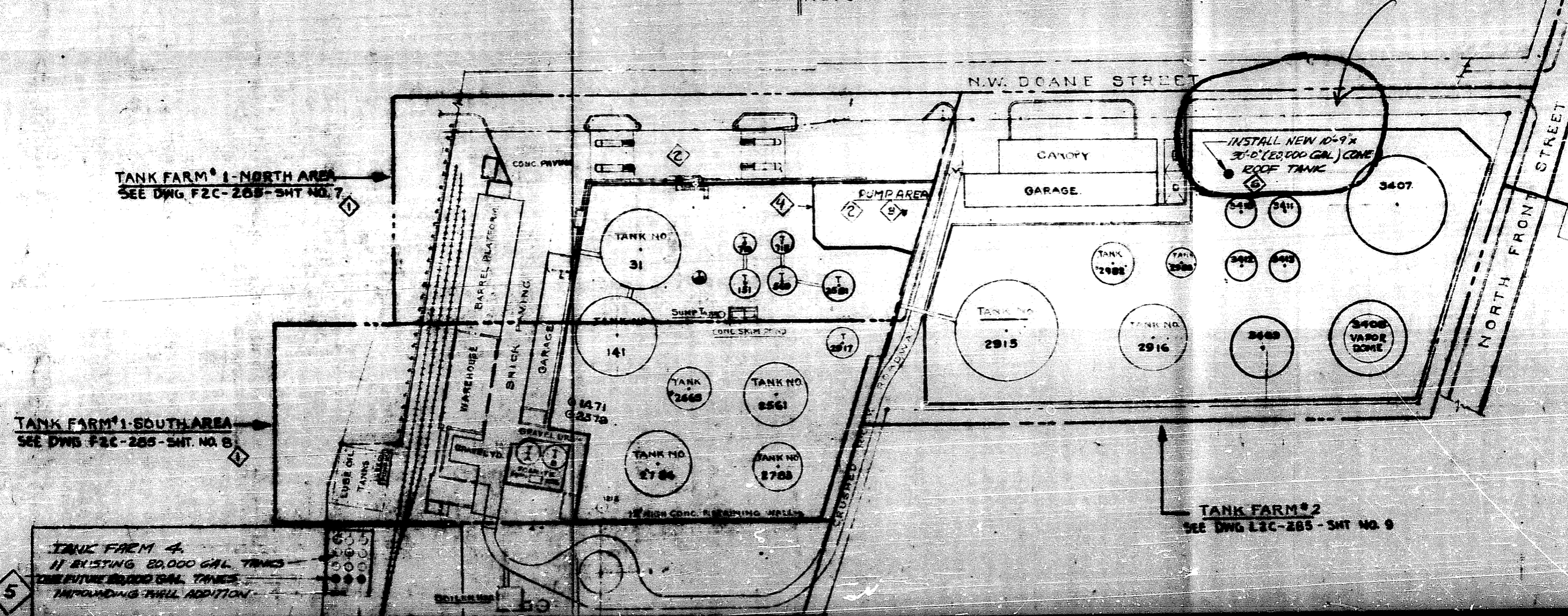
CONCRETE IMPOUNDING WALL, AVE. HT. = 3.25'  
 IMPOUNDING WALL CAPACITY FOR TANK FARM #1  
 AC. OF LARGEST TANK PLUS VOL. DISPLACEMENT  
 OTHER TANKS; REQ'D. CAPAC. = 47,696 BBLs.  
 CAPAC. WITH 3.25' WALL = 62,500 BBLs.



6 TANK FARM #2 AVERAGE HEIGHT OF WALL 12'-0"  
 REQUIRED IMPOUNDING WALL CAPACITY = 162,512 BBL.  
 ACTUAL IMPOUNDING WALL CAPACITY = 536,000 BBL.

5 TANK FARM #4 AVERAGE HEIGHT OF IMPOUNDING WALL 2'-4"  
 REQUIRED IMPOUNDING WALL CAPACITY FOR TANK FARM #4  
 IS 110% OF LARGEST TANK (20000 GAL) PLUS VOLUME DISPLACED  
 BY ALL OTHER TANKS WITHIN WALL.  
 REQUIRED CAPACITY = 39,380 GALLONS.  
 ACTUAL CAPACITY OF COMPOUND WITH 2'-4" HIGH WALL IS 50,170 GALLONS

4 CONCRETE IMPOUNDING WALL, AVE. HT. = 3.25'  
 REQUIRED IMPOUNDING WALL CAPACITY FOR TANK FARM #1  
 110% CAPAC. OF LARGEST TANK PLUS VOL. DISPLACEMENT  
 OF ALL OTHER TANKS; REqd. CAPAC. = 47,696 BBL.  
 ACTUAL CAPAC. WITH 3.25' WALL = 62,500 BBL.



TANK FARM #1-NORTH AREA  
 SEE DWG F2C-285-SHT NO. 7

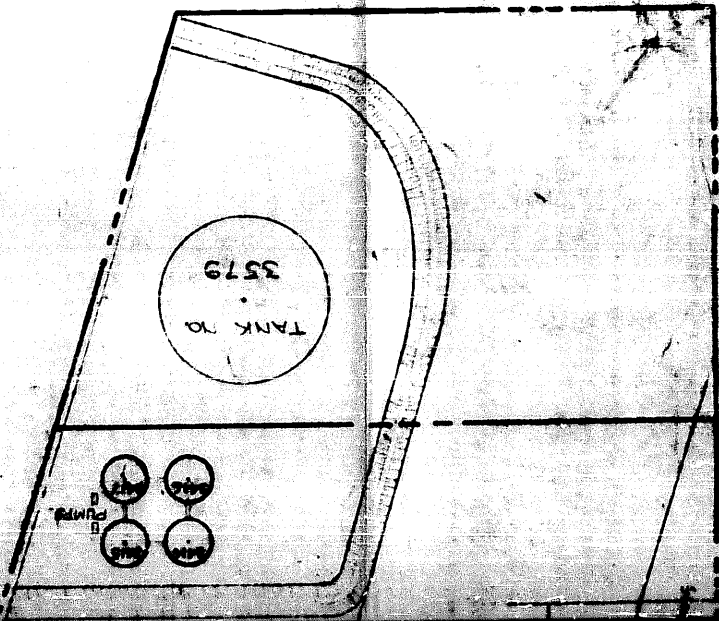
TANK FARM #1-SOUTH AREA  
 SEE DWG F2C-285-SHT. NO. 8

TANK FARM #2  
 SEE DWG F2C-285-SHT NO. 9

5 TANK FARM #4  
 11 EXISTING 20,000 GAL TANKS  
 THE FUTURE 20,000 GAL TANKS  
 IMPOUNDING WALL ADDITION

REV. NO.	DATE	DESCRIPTION
1	7-21-64	ISSUED FOR APPROVAL
2	4-21-63	CHANGED SL. NO. 2 TO 3
3	2-12-51	REMOVED THE 14" DIA. MANHOLE SLUG. MOVED TO
4	5-10-62	ADDED LEGAL DESCRIPTION & SPIN PUMP
5		POLE CONSTRUCTION
6	12-1-63	NEW CONC. POUND WALL AND
7	8-7-64	REMOVED THE 14" DIA. MANHOLE SLUG. MOVED TO
8		ADDED LEGAL DESCRIPTION & SPIN PUMP
9		TANK FARM NO. 3 AREA
10		PROCESS & UTILITY PIPING - GENERAL FIELD PLAN
11		TANK FARM NO. 2 AREA
12		PROCESS & UTILITY PIPING - GENERAL FIELD PLAN
13		TANK FARM NO. 1 SOUTH AREA
14		PROCESS & UTILITY PIPING - GENERAL FIELD PLAN
15		TANK FARM NO. 1 NORTH AREA
16		PROCESS & UTILITY PIPING - GENERAL FIELD PLAN
17		TANK FARM NO. 2 AREA
18		PROCESS & UTILITY PIPING - GENERAL FIELD PLAN
19		TANK FARM NO. 3 AREA
20		PROCESS & UTILITY PIPING - GENERAL FIELD PLAN

REV. NO.	DATE	DESCRIPTION
1	7-21-64	ISSUED FOR APPROVAL
2	4-21-63	CHANGED SL. NO. 2 TO 3
3	2-12-51	REMOVED THE 14" DIA. MANHOLE SLUG. MOVED TO
4	5-10-62	ADDED LEGAL DESCRIPTION & SPIN PUMP
5		POLE CONSTRUCTION
6	12-1-63	NEW CONC. POUND WALL AND
7	8-7-64	REMOVED THE 14" DIA. MANHOLE SLUG. MOVED TO
8		ADDED LEGAL DESCRIPTION & SPIN PUMP
9		TANK FARM NO. 3 AREA
10		PROCESS & UTILITY PIPING - GENERAL FIELD PLAN
11		TANK FARM NO. 2 AREA
12		PROCESS & UTILITY PIPING - GENERAL FIELD PLAN
13		TANK FARM NO. 1 SOUTH AREA
14		PROCESS & UTILITY PIPING - GENERAL FIELD PLAN
15		TANK FARM NO. 1 NORTH AREA
16		PROCESS & UTILITY PIPING - GENERAL FIELD PLAN
17		TANK FARM NO. 2 AREA
18		PROCESS & UTILITY PIPING - GENERAL FIELD PLAN
19		TANK FARM NO. 3 AREA
20		PROCESS & UTILITY PIPING - GENERAL FIELD PLAN



TANK FARM 3-NORTH AREA  
SEE DWG L2C-285-SHT NO. 6

TANK FARM 3-SOUTH AREA  
SEE DWG L2C-285-SHT NO. 40

PLOT PLAN

SEE DRAWINGS SERIES L2C-624  
ADDITIONAL INFORMATION

*Handwritten signature*

**PLOT PLAN**

SEE DRAWINGS SERIES L2C-624 FOR ADDITIONAL INFORMATION

**LEGAL DESCRIPTION OF PROPERTY**

BEGINNING AT THE INTERSECTION OF THE NORTHEASTERLY LINE OF THE NORTHERN PACIFIC RY. CO'S FREIGHT YARDS WITH THE WESTERLY LINE OF THE GEORGE KITTRIDGE DONATION LAND CLAIM, IN SECTIONS 18 & 19, T.14 R.1 E., W.M., MARK POINT IS NORTH 31° 46' 10" EAST 391.18 FEET FROM AN ANGLE CORNER IN SAID CLAIM LINE, THENCE SOUTH 50° 38' 30" EAST 10.10 FEET TO THE TRUE POINT OF BEGINNING, RUNNING THENCE NORTH 51° 16' 10" EAST ALONG THE EASTERLY LINE OF KIM DOANE ST. 276.56 FEET, THENCE NORTH 24° 54' 10" EAST 85.71 FEET, THENCE NORTH 51° 16' 10" EAST 760.15 FEET TO THE INTERSECTION OF THE EASTERLY LINE OF NW. DOANE ST. WITH THE SOUTHWESTERLY LINE OF N.W. FRONT AVE, THENCE SOUTH 41° 41' EAST ALONG SOUTHWESTERLY LINE OF N.W. FRONT AVE, 568.75 FEET, THENCE SOUTH 31° 16' 10" WEST 596.69 FEET, THENCE SOUTH 42° 06' 10" EAST 250.71 FEET, THENCE SOUTH 31° 16' 10" WEST 31.31 FEET, THENCE SOUTH 42° 06' 10" EAST 646.10 FEET, THENCE SOUTH 48° 19' WEST 41.92 FEET TO THE NORTHEASTERLY LINE OF THE NORTHERN PACIFIC RY. CO'S FREIGHT YARDS, THENCE NORTH 56° 38' 50" WEST 109.82 FEET, THENCE NORTH 42° 06' 10" WEST 406.45 FEET, THENCE SOUTH 31° 16' 10" WEST 102.12 FEET, THENCE NORTH 56° 39' WEST 150.48 FEET, THENCE NORTH 42° 06' 10" WEST 22.03 FEET, THENCE NORTH 31° 16' 10" EAST 65.31 FEET, THENCE NORTH 50° 38' 30" WEST 346.72 FEET TO THE PLACE OF BEGINNING.

**DESCRIPTION OF LEASED AREA N.E. OF N.W. FRONT AVE.**

BEGINNING AT THE INTERSECTION OF THE WESTERLY LINE OF THE GEORGE KITTRIDGE DONATION LAND CLAIM WITH THE NORTHEASTERLY LINE OF N.W. FRONT AVE, IN SECTION 18, T.14 R.1 E., W.M., RUNNING THENCE NORTH 41° 41' WEST ALONG SAND NORTHEASTERLY LINE OF N.W. FRONT AVE, 153.39 FEET, THENCE NORTH 48° 57' 26" EAST 1200.0 FEET TO THE HARBOUR LINE OF THE WILLAMETTE RIVER, THENCE SOUTH 41° 41' EAST ALONG HARBOUR LINE 310.0 FEET, THENCE SOUTH 48° 57' 26" WEST 1200.0 FEET TO THE NORTHEASTERLY LINE OF N.W. FRONT AVE, THENCE NORTH 41° 41' WEST 156.61 FEET TO THE PLACE OF BEGINNING.

CONTRACTOR	EHRHART & ARTHUR INC.
CONTRACT JOB NO.	301
CONTRACTOR	WILLBRIDGE TERMINAL PORTLAND OREGON
CONTRACT JOB NO.	1949
CONTRACTOR	STORAGE EXPANSION AND PLANT MODERNIZATION 1949
CONTRACTOR	WILLBRIDGE TERMINAL PORTLAND OREGON
CONTRACT JOB NO.	301

DATE	7-22-69	ISSUED FOR APPROVAL
REV. NO.	4-21-60	CHANGED SH. NO. 7 & 8
DATE	2-12-51	REMOVED TR. 1413 - ADDED SH.49 - MOVED LOADING RACKS
REV. NO.	5-10-62	ADDED LEGAL DESCRIPTION & SPPL PUMP LOCATION & ISSUED FOR CONSTRUCTION
DATE	12-7-63	NEW CONC. IMPOUND WALL AND NEW PUMP AREA
REV. NO.	8-7-64	ADDED THREE TRUCKS TO TRAIL FASH
DATE	9-10-64	ADDED 27000 GALL. TRAILER TRUCK AREA

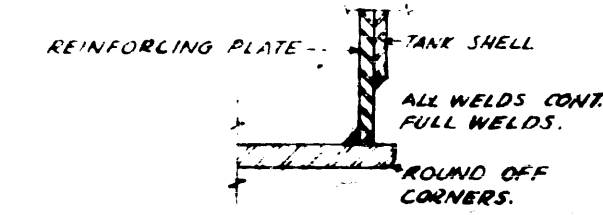
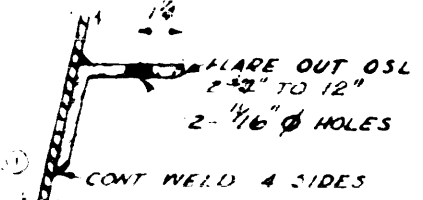
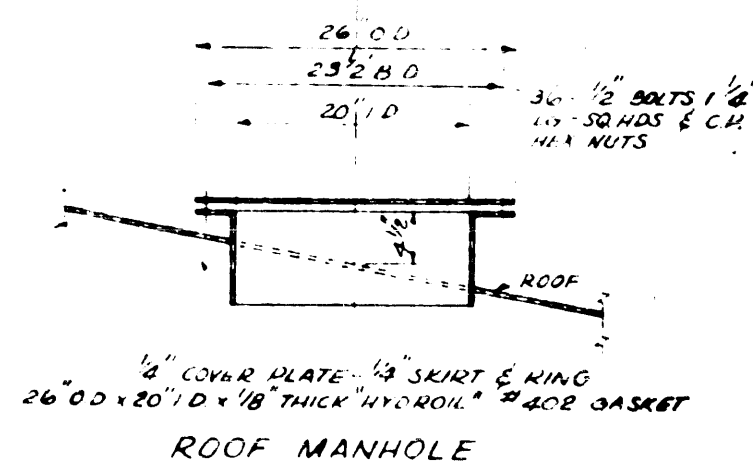
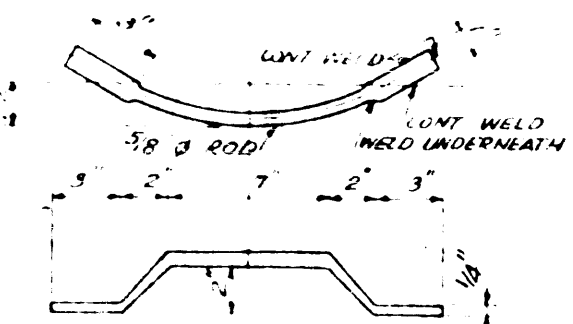
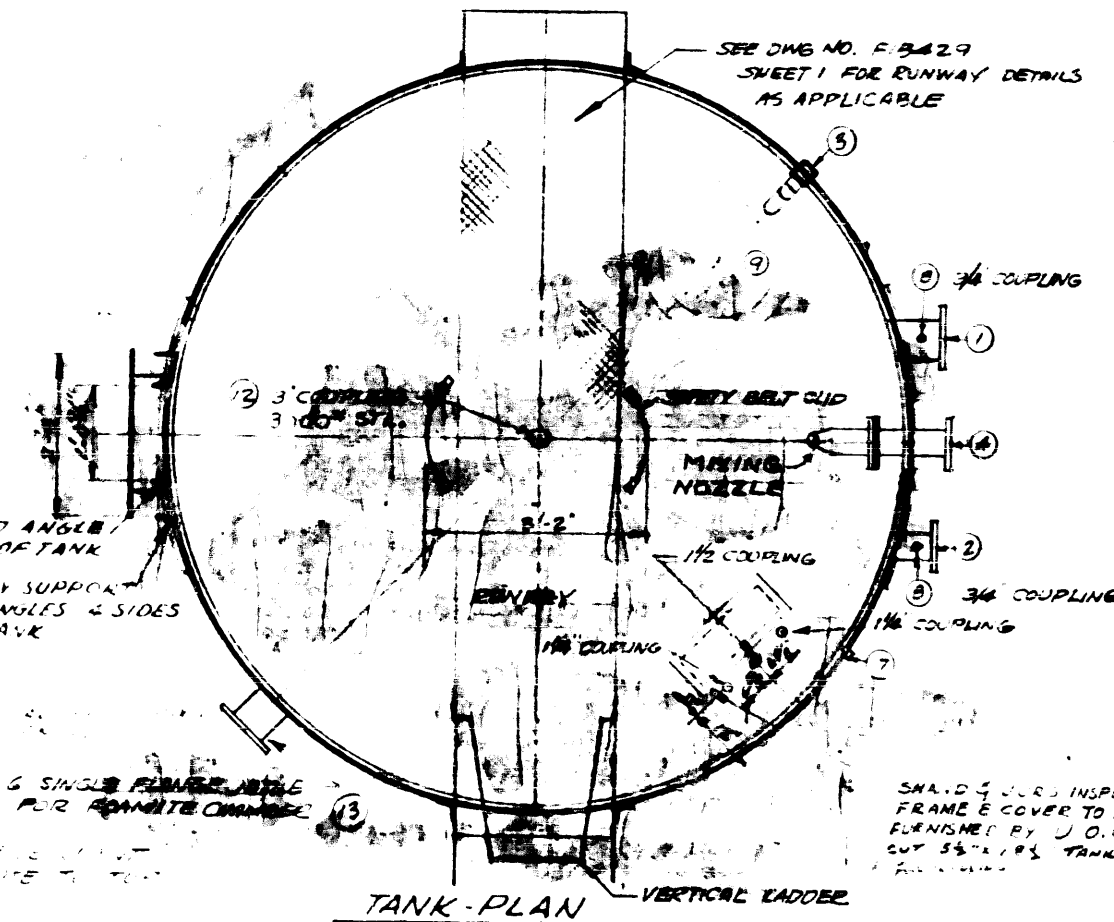
DATE	9-14-49	43489	1-19-62	60279	APPROVED FOR CONSTRUCTION
DATE	9-14-49	43489	1-19-62	60279	APPROVED FOR CONSTRUCTION
DATE	9-14-49	43489	1-19-62	60279	APPROVED FOR CONSTRUCTION
DATE	9-14-49	43489	1-19-62	60279	APPROVED FOR CONSTRUCTION
DATE	9-14-49	43489	1-19-62	60279	APPROVED FOR CONSTRUCTION
DATE	9-14-49	43489	1-19-62	60279	APPROVED FOR CONSTRUCTION
DATE	9-14-49	43489	1-19-62	60279	APPROVED FOR CONSTRUCTION
DATE	9-14-49	43489	1-19-62	60279	APPROVED FOR CONSTRUCTION
DATE	9-14-49	43489	1-19-62	60279	APPROVED FOR CONSTRUCTION
DATE	9-14-49	43489	1-19-62	60279	APPROVED FOR CONSTRUCTION

GENERAL PLOT PLAN AND KEY MAP

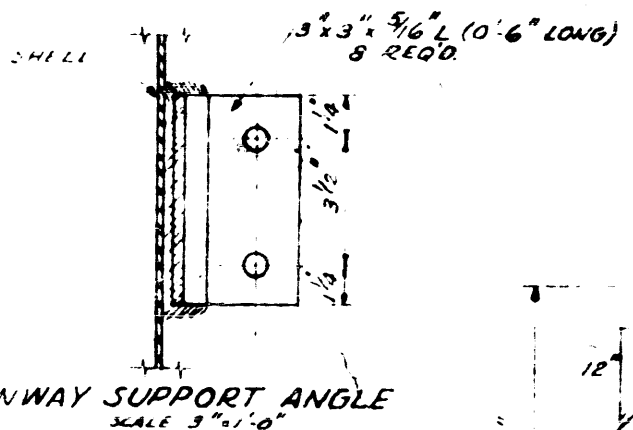
ENC #

UNION OIL COMPANY OF CALIFORNIA

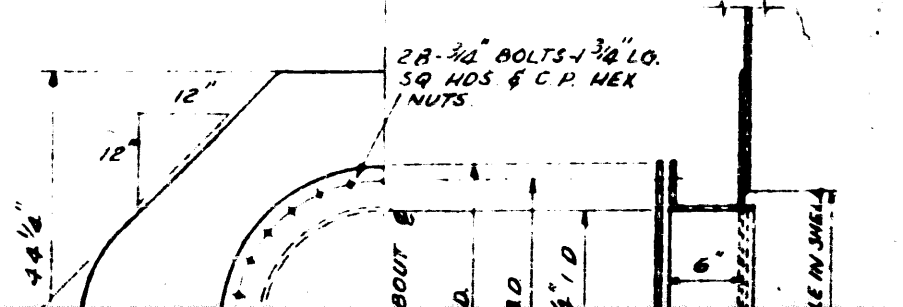
L2C285 REV. 3



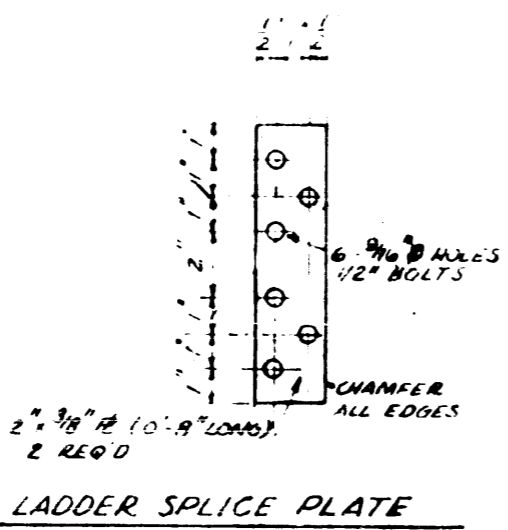
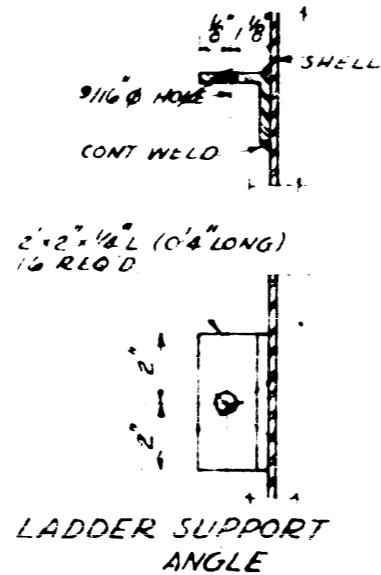
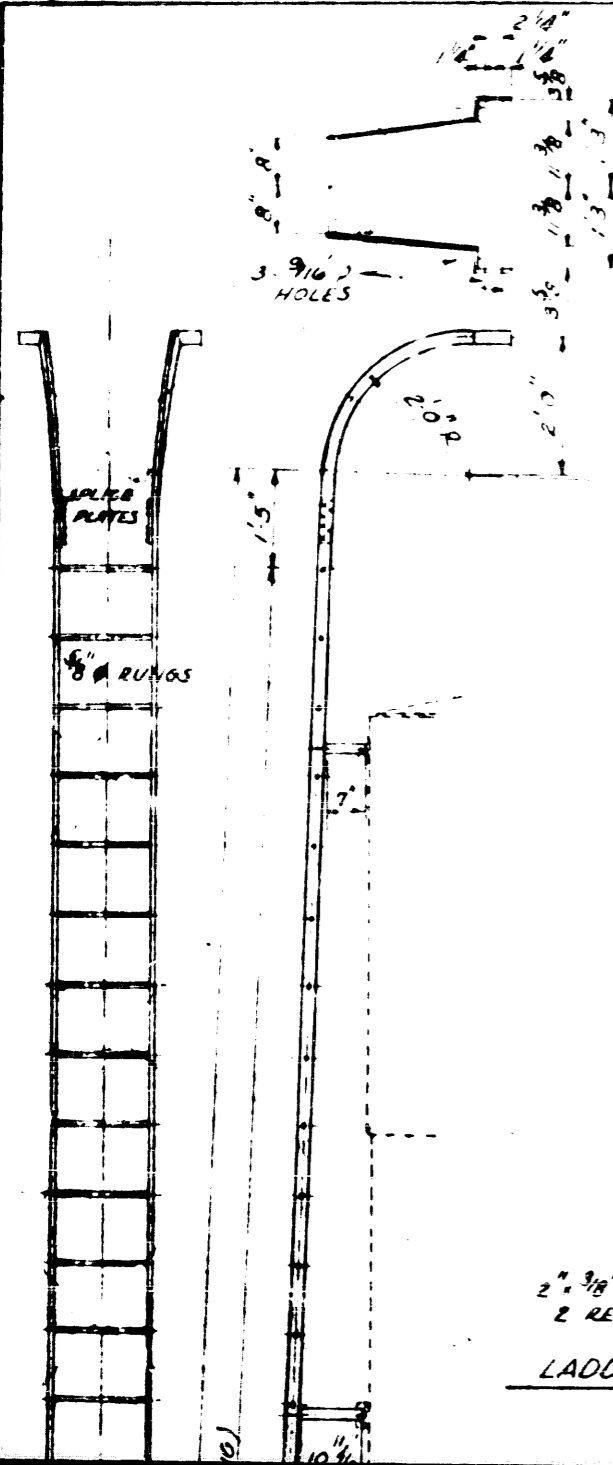
SHIELD & JOINT INSPECTOR  
FRAME & COVER TO BE  
FURNISHED BY U.O.C.  
CUT 55"x185" TANK LANDING  
PLATE



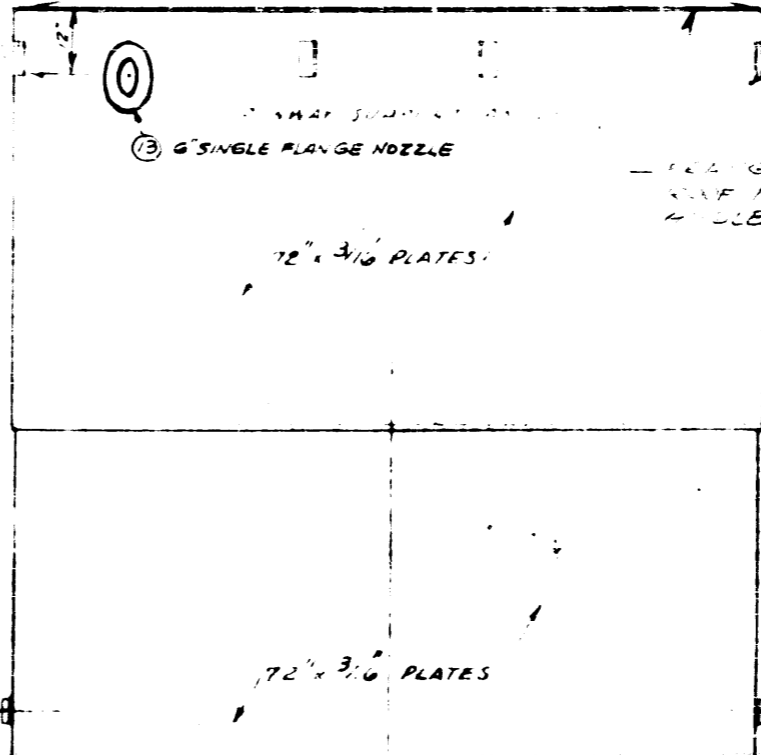
NOTE  
CONT WELD REQUIRED ALL  
4 SIDES ON ALL SUPPORT  
ANGLES AND CLIPS.





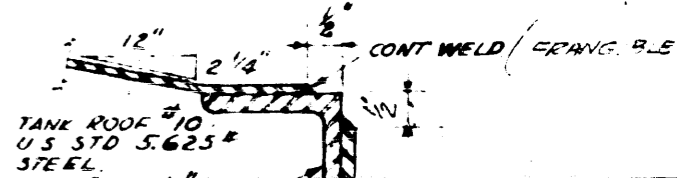
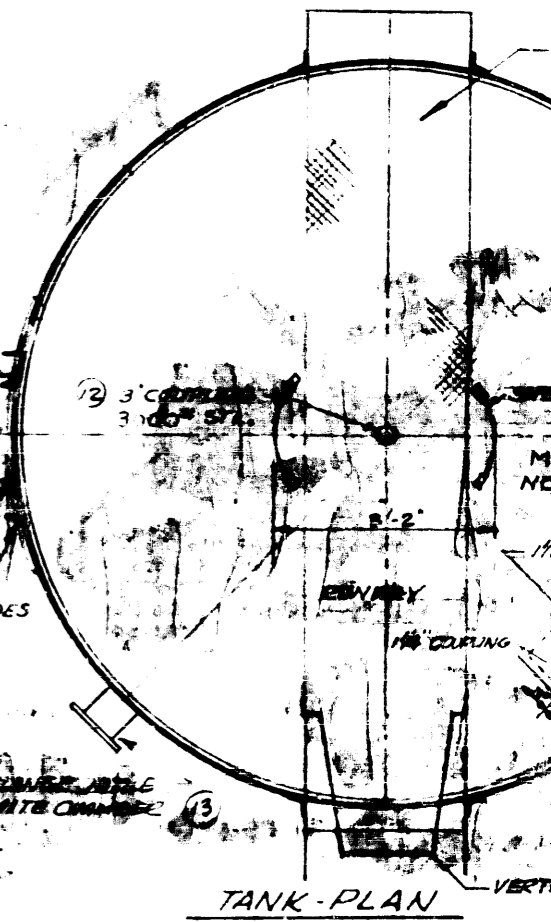


TOP OF 2" x 2" x 1/4" L  
ROOF ANGLE

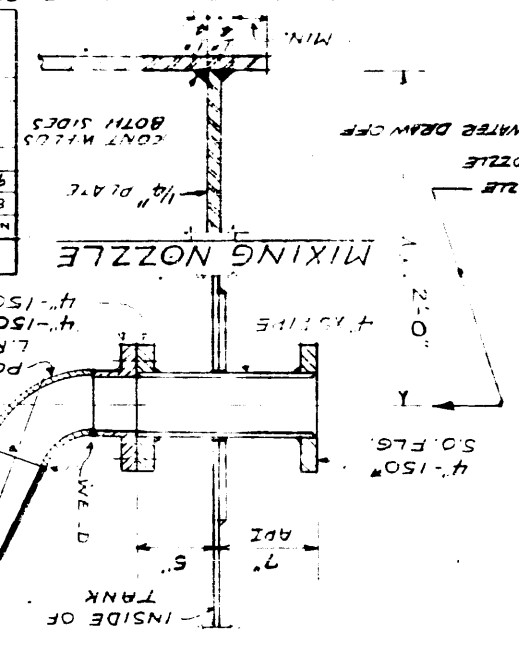


LADDER SUPPORT ANGLE  
 2 SIDES OF TANK  
 RUNWAY SUPPORT  
 4 SIDES OF TANK

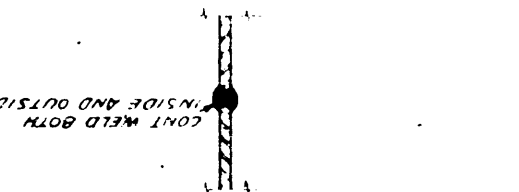
6" SINGLE FLANGE NOZZLE FOR ROCKET CHAMBER



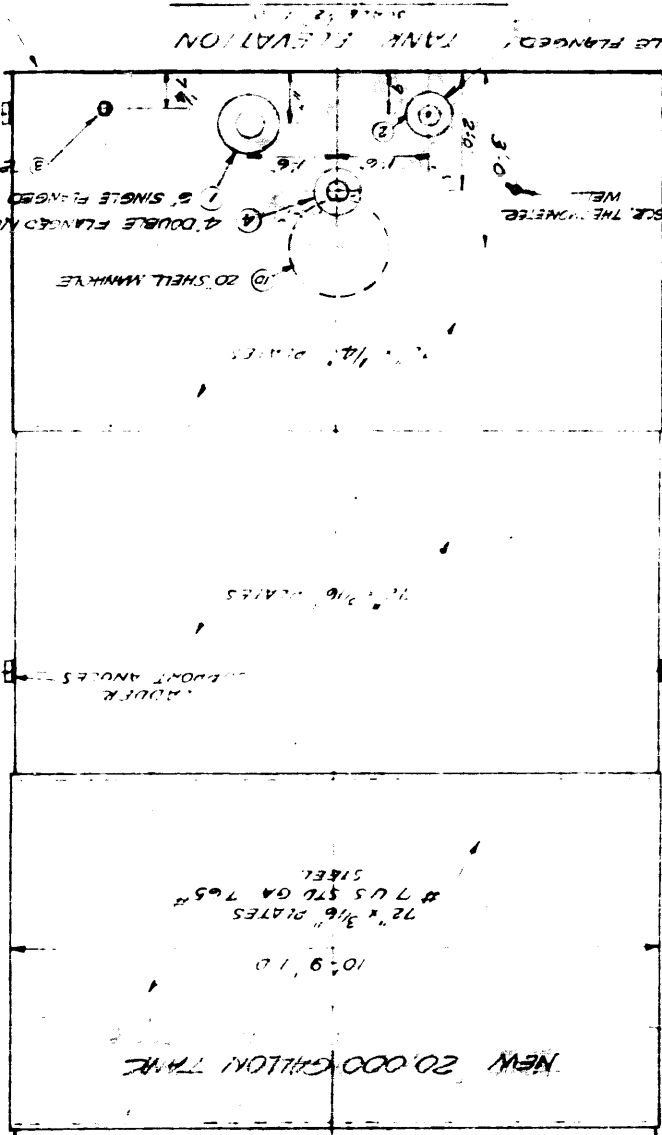
TWO PIECE BOTTOM BUTT WELD TRANSVERSE JOINTS CONTINUOUSLY INSIDE AND OUTSIDE SHELL TO BOTTOM CONNECTION



TYPICAL BUTT JOINT FOR HORIZONTAL & VERTICAL JOINTS



ROOF TO SHELL CONNECTION



③ SINGLE FLANGED OUTLET

⑦ 3/4\"/>

9'-6\"/>

9'-6\"/>

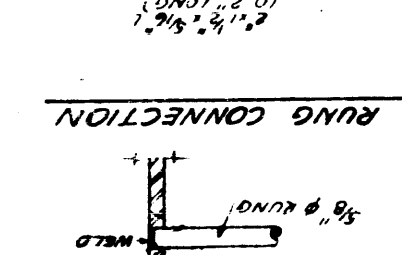
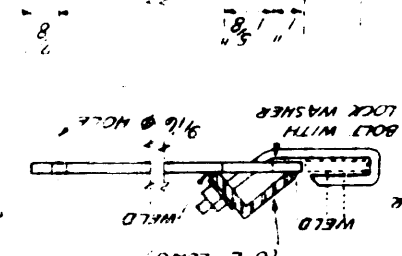
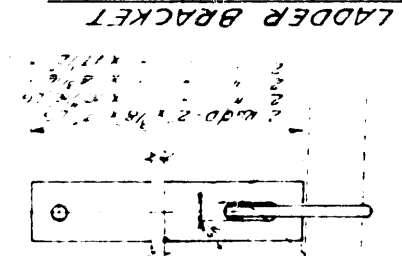
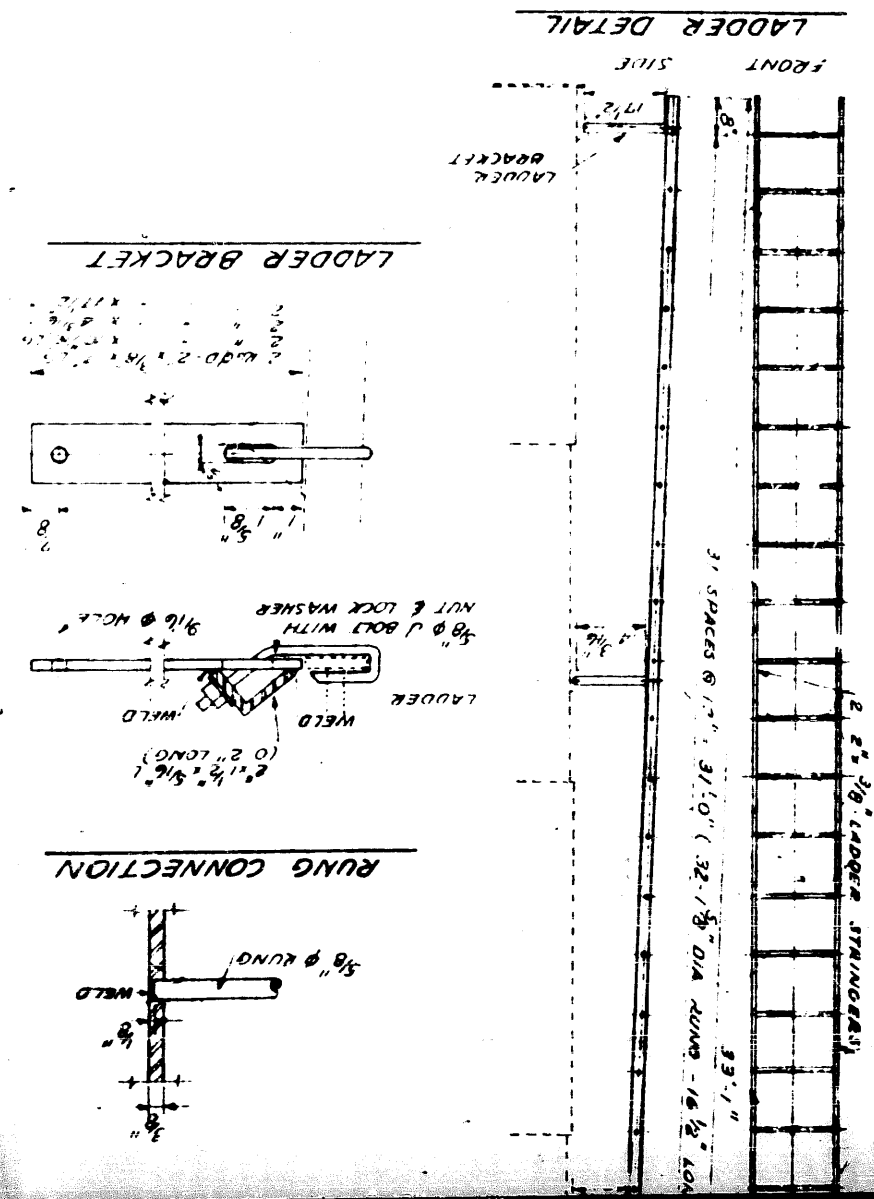
9'-6\"/>

9'-6\"/>

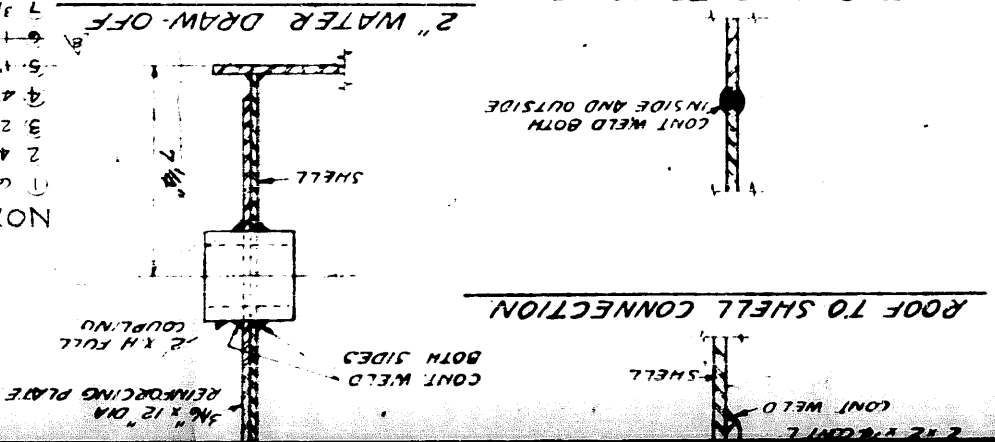
9'-6\"/>

9'-6\"/>

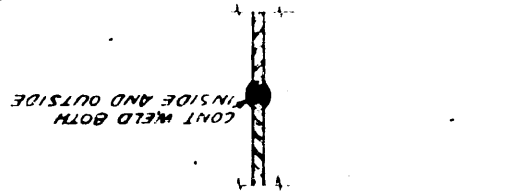
30.0\"/>



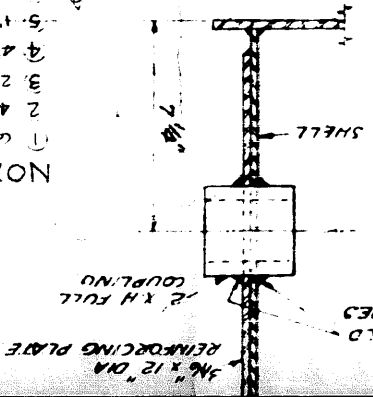
**ROOF TO SHELL CONNECTION**



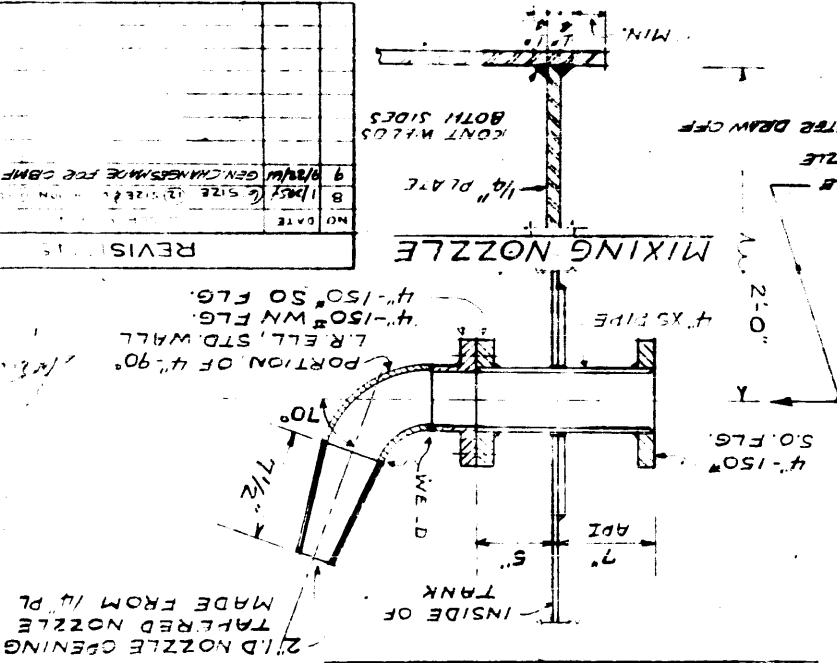
**TYPICAL BUTT JOINT**  
FOR HORIZONTAL & VERTICAL JOINTS



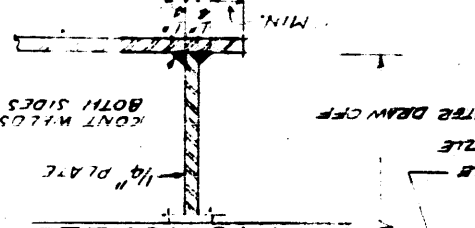
**2" WATER DRAW-OFF**



**MIXING NOZZLE**



**SHELL TO BOTTOM CONNECTION**



**NOZZLE SCHEDULE**

- 1 6" 150# RF INLET - OUTLET
- 2 4" 150# RF INLET - OUTLET
- 3 2" SCR. WATER DRAW-OFF
- 4 2" DUBLE FLANGES VERTICAL
- 5 1" SCR. STEAM COIC OUTLET
- 6 1" SCR. AIR SPARGER
- 7 3/4" SCA THERMOMETER WELL
- 8 3/4" SCR. RELIEF INLET
- 9 20" ROOF MANHOLE
- 10 20" SHELL MANHOLE
- 11 3 SCR. VENT
- 12 3 SCR. VENT
- 13 6" 50# FLEET NOZZLE (FOAM)

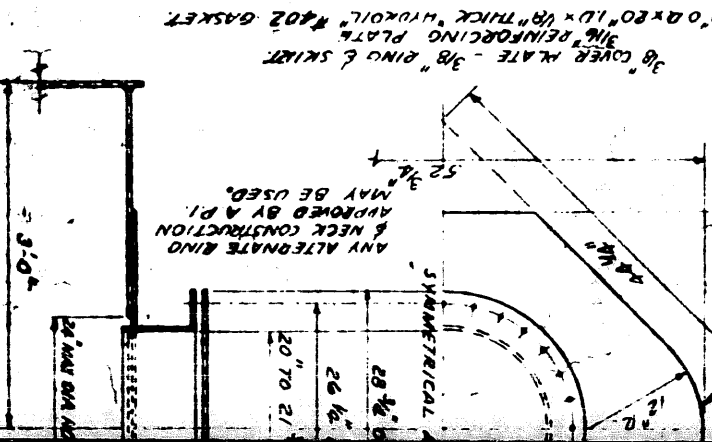
TANK TO BE FABRICATED IN ACCORDANCE WITH API SPECIFICATION FOR WELDED OIL STORAGE TANKS (STD. 650)

• FITTING UP HOLES OF NOT MORE THAN 1/8" DIA. ARE PERMITTED IN SEAMS TO INSURE ACCURATE ALIGNMENT AFTER SHEETS ARE WELDED. BOLTS SHALL BE REMOVED AND FITTING HOLES WELDED CLOSED.

• WEIGHT OF TANK INCLUDING LADDER 9787 LBS.

NO	DATE	REVISIONS
1	11-2-68	CHANGED DIM ON ROOF MANHOLE
2	9-9-68	ADDED NOTE ON WELDING TANK BOTTOM
3	10-2-68	CORRECTED WT OF ROOF PLATE
4	10-2-68	REMOVED LADDER BRKT DIMEN'S
5	9-21-50	CLARIFIED TAPERED MANHOLE
6	9-21-52	ADDED NOTE RE COIL WELD
7	11/17/53	ROOF TANK 2357 - STD. CONNECTION
8	11/17/53	ADDED NOTE RE COIL WELD
9	11/17/53	ADDED NOTE RE COIL WELD

**SHELL MANHOLE**  
SCALE 1" = 1'-0"



**REFERENCE DRAWING**

FIGURE	DESCRIPTION
FIG 73	OCTAGONAL CONCRETE TANK FOUNDATION
FIG 75	COMBINATION RUNWAY AND SIGN BOARD
FIG 55	QUINING CABLE FOR STORAGE TANKS
FIG 15	DETAILS - SPECIAL HARDWARE - RUNWAY PIPING CONNECTION
FIG 81	PIPING CONNECTION

UNION OIL COMPANY OF CALIFORNIA  
L2C-348

WILBRIDGE TERMINAL PROJECT 22-64  
OUTBOARD MOTOR FUEL BLENDING AND STORAGE TANK & ACCESSORIES  
SHOP FABRICATED TANK

OLD F2C-348

CITY HYDRANT

P.L. N 31° 16' 10" E

27" SEWER

12" CONCRETE RETAINING WALL

4-4" BLANKED ORP LINES

1-3" LINE

3-4" 2-6" BLANKED ORP LINES

30" DIA. MATERIAL MANHOLE

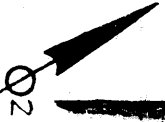
SIGNAL OIL CO. LINES  
1-4" & 2-3"

NAME AS  
K. 3410

NEW 20,000 GAL. TANK  
FOR OUTBOARD MOTOR FUEL

6" SUCT.  
4" DISCH.  
4" MIX. NOZZLE  
22" 1-1/2" FOAM LINES

SEE SHEET NO. 3  
FOR NEW WORK  
IN THIS AREA



YD. LT.

YD. LT.

#3407

ELEV. 33.75

80,575 BBLs

2" AIR LINE

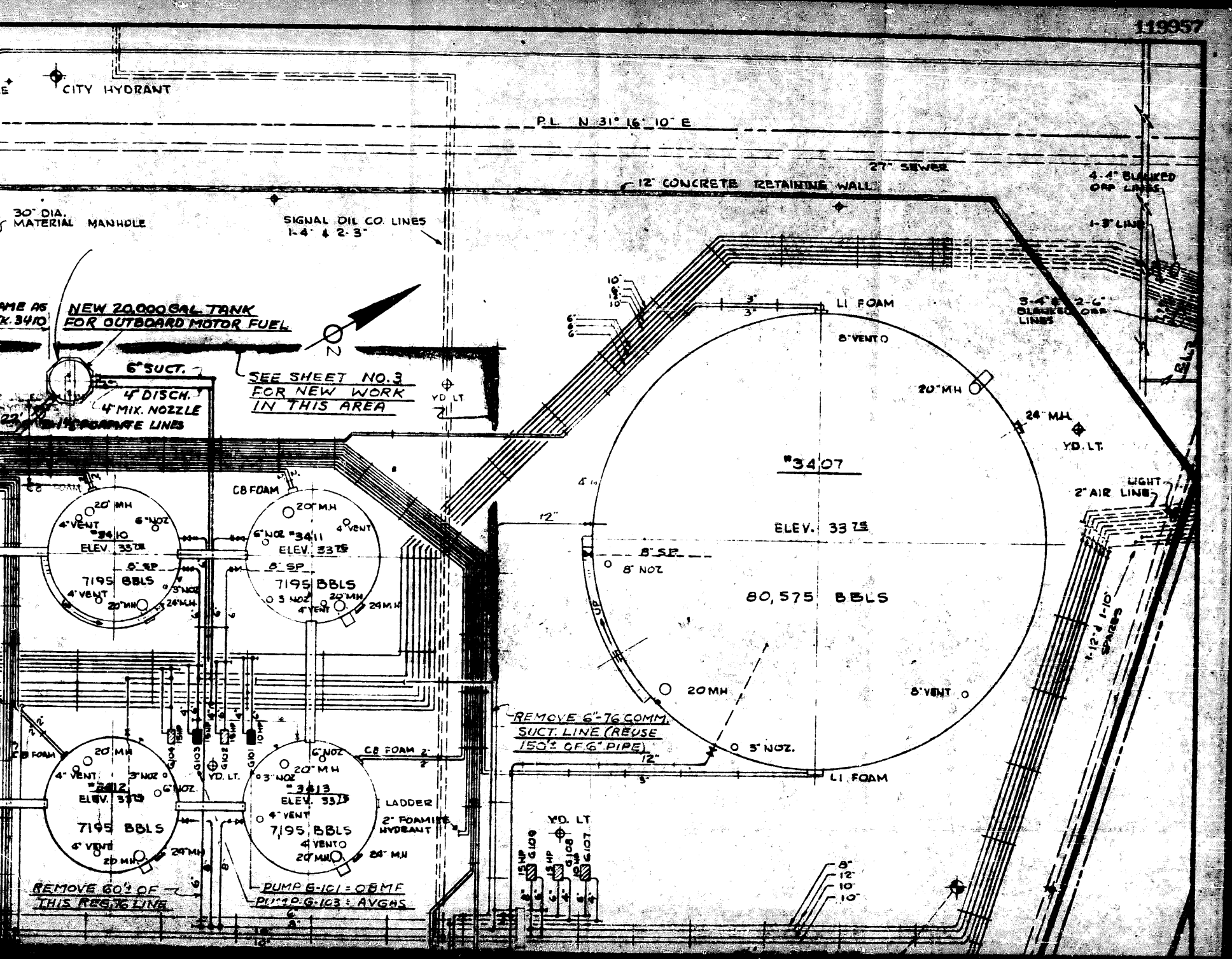
1-1" & 1-1/2" SPACES

REMOVE 6"-76 COMM.  
SUCT. LINE (REUSE  
150' OF 6" PIPE)

LADDER  
2" FOAMING  
HYDRANT

PUMP 6-101 = 08 MF  
PUMP 6-103 = AVGRS

REMOVE 60% OF  
THIS RES. 76 LINE



N.W. DOANE STREET

WATER SERVICE CONNECTION BOX W/ 3" METER → POLE

ASPHALT PAVED PARKING

S.P.P.L. CO. PIPELINE 6130' OF 8" TO PUMP STA.

POWER POLES

POLE CITY HY

27" SEWER

ASPHALT PAVED DRIVEWAY

4" CI WATER

6" CONCRETE TILE DRAIN

TRUCK SCALE

30" DIA. MATERIAL MANHOLE

176' x 36' OPEN CANOPY

2' x 2' SUMP

SAME AS TR. 3410 NEW 2" FOR 00

40' x 224' GARAGE

24' x 75' TRUCK WASH RACK  
4" x 7' TRAP  
2" x 1/2" VALVE  
2" x 1/2" VALVE  
4" x 7' TRAP  
2' x 2' SUMP

TRUCK FARM NO. 2  
MAIN SERVICE PANS SW FOR PUMPS 1124/113

4" -76 COMM. TO LDG. RACK (CHANGE TO OBMF)

4" -76 COMM. TO LDG. RACK (CHANGE TO AVGAS)

2" -6" FORM SOLUTION LINES HUNG ON WALL

4" CI

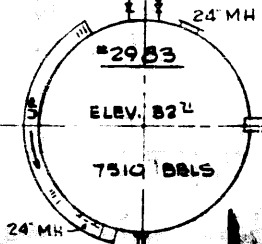
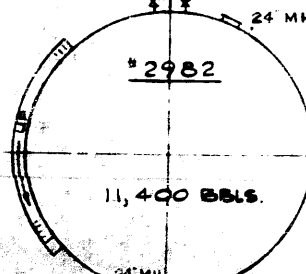
8" STEEL WATER

8" SEWER

MANHOLE

8" SEWER

MANHOLE



RAILROAD ROADWAY

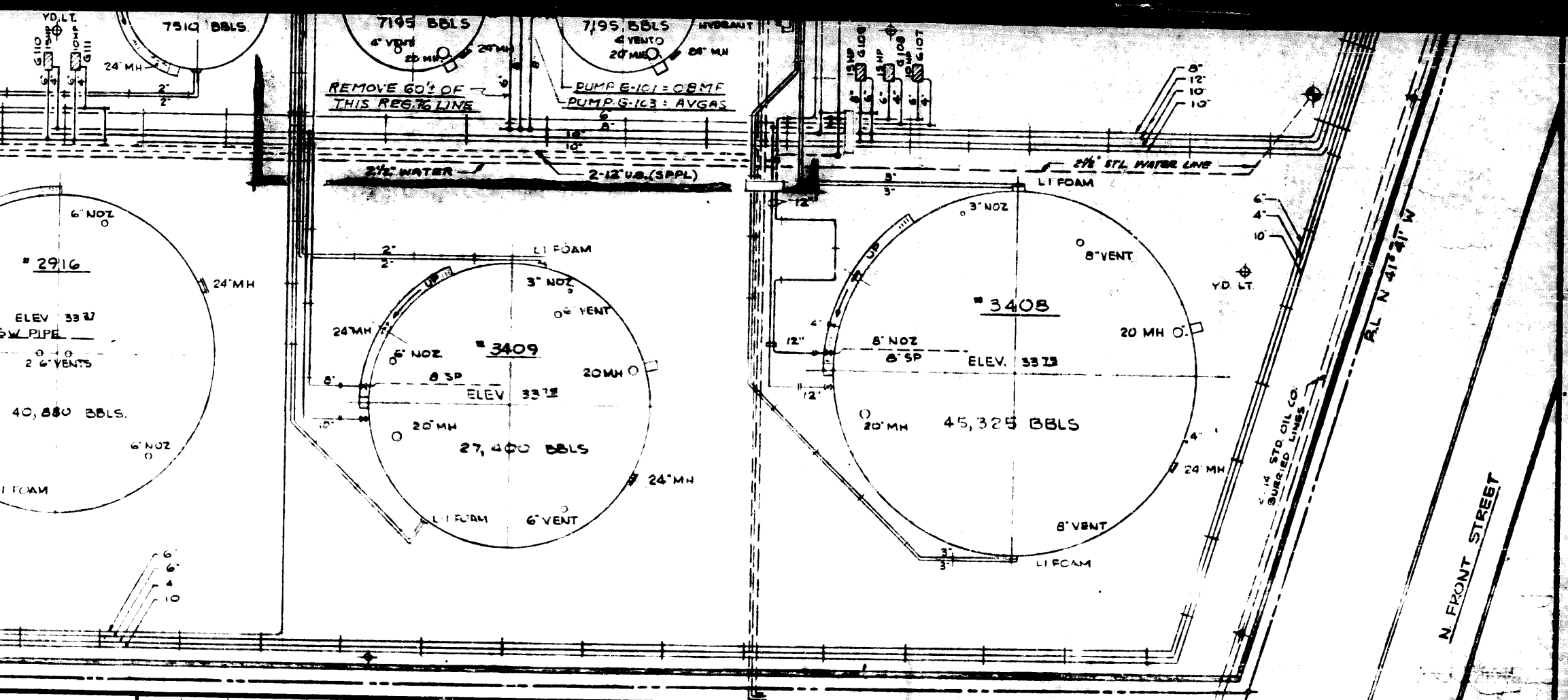
MI FOAM

6" NOZ

6" NOZ

YD LT  
G106  
G105  
G110  
G111  
G112

REMOVE 60 THIS RES



REV. NO.	DATE	REVISED	DESTROY ALL PRINTS BEARING EARLIER DATE	REV. BY	CHK BY	APP'D	APPROVED FOR CONSTRUCTION		
							A. P. S.	DATE	SIGNED
1	2-16-61	RETRACTED & REVISED TO COMPLETE AS BUILT		RM	HP	RB			
2	5-20-61	ADDED SPPL PIPING & WALKS		DAL					

ENC #3

## PORTLAND MARKETING TERMINAL

NEW FACIL. FOR O.B.M.F. (PROJ. # 2-12-61)  
NEW TANKS OPERATING - TANK FARM NO. 2

DRAWING NO. \_\_\_\_\_

L-2-12-64

UNION OIL COMPANY  
OF CALIFORNIA  
LOS ANGELES, CALIF.

SCALE 1" = 20'  
DATE 8-20-64



JOINT U.O. CO & S.O. CO. SEWER PIPE

NORTH & SOUTH BASE LINE

MANHOLE

POWER POLE

212'-0" TO BRASS SCREW

N 31°-16'-10"E 129.87

27" SEWER

10'-0" OFFSET

10,000 GAL BURIED SPILL TANK

302'-0" TO BRASS SCREW

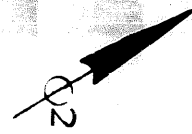
CANOPY DRAINS

27'-6" TO BASE LINE

ASPHALT

CONCRETE PAVING CANOPY

PAVING



TRUCK SCALE

SCALE HOUSE

GRAVEL

NEW 6"-76 COMM.

TOP OF FIREWALL 4" ABOVE GRADE 3" WAYSE LINE

EXCAVATE FOR PIPEWAY  
INSTALL CONC. PIPE SUPPORTS

NEW 6" TO LDB. RACK

NEW 700 GPM PUMP 2 FOR 76 COMM

SEE SHEET B FOR DETAILS THIS AREA

NEW 8" SUCT. CONN. TO EXIST. 12 FLO. U.S.

6" STRAINER & 6" GATE VALVE

ISOLATOR FILTER 1600 GPM 250 PSI

BRING TO SPOOL LINE

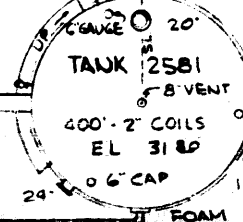
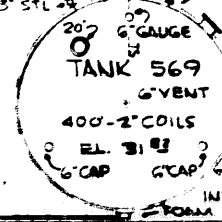
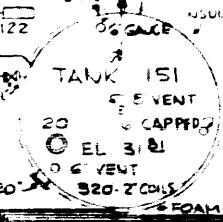
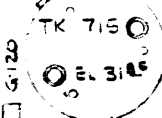
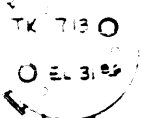
1" F.L. STD. PIPE

1" F.L. STD. PIPE BODY

2" TAIL PIPING

WALL 12"

3'-12"



GUARD RAILS  
ASPHALT PAVED ROADWAY

4" CONCRETE FIELD LINES  
4" CONCRETE FIELD LINES  
4" CI WATER SPRAY LINE  
5" GAUGED OFFICE

4" CI WATER MAIN  
FIG 3 FFG CABINET  
4" FOAMITE LINES

INSULATION  
20'  
6" VENT  
6" CAP  
6" VENT  
320'-2" COILS  
FOAM

INSULATION  
FOAM



PLANT LIGHTING SERVICE POLE

MAIN WATER METER BOX-PLANT SERVICE 4" METER

N 31°-16'-10"E 376.36

POWER POLE

CITY HYDRANT

JOINT U.O. CO & S.O. CO. SEWER PIPE

NORTH & SOUTH BASE LINE

MANHOLE

FOAM CART HOUSE

15'9" x 25'-4" OFFICE

18'0" x 28'-0" OFFICE

SEE SHEET 4 FOR HIDING CHANGES AT THESE MANHOLES FROM # 2 TO # 3

MAKE NEW 2" TO 4" AVG GAS LINE AND RUN NEW 2" BB FILLING LINE TERMINATE WITH BB FILLING PIPES WITH VALVES AND COUPLERS TO WATER EXIST.

EXIST 4" REG 76 GAS LINE TO T.C. LGE. RACK CONVERT TO AVGAS.

ASPHALT OVER BRICK PAVING

52'-0" x 163'-6" COVERED PLATFORM

MEN'S LUNCH ROOM  
WOMEN'S LUNCH ROOM  
16'7" x 26'-0" LUNCH ROOM

CANOPY DRAINS

CONCRETE PAVING

CONCRETE FIELD

10,000 GAL BURIED SPILL TANK

WATER SPRAY LINES

4" CI WATER SPRAY GAUGER'S OFFICE

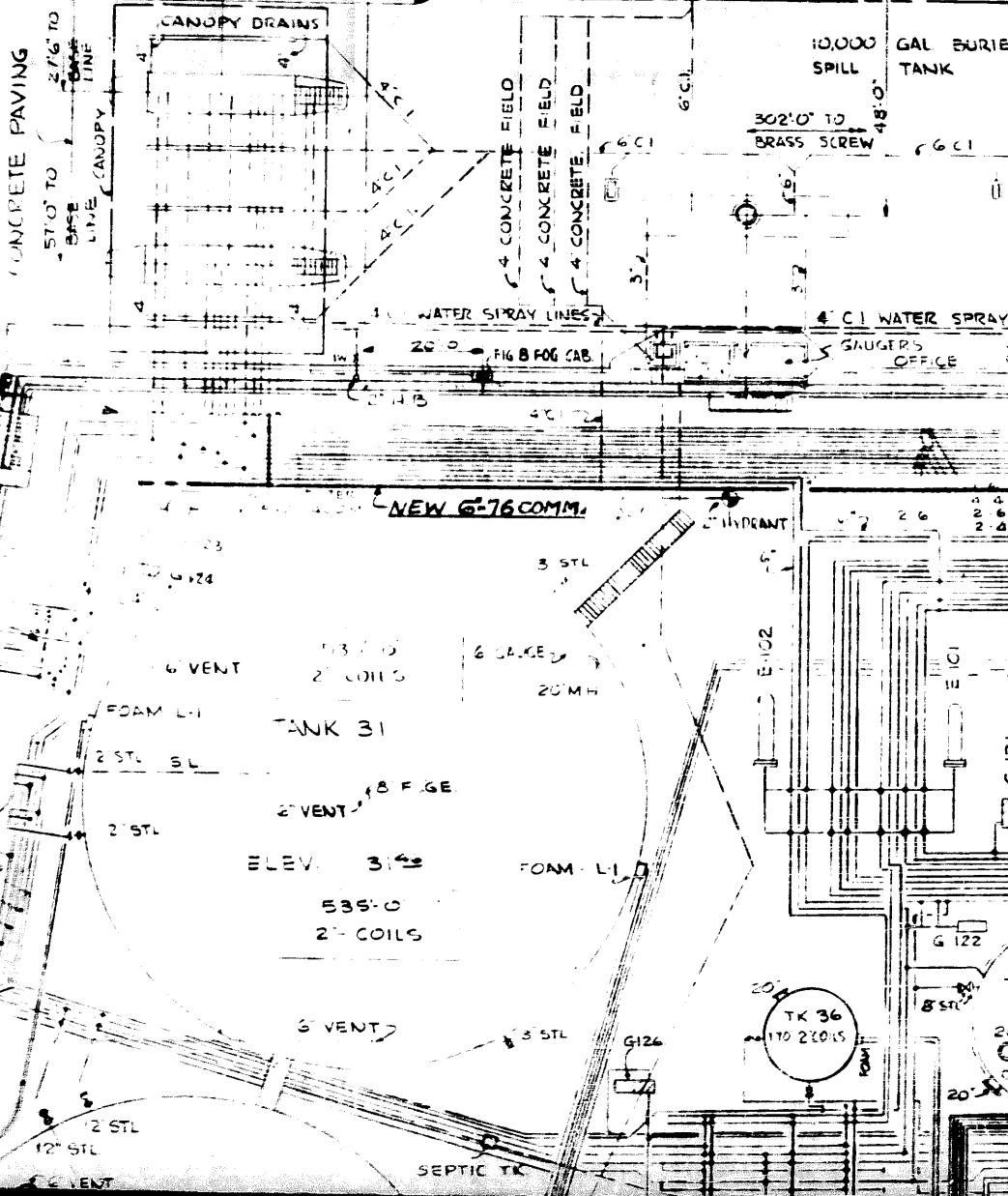
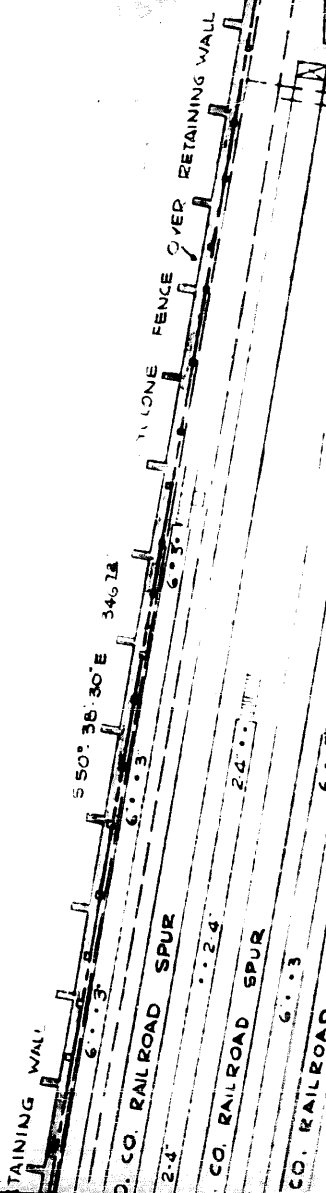
NEW 6"-76 COMM.

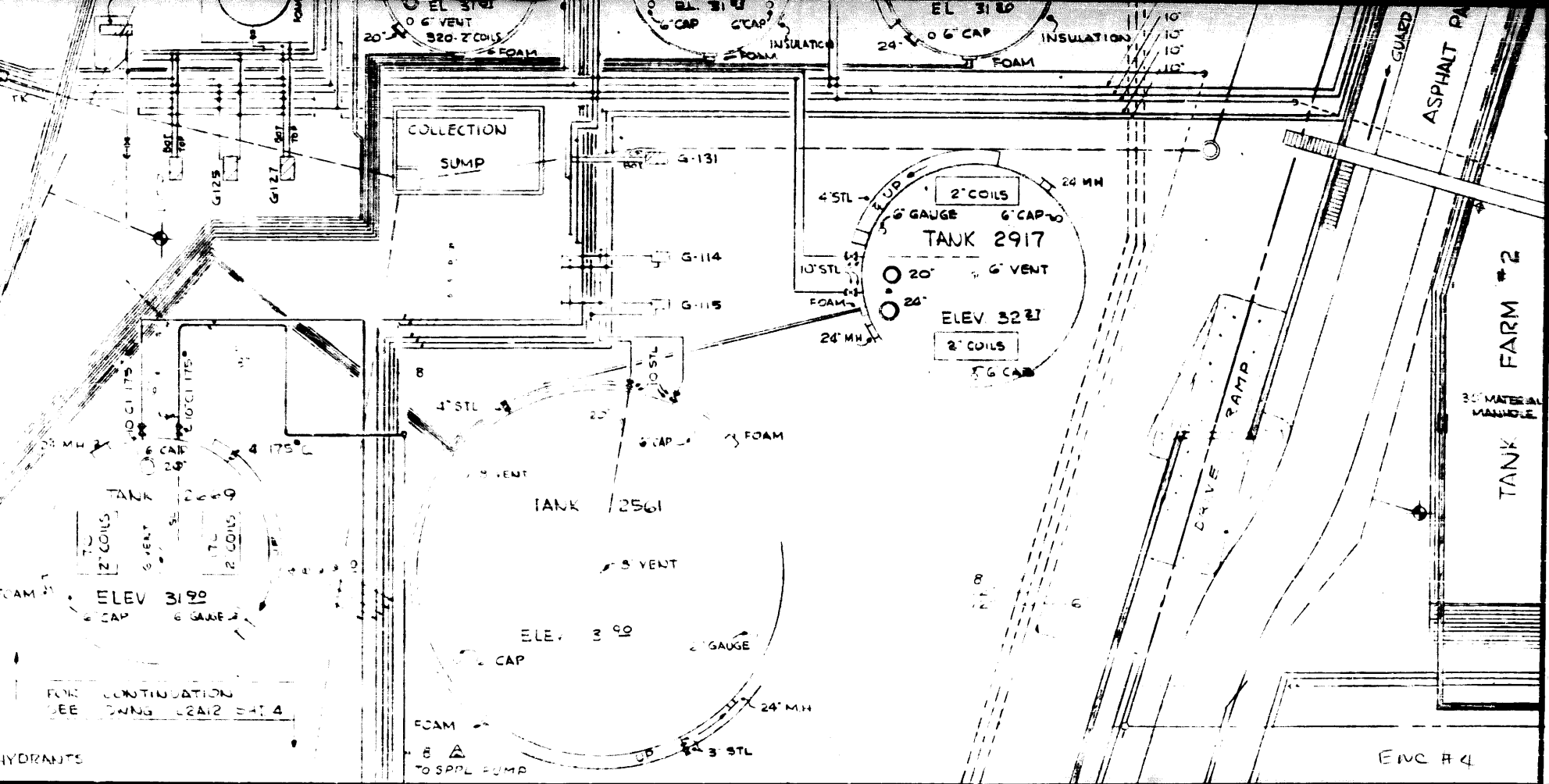
TANK 31

ELEV. 31.42

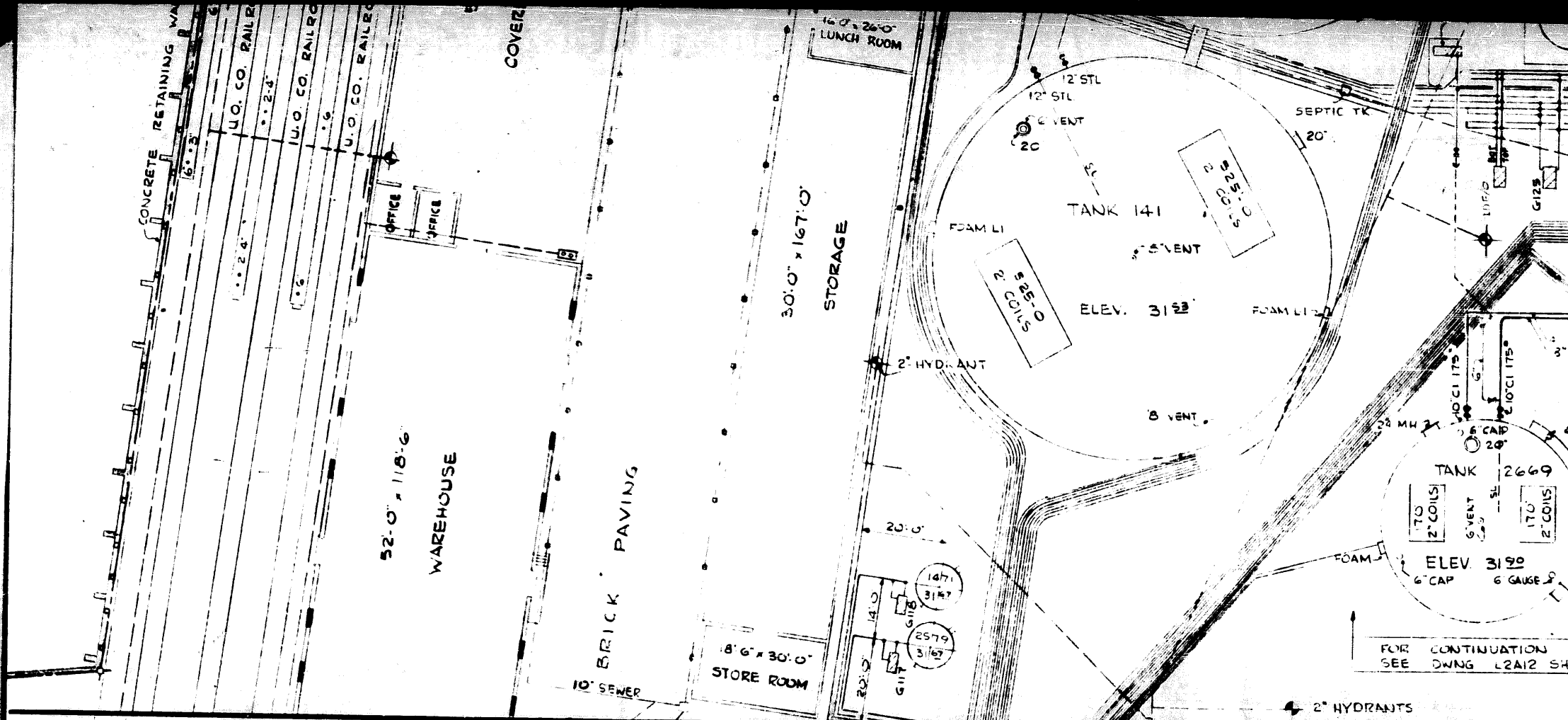
535'-0" 2" COILS

TK 36 170 22015





<b>REVISED</b> AS OF SEPT 956 RETRACED & REVISED TO COMPLETE AS BUILT ADDED SPPL PUMP & PIPING + IMPOUND WALL, ETC. DAL	DESTROY ALL PRINTS BEARING EARLIER DATE REV BY: FHK CHK BY: RM H RB	<b>APPROVED FOR CONSTRUCTION</b> A F E DATE SIGNED	DRAWN BY: D.H. CHECKED BY: TRACED BY: TRAC & CHK:	<b>PORTLAND MARKETING TERMINAL</b> <b>NEW FACIL. FOR O.B.M.F. (PROJ. 2-12-64)</b> <b>NEW PUMP &amp; PIPING - TANK FARM NO. 1</b>
APP'D: APP'D: SCALE: 1" = 20'-0" DATE: 10-29-64	APP'D: APP'D: SCALE: 1" = 20'-0" DATE: 10-29-64	APP'D: APP'D: SCALE: 1" = 20'-0" DATE: 10-29-64	APP'D: APP'D: SCALE: 1" = 20'-0" DATE: 10-29-64	



REFERENCE DRAWINGS

NUMBER	SH.

*W. C. Hemmick*

REV. NO.	DATE	REVISED
9-24-56	AS OF SEPT 1956	
⚠ B-28-61		RETRACED & REVISED TO COM
⚠ 5-17-64		ADDED SPPL PUMP & PIPING

3" STEEL PLUG-CHECK VALVE, PLUGAROO FIG. 275, SERIES 15, WITH INLET STRAINER & CAP (BUCKEYE #872)

4" PIPE SLEEVE THROUGH WALL SEAL W/ OAKUM AROUND 3"

3" LUBE OIL RECEIVING LINE

20' ROOF M.H. - 2" WATERDRAW - 6" VALVE W/ RELIEF - 3" VALVE

NEW 1 1/2" CONN. TO FOAM HEADERS TO MATCH EXISTING INCL. VALVES

STEEL WALK  
20" SHELL MANHOLE

FOAM CHAMBER  
2 - 1 1/2" FOAM LINES

NEW 20,000 GAL. TANK FOR OBMF

4" VALVE  
4" TO MIXING NOZZLE  
4" VALVE W/ RELIEF  
4" FROM PUMP DISCH. - G-103 & G-101

6" PUMP SUCTION TO G-101

EXIST. FOAM LINES

EXIST. 1 1/2" FOAM HYDRANTS  
EXIST. 6" FOAM HEADERS

P.L. PUMP

EXIST. 8" UCT.

REG. 76  
76- COMM  
ROYAL

NEW P.S.  
NEW 4"  
NEW 6"

TANK # 3410  
CHANGE COMMODITY FROM REG. 76 - TO AVGAS

TANK # 3411  
P.A. FUEL

EXIST. 6"  
EXIST. 6"

SEE SHEET 4 FOR PIPING CHANGE DETAILS

EXIST. 4"-76 COMM TO LDG. RACK CHANGE TO OBMF

EXIST. 4"-76 COMM. TO LDG. RACK CHANGE TO AVGAS

REMOVE 4" LOOP  
REMOVE 6"

BOTTOM OF PIPE ELEV. TO BE SAME AS S.P.L. LINES.

TK. # 2983

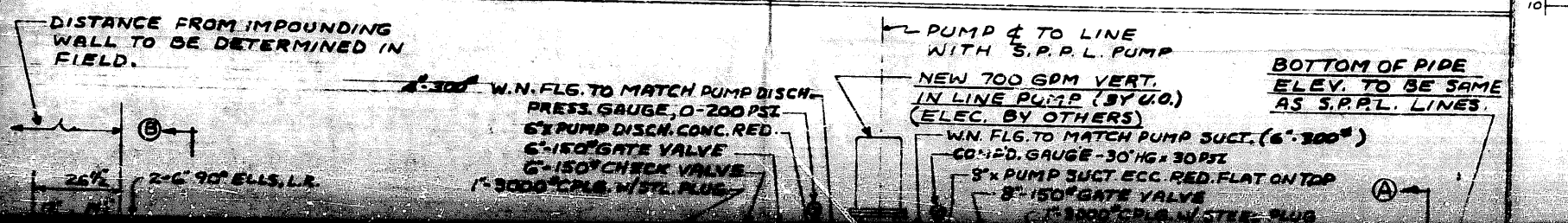
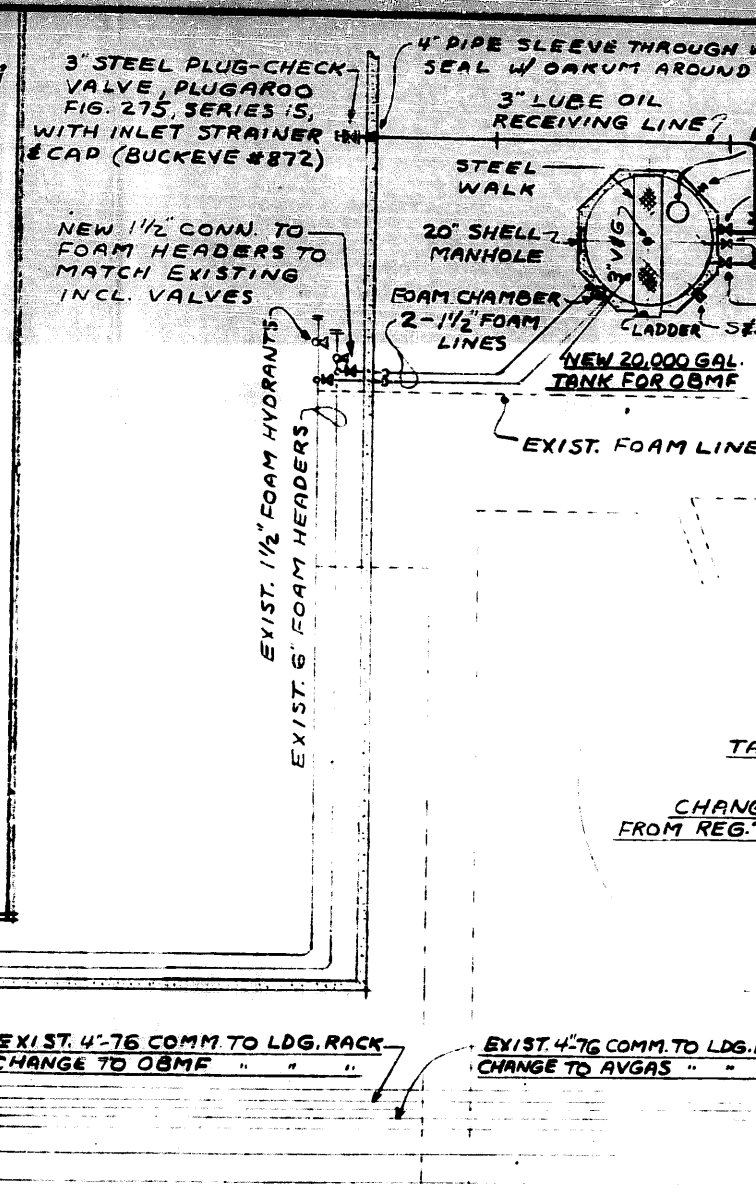
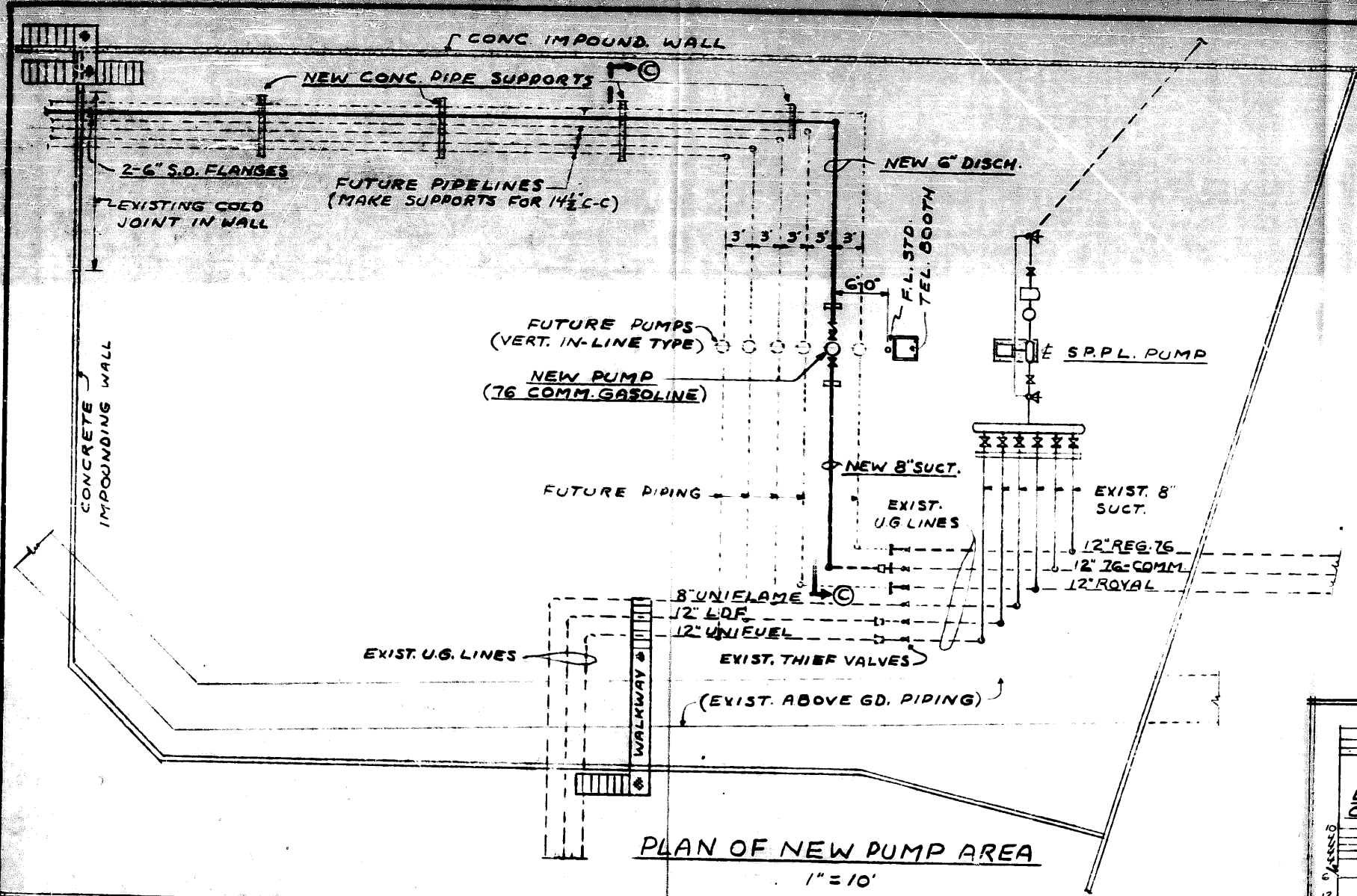
EXIST. FOAM LINES

NEW CONN.

EXIST. PUMPS

6" P.A.F. TANKER LINE (TO TK. # 3411) EXTEND & CONN. TO 6" TO TK. # 3410

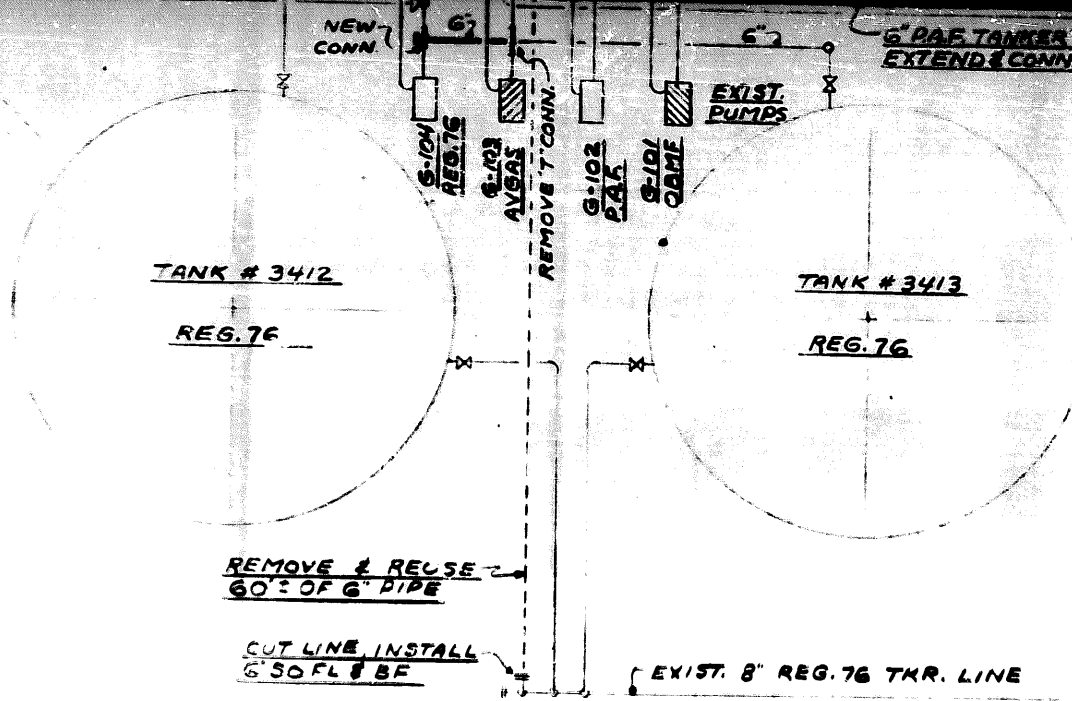
ONTOP  
PLUS



K # 2783

EXIST. FOAM LINES

G FROM TK 3409



REMOVE & REUSE  
6" 7G COMM. SUCT.

REMOVE & REUSE  
60' OF 6" PIPE

CUT LINE INSTALL  
6" 50 FL & BF

EXIST. 8" REG. 76 TKR. LINE

INSTALL 8" BF

INSTALL  
8" BF

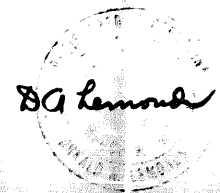
EXIST. 12" U.G. 7

EXIST. 12" SUCTION FROM  
TK. # 3408 (76 COMM)

TO NEW PUMP &  
TO SPPL PUMP  
(SEE DWG. L2A12.3H.4)

GENERAL PLAN  
NEW OUTBOARD MOTOR FUEL TANK  
W PIPING REMOVALS AND MANIFOLD  
S AT PUMPS G-101, G-102, G-103 & G-104

1" = 10'



PROJECT # 2-12-64  
INSTALL FACIL. FOR OUTBD. MOT. FUEL  
PORTLAND TERMINAL

CONTRACTOR	CONTR. JOB NO
	ENC #5

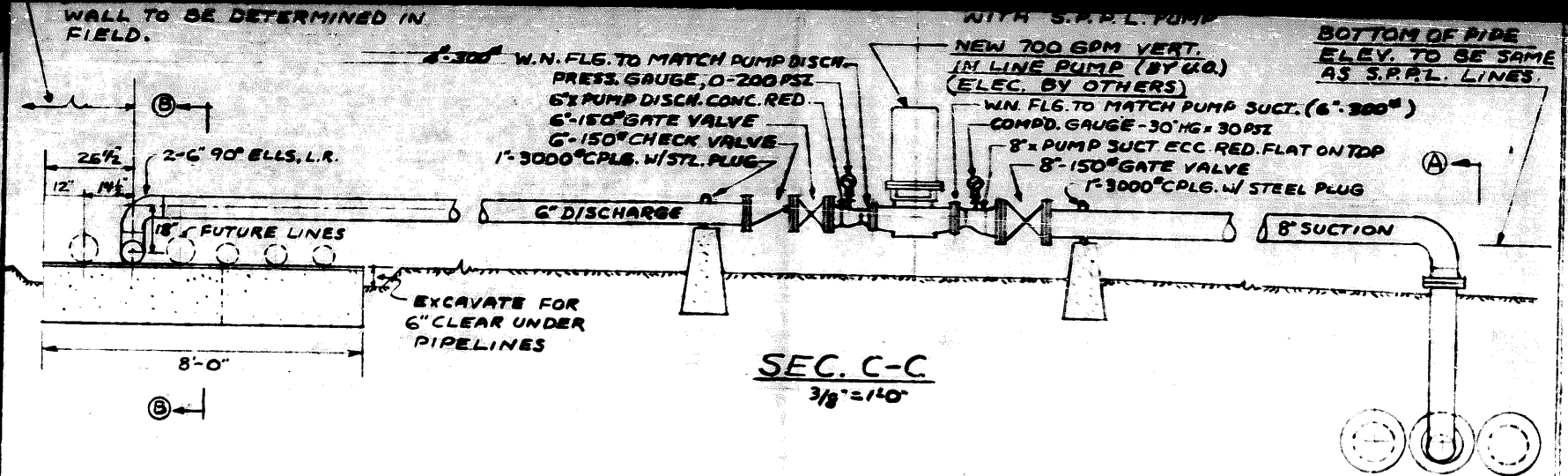
REVISED	DESTROY ALL PRINTS BEARING EARLIER DATE	REV. BY	CHKD. BY	APP'D BY

APPROVED FOR CONSTRUCTION		
A. P. E.	DATE	SIGNED

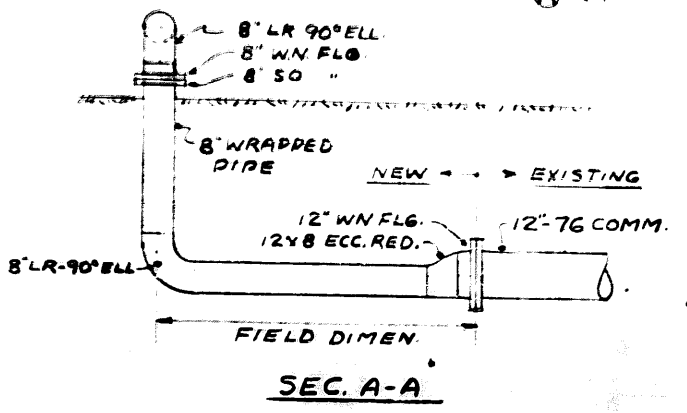
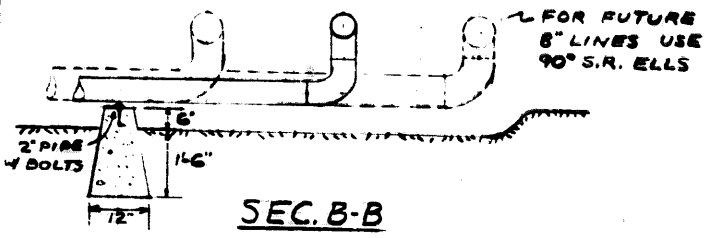
DRAWN BY DAL  
 CHECKED BY  
 TRACED BY  
 TRAC'D. CHK  
 APP'D  
 APP'D  
 SCALE  
 DATE 10-20-64

NEW O.B.M.F. TANK & PIPING  
MANIFOLD CHANGES-EXIST. PUMPS  
PLAN & DETAILS-NEW 76 COMM. PUMP

UNION OIL COMPANY OF CALIFORNIA LOS ANGELES, CALIF.	DRAWING NO. <b>L-2-12-64</b>
---	---------------------------------



**SEC. C-C**  
3/8" = 1'-0"



**GENERAL PLAN**  
SHOWING NEW OUTBOARD MOTOR FUEL  
WITH NEW PIPING, REMOVALS, AND  
CHANGES AT PUMPS G-10L, G-10R

1" = 10'

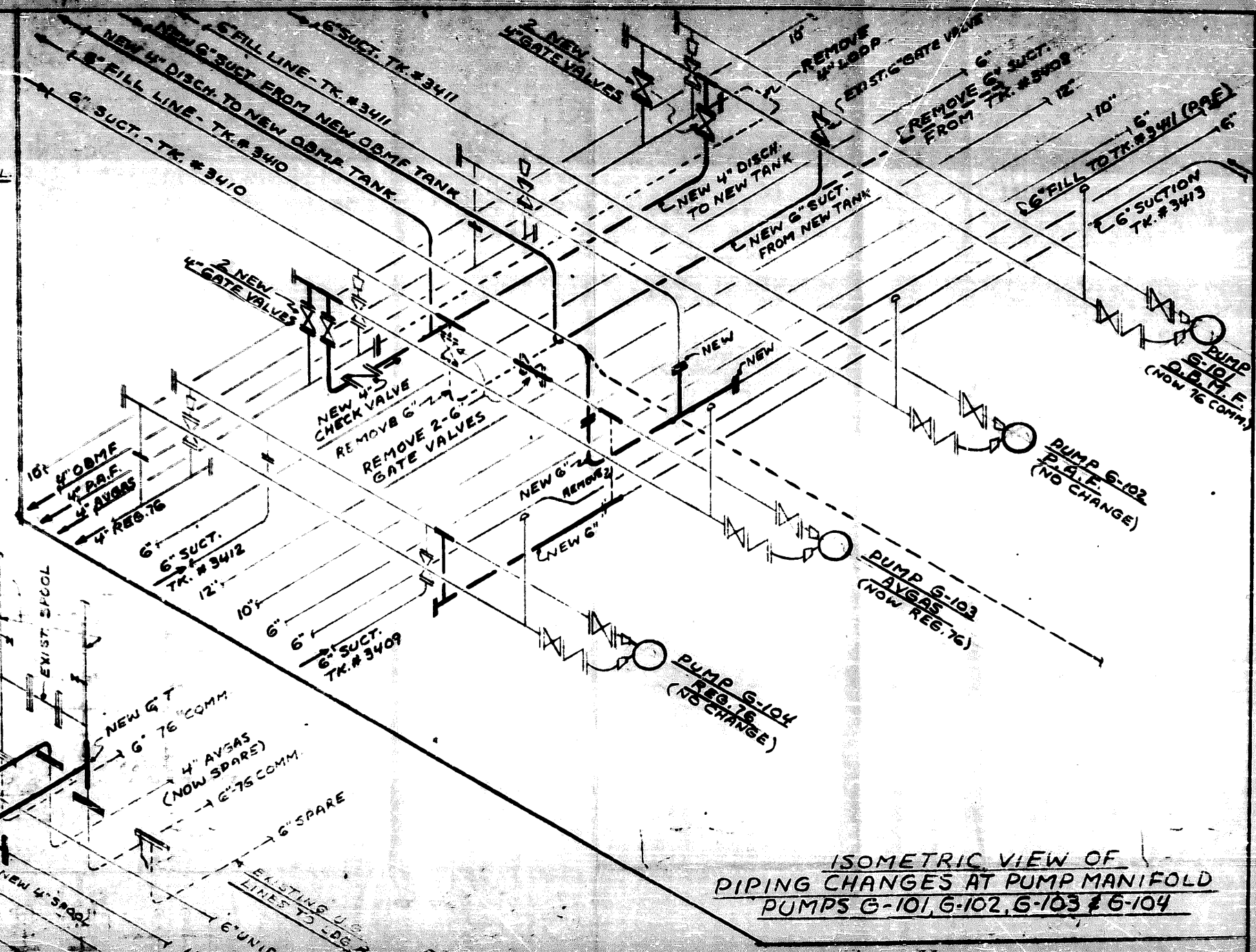
NUMBER	OR.	REFERENCE DRAWINGS

REV. NO.	DATE	REVISED	RE

DESTROY ALL PRINTS BEARING EARLIER DATE

REVISE EXIST.  
 6" AIR CUSHION INCL.  
 NEW 6" TEE  
 INSTALL  
 NEW 4" B.F.

6" UNIFUEL  
 4" O.B.M.F. (NOW 76 COMM)  
 4" P.A.F.  
 4" AVGAS (NOW 76 COMM)  
 4" NEGATE W  
 6" ROYAL 76  
 6" REG 76  
 4" SOLV.  
 4" REAC. LINE  
 3" UNIFLAME  
 6" UNIFUEL  
 6" O.B.  
 6" AIRMAN  
 6" 76 COMM FROM  
 NEW PUMP



ISOMETRIC VIEW OF  
 PIPING CHANGES AT PUMP MANIFOLD  
 PUMPS G-101, G-102, G-103 & G-104



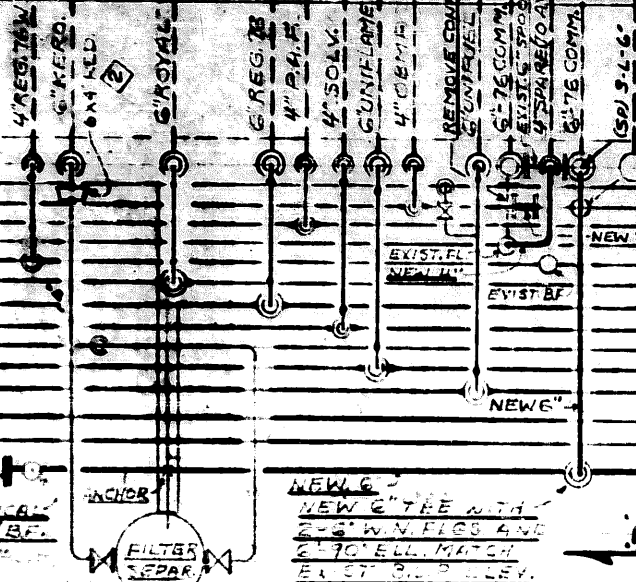
FOR CONTINUATION SEE DWG. FRC285 SR22

2 RACK  
392'-0"

15' 3'-0" 5'-0" 13'-0" 13'-0" 2'-3/8" 13'-0" 2'-1/8"

CONCRETE  
FIREWALL

NOTE  
USE NO. 4  
WELD EYES  
MATCH TO  
501T ANGLES



REVISE EXIST.  
6\" AIR CUSHION INCL.  
NEW 6\" TEE

INSTALL  
NEW 4\" B.F.

- 6\" UNIFUEL
- 4\" OBMF (NOW 76 COMM)
- 4\" P.A.F.
- 4\" AVGAS (NOW 76 COMM)
- 4\" REG. 76 W.
- 6\" ROYAL 76
- 6\" REG. 76
- 4\" SOLV.
- 4\" KEROSENE
- 6\" UNIFLAME
- 6\" UNIFUEL
- 6\" FO
- 6\" AIRMALT
- 6\" 76 COMM FROM NEW PUMP

26'-8\"  
22'-0\"

GASOLINES

STOVE & DIESEL  
SOLV. & KERO

NOTE  
FOR EACH  
VALVE TO EXIST.  
LINES TO BE  
REMOVED  
TO BE  
REMOVED



EXIST. 76 COMM LINE BECOMES AVGAS

G-123 GAS & SOLVENT TRVNL3 ONLY

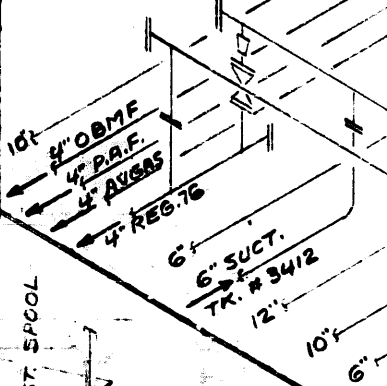
TRUCK UNLOADING

G-124 DOMESTIC OILS TRVNL3 ONLY

4'-0\"

5\" FILL LI  
NEW 4\" DISCH. TO NEW  
6\" FILL LINE - TR. # 3410

2 NEW  
4\" GATE VALVE



EXIST. 6\"  
AIR CUSHIONS

CUT LINE  
NEW 4\" OBMF  
REMOVE 4\"

NEW 4\"

EXIST. SPOOL

NEW 6\"

6\" 76 COMM

4\" AVGAS (NOW SPARE)

6\" 76 COMM

4\" 5.0 & B.F.  
SADDLE TO G  
6\" 5.0 & B.F.

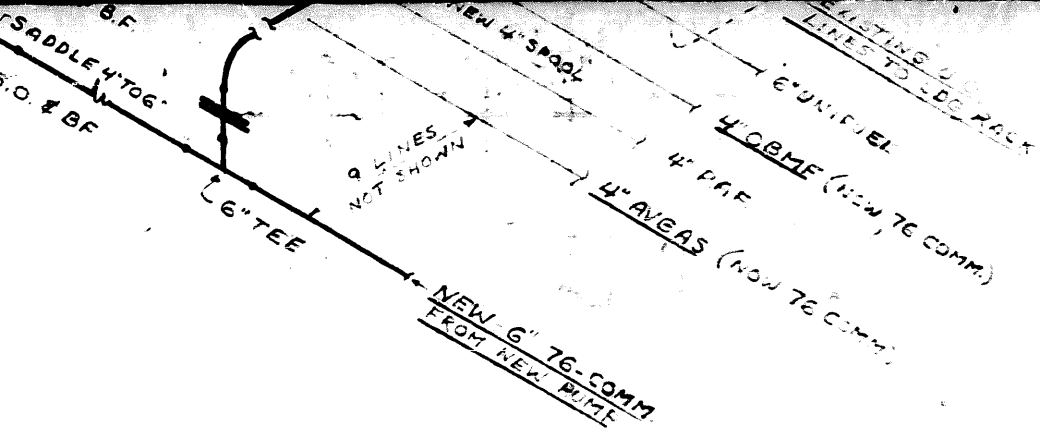
NEW 6\"

NEW 4\" SADD.

EXIST.  
LINES

6\" UNIFUEL

PIPING CHANGES AT PUMP MANIFOLD  
PUMPS G-101, G-102, G-103 & G-104



ISOMETRIC VIEW OF PIPING  
CHANGES AT LOADING RACK  
MANIFOLD

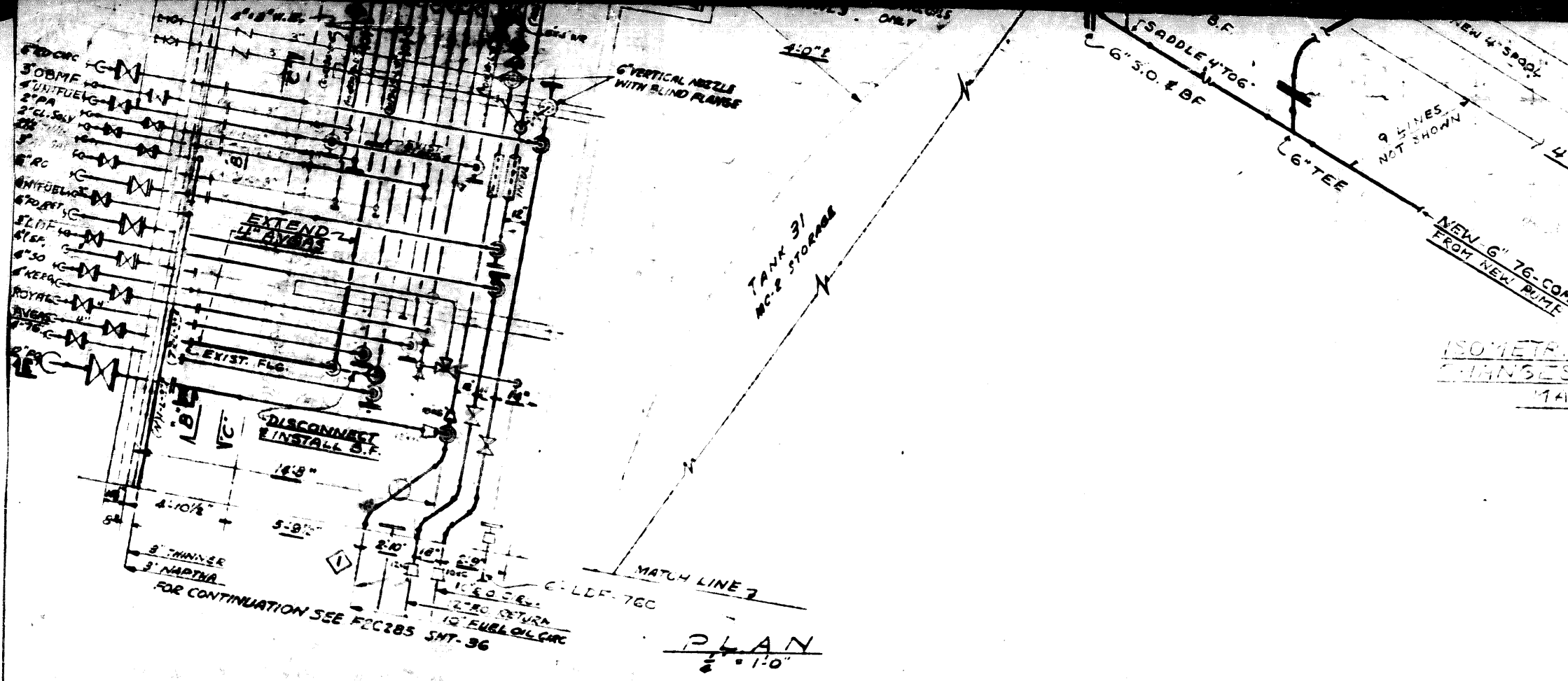
PROJECT # 2-12-64  
INSTALL FACILITIES FOR  
OUTBOARD MOTOR FUEL  
PORTLAND TERMINAL  
 ENC #6

NO.	REVISION	DATE	BY	APP'D	APPROVED FOR CONSTRUCTION
1	ISSUED FOR APPROVAL		G. PHILLIPS		
2	APPROVED FOR APPROVAL		W.S. BROWN		
3	REMOVED PLUS WAVE FROM PUMP LINES WITH L-5		W.S. BROWN		
4	CHANGED PUMP G-104 FROM 2 INCH TO 1 1/2 INCH		W.S. BROWN		
5	CHANGED PUMP G-104 FROM 2 INCH TO 1 1/2 INCH		W.S. BROWN		
6	CHANGED PUMP G-104 FROM 2 INCH TO 1 1/2 INCH		W.S. BROWN		
7	CHANGED PUMP G-104 FROM 2 INCH TO 1 1/2 INCH		W.S. BROWN		
8	CHANGED PUMP G-104 FROM 2 INCH TO 1 1/2 INCH		W.S. BROWN		
9	CHANGED PUMP G-104 FROM 2 INCH TO 1 1/2 INCH		W.S. BROWN		
10	CHANGED PUMP G-104 FROM 2 INCH TO 1 1/2 INCH		W.S. BROWN		

PIPING CHANGES AT  
PUMP MANIFOLD,  
MANIF. TO TRUCK LDG. RACK,  
MANIF. TO T.C. RACK & BBL. FILL'G.

UNION OIL COMPANY  
 OF CALIFORNIA  
 LOS ANGELES, CAL.

DRAWING NO. L-2-12-64  
 SHEET 5 OF 4



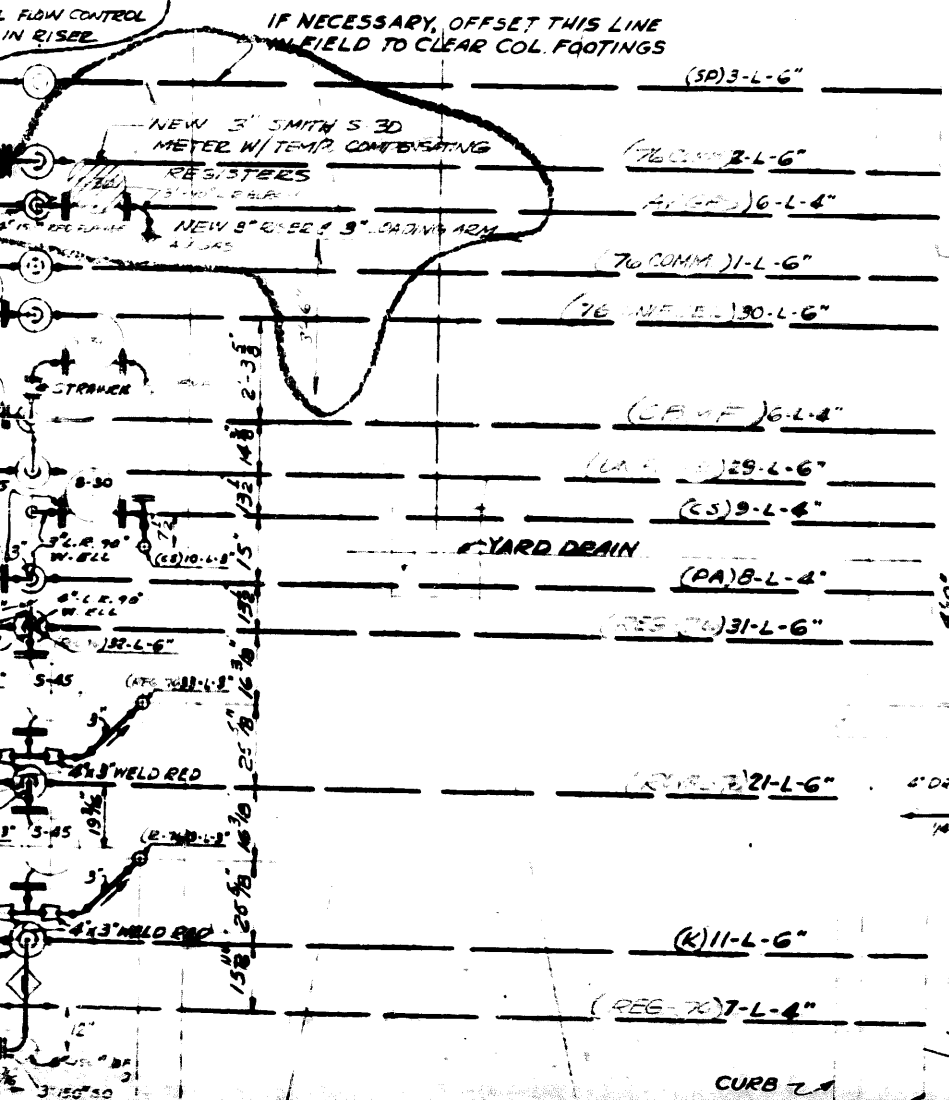
FOR CONTINUATION SEE FCC285 SMT-36

PLAN  
1/8" = 1'-0"

REFERENCE DRAWINGS			
NO.	DATE	BY	CHKD.

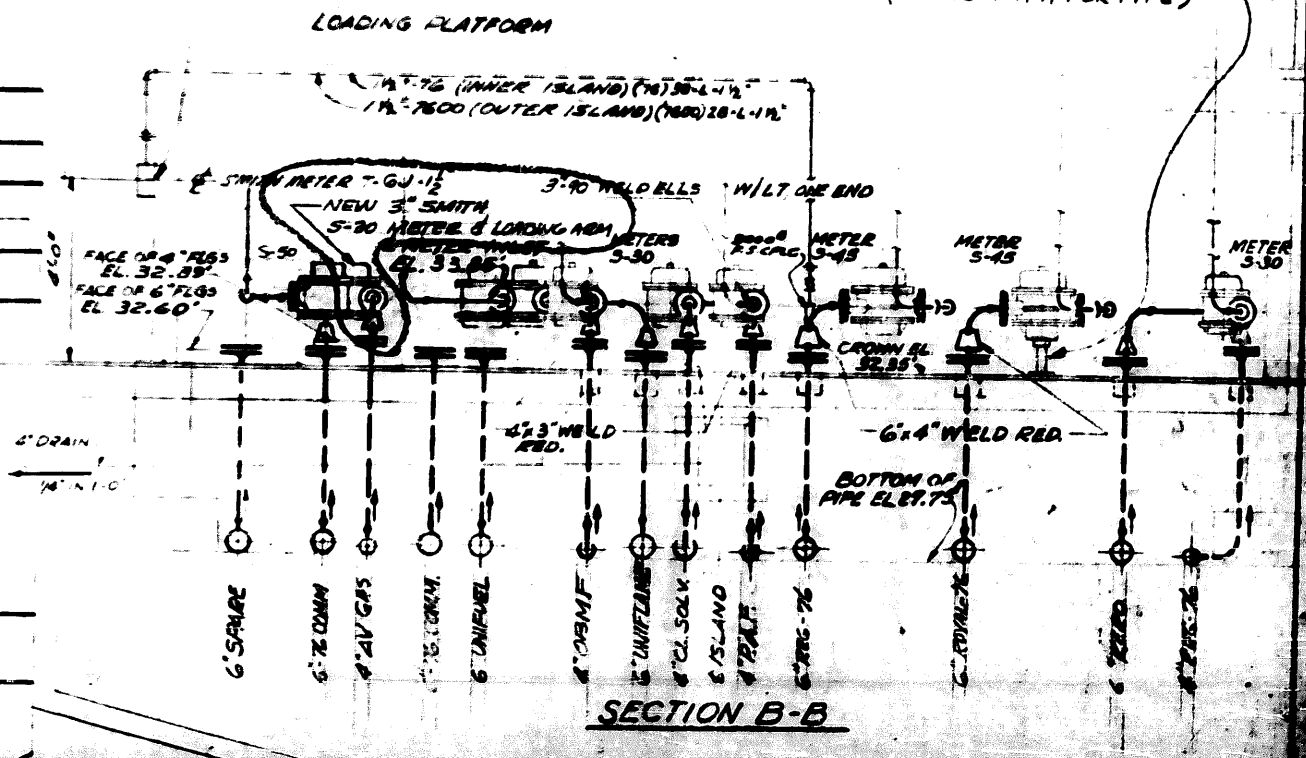
NO.	REVISION
1	ISSUED FOR APPROVAL
2	ISSUED FOR CONSTRUCTION
3	ISSUED FOR CONSTRUCTION
4	ISSUED FOR CONSTRUCTION
5	ISSUED FOR CONSTRUCTION
6	ISSUED FOR CONSTRUCTION
7	ISSUED FOR CONSTRUCTION
8	ISSUED FOR CONSTRUCTION
9	ISSUED FOR CONSTRUCTION
10	ISSUED FOR CONSTRUCTION

STAIRS UP



**NOTE:**  
 METERS TO BE INSTALLED ON INNER & OUTER RACK AS SHOWN. FOR DETAILS OF FILLING HOSE & NOZZLE FOR BOTH RACKS SEE DWG. F2C2AS SH. 3A.

**NOTE:-**  
 SUPPORT ALL METERS PER DETAIL ON DWG. F2C2AS SH. 29. (SEE ELEV. A-A' FOR TYPE)



STAIRS UP

STAIRS UP

AIR & WATER HOSE REEL (ICE HOSE REEL CO. CAT. NO. 601N 1944). HOLE SHOULD BE DUG 4" DEEPER THAN REEL BOX. FILL WITH GRAVEL FOR BASE SO COVER WILL BE 1/2" HIGHER THAN SLAB UNDER STAIRS. CONNECT TO NEAREST AIR & WATER SYSTEM USED FOR THAT PURPOSE AS DETERMINED IN FIELD. USE 3/4" WATER & 1/2" AIR LINES. CONNECT ELECTRICAL HEATER TO LIGHTING CIRCUITS ON STAIRS.

B

2'-0"  
COLUMN

DOWN SPOUT

INSTALL FLOW CONTROL VALVE IN RISE

IF NECESSARY, OFFSET TO FIELD TO CLEAR COL. F

INSTALL FLOW CONTROL VALVE IN RISE

DOWN SPOUT  
INSTALL FLOW CONTROL VALVE IN RISE

6" SPARE

6" 76 COMMERCIAL

4" AIR GAS

6" 76 COMMERCIAL

6" 76 IN FUEL

6" UNIFLAME

YARD DRAINS

6" REG-76

6" ROYAL-76

6" KERO

4" REG-76

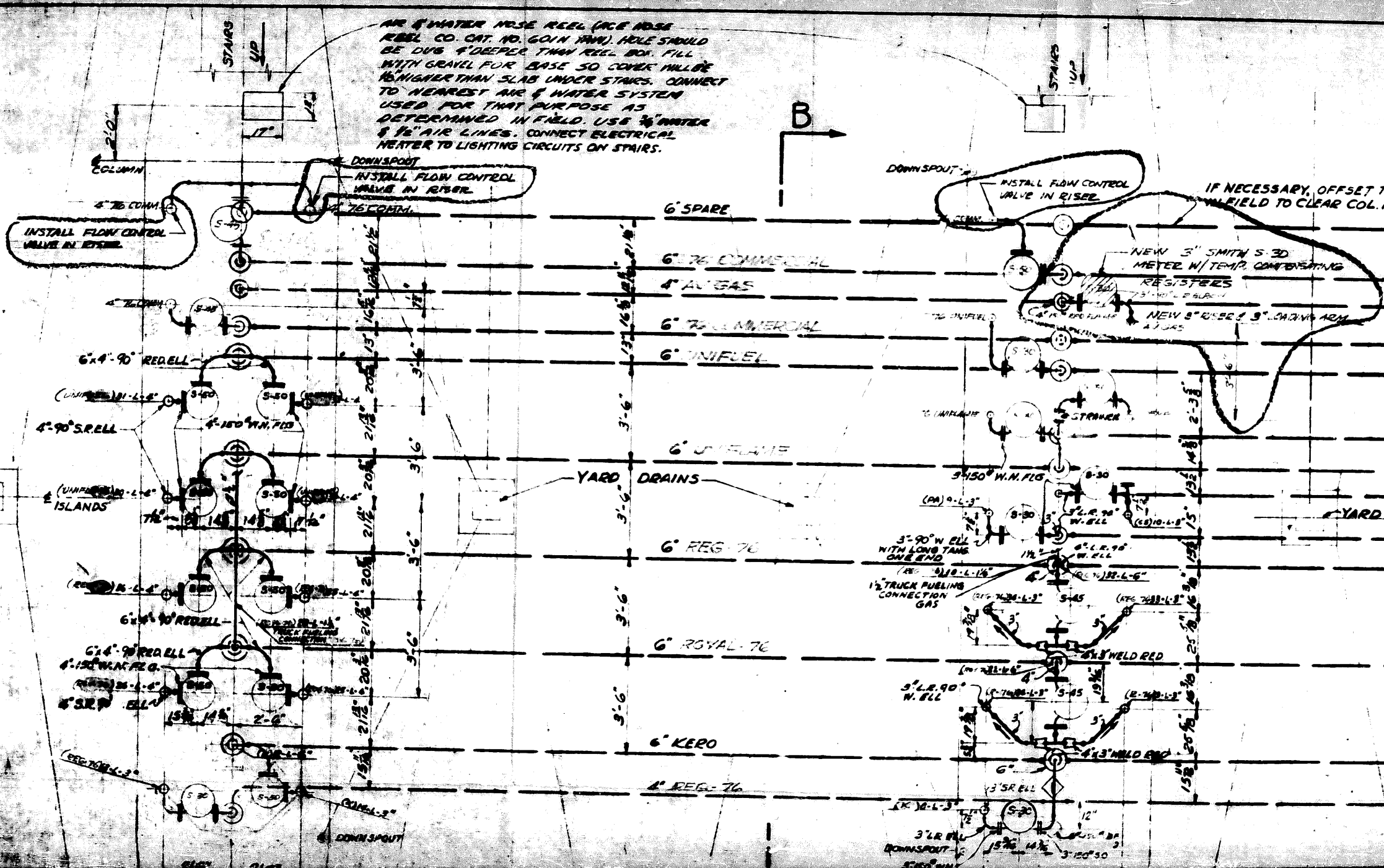
NEW 3" SMITH S-30 METER W/ TEMP. COMPENSATING REGISTERS  
NEW 3" RISE & 3" LEADING ARM  
A 1 GAS

3"-90" W. ELL WITH LONG TANG ONE END  
1/2" TRUCK PUBLISHING CONNECTION GAS

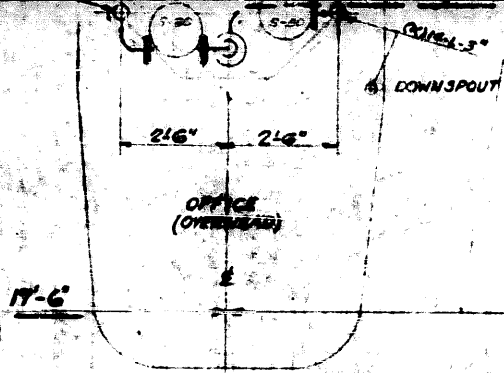
6" 3" WELD RED  
6" 3" WELD RED

3" 2R ELL  
DOWN SPOUT  
3" 2R ELL

N. 31° E. 107'

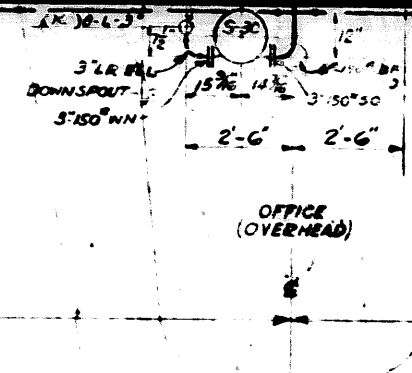




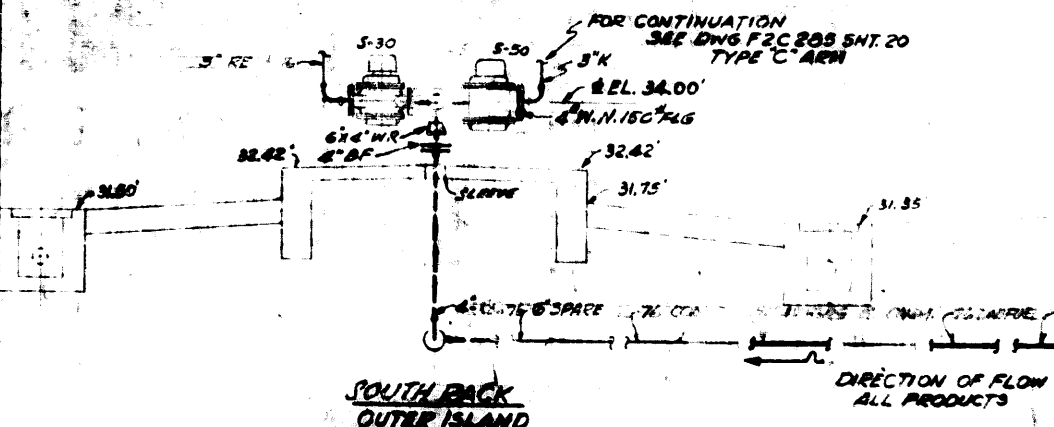


**PLAN**  
SCALE 3/8"=1'-0"

29'-6"



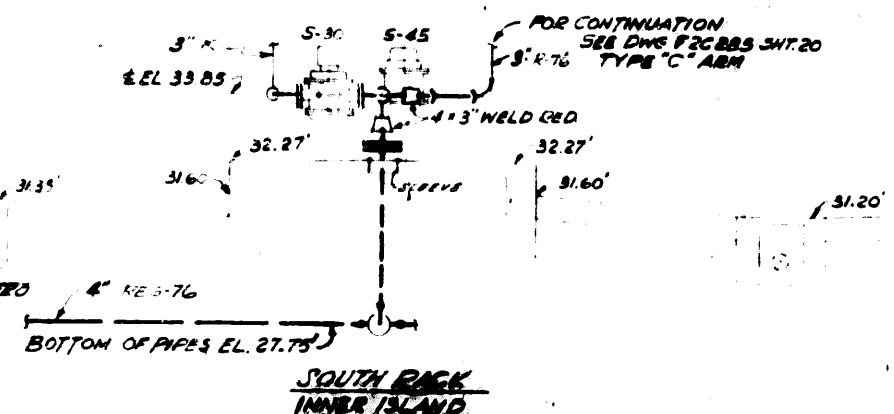
DIRECTION OF FLOW  
ALL PRODUCTS



**SOUTH BACK  
OUTER ISLAND**

- 1- USE SUPPORT MK-2 FOR S-30 METERS
- 2- USE SUPPORT MK-4 FOR S-45/S-50 METERS

**ELEVATION A-A**  
SCALE 3/8"=1'-0"



**SOUTH BACK  
INNER ISLAND**

- 1- USE SUPPORT MK-2 FOR S-30 METERS
- 2- USE SUPPORT MK-4 FOR S-45 METERS

**REFERENCE DRAWING**

**REFERENCE DRAWING**

NUMBER	SHEET	TITLE	DATE
21	23	PIPING PLAN DETAILS	
22		PIPE HANGING DETAIL	
23	30	PIPE HANGING DETAIL	
24		PIPE HANGING DETAIL	
25		PIPE HANGING DETAIL	
26		PIPE HANGING DETAIL	
27		PIPE HANGING DETAIL	
28		PIPE HANGING DETAIL	
29		PIPE HANGING DETAIL	
30		PIPE HANGING DETAIL	

212-64

7-18-64

Calculations For Impounding Basin  
Capacity Tank Farm # 2, Union Oil Co  
Marketing Terminal, Portland Oregon

1. Capacity required by Portland Rule

110% of the capacity of the largest tank  
(tank 2915) 84,670 barrels plus volume  
displaced of the remaining tanks.

Tank No.	Capacity	Diam.	Height
2915	84,670 Bar.	120'-0"	42'-0"
2916	40,880	78'-0"	48'-0"
2982	11,400	48'-0"	36'-0"
2983	7,510	36'-0"	42'-0"
3407	80,575	120'-0"	42'-0"
3408	45,325	90'-0"	40'-0"
3409	27,400	70'-0"	40'-0"
3410	7,195	35'-0"	42'-0"
3411	7,195	35'-0"	42'-0"
3412	7,195	35'-0"	42'-0"
3413	7,195	35'-0"	42'-0"
New Tank	480	10'-9"	30'-0"
<b>TOTAL</b>	<b>327,020 BAR</b>		

$$\therefore \text{Capacity Required} = (1.10)(84,670) + \left(\frac{12}{48}\right)(40,880) +$$

$$\left(\frac{12}{36}\right)(11,400) + \left(\frac{12}{42}\right)(7,510) + \left(\frac{12}{42}\right)(80,575) +$$

Note: 12' is average  
impounding wall  
height.

$$\left(\frac{12}{40}\right)(45,325) + \frac{12}{40}(27,400) +$$

$$\left(\frac{12}{42}\right)(4)(7,195) + \frac{12}{30}(480)$$

$$= 93,000 + 10,220 + 3,500 + 2150$$

$$+ 23,100 + 13,600 + 8,220 + 8,230$$

$$+ 192$$

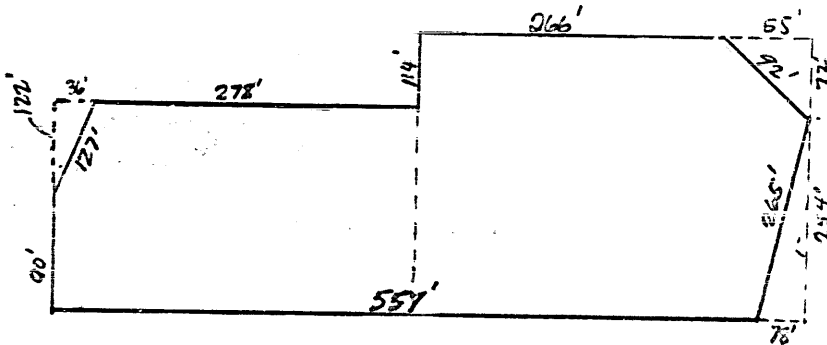


Required Capacity of Impounding Wall = 162,512 Barrels



## 2. Actual Capacity of Impounding Basin

$$\text{Capacity} = \frac{(\text{Area inside wall}) (\text{Height of wall})}{(5.62 \text{ cu ft/ft})}$$



Tank Form #2. (Not to scale)

$$\begin{aligned} \therefore \text{Area} &= (90+122)\left(\frac{36+278}{2}\right) - \frac{(122)(36)}{2} + (266+55)\left(\frac{254+72}{2}\right) - \frac{(55)(72)}{2} \\ &= (212)\left(\frac{314}{2}\right) - \frac{(122)(36)}{2} + (321)\left(\frac{326}{2}\right) - \frac{(55)(72)}{2} \\ &\quad - \frac{(254)(72)}{2} \end{aligned}$$



$$\begin{array}{r} 104,800 \\ 66,500 \\ \hline 171,300 \\ -14,076 \\ \hline 157,324 \end{array}$$

$$= 66,500 - 2,196 + 104,800 - 1,980 - 9,900$$

$$\text{Area} = 171,300 - 14,076 = 157,324 \text{ sq ft.}$$

$$\begin{array}{r} 1980 \\ 9900 \\ 2196 \\ \hline 14076 \end{array}$$

$$\therefore \text{Capacity} = \frac{(\text{Area})(\text{Height})}{(5.62)}$$

$$\text{Capacity of Impounding Wall} = \frac{(157,324)(12)}{(5.62)} = \underline{336,000 \text{ P.S.G.}}$$

The capacity of the existing impounding basin is therefore 207% of that now required.

# Union Oil Company of California

2901 WESTERN AVENUE



SEATTLE, WASHINGTON 98111

February 4, 1965

City Council  
City of Portland  
State of Oregon

Subject: Increased Gasoline Storage  
Union Oil Company of California

Gentlemen:

By means of this letter the Union Oil Company of California makes application for a City Council Permit to increase its bulk gasoline storage facilities at its Portland Marketing Terminal. This Permit is required under the terms of Section 1b-1409 of the Portland Fire Code. Emergency action is requested of the Council on this application due to our Company's immediate need for these facilities.

The proposed construction will consist of one (1) 20,000 gallon, vertical, welded steel aboveground storage tank, with attendant steel piping, walkways, pump, etc. The tanks will be constructed at the Company's existing petroleum storage terminal located at 5500 N. W. Doane Street. The tank will be located within the confines of an existing tank farm with concrete dikes of legal capacity. All design and construction will be in compliance with applicable City of Portland and related building codes.

Attached is a \$100 check, payable to the City Treasurer, to cover the necessary storage permit fees. Also enclosed are general and detailed plot plans giving property descriptions, dike impounding data, computations, etc.

The Fire Marshall's office has already been advised of the proposed development and preliminary drawings have been furnished to them. Through a carbon copy of this letter we are furnishing them with a set of final construction drawings and dike capacity computations. Union Oil Company will be represented during construction by the engineering firm of Ryan & Haworth Company, 20519 - 60th Avenue W., Lynnwood, Washington, who are licensed for Oregon work.

It is requested this permit application be expedited wherever possible.

Thank you.

Yours very truly,

R. H. Grocock  
Regional Engineer

RHG/fk  
Enclosure

RECEIVED  
FEB 5 9 31 AM '65  
PAY SHIPMENT DIRECTOR  
CITY OF PORTLAND, ORE.  
YES

## ORDINANCE NO. 119957

An Ordinance granting a revocable permit to the Union Oil Company of California, to increase its gasoline storage facilities at its Portland terminal at 5500 N.W. Doane Street, by the installation of one (1) 20,000 gallon aboveground storage tank, under certain terms and conditions, and declaring an emergency.

The City of Portland ordains:

Section 1. The Council finds that on February 4, 1965, the Union Oil Company of California, by R. H. Gracock, Regional Engineer, applied for permission to increase its gasoline storage facilities at its Portland terminal at 5500 N.W. Doane Street by the installation of one (1) 20,000 gallon aboveground storage tank as shown on Union Oil Company of California Drawing No. L2C285, Rev. 3, Sheet 5; Drawing No. L2C-348, Sheet 4; Drawing No. L-2-12-64, Sheets 1 through 5, all of which were attached to the request for permit; that inspection has been made of said premises by the Bureau of Buildings and the Fire Marshal, and the Bureau of Buildings has recommended that the permit be granted pursuant to the recommendations of the Fire Marshal; that the report of the Fire Marshal, dated February 18, 1965, recommends that the installation be permitted, subject to the following conditions:

1. That the Company's Drawing No. L2C285, Rev. 3, Sheet 5; Drawing No. L2C-348, Sheet 4; Drawing No. L-2-12-64, Sheets 1 through 5; a total of 7 drawings in all; and Engineer Walter L. Carlson's tank farm (No. 2) impounding capacity calculations, dated September 18, 1964; and the Company permit application letter, dated February 4, 1965, shall be made a part of this permit.
2. That the tank shall be built in accordance with A.P.I. Standard No. 650, entitled "Welded Steel Tanks for Oil Storage," Second Edition, April 1, 1964, and shall bear the A.P.I. Monogram.
3. The tank shall not be used for the storage of combustible liquids having boil-over characteristics.
4. That all pipes, valves, and fittings shall be equal to the requirements of Chapter IV of the Flammable and Combustible Liquids Code, of Vol. 1 of the National Fire Codes, "Flammable Liquids," 1963-64 Edition (NFPA Pamphlet No. 30).

ORDINANCE No.

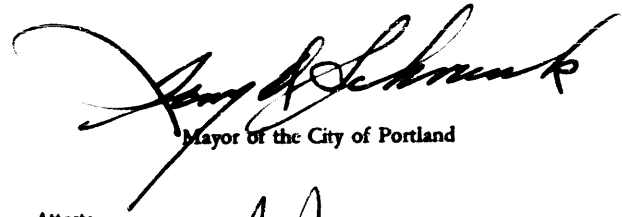
- 5. That all construction, including tank, tank pad pipe supports, pumps, and walkways shall be accomplished under permit from the Bureau of Buildings of the City of Portland and be in accordance with detailed drawings and specifications submitted to and approved by that Bureau;

now, therefore, a revocable permit hereby is granted to the Union Oil Company of California, by R. H. Gracock, Regional Engineer, to increase its gasoline storage facilities at its Portland terminal at 5500 N.W. Doane Street by the installation of one (1) 20,000 gallon aboveground storage tank, and said construction and maintenance shall be in strict compliance with the conditions recommended by the Fire Marshal set forth above in this ordinance.

Section 2. Nothing contained herein shall be deemed or taken to exempt said Union Oil Company of California from compliance with any other applicable provisions of the Portland Fire Code and other ordinances of the City of Portland, nor shall anything contained herein be taken or deemed to create any vested or property right and no expenditure of money, lapse of time or any act or thing shall prevent the Council from at any time revoking this permit and requiring full compliance with the applicable provisions of law, codes and ordinances of the City of Portland. This permit shall not become effective until such time as a suitable document approved as to form by the City Attorney shall have been signed and filed with the Auditor of the City of Portland by said Union Oil Company of California, which document shall accept and agree to the terms, provisions and conditions of this ordinance.

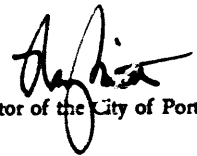
Section 3. Inasmuch as this ordinance is necessary for the immediate preservation of the public health, peace and safety of the City of Portland in this: In order that there be no unnecessary delay in increasing storage facilities for permittee; therefore, an emergency hereby is declared to exist and this ordinance shall be in force and effect from and after its passage by the Council.

Passed by the Council, MAR 4 - 1965



Mayor of the City of Portland

Attest:



Auditor of the City of Portland

Calendar No.

930

INTRODUCED BY  
Commissioner Earl

# ORDINANCE No. 119377

Title

An Ordinance granting a revocable permit to the Union Oil Company of California, to increase its gasoline storage facilities at its Portland terminal at 5500 N.W. Doane Street, by the installation of one (1) 20,000 gallon above-ground storage tank, under certain terms and conditions, and declaring an emergency.

THURSDAY

### THE COMMISSIONERS VOTED AS FOLLOWS:

	Yes	Nays
Bean	1	
Bowes	1	
Earl	1	
Grayson	1	
Schrunk	1	

### FOUR-FIFTHS CALENDAR

Bean	
Bowes	
Earl	
Grayson	
Schrunk	

Filed..... FEB 20 1965

**RAY SMITH**

Auditor of the CITY OF PORTLAND

By.....

Deputy

DRAWN BY  
MCR/EG  
Date February 26, 1965

NOTED BY THE COMMISSIONER

Affairs

Finance

Safety

Utilities

Works

City Attorney

NOTED FOR CITY AUDITOR

APPROVED

Date

By

City Engineer

Date

By