

PORTLAND PUBLIC SCHOOLS

501 N. Dixon Street / Portland, Oregon 97227

Mailing Address: P.O. Box 3107 / Portland, Oregon 97208-3107

Phone: (503) 916-3401 • FAX: (503) 916-3253

FACILITIES AND ASSET MANAGEMENT

Permit of Entry

Date: _____

In order to proceed with the planned project:

•Sidewalk, parking lot, and related improvements

Portland Public Schools grants to:

•City of Portland, Bureau of Transportation (Safe Routes to School Program) and its contractors and subcontractors

the right to enter upon the following described five real properties including the areas shown on the attached Exhibit A plans to perform work beneficial to the property as described above:

1. Capitol Hill School, 8401 SW 17th
2. Faubion School, 3039 NE Rosa Parks Blvd. (Portland Blvd.)
3. Forest Park School, 9935 NW Durrett
4. Kelly School, 9030 SE Cooper
5. Sunnyside School, 3421 SE Salmon

Subject to the following conditions:

1. Permit of Entry expires the earlier of _____, or project completion.
2. Grantee must submit for PPS review and approval construction schedules for each school including start dates and estimated completion dates a minimum of ten working days in advance of construction start. Access to the site shall be at the sole discretion of PPS and is subject to PPS specified conditions or limitations
3. Any access to the properties on days when school is in session, may be subject to additional requirements by PPS including but not limited to background checks or other security requirements for grantee personnel or agents accessing the property.
4. No materials, equipment, or construction activities shall be stored, take place, or otherwise impinge on PPS property outside of the area shown on Exhibit A.
5. The site to be restored to clean, orderly and safe condition, and all debris and equipment removed at the completion of the work, all to the satisfaction of PPS, and all at the Grantee's sole expense.
6. Reasonable safety precautions are to be taken during any on site activity to protect students, staff, and visitors to the site.

- 7. Subject to the conditions and limitations of the Oregon Constitution and the Oregon Tort Claims Act, City shall indemnify, defend, and hold harmless Grantor from any loss, claim, liability and costs arising out of the acts or omissions of City, it officers, employees, and agents under this permit.
- 8. City shall require its contractor to name Grantor as additional insured on the general contractor's insurance.
- 9. City shall require its contractor to indemnify, hold harmless and defend Grantor from and against all claims, suits, actions or whatsoever nature, damages or loses, and all expenses and costs incidental to the investigations and defense thereof, including reasonable attorney fees, resulting from or arising out of the contractor's activities under this permit..

For City of Portland, Bureau of Transportation:

Director or Designee _____ (date)

Approved as to form:

APPROVED AS TO FORM

City Attorney  CITY ATTORNEY

For PPS:

_____ (signature)

_____ (title) _____ (date)

184036

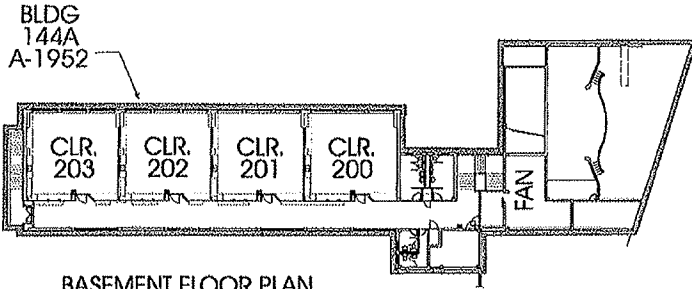
ROE: City of Portland: Sidewalk Improvements Five Schools
July 1 2010

Exhibit A

Portland Public Schools

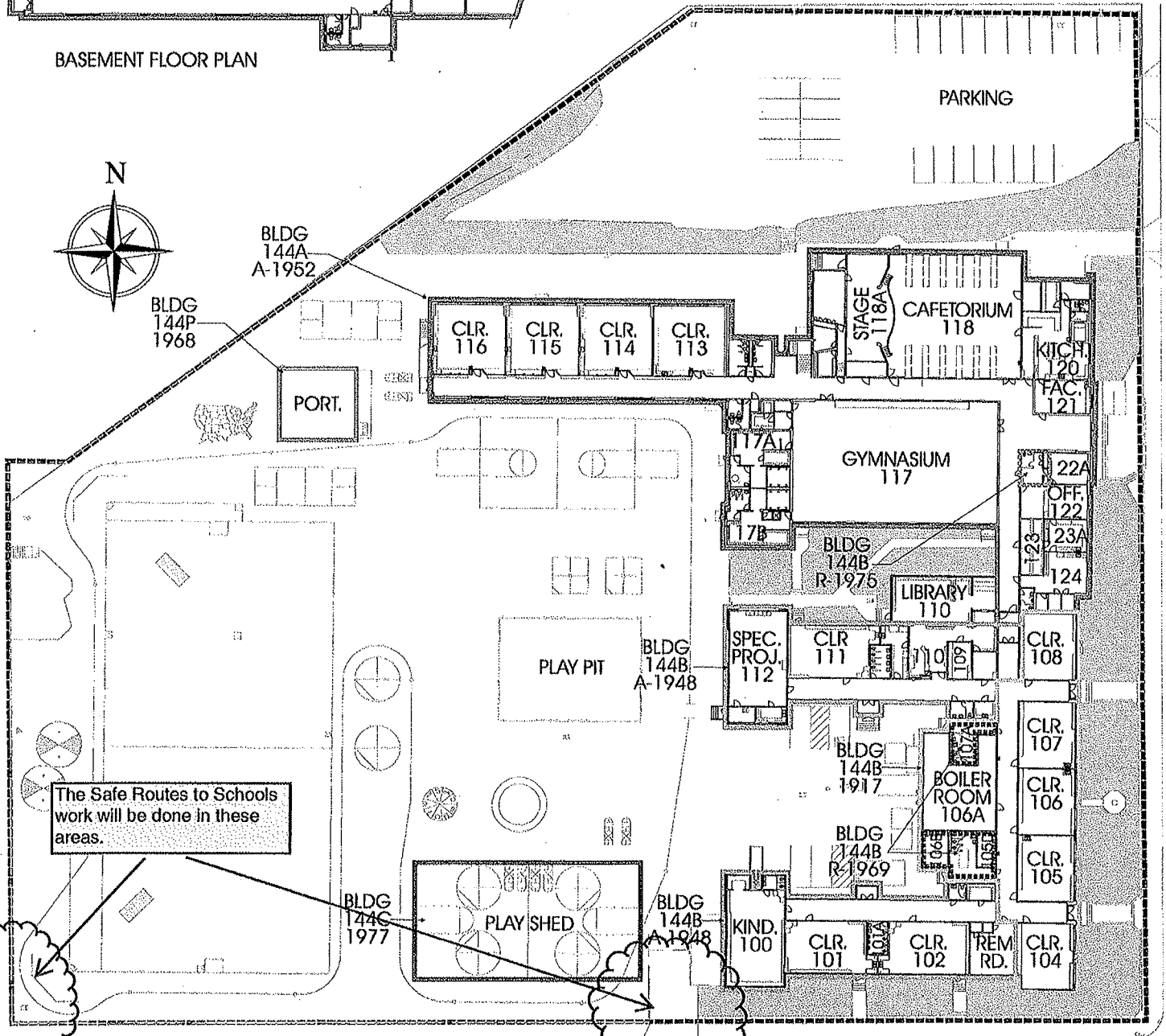
FACILITIES AND ASSET MANAGEMENT

Capitol Hill Elementary School
8401 SW 17th Street 97219
Facility Plan



BASEMENT FLOOR PLAN

TOTAL SF	46,241
ACRES	4.39
1/4 SECT.	3827

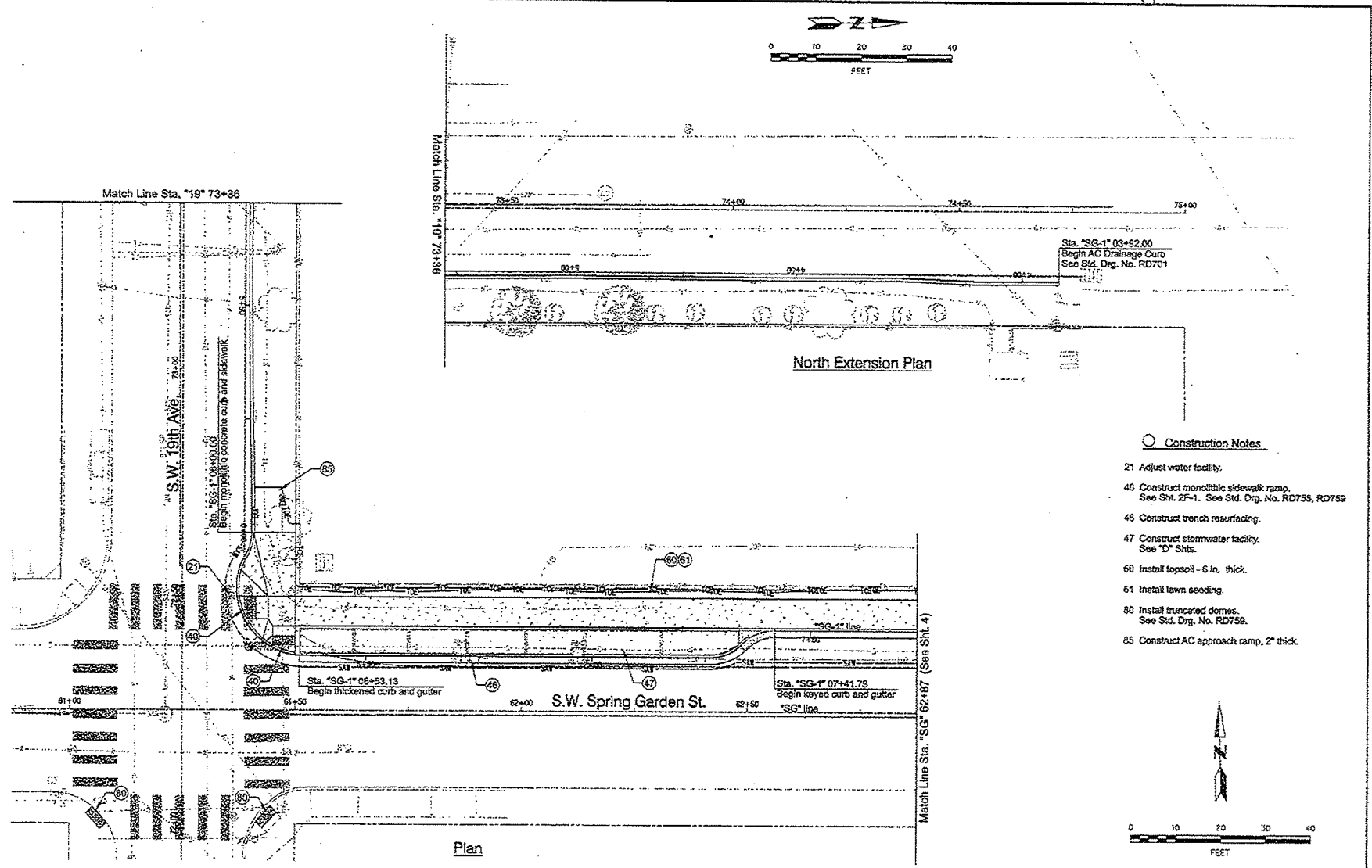
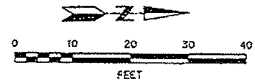


The Safe Routes to Schools work will be done in these areas.

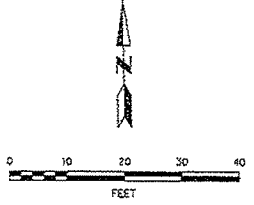
SITE / FIRST FLOOR PLAN

S.W. SPRING GARDEN STREET

Capital Hill



- Construction Notes
- 21 Adjust water facility.
 - 46 Construct monolithic sidewalk ramp.
See Sht. 2F-1. See Std. Drg. No. RD755, RD759
 - 46 Construct trench resurfacing.
 - 47 Construct stormwater facility.
See 'D' Shts.
 - 60 Install topsoil - 6 in. thick.
 - 61 Install lawn seeding.
 - 80 Install truncated domes.
See Std. Drg. No. RD759.
 - 85 Construct AC approach ramp, 2" thick.



Post Date 5/7/2000
 File Name: S:\J. Shephard\2003-2004\Borers to School\ADP\AN_SCH1515.DWG 03 STREET PLANNING_SHEP.DWG

WARNING
 0 1/2 1
 IF THIS BAR DOES NOT MEASURE, THEN DRAWING IS NOT TO SCALE.

Plan

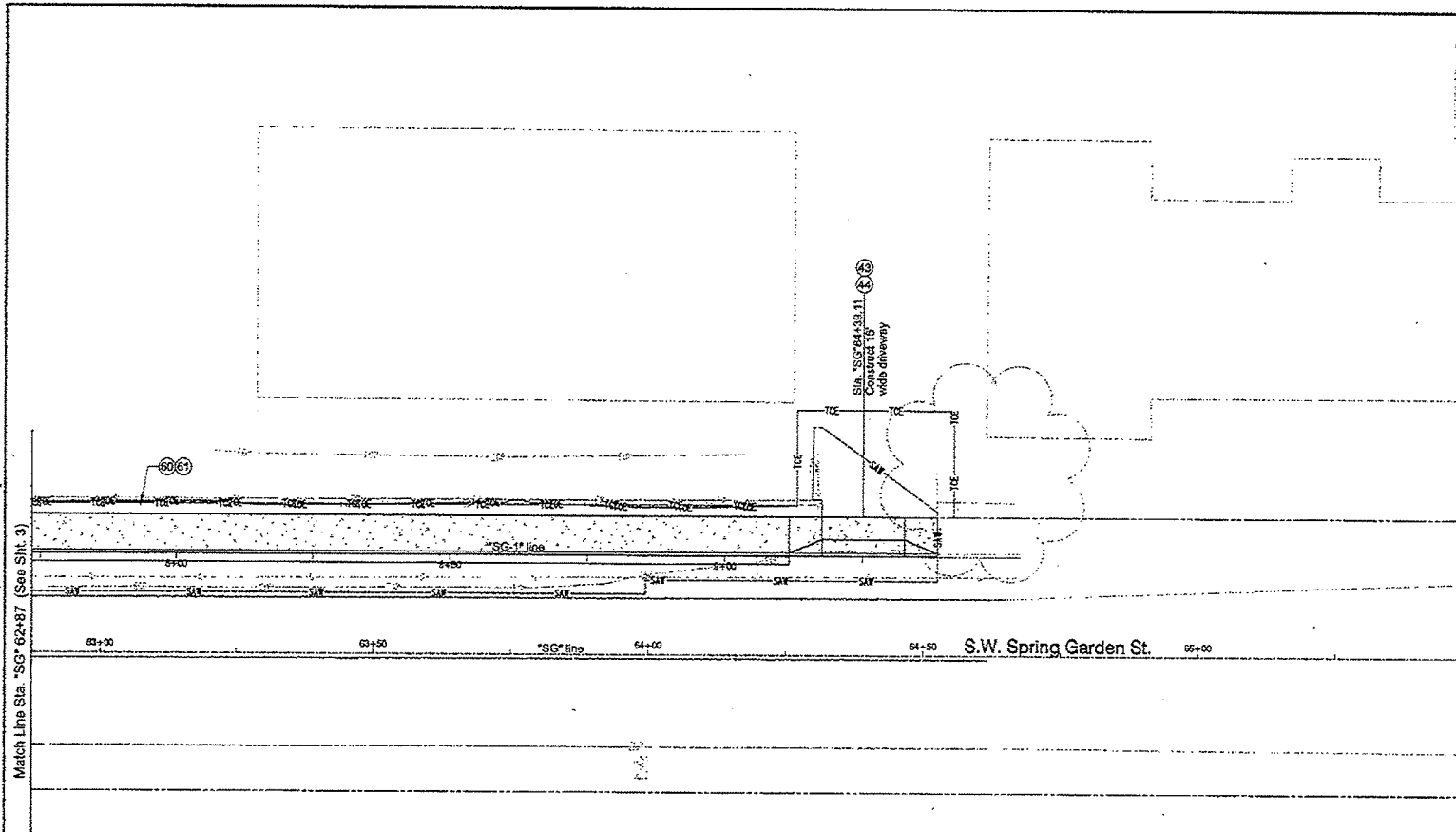
APPROVED BY J. Shepard DATE APPROVED May 2010		PROJECT NO. 700135			APPROVALS: REG. PROF. ENGR. NO. 10896C	 SAM ADAMS STEVE TOWNSEND, P.E. MAYOR CITY ENGINEER		SAFE ROUTES TO SCHOOL PORTLAND ELEMENTARY SCHOOLS MULTNOMAH COUNTY Street Plan Site No. 1A (Area D)	SHEET NO. 3
CHECKED BY D. Ramer J. Joe		DATE CHECKED S. Townsend 1/4 SECTION							

184036

Copy Top Hand

○ Construction Notes

- 43 Construct concrete driveway.
See Sht. 2F-1 and Std. Drg. No. RD745.
- 44 Construct AC, driveway connection.
See Std. Drg. No. P-536.
- 60 Install topsoil - 6 in. thick.
- 61 Install lawn seeding.



Plan Date: 6/27/2010
 File Name: 627200
 Filename: S:\Design\10005 - Safe Routes to School\04\PLAN\REVISED\STREET PLAN\PT. 2H.Dwg
 Match Line Sta. "SC" 62+87 (See Sht. 3)
 Match Line Sta. "SC-1" (See Sht. 3)

0 1/4 1
 IF THE BAR DOES NOT MEASURE THEN DRAWING IS NOT TO SCALE.

NO.	DATE	DESCRIPTION	APPR.

DESIGNED BY J. Shepard	DATE APPROVED May 2010
CHK BY D. Flamer	CHK. CHANGER S. Townson
PROJECT NO. 700135	PROJECT NUMBER X-SRTS-6900(195)
SCALE 1/4" = 1'-0"	DATE 6/27/2010



APPROVALS:
Steve Townson
 CITY ENGINEER
 REAL PROF. ENG. NO. 64550K

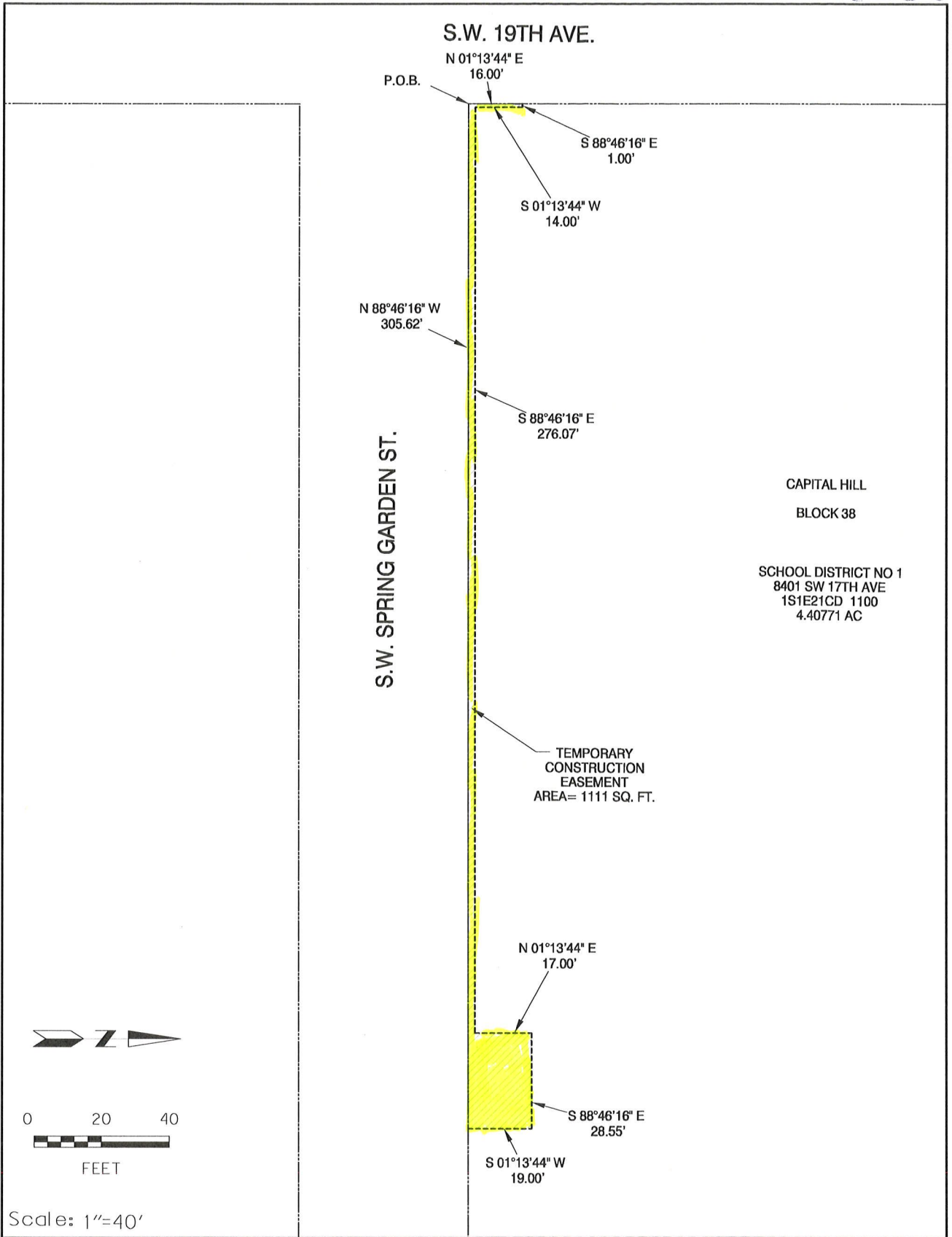


SAFE ROUTES TO SCHOOL
 PORTLAND ELEMENTARY SCHOOLS
 MULTNOMAH COUNTY
 Street Plan
 Site No. 1B
 (Area D)

SHEET NO.
4

184036

Plot Date: 2/8/2000 File: S:_Ill.Design\T00135- Safe Routes to School\CAD\RIGHT-OF-WAY DRAWINGS\PLAN_SHEETS\SRIT_01SE21CD_1100_1in=40ft.dgn



Scale: 1"=40'



SAM ADAMS
STEVE TOWNSH, P.E.

MAYOR
CITY ENGINEER

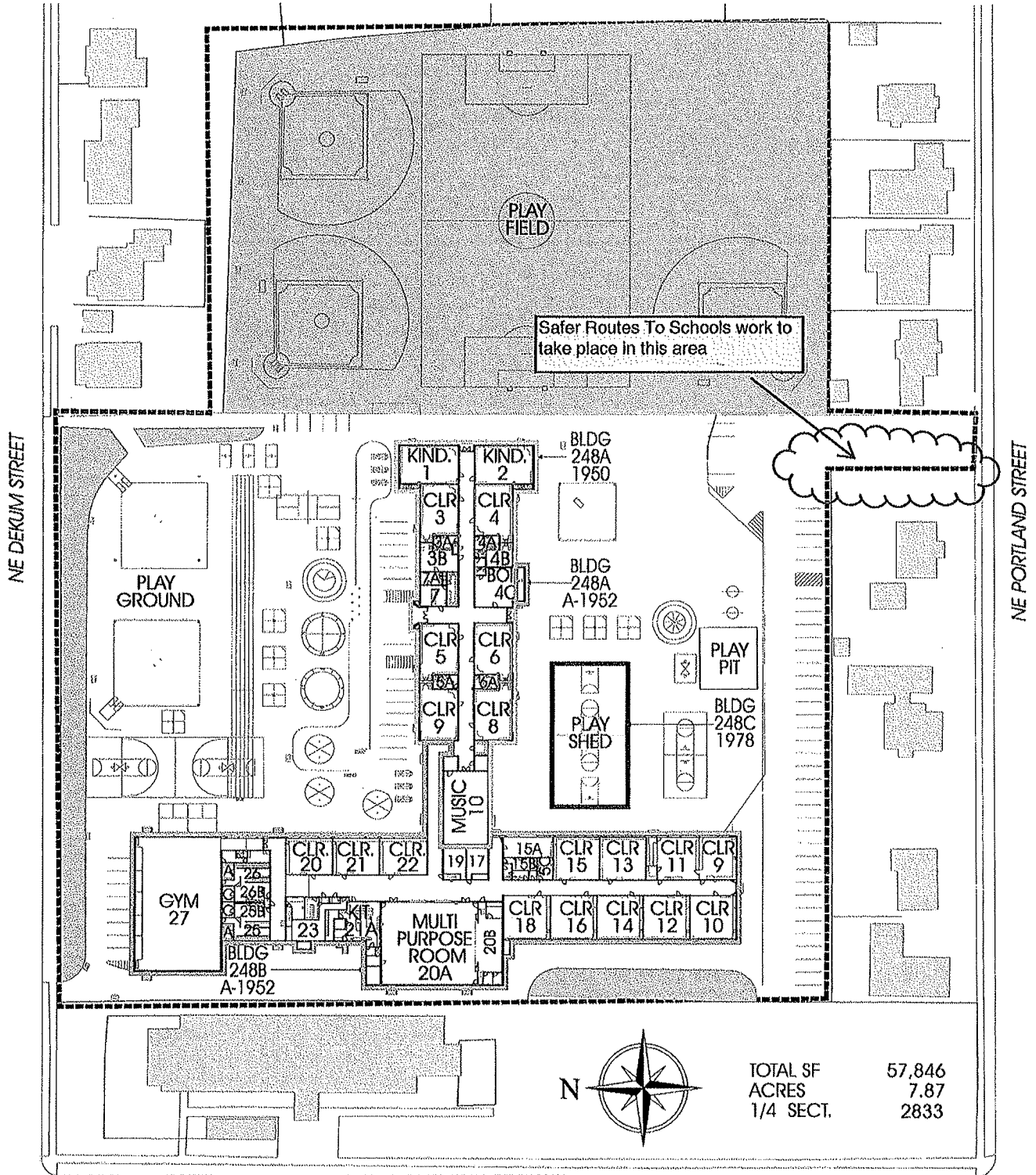
State I.D.

1S1E21CD 1100

Portland Public Schools

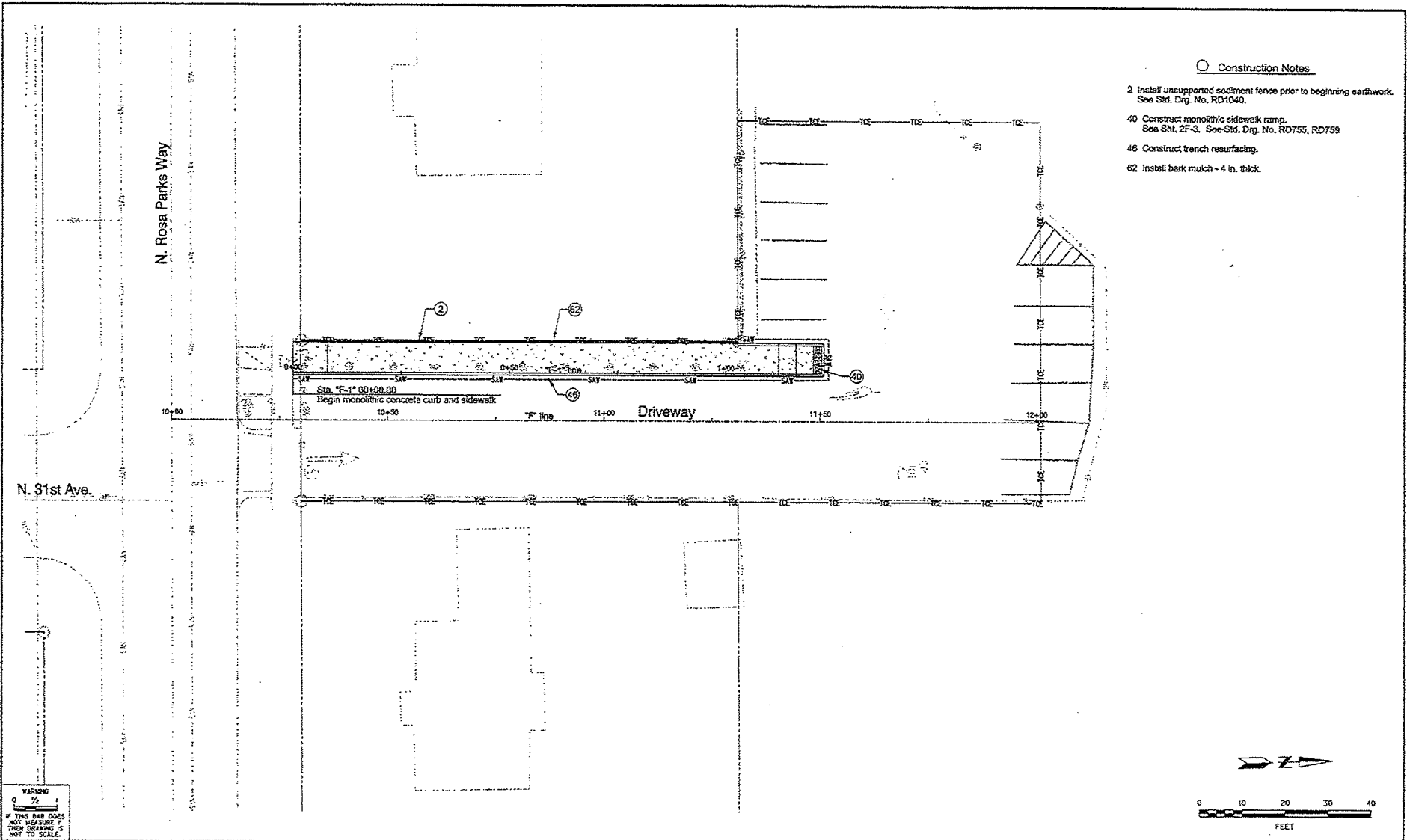
FACILITIES AND ASSET MANAGEMENT

Faubion Elementary School
 3039 NE Portland Blvd.
 Facility Plan



TOTAL SF	57,846
ACRES	7.87
1/4 SECT.	2833

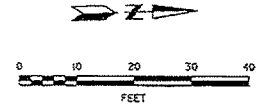
Fabian



- Construction Notes
- 2 Install unsupported sediment fence prior to beginning earthwork. See Std. Drg. No. RD1040.
 - 40 Construct monolithic sidewalk ramp. See Sht. 2F-3. See Std. Drg. No. RD755, RD759
 - 46 Construct trench resurfacing.
 - 62 Install bark mulch - 4 in. thick.

Plot Date: 5/27/2010 12:56:41 AM
 Plot Name: S:\Projects\100035_Safe Routes to School\DWG\PLAN-SHEETS\15-SHT OF STREET PLAN\01.SHE.DWG

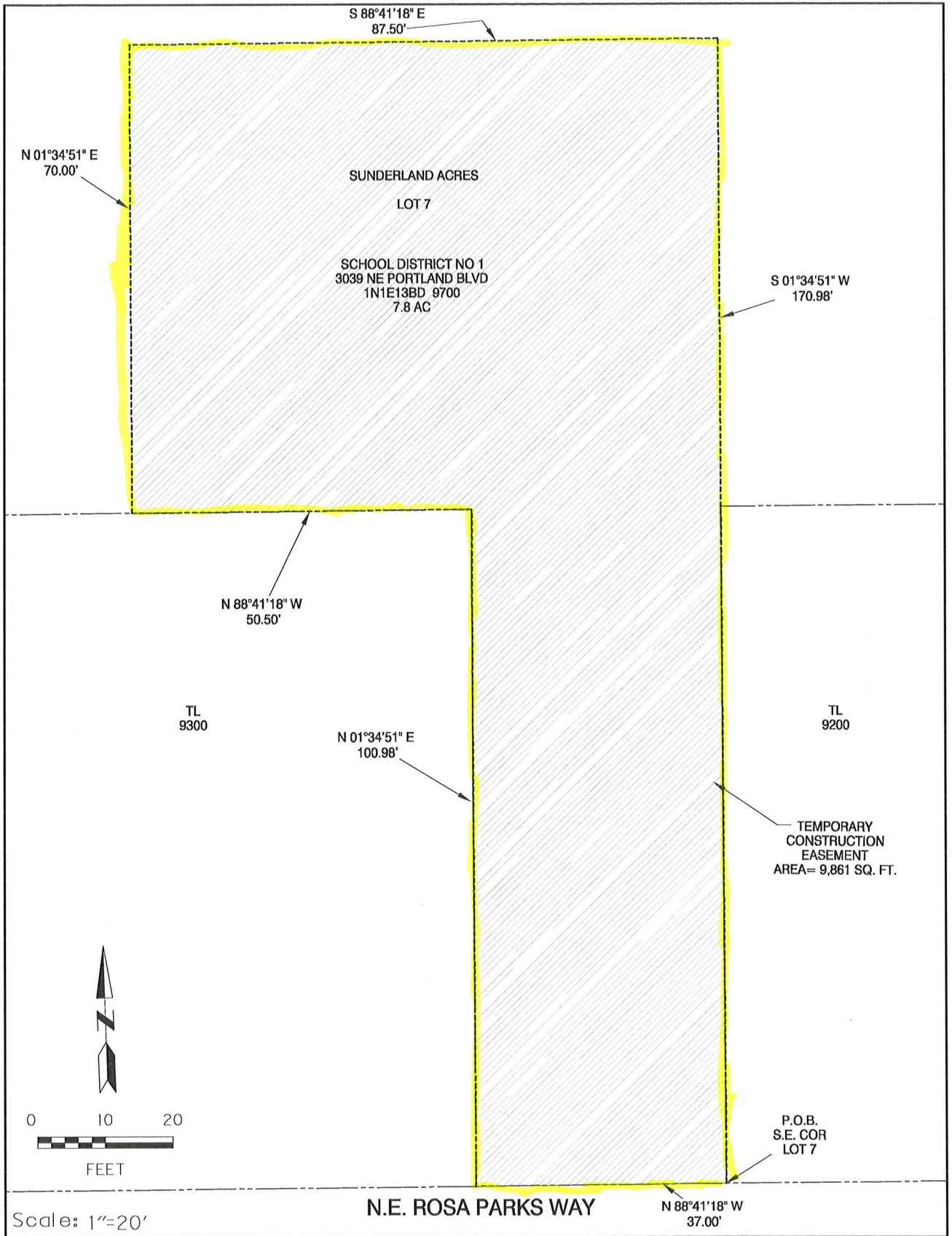
WARNING
 1/2" = 1'
 IF THE BAR DOES NOT MEASURE UP THEY DRAWING IS NOT TO SCALE



DESIGNED BY J. Shepard DATE APPROVED May 2010		DIV. ENGINEER S. Townsend PROJECT NO. T00125			APPROVALS: CITY ENGINEER		 SAKADAKIS STEVE TOWNSEND, P.E. MAYOR CITY ENGINEER	SAFE ROUTES TO SCHOOL PORTLAND ELEMENTARY SCHOOLS MULTNOMAH COUNTY Street Plan Site No. 4 (Area B)		SHEET NO. 7
CHECKED BY J. Joo		PROJECT NUMBER X-SRTS-5906(195)			REG. PROF. ENGR. NO. 145546			REG. PROF. ENGR. NO. 513492		

184036

Plot Date: 2/9/2010 File Name: S:_IL\Design\T0035- Safe Routes to School\CAD\RIGHT-OF-WAY DRAWINGS\PLAN SHEETS\SHT_04-INE13BD_9700_1in=20ft.dgn



Scale: 1"=20'



SAM ADAMS
STEVE TOWNSEN, P.E.

MAYOR
CITY ENGINEER

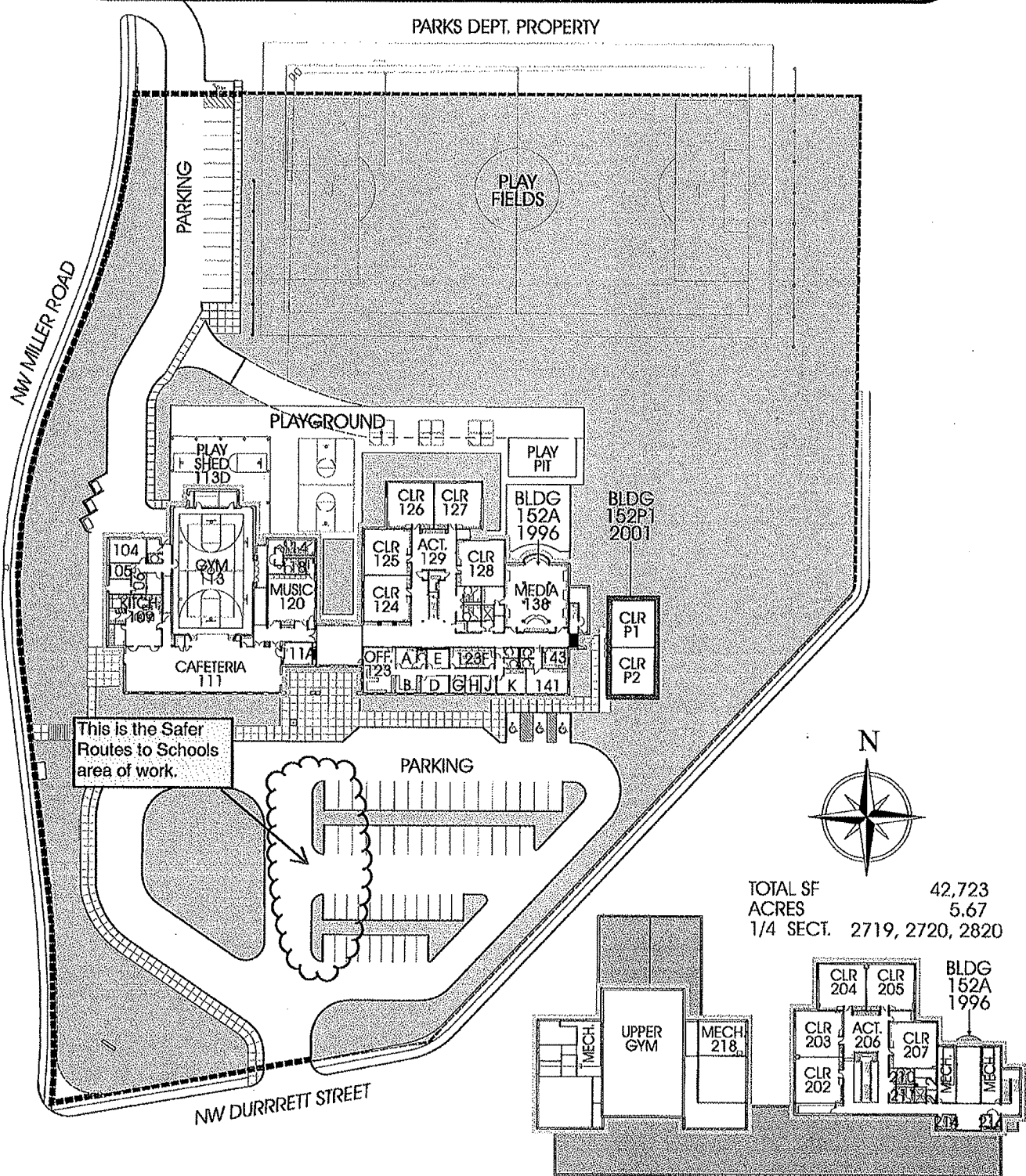
State I.D.

1N1E13BD 9700

Portland Public Schools

FACILITIES AND ASSET MANAGEMENT

Forest Park Elementary School 9935 NW Durrett Street Facility Plan



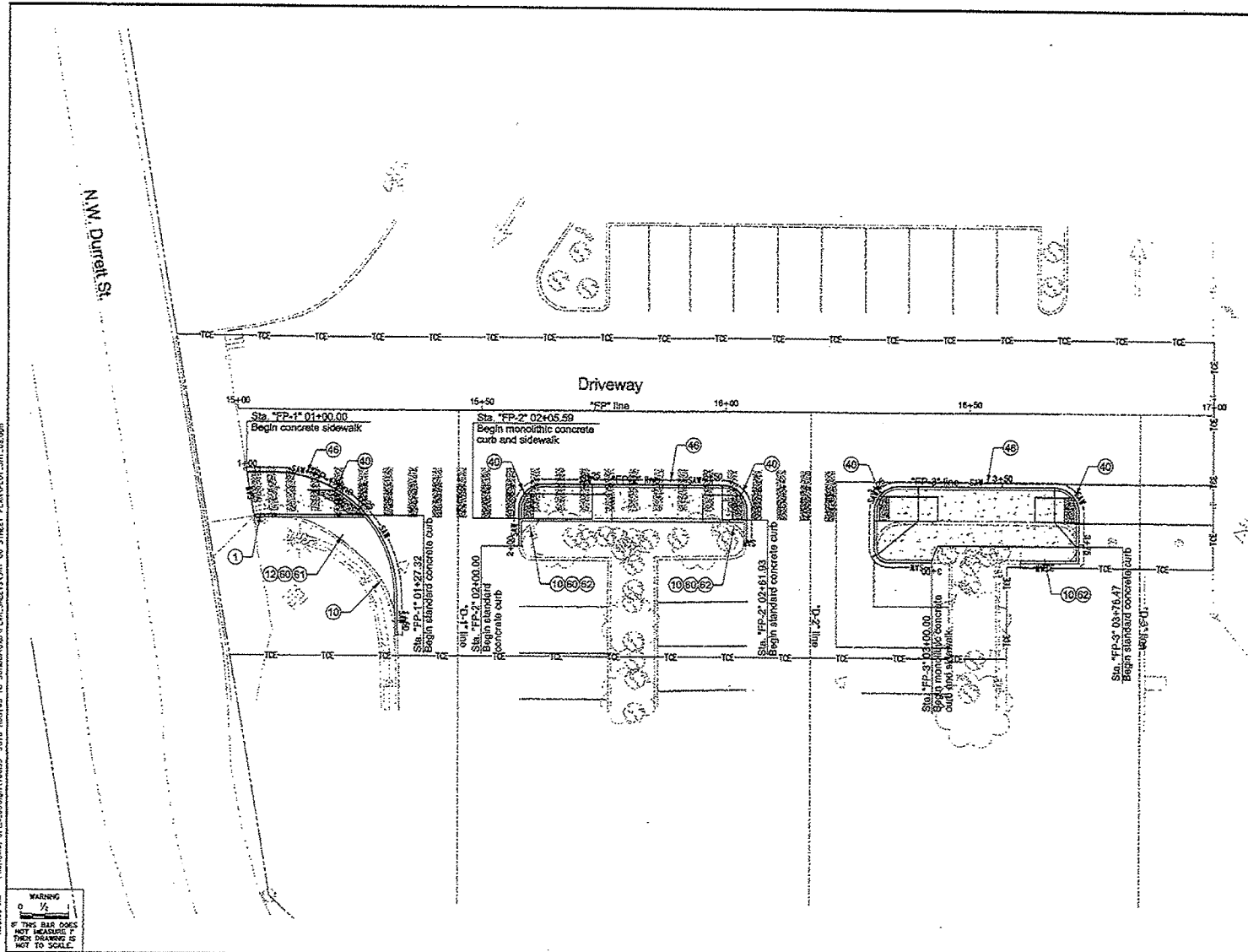
SITE / FIRST FLOOR PLAN

SECOND FLOOR PLAN

Forest Park

Construction Notes

- 1 Install inlet protection, type 3 - 1. See Std. Drg. No. RD1010.
- 10 Remove curb.
- 12 Remove AC pavement.
- 39 Construct standard curb. See Std. Drg. No. RD700
- 40 Construct monolithic sidewalk ramp. See Sht. 2F-1 and 2F-3. See Std. Drg. No. RD755, RD759.
- 46 Construct trench resurfacing.
- 60 Install topsoil - 6 in. thick.
- 61 Install lawn seeding.
- 62 Install bark mulch - 4 in. thick.

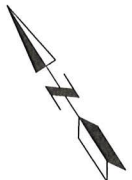
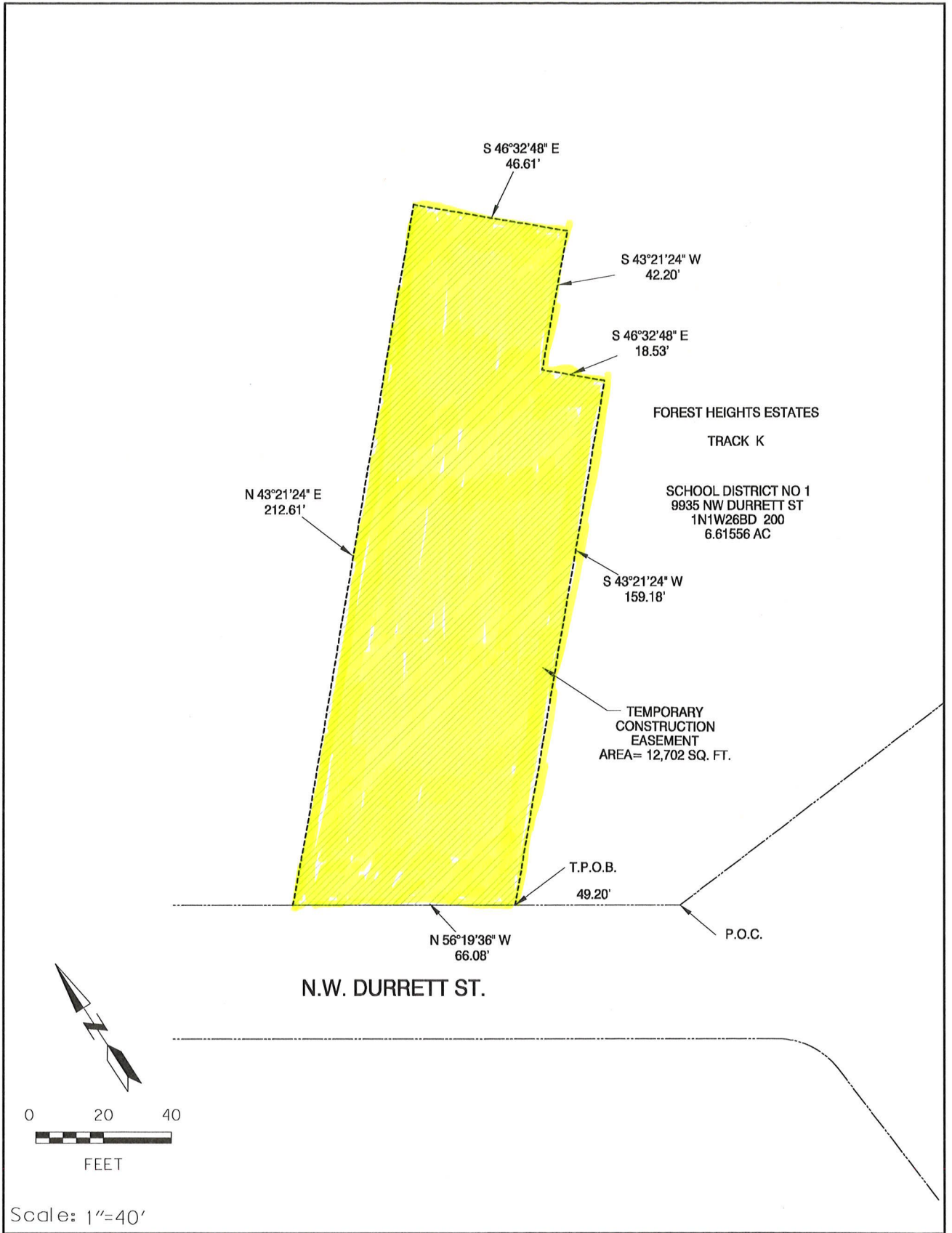


Plan Date: 7/27/00
 File Name: S:\a\design\10015- Safe Routes to School\PORTLAND\RIGHT OF STREET PLAN\PLAT_SHT_05.dwg
 10:30:22 AM
 WARNING
 IF THIS BAR DOES NOT MEASURE THEN DRAWING IS NOT TO SCALE.

REVISION NO. DATE DESCRIPTION 1 10/15/00		DESIGNED BY J. Sheppard DATE APPROVED May 2010 CHECKED BY D. Raner S. Townsend PROJECT NO. 700135 DRAWN BY J. Joe 1/4 SECTION		APPROVALS: SUPERVISING ENGINEER CITY ENGINEER REG. PROF. ENGR. NO. 91585	 SAM ADAMS STEVE TOMPKINS, P.E. MAYOR CITY ENGINEER	SAFE ROUTES TO SCHOOL PORTLAND ELEMENTARY SCHOOLS MULTNOMAH COUNTY Street Plan Site No. 5 (Area A)	SHEET NO. 8
--	--	--	--	---	---	---	----------------

184036

Plot Date: 2/8/2000 File: S:\JL\Design\T00135- Safe Routes To School\CAD\RIGHT-OF-WAY DRAWINGS\PLAN SHEETS\SHT_05-INW26BD_200 11n=40ft.dgn



Scale: 1"=40'



SAM ADAMS
STEVE TOWNSH, P.E.

MAYOR
CITY ENGINEER

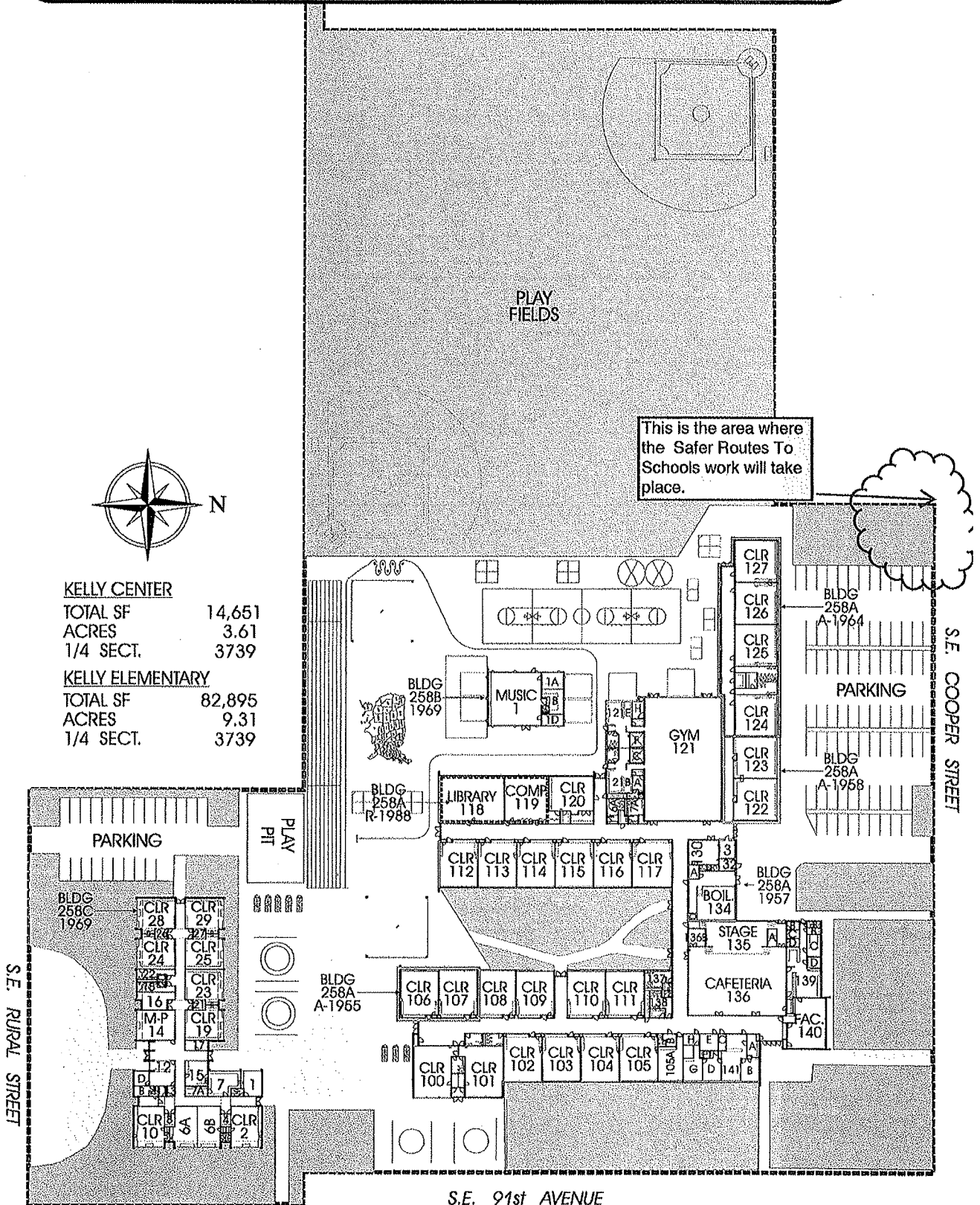
State I.D.

1N1W26BD 200

Portland Public Schools

FACILITIES AND ASSET MANAGEMENT

Kelly Elementary School 9030 SE Cooper 97266 Facility Plan



This is the area where the Safer Routes To Schools work will take place.



KELLY CENTER
TOTAL SF 14,651
ACRES 3.61
1/4 SECT. 3739

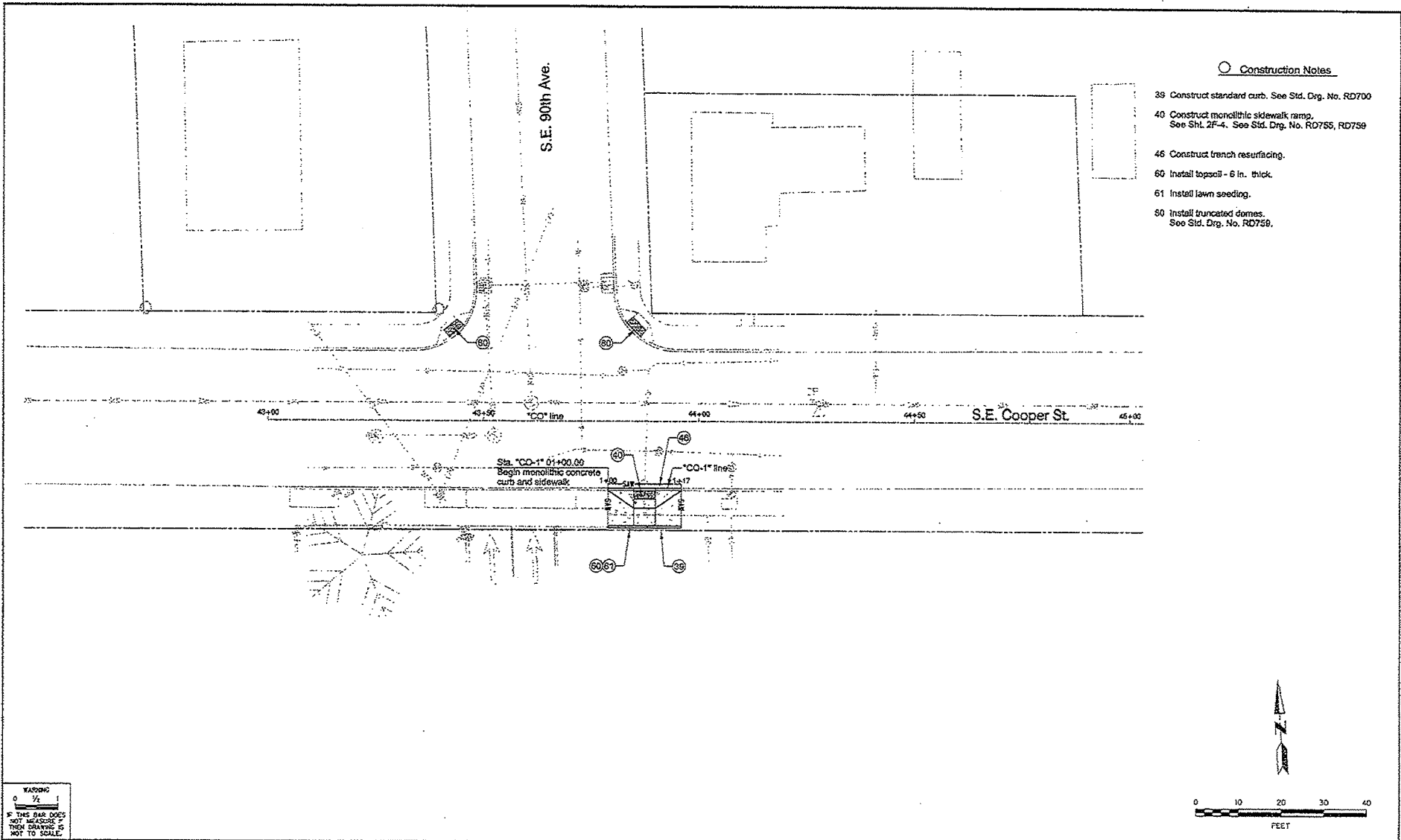
KELLY ELEMENTARY
TOTAL SF 82,895
ACRES 9.31
1/4 SECT. 3739

S.E. RURAL STREET

S.E. COOPER STREET

S.E. 91st AVENUE

Kells

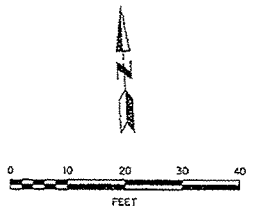


Construction Notes

- 39 Construct standard curb. See Std. Drg. No. RD700
- 40 Construct monolithic sidewalk ramp. See Sht. 2F-4. See Std. Drg. No. RD755, RD759
- 46 Construct trench resurfacing.
- 60 Install topsoil - 6 in. thick.
- 61 Install lawn seeding.
- 80 Install truncated domes. See Std. Drg. No. RD758.

Plan No. 21-1-10015 - Safe Routes to School/CO-1 Line Sheets/STREET PLANNING SHEETS

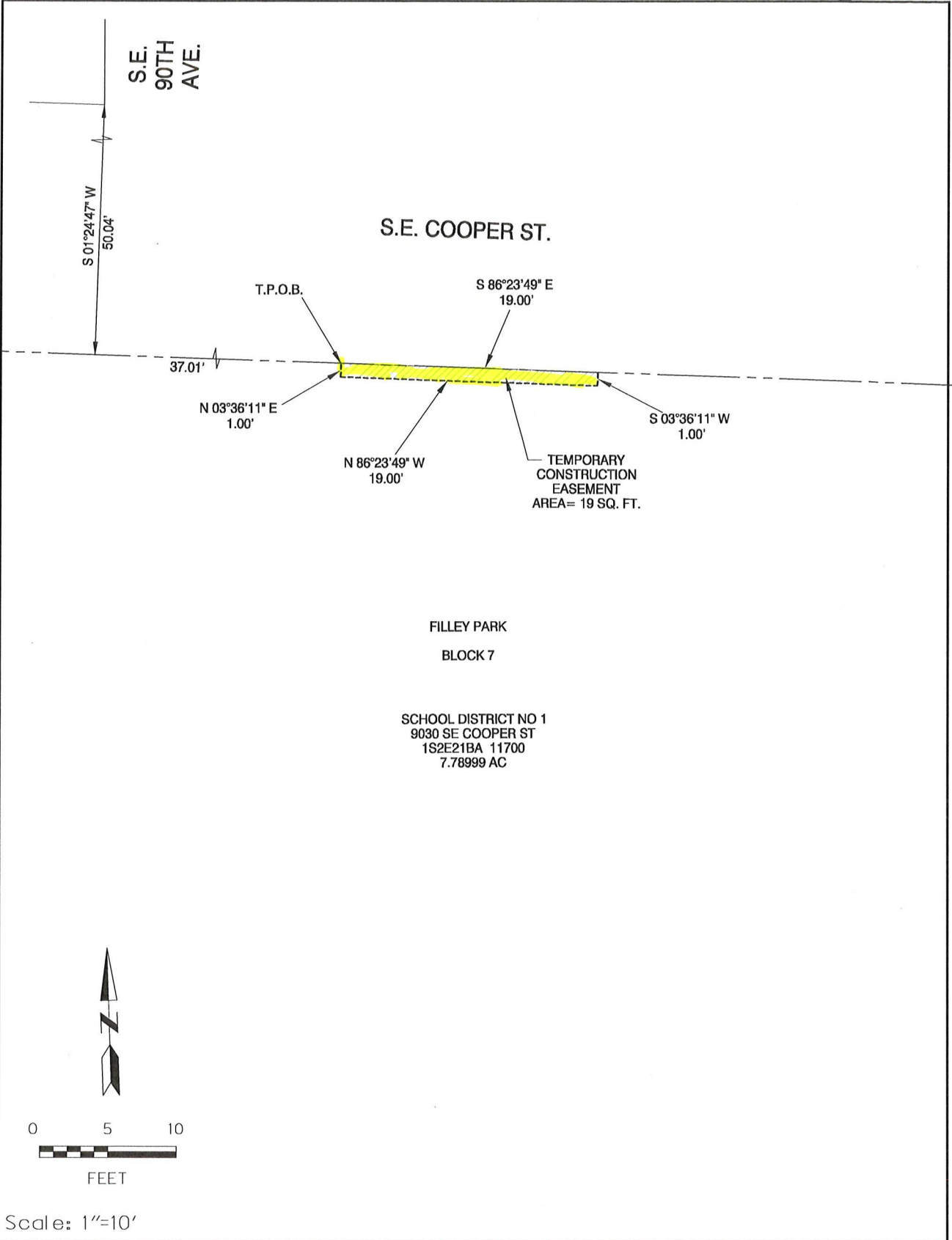
WARNING
 IF THIS BAR DOES NOT MEASURE THEN DRAWING IS NOT TO SCALE



DESIGNED BY J. Shepard DATE APPROVED May 2010		CHECKED BY D. Ramor DATE S. Tompkins		PROJECT NO. 700135			APPROVALS: ENGINEERING DIRECTOR CITY ENGINEER	 CITY OF PORTLAND BUREAU OF TRANSPORTATION SAM ADAMS STEVE TOMPKINS, PR.		SAFE ROUTES TO SCHOOL PORTLAND ELEMENTARY SCHOOLS MULTNOMAH COUNTY Street Plan Site No. 7A (Area E)	SHEET NO. 11
ENGINEERED BY J. Joe		PROJECT NUMBER X-SRTS-5900(195)		REG. PROF. ENG. NO. 148046 REG. PROF. ENG. NO. 318972							

184036

Plot Date: 2/8/2010 File: S:_I\Design\T00135- Safe Routes to School\CAD\RIGHT-OF-WAY DRAWINGS\PLAN_SHEETS\SHT_07B-1S2E21BA 11700 lin=10ft.dgn



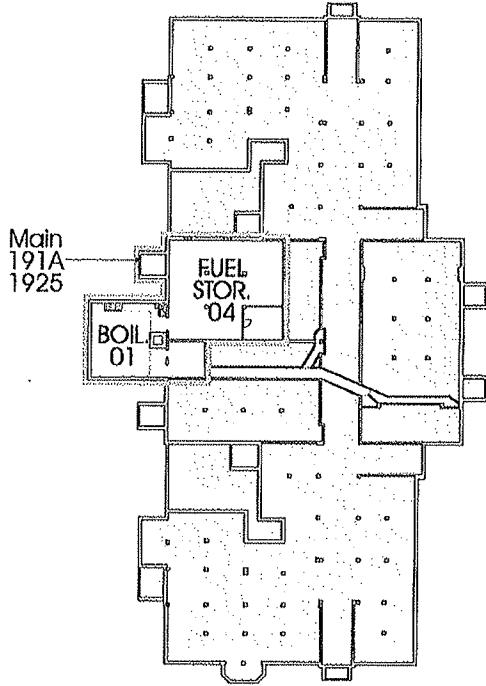
Portland Public Schools

FACILITIES AND ASSET MANAGEMENT

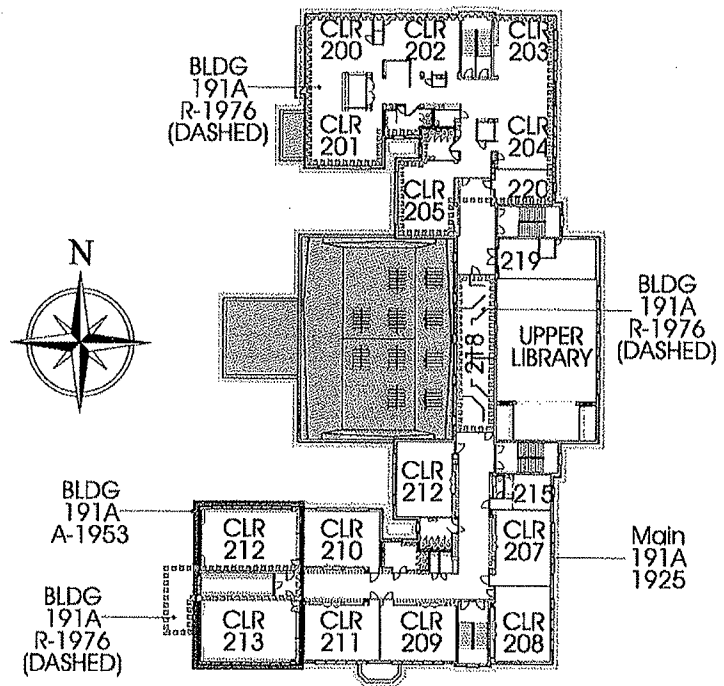
Sunnyside Elementary School

3421 SE Salmon Street 97214

Facility Plan

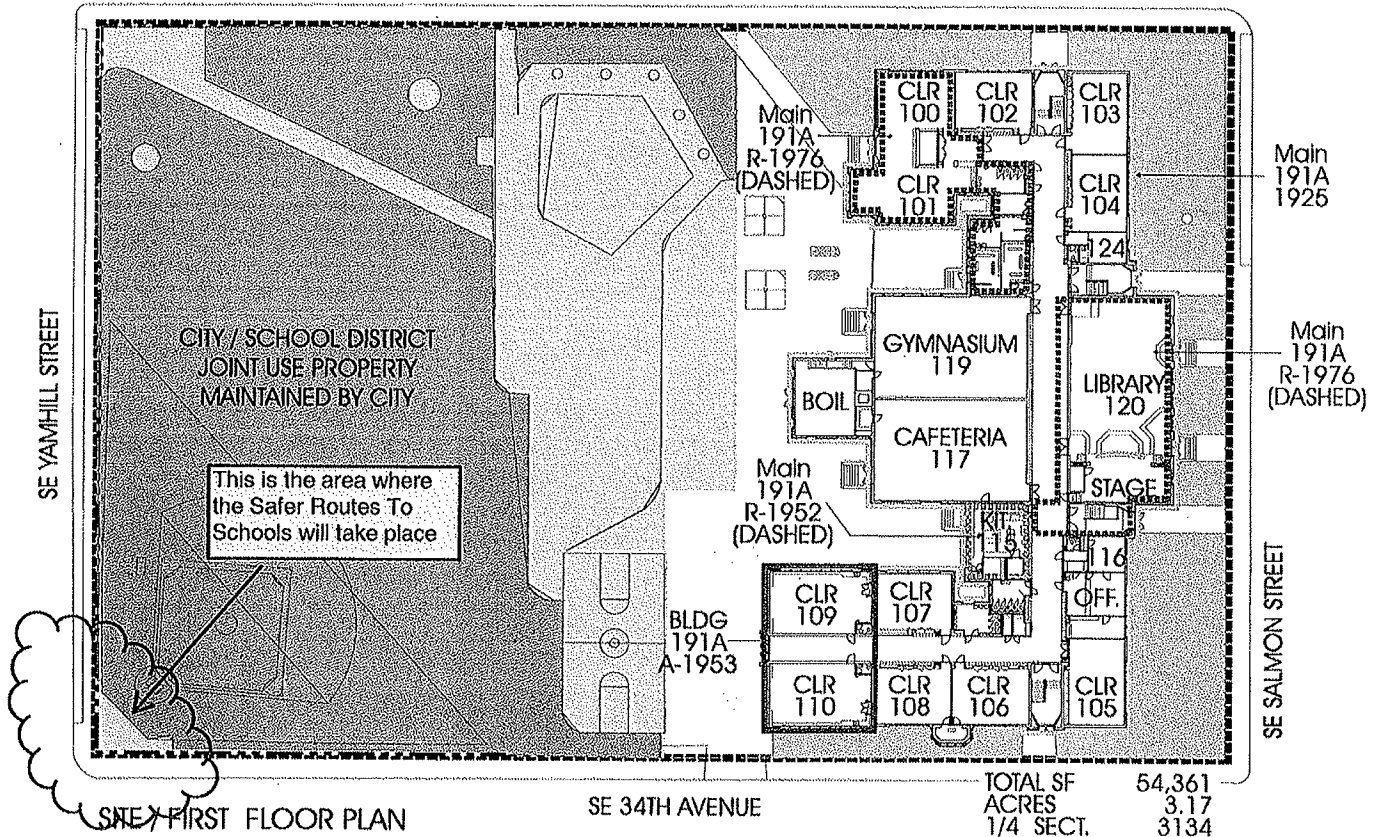



BASEMENT FLOOR PLAN



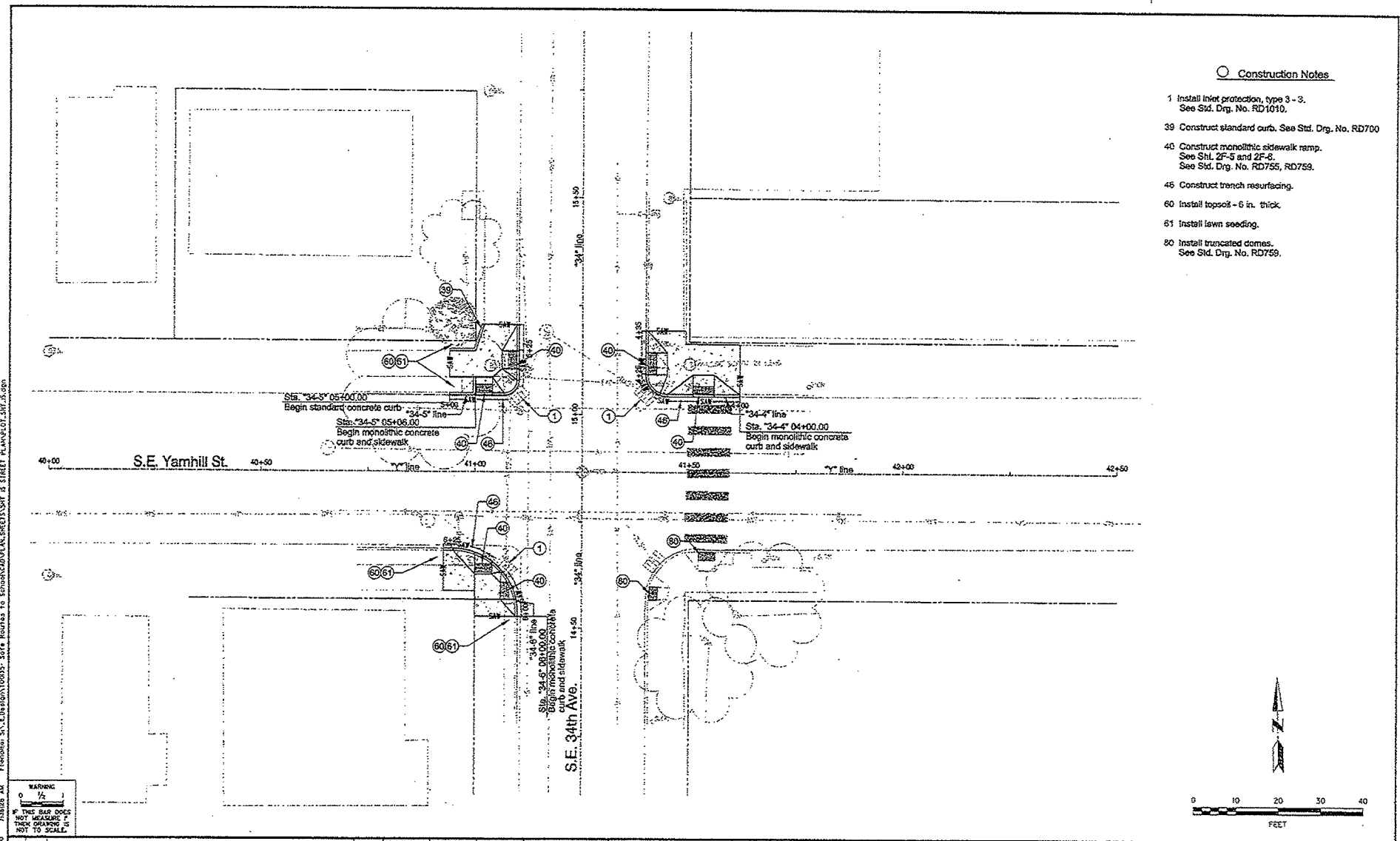
SECOND FLOOR PLAN

SE 36TH AVENUE



SITE FIRST FLOOR PLAN

Sungate



Construction Notes

- 1 Install inlet protection, type 3-3. See Std. Drg. No. RD1010.
- 39 Construct standard curb. See Std. Drg. No. RD700
- 40 Construct monolithic sidewalk ramp. See Shl. 2F-5 and 2F-6. See Std. Drg. No. RD755, RD759.
- 45 Construct trench resurfacing.
- 60 Install topsoil - 6 in. thick.
- 61 Install lawn seeding.
- 80 Install truncated domes. See Std. Drg. No. RD759.

File Path: S:_Design\10035 - Safe Routes to School\CD\UNRESERVED\SPR & STREET PLAN\LOT_SIT.DWG
 7/18/08 AM
 5/7/2008

WARNING
 0 1/4 1
 IF THIS BAR DOES NOT MEASURE THEN DRAWING IS NOT TO SCALE.

NO.	DATE	DESCRIPTION	APP.

DESIGNED BY J. Sheppard	DATE APPROVED May 2010
DRAWN BY D. Rammer	PROJECT NO. 700135
CHECKED BY J. Joe	1/4" SECTION
PROJECT NUMBER X-SRTS-09001195	



APPROVALS:
Steve Townsen
 CITY ENGINEER
 PER. PROJ. OVER. NO. 210496



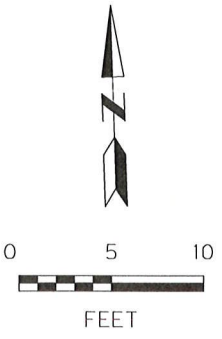
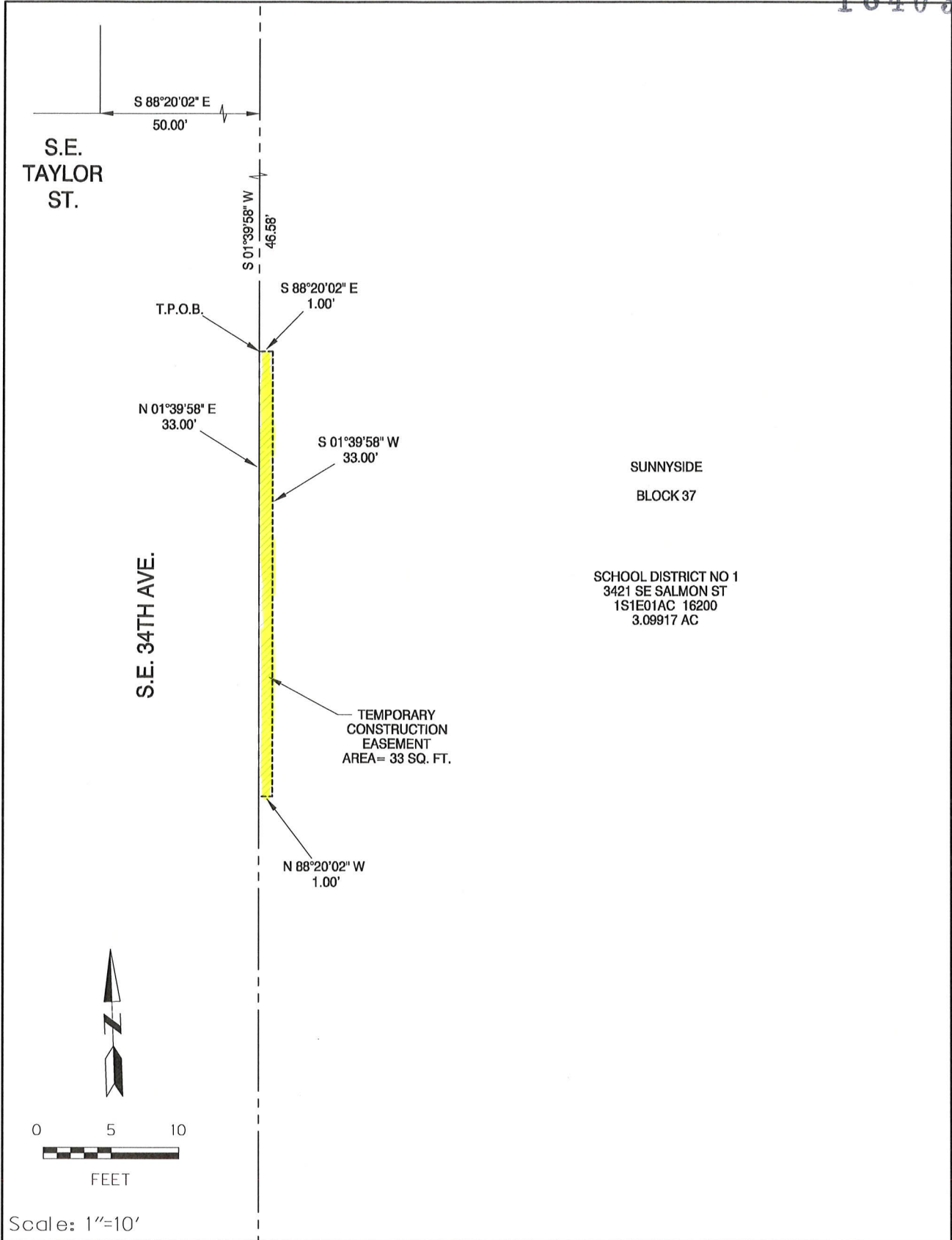
SAFE ROUTES TO SCHOOL
 PORTLAND ELEMENTARY SCHOOLS
 MULTNOMAH COUNTY
Street Plan
Site No. 10A
(Area C)

SHEET NO.
15

184036

184036

Plot Date: 2/8/2000 File Name: S:_il\Design\T00355- Safe Routes to School\CAD\RIGHT-OF-WAY DRAWINGS\PLAN_SHEETS\SHIT_IDB-ISE01AC 16200 lin=10ft.dgn



Scale: 1"=10'