



PLANNING PROCESS


- River Plan Committee
- Stakeholder interviews
- Task Groups
- Design Charette
- Public meetings
- Individual meetings
- Site Visits





BENEFITS

The River Plan / North Reach provides benefits for:

- the environment
- industry
- neighborhoods
- the public
- state and federal agencies
- the City of Portland






 **BACKGROUND**

What is the River Plan / North Reach?


A comprehensive multi objective plan that will:

- Update and replace the existing 1987 Willamette Greenway Plan and zoning code
- Respond to new environmental information and challenges
- Respond to Dolan vs. City of Tigard
- Integrate economic development into river planning
- Achieve clearer regulations
- Recommend implementation actions

A horizontal row of three small images. The left image shows an industrial facility with a large ship docked. The middle image shows two fish swimming in clear water. The right image shows a construction site with an excavator and piles of earth.


COMPREHENSIVE PLAN POLICIES

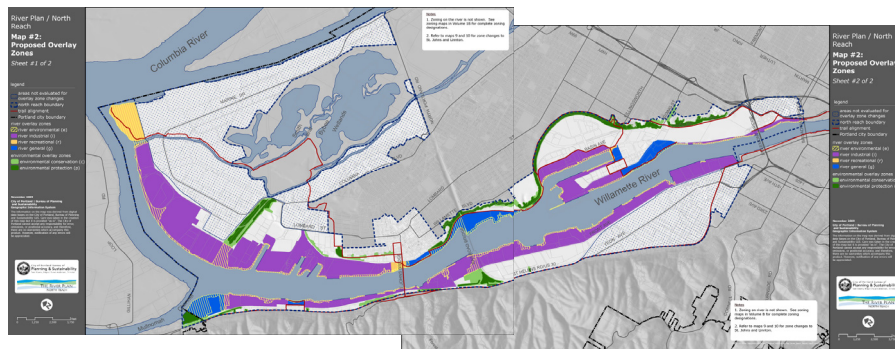
Comprehensive Plan Policies (River Renaissance Vision, 2001)
 Comprehensive Plan Objectives (River Concept, 2006)


FOCUS AREAS

- Economic Prosperity
- Watershed Health
- Access
- Riverfront Communities
- Working with our Partners

KEY RECOMMENDATIONS

1. Strengthen protection of industrial sanctuaries
2. Continue to reserve the riverfront for river-dependent or river-related uses
3. Increase regulatory certainty and flexibility
4. Invest in or advocate for public infrastructure improvements to fuel industrial reinvestment and create jobs

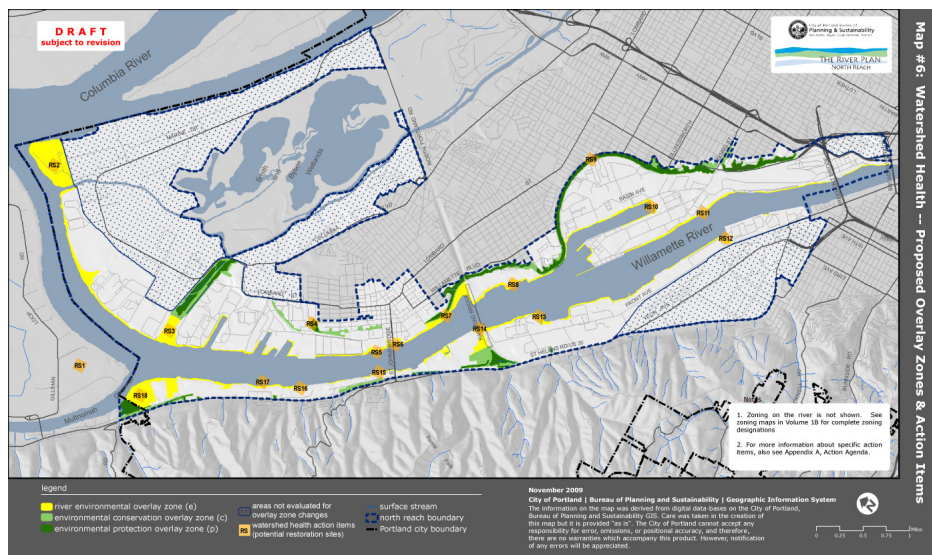


Purple: River Industrial (i)
Blue: River General (g)
Orange: River Recreation (r)

Yellow cross hatch: River Environmental (e)
Dark Green: Environmental Protection (p)
Light Green: Environmental Conservation (c)

KEY RECOMMENDATIONS

1. Adopt an updated Willamette River Natural Resources Inventory for the North Reach.
2. Adopt a new river environmental overlay zone applied to natural resource areas along the river.
3. Update the environmental conservation and protection overlay zones on upland natural resource areas.
4. Develop a River Restoration Program for the North Reach.

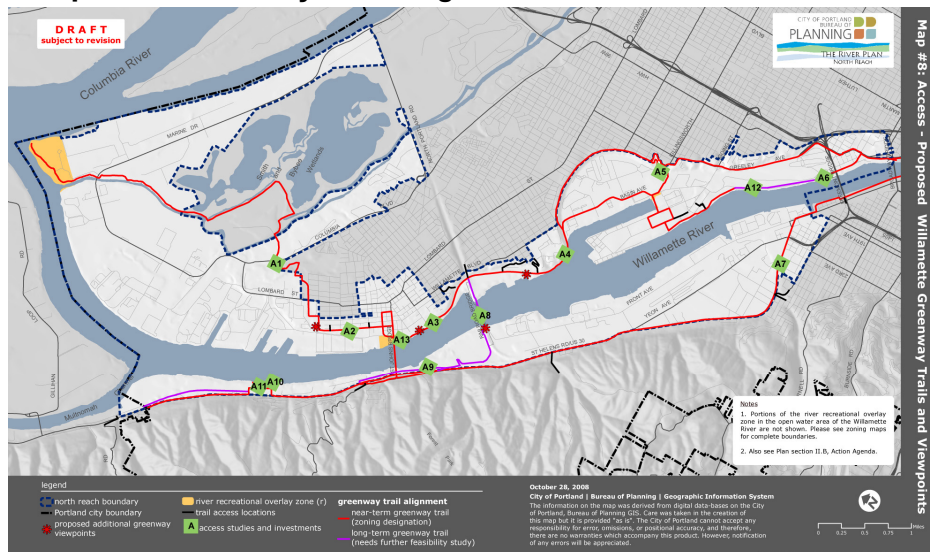


KEY RECOMMENDATION

Update the Willamette Greenway Trail alignment (short term and long term)



Proposed Greenway Trail Alignment



KEY RECOMMENDATIONS

- St. Johns / Cathedral Park community
- Linnton community
- University of Portland



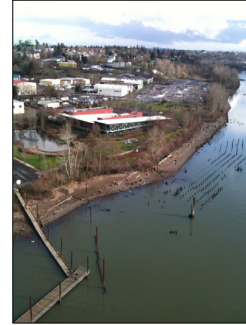
KEY RECOMMENDATIONS

1. Improve regulatory efficiency for activities below OHWM
2. Provide clear guidance for contaminated site cleanup



Mayor Adams' Proposed Amendments include:

- Revised vegetation standard
- Support for continued review below ordinary high water
- Clarification of when on-site or off site mitigation is preferred
- A temporary fee in lieu of mitigation
- Clarification of the City's role in mitigation banking
- Revised trail alignment in Linnton
- Revised environmental zoning near the University of Portland
- Clarified contamination related code
- New development standards for City parks
- Establishment of a North Reach Advisory Committee (NoRAC)



Mitigation Calculation Method

- Independent science panel review
- Stakeholder meetings
- City Council hearing

Develop and adopt administrative rules



- Coordinated City/state/federal review process
- North Reach Advisory Committee (NoRAC).

