

Willamette River Watershed

working for clean rivers

Portland watersheds: Columbia Slough • Fanno Creek • Johnson Creek • Tryon Creek • Willamette River

Baltimore Woods

Baltimore Woods in St. Johns contains rare and valuable white oak that provides habitat for several of Portland's special status wildlife species. The oak woodland buffer also filters stormwater runoff and prevents erosion to protect the Willamette River.



Edison Street looking north from the St. Johns Bridge



Baltimore Woods is a buffer between industrial and residential areas

Photography by Wilfred Thompson, Baltimore Woods resident

continued



**ENVIRONMENTAL SERVICES
CITY OF PORTLAND**

working for clean rivers



Site Nomination: Baltimore Woods
 Watershed: Willamette Watershed

- Grey to Green Acquisitions
- Natural Resource Inventory Special Habitat Area
- Park
- Open Space
- Common Area



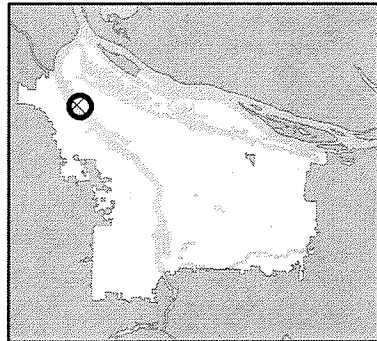
Grey to Green Land Acquisition Program



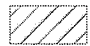
Date Printed: 2-12-10



Exhibit A: Grey to Green Land Acquisitions

183601



-  Subject lots
-  Parks and open spaces
-  Open Water

0 250 500

1,000

Feet



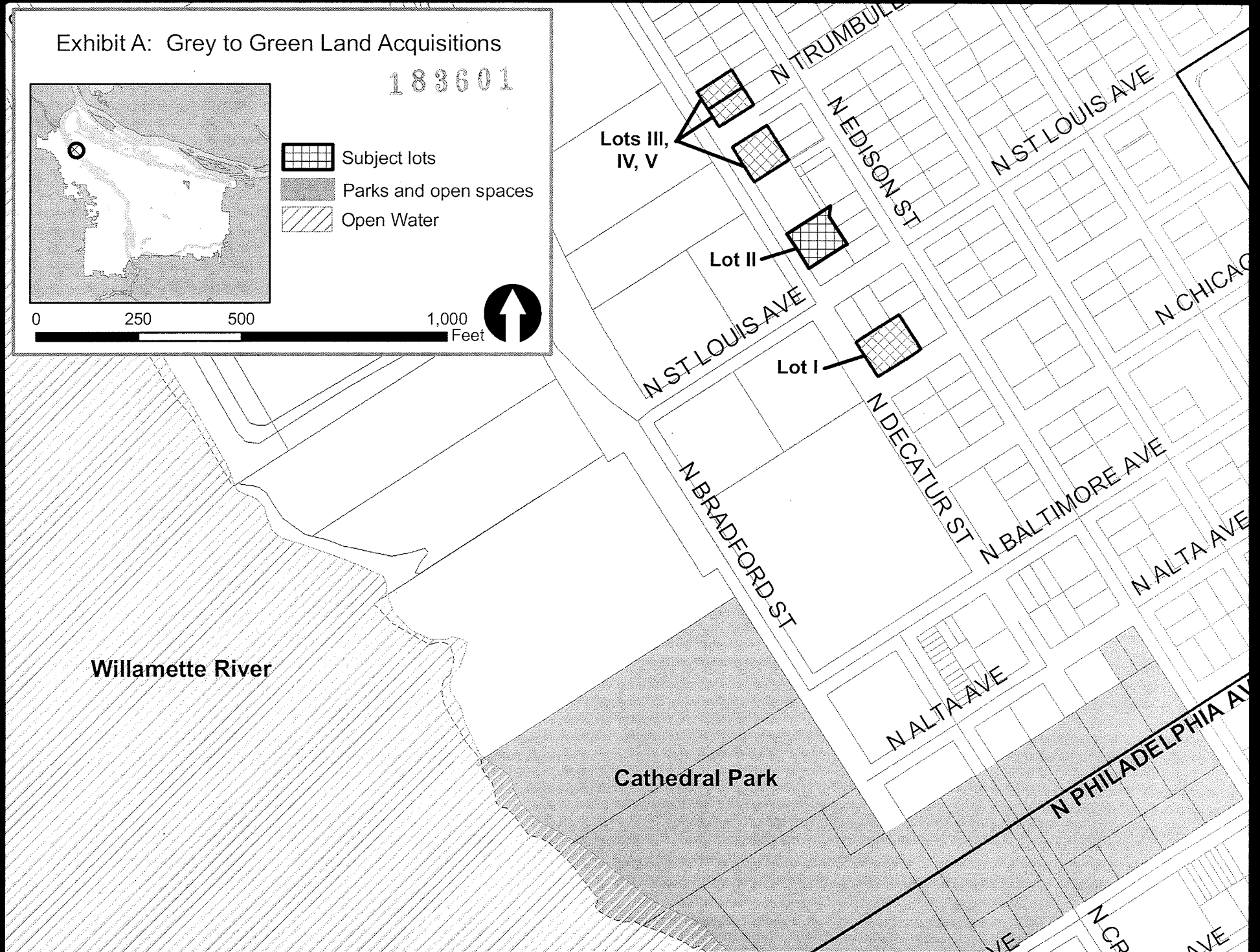
Lots III,
IV, V

Lot II

Lot I

Willamette River

Cathedral Park



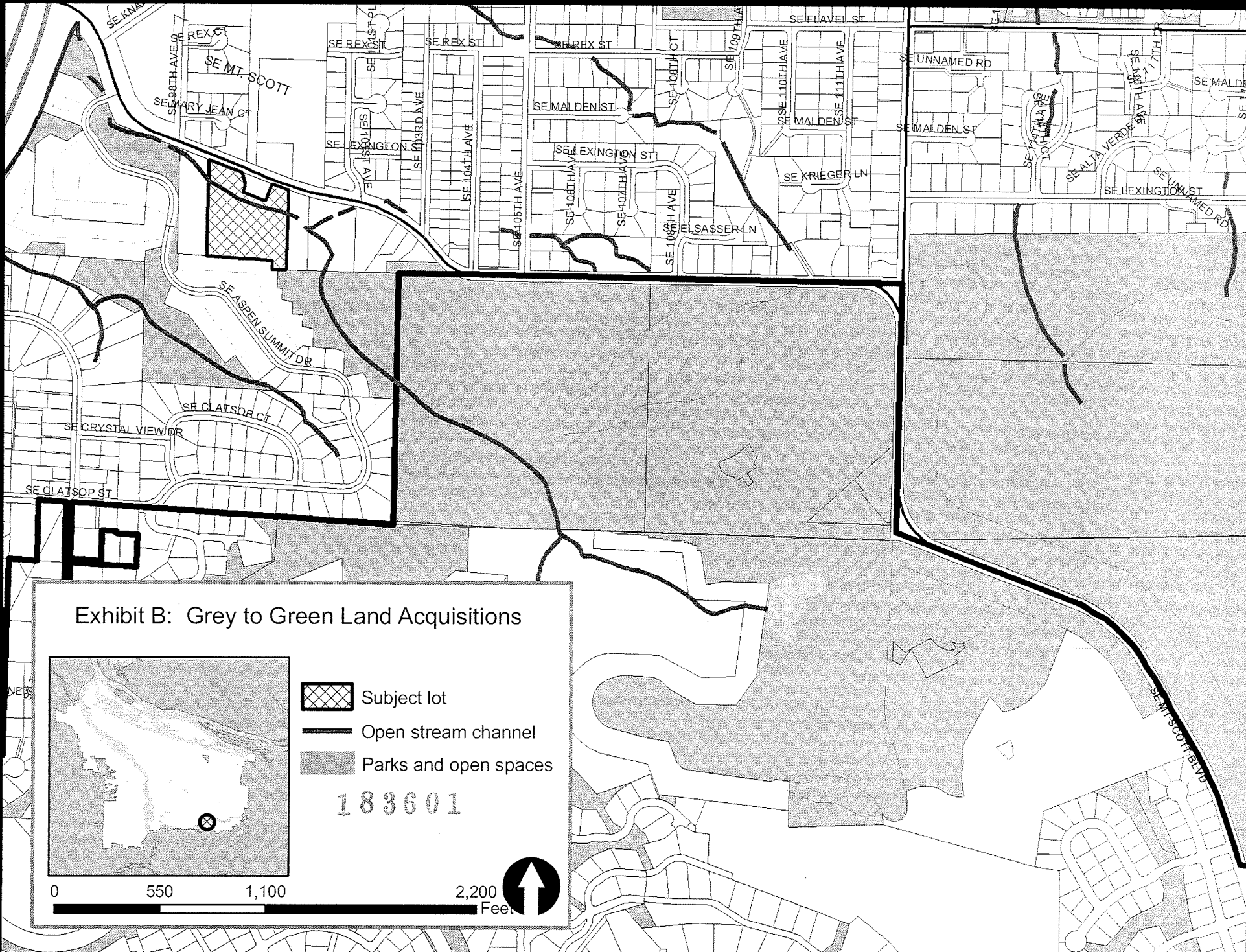
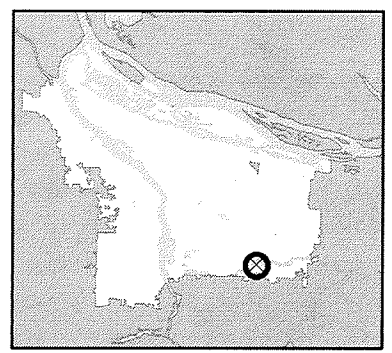





Exhibit B: Grey to Green Land Acquisitions



-  Subject lot
-  Open stream channel
-  Parks and open spaces

183601

0 550 1,100

2,200 Feet 

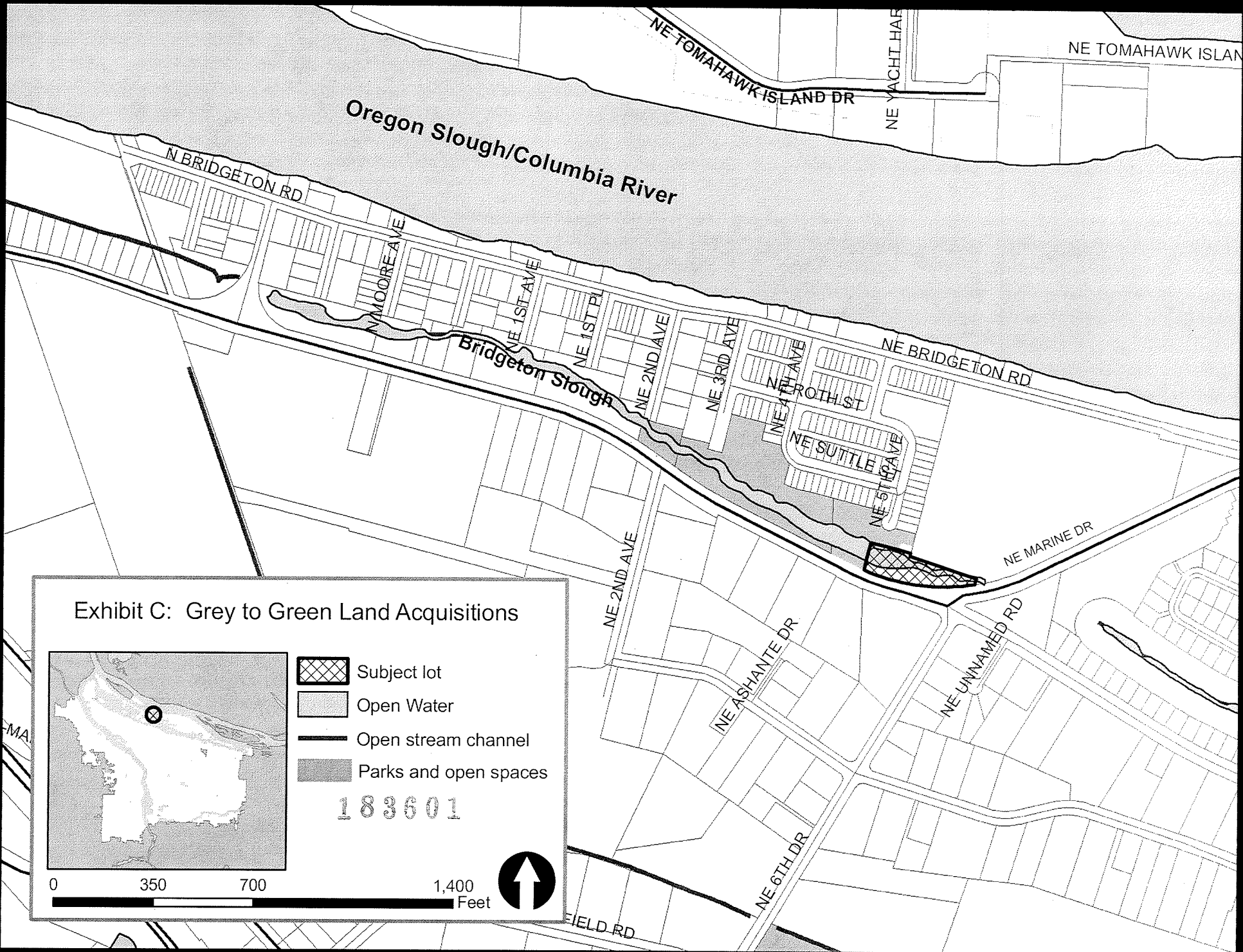
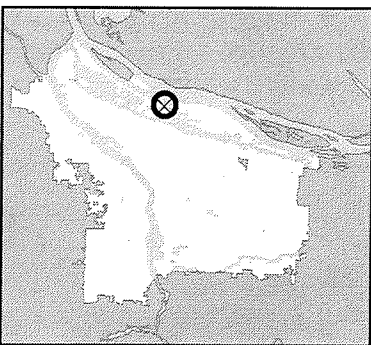






Exhibit C: Grey to Green Land Acquisitions



-  Subject lot
-  Open Water
-  Open stream channel
-  Parks and open spaces

183601

0 350 700

1,400

Feet



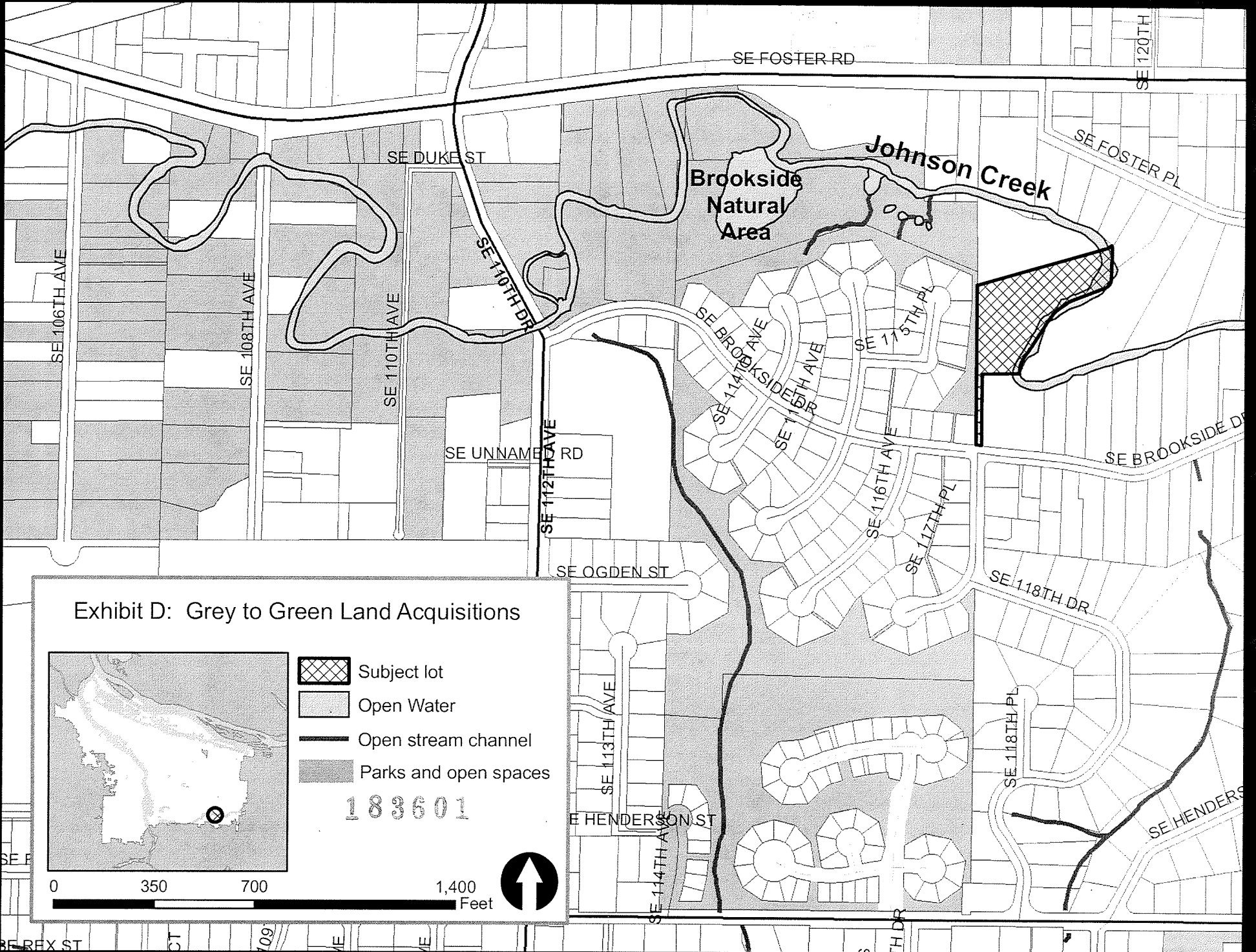
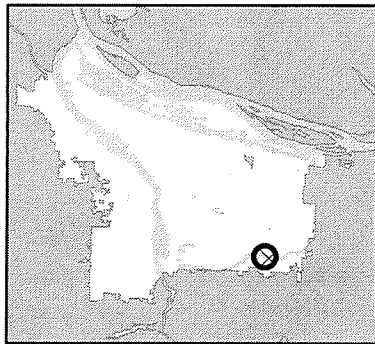

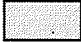




Exhibit D: Grey to Green Land Acquisitions



-  Subject lot
-  Open Water
-  Open stream channel
-  Parks and open spaces

183601

0 350 700

1,400
Feet

