

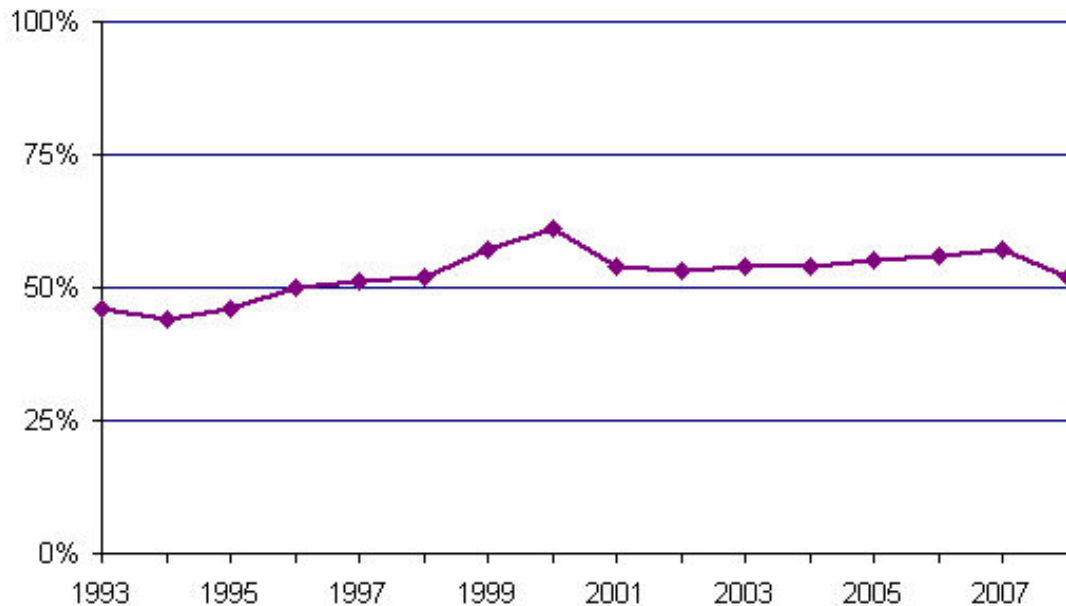
[Home](#)[Services](#)[Calendar](#)[Publications](#)[Charter, Code & Policies](#)[Divisions](#)[Intranet \(Employees\)](#)[Site Map](#)
[Assessments, & Liens Council Clerk Audit Services Elections IPR Hearings Lobbyist](#)
[POL](#) → [Government](#) → [Elected Officials](#) → [Auditor](#) → [Divisions](#) → [Progress Board](#) → [Benchmarks](#) → **[Public Safety](#)**

95 Emergency Preparedness - Printable Version - Edit Content

Increase the percentage of households able to adequately sustain themselves in an emergency situation for at least 72 hours.

The percentage of households in the City of Portland achieving this benchmark increased 6 percentage points, from 46% in 1993 to 52% in 2008. However, this also represents a 9 percentage point decline from the high of 61% in 2000. Interestingly, it seems Y2K was a greater motivator for residents than either Mother Nature (a 6.8 magnitude earthquake outside of Olympia, Washington in late February, 2001 which was felt in Portland) or the terrorist attacks of September 11th, 2001.

Percent of Households in Portland Prepared for an Emergency



Source: Portland Audit Services Department, Citizen Survey.

Table of Contents

[65 Graffiti](#)[84 Neighborhood Safety](#)[85 Crimes Motivated by Prejudice](#)[87 Crime Rate](#)[88 Arrest Rate](#)[90 Firearm Injuries and Fatalities](#)[91 Crime Victims](#)[95 Emergency Preparedness](#)[105 Matrix Releases](#)[Data notes](#)

[Further analysis conducted in 1999.](#)

© 2009 [City of Portland, Oregon](#)
[Disclaimer & Privacy Policy](#) - [Accessibility](#)

[Auditor LaVonne Griffin-Valade](#) - [Services](#) - [Calendar](#) - [Publications](#) - [Charter Code & Policies](#) - [Divisions](#)