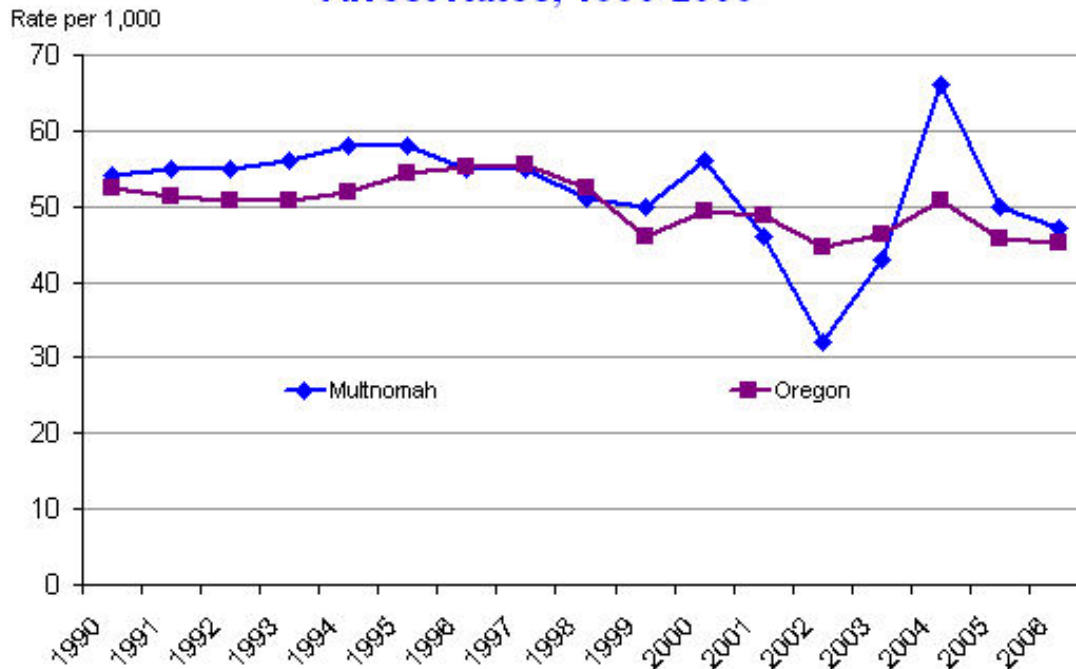


88 Arrest Rate - Printable Version - Edit Content

Monitor the Number of Arrests per 1,000 population.

In the ten years between 1997 and 2006, arrest rates in Multnomah County decreased by 15%, from 55 per 1,000 residents in 1997 to 47 per thousand in 2006 (when there were 33,277 arrests).

Arrest Rates, 1990-2006



Source: Law Enforcement Data System.

[Further analysis conducted in 1997.](#)

Table of Contents

[65 Graffiti](#)

[84 Neighborhood Safety](#)

[85 Crimes Motivated by Prejudice](#)

[87 Crime Rate](#)

88 Arrest Rate

[90 Firearm Injuries and Fatalities](#)

[91 Crime Victims](#)

[95 Emergency Preparedness](#)

[105 Matrix Releases](#)

[Data notes](#)

