

[Home](#)[Services](#)[Calendar](#)[Publications](#)[Charter, Code & Policies](#)[Divisions](#)[Intranet \(Employees\)](#)[Site Map](#)
[Assessments, & Liens Council Clerk Audit Services Elections IPR Hearings Lobbyist](#)
[POL](#) → [Government](#) → [Elected Officials](#) → [Auditor](#) → [Divisions](#) → [Progress Board](#) → [Benchmarks](#) → **[Economy](#)**

8 Unemployment - [Printable Version](#) - [Edit Content](#)

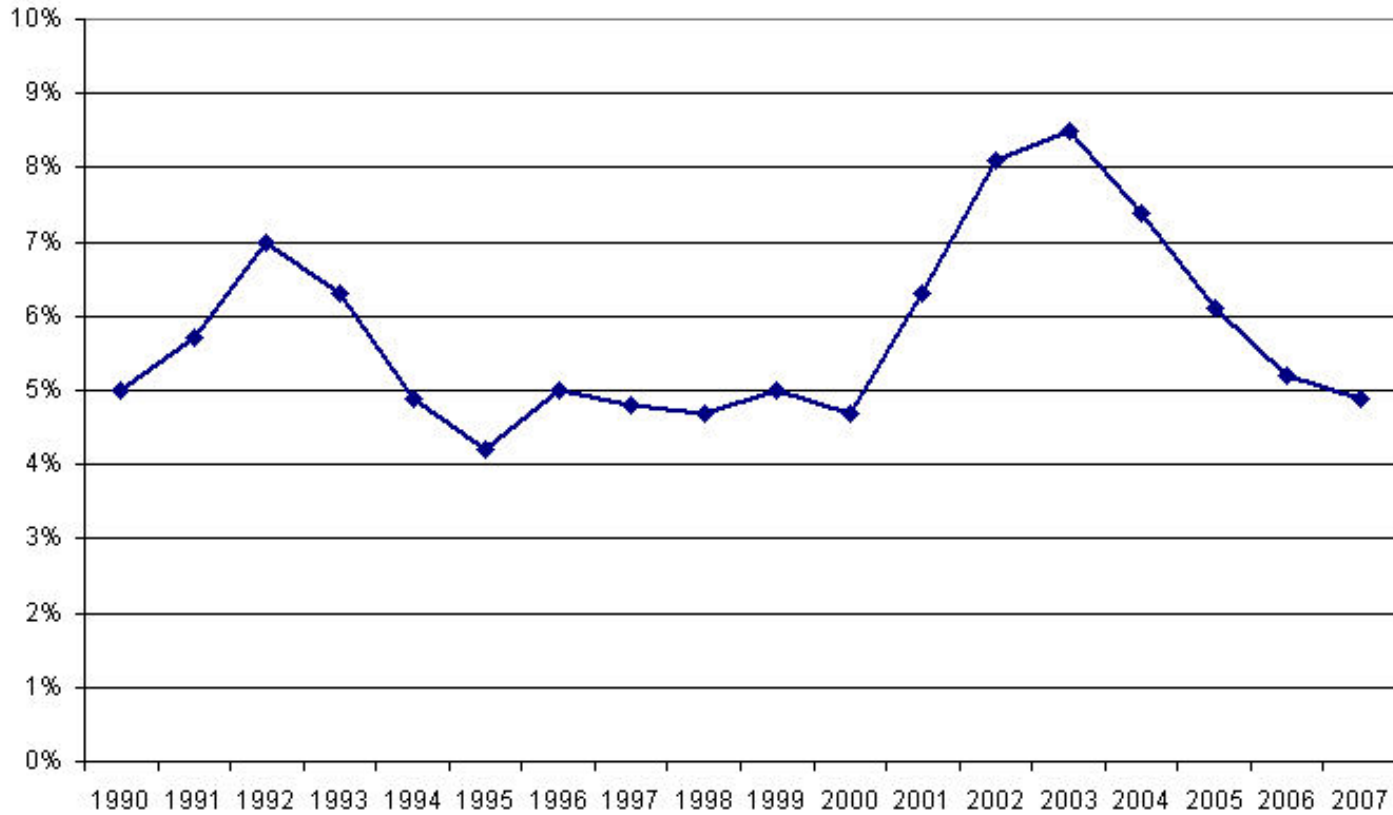
Decrease the unemployment rate.

The average annual unemployment rate in Multnomah County has generally reflected economic conditions in the rest of Oregon and the U.S. Multnomah County's unemployment rate dropped during the economic boom of the mid-to-late 90's, but recently rocketed to among the highest in the nation, reaching nearly 9% in 2003. It has dropped steadily for the last few years, and in 2007 hovered around 5%.

Table of Contents

[1 Per Capita Income](#)
[3 Average Annual Wages](#)
[7 Jobs](#)
[8 Unemployment](#)
[10 Export Activity of Business](#)
[16 Air Traffic](#)
[Data notes](#)

Multnomah County Average Annual Unemployment Rate



Source: Bureau of Labor Statistics, Local Area Unemployment Statistics (LAU)

[Further analysis conducted in 2001](#)

© 2009 [City of Portland, Oregon](#)
[Disclaimer & Privacy Policy](#) - [Accessibility](#)

[Auditor LaVonne Griffin-Valade](#) - [Services](#) - [Calendar](#) - [Publications](#) - [Charter Code & Policies](#) - [Divisions](#)