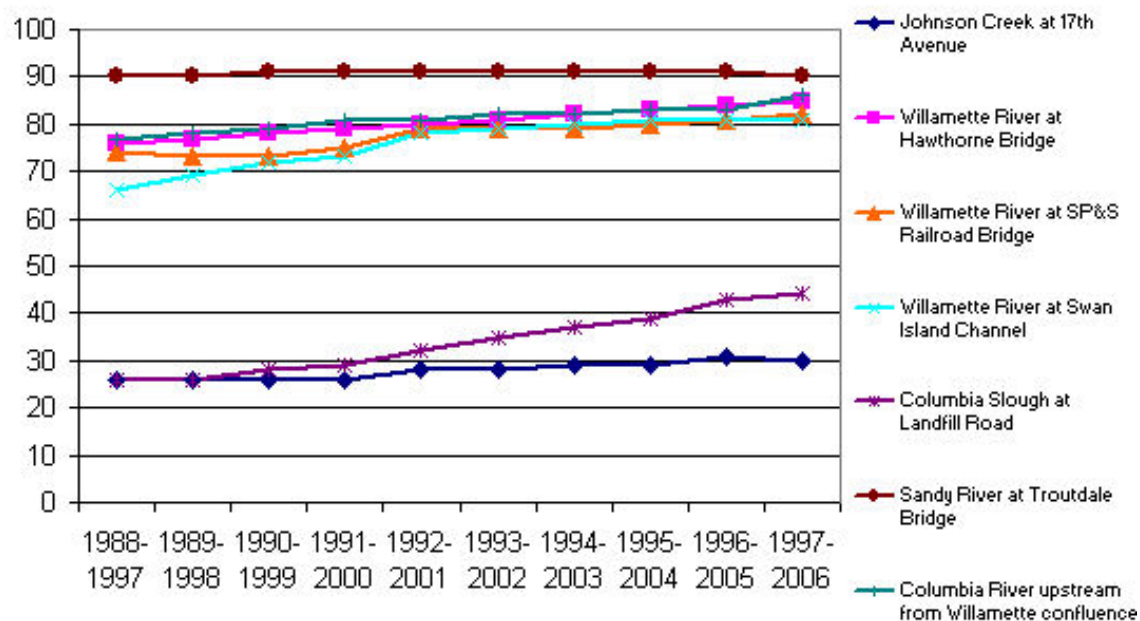


## 68 Water Quality - Printable Version - Edit Content

### Increase the in-stream water quality of streams monitored in Multnomah County.

Only one of the seven sites monitored in Multnomah County in 2006 was classified as having "excellent" average water quality. Out of the remaining six, two were "fair", two were "poor" and two were "very poor". Five of the sites showed no significant trend from last monitoring. The Willamette River (at the SP&S Railroad bridge) showed a significant decline in water quality, while the Columbia Slough (at Landfill Road) showed a significant increasing trend in quality.

### Water quality index scores, Multnomah County



Source: Oregon Department of Environmental Quality.

Scores: Excellent = above 90, Fair/good = between 80 - 90, Poor = between 60 - 80, Very poor = under 60.

#### Table of Contents

[59 Indicator Species](#)
[63 Public Transportation](#)
[66 Air Quality](#)
[67 Global Climate Change](#)
[68 Water Quality](#)
[69 Water Consumption](#)
[70 Energy Use](#)
[71 Solid Waste and Recycling](#)
[Data notes](#)

[Further analysis conducted in 1999.](#)

© 2009 [City of Portland, Oregon](#)  
[Disclaimer & Privacy Policy](#) - [Accessibility](#)

[Auditor LaVonne Griffin-Valade](#) - [Services](#) - [Calendar](#) - [Publications](#) - [Charter Code & Policies](#) - [Divisions](#)