

[Home](#)[Services](#)[Calendar](#)[Publications](#)[Charter, Code & Policies](#)[Divisions](#)[Intranet \(Employees\)](#)[Site Map](#)
[Assessments, & Liens Council Clerk Audit Services Elections IPR Hearings Lobbyist](#)
[POL](#) → [Government](#) → [Elected Officials](#) → [Auditor](#) → [Divisions](#) → [Progress Board](#) → [Benchmarks](#) → **[Environment](#)**

## 63 Public Transportation - Printable Version - Edit Content

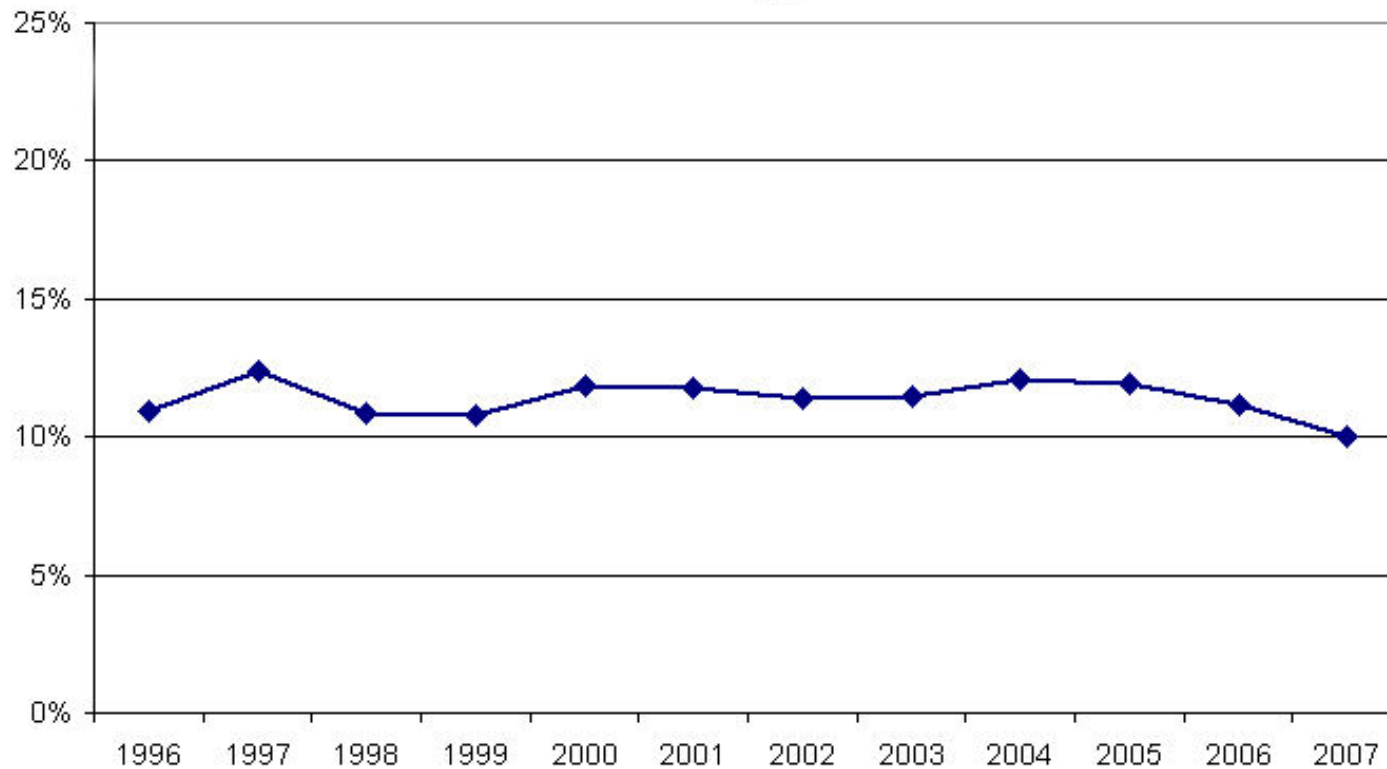
### Increase the percentage of people who commute to and from work using public transportation.

Since the mid-1990's, the percentage of Multnomah County workers using public transportation has fluctuated between 11 and 12%. While it fell to 10% in 2007, the more stable 3-year average ('05-'07) released by the Census Bureau remained at 11%.

#### Table of Contents

[59 Indicator Species](#)
**[63 Public Transportation](#)**
[66 Air Quality](#)
[67 Global Climate Change](#)
[68 Water Quality](#)
[69 Water Consumption](#)
[70 Energy Use](#)
[71 Solid Waste and Recycling](#)
[Data notes](#)

### Percent of workers 16 and over using public transportation, Multnomah County, 1996-2007



Source: US Census Bureau, American Community Survey

[Further analysis conducted in 1998.](#)

© 2009 [City of Portland, Oregon](#)  
[Disclaimer & Privacy Policy](#) - [Accessibility](#)

[Auditor LaVonne Griffin-Valade](#) - [Services](#) - [Calendar](#) - [Publications](#) - [Charter Code & Policies](#) - [Divisions](#)