

[Home](#)[Services](#)[Calendar](#)[Publications](#)[Charter, Code & Policies](#)[Divisions](#)[Intranet \(Employees\)](#)[Site Map](#)
[Assessments, & Liens Council Clerk Audit Services Elections IPR Hearings Lobbyist](#)

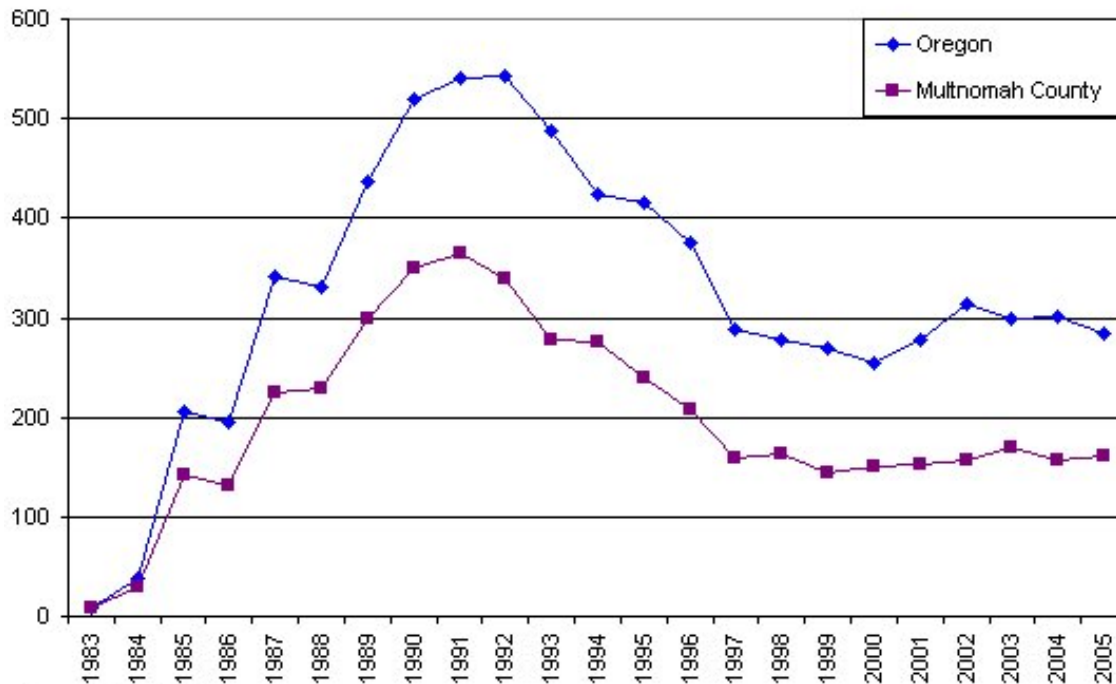
[POL](#) → [Government](#) → [Elected Officials](#) → [Auditor](#) → [Divisions](#) → [Progress Board](#) → [Benchmarks](#)
→ [Health & Families](#)

46 Early Detection of HIV - Printable Version - Edit Content

Decrease the number of 1st time positive HIV test results among Multnomah County residents, age 13 and older.

2006 marks the 25th year since the first AIDS case was diagnosed. In a 2006 report, UNAIDS and the World Health Organization estimated that nearly 40 million people are infected worldwide with HIV. In Multnomah County, the number of new HIV positive cases has increased slightly this century, after declining throughout the 90's from the peak year of 1991 (see top chart). These data report status at diagnosis; therefore, many cases can present as AIDS (see bottom chart).

Number of newly diagnosed HIV cases, residents ages 13 and over

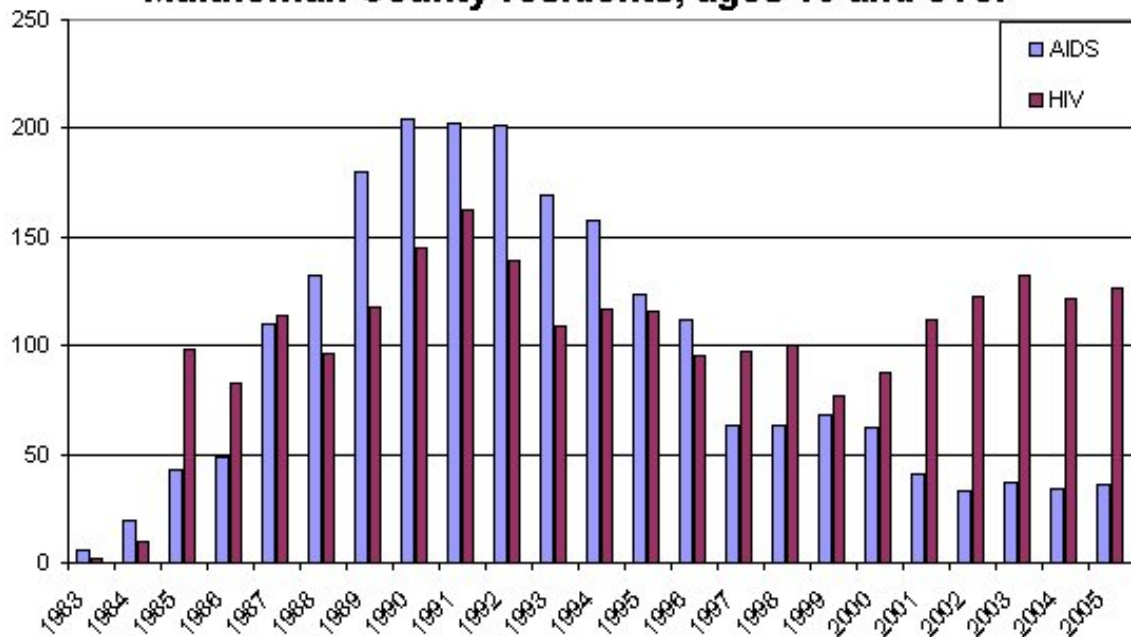


Source: Oregon DHS

Table of Contents

[6 People in Poverty](#)[26 Teen Pregnancy](#)[27 Healthy Birth Weight Babies](#)[29 Immunizations](#)[34 Student Substance and Tobacco Use](#)[44 Access to Health Care](#)[86a Child Abuse](#)[86b Partner Abuse](#)[92 Adult Alcohol and Drug Abuse](#)[Data notes](#)

Newly diagnosed cases of HIV and AIDS, Multnomah County residents, ages 13 and over



Oregon DHS, HIVSTD/TB Program

[Former Benchmark, Increase the percentage of newly diagnosed HIV cases that are asymptomatic, last updated in 1999.](#)

© 2009 [City of Portland, Oregon](#)
[Disclaimer & Privacy Policy](#) - [Accessibility](#)

[Auditor LaVonne Griffin-Valade](#) - [Services](#) - [Calendar](#) - [Publications](#) - [Charter Code & Policies](#) - [Divisions](#)