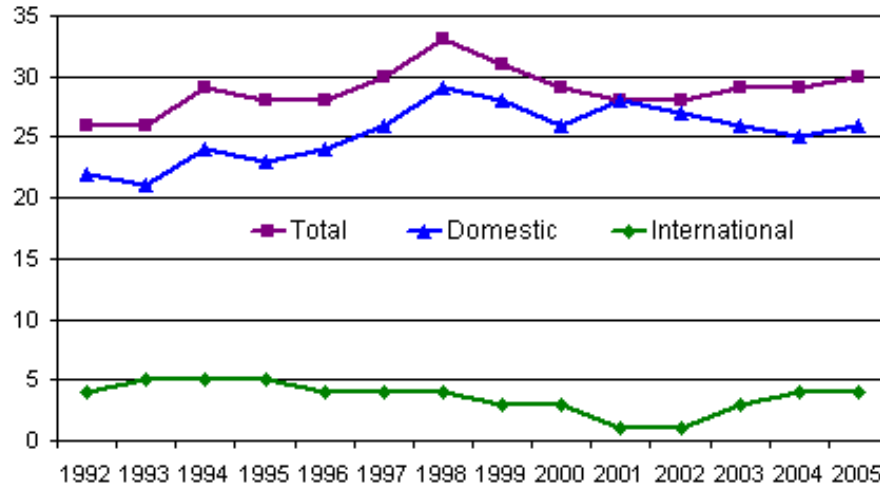


16 Air Traffic - Printable Version - Edit Content

Increase the number of areas over 1 million in population served by non-stop flights to and from Portland International Airport.

The number of metropolitan airports served by non-stop flights from Portland International Airport (PDX) decreased 15 percent between the peak year of 1998 and 2002 (a decline of 5 metropolitan cities served). However, in April and May of 2003, PDX initiated non-stop international service to Frankfurt, Germany and Guadalajara, Mexico, respectively. Domestically, after declining since the 2001 terrorists attacks, Portland saw its first uptick in 2005.

**Metropolitan Airports Served
by Nonstop Flights, 1992-2005**



Source: Port of Portland

[Further analysis conducted in 2001](#)

Table of Contents

[1 Per Capita Income](#)

[3 Average Annual Wages](#)

[7 Jobs](#)

[8 Unemployment](#)

[10 Export Activity of
Business](#)

[16 Air Traffic](#)

[Data notes](#)

