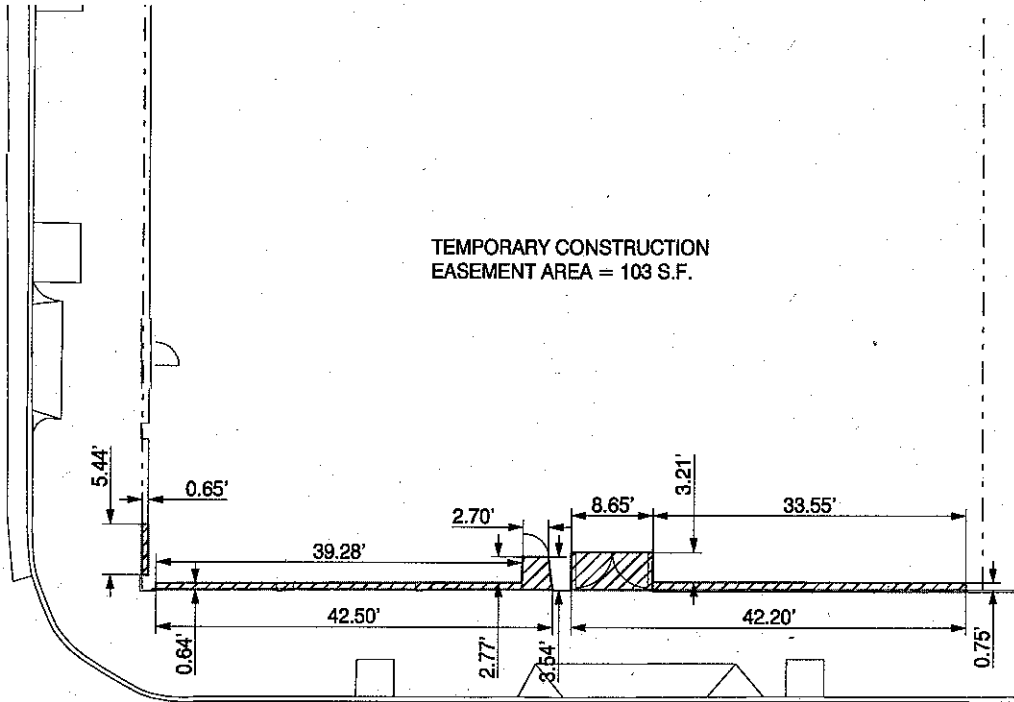


EXHIBIT 41

N.E. GRAND AVE.

TEMPORARY CONSTRUCTION
EASEMENT AREA = 103 S.F.



N.E. COUCH ST.



ROW FILE NO. 82
TAX LOT 1N1E35CB 4100




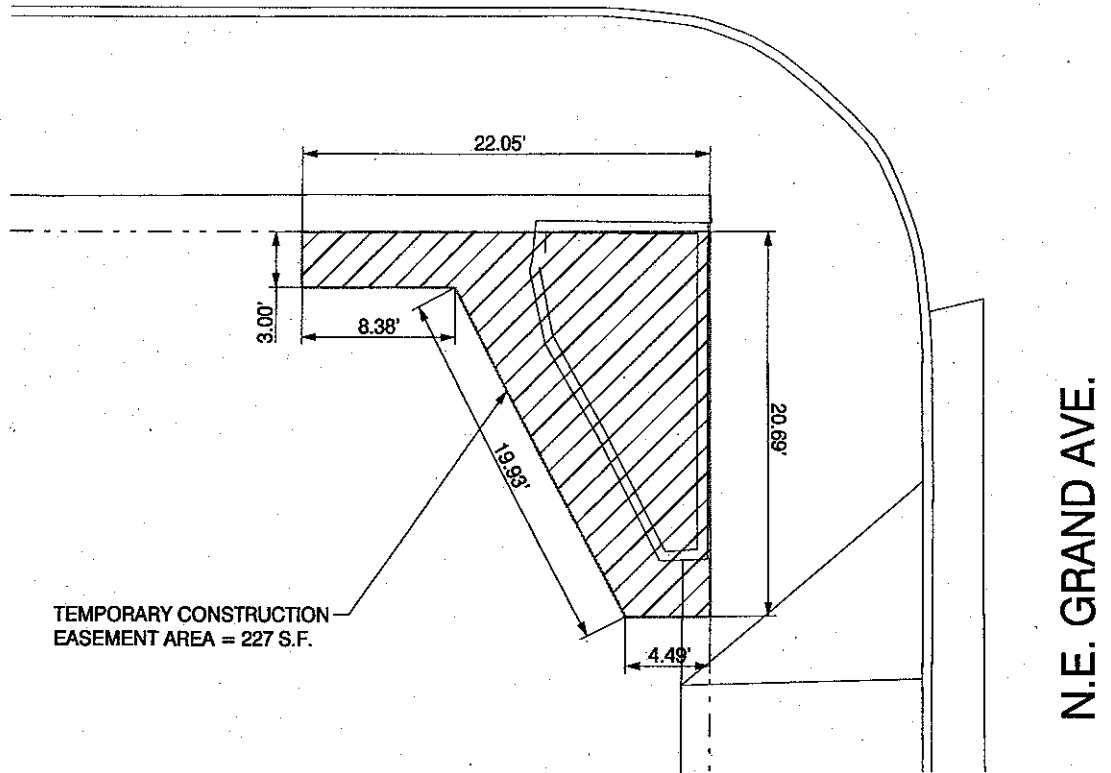
		CHECKED BY <i>RDP</i>	DESIGNED BY <i>HHPR TEAM</i>	DATE APPROVED		 Harper Houf Peterson Righellis Inc. <small>ENGINEERS • PLANNERS LANDSCAPE ARCHITECTS • SURVEYORS 205 SE Spokane Street, Suite 200, Portland, OR 97202 phone: 503.221.1131 www.hhp.com fax: 503.221.1171</small>	
			CAD BY <i>HHPR CAD</i>	DIV ENGINEER			
		PROJECT NO. <i>37642</i>	SECTION <i>###</i>				
NO.	DATE	DESCRIPTION	APPD.	FWHA PROJECT NUMBER <i>X-CM-XXXX(PDX)</i>			
REVISION							
APPROVALS: DIVISION ENGINEER _____ REG. PROF. ENGR. NO. 51538PE CITY ENGINEER _____ REG. PROF. ENGR. NO. 51538PE		 CITY OF PORTLAND OFFICE OF TRANSPORTATION SAM ADAMS STEVE TOWNSEN, P.E.		Temporary Construction Easement 106 N.E. GRAND AVE. NE 3RD AVE - NE 14TH AVE (PORTLAND) SEC E BURNSIDE - NE COUCH COUPLET		SHEET NO. 1	

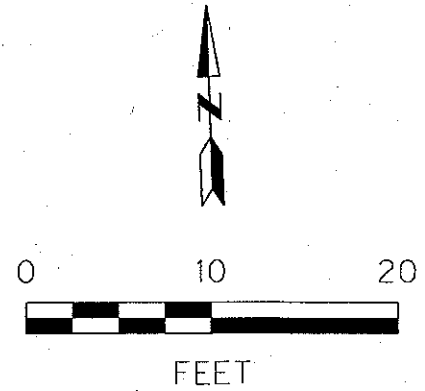
EXHIBIT 56

E. COUCH ST.



TEMPORARY CONSTRUCTION
EASEMENT AREA = 227 S.F.

N.E. GRAND AVE.



ROW FILE NO. 58
TAX LOT 1N1E35CB 8800

		CHECKED BY <i>RDP</i>	DESIGNED BY <i>HHPR TEAM</i>	DATE APPROVED
			CAD BY <i>HHPR CAD</i>	DIV ENGINEER
		PROJECT NO. <i>37642</i>	SECTION <i>###</i>	
NO. DATE DESCRIPTION APPD.		FHWA PROJECT NUMBER <i>X-CM-XXXX-(PDX)</i>		
REVISION				



**Harper
Houf Peterson
Righellis Inc.**
ENGINEERS • PLANNERS
LANDSCAPE ARCHITECTS • SURVEYORS
205 SE Spokane Street, Suite 200, Portland, OR 97202
phone: 503.221.1131 www.hhpr.com fax: 503.221.1171

APPROVALS:

DIVISION ENGINEER REG. PROF. ENGR. NO. 51538PE
CITY ENGINEER REG. PROF. ENGR. NO. 51538PE



SAM ADAMS
STEVE TOWNSEN, P.E. COMMISSIONER
CITY ENGINEER

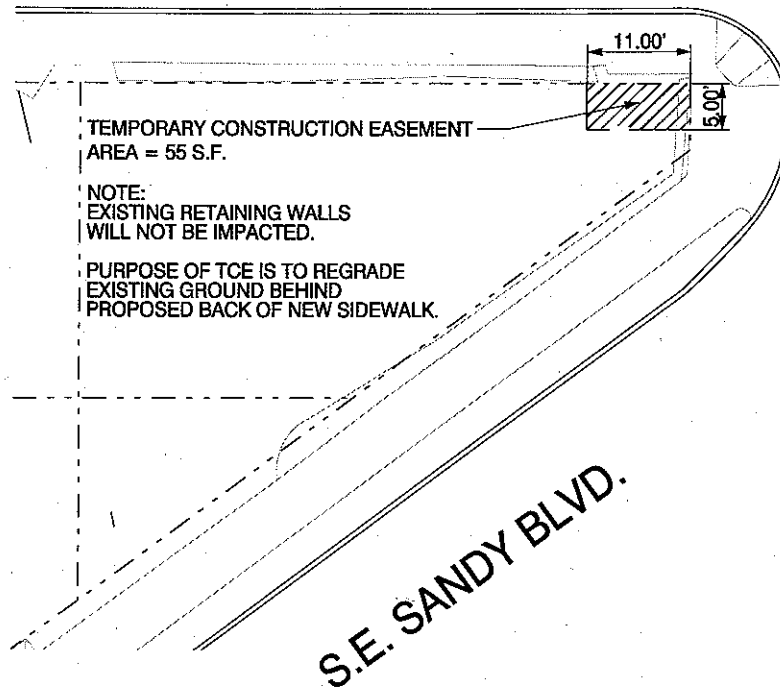
**Temporary Construction Easement
30 N.E. M.L. KING BLVD.**

NE 3RD AVE - NE 14TH AVE (PORTLAND) SEC
E BURNSIDE - NE COUCH COUPLET




SHEET NO.
1

EXHIBIT 57

E. BURNSIDE ST.



ROW FILE NO. 20
TAX LOT 1N1E35CD 700

				CHECKED BY <i>RDP</i>	DESIGNED BY <i>HHPR TEAM</i>	DATE APPROVED		 Harper Houf Peterson Righellis Inc. <small>ENGINEERS • PLANNERS LANDSCAPE ARCHITECTS • SURVEYORS 205 SE Spokane Street, Suite 200, Portland, OR 97202 phone: 503.221.1131 www.hhpr.com fax: 503.221.1171</small>											
					CAO BY <i>HHPR CAD</i>	O/I ENGINEER													
				PROJECT NO. <i>37679</i>	1/2 SECTION <i>####</i>														
				FIWA PROJECT NUMBER <i>X-HPP-5900(XXX)</i>															
<table border="1"> <thead> <tr> <th>NO.</th> <th>DATE</th> <th>DESCRIPTION</th> <th>APPR.</th> </tr> </thead> <tbody> <tr> <td colspan="4" style="text-align: center;">REVISION</td> </tr> </tbody> </table>				NO.	DATE	DESCRIPTION	APPR.	REVISION				APPROVALS: DIVISION ENGINEER _____ REG. PROF. ENGR. NO. 51538PE CITY ENGINEER _____ REG. PROF. ENGR. NO. 51538PE			 <p>CITY OF PORTLAND OFFICE OF TRANSPORTATION</p> <p>SAM ADAMS STEVE TOWNSEN, P.E.</p> <p>COMMISSIONER CITY ENGINEER</p>		<p><i>Temporary Construction Easement W Burnside & NE Sandy Blvd</i></p> <p>E BURNSIDE / NE COUCH</p> <p>NE 3RD AVE - NE 14TH AVE</p>		SHEET NO. 1
NO.	DATE	DESCRIPTION	APPR.																
REVISION																			