



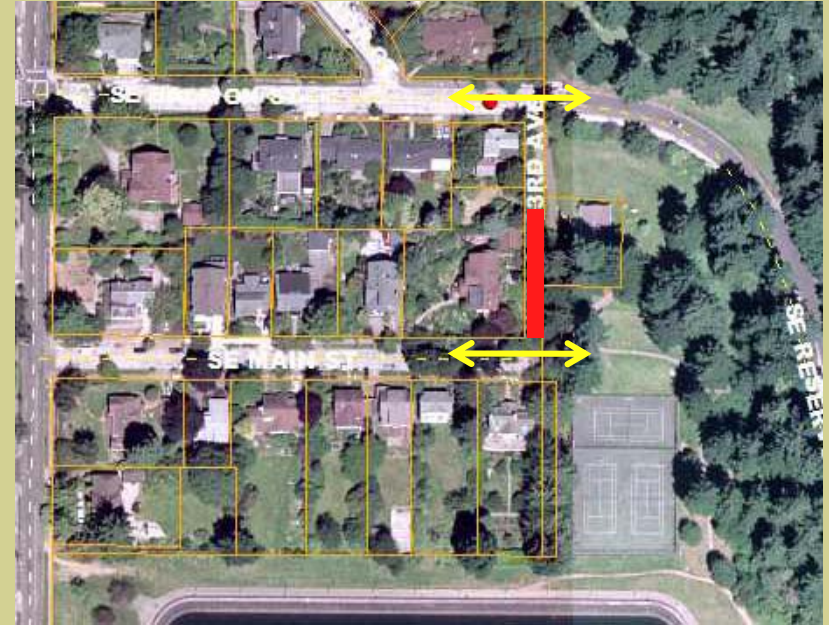
Street Vacation at SE 63rd Ave.

Applicant: Jim Williams

Representative: Ben Schonberger, AICP, Winterbrook Planning

Current Conditions

- SE 63rd Ave is unimproved, 20 ft. wide right of way
- Steep, 10 foot drop at south (Main Street)
- Historically has only provided access to one home
- No change to park access from SE Salmon and Main.
- No change to circulation within park.



Looking south from Salmon



Looking south along ROW



Connection to Main Street





Looking South from SE Salmon Street



Looking South along right of way



Connection to Main Street

Public Review

- **City Agencies.** Parks, Water, Fire, BES, BDS, Planning, PDOT all responded favorably.
- **Parks and Water Bureaus.** Abutting landowners: reviewed proposal, visited site, signed off on petition.
- **Neighborhood Association.** Met with Mt. Tabor N.A., no objections to the proposal.
- **Neighbors.** All landowners within the petition area signed petition consenting to proposal.
- **Public testimony.** No public testimony at Planning Commission, no written comments received.
- **Planning Commission.** Voted unanimously in favor of petition.