

was called by one of the insurance companies for special work.

Mr. Reed is a member of the Arlington Club, the Commercial Club, St. Andrews Society, and is a member of the Pennsylvania Branch of the Society of Cincinnati. He is married and resides at 1115 Thurman street and his office is in the Wilcox building.

**B. F. Dowell**

B. F. Dowell, chief engineer of the Port-

land Fire Department since November 1, 1911, was born in Jacksonville, Or., on March 22, 1870. He came to Portland in 1885, and was educated here in the grammar schools and the old Portland high school.

Chief Dowell joined the Fire Department in 1895. His career as a firefighter has been brilliant and his rise in the service rapid. Sixteen years after going into the department he was its chief.

At the Lewis and Clark Fair in 1905, he was made battalion chief in charge of the

part of the Fire Department has been changed from horse to auto equipment. Nine new companies have been added, and there is one new fireboat. Moreover, the efficiency of the department has so increased that it ranks with the best in the country. Chief Dowell is working now for the installation of a high pressure water system in the downtown district, to which stand pipes, cellar pipes and hydrants on every corner would be connected, with the latter so constructed that they can be used as turret nozzles.

**Sunset Creamery**

Though not among the largest, the Sunset Creamery is one of the most solid and best managed creamery concerns in Portland. Its strength and the fine reputation of all its products may be attributed to large degree to the fact that it has never made any effort to be classed among the big creameries. A conservative business for a select trade, rather than a great volume of business at a possible sacrifice of quality in the effort to obtain quantity, is one of the firm principles on which the Sunset Creamery is conducted.

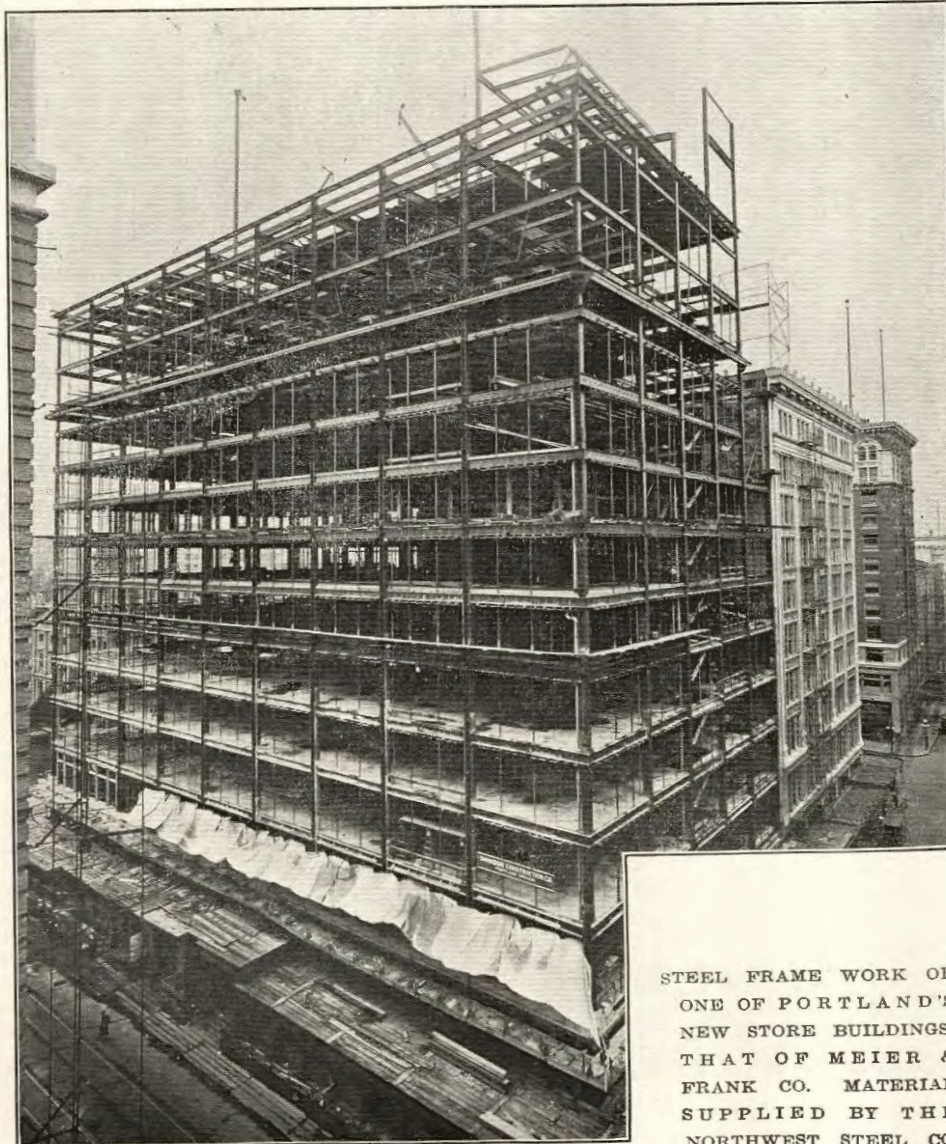
Founded 15 years ago by F. H. Wiencken on the southeast corner of First and Jefferson streets, its only change in location has been a removal to the southwest corner at the same intersection. It is no longer owned by Mr. Wiencken, but is conducted as a stock company with John R. Norris as



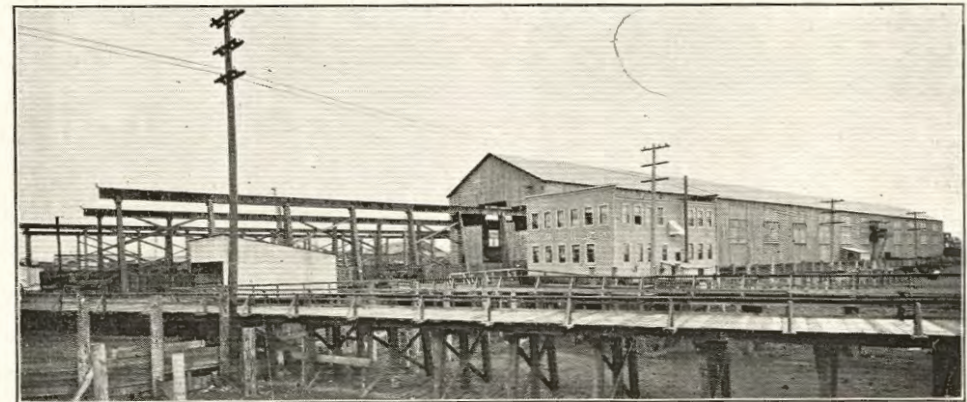
B. F. DOWELL

fair grounds. His work was so good that at the close of the exposition his commission as battalion chief was continued and he was put in charge of the south district. His next promotion was to be chief on the death of the late Chief Campbell.

Since Mr. Dowell became chief, a large



STEEL FRAME WORK OF ONE OF PORTLAND'S NEW STORE BUILDINGS, THAT OF MEIER & FRANK CO. MATERIAL SUPPLIED BY THE NORTHWEST STEEL CO.



4383

NORTHWEST STEEL COMPANY

The new plant of the Northwest Steel Company, Portland, Oregon, was completed early in 1914. It covers nine acres of ground, extending from rail lines to dock. A complete system of traveling cranes facilitates prompt handling of steel to

and from vessels and cars. The output comprises all classes of fabricated structural steel for buildings and bridges, tanks and towers, with an approximate capacity of 2000 tons per month. A stock of 7000 tons of structural shapes, plates and bars insures prompt delivery.