

NE 135th Avenue & Prescott Court Local Improvement District

Final Assessment Hearing

NE 135th Ave. & Prescott Ct.
Local Improvement District
Project

FINAL ASSESSMENT HEARING

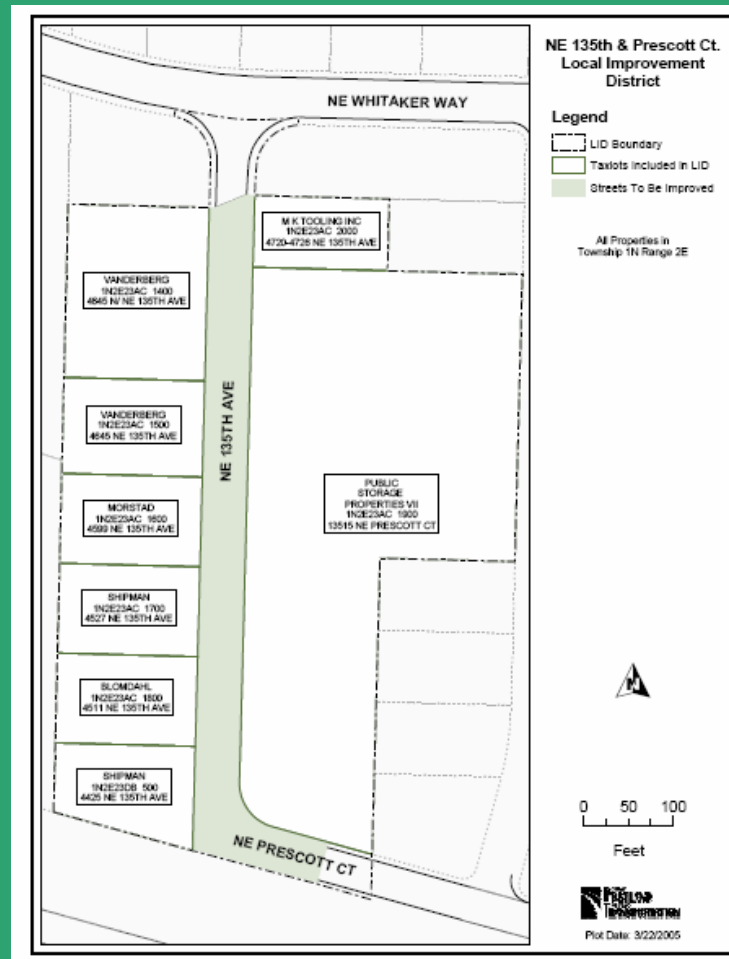
Portland Office of Transportation

April 9, 2008

NE 135th Avenue & Prescott Court Local Improvement District

Final Assessment Hearing

Project Map



NE 135th Avenue & Prescott Court Local Improvement District

Final Assessment Hearing

Intensive Use of Street in Commercial Area



NE 135th Avenue & Prescott Court Local Improvement District

Final Assessment Hearing

NE 135th Avenue Prior to Construction



NE 135th Avenue & Prescott Court Local Improvement District

Final Assessment Hearing

NE 135th Avenue After Construction



NE 135th Avenue & Prescott Court Local Improvement District

Final Assessment Hearing

NE Prescott Court Prior to Construction



NE 135th Avenue & Prescott Court Local Improvement District
Final Assessment Hearing

NE Prescott Court After Construction



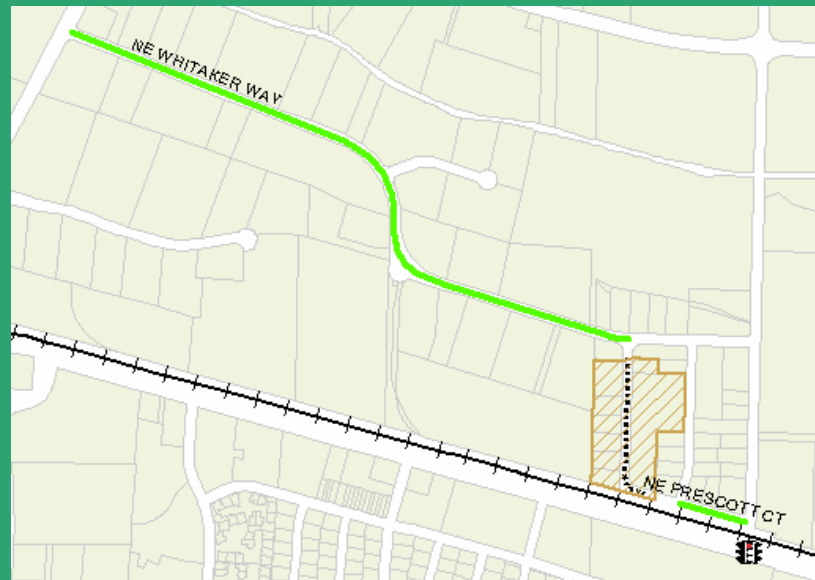
IMPROVED EGRESS

NE 138th Avenue & Sandy Blvd. Intersection

- Railroad, congestion hinders Prescott Ct. access

NE 122nd Avenue & Whitaker Way Intersection

- Signal will be turned on next month
- No cost to property owners in this LID for signal



PROJECT COSTS

Estimate at Local Improvement District Formation

- Estimate of \$518 per abutting linear foot

Estimate at Local Improvement District Final Assessment

- Actual cost of \$366 per abutting linear foot
- Savings range from \$12K to \$106K per property