

# Hire Site



# HIRE SITE TIMELINE AND WORK PLAN JULY 2007- MARCH 2008

<b>JULY 2007</b>	<b>ACTION</b>	<b>TIME &amp; LOCATION</b>
July 10	General Meeting- Timeline and Work Plan	Completed
July 12-30	Stakeholder Assessments & one-on-one meetings	Completed
July 12-30	Job Seeker Assessments	Completed
<b>AUGUST 2007</b>		
August 1	General Meeting- Assessment Summary	Completed
August 9	Focus Group	Completed
August 15	Focus Group	Completed
August 19	Focus Group	Completed
August 19-31	Feasibility Analysis of potential sites	Completed
<b>SEPTEMBER 2007</b>		
September 5	General Meeting- Feasibility Analysis & Focus Group results	Completed
September 6-15	One-on-one updates with stake holders	Ongoing

# HIRE SITE TIMELINE AND WORK PLAN JULY- MARCH 2008

<b>OCTOBER 2007</b>		
October 9	Grant RFP Released	Completed
October 10	General Meeting- Project Update	Completed
<b>NOVEMBER 2007</b>		
November 9	Grant RFP Due	Completed
November 10 – December 12	Review Proposals and selection of finalist, interviews	Completed
<b>DECEMBER 2007</b>		
December 12	Begin Lease negotiations	Ongoing
December 17	Begin Grant negotiations	Ongoing
December 18	Issue of Intent to Award Grant	Completed
December 26	Begin Good Neighbor Agreement process	Ongoing

# HIRE SITE TIMELINE AND WORK PLAN JULY 2007- MARCH 2008

<b>JANUARY 2008</b>		
January	Continue Grant negotiations	Completed
January 3	General Meeting / Potential Neighbor Meeting with Mayor regarding Good Neighbor Agreement	Completed
<b>February 2008</b>		
February 1-28	Continue Grant negotiations	Completed
February 28	Second Potential Neighbor Meeting regarding Good Neighbor Agreement	Completed
<b>March 2008</b>		
March	Continue Good Neighbor Agreement process	Ongoing
March 5	City Council considers Grant Agreement	Time: 9:30 a.m. City Council Chambers City Hall
March 6	Upon Council approval, execution of Grant Agreement	Pending
March 7-14	Continue lease negotiations, execute Lease Agreement	Ongoing
TBD	Third potential neighbor meeting regarding Good Neighbor Agreement	TBD

# Focus Group

---

## Goal:

To get feedback on key considerations and priorities for Hire Site.

- Each focus area concentrated on a key consideration for siting
- Each focus area listed considerations, criteria to be weighed and considered
- Reviewed in accordance with best practice recommendations

# Focus Group Areas

---

- **Focus area 1:**

*“Consideration for Minimum area”*

- **Focus Area 2:**

*“Physical accommodations”*

- **Focus area 3:**

*“Accessibility”*

- **Focus area 4:**

*“Minimizing Neighborhood Impacts”*

# Focus Group Minimal Siting Criteria

- **Build it right the first time**

---

- **Proximity to traffic lights and existing location**
- **Visible to employers**
- **Separate cars and pedestrian and not create congestion**
- **Circular drive not on street**
- **Bicycle racks**
- **Long-term solution and sustainable**
- **Unisex restrooms**
- **Meeting room**
- **Trash Dumpsters**
- **Separate traffic flow**
- **Sufficient lighting for safety**
- **Site needs to fit into the neighborhood**
- **Trees as buffers**
- **MAX access**
- **Easy freeway access**
- **Good access for driving in and driving out**

# Focus Group Minimal Siting Criteria

---

- ❑ Find a location that the workers could actually help build or customize
- ❑ Hours of operation from 6:00 am to 2:00 pm
- ❑ Good signage
- ❑ Limit sprawl
- ❑ Workers self-organized to do neighborhood clean-ups and neighborhood projects
- ❑ Keep constant dialogue between stakeholders, communication and respect
- ❑ Create a space that the community takes a part in, invite the community to be a part of, create a design for the community
- ❑ Remove negative influences and co-mingling of those influences
- ❑ Make sure building fits into the neighborhood
- ❑ Hours of operation from 6:00am-2:00pm
- ❑ Do not impact street parking
- ❑ Limit traffic and noise at night





NE MARTIN LUTHER KING

NE EVERETT ST

NE GRAND AVE

Image © 2007 Metro, Portland Oregon  
© 2007 Europa Technologies  
© 2007 Sanborn

© 2006 Google™



NE EVERETT ST

NE MLK

NE DAVIS


NE GRAND

Image © 2007 Metrō, Portland Oregon  
© 2007 Europa Technologies  
© 2007 Sanborn

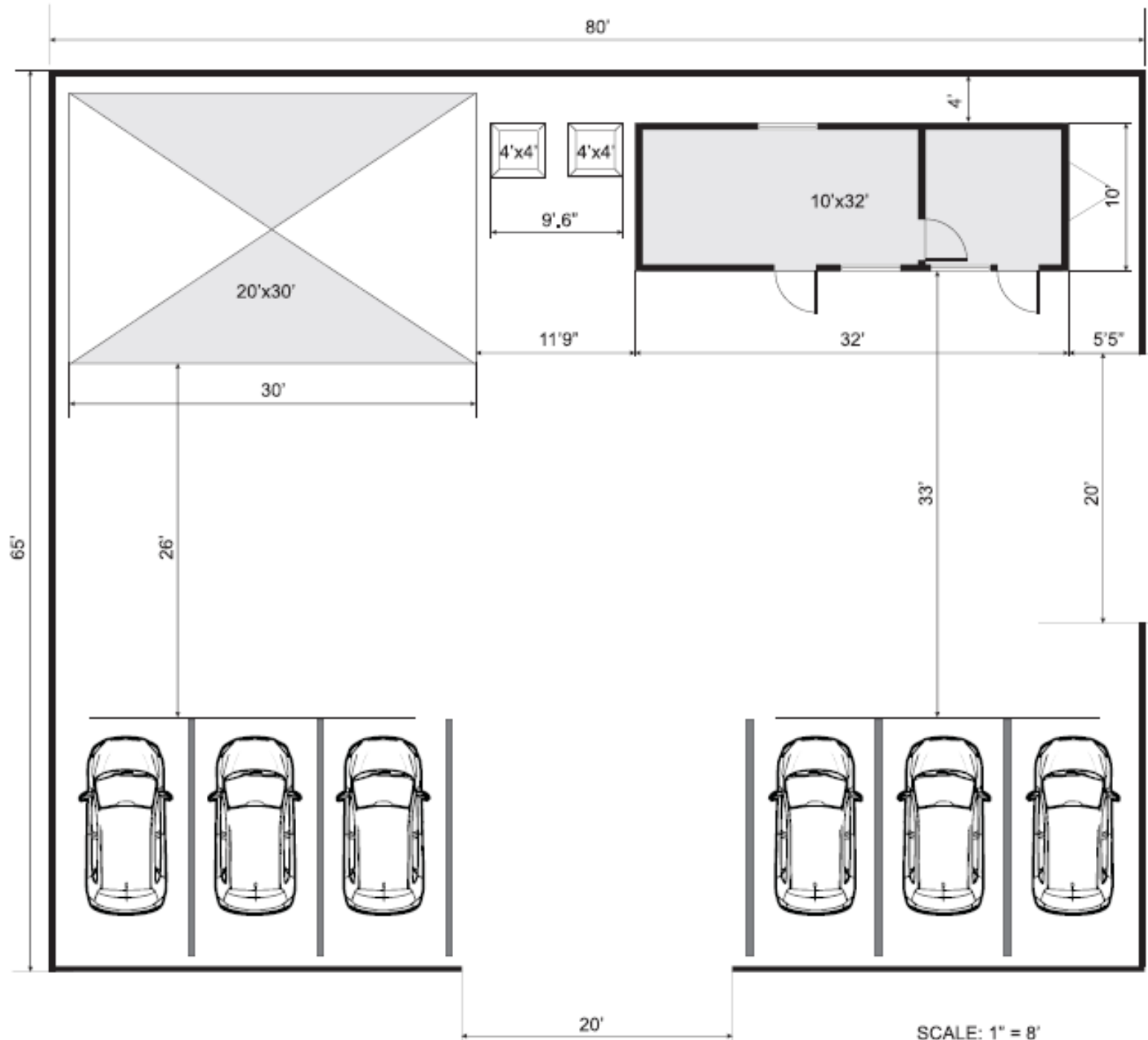
© 2006 Google™

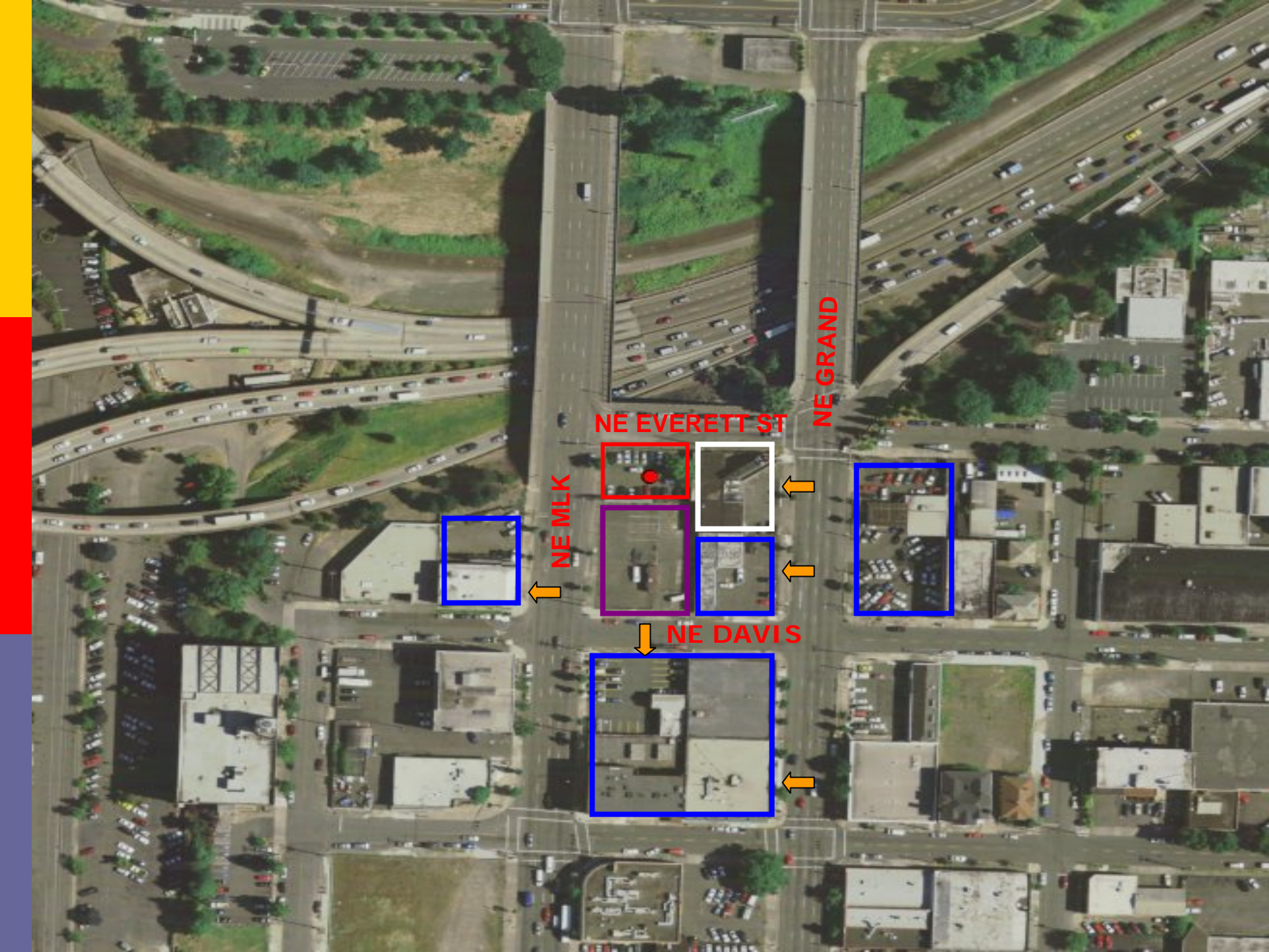
Pointer 45°31'29.96" N 122°39'41.64" W elev 46 ft Streaming ||||| 100%

Eye alt 840 ft

- 
- An aerial photograph of a city street intersection. A red rectangular box highlights a parking lot area in the center of the intersection. The parking lot contains several cars of various colors. The surrounding area includes buildings, trees, and other streets. A compass rose is visible in the top right corner of the image.
- Proximity to traffic lights and existing location
  - Visible to employers
  - Separate cars and pedestrian and not create congestion
  - Circular drive not on street
  - Separate traffic flow
  - Sufficient lighting for safety
  - Trees as buffers

- MAX access
- Easy freeway access
- Good access for driving in and driving out
- Limit sprawl
- Remove negative influences and co-mingling of those influences
- Do not impact street parking





NE EVERETT ST

NE GRAND

NE MLK

NE DAVIS

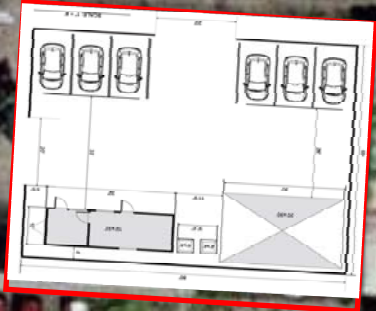


Image © 2007 Metro, Portland Oregon  
© 2007 Europa Technologies  
© 2007 Sanborn

©2006 Google™

