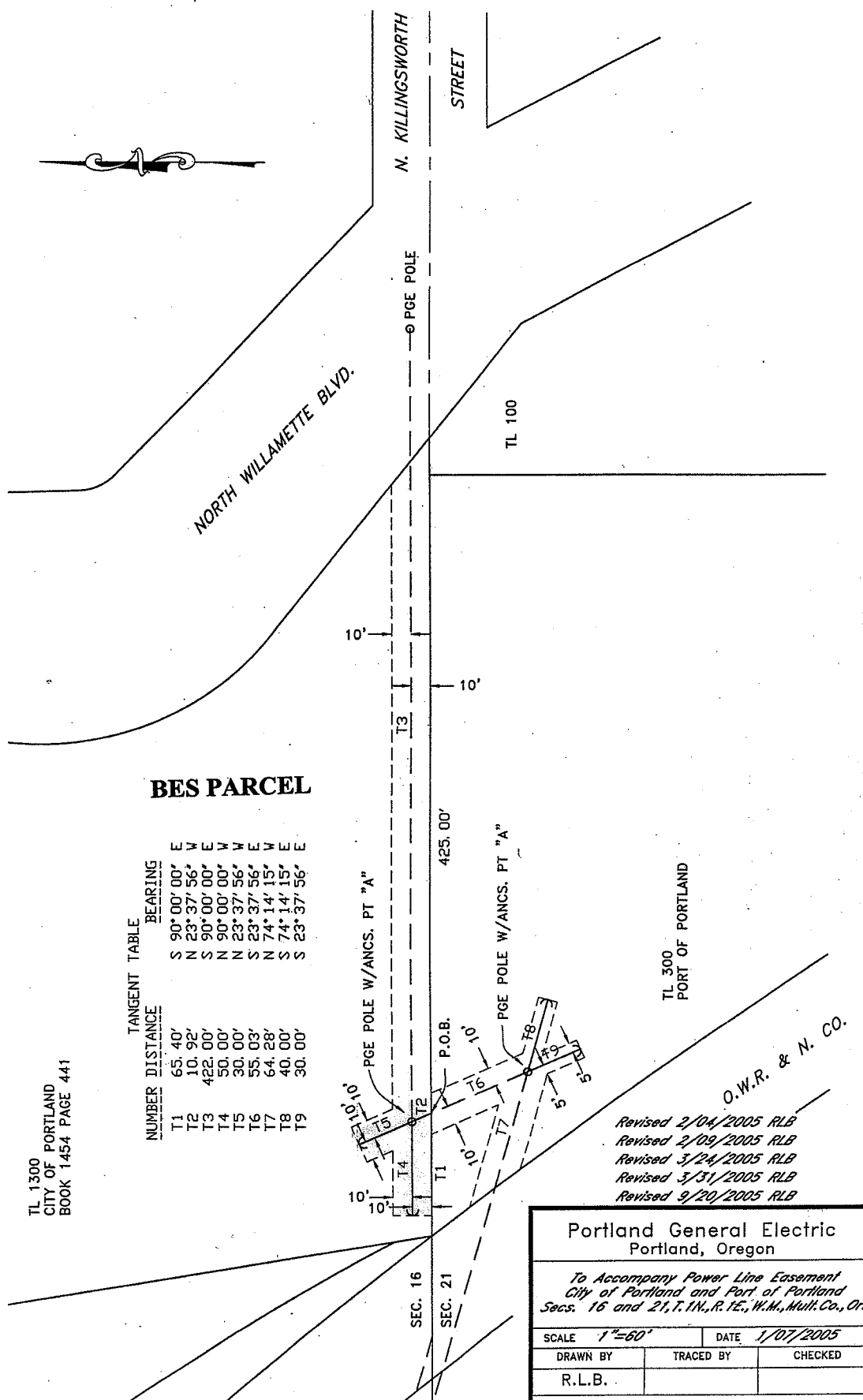


EXHIBIT B



BES PARCEL

NUMBER	TANGENT DISTANCE	BEARING
T1	65.40'	S 90° 00' 00" E
T2	10.92'	N 23° 37' 56" W
T3	422.00'	S 90° 00' 00" E
T4	50.00'	N 90° 00' 00" W
T5	30.00'	N 23° 37' 56" W
T6	55.03'	S 23° 37' 56" E
T7	64.28'	N 74° 14' 15" W
T8	40.00'	S 74° 14' 15" E
T9	30.00'	S 23° 37' 56" E

TL 1300
CITY OF PORTLAND
BOOK 1454 PAGE 441

*Revised 2/04/2005 RLB
Revised 2/09/2005 RLB
Revised 3/24/2005 RLB
Revised 3/31/2005 RLB
Revised 9/20/2005 RLB*

Portland General Electric Portland, Oregon		
<i>To Accompany Power Line Easement City of Portland and Port of Portland Secs. 16 and 21, T. 1N., R. 1E., W.M., Mult. Co., Or.</i>		
SCALE	1"=60'	DATE
DRAWN BY	TRACED BY	CHECKED
R.L.B.		