



MULTIWAYZ LLC

WWW.MULTIWAYZ.COM

AERIAL VIEW



A CULTURAL GEM



Cleve Williams began playing jazz trombone after listening to the juke box at Slaughter's place, circa 1940s-50s.

- Bob Dietsche



Underneath the jazz club was a pool hall where you could find Ed Slaughter, jazz historian and honorary mayor of Williams Avenue. Musicians remember him most for his jukebox, known as the "canned ham," where many would-be jazz players heard their first jazz record.

- Bob Dietsche



In April of 1953, Duke Ellington celebrated his birthday there by sitting in on piano with some of Portland's most talented musicians.

- Bob Dietsche



THE LEGACY OF THE DUDE RANCH



Chas. "Pat" Patterson

Louis Armstrong

W.M. "Tree Top" Dodson

ARMSTRONG AT THE DUDE WITH RANCH FOUNDERS



DR. KEN YEANG



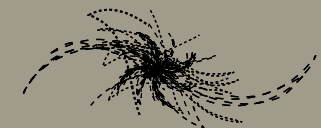
is an internationally renowned architect whose firm Hamzah & Yeang specializes in the design and master planning of “green” or ecologically responsive large buildings and sites. The firm has offices in London (UK), Kuala Lumpur (Malaysia), Beijing and Shenzhen (China), and associate offices in Singapore, Australia and Germany.



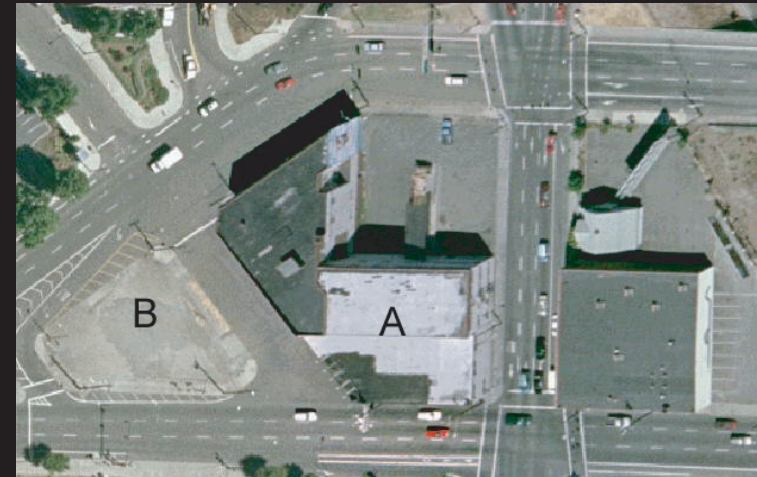
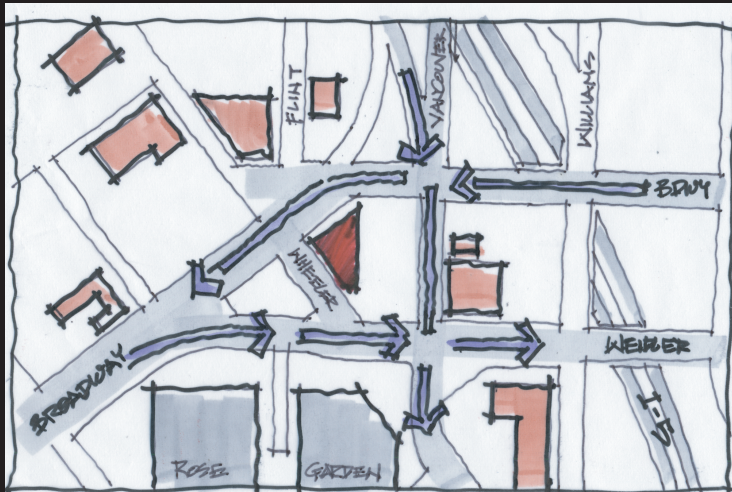
DR. KEN YEANG

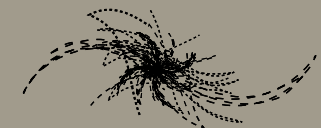
The Singapore Government awarded Ken's newly completed National Library Building in Singapore (a whopper at USD120 million construction costs), their Green Mark Platinum award, which is the highest award given for green and sustainable building in Singapore.



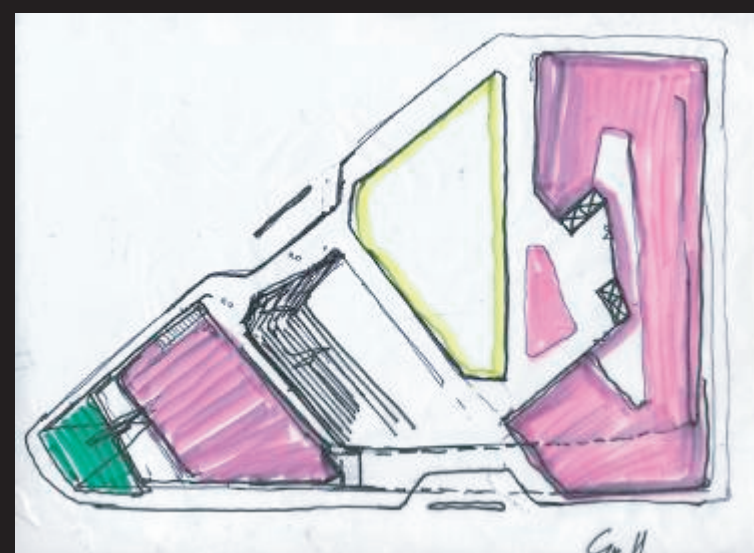
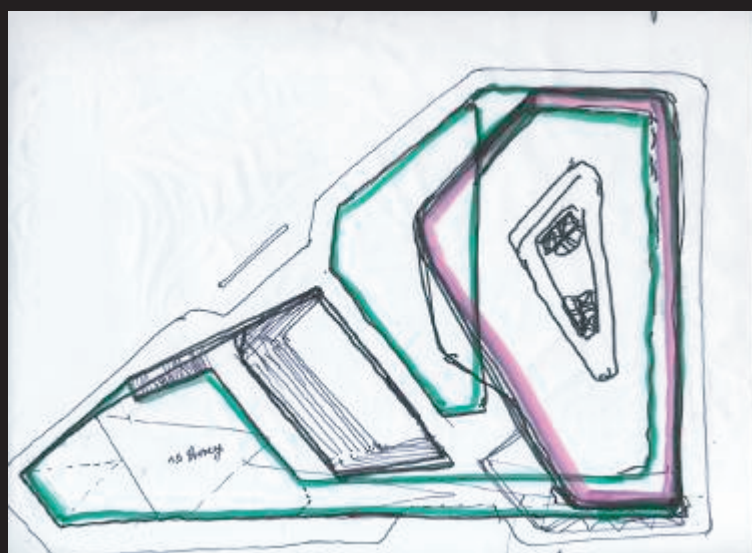
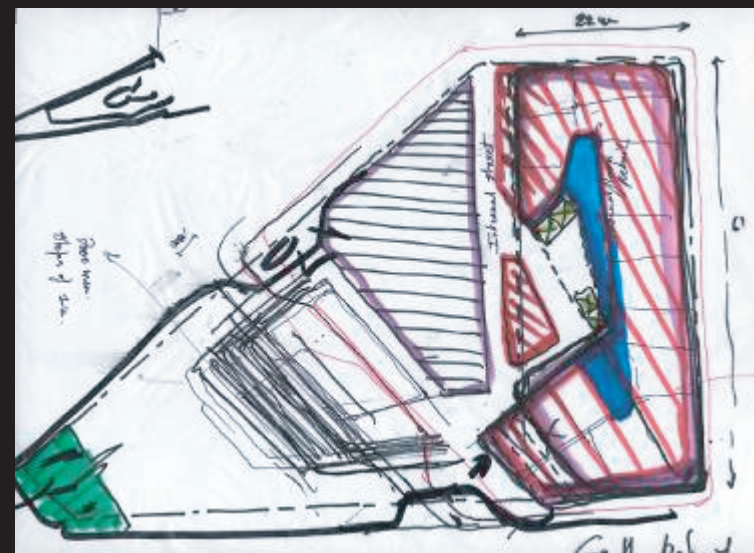
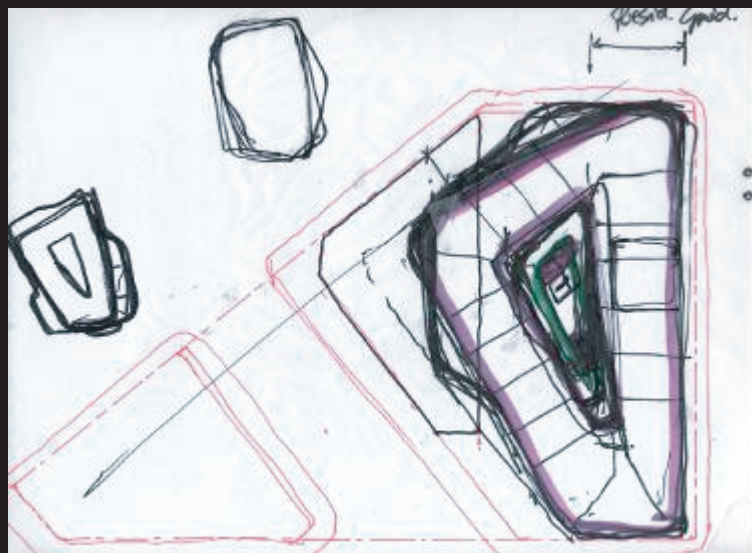


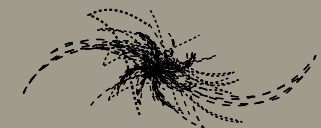
THE JUMPTOWN SITE



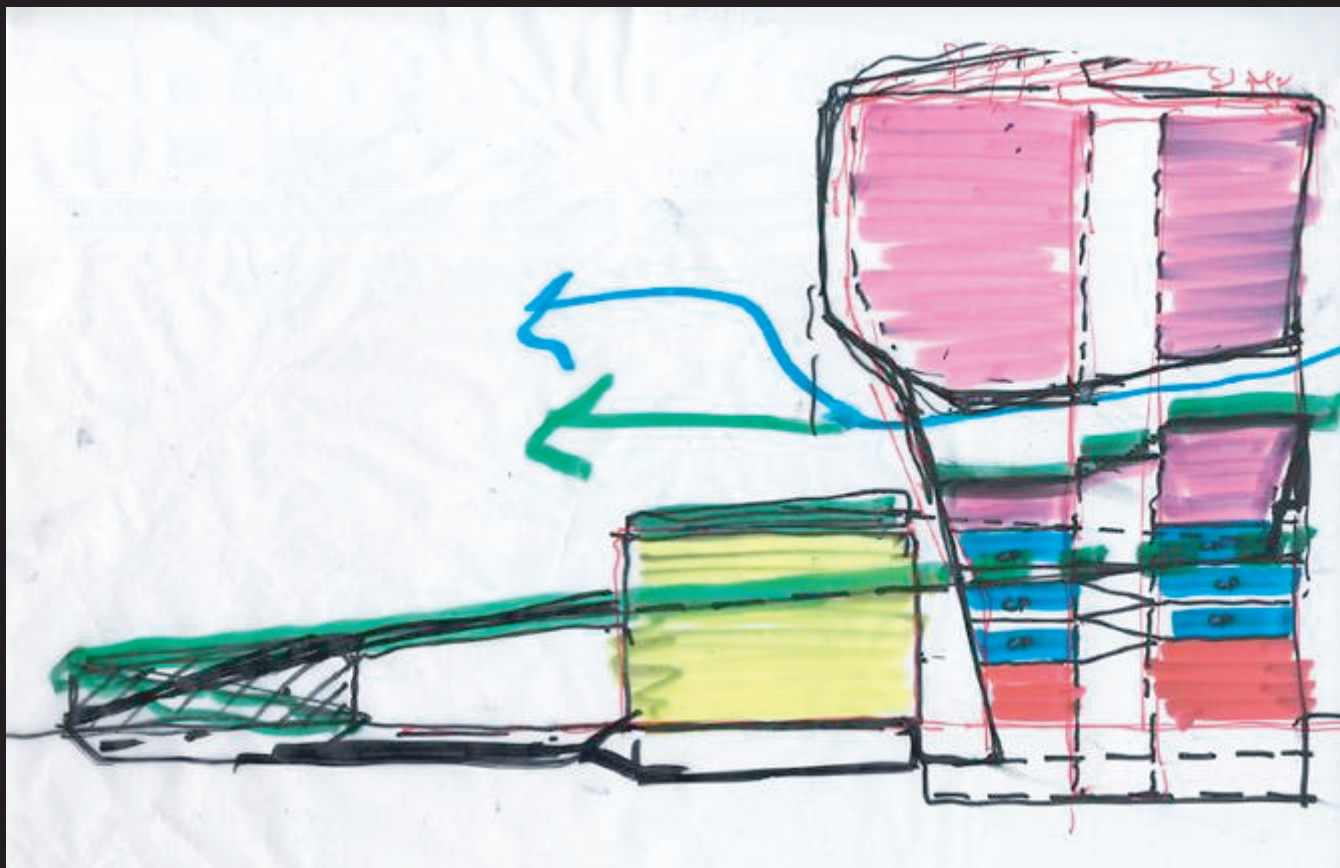


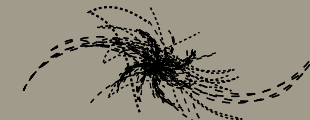
CONCEPT SKETCHES





CONCEPT SKETCHES





MULTIWAYZ LLC



Jumptown Tower, Portland for Multiwayz LLC
© T.R.Hamzah & Yeang Snd. Bhd. (May 2005)

JUMP TOWER

240 NE BROADWAY PORTLAND OREGON

Historic renovation of The Dude Ranch, and construction of 10 floor mixed use LEED Platinum building.

LIVE WORK

Priced at \$180k-\$225k

CONDO LOFTS

Priced at \$340k-\$880k

HISTORIC RENOVATION

DEVELOPMENT PROGRAM:

110 - UNITS HOUSING

140 - SPACES STRUCTURED PARKING

26,800 sqft - HISTORIC BUILDING

217,300 - TOTAL SQUARE FEET

CONVENIENCES:

ground floor retail - sustainable foods

office space - creative firms

historic - jazz club / brewery

eco-cell for entire building

excellent views

downtown and waterfront

mt. st. hellens

mt. hood

mt. adams

multiple roof gardens

central location

"bookend" to the pearl

"bookend" to elliot n/ne

"bookend" to rose quarter

portland street car

max

trimet

4 blocks from broadway bridge

6 blocks from river front

hi speed internet

close to freeways

SOLAR

RAINWATER RECYCLING

NATURAL VENTILATION

VEGETATION

SEWERAGE RECYCLING

