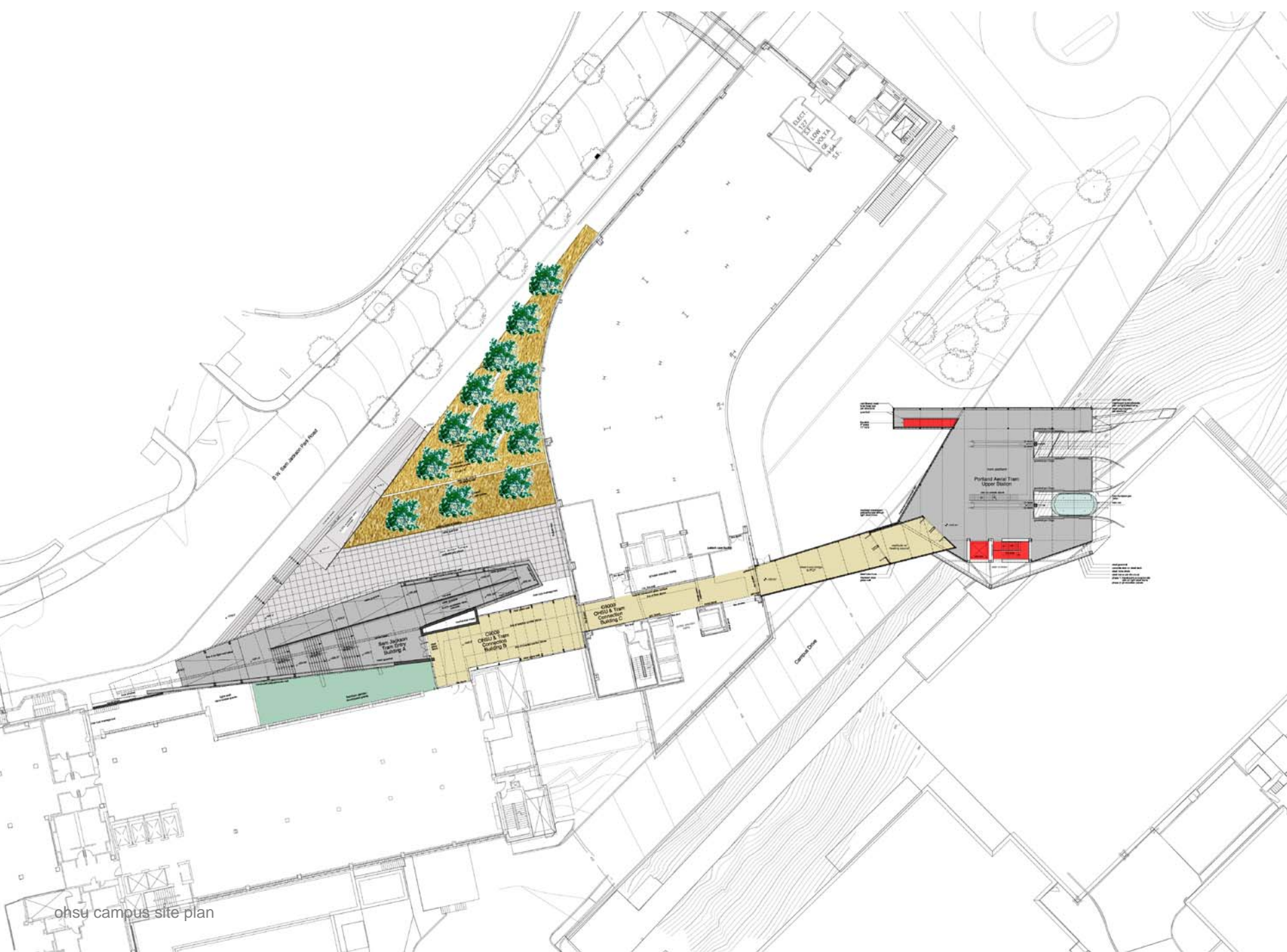




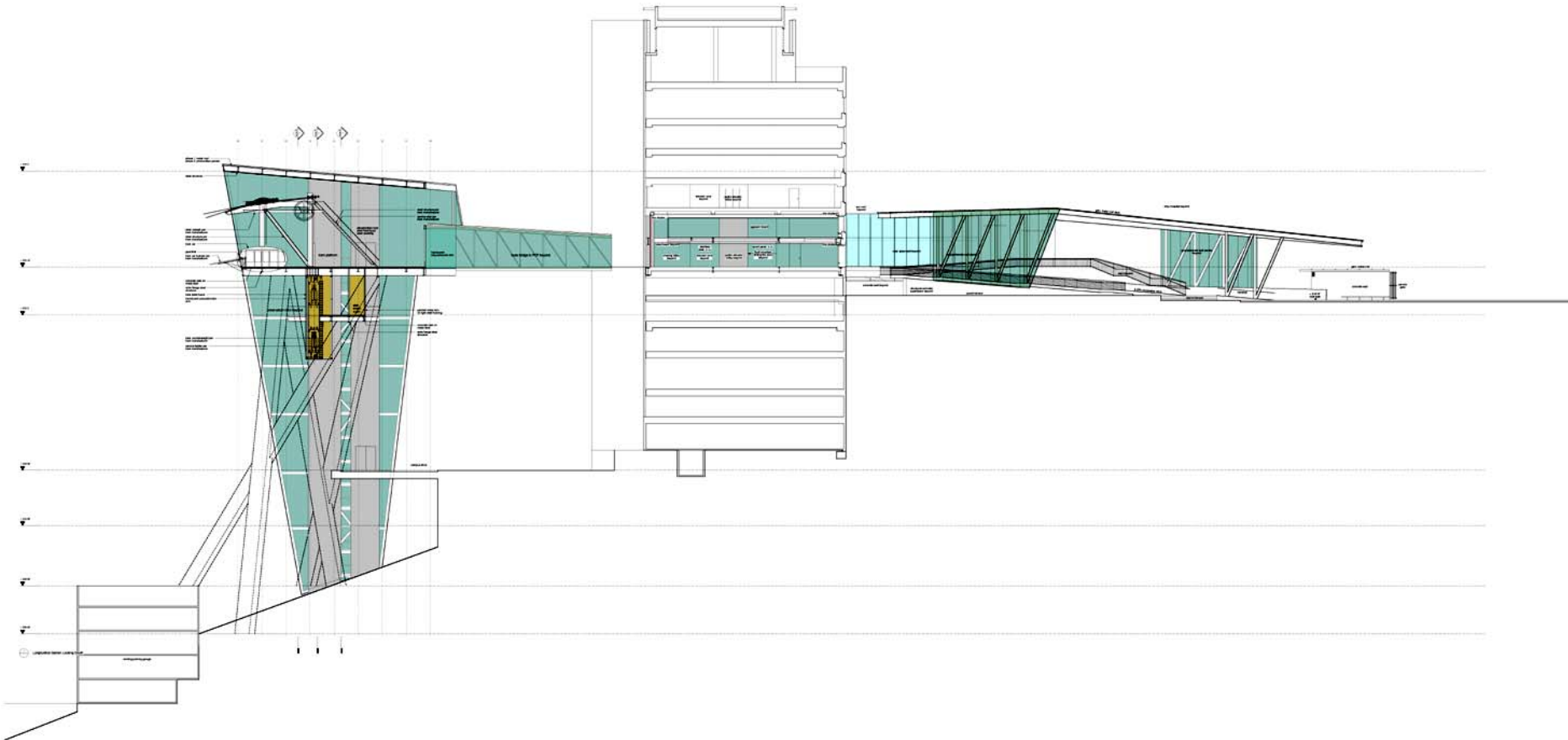
overall siteplan



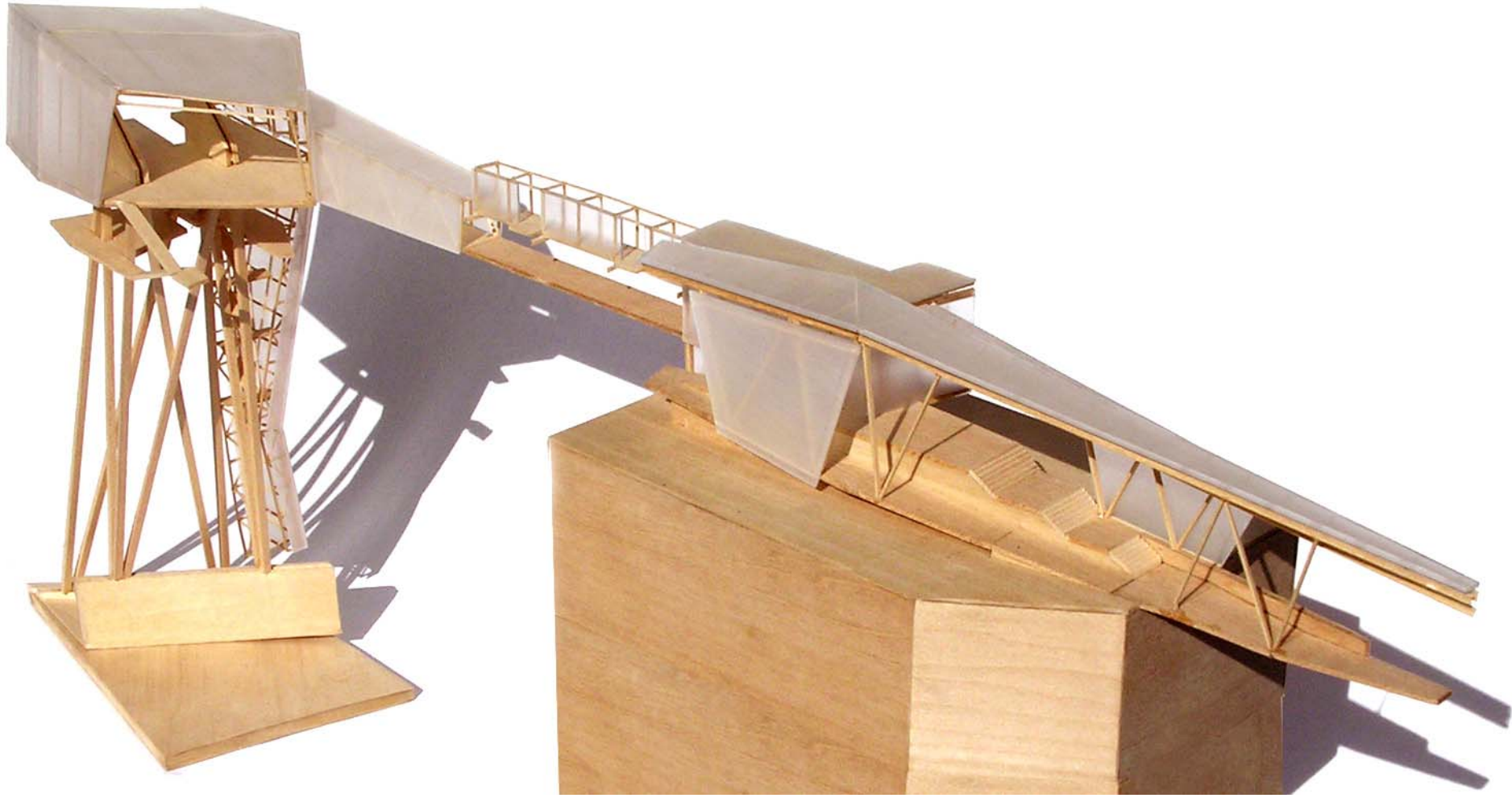
overall siteplan



ohsu campus site plan



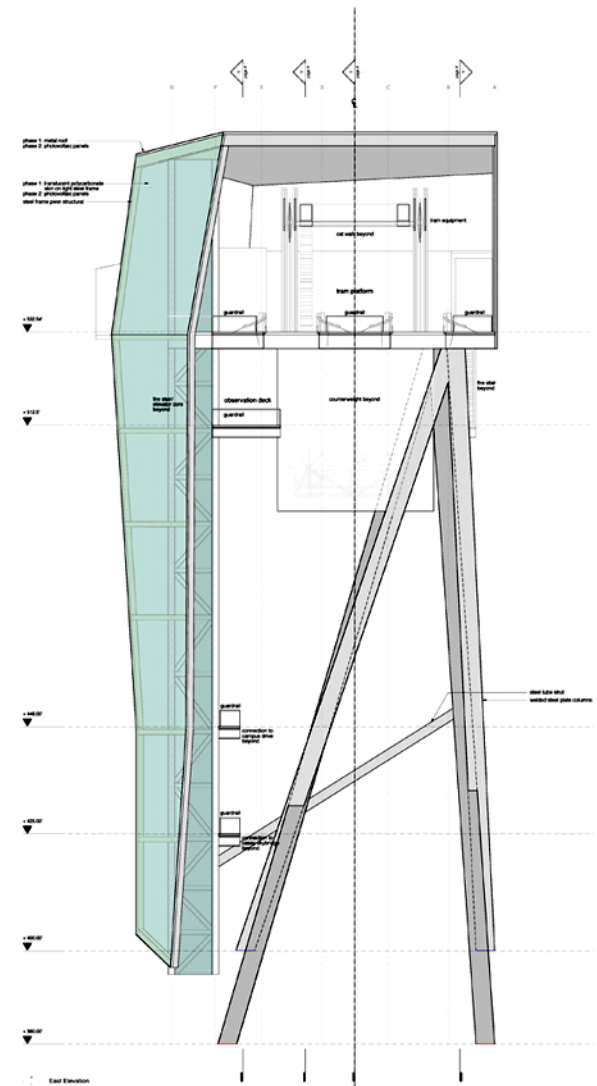
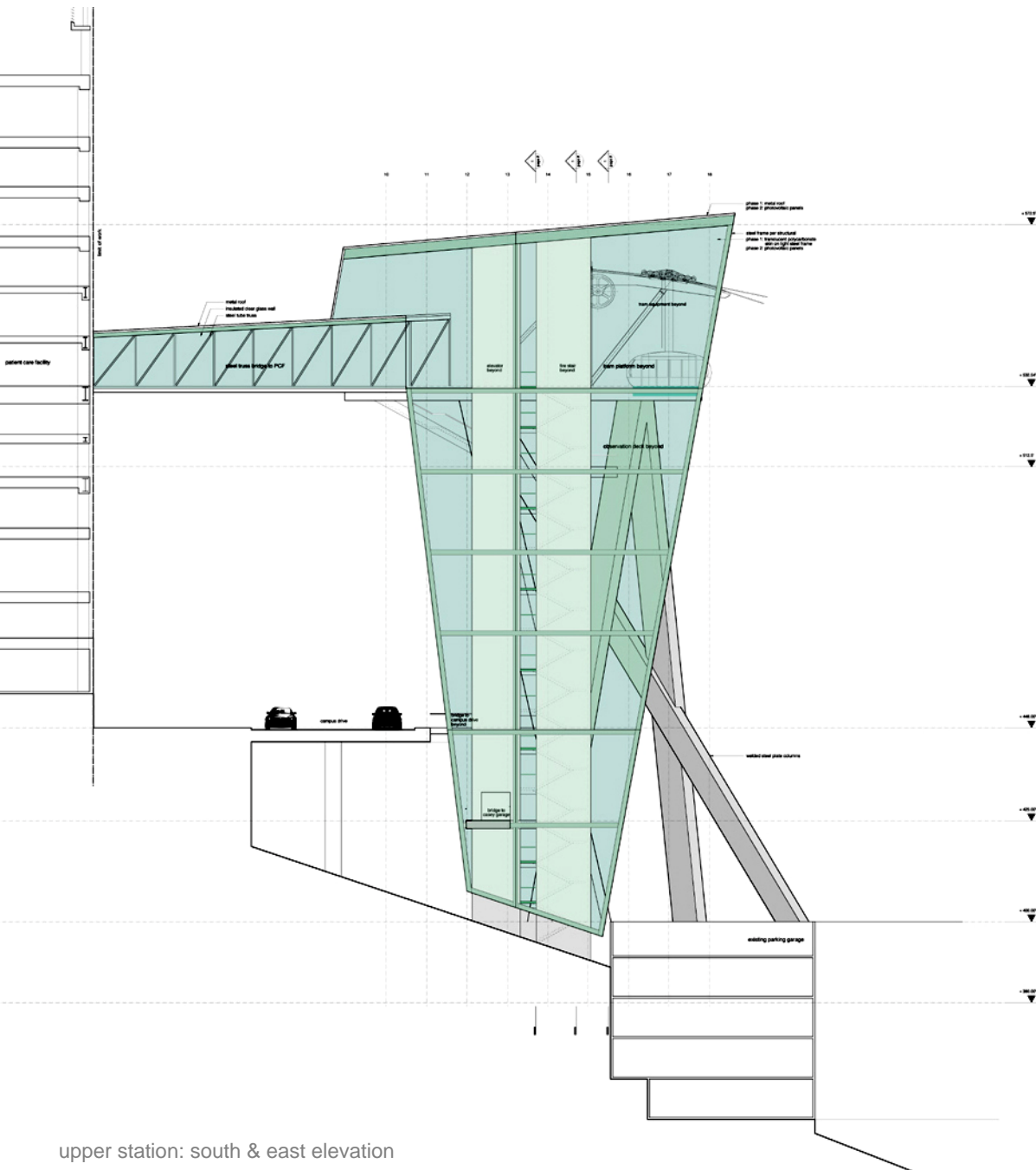
upper station: longitudinal section looking south



Sam Jackson tram entry & upper station



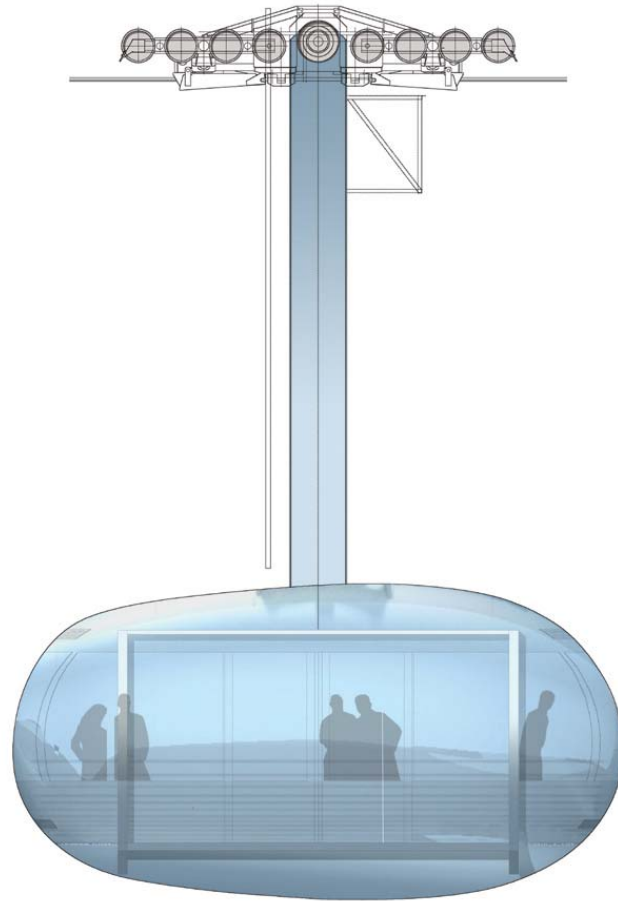
collage view looking east



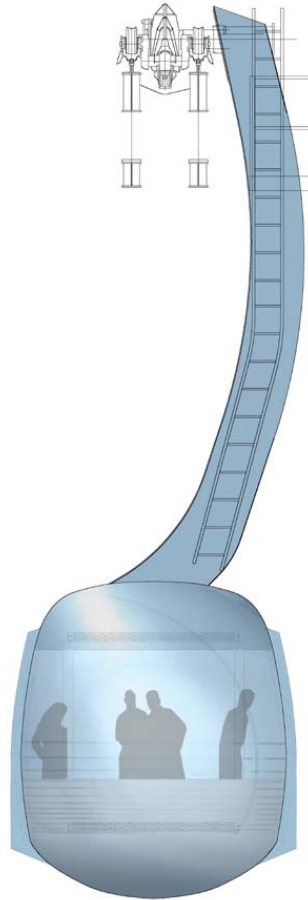
upper station: south & east elevation



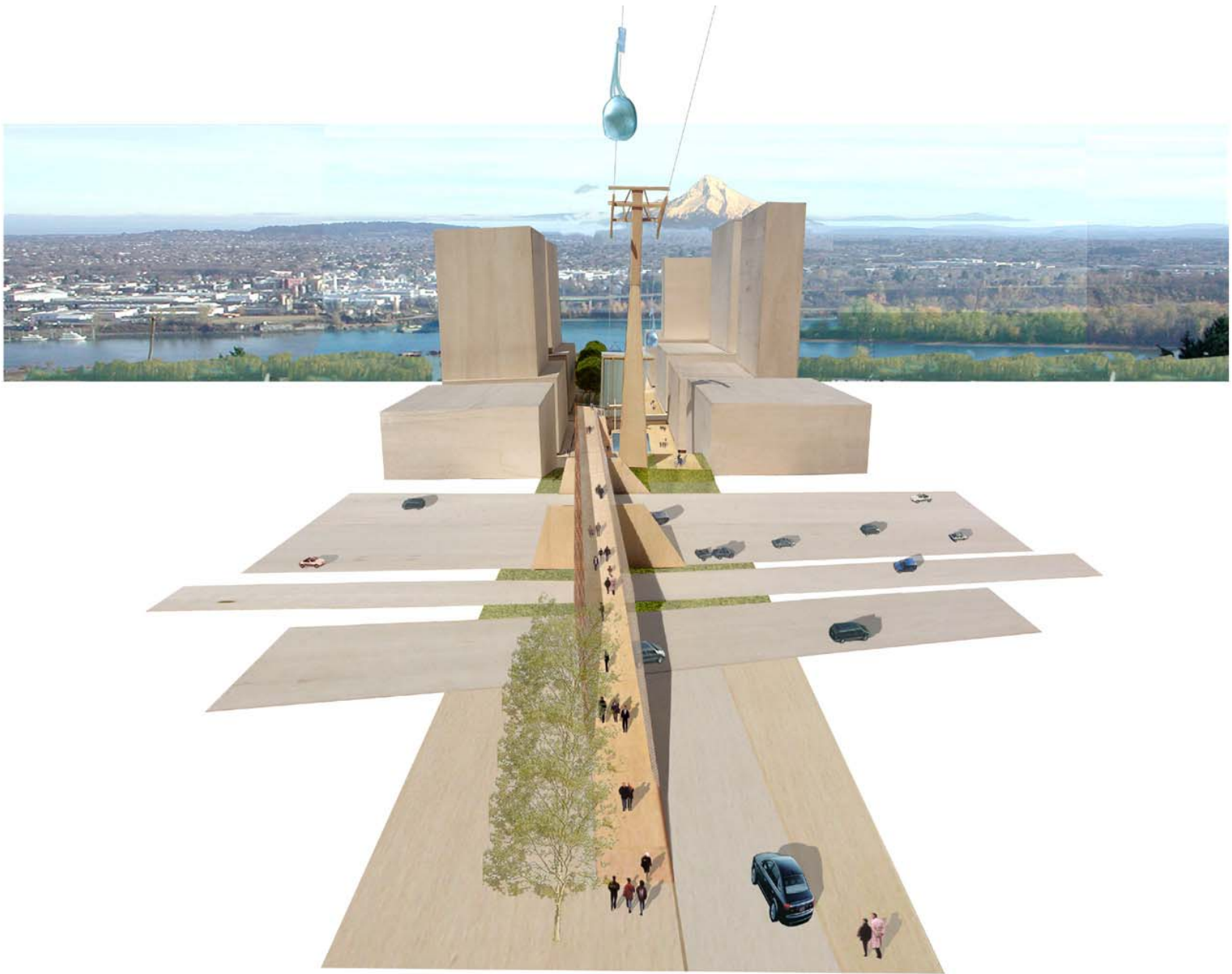
upper station: south elevation



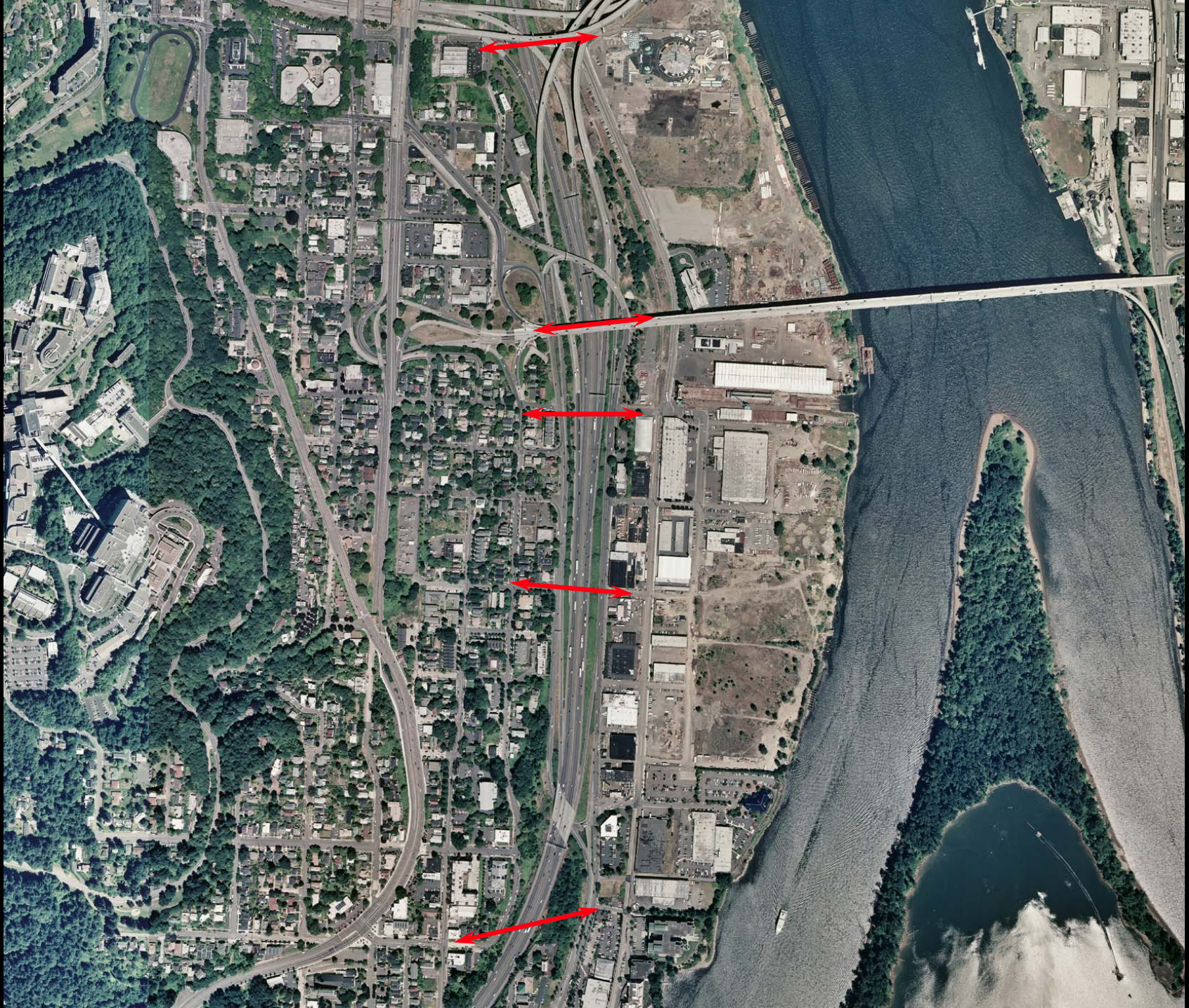
tram car: side elevation

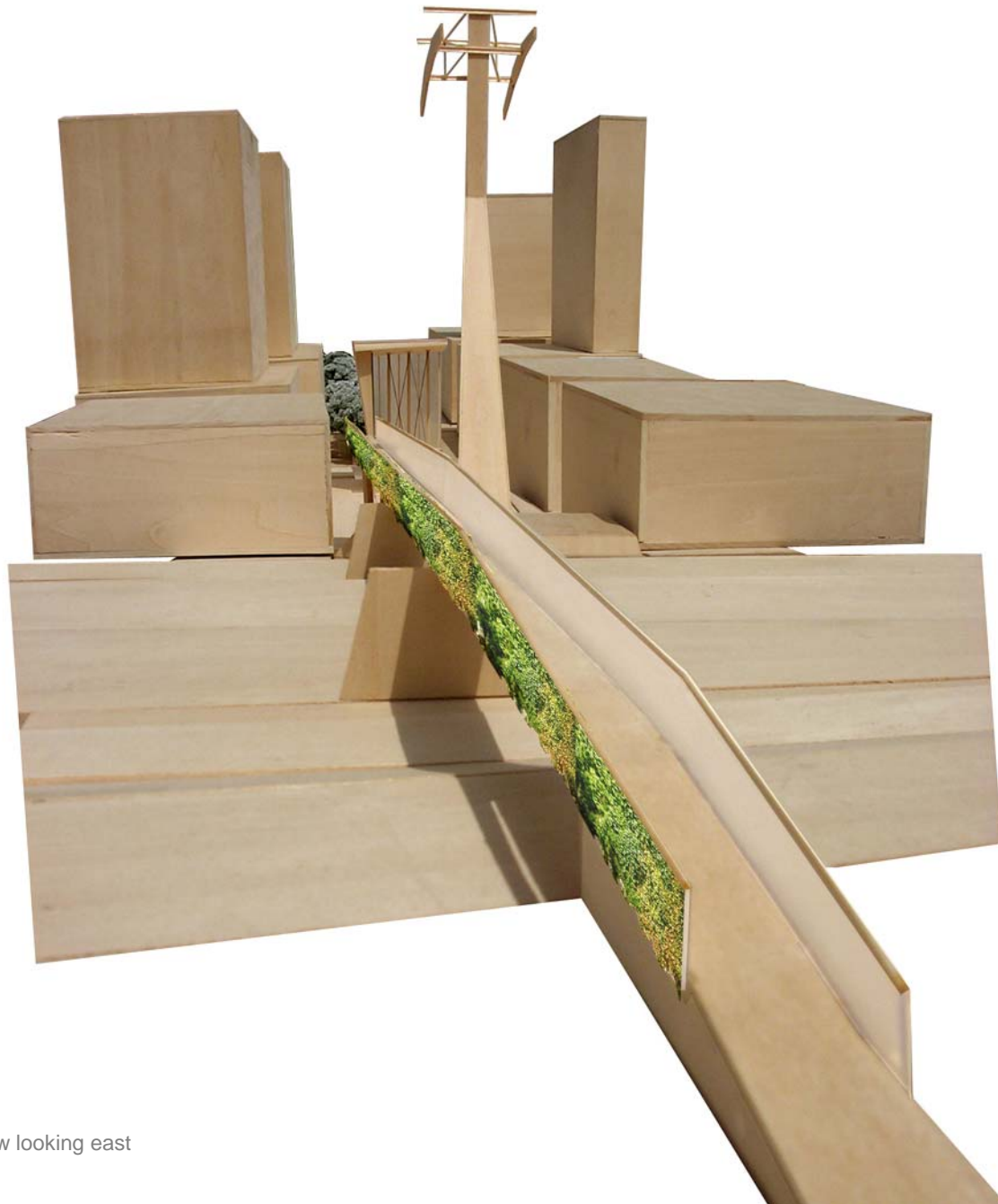


tram car: front elevation



collage of south waterfront looking east





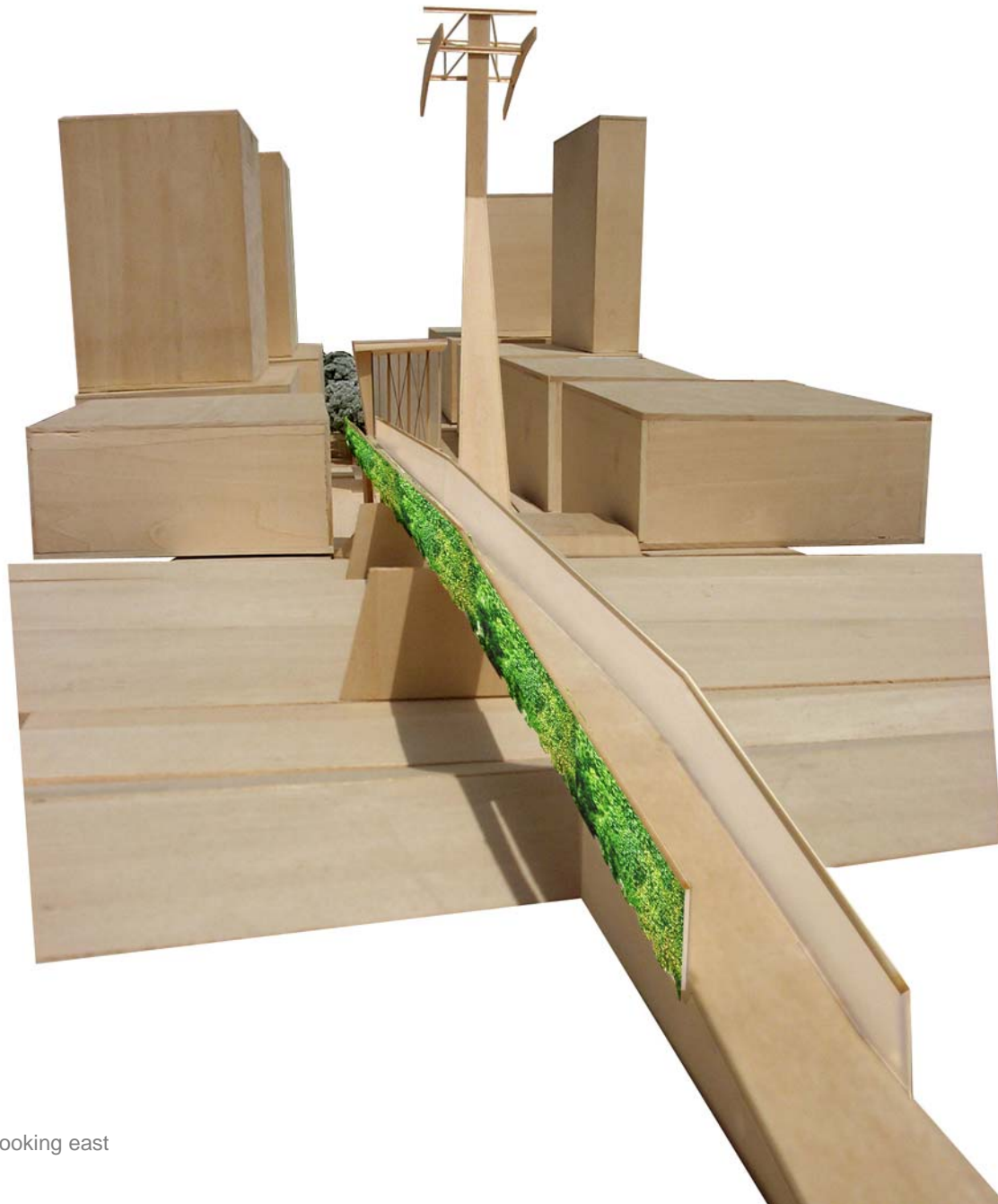
pedestrian bridge: summer view looking east



pedestrian bridge: autumn view looking east



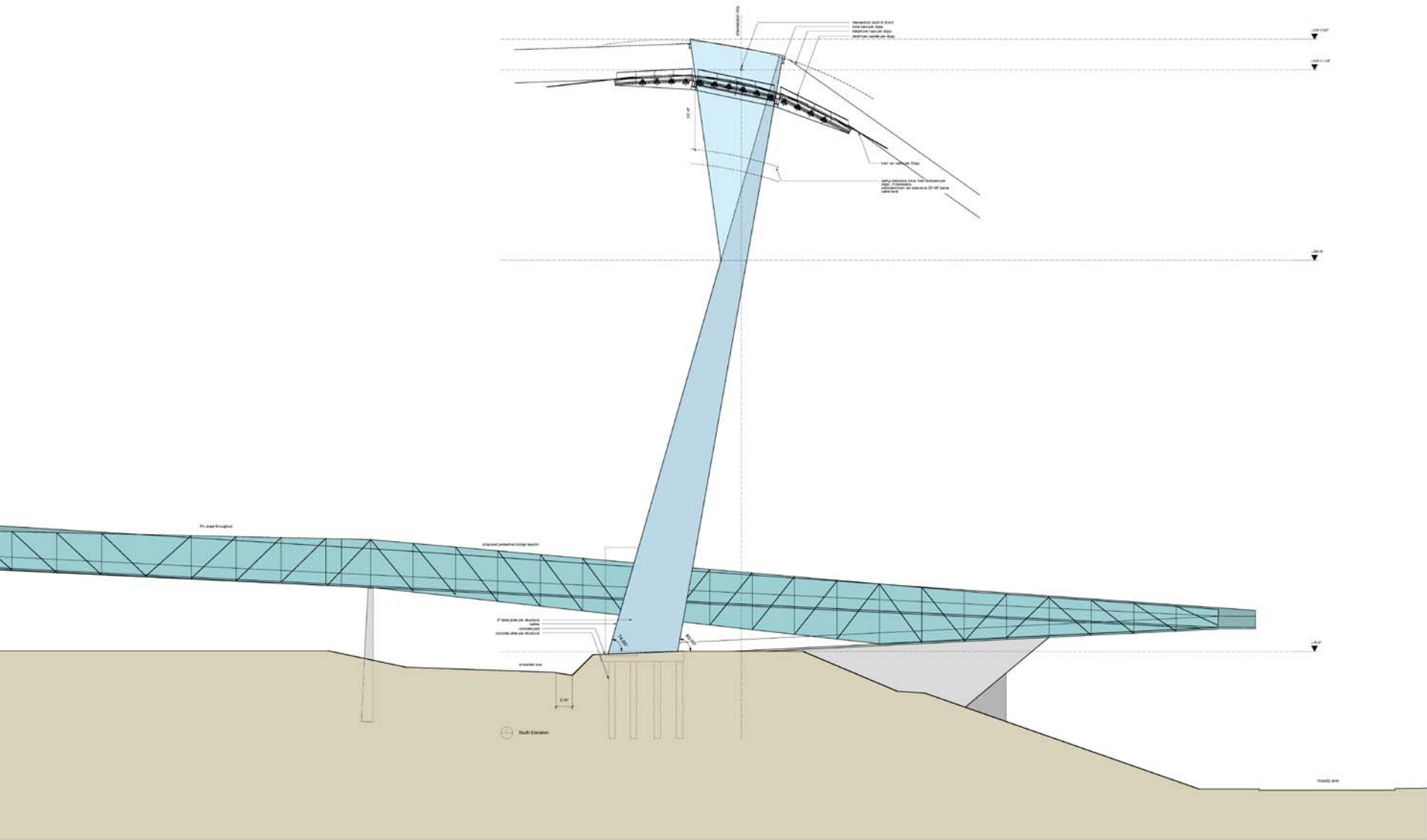
pedestrian bridge: winter view looking east



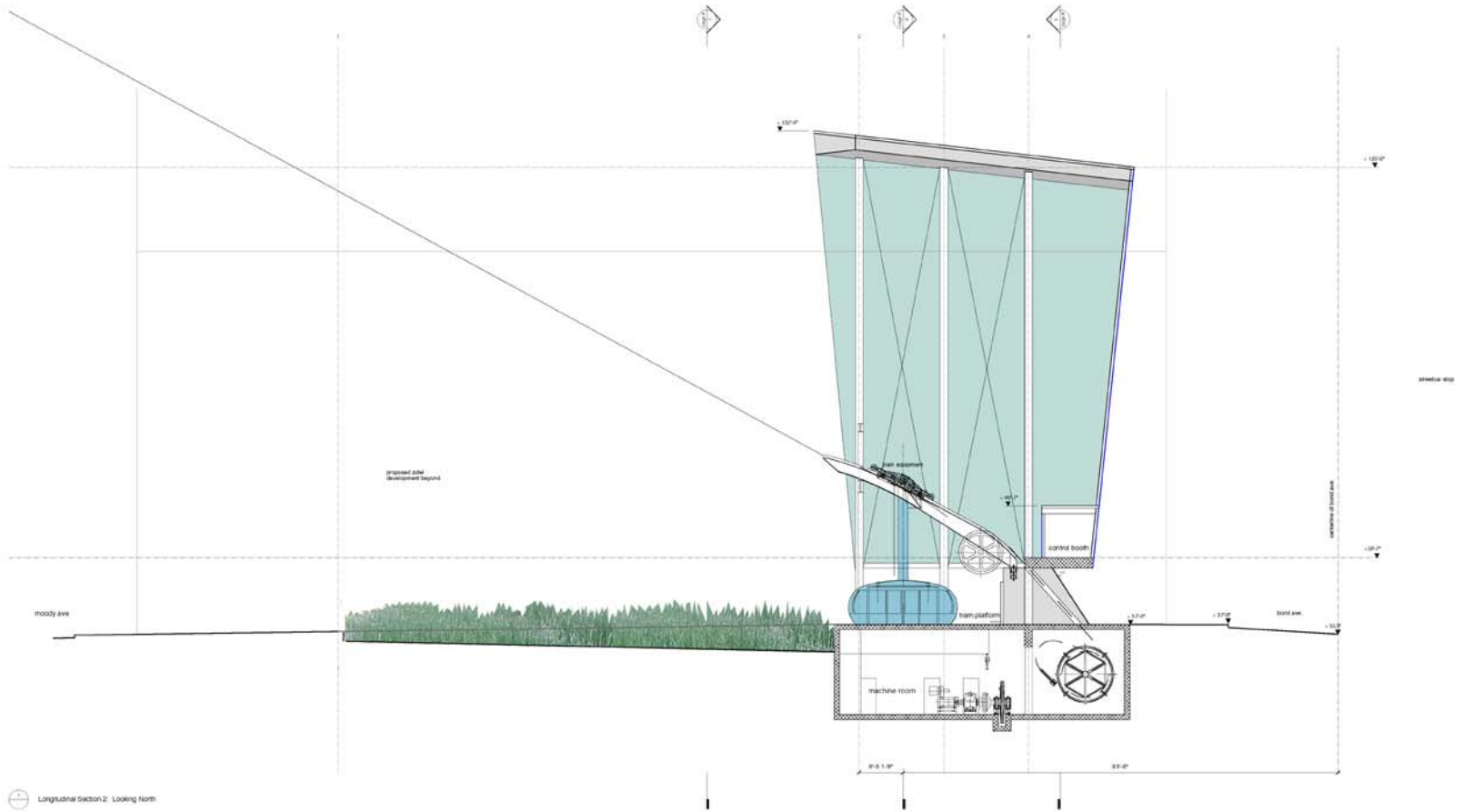
pedestrian bridge: spring view looking east



tram tower: view looking northwest



tram tower: south elevation



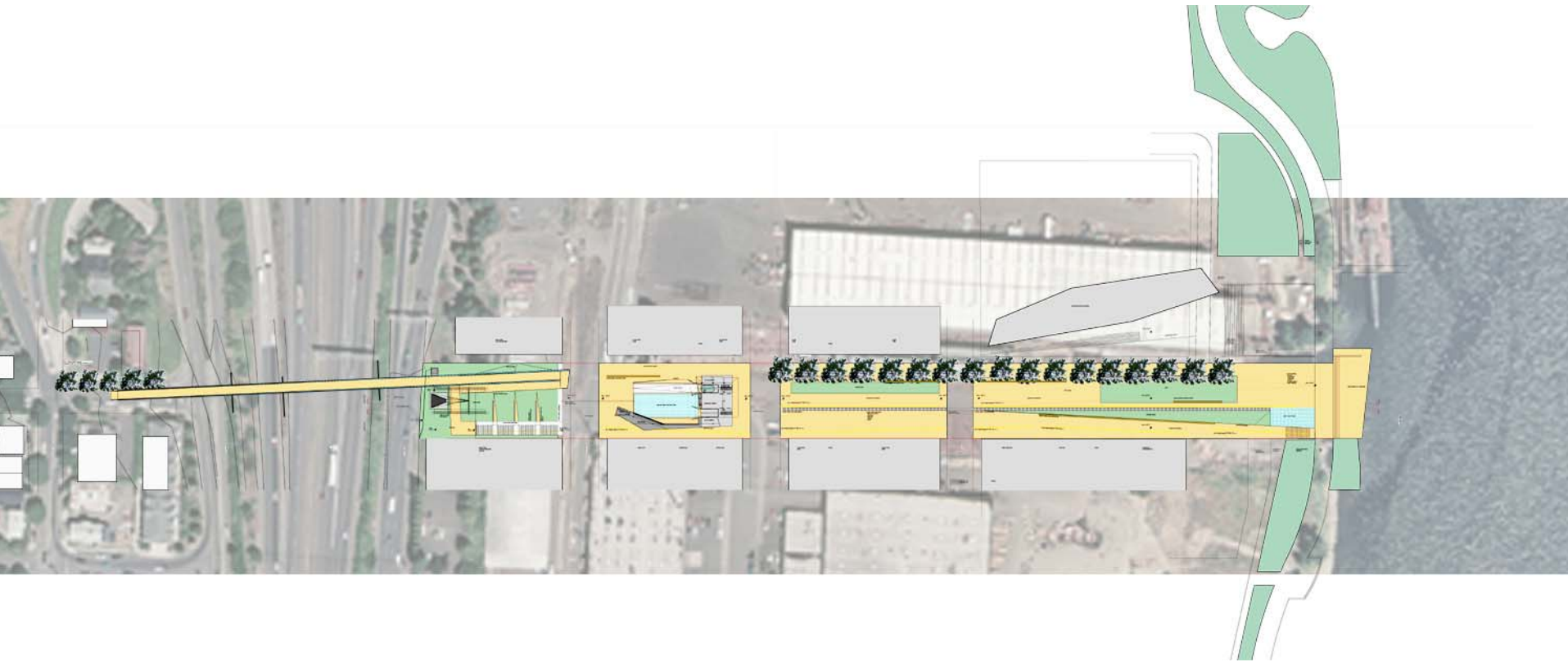
lower station longitudinal section looking north



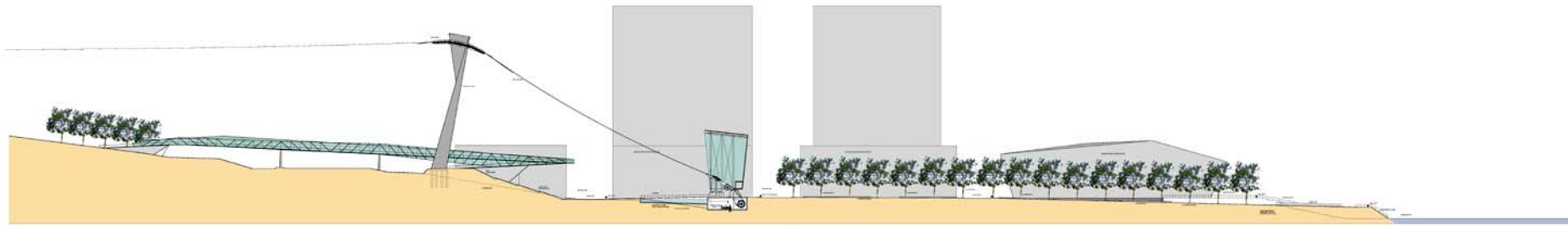
lower station: south elevation



lower station: northwest elevation



public street: gibbs street right of way studies
phase 3 diagram



public street: gibbs street right of way site section



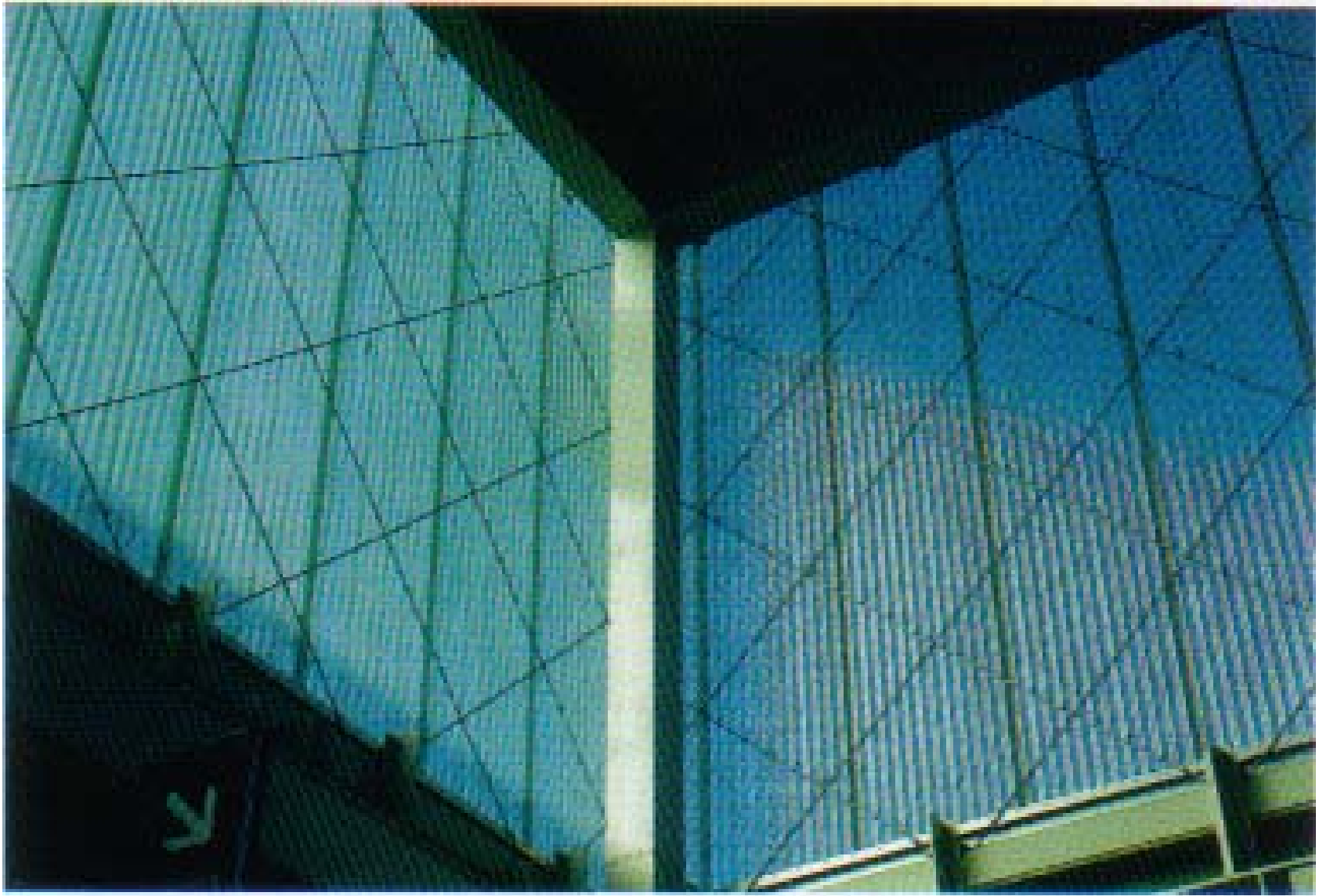
public street: gibbs street right of way studies
view looking east



public street: gibbs street right of way studies
Market view looking east



public street: gibbs street right of way studies
view looking west

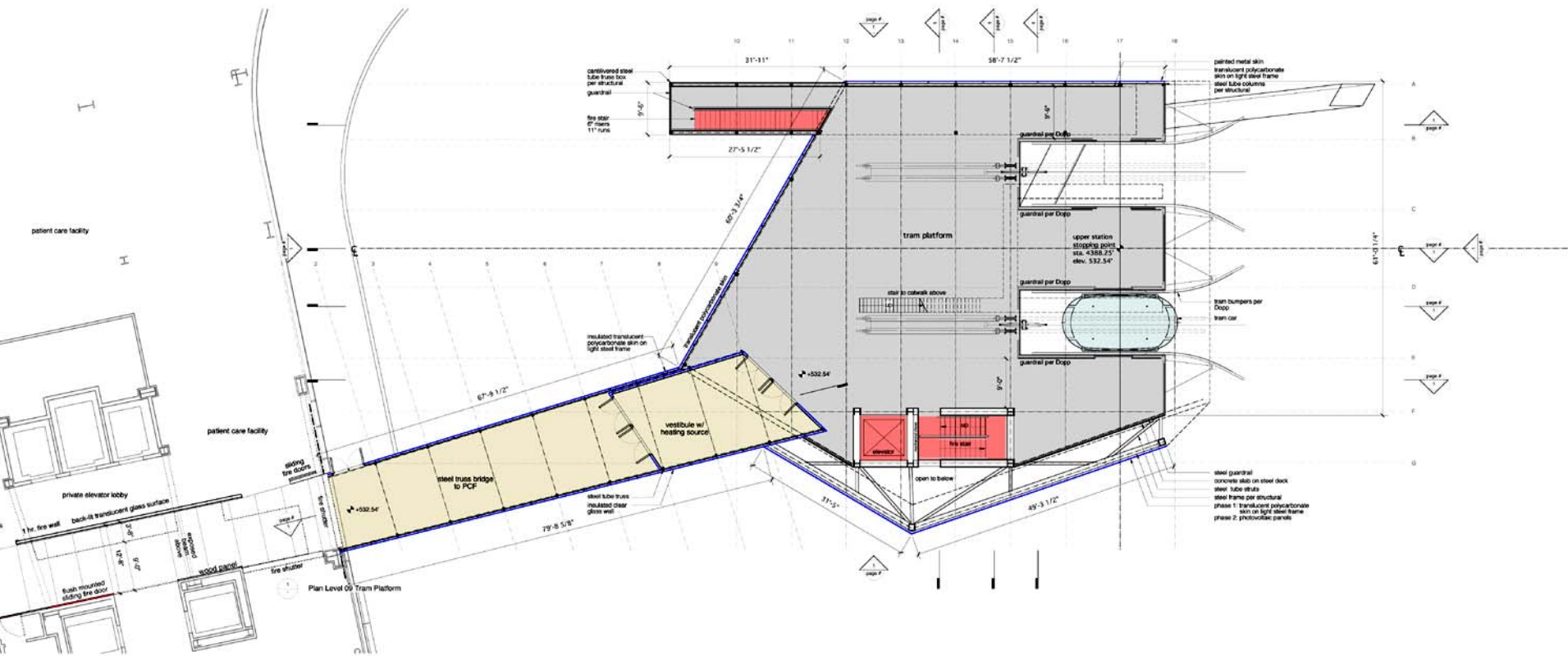




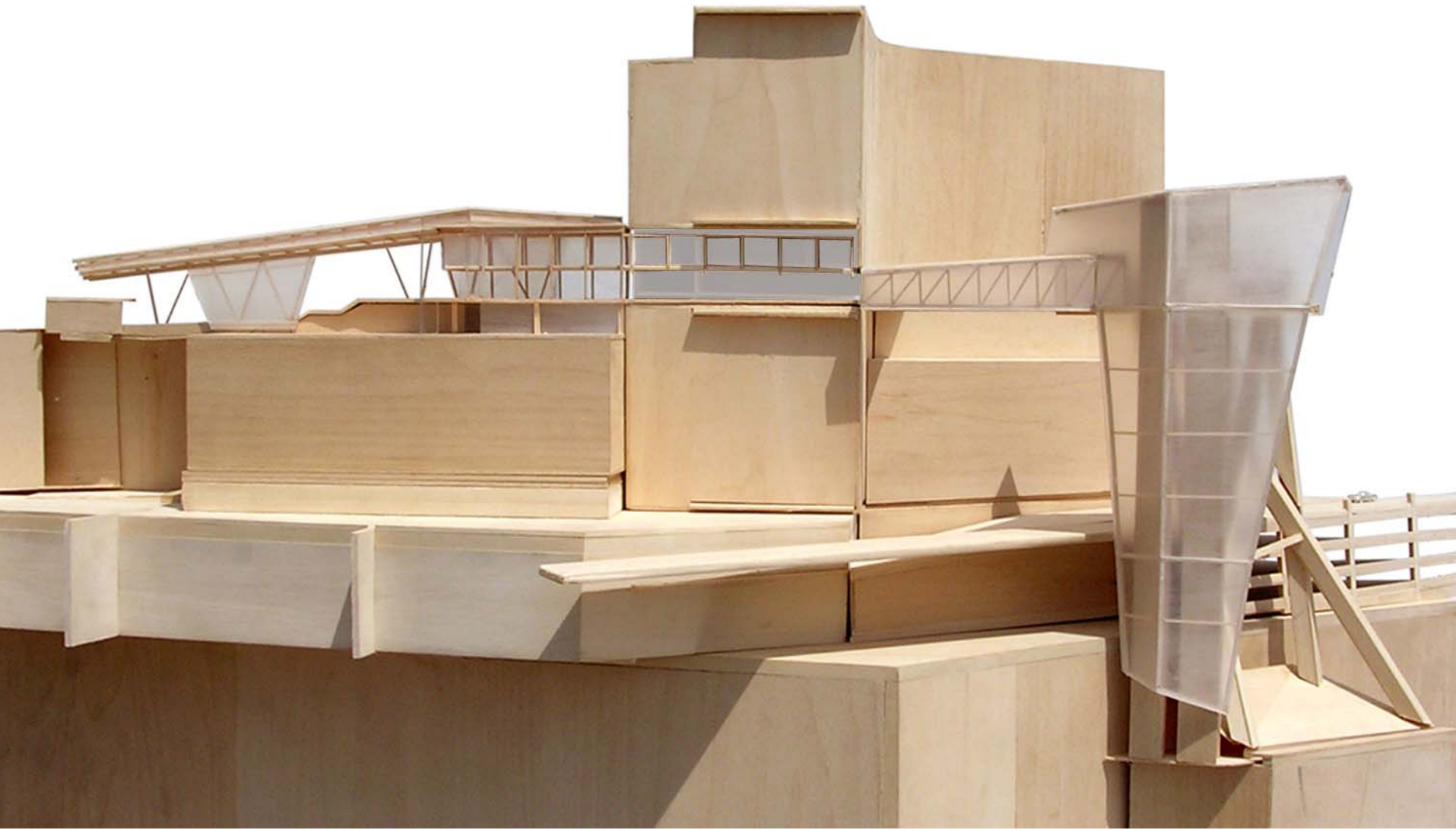
conceptual siteplan



site model



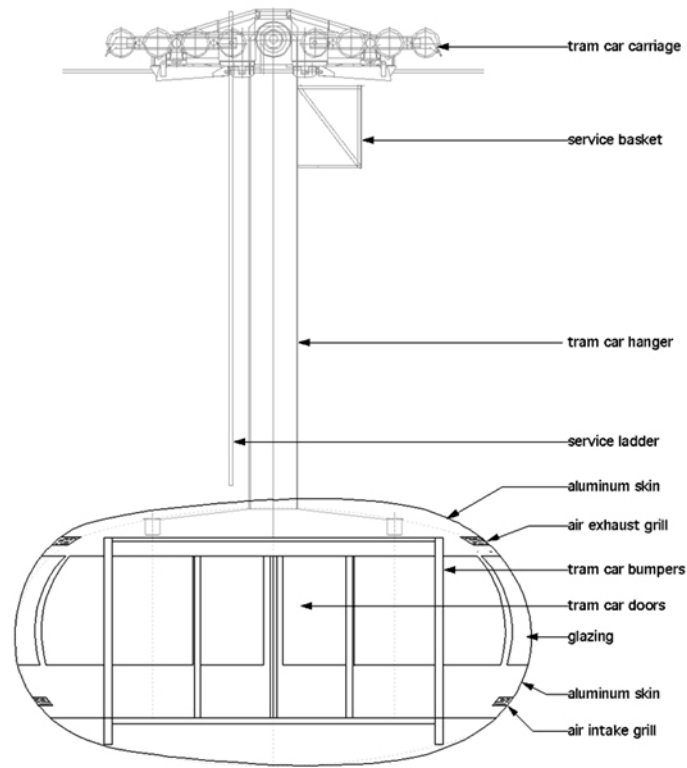
upper station plan: platform level



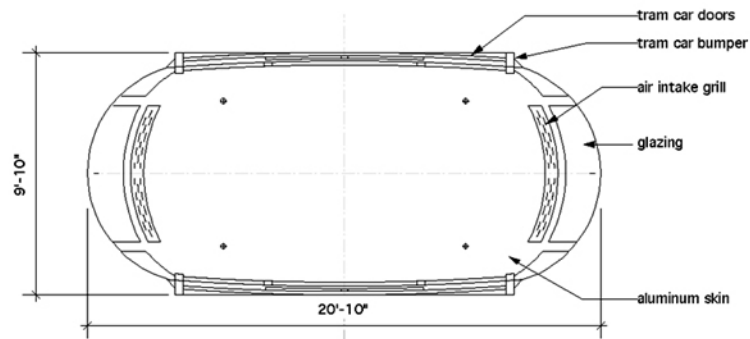
upper station section model looking north



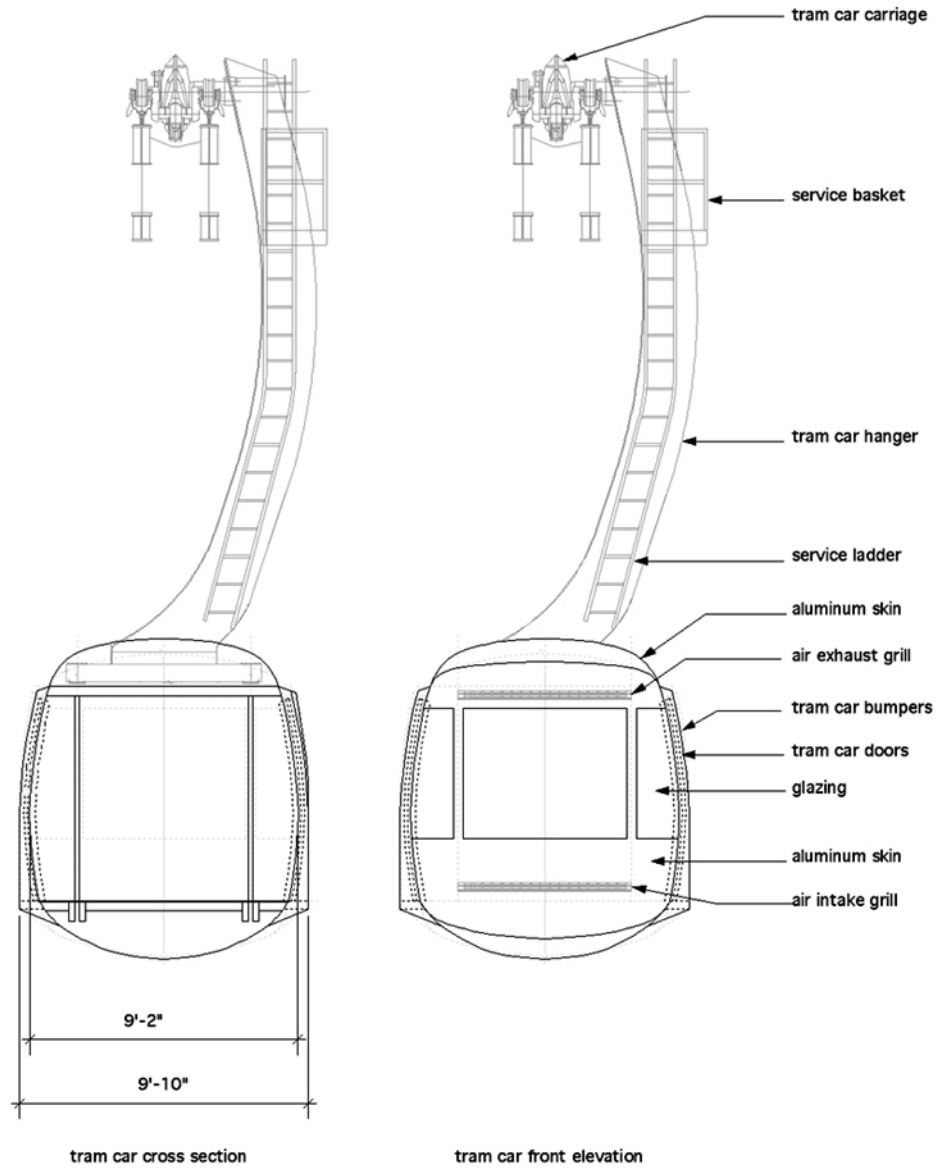
upper station: northeast elevation



tram car longitudinal elevation



tram car plan

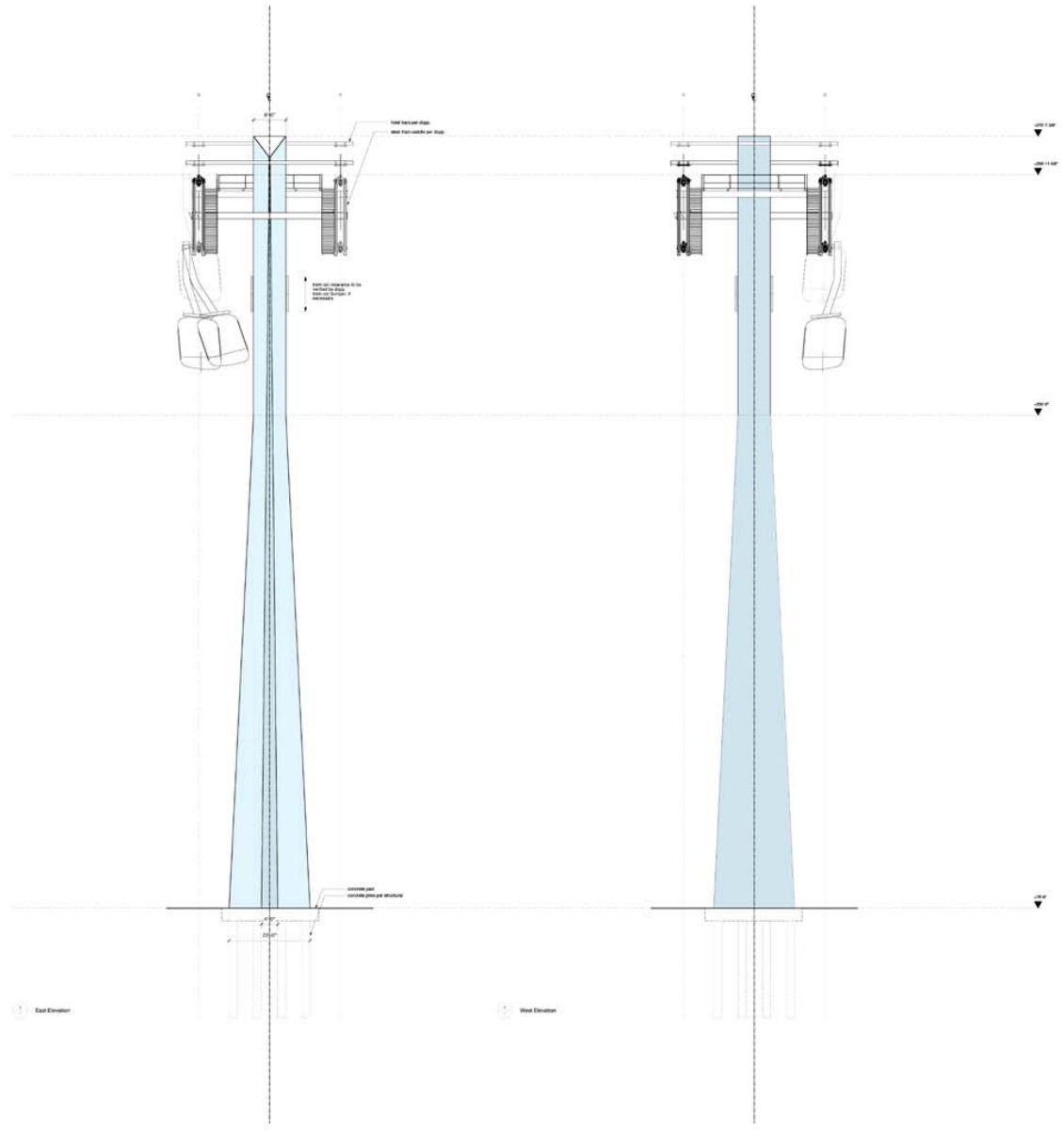


tram car: front elevation & section

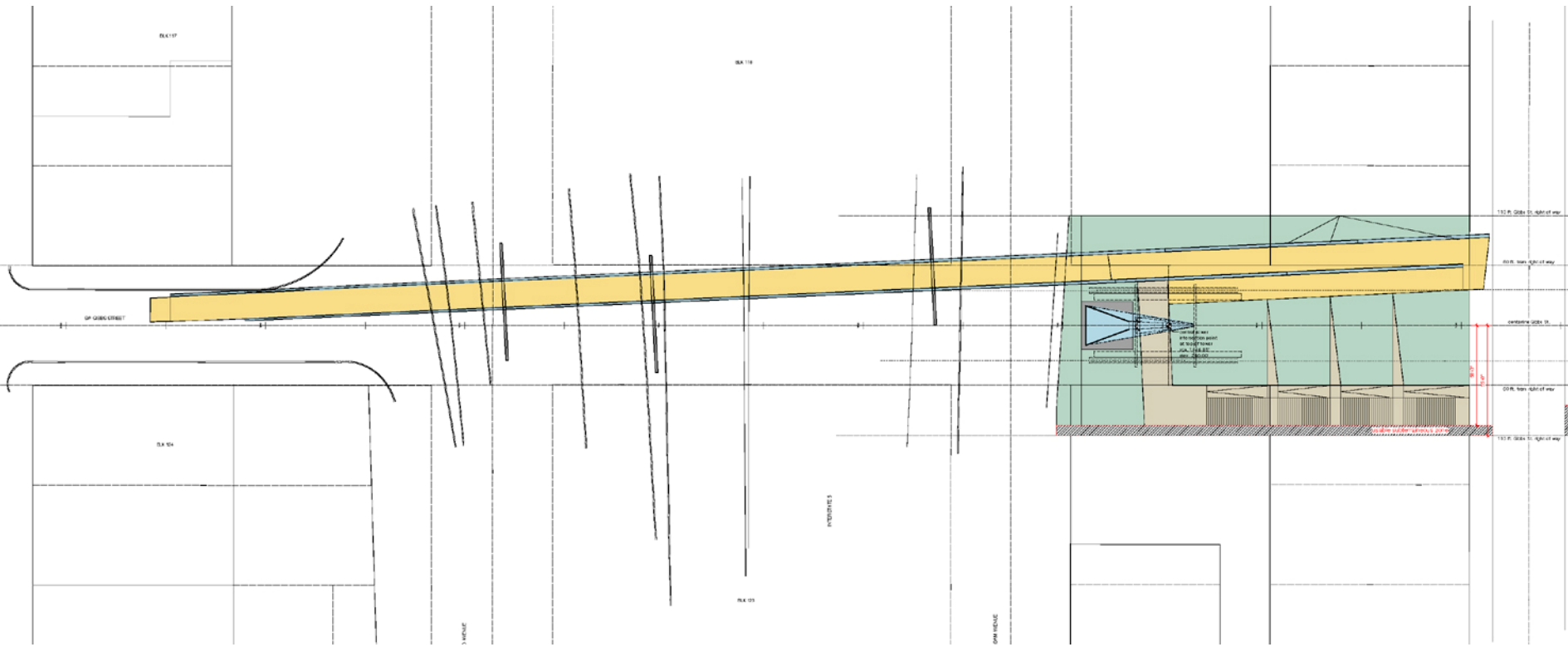




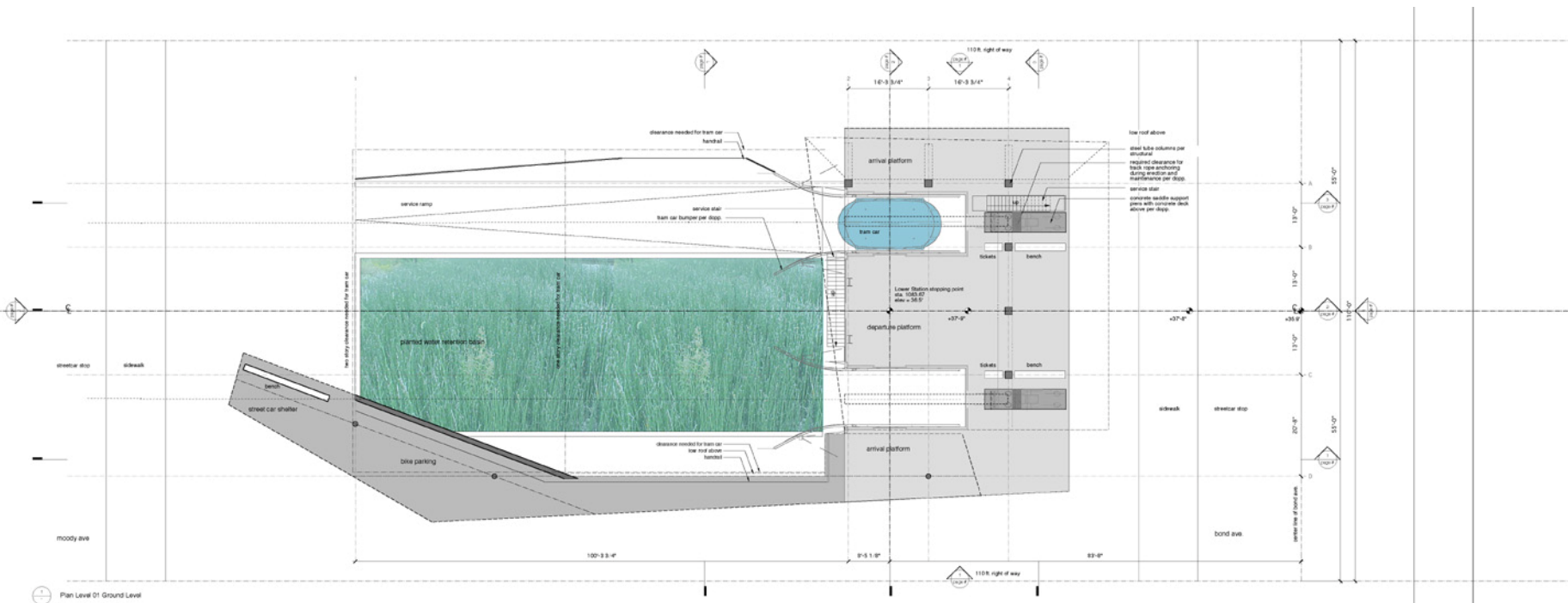
collage view looking east



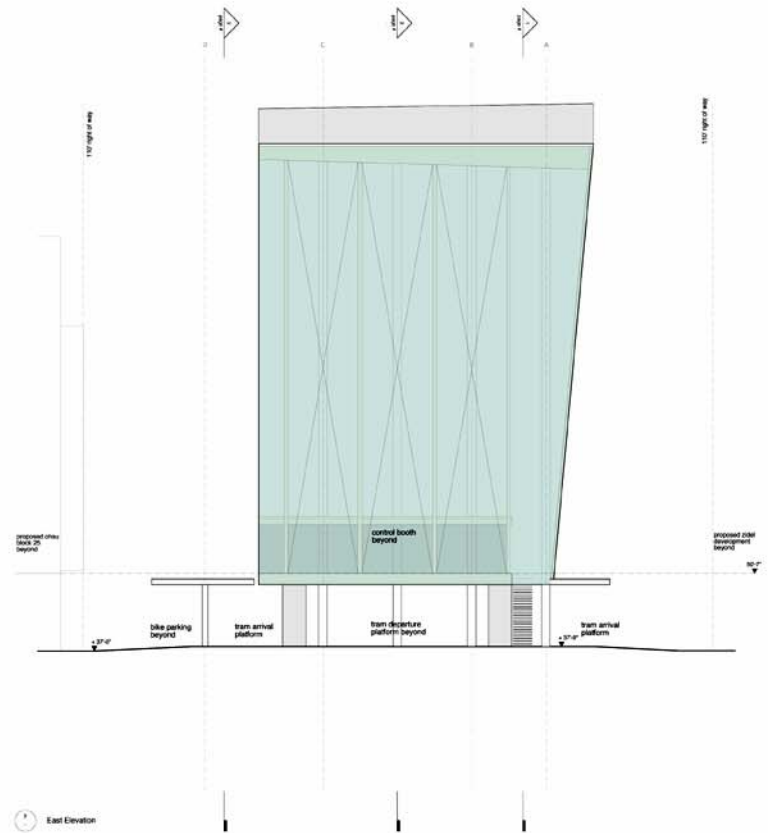
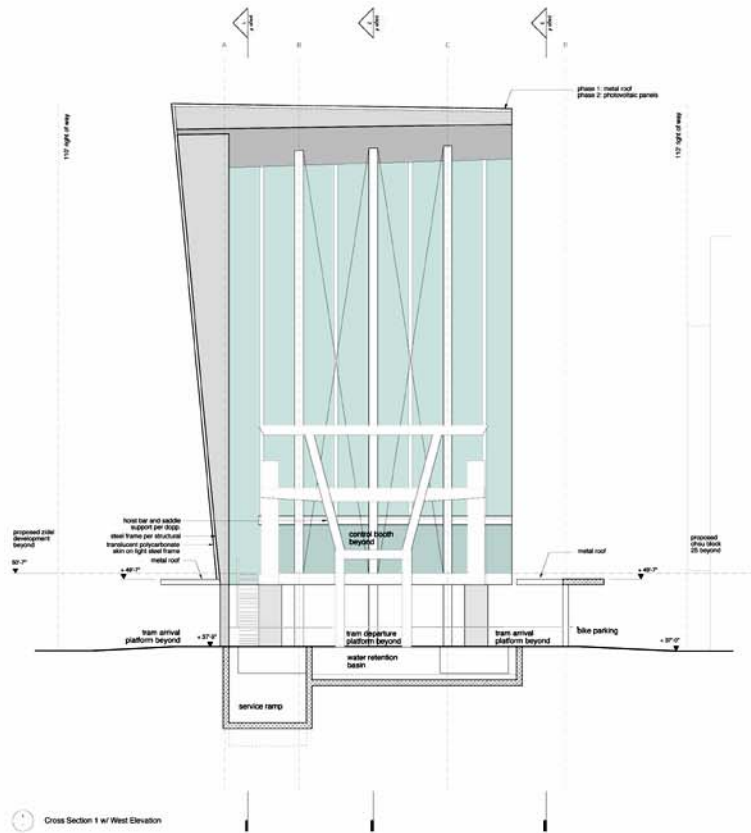
tram tower: east & west elevation



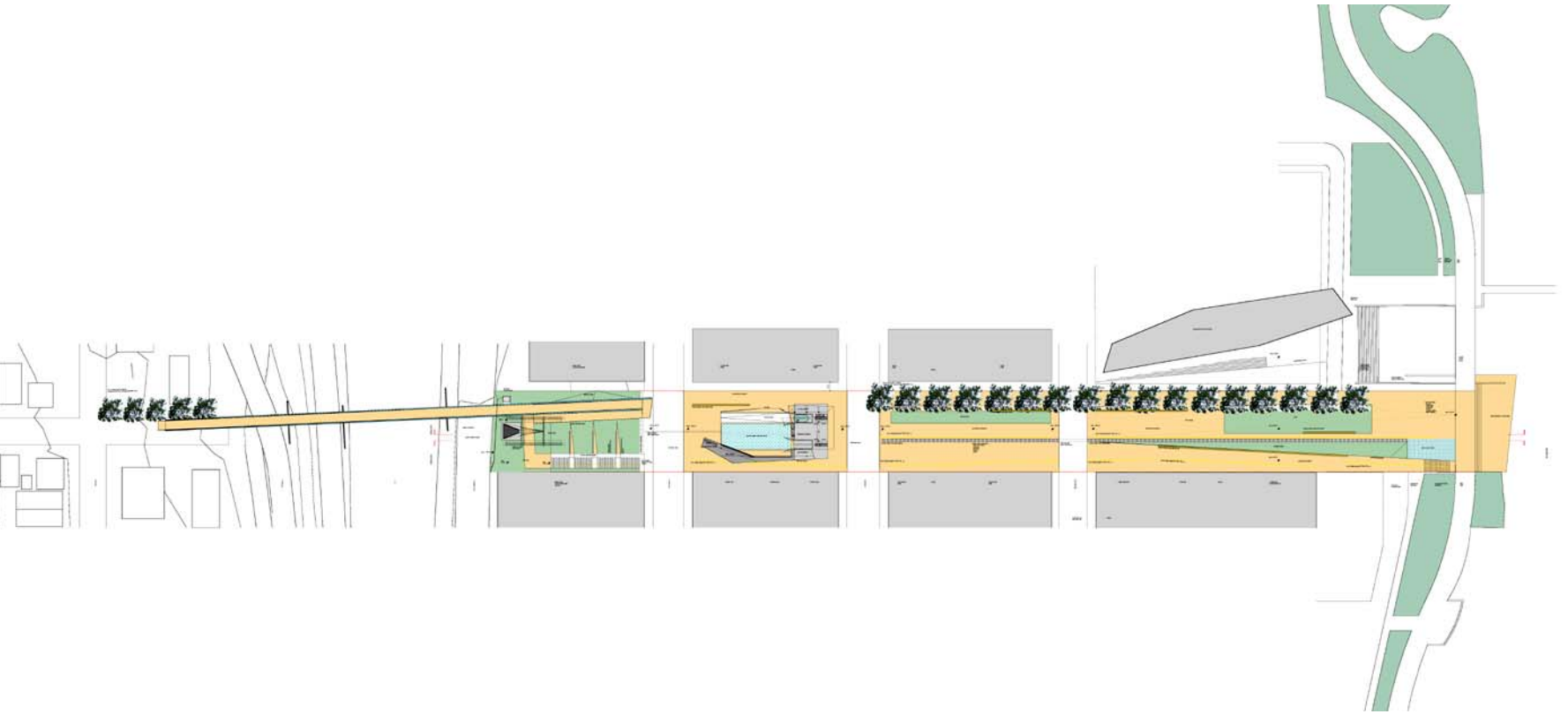
Pedestrian bridge: plan



lower station plan: ground level



lower station: west & east elevations



public street: gibbs street right of way studies
phase 3 diagram