

Portland Aerial Tram

City Council Presentation
June 10, 2004



Schematic Design Process

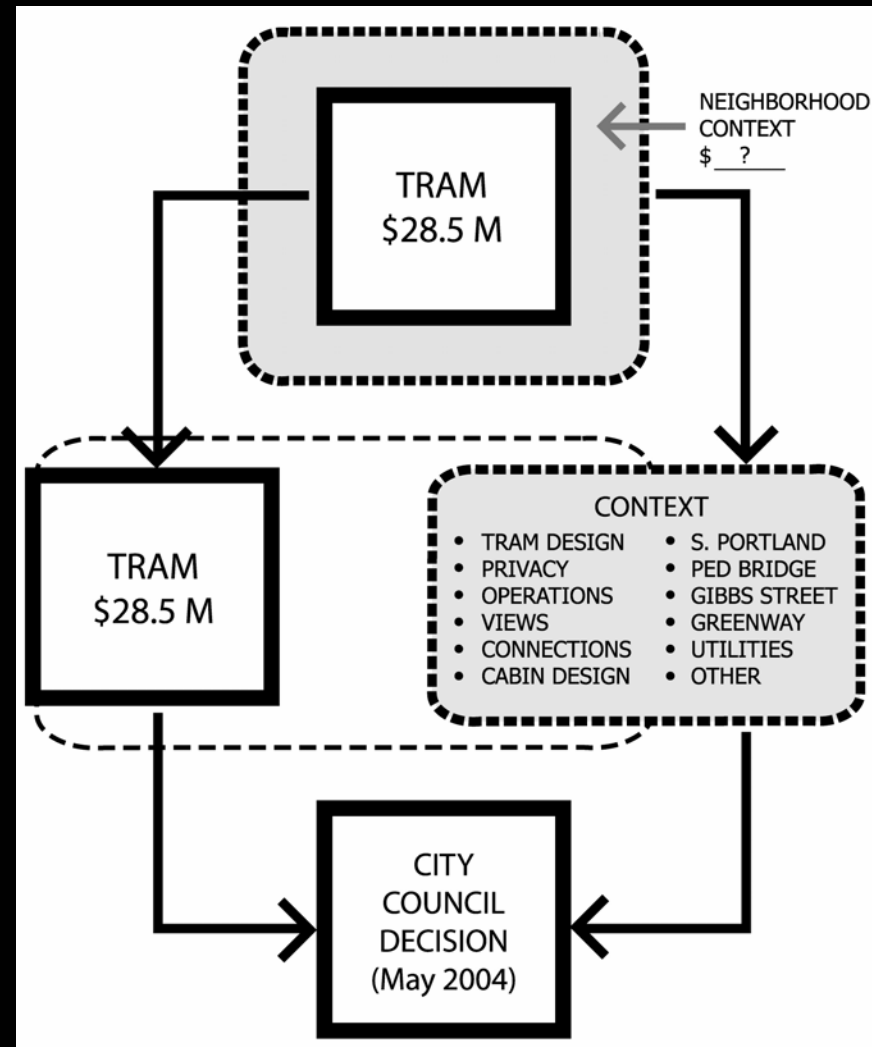
Tram Vision



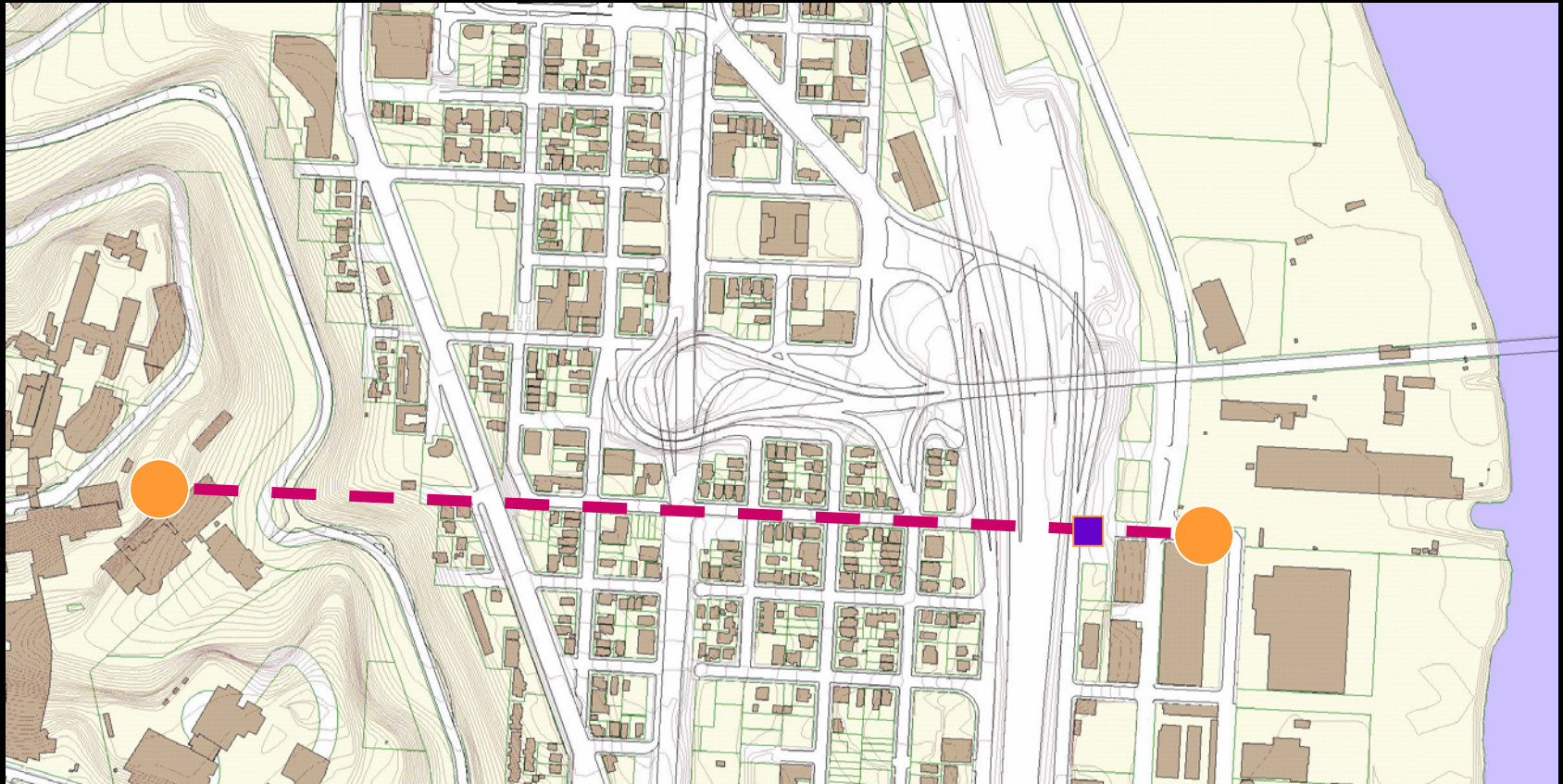
The creation of connections, linking communities through transportation infrastructure, public space, landscape and sustainable design.

Schematic Design Process

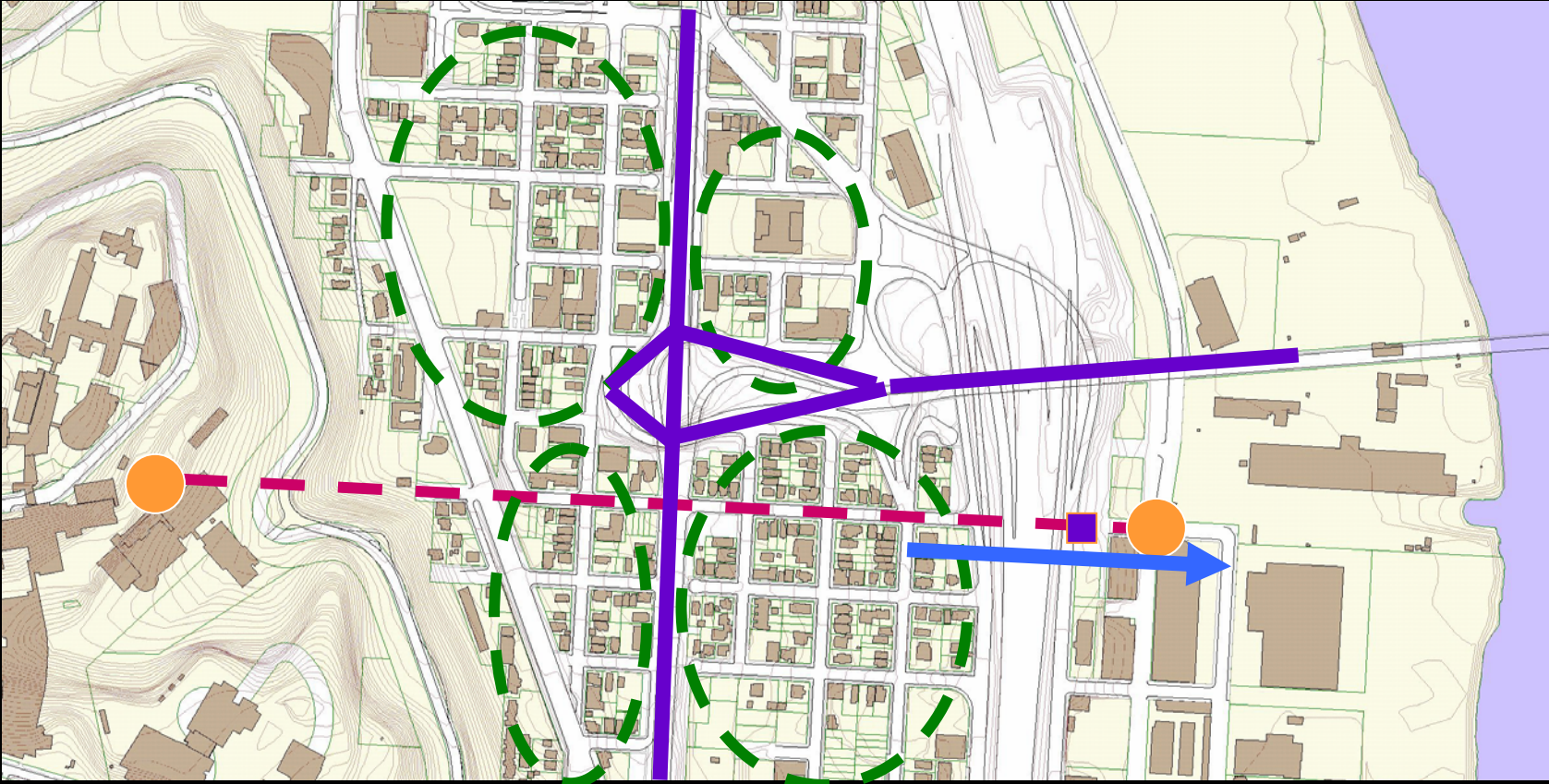
- Explore Tram in context w/ community
- Define Tram Design
- Identify Neighborhood Improvements
- Final Recommendation to Council, including funding, prioritization



Tram “Mitigation”



Neighborhood Improvements



AERIAL TRAM CONCEPT MAP

Regional Recommendations

Marquam Hill Area

Lair Hill Area

Terwilliger Area

South Waterfront Area

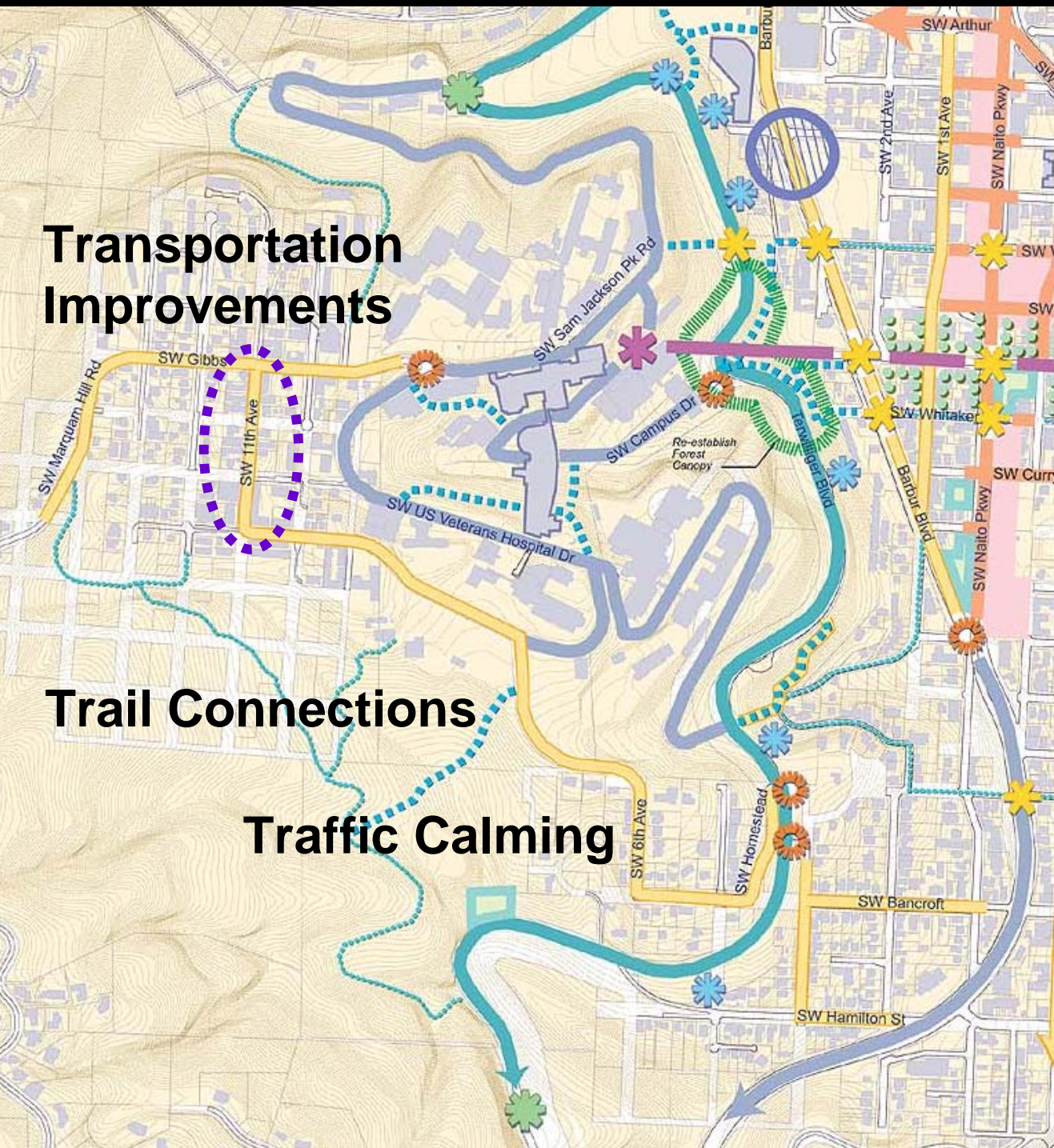
LEGEND	
	FREEWAY
	TERWILLIGER PARKWAY
	TERWILLIGER GATEWAY
	MAJOR VIEWPOINTS
	AERIAL TRAM
	TRAM STATION
	REGIONAL IMPROVEMENTS
	REGIONAL IMPROVEMENT NODE
	RAIL IMPROVEMENTS
	TRAFFIC CALMING IMPROVEMENTS
	INTERSECTION IMPROVEMENTS
	CROSSING IMPROVEMENTS
	TRAIL CONNECTIONS
	NEIGHBORHOOD PARK IMPROVEMENTS
	SPECIAL ENHANCEMENT AREA
	SOUTH PORTLAND STUDY AREA
	DEVELOPMENT OPPORTUNITIES

Transportation Improvements

Trail Connections

Traffic Calming

Marquam Hill Area





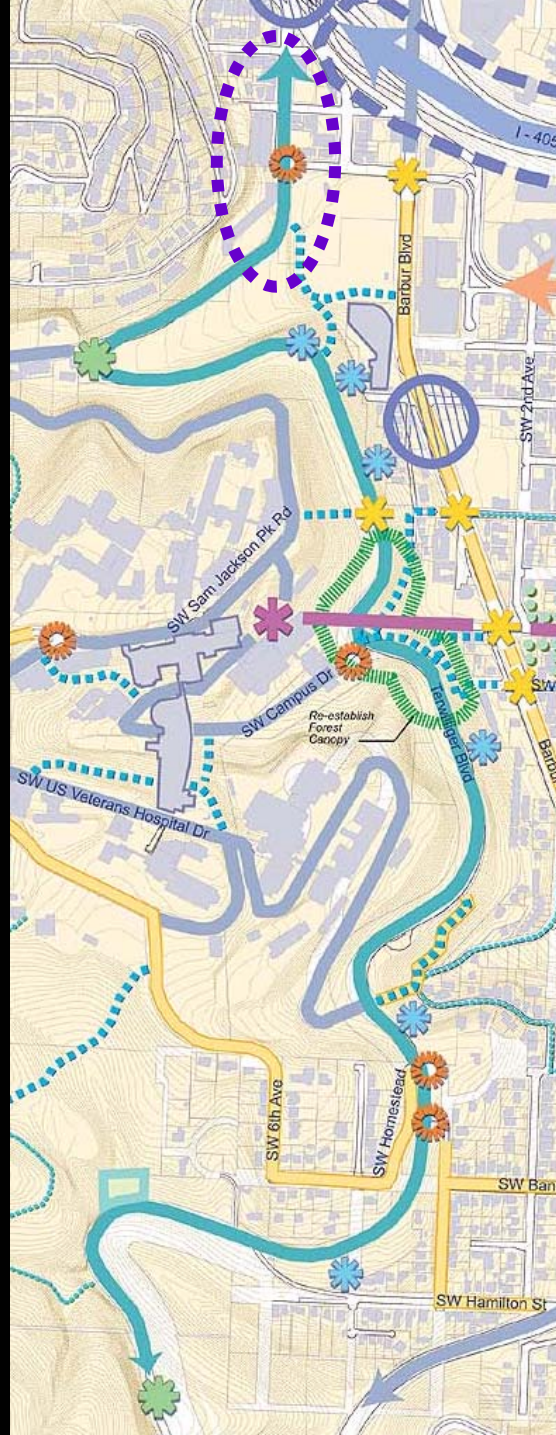


**Traffic Calming and
Transportation
Improvements**

Trail Connections

**Viewpoint
Enhancements**

**Gateway
Improvements**



**Terwilliger
Parkway
Area**

Terwilliger Parkway Area





SPEED
30

RIGHT LANE
MUST
TURN RIGHT

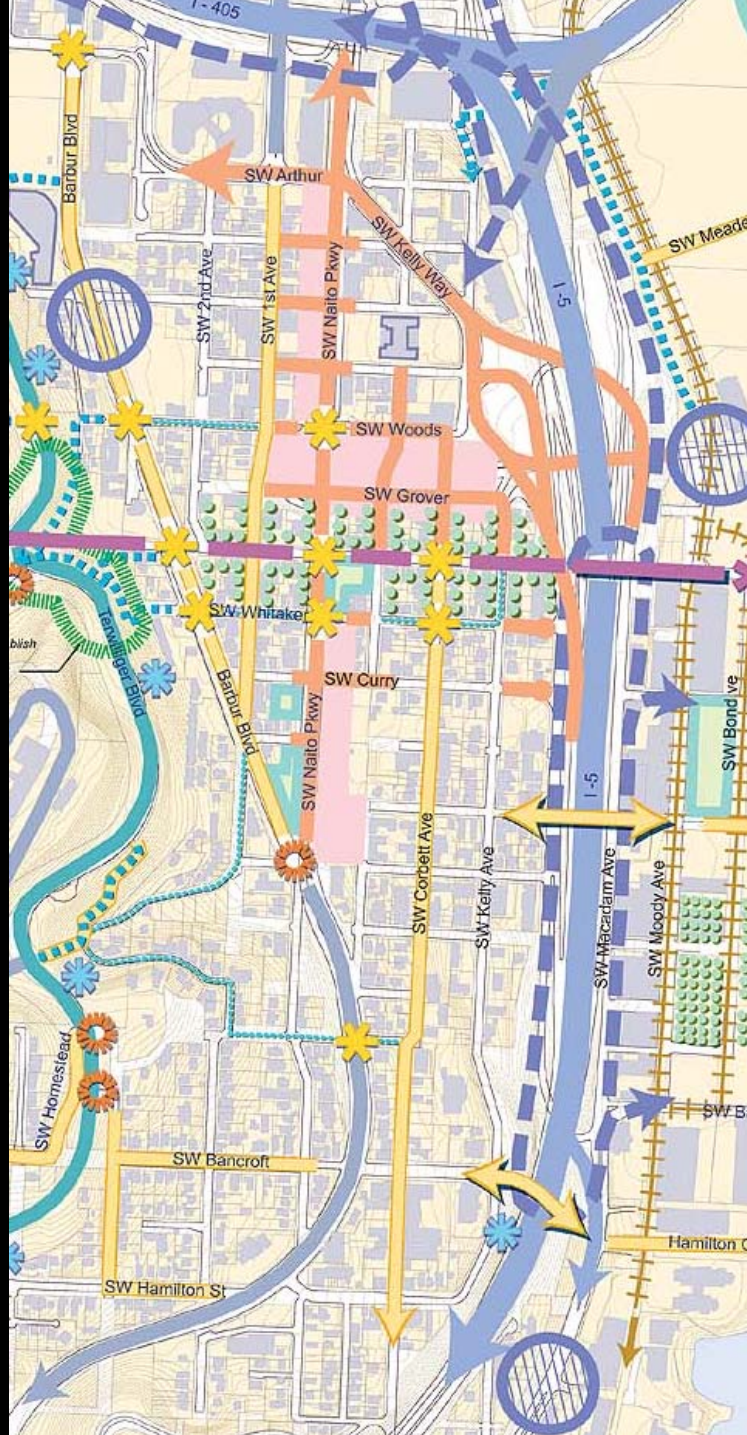


South Portland Circulation Study

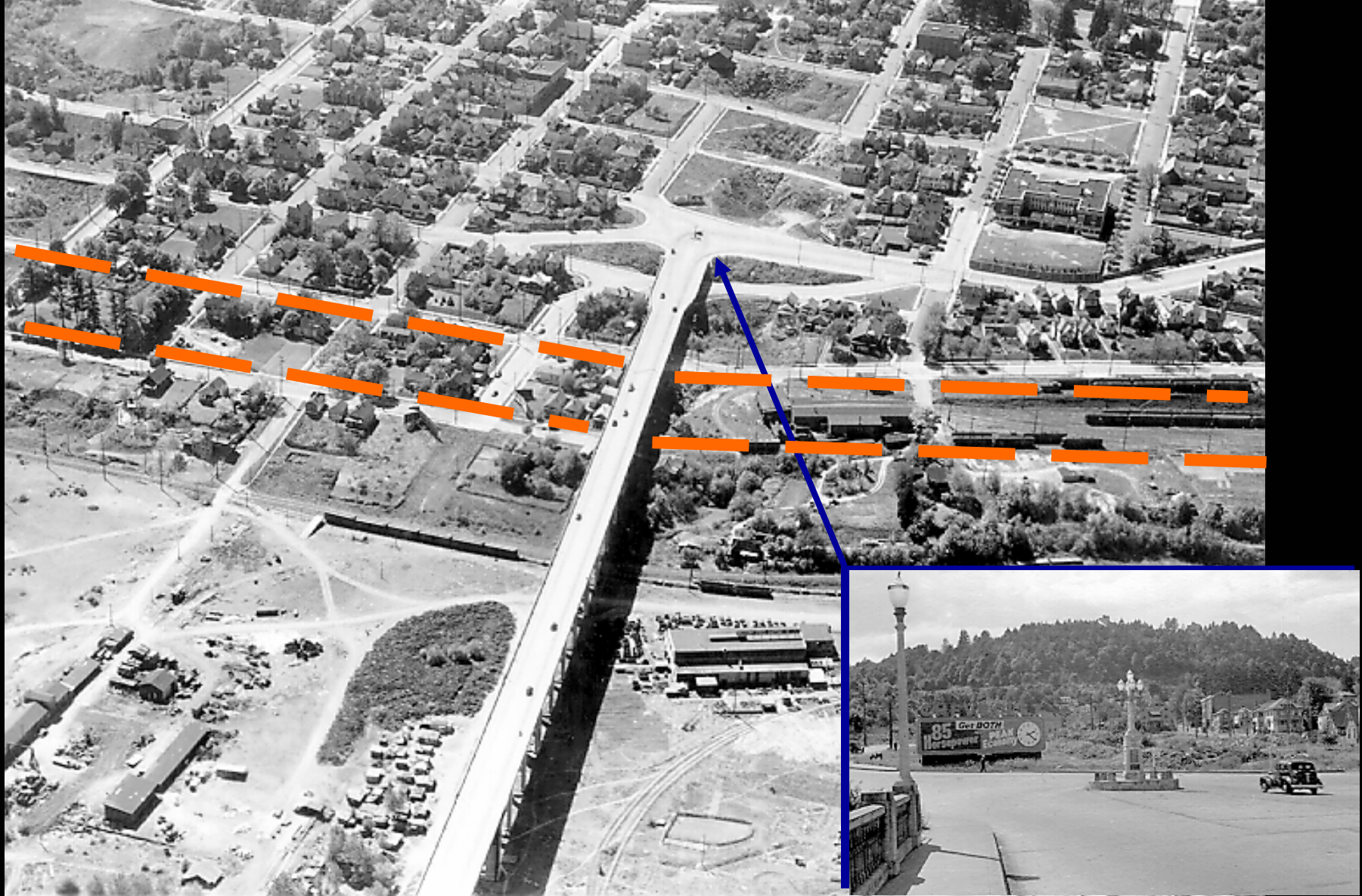
Gibbs Street
Improvements

Pedestrian
Connections

Traffic Calming
and Mitigation

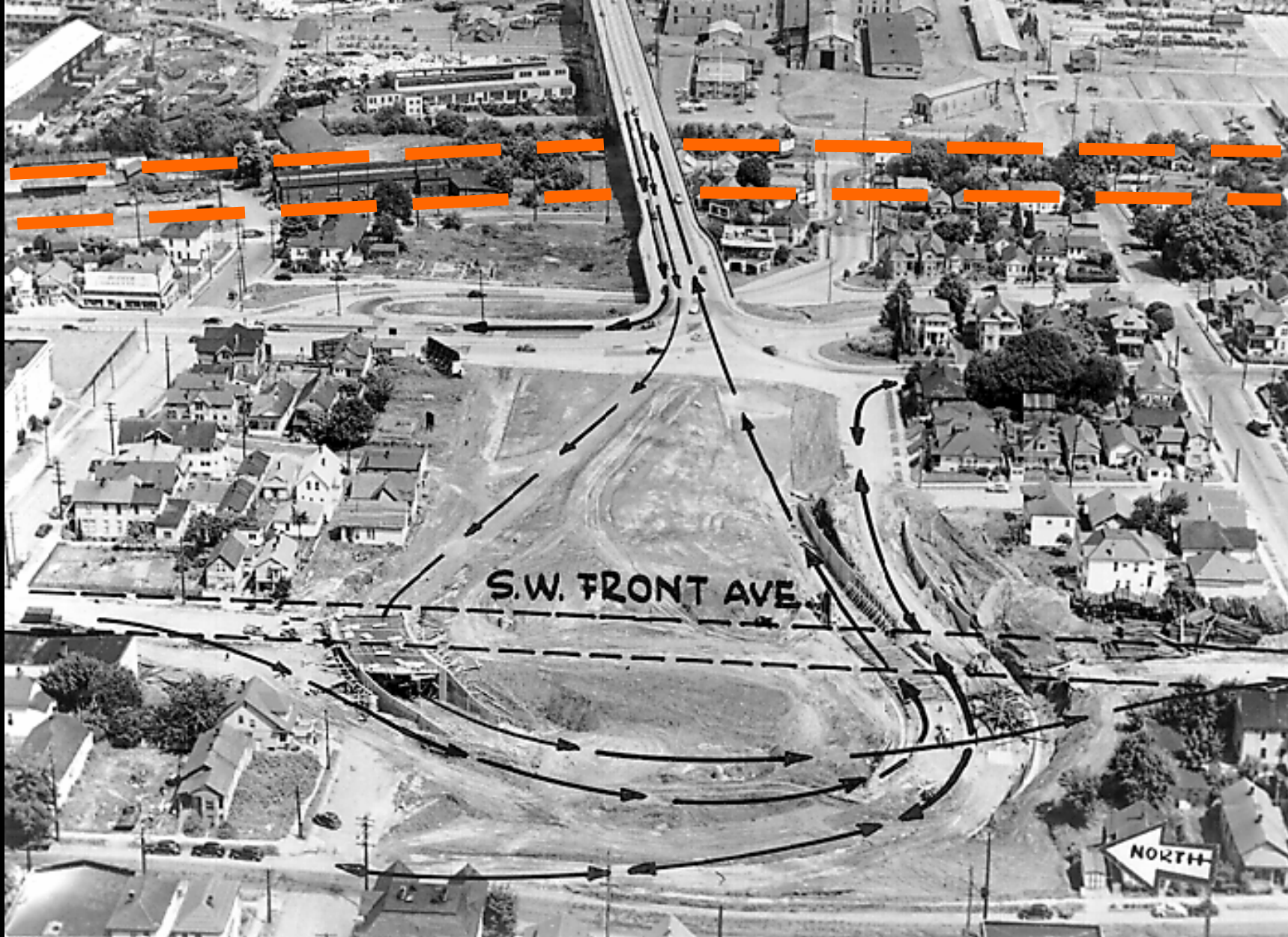


Lair
Hill
Area



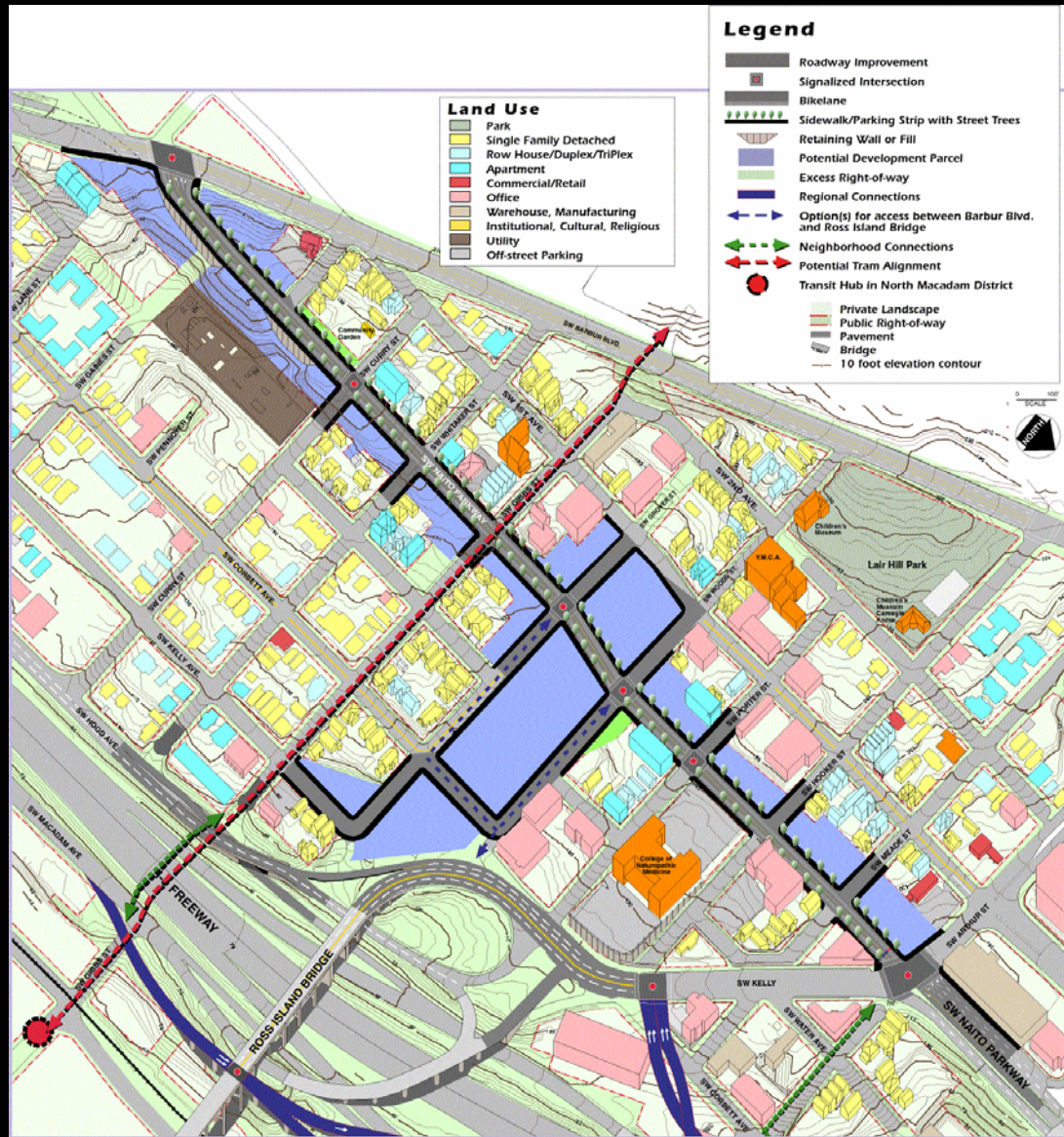
West end of the Ross Island Bridge, early 1930's.

Oregon Historical Society

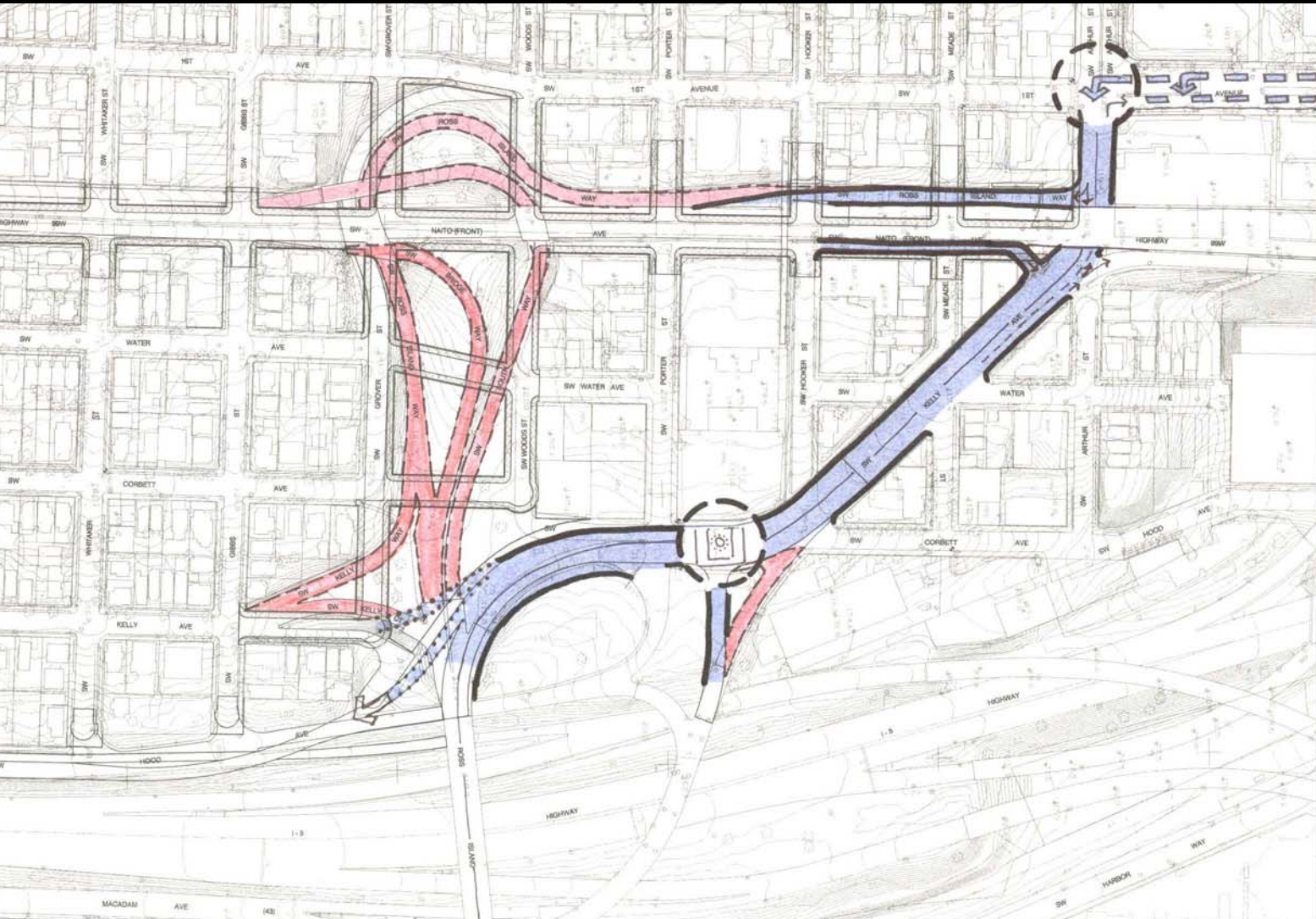


Ross Island Bridge ramps under construction, 1947.

South Portland Circulation Study



South Portland Circulation Study



SOUTH PORTLAND CIRCULATION STUDY

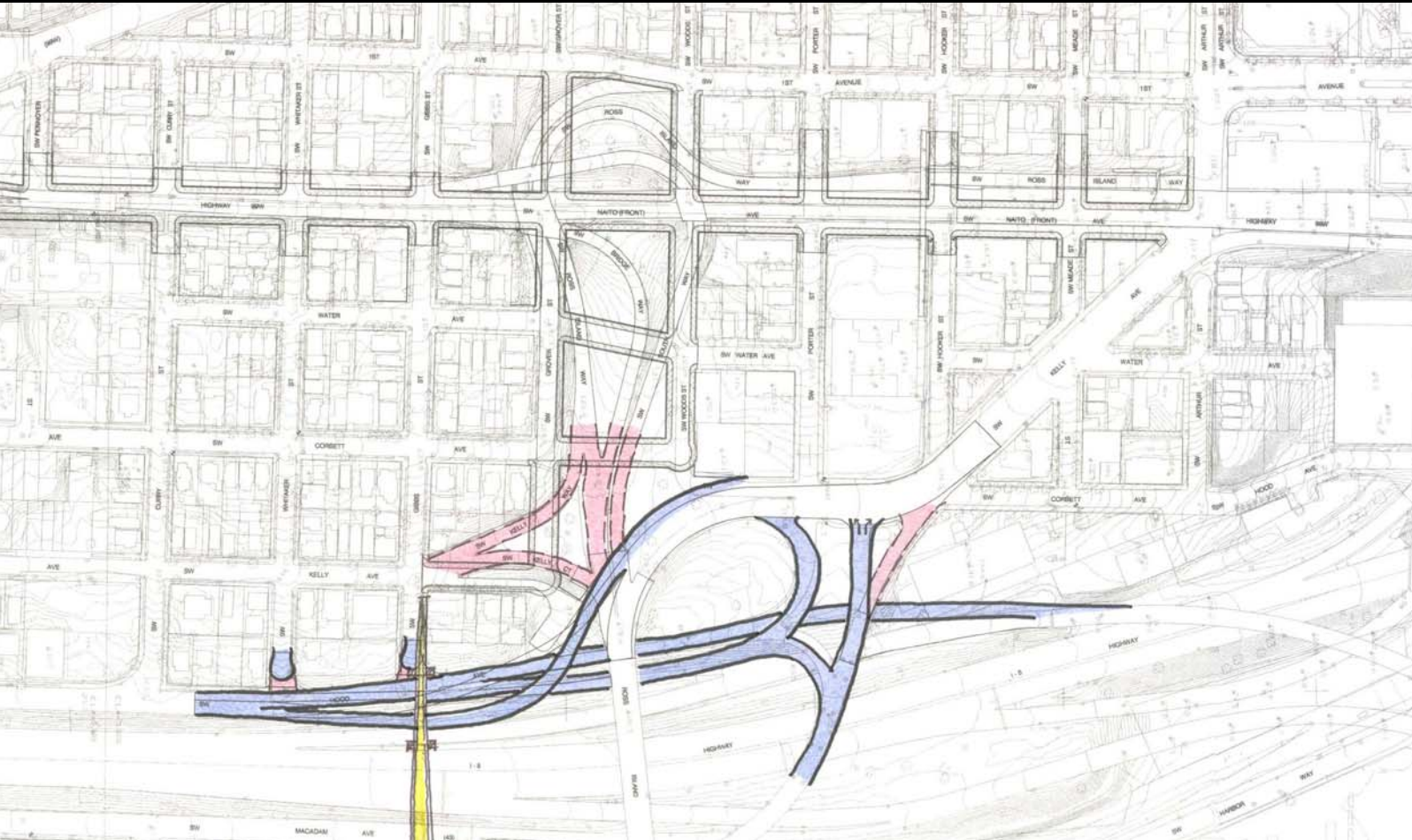
PRELIMINARY PLAN - BASE MAP
S.W. NAITO PARKWAY

LOCATED IN THE
W 1/2 OF SECTION 10, T1S, R1E W.M.

CITY OF PORTLAND
MULTNOMAH COUNTY, OREGON
June 2003



South Portland Circulation Study



SOUTH PORTLAND CIRCULATION STUDY

PRELIMINARY PLAN - BASE MAP
S.W. NAITO PARKWAY

LOCATED IN THE
W 1/2 OF SECTION 10, T15, R1E, W.M.

CITY OF PORTLAND
MULTNOMAH COUNTY, OREGON
June 2003

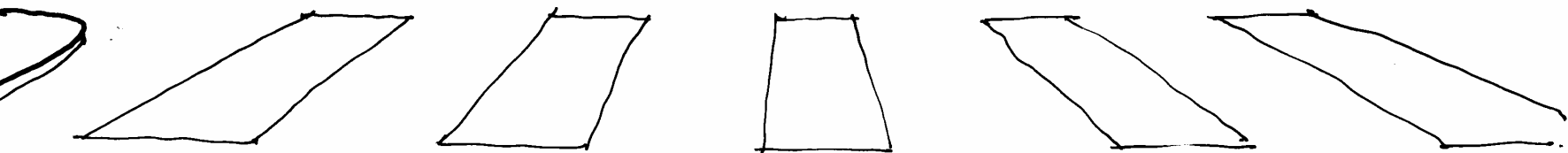
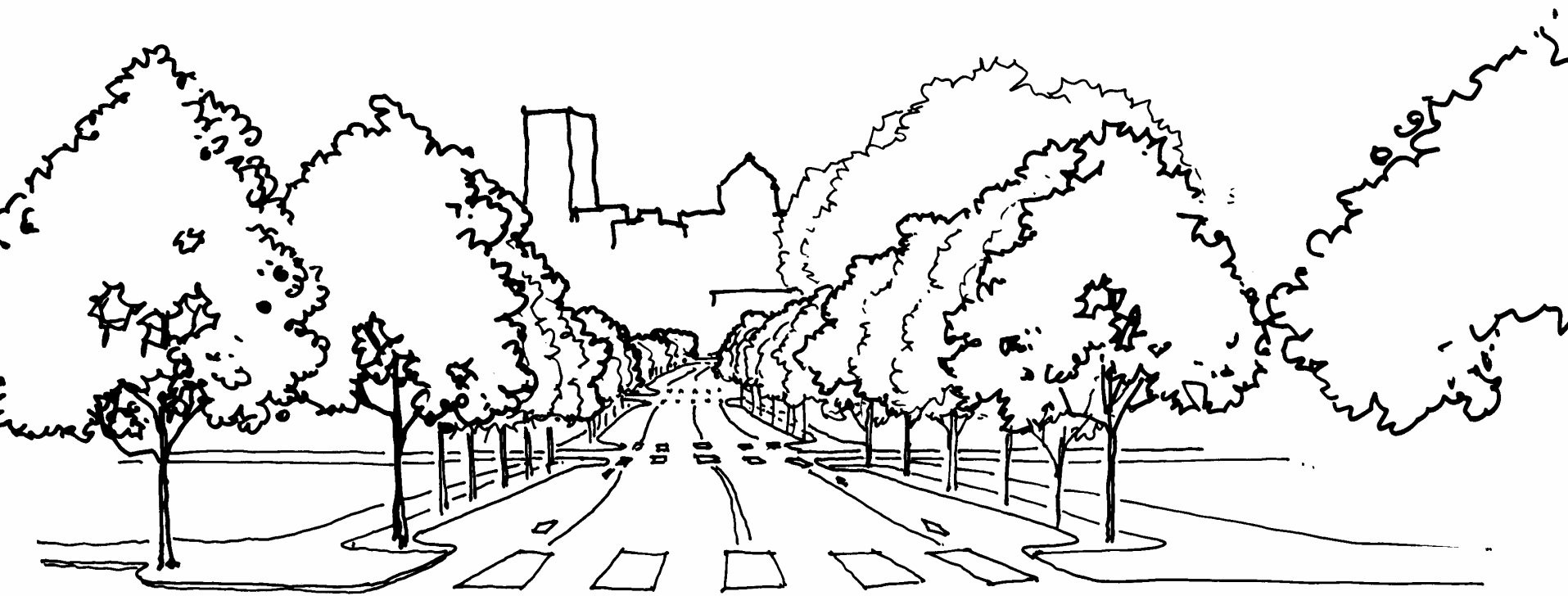


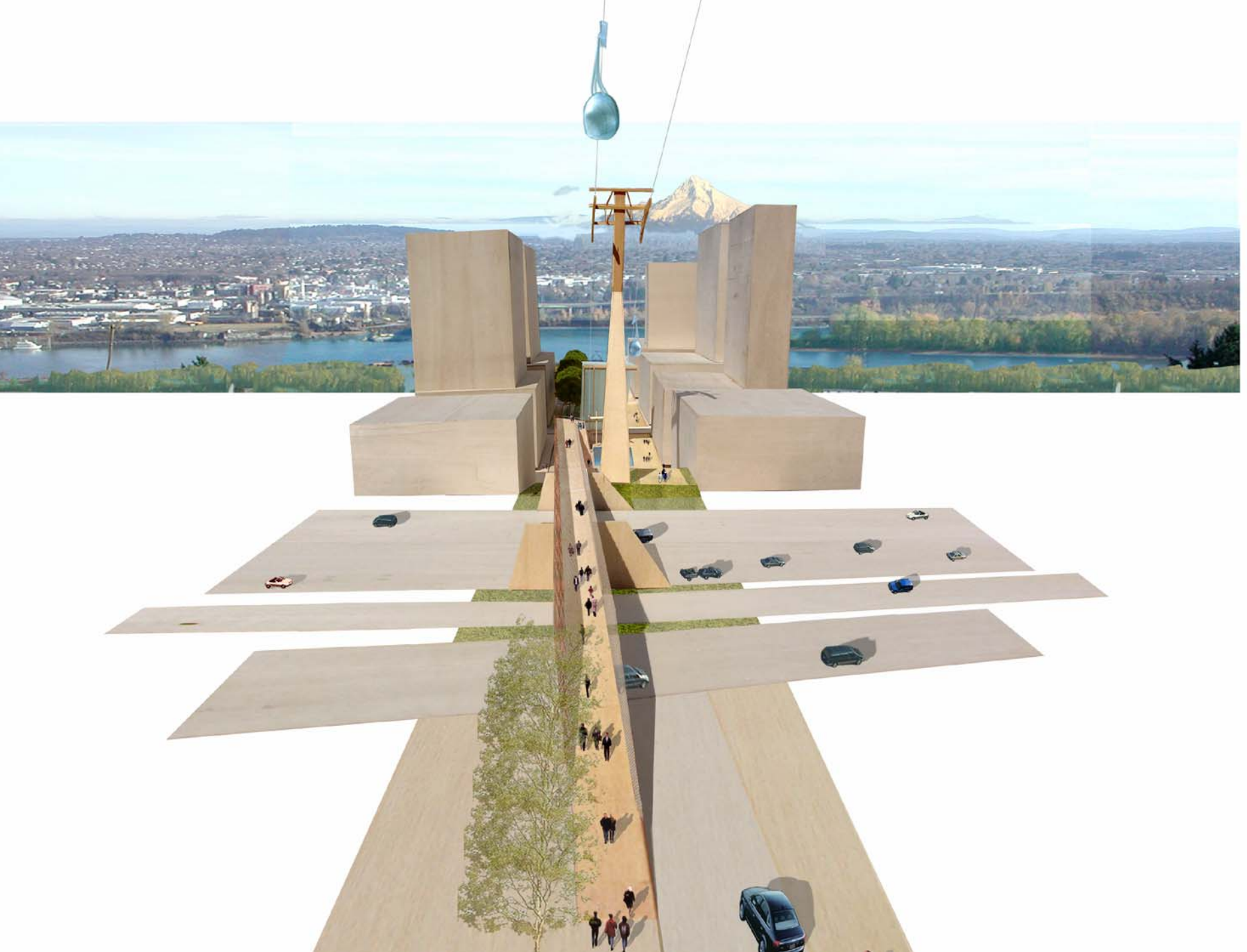


26 EAST
Ross Island B
EXIT ONLY

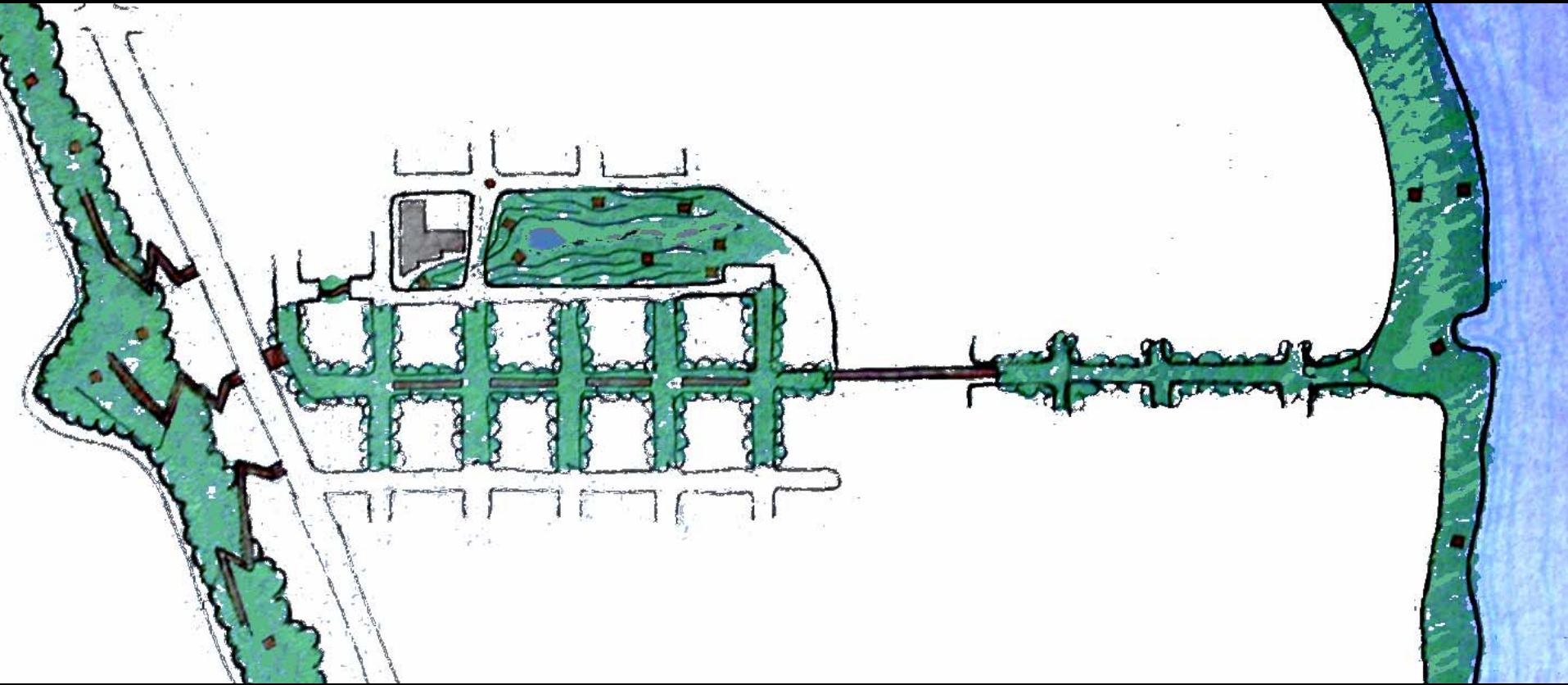
EXIT
25





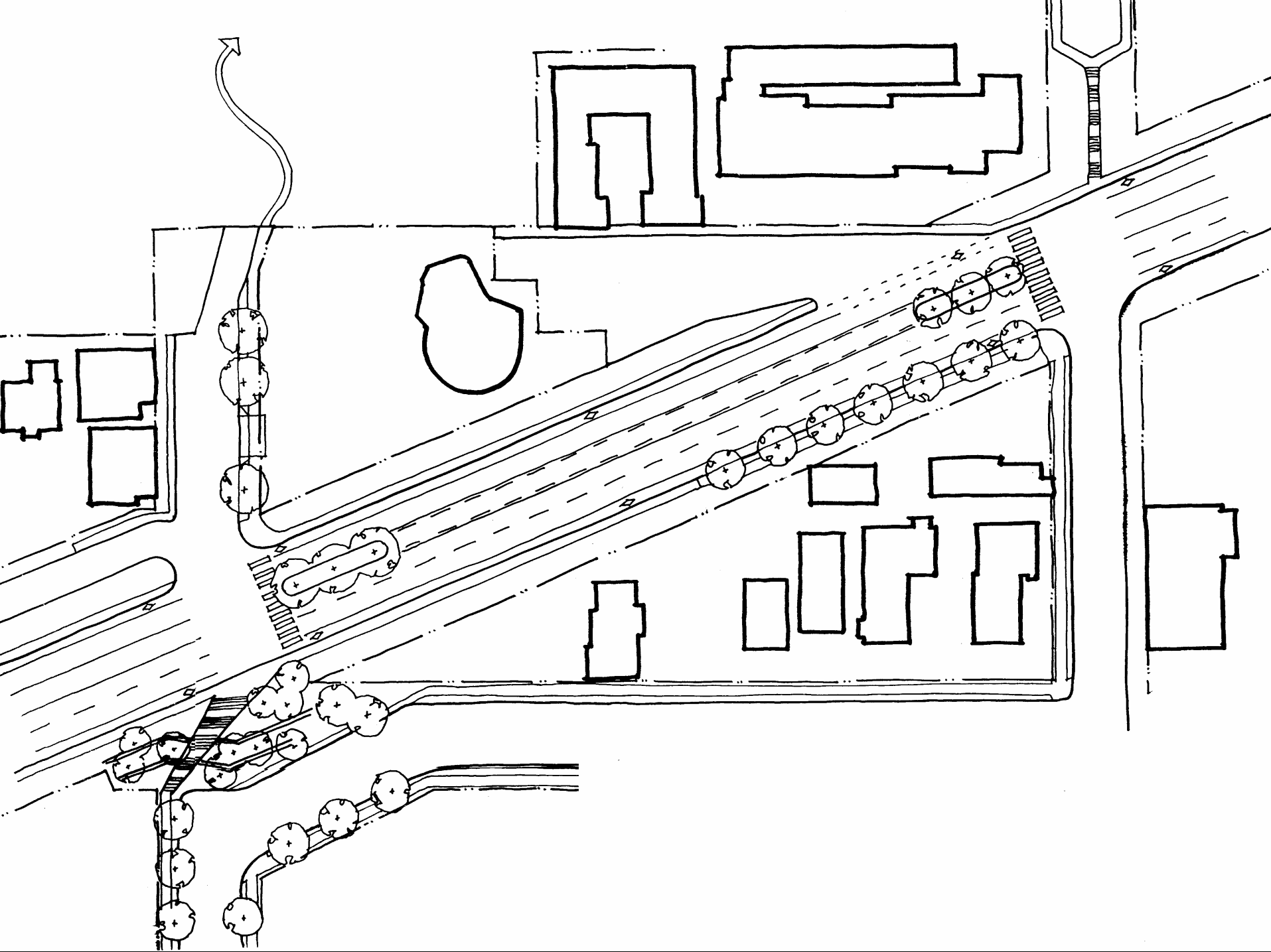








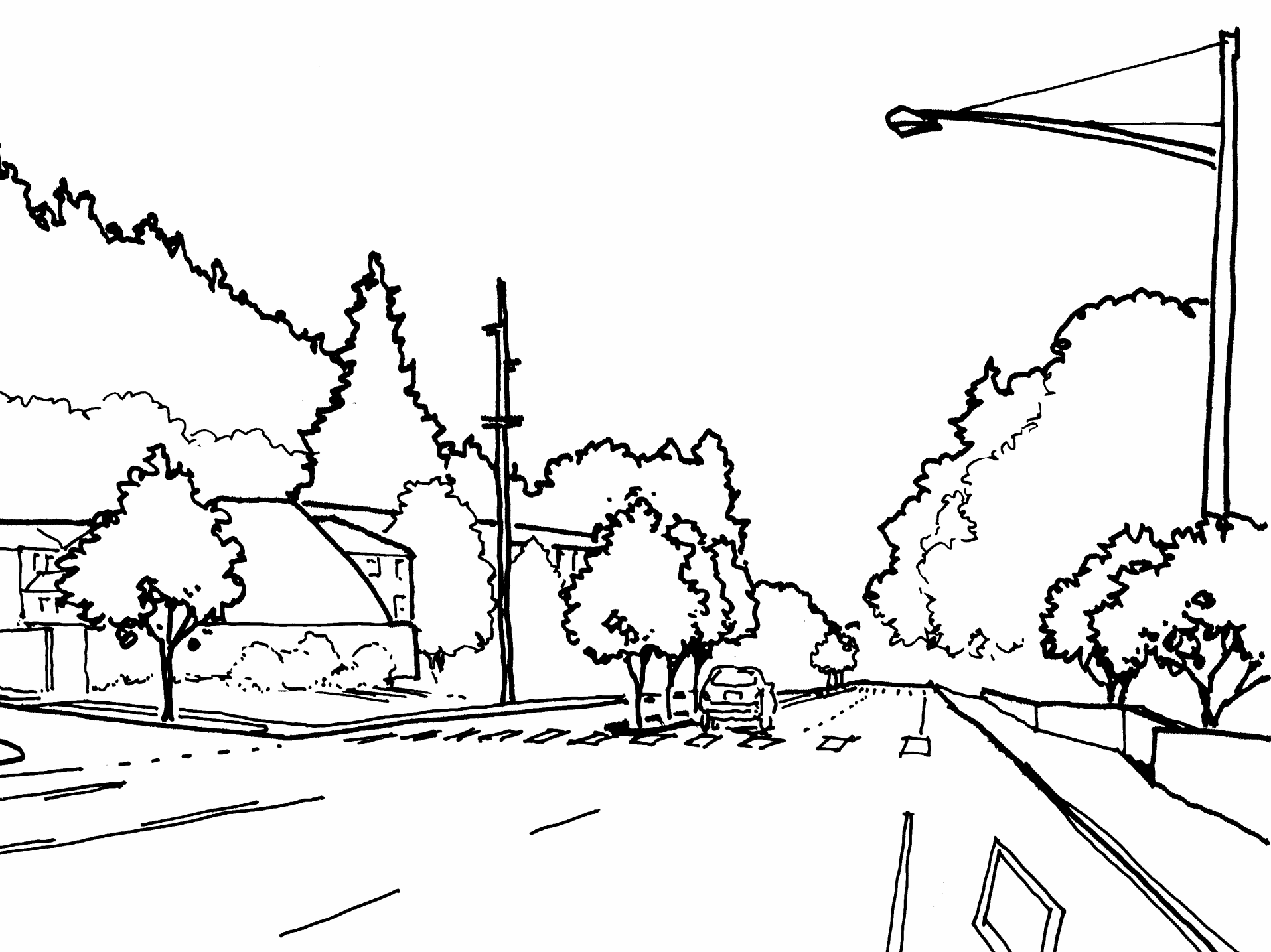






SPEED
35

FOR RENT



Transit Improvements - Streetcar, Bus, Light Rail

Neighborhood Parks

Greenway Master Plan and Improvements

Transportation Access

South Waterfront



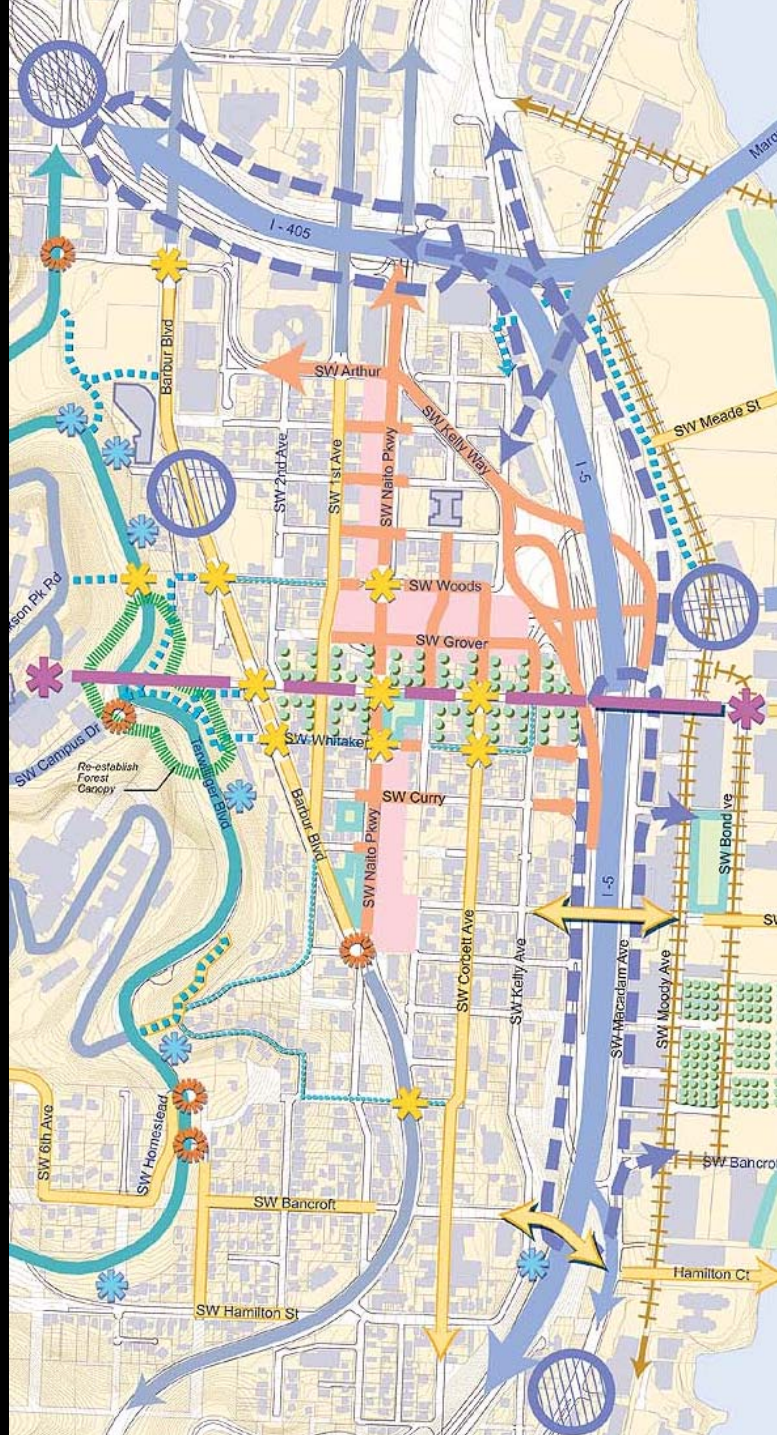
**6th Avenue/I-405
On-ramp**

I-405 Loop Study

**Connections to
Regional Transit**

**Regional Road
Connections**

**Macadam Avenue
Access
Improvements**



**Regional
Issues**

Neighborhood Improvements

Current Year Projects

- 6th/Sheridan (OHSU/PDOT) \$850K
- Lakeman/Orkney Property (Parks) \$3.2M
- Virginia Ave. Traffic Calming (BES) \$100K
- CTLH Traffic Calming (PDOT) \$150K
- Neighborhood Improvements (PDC) \$2M
- Macadam Ave Improvements (ODOT) \$2M
- Neighborhood Park (PDC/Parks) \$6M
- Marquam Hill Trails (OHSU) \$10K
- Gibbs/Terwilliger Street Trees (PATI) \$75K
- **Total Project Commitments: \$14.5M**

Neighborhood Improvements

Work Plan, 2004/2005

- Marquam Hill Traffic Calming Study (OHSU)
- Pedestrian Bridge Funding (PDOT/PDC)
- Terwilliger Parkway Plan Update (Parks/BOP)
- Marquam Hill Trail Connections
(PDOT/Parks/OHSU)
- OHSU Parkland Acquisition (OHSU/Parks)
- Barbur Blvd Sidewalk Improvements (PDOT)
- CTLH Traffic Calming Study (PDOT)
- Gibbs Street Improvement Study (PDOT/PATI)

Neighborhood Improvements

Work Plan, 2004 - 2010

- **Goal: Complete Tier One Projects**
 - Gibbs Street Pedestrian Bridge
 - South Portland Circulation Study
 - Marquam Hill Traffic Calming
 - Terwilliger Parkway Enhancements
 - Barbur Blvd Improvements
 - Gibbs Street Improvements

Neighborhood Improvements

Work Plan, 2004 - 2010

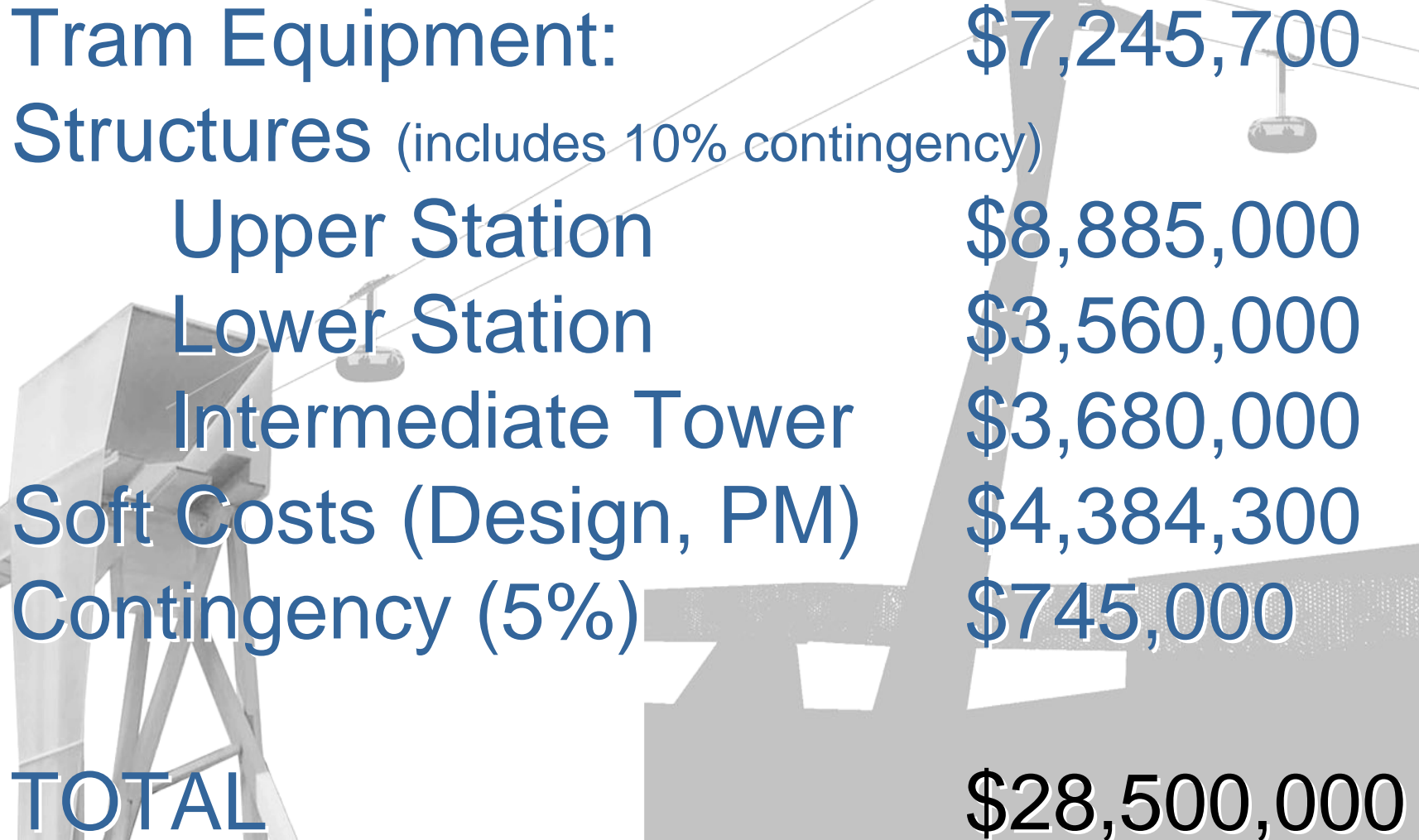
- Goal: Complete Tier One Projects
 - Gibbs Street Pedestrian Bridge
 - South Portland Circulation Study
 - ✓ Projects will require federal funding
 - ✓ Current Transportation bill: \$9M - \$15M
 - ✓ Need \$2.5M for Bridge
 - ✓ Need \$12 – 15M for South Portland
 - ✓ Keep projects as federal priorities for City

Property Owner Compensation



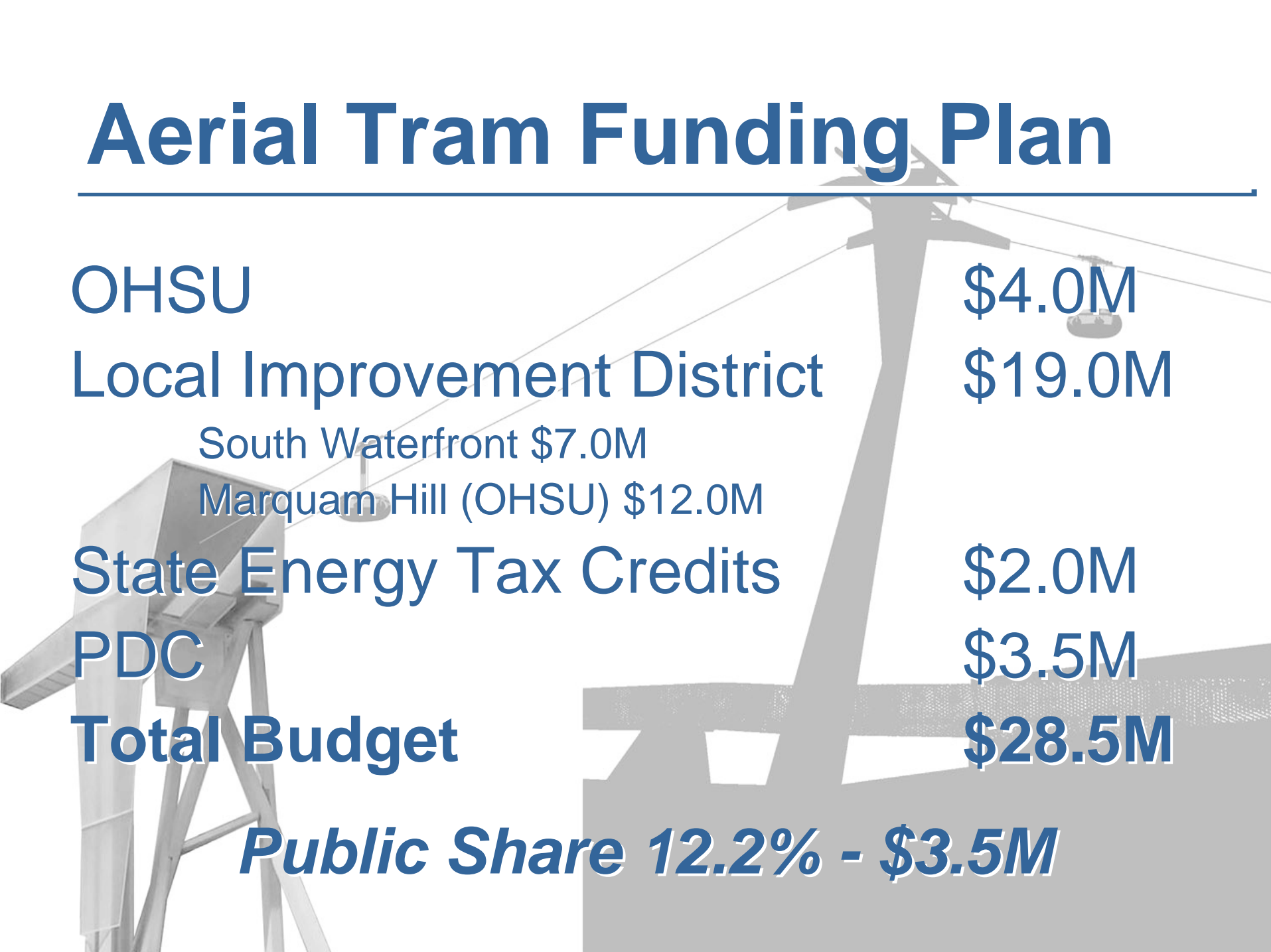
- ✓ Only area of disagreement
- ✓ Problematic Policy - Effect on other public projects
- ✓ Inconsistent with approach to improve neighborhood
- ✓ Funding Source?

Aerial Tram Cost Estimate



Tram Equipment:	\$7,245,700
Structures (includes 10% contingency)	
Upper Station	\$8,885,000
Lower Station	\$3,560,000
Intermediate Tower	\$3,680,000
Soft Costs (Design, PM)	\$4,384,300
Contingency (5%)	\$745,000
TOTAL	\$28,500,000

Aerial Tram Funding Plan



OHSU	\$4.0M
Local Improvement District	\$19.0M
South Waterfront \$7.0M	
Marquam Hill (OHSU) \$12.0M	
State Energy Tax Credits	\$2.0M
PDC	\$3.5M
Total Budget	\$28.5M

Public Share 12.2% - \$3.5M

Aerial Tram Operating Budget

Labor	\$652K
Materials and Services	\$88K
Capital Reserve	\$100K
Contingency	\$75K
Total Budget	\$915K

- OHSU Pays based on ridership
- OHSU Share - 85%, City Share -15%

Next Steps - Aerial Tram

- Construction RFPs due 6.15.04
 - LID Hearing - 7.29.04
 - Complete Design Development (6.18.04)
 - Tram Equipment Order (9.30.04)
 - Complete Construction Docs. (12.31.04)
 - Construction 1.28.05 - 2.15.06
 - Burn-in and Testing 2.15.06 - 3.31.06
 - Project Open to Public 3.31.06
- 
- A faint background image of an aerial tram system. It shows a tall, grey support tower with a cross-arm structure. A cable runs from the tower across the top of the frame. A small, dark, oval-shaped cabin is suspended from the cable on the right side. The overall image is in a light, semi-transparent grey tone.

Council Actions

- **1. Resolution:** Approve Tram Design, Neighborhood Improvements
- **2. Resolution:** Declare intent to form Local Improvement District, Set Hearing Date (7/29/04)
- **3. Ordinance:** Amend contract with Portland Aerial Transportation, Inc. for completion of tram design

Local Improvement District

- \$19.0 Million LID
- OHSU – Marquam Hill - \$12.0M
- South Waterfront - \$7.0M
- Assessment Based on Distance from Tram Landing (South Waterfront)
- Three zones defined in SoWa
- 81% Total Support
- 48.5% Support in South Waterfront
- Resolution to set hearing date (7/29)

Portland Aerial Tram

City Council Presentation
June 10, 2004

