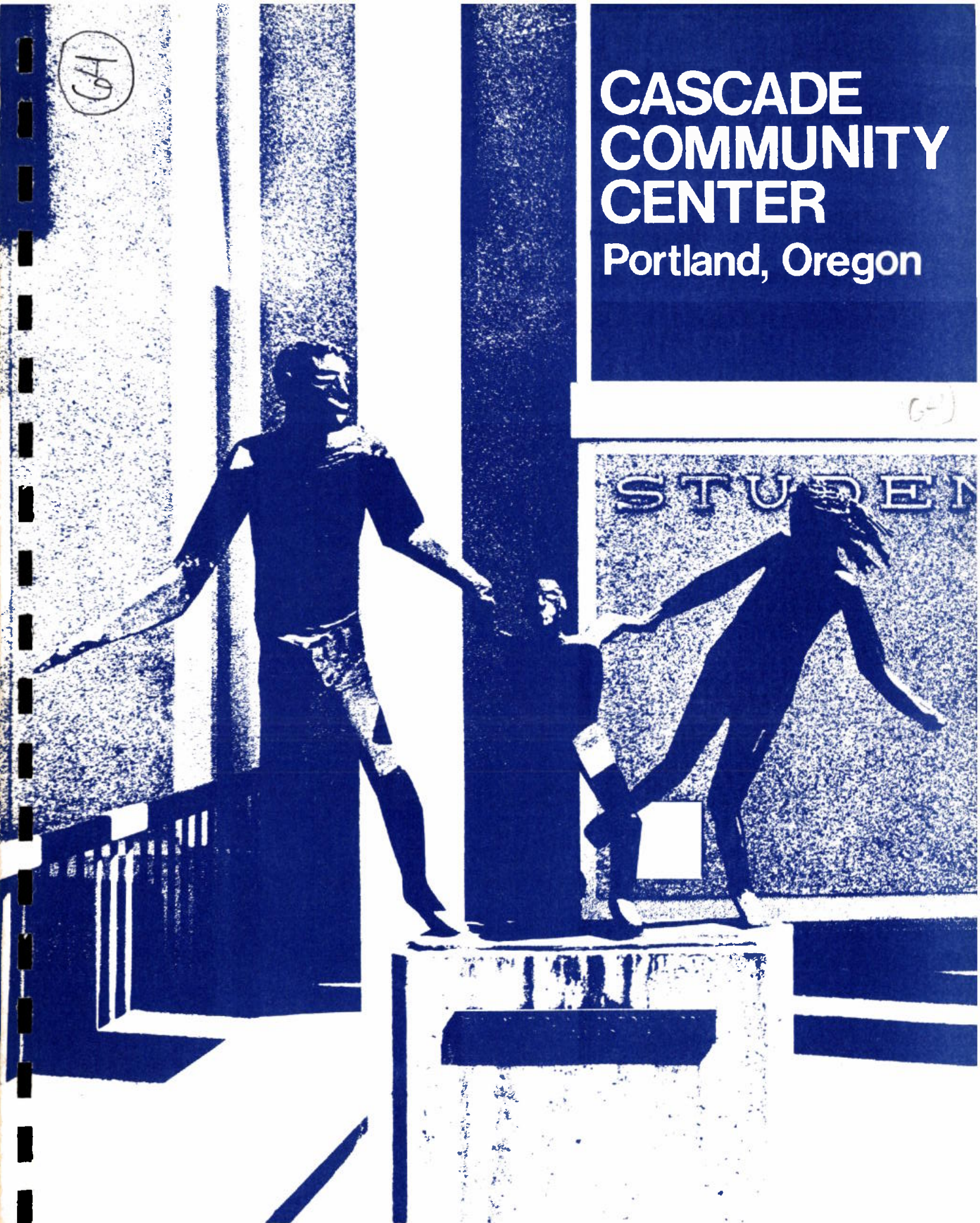


# CASCADE COMMUNITY CENTER

Portland, Oregon





# CASCADE COMMUNITY CENTER

The Cascade Community Center is a proposed facility located within the Model Cities Project in North Portland. It is bounded by Peninsula Park on the north, N. Killingsworth St. on the south, N. Albina Ave. on the west, and N. Congress Ave. on the east.



This report was prepared for the Cascade Community Center Task Force by Senior Deputy City Attorney for Grants-in-Aid and the Portland City Planning Commission.

October, 1969

## TABLE OF CONTENTS

	<u>Page</u>
a) Purpose and Beneficiaries	1
b) Content and Operation	5
c) Timetable	12
d) Funding	13
e) Project Administration	14
f) Coordination	16
g) Evaluation	17
h) Citizens Participation	18
i) Resident Employment	19
Budget	20

## APPENDIX

(a) Purpose and Beneficiaries

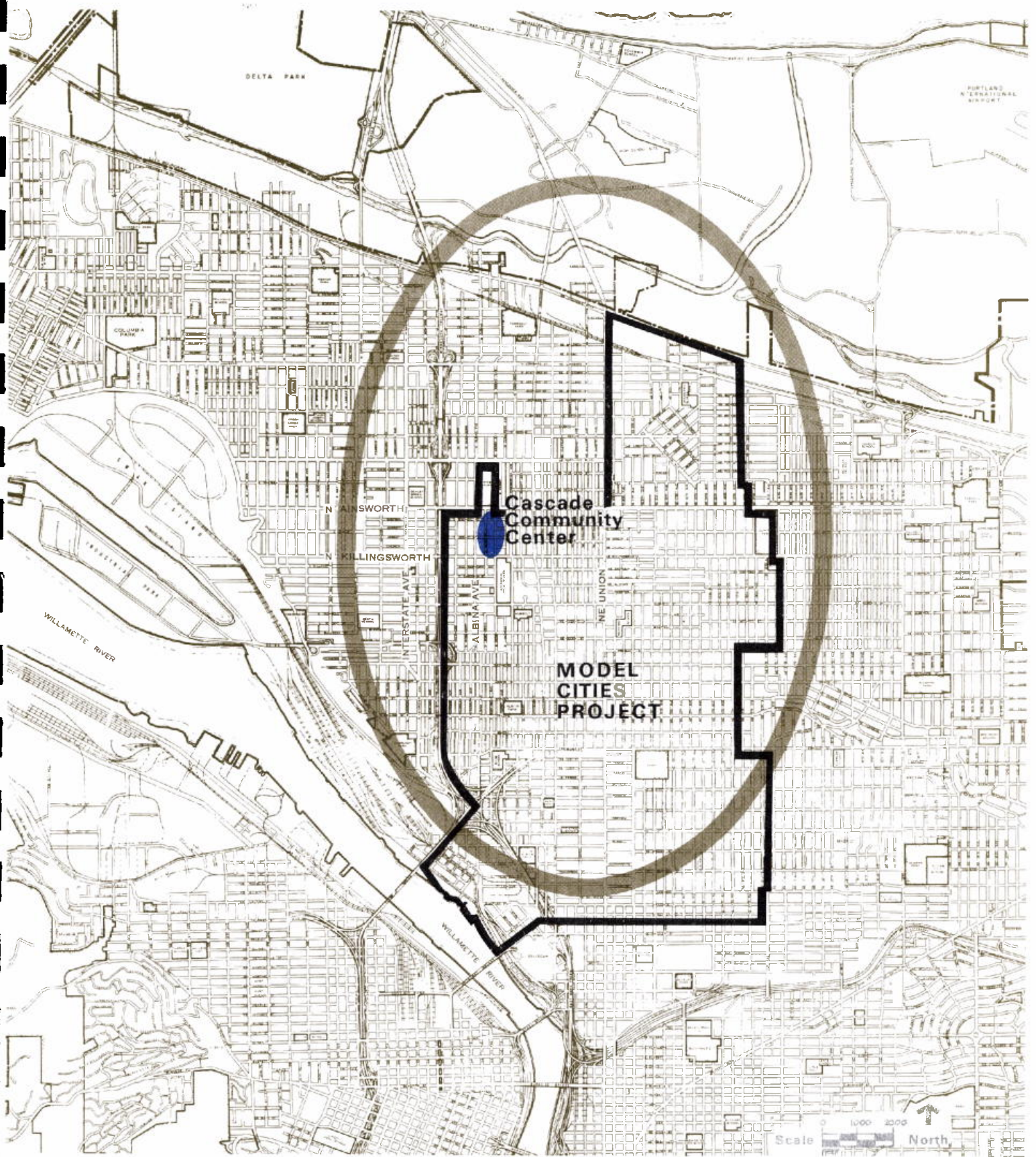
This component will establish within the Model Cities area a community center oriented to cultural enrichment, adult education, career training, community activities, career selection, personal vertical mobility and community service entry.

The component will 1) acquire the facility for operation by the operating agency and 2) establish the Model Cities Program as a strong force for future development of the facility. The component will not operate the facility.

The enclosed map of the Portland area indicates the site of existing facilities offering community service programs to the general public. Many residents of the Model Cities area now attend these facilities; however, this present offer does not fill the need of the Model Cities area because of the difficulty of transportation to the facilities and because the residents of the area do not now have an opportunity to participate in the formation and development of the program.

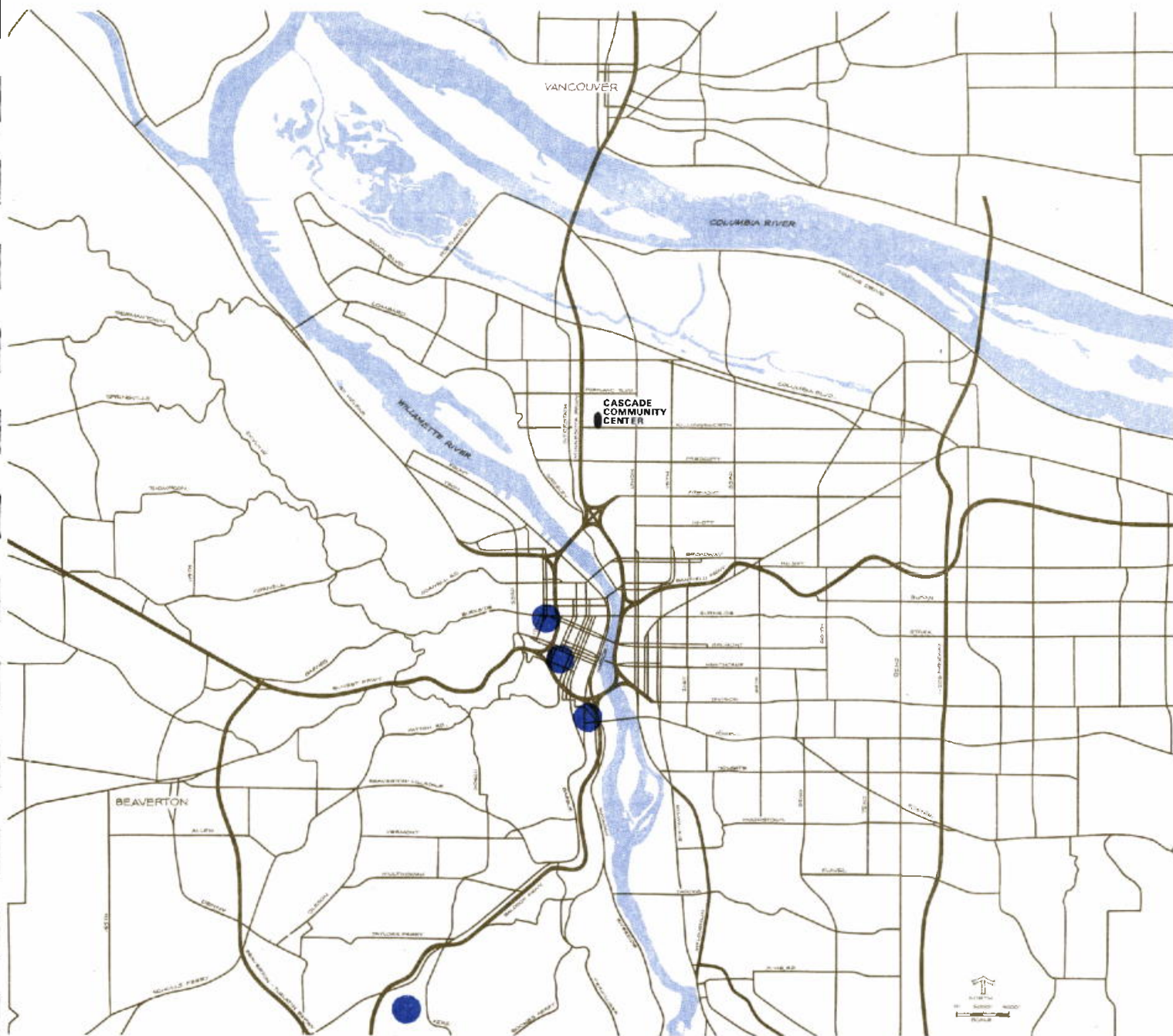
It is the intent of this program to so specialize a community center that it will be especially attractive to those residing in its immediate vicinity. The anticipated service area for this project is shown on the following map. The reader will note that this service area forms an ellipse and that the service unit is not in the exact center of the ellipse. The ellipse projects the primary service area, based upon





# CASCADE COMMUNITY CENTER SERVICE AREA





## PORTLAND, OREGON

● Tax-Supported Colleges

transportation routes and facilities. While the primary intent of the facility is to meet the needs of the residents of the Model Cities area, service to citizens beyond the Model Cities boundary will result; and the quality of services offered, coupled with the metropolitan image of the participating institutions, will be such as to identify the facility with the entire community. Therefore, the project will effectively tie the Model Cities neighborhood to the entire Portland area. This will contribute to the long-range success of the program in that it will not be identified as an exclusive ghetto project with a substandard image.

The report, "Model Cities, Hope for the Future?", prepared for the Portland Model Cities Program, September 1968, by the Albina Neighborhood Service Center, describes the employment characteristics of the Model Cities Neighborhood and points out that the median income for the Model Cities area was only \$5,000, a figure less than the average Portland family income eight years prior. It is also stated that income characteristics range from 47 percent of the households in the core area reporting less than \$3,000 for 1967 to 20 percent of the households in the East Model Cities area reporting incomes under \$3,000. Portland's Community Renewal Program published in 1965 reported similar findings and described almost all the Portland Model City area family incomes as ranging from 40 to 70 percent less than \$3,000 to 10 to 19 percent less than \$3,000.

It is noted in the report, "Model Cities, Hope for the Future?", that the proportion of heads of households without a high school diploma ranges from 68 percent in the core area to 28 percent at the fringes; and that while 22 percent in the entire area have some post high school training, 93 percent of that 22 percent live outside the core of the Model Cities area.

This project will make available to the Model Cities residents opportunities to participate in community activities conducted at the center, which activities will provide participants with broad opportunities for personal enrichment.

The aforementioned study, Model Cities, Hope for the Future?", points out in the narrative, commencing at Page 11, that a substantial number of residents of the Model Cities area question the relevancy of the material offered in the public school system. In comparing that data, the report found that persons who participated in community activities were more likely to feel that the material offered in the public school system was relevant. From this fact it may fairly be concluded that community participation in the subject project through the Model Cities planning system and through participation in the projects offered at the center will reinforce the community's acceptance of this project.

The primary beneficiaries of the project, because of the above facts, will be the residents of the Model Cities area.



3.45 (4)

The beneficiaries will participate in guiding the project by an Advisory Council on which Model Cities membership will be assured. The Advisory Council will be provided such information and reports as they find appropriate for their consideration of the project, and they will survey the project area to determine the sort of activities which will excite interest and involvement within the community. The Advisory Council will then discuss their findings with the operating agency, Portland Community College.

This project does not involve the expansion of activities already underway in the Model Cities area. The Portland Community College has been conducting limited activities in the area, which include walk-in adult education at the Boise and the King Schools and adult education at the Cascade site. Based upon the response from this limited project, it is anticipated that the subject proposal will meet with unusual success.

The thrust of this component is aimed at the goals stated in the Model Cities Plan at 4.40 through 4.46. In particular, the reader should see 4.44 (3) F.

(b) Content and Operation

The Portland Community College, the operating agency, in cooperation with Portland School District No. 1, Portland State University, the Young Men's Christian Association of Portland, and the Boys' Club of Portland will inaugurate a new educational facility in the Model Cities area, if the space can be acquired.

This consortium can provide an Educational Service Center that is comprehensive, providing in one location a broad range of services. Programs for all age groups, children to senior citizens, would be implemented. The cooperating institutions will provide complementary and cooperative programs that will avoid duplication, competition, and fragmentation. The participating educational institutions have programs designed to meet the various needs of the citizens in the Model Cities community. The YMCA is now utilizing the gymnasium to serve community recreational needs, while Portland Community College is currently offering a limited course for adults and older children. The Cascade College facilities are now for sale; and if they are not acquired for this project, these limited services to the Model Cities area may terminate.

Headstart programs will be provided to serve deprived children; and day care programs, to serve families whose mothers must obtain employment outside the home. Learning



experiences will be designed to aid youth and adults in obtaining employment. Learning resource materials will be made available to the community through expanded library space, materials, and service. This will be in addition to the North Portland Branch of the Multnomah County Library, located across Killingsworth Street from the Cascade Center.

Services related to the educational enterprise will be provided to meet the family, social, and medical needs of the community. Included could be the counseling services stated in the Portland Model Cities Proposal and health care services, such as a dental clinic needed to serve North Portland.

With the above as an overview of the project, we now present more explicit aspects of the programs proposed for the Cascade Community Center.

#### PORTLAND COMMUNITY COLLEGE

Portland Community College will operate the facility and implement various programs in conjunction with the other participants at the Cascade Community Center. Specific programs suggested by Portland Community College are as follows:

- 1) To provide educational opportunity for young adults who plan two years of higher education in the arts and sciences. Included in this would be such courses as English, Mathematics, Foreign Languages, Social Sciences, Physical Sciences, and the Life Sciences. Should the student be inspired or motivated to seek additional degree studies, these courses would be generally transferable.

- 2) To offer programs or courses to students who seek two years or less of technical, vocational, or semi-professional training. Required in this category would be offerings such as Drafting, Welding, Salesmanship, Electronic Assembly, Business Education, and Mid-Management Training.
- 3) To provide general education or lower division courses for the student bound eventually for the four-year college who desires to spend his freshman and sophomore years in a smaller and more intimate atmosphere. More counseling and guidance services would be available than in larger four-year institutions.
- 4) Provide opportunities for people now employed to improve their present skills to prepare themselves for advancement, to change their employment, or to expand their general education. Workers could take the classroom portions of their apprenticeship programs at this Center. Offerings would be available to unemployed adults wanting to learn new skills so as to become employable.
- 5) To provide opportunities for adults, young and old, to earn high school diplomas or possibly college diplomas through part-time or full-time study.
- 6) To serve senior citizens by providing educational and related activities to develop new interests and make new acquaintances for their physically less active years.



- 7) To serve families by providing courses in Parent Education, Homemaking, and Child Care. Also, Day Care programs would be provided for working mothers. Courses and assistance to housewives seeking preparation for employment or re-employment outside the home would be provided. General Interest courses such as Gardening, Home Economy, Interior Decorating, Woodworking, and Counseling would be added.
- 8) To provide Basic Education for individuals seeking to improve their opportunities for employment advancement.
- 9) Courses which can be started at Cascade Community Center without delay by Portland Community College are:

Basic Education

Adult Education

Job Finding Techniques

Job Placement

Day Care

Library as a Community Center

Career Selection Counsel

Food Services

Multi Clerical

Study Skill Center

#### PORTLAND STATE UNIVERSITY

- 1) To assist in the development of the service/educational/training activities of the contemplated Cascade Community student body. These activities could range from social services, vocational rehabilitation, mental health, community welfare, teacher-preparatory counseling, to intern training for para-professional positions.
- 2) To extend the School of Education's Graduate intern program into the area.

- 3) To establish a pilot community development program (with the School of Social Work).
- 4) To develop an experimental data bank system for the area (with the Columbia Region Association of Governments and the Northwest Regional Education Educational Laboratory).
- 5) To establish an experimental inner-city school program (with the School of Education and the Northwest Regional Educational Laboratory) including the training of teachers for inner city and ghetto schools.
- 6) To train indigenous persons for "para-professional" positions in the area in conjunction with the School of Social Work.
- 7) To assist in the evaluation of existing or proposed programs with the Citizens Planning Board.
- 8) To extend the community service programs such as the TTT (Triple T) project, experimental program of complementary high schools, Albina Center, Project Teach and Black Studies into the Cascade Community Center.
- 9) To develop a teacher-aid program involving Portland Community College and Portland State University.

PORTLAND SCHOOL DISTRICT NO. 1

The Portland Public Schools will conduct programs that are within their legal responsibilities, provided the citizens of the area request certain programs and services. A program to be



conducted is an Early Childhood Education Program to provide a headstart for as many four-year-olds as can be accommodated with funds available. A primary concern of the School District is to meet the special needs of youth who are unable to profit from the regular school program and therefore require additional or specially designed programs.

#### YMCA

The Portland YMCA has interest in a partnership use of the Cascade Community Center in the following ways:

- 1) By providing a Community Recreation/Sports program for the youth of the area that would operate year around. This would be expanded to include adult programs as resources permit.
- 2) The YMCA is ready to undertake a role in the broader development of a program that would provide area residents "Training for Volunteerism". Included would be instruction and training of area residents for participation in volunteer leadership functions in the Community. This would be designed to provide a linking mechanism between "graduates" of the Community Center and volunteer jobs in the Community. Also, this program would provide a linking mechanism between area residents and the various opportunities available to them at the Center.

BOYS' CLUBS OF PORTLAND

The Boys' Clubs are traditionally located in the areas of crowded housing and low income where a need for adult leadership exists. The Boys' Clubs of Portland have expressed a desire to participate in this project by making their program available to the Model Cities Program, and they have assured the Model Cities Planning Board of their cooperation and leadership in youth activities. The Boys' Clubs program will be a substantial asset to this endeavor.

(c) Time Table

The City of Portland, the CDA, will contract with the Portland Community College, agreeing that for a specific sum the Portland Community College will purchase the herein described facility and operate the program as described.

Model Cities supplemental funds will be transferred to the College under the agreement, and the College will purchase the facility. It is anticipated that the facility can be purchased within three months but that the programs will commence immediately upon HUD approval of the use of supplemental funds.

In anticipation of the approval, the Portland Community College is now arranging for programs on a temporary basis which will avoid delay when this project is approved.

Upon approval, the Advisory Council will be formed and will commence their task of reviewing information collected from the community and making their recommendations available to the operating agency.

The project will be completed within one year. The Advisory Council can continue to pursue their responsibilities within the Model Cities administrative structure.

In preparation for this project, the City requests immediate approval of the Budget Item Attachment 2a (4) Professional Services, \$25,000.00, so that appraisers may be engaged immediately.

(d) Funding

Cascade College, the present owner of the facilities is involved in a mortgage foreclosure. The mortgage being foreclosed is a lien on the part of the property which this project anticipates acquiring, and there are numerous other financial obligations of the college which may constitute a lien on the various parcels. Because of this, the Portland Community College will utilize the services of a title company as escrow to complete the purchase. By doing this, the City of Portland, and the Portland Community College will be assured by way of title insurance that good and sufficient title to the land will be acquired.

A building which is essential for this project is now under mortgage by Cascade College to the Department of Housing and Urban Development. This building is the Student Union Building, which is one of two buildings pledged as security for an obligation which exceeds \$2,100,000. Before acquisition of the facilities for this project can be completed, a plan for the permanent use of this building as part of the project must be established. In this regard, the City is now in contact with Mr. Glen Lathrop, DHUD, Seattle.



(e) Project Administration

The Model Cities Citizens Planning Board has requested that Portland Community College serve as the prime sponsor of the Cascade Community Center. Letters in this regard are included at Pages 1 and 2 in the Appendix. As such it will be the administrative agency responsible for the operation of the campus. Other participating institutions will relate to the prime sponsor in scheduling and coordinating the various programs.

Portland Community College was established in 1889 as the Adult and Vocational Education Department of the Portland Public School District. It continued as an integral arm of the District until 1961 when the State Legislature made it a separate entity, operating under the direction of the School District. In 1968, the electorate of the metropolitan area, including parts of five counties, established the Portland Community College as a separate district with a tax base netting more than \$4,000,000 per year. The school offers a wide range of vocation and academic studies in 18 locations.

The specific program for future years cannot be determined at this time. It is the intent of this component to place the Model Cities Program in a position to:

- 1) Establish this facility in the area.
- 2) Establish the Model City Program as a strong force for future development.

No staff will be required for this project. The staff for operation will be provided from local sources.

The CDA will coordinate this project with other Model Cities projects through the Advisory Council. The CDA will provide such help as the Council may require.

(f) Coordination

The Advisory Council with the aid of the evaluation process will coordinate the activities of the operating agency and sub-agencies with the Model Cities Program. The following section, entitled (h) Citizens Participation, explains the function of the Advisory Council and their role in the programming of activities at the proposed center.

(g) Evaluation

The project evaluation will be conducted by the CDA in cooperation with the Advisory Council. This project is to:

- 1) Establish this facility in the area.
- 2) Establish the Model City Program as a strong force for future development.

So that evaluation may be conducted and the cost benefit to the neighborhood determined, it will be based upon the involvement of the residents of the Model Cities community in the program and the general community acceptance of the program.

The Advisory Council is the organization which will provide continued coordination of this project with the operation of the Model Cities Program and in that capacity will consider the evaluation information collected and recommend policies and procedures which they find appropriate.



(h) Citizens Participation

An Advisory Council will be established, composed of one representative from each participating agency or institution and members of the Model Cities Citizens Planning Board. The Council will be responsible for programs instituted at Cascade Community Center. No program will be instituted without the approval of the Model Cities Planning Board. The Planning Board will serve as a means for the citizens of the area to express their desires regarding community needs which could be served by the Cascade Community Center and will work with the operating agency through the Advisory Council.

The objective of this program is to achieve maximum community interest and participation in the project. It will be the responsibility of the Model Cities Citizens Planning Board and the Advisory Council to exert every reasonable effort to achieve this objective.

(i) Resident Employment

The scope of this project is to make facilities available for the proposed program. The operation of the program is not within its scope. There are no employment opportunities, therefore, within this project.

## U.S. DEPARTMENT OF HOUSING AND URBAN DEVELOPMENT

## BUDGET FOR SUPPLEMENTARY GRANT CAPITAL PROJECT

(Use This Form as a Budget for Each Capital Project Funded  
Under Section 105 of Title I of the Demonstration Cities and  
Metropolitan Development Act of 1966)

## 1. NAME OF CITY DEMONSTRATION AGENCY

CITY OF PORTLAND

## 2. BRIEF DESCRIPTIVE TITLE OF CAPITAL PROJECT

Cascade Community Center, purchase facilities for

## 3. NAME, ADDRESS AND ZIP CODE OF OPERATING ENTITY

Portland Community College  
12000 S. W. 49th Avenue, Portland, Oregon

## 4. TYPE OF ENTITY - Is the entity a (Check applicable box or boxes):

☐ City Department☒ Public Agency☐ Neighborhood-based☐ Private (Nonprofit)☐ Private (Profit Making)☐ Other (Specify)

## 5. PREVIOUS APPLICATION - Has this capital project, in substantially its present form, ever been the subject of a previous application for Federal financial assistance?

☒ NO☐ YES

If "YES", attach an explanatory statement.

## 6. MAINTENANCE OF EFFORT - Any capital project which is an extension to the Model Neighborhood or an upgrading of existing services must be accompanied by an explanatory statement which shows that the extension or upgrading being funded by this budget is an addition to and not a substitution of local efforts.

Not Applicable

## 7. METHOD OF ALLOCATION - If cost is to be shared by others, add an explanatory statement which identifies the sharing entity (or entities) and the method of allocation.

Operation is not part of this project. Future operating costs of the project will be born by the operating agency.


## 8. CAPITAL PROJECTS - If development of capital project will cover more than one year and portion being funded is not a divisible unit which is viable, attach the required certification.

Not Applicable

## 9. BUDGET

a. COST CATEGORY*	b. ESTIMATED COST	c. MCA SHARE (If cost is being shared with others)
(1) Property Acquisition	\$826,000	100%
(2) Land Improvements	---	---
(3) Construction	---	---
(4) Professional Services	\$ 25,000	100%
(5) Carrying Charges	---	---
(6) Other:		
<b>TOTAL</b>	<b>\$851,000</b>	<b>100%</b>

## 10. SUBMISSION:

a.  MAYOR  
Signature and Title of Authorized Official

b. October 15, 1969  
Date

## 11. APPROVAL:

a. \_\_\_\_\_  
Signature and Title of Authorized HUD Official

b. \_\_\_\_\_  
Date

## \* Definition of Items:

- Property Acquisition — The cost incident to the acquiring of land and structures (and the cost of demolition if necessary).
- Land Improvement — The cost of site improvements such as landscaping.
- Construction — The cost of construction, rehabilitation, alteration and repair.
- Professional Services — The cost of professional services rendered by individuals or organizations including legal, accounting and architectural services.
- Carrying Charges — The cost of items such as taxes, interest and insurance premiums incurred during construction.



## U.S. DEPARTMENT OF HOUSING AND URBAN DEVELOPMENT

## BUDGET JUSTIFICATION

(Attach This Form to Each Budget for a Capital Project,  
Activity, and to the Program Administration Budget)

## 1. NAME OF CITY DEMONSTRATION AGENCY

CITY OF PORTLAND, OREGON

## 2. BRIEF DESCRIPTIVE TITLE OF CAPITAL PROJECT OR ACTIVITY

Cascade Community Center

## 3. NAME, ADDRESS AND ZIP CODE OF OPERATING ENTITY

Portland Community College  
12000 S. W. 49th Avenue, Portland, Oregon

4. DESCRIPTION OF ITEM* AND BASIS FOR VALUATION**	AMOUNT OR VALUE OF ITEM
<u>Description of Property</u> Block 3, Lot 6, the south half of Lot 5, Lots 4, 3, 18, 17, 16, 15, 14, 13, 12, and 10 Block 4, Lots 1, 2, 3, 8, 9, 10, 11, 16, 17, 18, the south 15 feet of Lots 4 and 15, and the north one-half of Lots 7 and 12 Block 5, Lots 1, 2, 3, 6, 10, 9 and 8 Block 6, Lots 1, 1, 2 and 4 Block 8, Lots 1 and 3 Block 9, Lots 18, 17, 16, 14, 4 and 5 Block 10, Lots 13 and 18 Block 16, Lot 9 Block 17, Lots 8 and 10 West Piedmont Addition, City of Portland, Oregon And all personal property and fixtures used in conjunction with the Cascade College facilities.	\$826,000
Professional Services	25,000

\* For personnel costs use Personnel justification form.

\*\* Describe the item in sufficient detail to insure that it is adequately identified and indicate the basis for determining or computing its value. For example, office space rental for two professionals: 150 square feet at \$2.00 per square foot, including utilities and janitorial services.

The basis for evaluation was established for the City by Ralph Walstrom, "Property Counselors" of Portland, Oregon. Prior to purchase, value will be established by two complete appraisals. The professional services include appraisals, title policies and escrow fees. This estimate is based upon current cost for

HUD-7042 (10-68) this service in Portland - and is sufficient for a third appraisal should one be required.

## U.S. DEPARTMENT OF HOUSING AND URBAN DEVELOPMENT

## PERSONNEL

(Attach This Form to Each Activity Budget Justification)

1. NAME OF CITY DEMONSTRATION AGENCY

NOT APPLICABLE

2. BRIEF DESCRIPTIVE TITLE OF PROJECT OR ACTIVITY

3. NAME, ADDRESS AND ZIP CODE OF OPERATING ENTITY

e. NUMBER OF PERSONS	b. POSITION OR TITLE	c. AVERAGE SALARY MONTH	d. PERCENT OF TIME ON UNDERTAKING	e. MONTHS TO BE EMPLOYED	f. COST (c x d x e)
	NONE				

COST OF FRINGE BENEFITS (Indicate Basis for Estimate)

TOTAL, PERSONNEL	
TOTAL, PERSONNEL	

## BUDGET SUMMARY

## 1. NAME OF CITY DEMONSTRATION AGENCY

PORTLAND, OREGON

## 2. BUDGET

a. UNDERTAKINGS	b. ESTIMATED COST	c. MCA SHARE
(1) Program Administration (Year 1969-70 6.703	489,600	391,680
(2) Projects and Activities		
(a) 3.42 Education Aides	\$ 983,920	\$ 98,392
(b) 3.43 Pre-School Expansion	485,376	48,538
(c) 3.44 Secondary & Con. Educa. l	485,959	25,907
(d) 3.61 Health Ins.	21,000	7,000
(e) 3.81 Res. Dev. Prog. Design	50,000	50,000
(f) 3.121 Pre-NDP Planning	181,774	181,774
(g) 3.141 Police Comm. Relations	385,038	128,346
(h) 3.142 Police Intern Program	126,977	22,326
(i) 3.143 Elem. Police Education	49,332	16,444
(j) 3.160 Youth Activities Plnng.	37,330	37,330
(k) 3.185 Consumer Protection	62,590	31,295
(l) 3.186 Multi-Service Centers	166,750	166,750
(m) 3.201 Trans. Service Center	171,786	57,205
(n) 3.45 Cascade Com.Center	851,000	851,000
(o) 3.21 Employ. Relations Com.	62,366	62,366
(p) 3.22 Operation Step-up	336,626	336,626
(q) 3.31 Community Dev. Program	598,381	598,381
(r) 3.62 Mentally Retarded	292,522	29,252
(s) 3.010 Comm. Legal Services	237,549	79,182
(t) 3.181 Total Care for Aged	303,935	60,787
SUBTOTAL		
(3) TOTAL		

## 3. SUBMISSION

a. \_\_\_\_\_  
Signature and Title of Authorized Officialb. \_\_\_\_\_  
Date

## 4. APPROVAL

a. \_\_\_\_\_  
Signature and Title of Authorized HUD Officialb. \_\_\_\_\_  
Date

## BUDGET SUMMARY

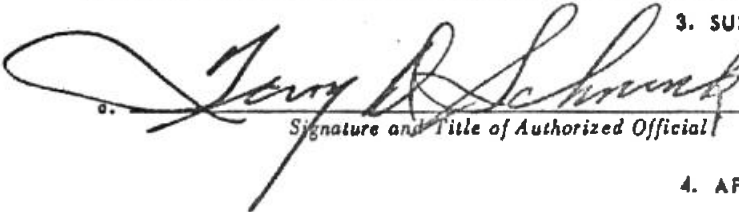
## 1. NAME OF CITY DEMONSTRATION AGENCY

PORTLAND, OREGON (continued)

## 2. BUDGET

a. UNDERTAKINGS	b. ESTIMATED COST	c. MCA SHARE
(1) Program Administration (Year 1969-70 (Page 2))		
(2) Projects and Activities		
(u) <del>3,182</del> Comprehens. Child (b) Care	\$ 657,678	\$ 164,419
(v) <del>6,735</del> Evaluation	300,000	300,000
(e)		
(f)		
(g)		
(h)		
(i)		
(j)		
(k)		
(l)		
(m)		
(n)		
(o)		
(p)		
(q)		
(r)		
(s)		
(t)		
SUBTOTAL		
(3) TOTAL		\$3,745,000

## 3. SUBMISSION

a.   
Signature and Title of Authorized Official

b. October 15, 1969  
Date

## 4. APPROVAL

a. \_\_\_\_\_  
Signature and Title of Authorized HUD Official

b. \_\_\_\_\_  
Date



## U.S. DEPARTMENT OF HOUSING AND URBAN DEVELOPMENT

## RELOCATION PAYMENTS

(Attach This Form to the Relocation Activity Budget Justification)

TYPE OF PAYMENT AND CLASS OF PAYEE	ESTIMATED NUMBER TO RECEIVE PAYMENTS	ESTIMATED AVERAGE AMOUNT	ESTIMATED TOTAL PAYMENTS
<b>1. TOTAL MOVING EXPENSES AND ACTUAL DIRECT LOSS OF PROPERTY (a + b + c)</b>	NOT APPLICABLE	\$ NOT APPLICABLE	\$
a. Individuals			
b. Families			
c. Business Concerns			
<b>2. TOTAL SETTLEMENT COSTS AND RELATED CHARGES (d + e + f)</b>			
d. Individuals			
e. Families			
f. Business Concerns			
<b>3. ADDITIONAL RELOCATION PAYMENT (g + h)</b>			
g. Elderly and Handicapped Individuals			
h. Families			
<b>4. TOTAL REPLACEMENT HOUSING PAYMENT (i + j)</b>			
i. Owner-Occupant Individuals			
j. Owner-Occupant Families			
<b>5. TOTAL SMALL BUSINESS DISPLACEMENT PAYMENTS</b>			
<b>LINE TOTAL (1 + 2 + 3 + 4 + 5)</b>			

**APPENDIX**

# Model Cities

Phone 288-7051

Room 210 • 5329 N.E. UNION AVENUE

# Portland

OREGON 97211

July 1, 1969

Hon. Terry D. Schrunk  
Mayor of Portland  
City Hall  
Portland, Oregon 97204

Dear Mayor Schrunk:

The Citizens Planning Board of the Model Cities Agency is very anxious that the desires of the residents of the Model City Neighborhood be given full consideration in the formulation of plans for future uses of Cascade College. During our months of planning, many suggestions have been made as to ways in which the facilities of the college could be used to make possible the realization of our goals for the educational, vocational, and cultural enrichment of the Model City area.

Now that it appears that the college plant is to be available for new uses, we strongly desire that the proposals for its use should be put into unified form. The Model Cities Citizens Planning Board met in special session June 25, 1969, and agreed that the Portland Community College is the appropriate agency to operate a community center at the Cascade College site. To facilitate this plan, the Model Cities Citizens Planning Board has asked the Task Force to investigate possible financial participation by the Model Cities Program in this venture. It is understood that agencies other than the Portland Community College will be involved in the services offered at the proposed facility. The Board sees as essential participants in such work School District No. 1, Portland Community College, Portland State University, the YMCA, and other local agencies providing recreational, cultural, and vocational programs.

Such help as you may give in this regard would be appreciated.

Sincerely yours,

*Alvin R. Batiste*  
Alvin R. Batiste  
Director

PORTLAND  
COMMUNITY  
COLLEGE



12000 SOUTHWEST 49th AVENUE, PORTLAND, OREGON 97219 • (503) 224-3040

Amo DeBernardis, president

COMMUNITY  
COLLEGE BOARD  
Howard Cherry, chairman  
Manley J. Bakkensen  
Robert A. Bissett  
Hugh McGilvra  
Lewis C. Nickerson  
Carl R. Neil  
Robert E. Thompson

July 1, 1969

Mr. Lloyd Keefe, Chairman  
Task Force on Cascade Community College Property  
City Planning Commission  
424 S. W. Main  
Portland, Oregon 97204

Dear Mr. Keefe:

It has been a pleasure to work with the Task Force. The meetings with the Model Cities Planning Board have been most interesting and enlightening.

In our discussion, the Model Cities Planning Board have made strong recommendation that Portland Community College serve as a prime sponsor of obtaining the Cascade College site and developing it into a community educational and service facility. I have discussed this with our Board and they are willing to have us move in this direction providing the budget, as outlined at our last meeting with representatives of the Task Force, becomes a reality. At the meeting it was indicated that it might be possible for Model Cities and HUD to develop a financially feasible program for the college to accept the sponsorship and operate the unit for the good of the total community. We believe that this could be a most significant development for the area.

Sincerely yours,

Amo De Bernardis  
President

ADB va

RECEIVED  
JUL 2 1969  
Portland  
City Planning Commission



## PORTLAND PUBLIC SCHOOLS

631 NORTHEAST CLACKAMAS STREET  
PORTLAND, OREGON 97208

OFFICE OF THE SUPERINTENDENT

June 5, 1969

Mr. Rodney O'Hiser  
Portland City Planning Commission  
424 S. W. Main Street  
Portland, Oregon 97204

Dear Mr. O'Hiser:

The primary function of School District #1 is to provide educational programs for children from kindergarten through grade twelve throughout this district. In addition, the Board of Education has authorized the district to conduct an Early Childhood Education Program to provide a headstart for as many four-year-olds as can be accommodated with the funds available from the federal government. Responsibility for adult education, which formerly rested with the school district, is now in the hands of the Portland Community College. Recreation programs generally are conducted by the city.

The greatest unserved need in educational programs that fall within the province of the public schools is to provide special programs for those youth who are unable to benefit from the regular school program--the so-called dropout or alienated youth. It is toward this end that the school district needs to develop additional facilities and programs that will enable these youth to become productive, contributing members of our community.

The school district is desirous of working cooperatively with all agencies and organizations seeking to improve the quality of education and life in Portland or any of its neighborhoods. If the Cascade College site becomes available as a center, the school district will participate in the center by conducting programs that are within the scope and responsibilities of the public schools as determined by the Board of Education.

Sincerely,

A handwritten signature in cursive script that reads "Harold A. Kleiner".

Harold A. Kleiner  
Acting Superintendent of Schools

HAK lm

PORTLAND STATE UNIVERSITY  
School of Social Work

May 23, 1969

M E M O R A N D U M

TO: Frederick J. Cox, Dean  
Office of Graduate Studies

FROM: Daniel E. Jennings, Acting Dean *DEJ*  
School of Social Work

SUBJECT: School of Social Work's participation in Cascade College Project

The Executive Committee of the School of Social Work discussed at its meeting today the idea of PSU's School of Social Work participating in a multi-service center and multi-educational level facility if such an operation is developed on a cooperative basis for operation at the site of Cascade College. The Executive Committee of the School is unanimous in recommending that the School of Social Work commit itself to proceed with exploring ways in which it could be involved in such an operation.

In reviewing some of the possibilities which participation in such a project would bring to the School, we reviewed the attached article by Professor Brieland of the School of Social Service Administration at the University of Chicago. Mrs. Waterman of our faculty had participated previously in some meetings related to the establishment of the Governor's Multi-Service Center in the Albina Area. In addition, Dr. Oscar Kurren and Mr. Lynn Thompson of our faculty have some more specific ideas as to what might be the nature of our School's participation in such a project.

I will be attending the National Conference on Social Welfare in New York City next week but ~~any~~one or all of the above-named members of our faculty would be interested in being of any further help to you that they could be during my absence. We shall look forward to hearing further from you about this very stimulating opportunity.

DEJ:th

Attach.

MEMORANDUM

May 26, 1969

To: Dean Fred Cox

From: Ray O. Wolf *ROW*

The School of Education is definitely interested in the possibility of a presence in North Portland and the probable availability of the Cascade College campus for this purpose.

We have one program presently in existence that could be housed there, the TTT (Triple T) project directed by Dr. David Willis and utilizing Jefferson High and Martin Luther King elementary schools as laboratories.

I have recently been in a discussion with Model School administrators concerning the possibility of a teacher-aid program involving Portland Community College and Portland State University. If it develops the Cascade setting for parts of the program would be ideal.

No doubt many other special programs will develop in the future.

ROW/bw



M E M O R A N D U M

May 27, 1969

TO: Fred Cox  
FROM: Lyndon R. Musolf *L/RM*  
RE: Cascade College Property

I cannot emphasize too strongly the position of the Urban Studies Center that we should not be in a position in which we appear to be trying to grab a piece of the action. We would be interested in undertaking a program or activity in the Cascade buildings only if invited by the residents of the area. We hope that this will be the position of the University. To be specific, we would be interested only if invited by the Citizens' Planning Board of Model Cities.

If such an invitation were extended, there are a number of things which we would consider doing for the area and with the citizens of the area. Among the possibilities are:

extension of our intern program into the area.

establishing a pilot community development program (with the School of Social Work).

developing an experimental data bank system for the area (with the Columbia Region Association of Governments and the Northwest Regional Education Educational Laboratory).

establishing an experimental inner-city school program (with our School of Education and the Northwest Regional Educational Laboratory) including the training of teachers for inner city and ghetto schools.

training indigenous persons for "para-professional" positions in the area.

evaluation of existing or proposed programs with area citizens.

assistance to citizens in the preparation of grant requests.

Many other ideas are possible and we are open to suggestions but in each case there must be a request by citizens through the Citizens' Planning Board.



## YOUNG MEN'S CHRISTIAN ASSOCIATION of Portland

May 22, 1969

### YMCA COMPONENT IN USE OF CASCADE COLLEGE FACILITIES

The Portland YMCA has interest in a partnership use of the Cascade College facilities following disposition in three ways.

#### I. Community Recreation/Sports Program: Gymnasium

We are presently using the gymnasium on a Saturday school year schedule to conduct a recreation/sports program for community youth. Our desire is to continue and expand this usage, plus negotiate a schedule for the summer and for adult programs.

#### II. Human Relation Laboratories: Student Union and Residence

There is repeated need for space to conduct cross-cultural, racial, and generational human relations laboratories during three day to two week periods for thirty to one hundred people. The YMCA would like to negotiate use of the student union, residence facilities, and small meeting rooms for such training experiences. We envision need for this space anywhere from once to fifteen times per year.

#### III. Pre-Apprentice Training: Residence Facilities

The YMCA is currently developing a pre-apprentice training program for young men (16-21). We are in need of residence facilities for ten to fifteen persons.

As a further interest, the YMCA is ready to undertake a role in the broader development and conduct of program in this new enterprise in the following ways:

#### IV. Training for Volunteerism of Area Residents

Conduct instruction and training of area residents for participation in volunteer leadership functions in the community.

HOWARD B. SOMERS, President; HOWARD A. RANKIN, Chairman of the Board; SANFORD M. REECE, Executive Director

BRANCH OFFICES: CLACKAMAS COUNTY BRANCH: P. O. Box 111, Oregon City • DOWNTOWN BRANCH: 831 S.W. 6th Avenue • JOHN R. LEACH BRANCH: 6036 S.E. Foster Road • NORTH BRANCH: 5430 N. Moore Avenue • NORTHEAST BRANCH: 1630 N.E. 38th Avenue • VANCOUVER-CLARK COUNTY BRANCH: 2000 N. 1st Avenue • WASHINGTON COUNTY BRANCH: 831 S.W. 8th Avenue, Portland, Oregon • CAMP COLLINS: Gresham, Oregon

V. Linkage To Volunteer Opportunities

Provide a linking mechanism between "graduates" of the community center and volunteer jobs in the community.

VI. Linkage of Residents to the Center

Provide a linking mechanism between area residents and the various opportunities available to them at the center.

# Boys' Clubs of Portland

AND THE TRI-COUNTY AREA, INC.

9204 S.E. HAROLD STREET - PORTLAND, OREGON 97266 - 775-1549

ROY J. CIAPPINI, EXECUTIVE DIRECTOR



## OFFICERS

JOHN KARAMANOS, JR.  
Chairman of the Board

IRVING ENNA  
President

JOHN HERMAN  
FORREST BERG  
Vice Presidents

BETTY MUMFORD  
Secretary

GEORGE C. SCOTT  
Treasurer

DON WILLNER  
Legal Counsel

JACK GOETZE  
Past President

## HONORARY MEMBERS

ANTHONY DuBAY  
FRED F. HOLCOMB

## BOARD OF TRUSTEES

PAUL AIL  
TED R. ASBAHR  
KEITH BARKER  
ROSS BELL  
HARVEY S. BENSON  
FORREST T. BERG  
FRANK E. BRAUNER  
ROBERT BURKHOLDER  
WORTH CALDWELL  
ANDREW COOK  
WARD COOK, JR.  
JACK CLENAGHEN  
L. GRAHAM COVINGTON  
MRS. MILDRED CUMMINGS  
RICHARD EMS  
IRVING ENNA  
HAL FISCHL  
AL GARD  
MARK M. GILL, JR.  
JACK GOETZE  
BROOKS GUNSUL  
DR. RUSSELL GUSTAVSON  
LYLE HAMMACK  
JOHN HERMAN  
DAVID HOWARD  
WILFRED E. JOSSY  
LEON JOUROLMON  
JOHN KARAMANOS, JR.  
BUNNY MASON  
CHARLES McCLELLAN  
RICHARD MILES  
WILLIAM MOORE  
MRS. BETTY MUMFORD  
MRS. IMOGENE OWEN  
VERN PEARSON  
DAVID RAWLINSON  
JOHN RIAN  
MILTON W. RICE  
GEORGE ROUCHES  
GEORGE C. SCOTT  
GEORGE H. SCHROEDER  
ROBERT STURGIS  
HARRY WARD  
WALTER WARE  
WILLIAM WESSINGER  
DR. MERTON WILSON

## ADVISORY COUNCIL

REV. GLENN BOARMAN, C.S.C.  
DONALD CLARK  
JAMES C. HOLZMAN  
AL MCCREARY  
DONALD McNAMARA  
DAN MERCER  
MORRIS ROGOWAY  
GENE ROSSMAN  
TERRY D. SCHUNK  
DON WILLNER  
SID WOODBURY

PAL BOYS' CLUB  
9330 S.E. Harold St.  
COLUMBIA BOYS' CLUB  
7703 N. Harford St.  
SELLWOOD BOYS' CLUB  
8210 S.E. 13th St.  
OPTIMIST ACRES CAMP  
Molalla, Oregon

July 14, 1969

Mr. Lloyd T. Keefe, Chairman  
Mayors Task Force on use of Cascade College  
City Planning Commission  
City Hall  
Portland, Oregon

Dear Mr. Keefe:

The Board of Trustees of the Boys' Clubs of Portland and the Tri-County Area, Inc., has had a deep concern for the needs of the youth of the area under consideration by the Model Cities Program. In the original survey to determine the scope of the program the Boys' Clubs submitted a proposal to operate a program for boys in that area of Portland. This proposal also indicated that such a program could be conducted as part of a multi-use facility serving all groups in the community.

We understand no final decisions have been made as yet regarding actual established agency participation but do want to assure you and your committee that we are most interested in assisting in furnishing ultimate services to the Model Cities Area.

As a member of Boys' Clubs of America, we are involved in many of the Model Cities projects throughout the country. Traditionally, Boys' Clubs are located in areas of crowded housing, and low income where a need for a constant building centered program under adult leadership is required.

I have taken the liberty of enclosing several pieces of literature which might better explain our purpose. The board of trustees through Irving Enna, President, Andrew Cook, Chairman of Development, and Frank Brauner, Model Cities Representative are vitally interested in the Boys' Clubs being included in planning and services to the Portland project and would appreciate being kept informed of future developments.

RECEIVED

JUL 15 1969

Portland

RJC:wmk  
ENCLOSURE

City Planning Commission

REMEMBER THE BOYS CLUB IN YOUR WILL

Sincerely,

Roy J. Ciappini  
Executive Director

