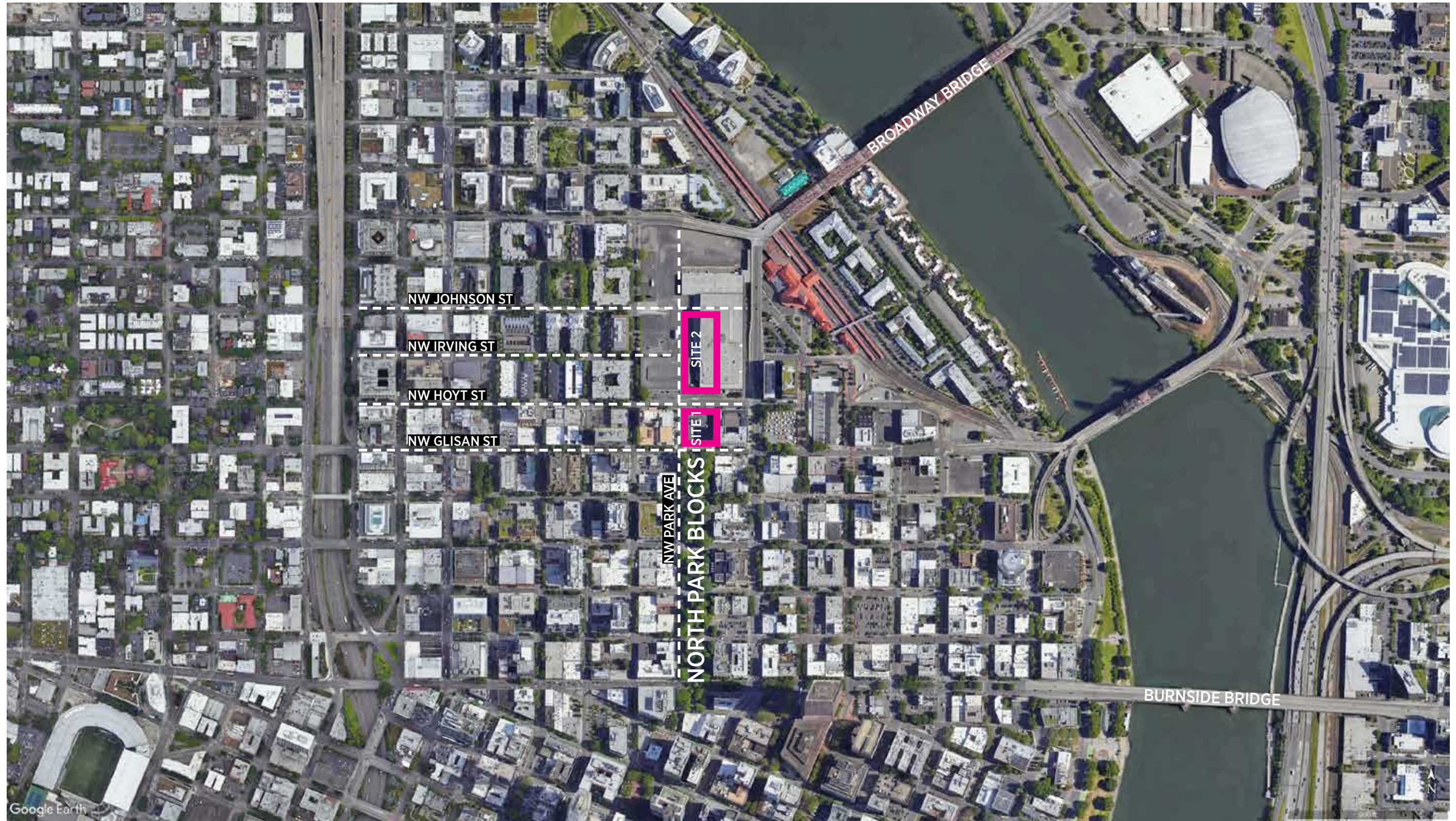


NORTH PARK BLOCKS EXTENSION

DESIGN COMMISSION

PROJECT OVERVIEW
COMMUNITY ENGAGEMENT
USPS MASTER PLAN
DESIGN

PROJECT LOCATION



SCHEDULE

BUDGET

Fall 2023 - Winter 2023

Project set-up
Contracting
Project advisory committee
recruitment

Winter 2023/24 - Winter 2024/25

Community engagement
Planning/concept design process

Spring 2025 - Summer 2026

Design development
Construction documents
Permitting and contracting

Fall 2026 - Summer 2027

Construction of Site 1 at PNCA

Fall 2027

Anticipated opening date

Site 1

Total allocation: \$8 M
Anticipate \$5-6 M for
construction

Site 2

Total allocation:
\$11.4 M PP&R
\$9.6 M PBOT

PROJECT GOALS

- Balance the park's importance to the neighborhood with its value as urban open space
- Link to existing park blocks with new, meaningful connections
- Confirm Broadway Corridor Master Plan ideas and supplement with current trends and community input
- Provide open recreation areas and areas for community gathering and events
- Exceed Urban Forestry requirements tree canopy for urban parks
- Use design principles that prioritize pedestrian safety and connectivity, carefully integrating the Green Loop into the park without compromising programming potential
- Create a high-quality design with a high degree of consideration for maintenance requirements

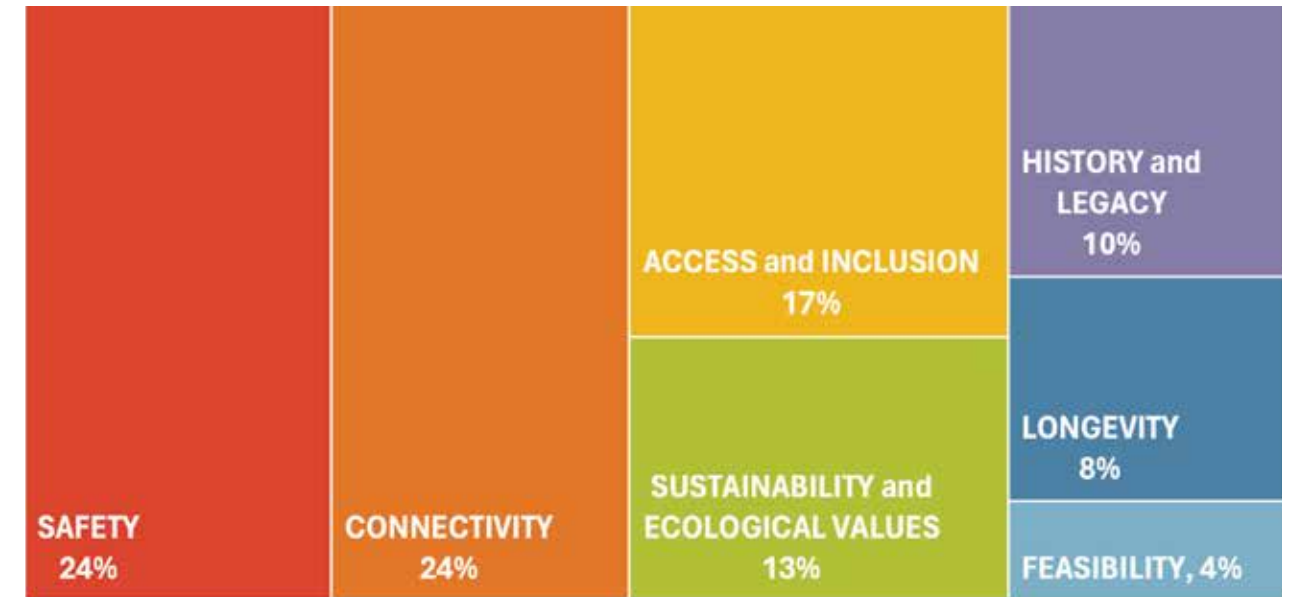
PROJECT OVERVIEW
COMMUNITY ENGAGEMENT
USPS MASTER PLAN
DESIGN

COMMUNITY ENGAGEMENT 1 SUMMARY

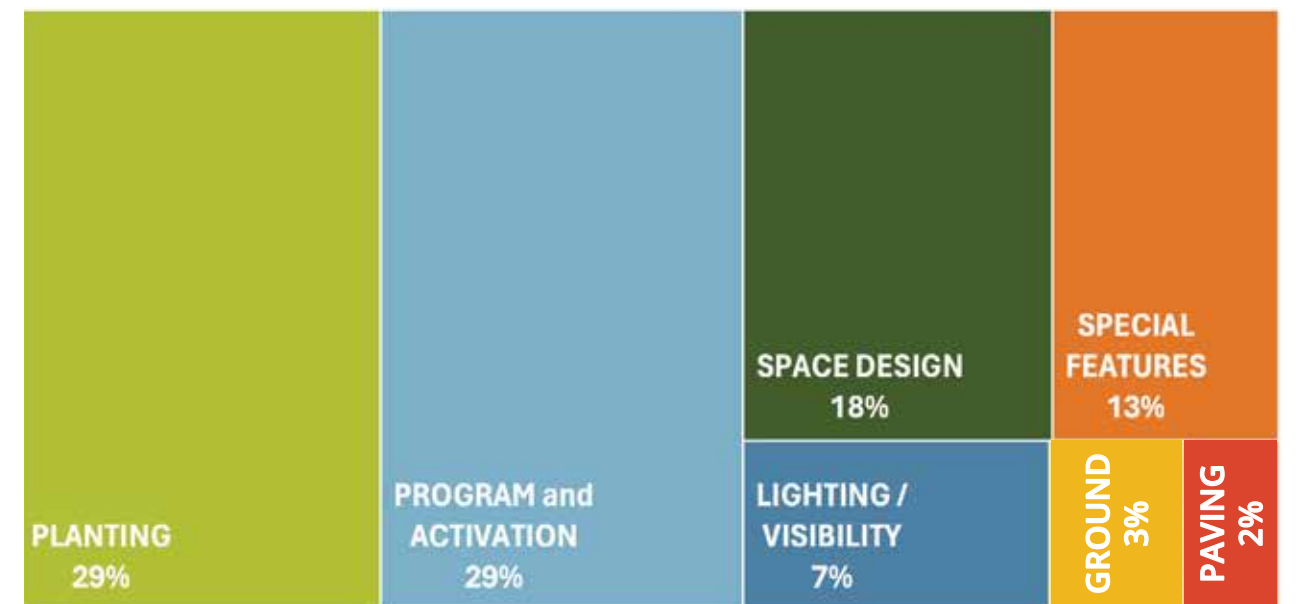
COMMUNITY PRIORITIES

ASPIRATION	RANKING AT OPEN HOUSE	RANKING PER ONLINE SURVEY*	TREND
ACCOUNTABLE	1	1	Identified as the most important value, this aspiration was interpreted as the need for maintenance and management for the site related to safety and control of homelessness and illegal use of drugs.
CONNECTED	2	3	Second top ranked, representing focus on reconnecting the city through this new open space.
EQUITABLE	3	4	Ranked very closely with connectivity, creating a space that ensures that access is available to all was identified as an important value. With this ranking, participants emphasized also the importance to permit access but to also ensure there is the appropriate management of homelessness and crime.
RESILIENT	6	2	Although ranked the lowest at the open house with the money “investing”, this value was identified as the second top ranking with the online responses. In average, we are thus considering this aspiration as the fourth priority for the community. The values associated with this aspiration center around creating a park that is possible to maintain and that lifts the neighborhood from the current ills of perceived neglect.
VIBRANT	4	6	Providing many activities/opportunities to create a vibrant space were identified with this aspiration as a positive approach to the site.
PROSPEROUS	5	5	This aspiration is considered relevant, but people expressed concern about focusing too much on commercial activities in the open space.

COMMUNITY CONCERNS



COMMUNITY WANTS



COMMUNITY ENGAGEMENT 2

TAKEAWAYS FOR DESIGN

The results of Community Engagement #2 helped the design team and the City confirm what community members would like to see in the future park, narrowing down the previously determined goals of safe, connected, green, and flexible into more concrete elements for design.

134 people submitted surveys in-person or online for Community Event 2 – Three Concepts



THE SAFEST PLACE

- Good, fun lighting
- Easy to keep clean and maintained
- Attractions to encourage visitors
- Easy to move through

THE CONNECTOR PARK

- Accessible circulation
- Prioritizing pedestrians
- Connected to surrounding areas
- Celebrating local culture and history

THE GREENEST PLACE

- Native planting
- Interaction with nature
- Trees to provide shade
- Green open space

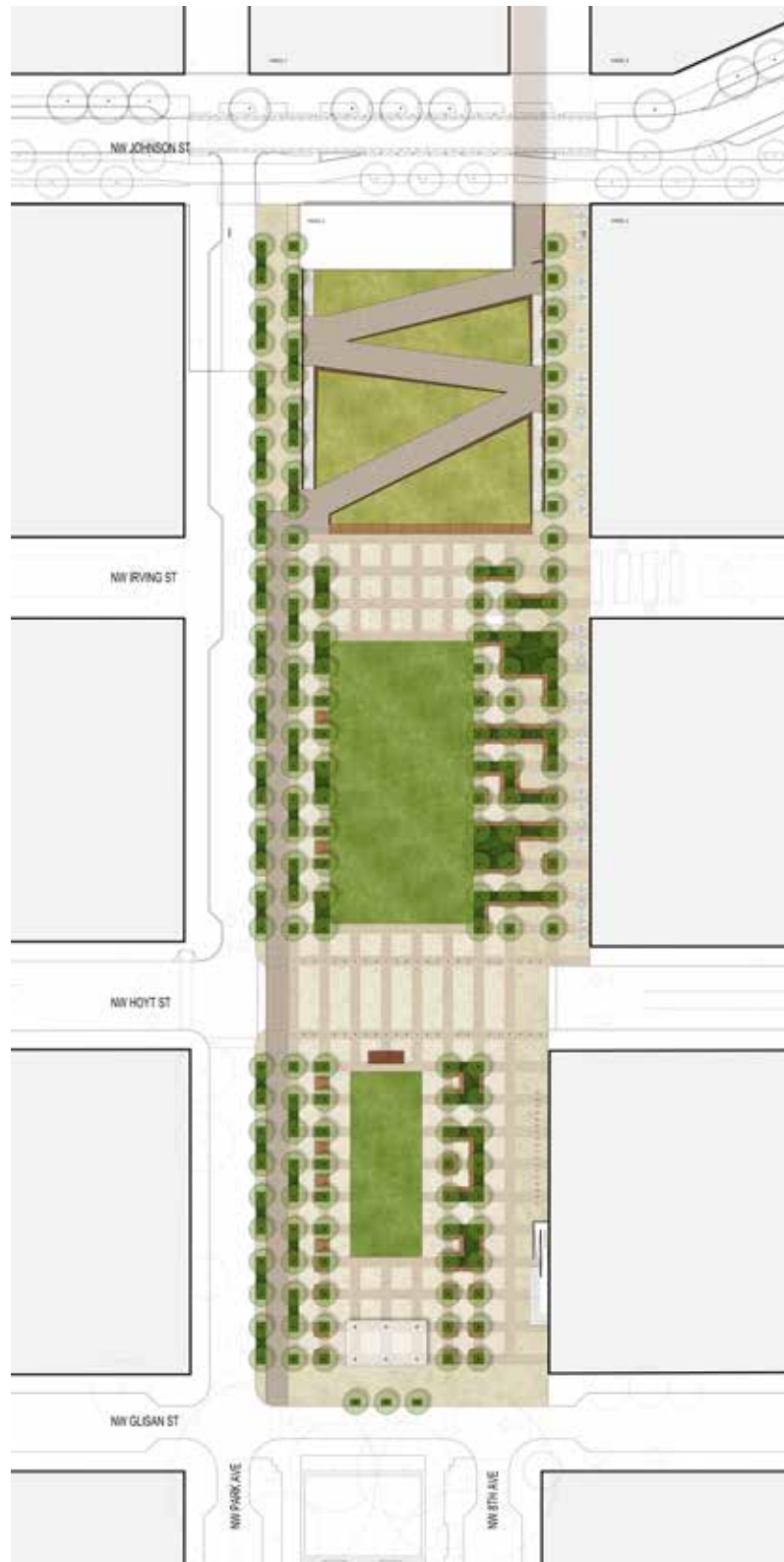
THE MOST FLEXIBLE DESTINATION

- Shade and rain cover
- Interactive art
- Support for a variety of events and activities
- Diverse and accessible seating

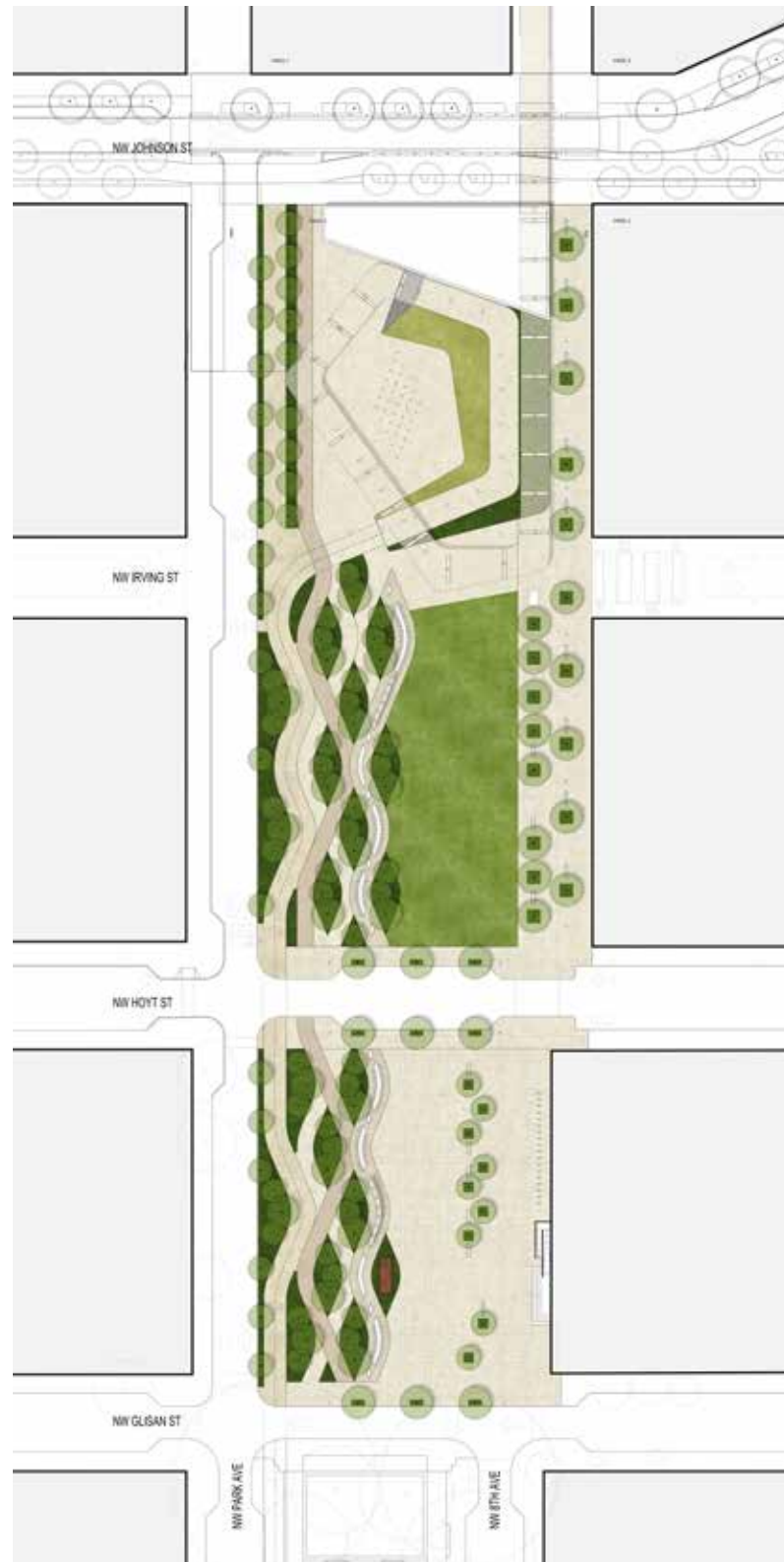


COMMUNITY ENGAGEMENT 2

A- QUILT



B- TABLE



C- CLEARING



PROJECT OVERVIEW
COMMUNITY ENGAGEMENT
USPS MASTER PLAN
DESIGN

USPS MASTER PLAN

OPEN AREAS

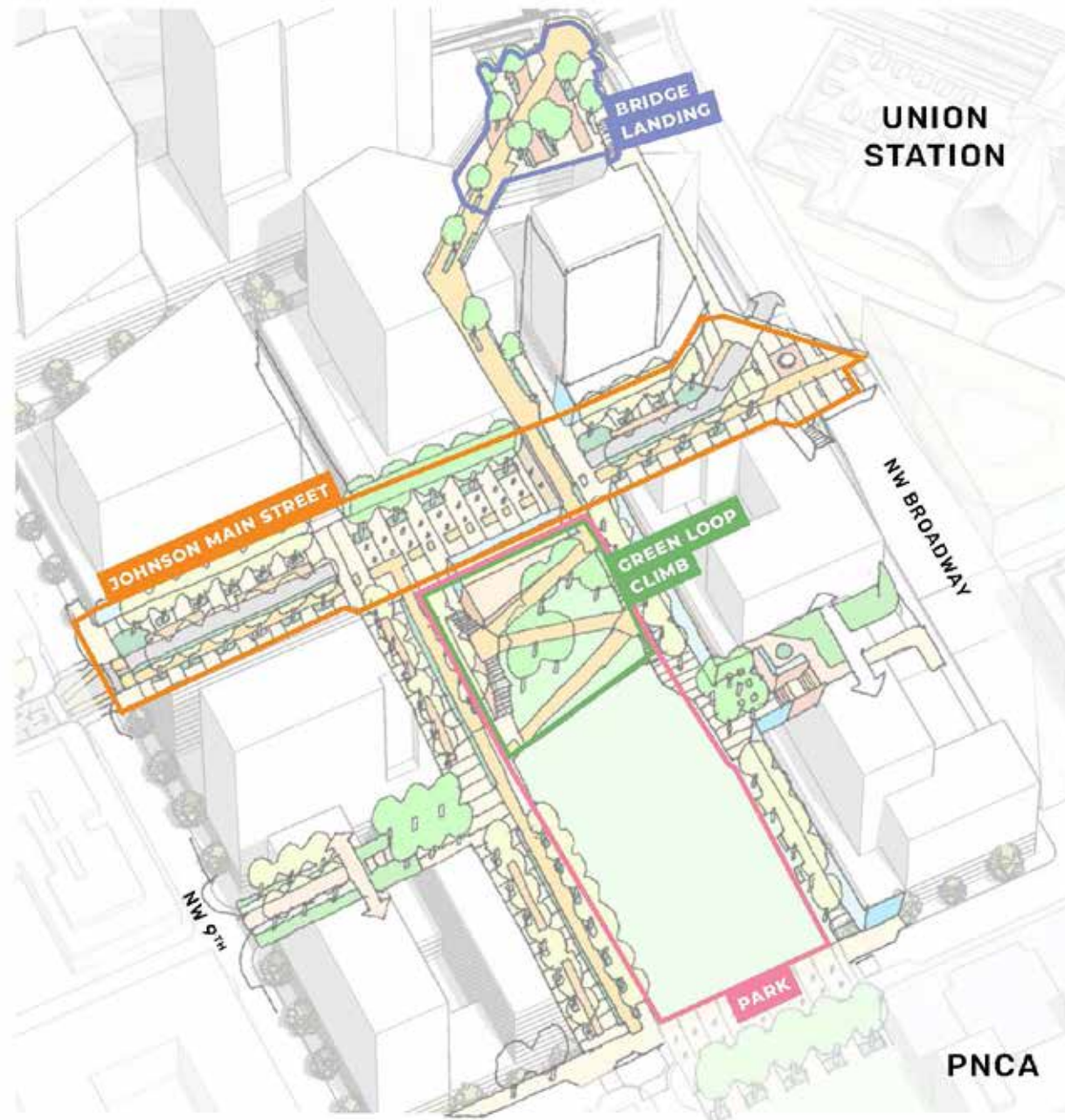


Figure 5.2
Public Realm Axon

SURROUNDING CONTEXT

- Street network and open spaces provide accessible connections
- Open space sequence anchored by a two-block extension and iconic termination of the North Park Blocks
- Bridges and elevated paths provide views
- New public streets connect formerly separated neighborhoods
- Johnson and Kearney prioritize pedestrians and bicyclists

CONNECTED OPEN SPACE

- Largest central park gathering space suitable for active and passive recreation and community events
- Green Loop links the park at the south to the Broadway Bridge
- Green Loop ramp will be integrated with landscape and an active retail facility
- Smaller open spaces add connectivity to the most active areas

PARK

- Large flexible open space
- Accommodate wide range of community members and groups
- Uses will be managed to ensure consistent and inclusive activation
- Integrate Green Loop along western edge
- Green Loop climb will connect the Green Loop but also provide elevated open space with views of the North Park Blocks

PROJECT OVERVIEW
COMMUNITY ENGAGEMENT
USPS MASTER PLAN
DESIGN



THE ASCENT

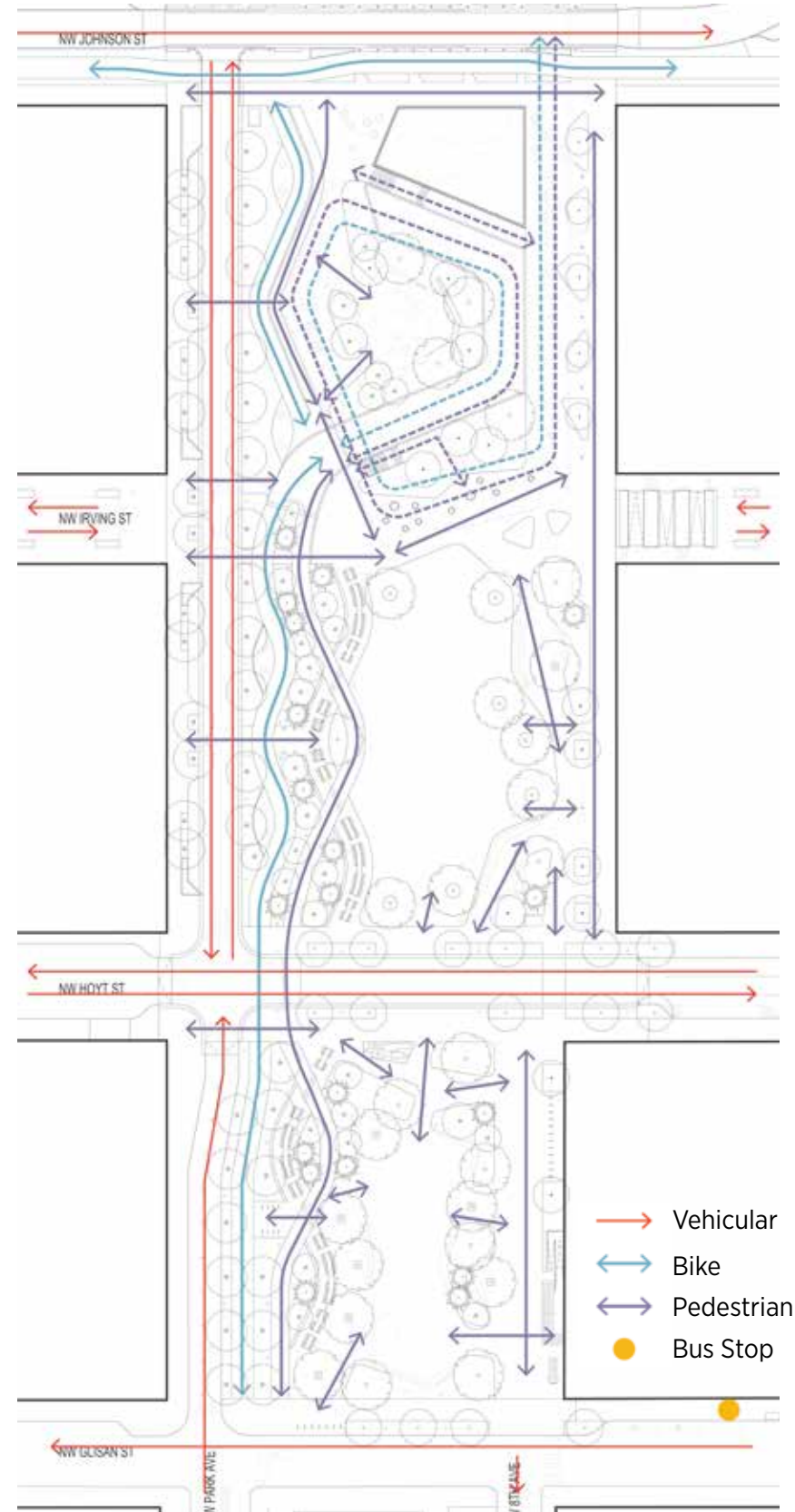
THE LAWN

THE PLAZA

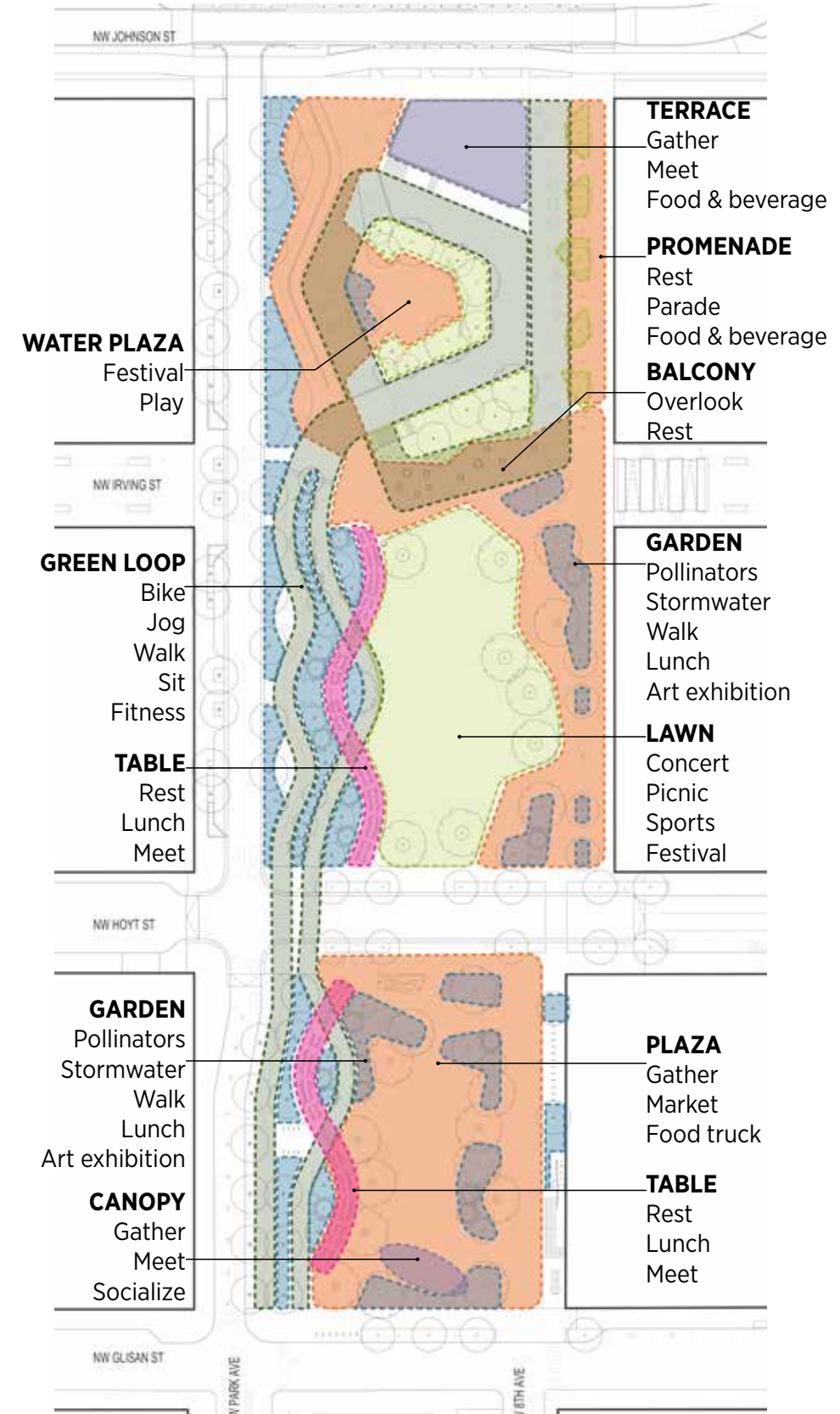
KEY ELEMENTS & FEATURES

- A distinct character for each block
- Enhanced relationship between Site 1 and Site 2
- Park Goals: be safe, flexible, connected, and green
- The braided area on the west creates a dynamic edge / spine
- The table ribbon as a symbol of community coming together
- Diversity of scales for seating, gathering, moving
- A more open and playful ascent towards Broadway Bridge
- Integration of the Green Loop into the park

CIRCULATION



PROGRAM



SITE 1 - THE PLAZA



SITE 1 - THE PLAZA



SITE 1 - THE PLAZA



SITE 1 - THE PLAZA



SITE 2 SOUTH - THE LAWN



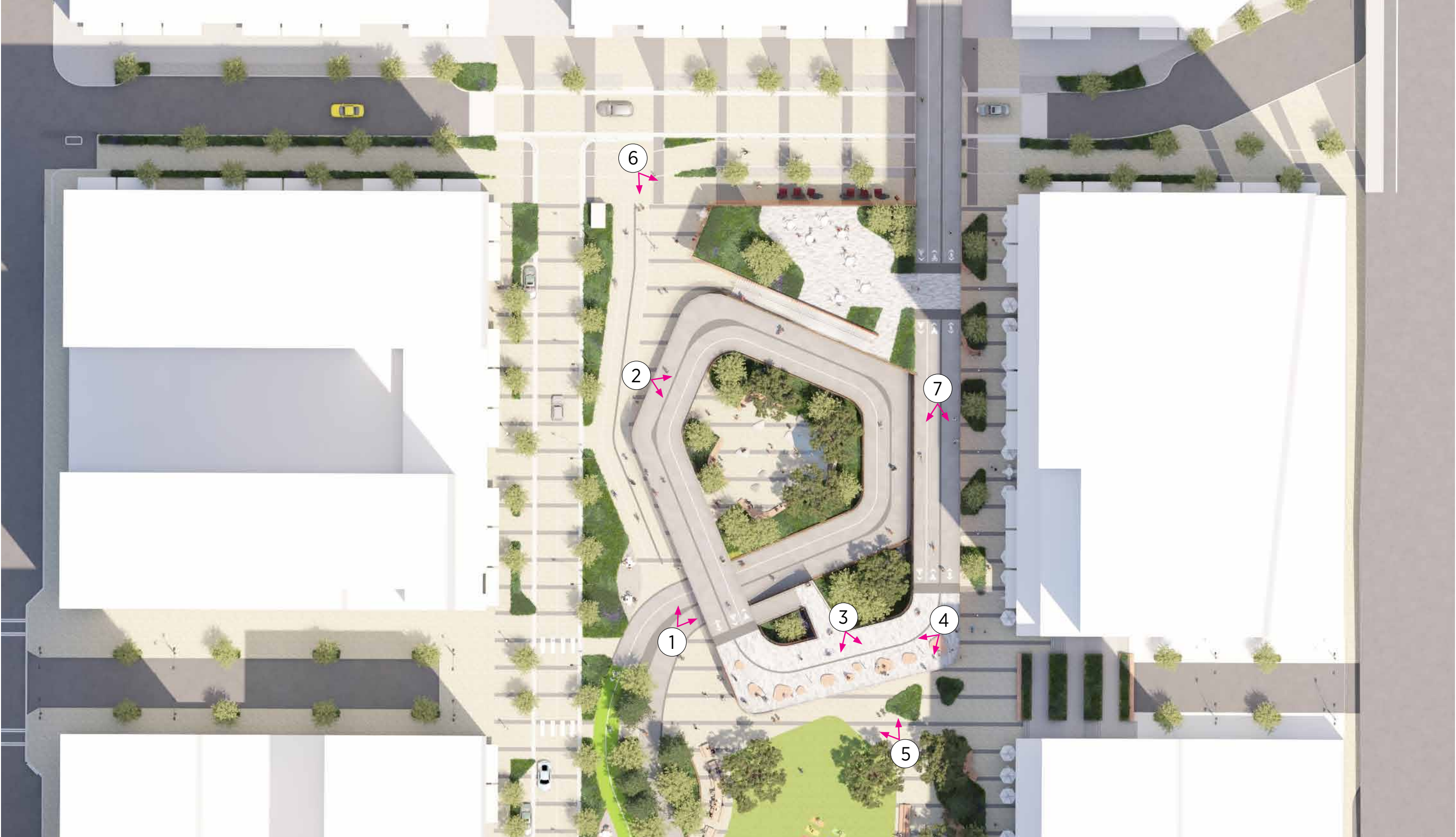
SITE 2 SOUTH - THE LAWN



SITE 2 SOUTH - THE LAWN



SITE 2 NORTH - THE ASCENT



SITE 2 NORTH - THE ASCENT



SITE 2 NORTH - THE ASCENT



SITE 2 NORTH - THE ASCENT



SITE 2 NORTH - THE ASCENT



SITE 2 NORTH - THE ASCENT



SITE 2 NORTH - THE ASCENT



SITE 2 NORTH - THE ASCENT



SITE 2 NORTH - BUILDING

GROUND LEVEL PLAN



UPPER LEVEL PLAN



DISCUSSION

