

Vacate a portion of NE Alameda St and NE 58th Ave subject to certain conditions and reservations (Hearing; Ordinance, VAC-10138)



Street Vacation Process

October 16, 2024 - Regular Agenda Item #879



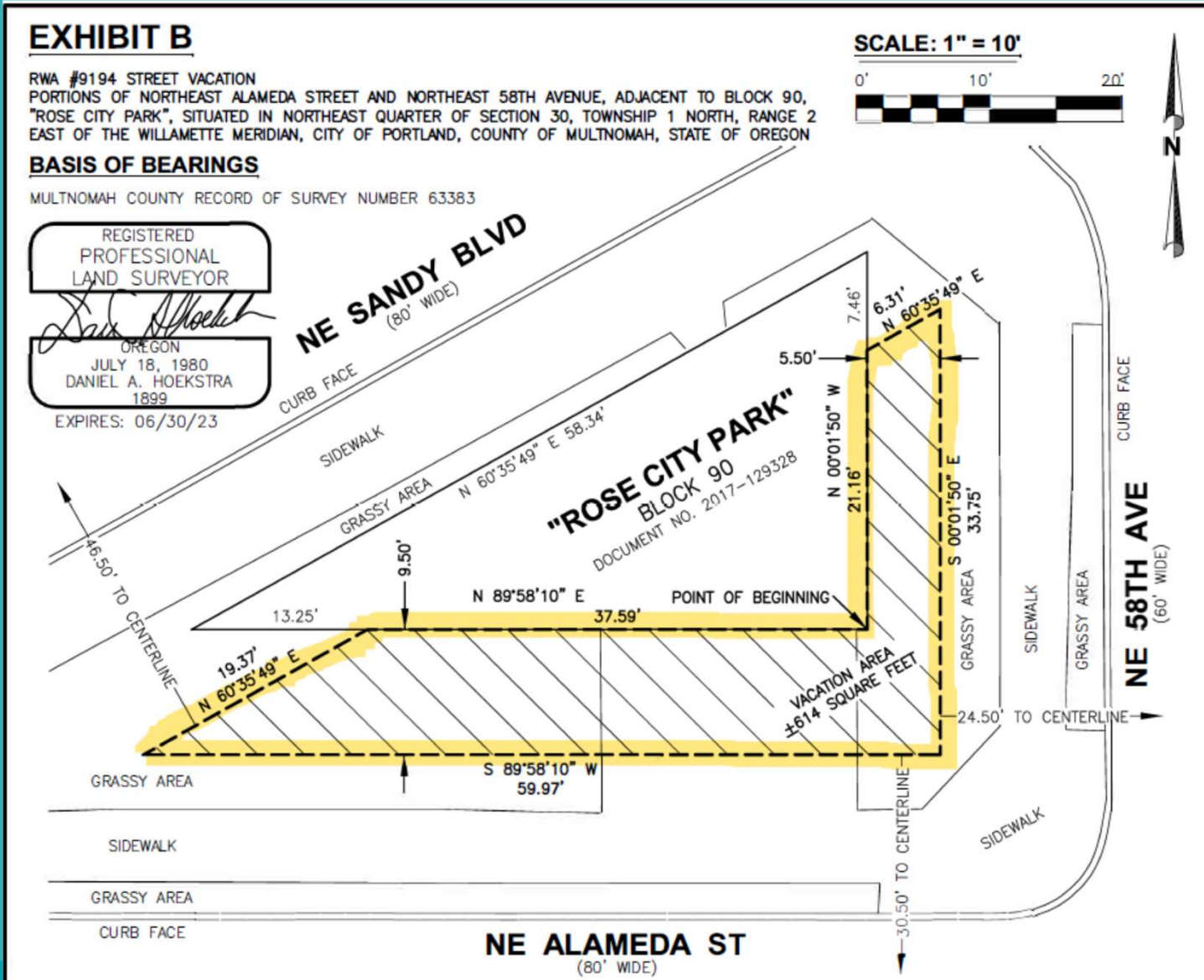
PBOT
PORTLAND BUREAU OF TRANSPORTATION

Staff presenting: Kevin Balak, Supervisor, Real Property Services

Recent Aerial Photo of Site



Street Area to be Vacated



Current Conditions

- Residential and commercial neighborhood with CM2 (Commercial Mixed Use 2) and R5 (Residential 5,000) zoning.
- This area is within the NE Sandy Blvd business corridor and Rose City Park neighborhood.



Approval Condition

PBOT Development Review

Sufficient public right-of-way will be retained on NE Alameda Street and NE 58th Avenue to provide an overall 11-foot-wide sidewalk corridor as measured from face of existing curb.

NE Alameda St facing west



NE 58th Ave facing north



