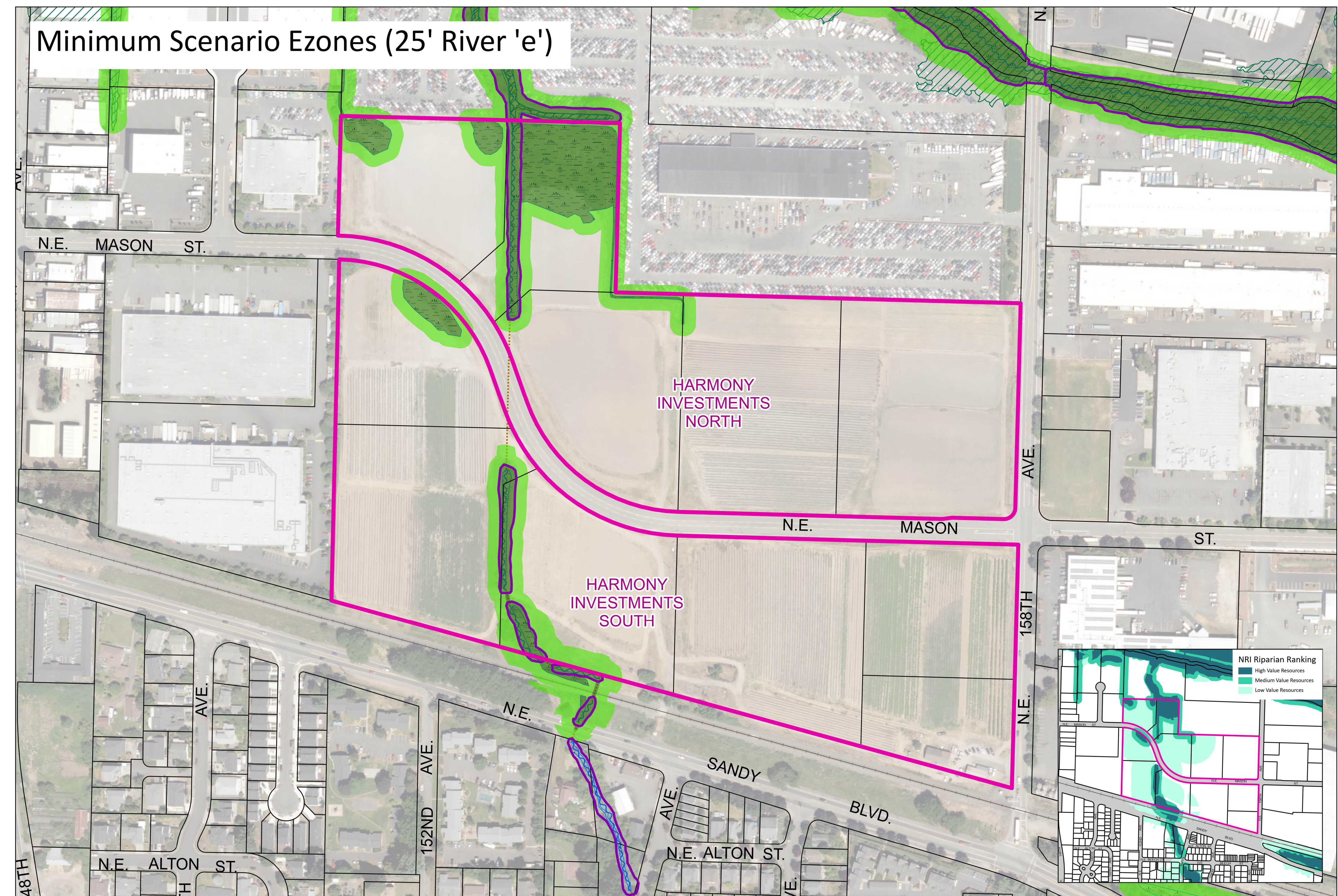
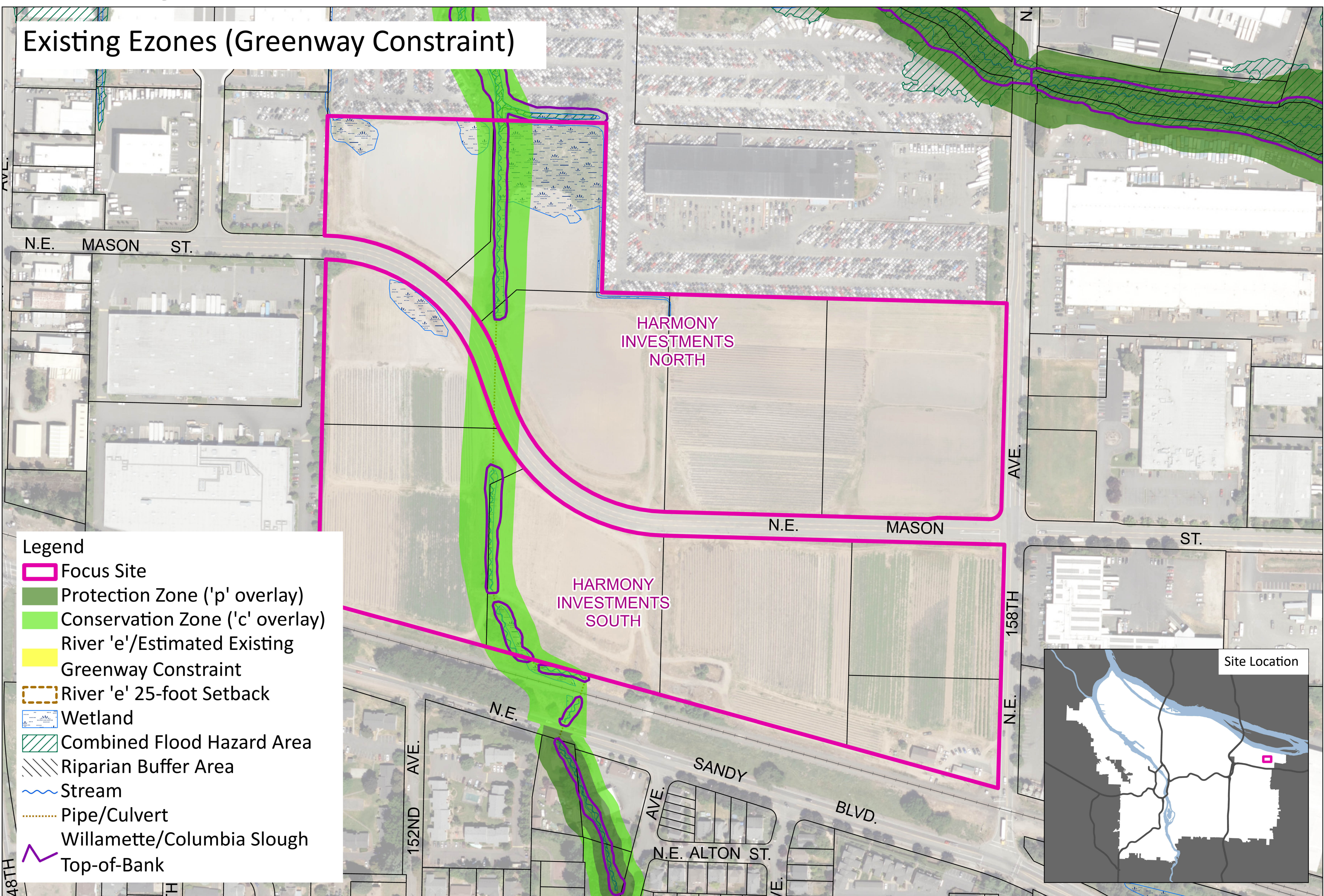
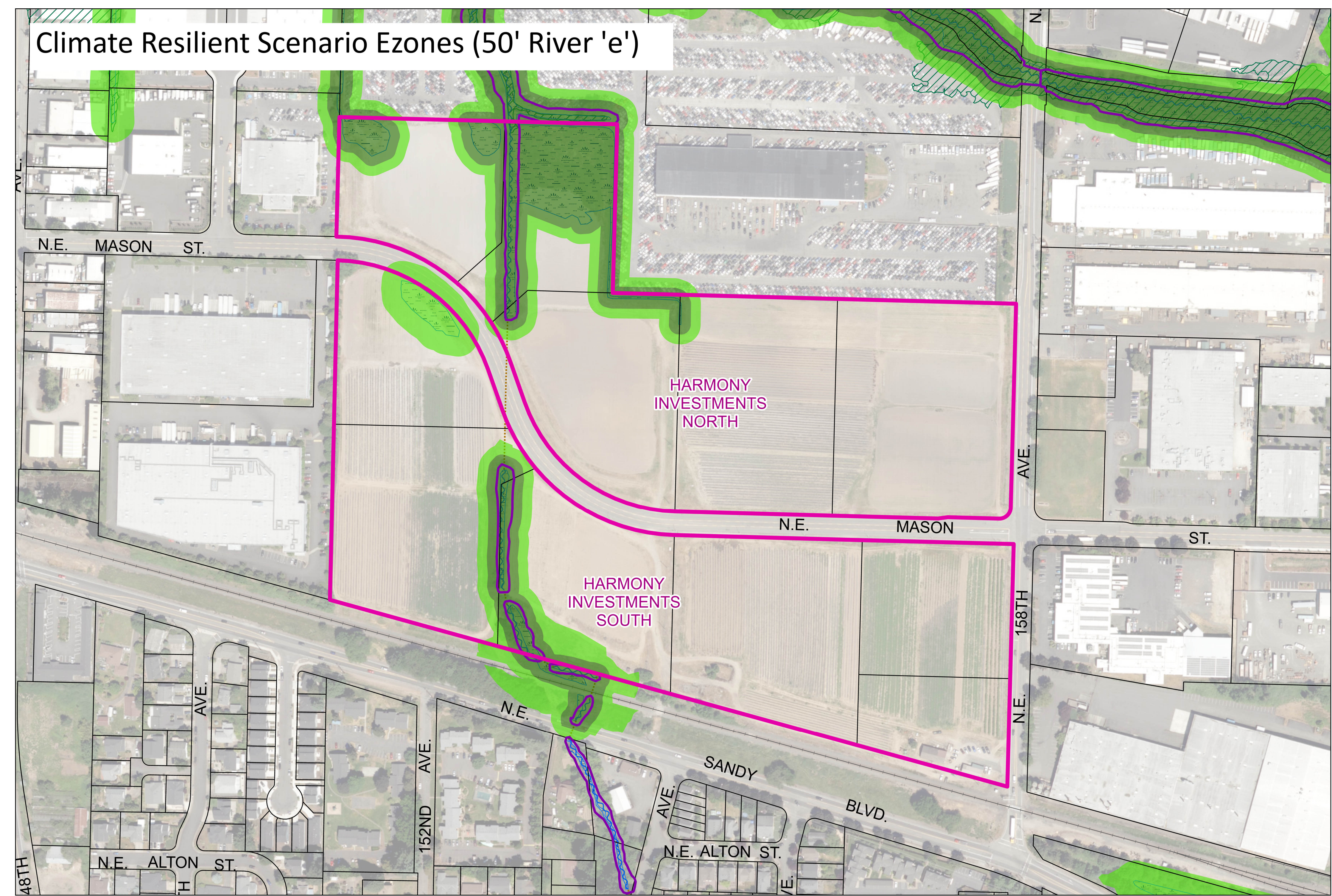
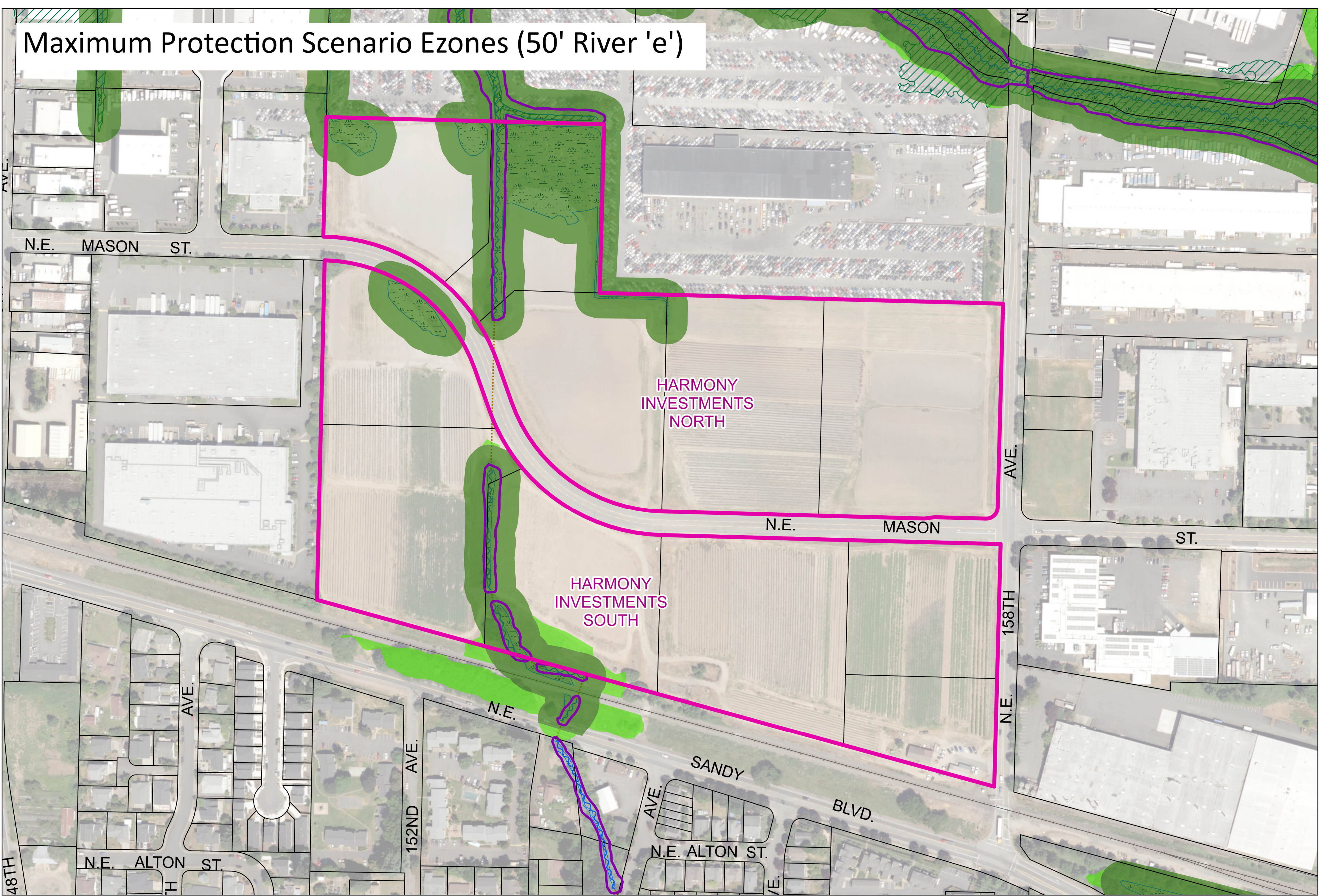


# Harmony Investments - Wilkes Creek

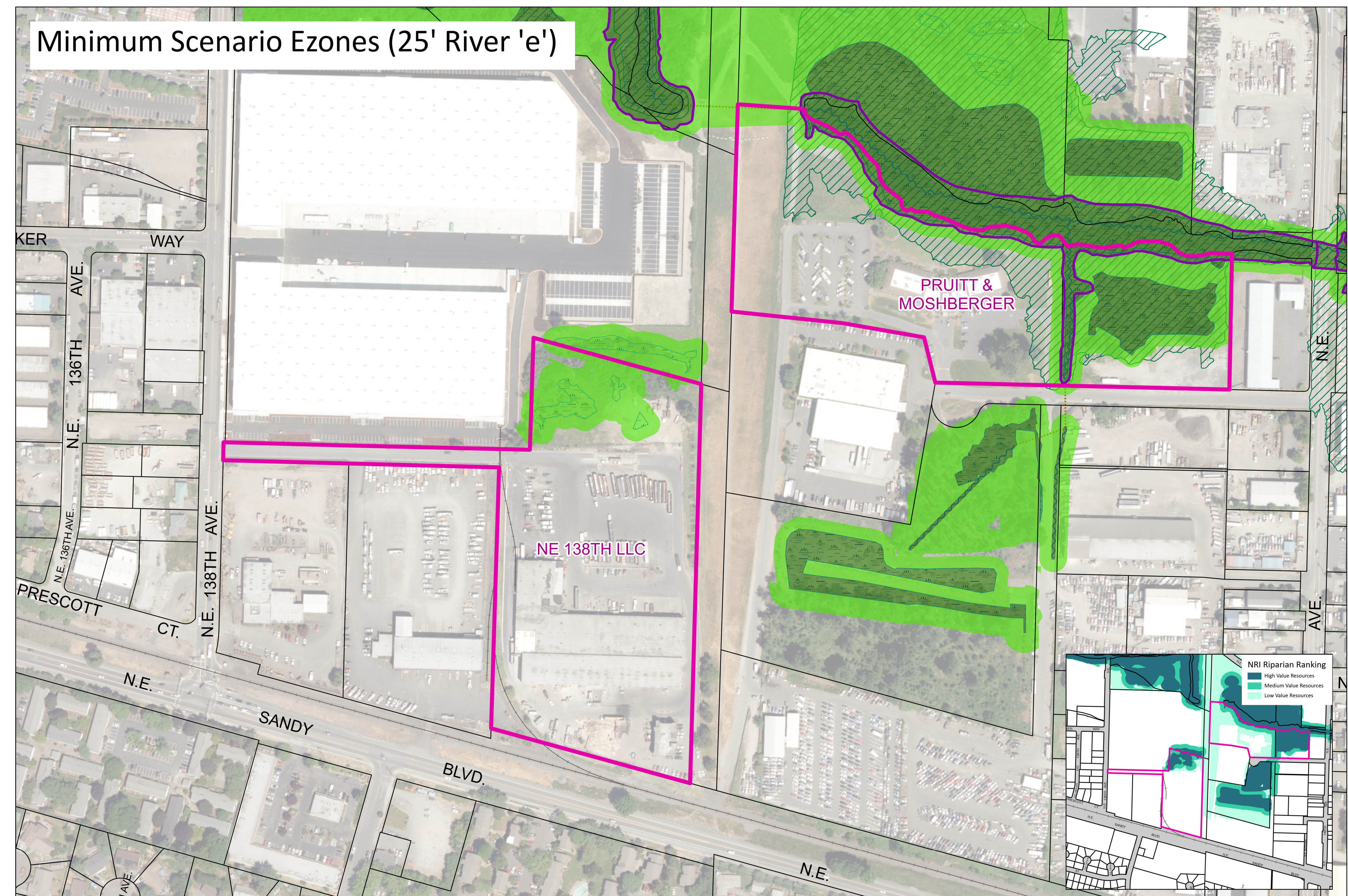
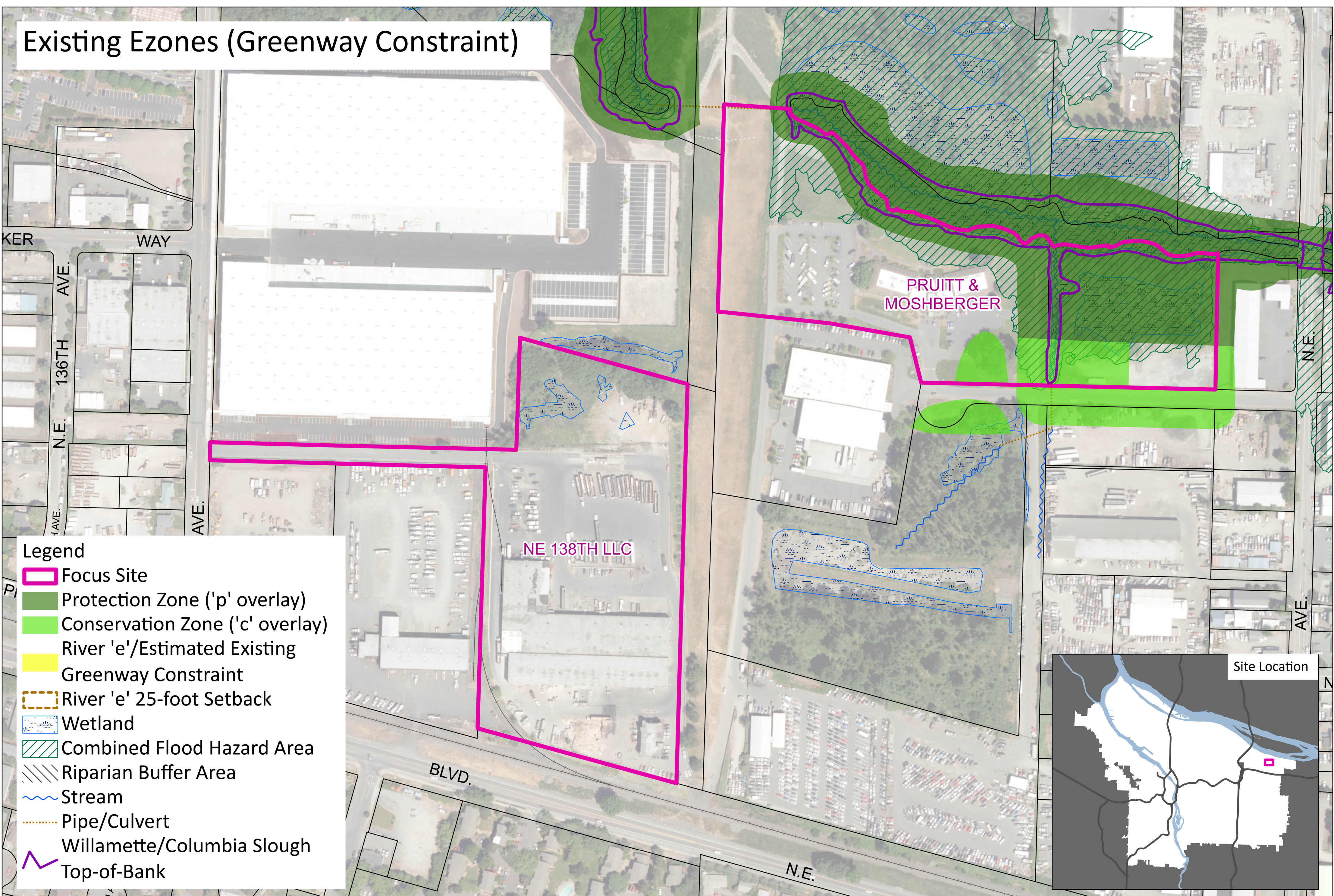


Owner	Base Zone	Site Address	Site Acreage	Existing Pzone	Existing (Pzone + Czone)	Minimum Pzone	Minimum (Pzone + Czone)	Climate Resilient Pzone	Climate Resilient (Pzone + Czone)	Maximum Protection Pzone	Maximum Protection (Pzone + Czone)	Greenway	River 'e' 25 ft	River 'e' 50 ft	Other Constraints
HARMONY INVESTMENTS NORTH	IG2	NE MASON ST	21.7	0%	9%	9%	16%	15%	20%	20%	20%	0%	0%	0%	Airport Height, Noise
HARMONY INVESTMENTS SOUTH	IG2	NE MASON ST	22.5	0%	9%	3%	8%	5%	12%	11%	12%	0%	0%	0%	Airport Height, Noise, ECST, LUJST

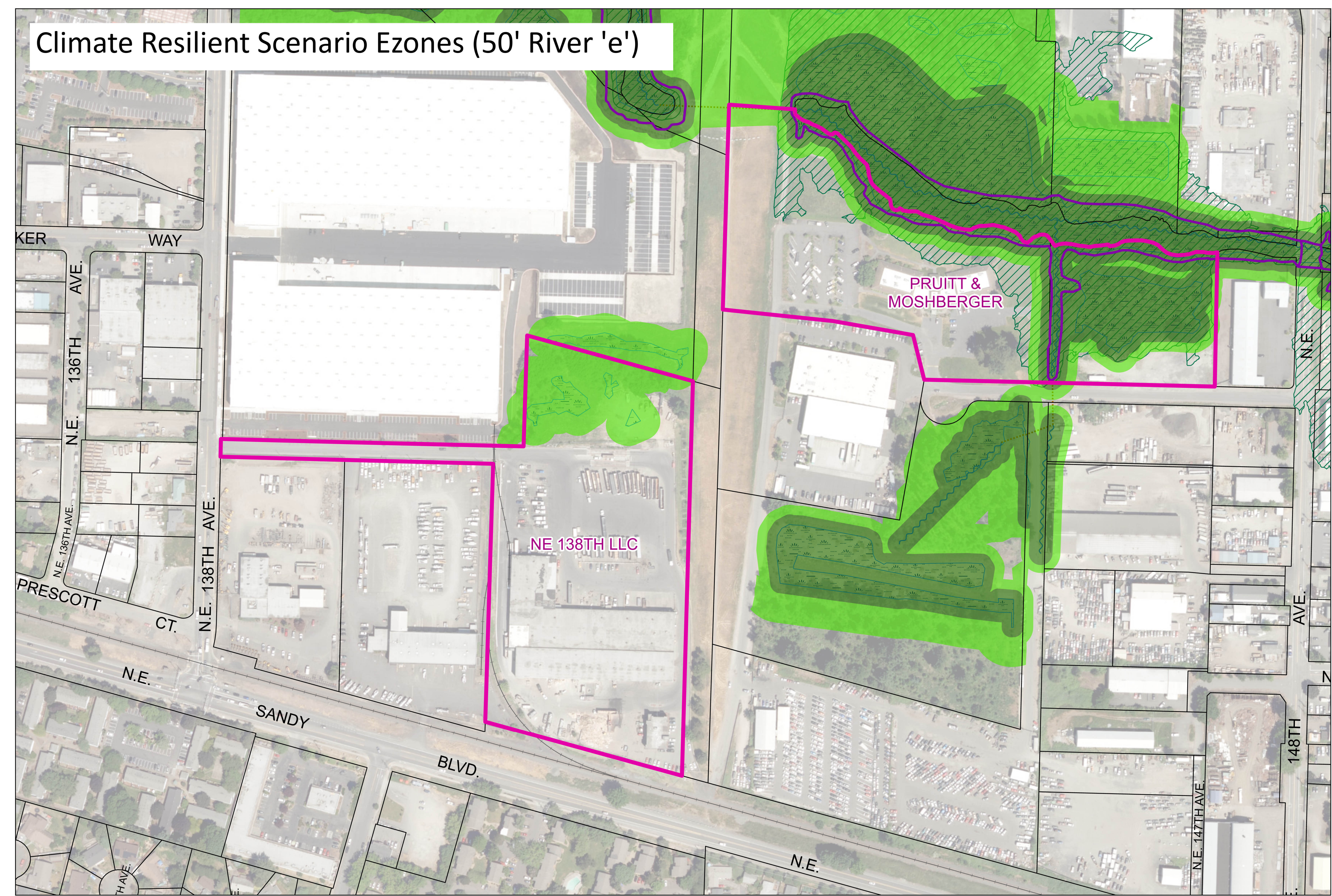
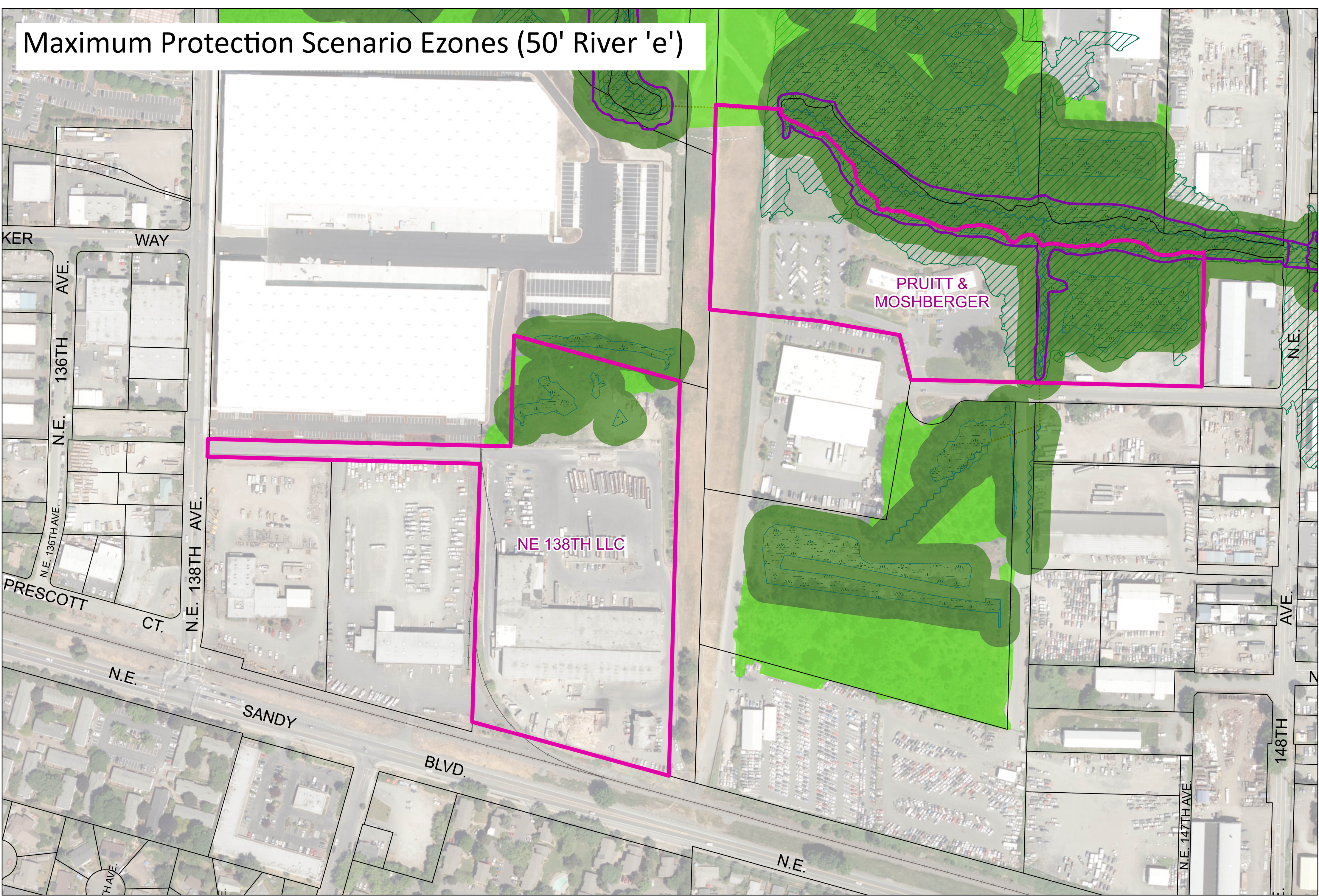


8/7/2024  
 City of Portland, Oregon // Bureau of Planning & Sustainability // Geographic Information System  
 The information on this map was derived from City of Portland GIS databases. Care was taken in the creation of this map but it is provided "as is". The City of Portland cannot accept any responsibility for error, omissions or positional accuracy.  
 The City of Portland ensures meaningful access to city programs, services, and activities to comply with Civil Rights Title VI and ADA Title II laws and reasonably provides: translation, interpretation, modifications, accommodations, alternative formats, auxiliary aids and services. To request these services, contact 503-823-7700, City TTY 503-823-6868, Relay Service: 711.  
 S:\GIS\Projects\Economic\_Opportunities\_Analysis\Maps\CWG\_site\_maps\_Aug2024\CWG\_Site\_maps\_240718.aprx

# NE 138th/Pruitt & Moshberger



Owner	Base Zone	Site Address	Site Acreage	Existing Pzone	Existing (Pzone + Czone)	Minimum Pzone	Minimum (Pzone + Czone)	Climate Resilient Pzone	Climate Resilient (Pzone + Czone)	Maximum Protection Pzone	Maximum Protection (Pzone + Czone)	Greenway	River 'e' 25 ft	River 'e' 50 ft	Other Constraints
NE 138TH LLC	IG2	4530 NE 138TH AVE	11.7	0%	0%	0%	11%	0%	15%	13%	15%	0%	0%	0%	Airport Height, Noise, ESCI, LSHA, Sewer
PRUITT & MOSHBERGER	IG2	14333 NE WHITAKER WAY	11.5	33%	42%	16%	35%	30%	41%	40%	41%	0%	0%	0%	Airport Height, Noise, CFHA, Water, View, TransSub



8/7/2024

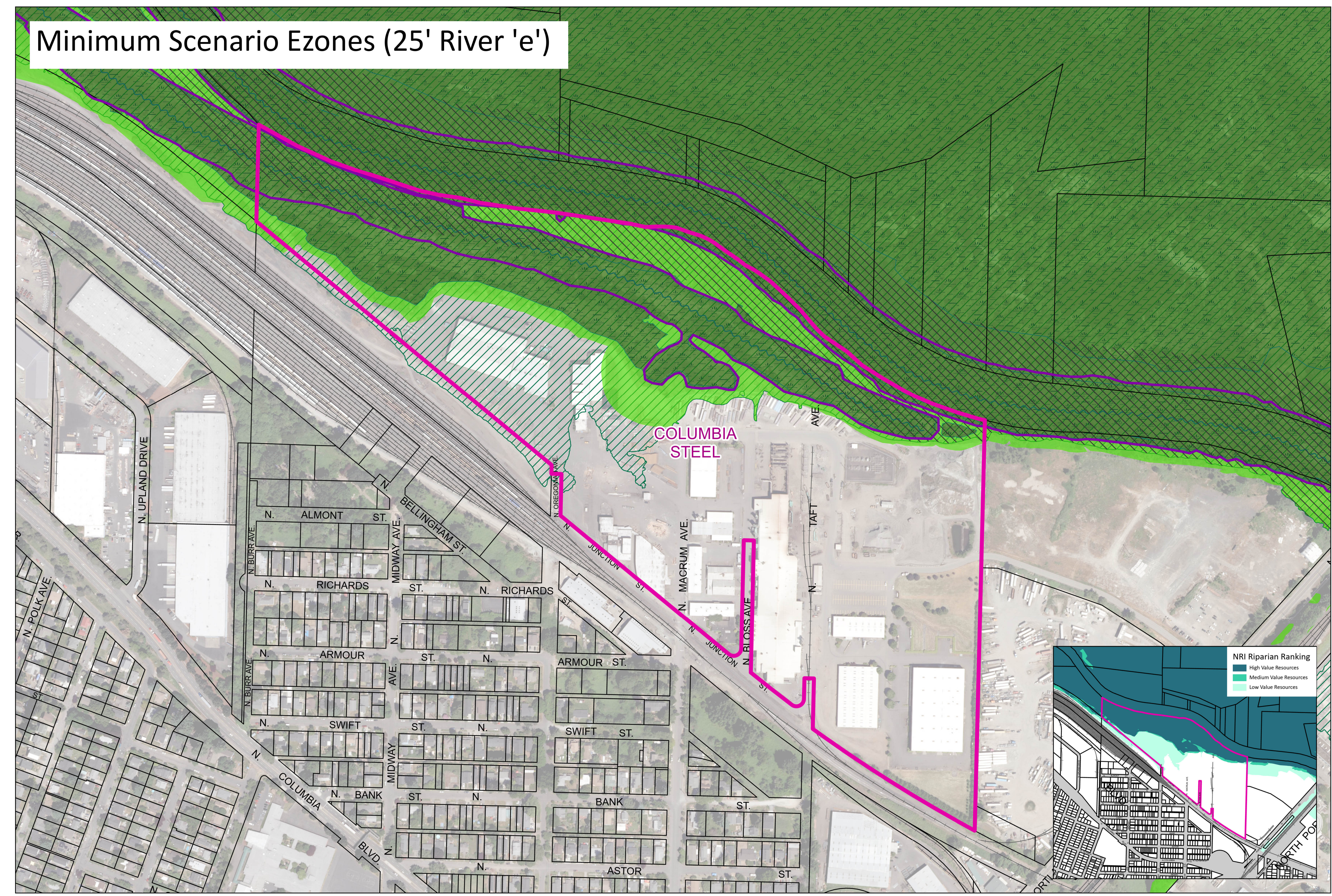
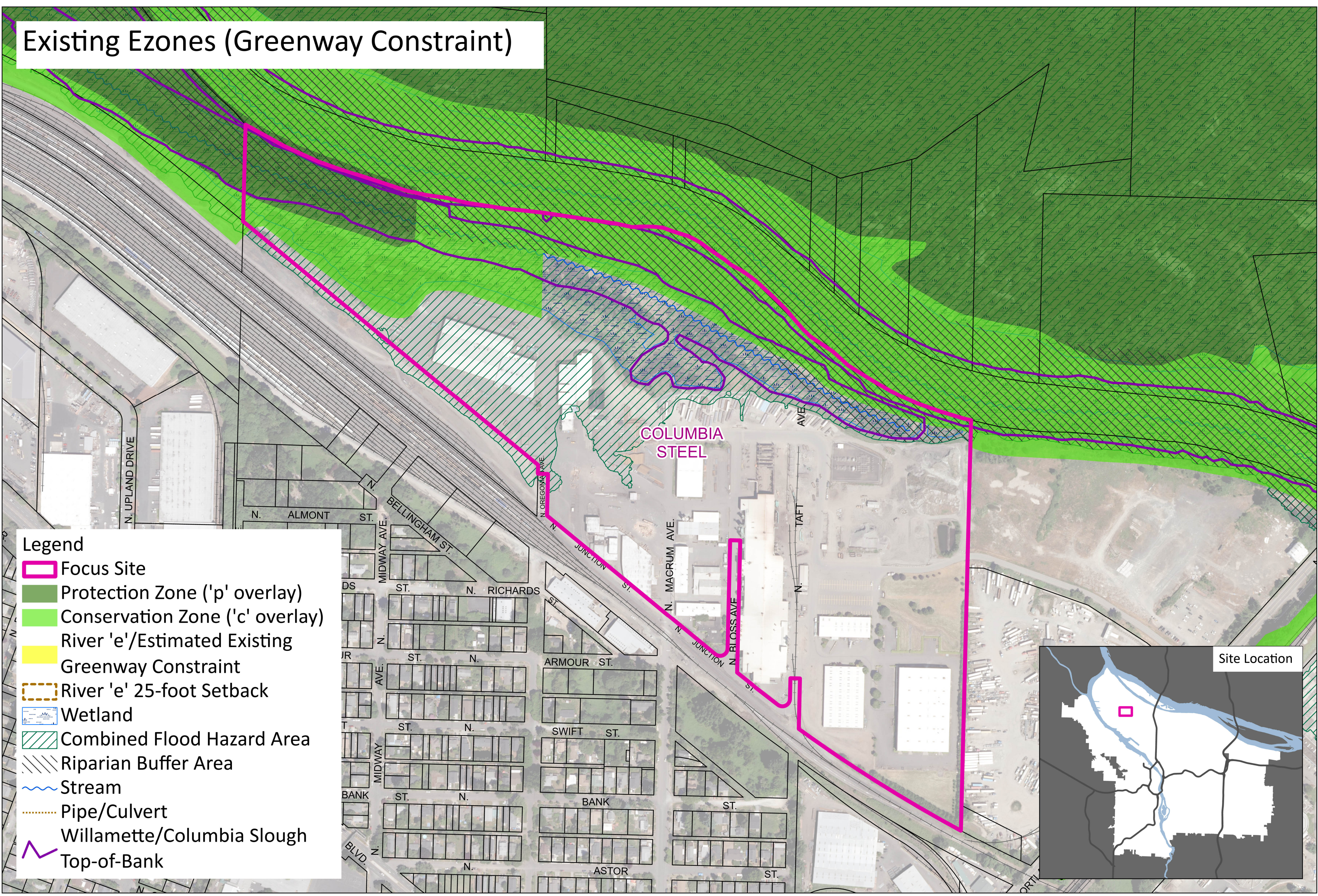
City of Portland, Oregon // Bureau of Planning & Sustainability // Geographic Information System

The information on this map was derived from City of Portland GIS databases. Care was taken in the creation of this map but it is provided "as is". The City of Portland cannot accept any responsibility for error, omissions or positional accuracy. The City of Portland ensures meaningful access to city programs, services, and activities to comply with Civil Rights Title VI and ADA Title II laws and reasonably provides: translation, interpretation, modifications, accommodations, alternative formats, auxiliary aids and services. To request these services, contact 503-823-7700, City TTY 503-823-6868, Relay Service: 711.

S:\GIS\Projects\Economic\_Opportunities\Maps\CWG\_site\_maps\_Aug2024\CWG\_Site\_maps\_240718.aprx



# Columbia Steel



Owner	Base Zone	Site Address	Site Acreage	Existing Pzone	Existing (Pzone + Czone)	Minimum Pzone	Minimum (Pzone + Czone)	Climate Resilient Pzone	Climate Resilient (Pzone + Czone)	Maximum Protection Pzone	Maximum Protection (Pzone + Czone)	Greenway	River 'e' 25 ft	River 'e' 50 ft	Other Constraints
COLUMBIA STEEL	IG2	10425 N BLOSS AVE	75.8	5%	24%	25%	38%	32%	39%	36%	39%	0%	0%	0%	ECSI, LUST, CFHA, HHA, LSHA

