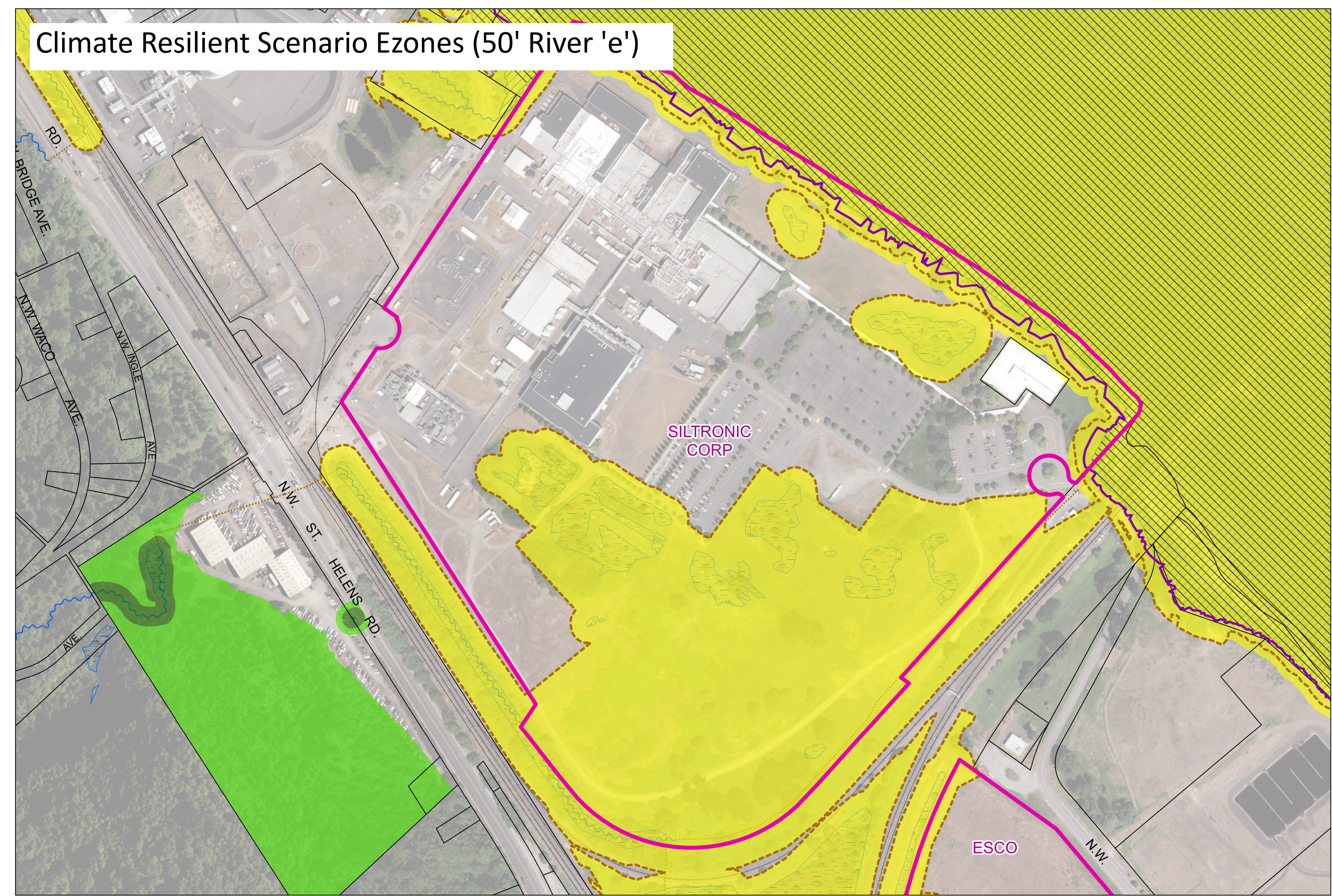
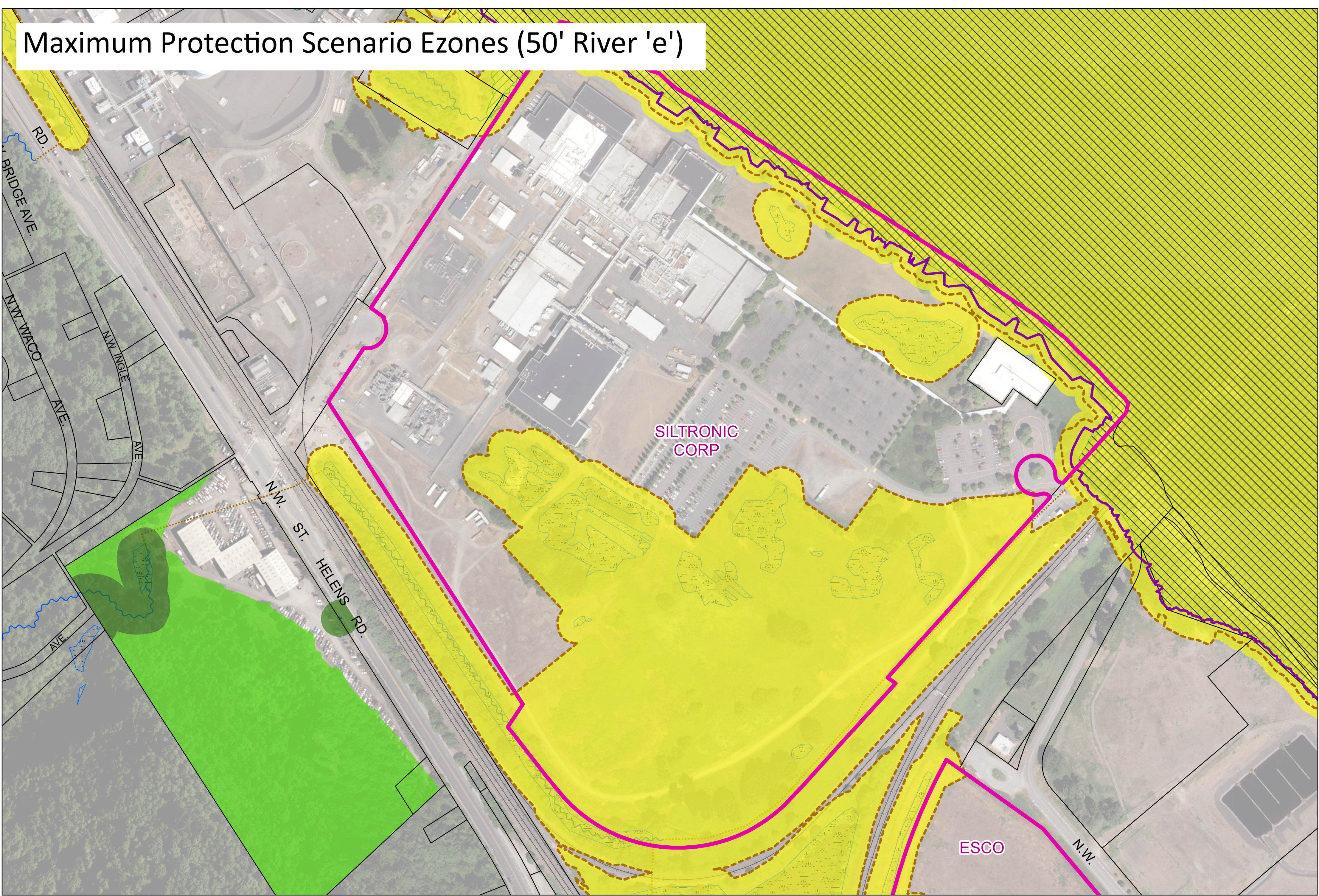
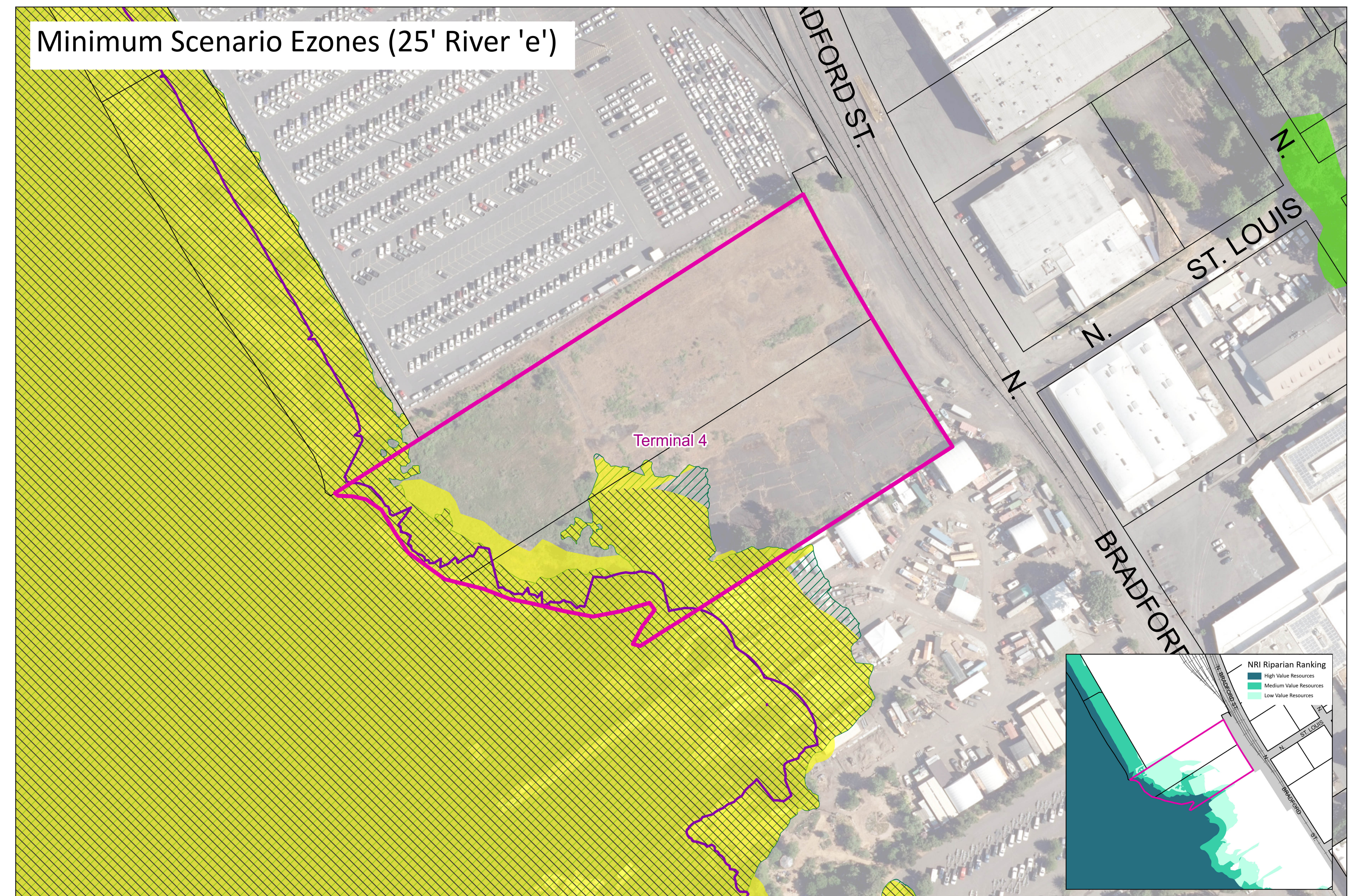
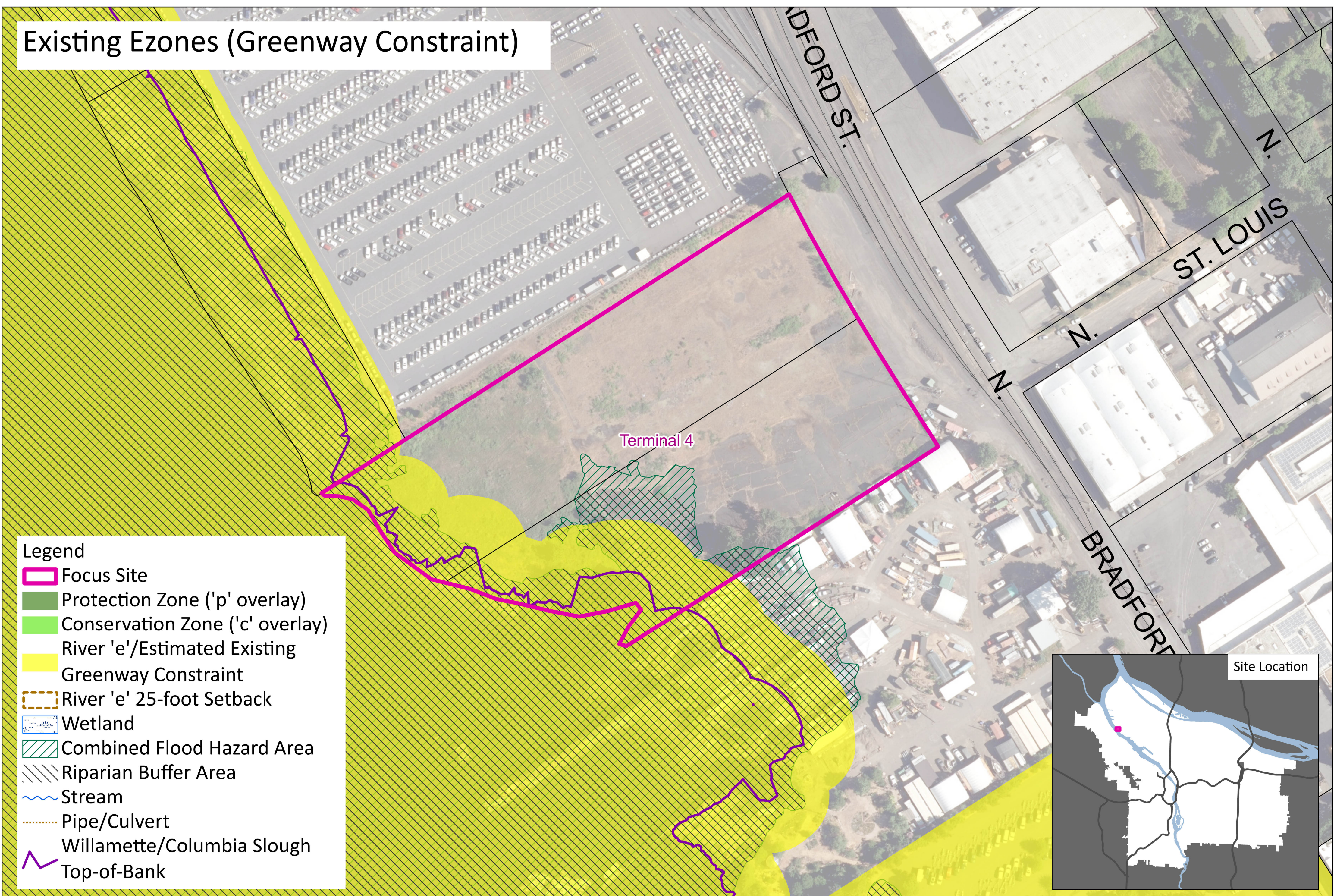


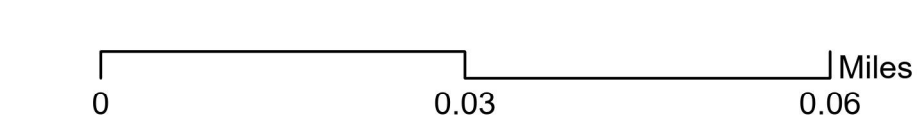
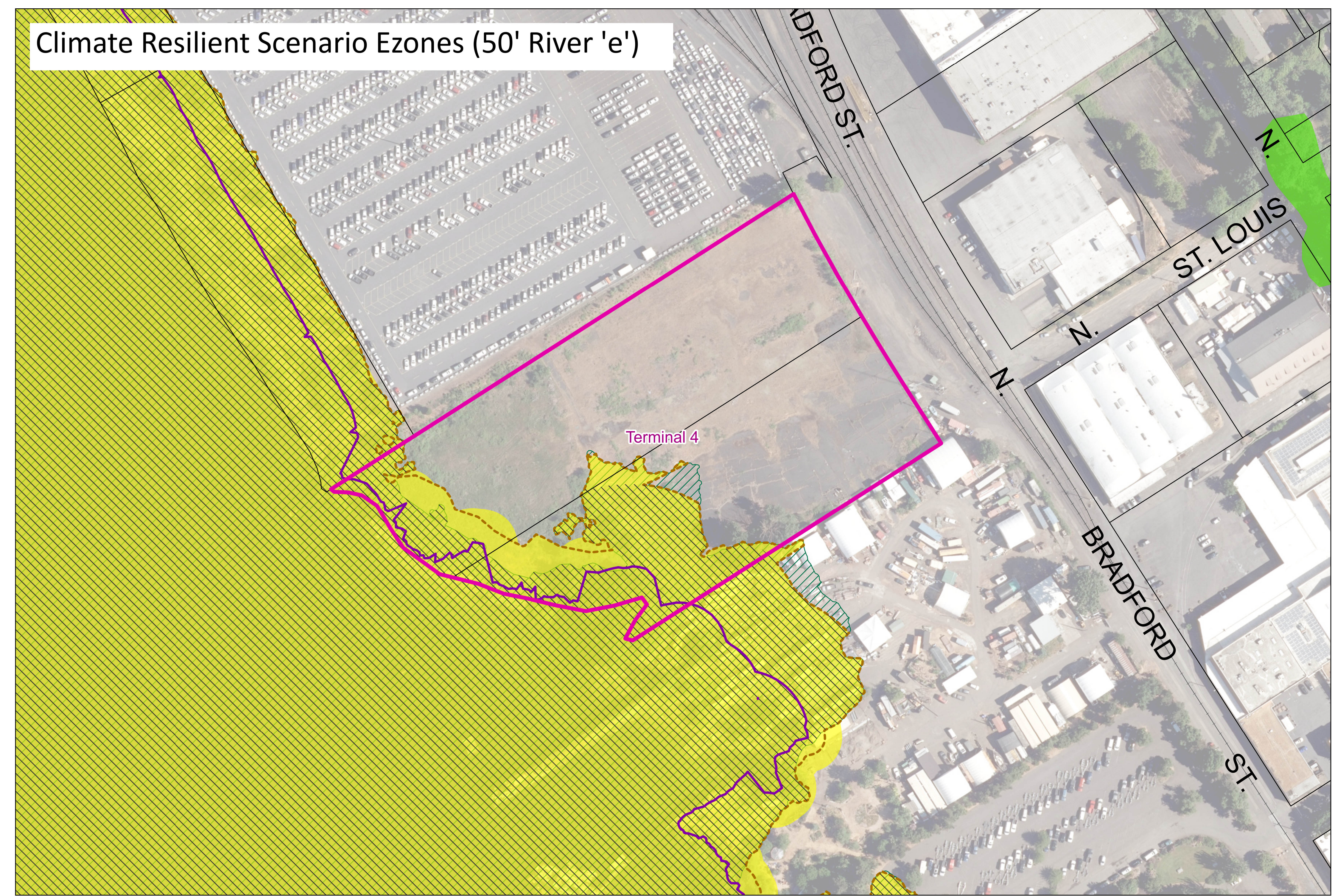
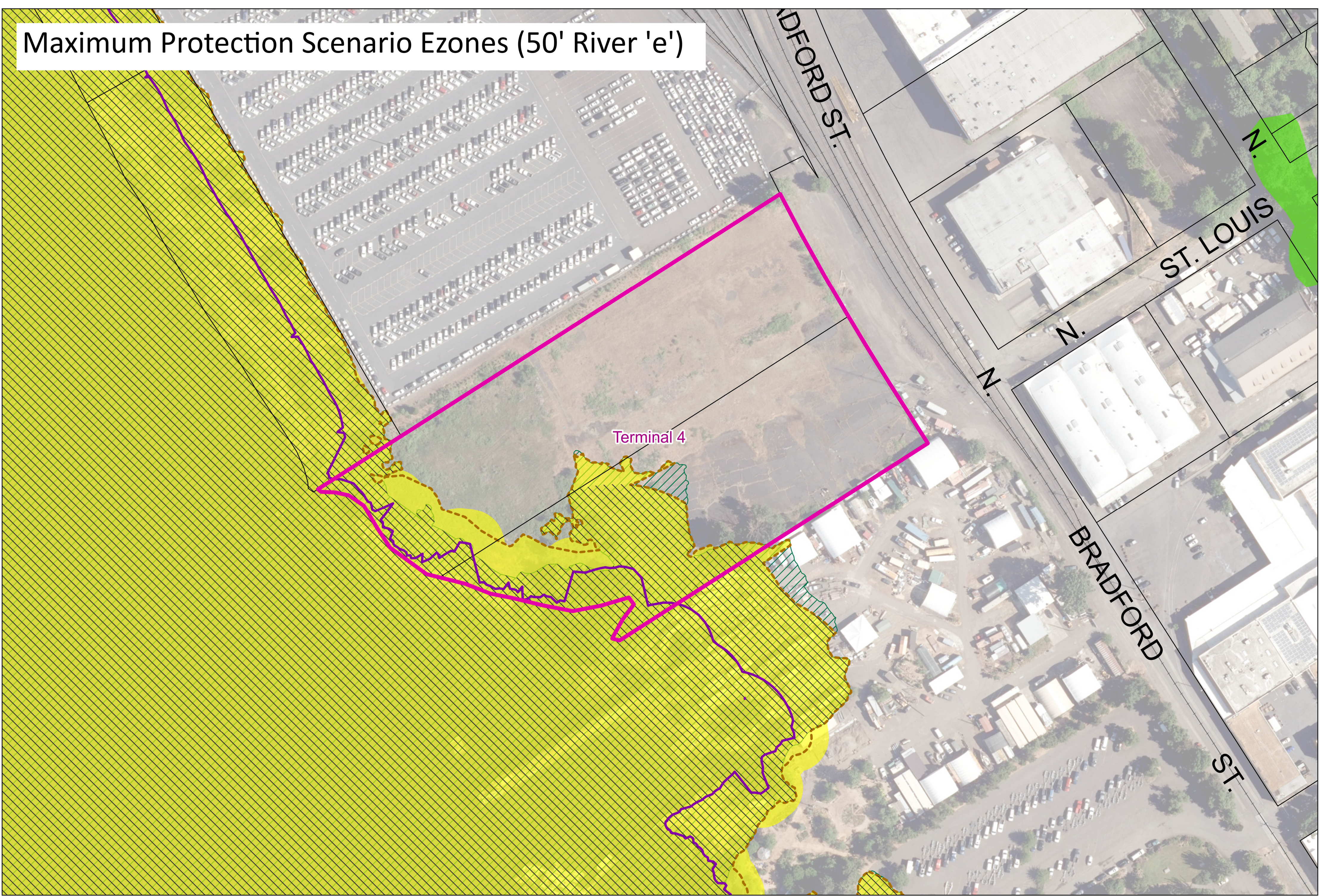
Owner	Base Zone	Site Address	Site Acreage	Existing Pzone	Existing (Pzone + Czone)	Minimum Pzone	Minimum (Pzone + Czone)	Climate Resilient Pzone	Climate Resilient (Pzone + Czone)	Maximum Protection Pzone	Maximum Protection (Pzone + Czone)	Greenway	River 'e' 25 ft	River 'e' 50 ft	Other Constraints
SILTRONIC CORP	IH	7200 NW FRONT AVE	80	1%	4%	0%	0%	0%	0%	0%	0%	9%	44%	46%	ECSI, CFHA, HHA, LSHA, Sewer, Storm, Water, TranSub
ESCO	IH	NW FRONT AVE	10.3	0%	5%	0%	0%	0%	0%	0%	0%	0%	12%	12%	ECSI, LSHA



Terminal 4

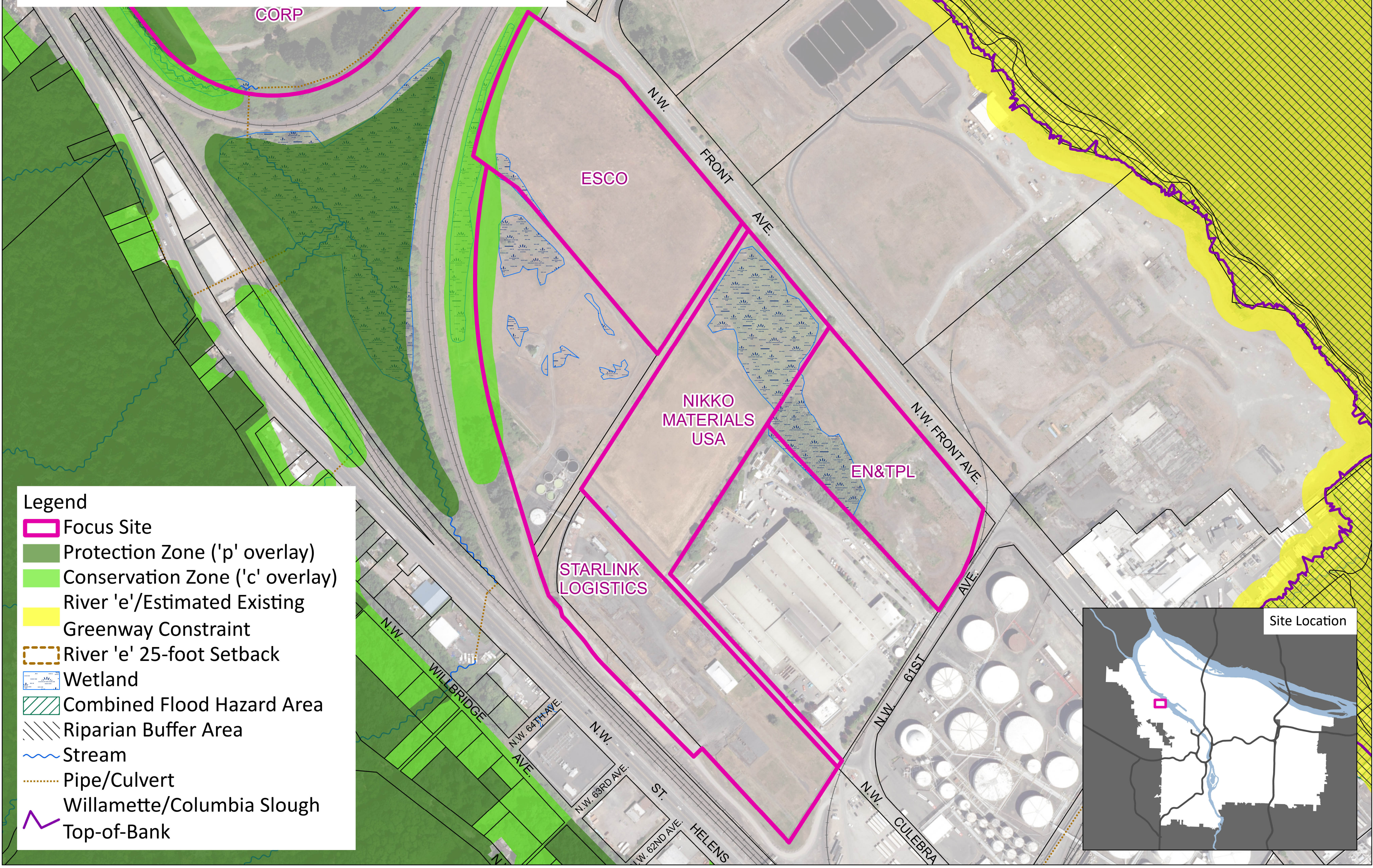


Owner	Base Zone	Site Address	Site Acreage	Existing Pzone	Existing (Pzone + Czone)	Minimum Pzone	Minimum (Pzone + Czone)	Climate Resilient Pzone	Climate Resilient (Pzone + Czone)	Maximum Protection Pzone	Maximum Protection (Pzone + Czone)	Greenway	River 'e' 25 ft	River 'e' 50 ft	Other Constraints
Terminal 4	IH	8940 WJ/ N BRADFORD ST	6.5	0%	0%	0%	0%	0%	0%	0%	0%	23%	25%	26%	ECSI, CFHA, LSHA, Sewer, Public, TransSub

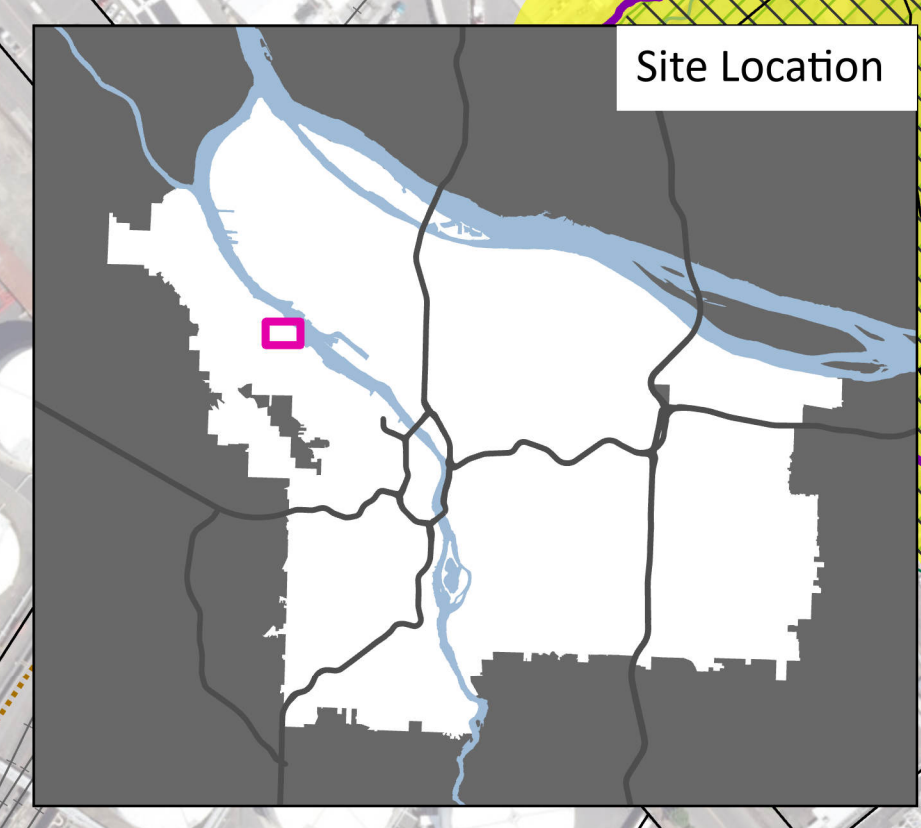


ESCO, Starlink, Nikko, EN&TPL

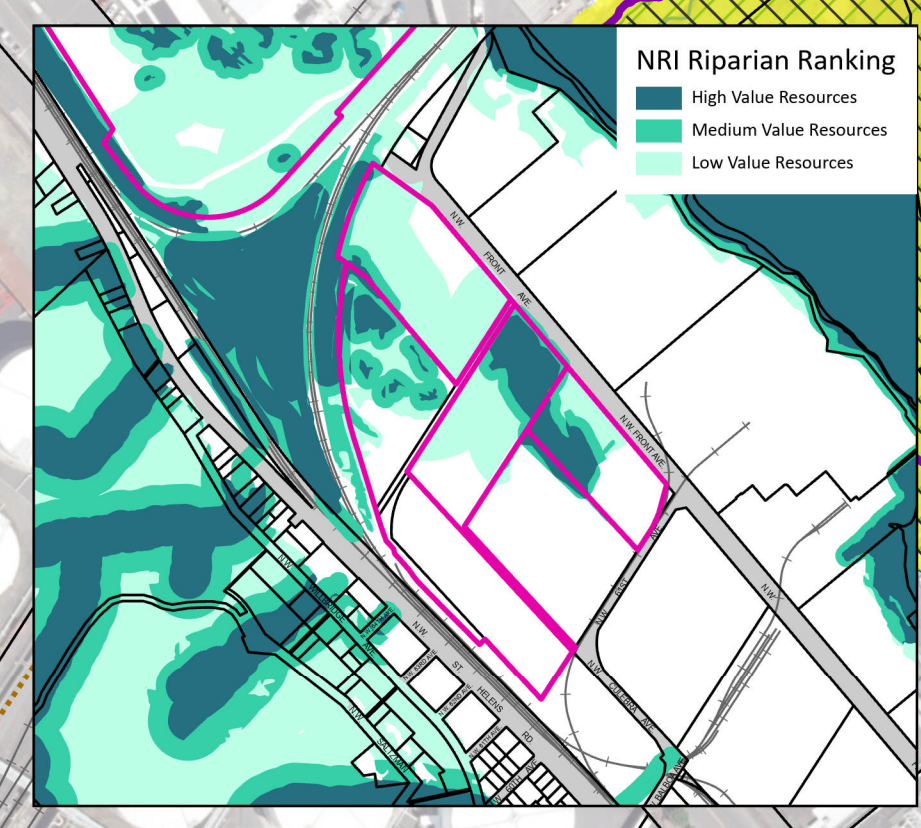
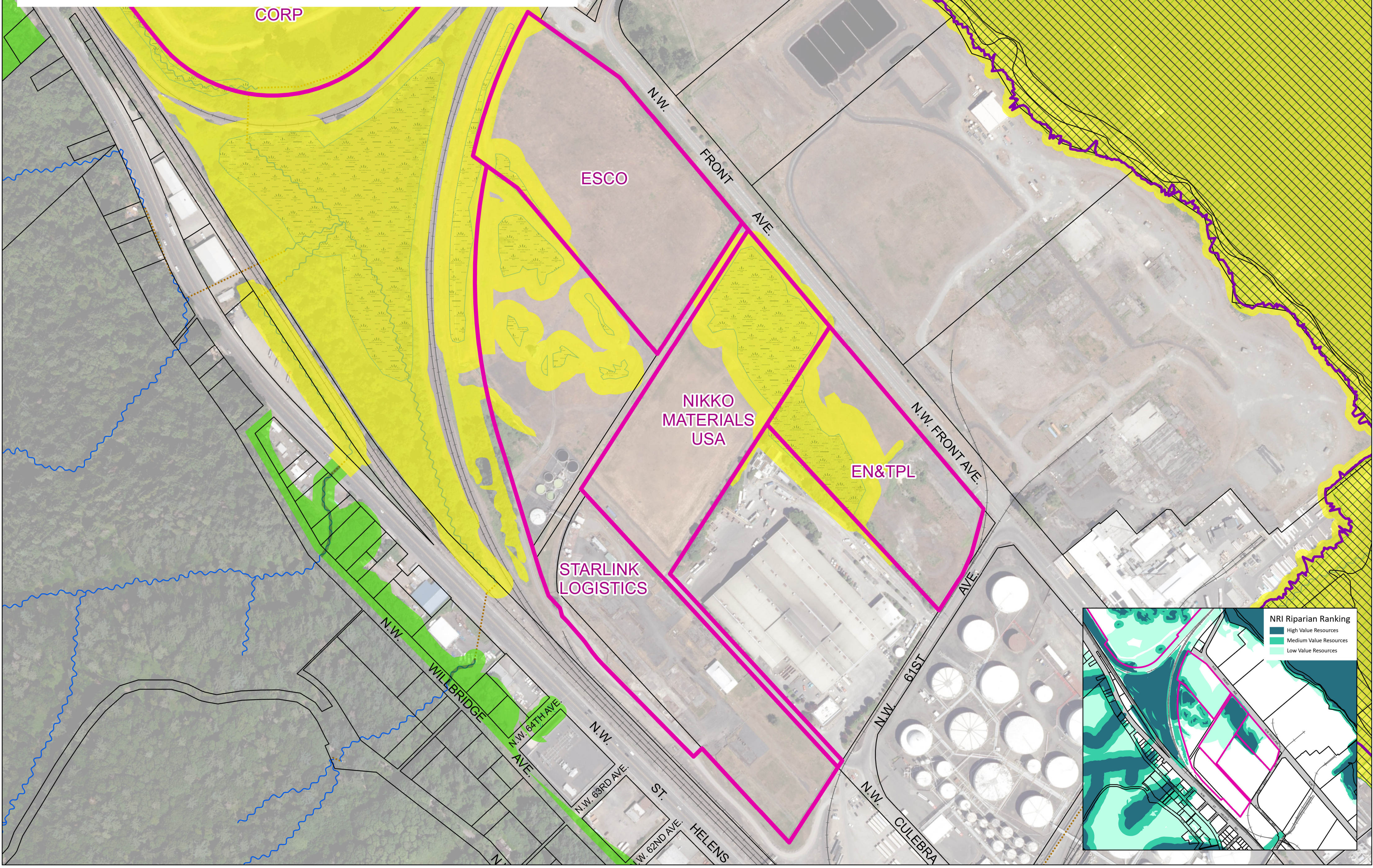
Existing Ezones (Greenway Constraint)



- Legend**
- Focus Site
 - Protection Zone ('p' overlay)
 - Conservation Zone ('c' overlay)
 - River 'e'/Estimated Existing Greenway Constraint
 - River 'e' 25-foot Setback
 - Wetland
 - Combined Flood Hazard Area
 - Riparian Buffer Area
 - Stream
 - Pipe/Culvert
 - Willamette/Columbia Slough
 - Top-of-Bank

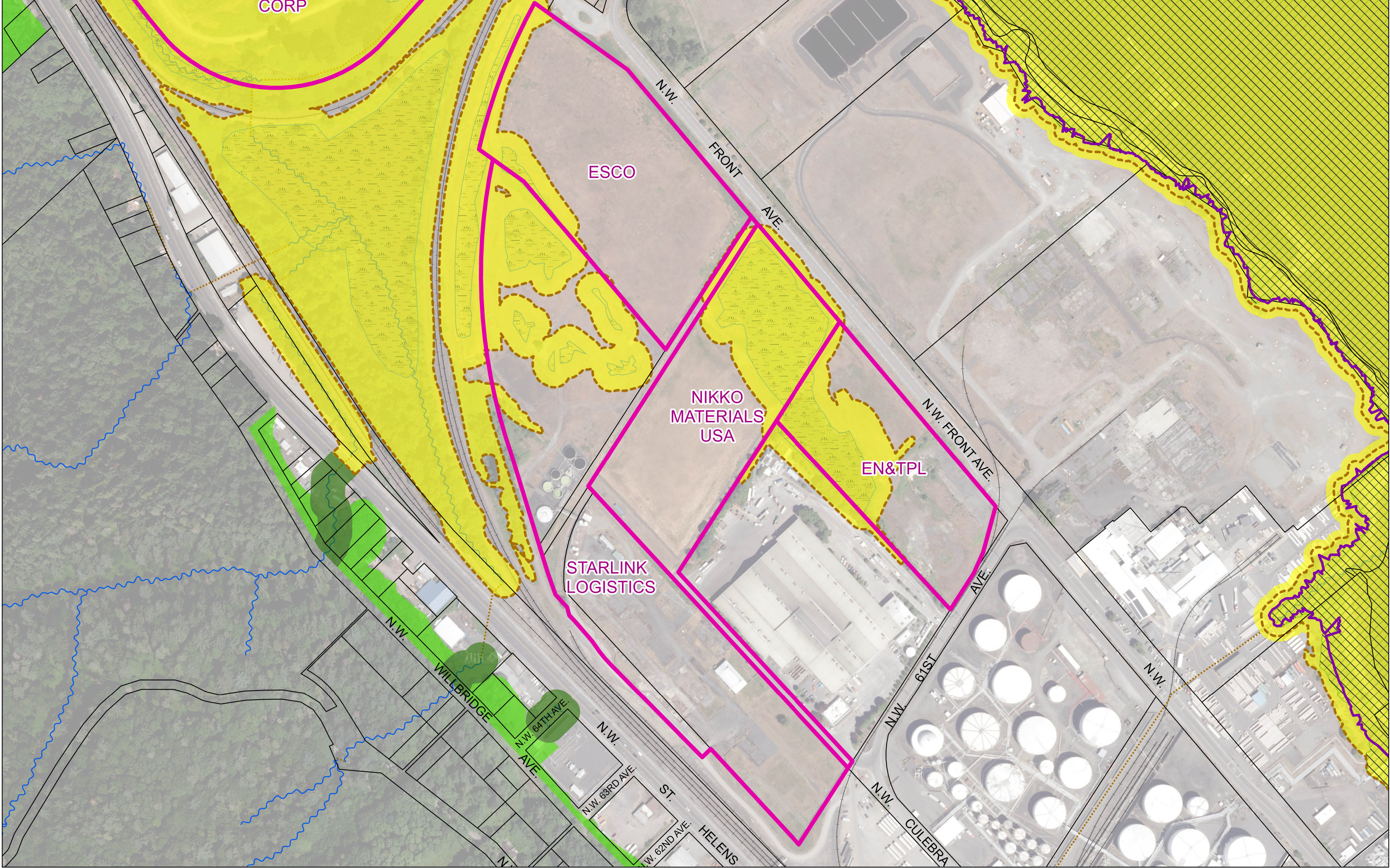


Minimum Scenario Ezones (25' River 'e')



Owner	Base Zone	Site Address	Site Acreage	Existing Pzone	Existing (Pzone + Czone)	Minimum Pzone	Minimum (Pzone + Czone)	Climate Resilient Pzone	Climate Resilient (Pzone + Czone)	Maximum Protection Pzone	Maximum Protection (Pzone + Czone)	Greenway	River 'e' 25 ft	River 'e' 50 ft	Other Constraints
SILTRONIC CORP	IH	7200 NW FRONT AVE	80	1%	4%	0%	0%	0%	0%	0%	0%	9%	44%	46%	ECSI, CFHA, HHA, LSHA, Sewer, Storm, Water, TranSub
ESCO	IH	NW FRONT AVE	10.3	0%	5%	0%	0%	0%	0%	0%	0%	0%	12%	12%	ECSI, LSHA
STARLINK LOGISTICS	IH	6193 NW 61ST AVE	18	0%	6%	0%	0%	0%	0%	0%	0%	0%	28%	28%	ECSI, LUST, LSHA, Sewer, Storm, Water, TranSub
NIKKO MATERIALS USA	IH	5909 NW 61ST AVE	9.3	0%	0%	0%	0%	0%	0%	0%	0%	0%	36%	36%	ECSI, LSHA
EN&TPL	IH	6529 NW FRONT AVE	6.3	0%	0%	0%	0%	0%	0%	0%	0%	0%	38%	38%	ECSI, LUST

Maximum Protection Scenario Ezones (50' River 'e')



Climate Resilient Scenario Ezones (50' River 'e')

