

NEW!

Recycle batteries with glass



You can now set a bag of batteries on top of your glass recycling. Some batteries must be taped for safety.

Batteries can spark and cause fires

Battery-caused fires in garbage trucks and waste processing facilities have increased 40% over the past five years. These fires put workers' lives in danger and can cost millions of dollars in damage. To prevent fires, batteries must be collected separately, and the batteries most likely to cause fires must be taped.



NEVER put batteries in **trash** or the **mixed recycling**

How to recycle batteries at the curb

✓ YES

- Any battery that fits in a sealed 1-quart plastic bag, including:
- AAA, AA, C, D, button-cell, coin, 6 and 9-volt batteries
- Rechargeable and single-use batteries
- Batteries that can be easily removed (old cell phones, cameras, etc.)



✗ NO

- Batteries that do not fit in a sealed 1-quart plastic bag
- Damaged, corroded, or bulging batteries
- Items with embedded batteries: Cell phones, fitness bands, wireless devices, electric toothbrushes, etc.
- Vape pens and e-cigarettes



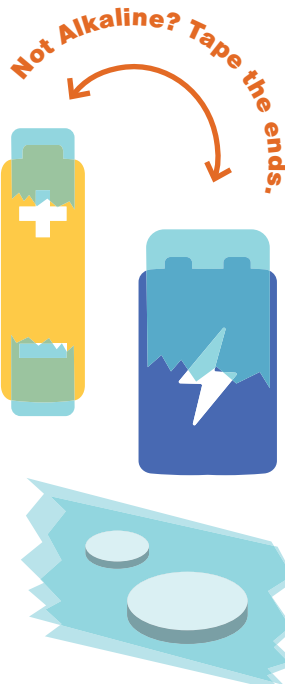
1. TAPE



Any battery **not labeled alkaline** must have both ends taped with clear tape. Clear tape allows recycling companies to see the battery type and recycle it safely.

Can't tell what type of battery it is? When in doubt, tape it.

For button and coin-shaped batteries, wrap tape around the entire battery or sandwich multiple batteries between two layers of tape (leave space between each battery).



2. BAG

Place batteries in a **1-quart**, clear, zip-sealed plastic bag.



3. BIN

Put the bag in your **glass bin**, on top of the glass so the driver will see it.



Where to take other batteries

Call 503-234-3000 or search www.oregonmetro.gov/findarecycler to find drop-off options near you.

2024-25 COLLECTION SCHEDULE

Look up your collection day
www.portland.gov/garbage/day

Recycling - Glass & Batteries - Compost - Garbage

JUL 2024	M	T	W	T	F	S	AUG 2024	M	T	W	T	F	S	SEP 2024	M	T	W	T	F	S	
	1	2	3	4	5	6					1	2	3		2	3	4	5	6	7	
	8	9	10	11	12	13		5	6	7	8	9	10		9	10	11	12	13	14	
	15	16	17	18	19	20		12	13	14	15	16	17		16	17	18	19	20	21	
	22	23	24	25	26	27		19	20	21	22	23	24		23	24	25	26	27	28	
	29	30	31					26	27	28	29	30	31		30						
OCT 2024	M	T	W	T	F	S	NOV 2024	M	T	W	T	F	S	DEC 2024	M	T	W	T	F	S	
		1	2	3	4	5						1	2		2	3	4	5	6	7	
	7	8	9	10	11	12		4	5	6	7	8	9		9	10	11	12	13	14	
	14	15	16	17	18	19		11	12	13	14	15	16		16	17	18	19	20	21	
	21	22	23	24	25	26		18	19	20	21	22	23		23	24	X	26	27	28	
	28	29	30	31				25	26	27	28	29	30		30	31					
JAN 2025	M	T	W	T	F	S	FEB 2025	M	T	W	T	F	S	MAR 2025	M	T	W	T	F	S	
			X	2	3	4							1							1	
	6	7	8	9	10	11		3	4	5	6	7	8		3	4	5	6	7	8	
	13	14	15	16	17	18		10	11	12	13	14	15		10	11	12	13	14	15	
	20	21	22	23	24	25		17	18	19	20	21	22		17	18	19	20	21	22	
	27	28	29	30	31			24	25	26	27	28			24	25	26	27	28	29	
																				31	
APR 2025	M	T	W	T	F	S	MAY 2025	M	T	W	T	F	S	JUN 2025	M	T	W	T	F	S	
		1	2	3	4	5					1	2	3		2	3	4	5	6	7	
	7	8	9	10	11	12		5	6	7	8	9	10		9	10	11	12	13	14	
	14	15	16	17	18	19		12	13	14	15	16	17		16	17	18	19	20	21	
	21	22	23	24	25	26		19	20	21	22	23	24		23	24	25	26	27	28	
	28	29	30					26	27	28	29	30	31		30						

* Every-four-week garbage customers, your garbage collection weeks are shown with an asterisk.

🕒 Set bins at the curb before 6 a.m. Bring them back to your house within 24 hours.

Free garbage day reminders

Join the 50,000 Portlanders who get day-before reminders every week by app, email, text, or phone call.

Have you tried the app? It's got great reviews!

Download the Portland Garbage Day Reminder app in the App Store or on Google Play to get pop-up reminders to set out your bins, look up your garbage company, play the Recycle or Not game, and more.

No internet? No problem: Call 503-823-7202 to request text or phone call reminders.

Sign up for app, email, text, or phone call reminders at:



www.portland.gov/garbage/day

Service delays

- **Holiday delays:** There's no pick-up on Christmas and New Year's Day. Collection is delayed by one day these weeks.
- **Weather delays:** In case of ice, snow, or wildfire smoke, collection may be delayed. Leave bins at the curb and they will be emptied as soon as it's safe to do so.
- **Early pickup on hot days:** Collection may start before 6 a.m. on days forecasted to be 95 degrees or hotter. Set bins at the curb the night before.
- **Get real-time alerts about service disruptions:** Go to www.portland.gov/garbage/day and click "Get a reminder!" ("Service alerts only" is an option.)

QUICK REFERENCE GUIDE



See the full list of what's allowed
www.portland.gov/recycle



Recycle



Plastic bottles & jars with a neck (6 oz or larger) & buckets (5 gal or smaller). Plastic round containers (6 oz or larger) & plant pots (4" or larger). All empty & dry.



Metal food cans (aluminum, tin & steel), paint & aerosol cans, all empty & dry. Scrap metal under 30" & 30 lbs.



Flattened cardboard. Paper, magazines & catalogs. Milk, juice & soup cartons, all empty & dry.



No plastic bags, wrap or lids, glass, coffee cups, to-go containers



Compost



Meat, cheese, seafood, bones & eggshells. Bread, pasta, grains, nuts, beans, fruit, vegetables & coffee grounds. Spoiled food & plate scrapings.



Weeds, leaves, grass, flowers, house plants, plant clippings, pumpkins. Branches under 4" thick & 36" long.



Food-soiled napkins & paper towels. Paper coffee filters & tea bags. Pizza delivery boxes.



No pet waste, dirt, rocks, ashes, lumber, to-go containers



Garbage



Plastic bags, plastic lids & plastic-padded mailers. Wires, hoses, chains & electric cords. Disposable gloves & masks.



To-go containers, cutlery, cups, lids & straws (paper, plastic & "compostable"). Frozen food boxes.



Bag pet waste, cat litter, diapers, ashes, sawdust & broken glass. Put fats, oils & grease in sealed container.



No TVs, computers, batteries, paint, pesticides, flammables



Glass



Put in glass-only bin. Glass food & beverage bottles & jars. All empty & dry. All colors of glass. OK to leave labels on.

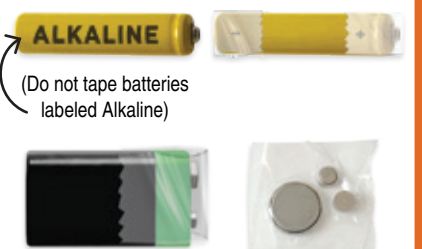
Redeem deposit bottles at BottleDrop Centers or recycle at the curb.



No lids, caps, ceramics, lightbulbs, broken glass



Batteries



(Do not tape batteries labeled Alkaline)

Batteries must fit in a sealed 1-quart plastic bag.

1. Tape ends of batteries (unless labeled Alkaline). Use clear tape.
2. Put all batteries in a clear, zip-sealed 1-quart bag.
3. Place bag on top of glass.



No batteries larger than a 1-quart bag, embedded or damaged batteries, vape pens



Other Waste



Not sure how to get rid of something? Call 503-234-3000 or use oregonmetro.gov/askmetro to find options for safe disposal, recycling, or donation.



Motor Oil



Put in a leak-proof clear plastic jug with lid. Place next to bins.

Tool Libraries: Borrow & Save

Get the tools you need for FREE at one of Portland's Tool Lending Libraries.

Whether you need to mow your lawn, hang a shelf, or retile your bathroom, these community-run libraries can provide you with tools for carpentry, plumbing, electrical work, and more.

Save money and space: For tools you only use a few times a year, save money and storage space by borrowing instead of buying.

Get advice and go green: Learn how to use tools, meet people from your neighborhood, and get advice about home and garden projects. Plus, for every tool you borrow, you've saved all the energy, natural resources, and carbon emissions needed to make and transport a new tool to you.



Learn more:

www.portland.gov/bps/tools



How it works

- Find your closest tool library
- Sign up to be a member
- Borrow tools for free!

- 1 North Portland Tool Library**
2209 N Schofield St.
- 2 NE Portland Tool Library**
5431 NE 20th Ave.
- 3 SE Portland Tool Library**
1137 SE 20th Ave.
- 4 East Portland Tool Library**
1736 SE 106th Ave.
- 5 Green Lents Community Tool Library**
9215 SE Ramona St.
- 6 SW Portland Tool Library**
Bertha Blvd. & Beaverton Hillsdale Hwy.



THE BUREAU OF PLANNING & SUSTAINABILITY

1810 SW 5th Ave, Ste 710, Portland, OR 97201
www.portland.gov/bps | 503-823-7202

facebook.com/PortlandBPS
twitter.com/PortlandBPS



PRSR STD
US POSTAGE
PAID
PORTLAND OR
PERMIT NO 653

FIND INSIDE >>>>

NEW: Battery recycling
Plus, a waste sorting guide &
12-month garbage schedule

Portland Curbsider

Look inside:
NEW battery recycling service



You can now set a 1-quart, zip-sealed bag of batteries on top of your glass recycling. Some batteries must be taped for safety.



LEARN MORE INSIDE
or go to www.portland.gov/batteries

Garbage bin options and rates

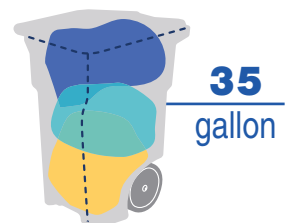
Need a bigger garbage bin? You have options! Contact your garbage company. See the monthly rate for each size at the link below.

Garbage rates are reviewed every year and set based on what it costs to provide garbage, recycling, and compost service. This includes the trucks and drivers you see every week as well as the cost of safely disposing of garbage and turning recyclables and compost into new products. New rates take effect July 1.

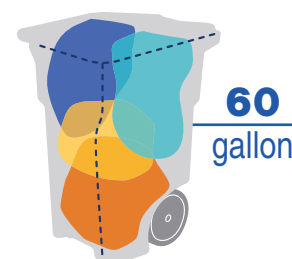
Learn more: www.portland.gov/garbage-rates



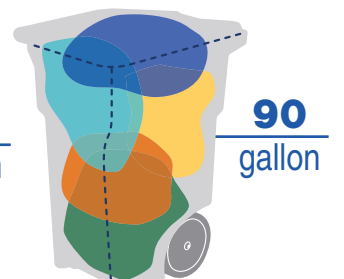
20
gallon



35
gallon



60
gallon



90
gallon

The City of Portland is committed to providing meaningful access. To request translation, interpretation, modifications, accommodations, or other auxiliary aids or services, contact 311, Relay: 711

Traducción e Interpretación | Biên Dịch và Thông Dịch | अनुवादन तथा व्याख्या | 口笔译服务 | Устный и письменный перевод | Turjumaad iyo Fasiraad |

Письмовий і усний переклад | Traducere și interpretariat | Chiaku me Awewen Kapas | 翻訳または通訳 | ព្រឹត្តិការណ៍បកប្រែ និង ការបកប្រែតាមសំឡេង | الترجمة التحريرية أو الشفهية

311 | www.portland.gov/bps/accommodation