

“Horses Through History & World Cultures”

Parkrose High School Community Center
12003 NE Shaver St.

Saturday- July 28, 2007
Noon-2pm

Program

Welcome- Joanne Oleksiak

Introductions

- statements by students
- staff
- community members

Tour of the mural- Larry Kangas, artist

Thank you

- major sponsors
- supporters

Larry Kangas
Kangas Murals
2185 SW 139th Ave.
Beaverton, OR 97005
800.398-3776
www.muralz.com

Larry Kangas has painted over one thousand murals in about thirty years, so far. They include murals of all types and sizes. The walls were for public historical themes, museum walls, business applications, trailer trucks, car dealership windows, numerous private homes, any several odd and unusual applications. His web site clearly expresses this diversity: <http://muralz.com>.

Of these, at least five exceeded two thousand square feet. Toppenish, Washington has one that he painted that measured 110 feet long and thirty feet high. For these, he has used a variety of lift equipment such as scissor lifts, articulating boom lifts, scaffolding, and ladders.

Larry's public art pieces have been predominately historical in nature. They can be seen in Oregon in such towns as Sweet Home (5), Mt. Angel (5), Fossil, Canyon City (2), Lebanon (2), Oregon City (3), Portland (5), Canby (2), Troutdale, and the Bridge of the Gods in Cascade Locks. In Washington, they can be seen in Toppenish, Seattle, Issaquah (4), Snoqualmie (4), Pearson Air Museum in Vancouver (6), and McChord Air Force Base in Tacoma (2).

Generally Kangas works alone but has done at least three murals that included working with children & youth. In Canyon City, the local 4-H did a lower section of his mural with and interpretation of his theme. At Rex Putnam High School in Gladstone Kangas did two murals with "at risk" youth, working closely with them for ideas. The city of Milwaukie hired him to work with a high school art class to take a project from the start and having the students work it to completion.

Larry Kangas generally uses high quality exterior latex along with Nova Color. All work is done with the maximum life expectancy in mind by using good primer, quality paints and effective UV final coatings. His application has normally been with brushes, big brushes.

Larry received a BA in Art from the University of Massachusetts in 1970 and did further study at Cornish Institute of Allied Art in Seattle in 1980. All the thousand murals since were studies for his next mural.

Larry Kangas
Kangas Murals
2185 SW 139th Ave.
Beaverton, Oregon 97005
800.398-3776
www.muralz.com

A handwritten signature in black ink, appearing to read 'Larry Kangas', written in a cursive style.

Larry Kangas has painted over one thousand murals in about thirty years, so far. They include murals of all types and sizes. The walls were for public historical themes, museum walls, business applications, trailer trucks, car dealership windows, numerous private homes, and several odd and unusual uses. His web site clearly expresses this diversity: <http://muralz.com>.

Of these, at least five murals exceeded two thousand square feet. Toppenish, Washington has one that he painted that measured 110 feet long and thirty feet high. For these larger projects he has used a variety of lift equipment such as scissor lifts, articulating boom lifts, scaffolding, and ladders.

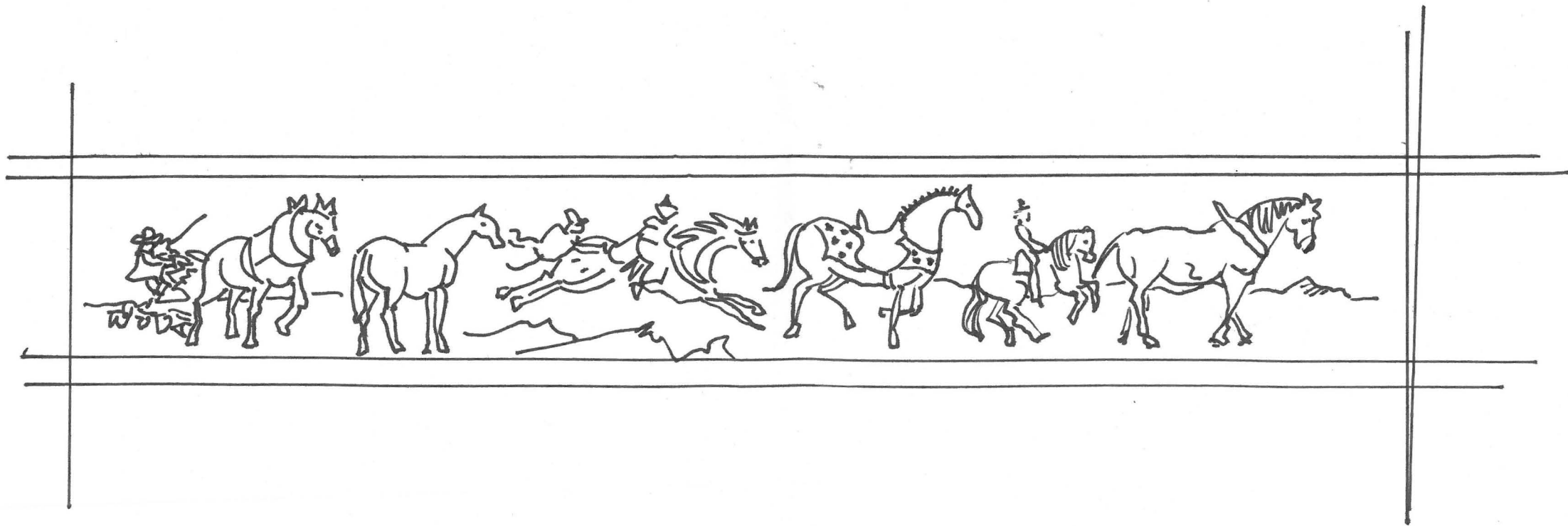
Larry's public art pieces have been predominantly historical in nature. They can be seen in Oregon in such towns as Sweet Home (5), Mt. Angel (5), Fossil, Canyon City (2), Lebanon (2), Oregon City (3), Portland (5), Troutdale, and the Bridge of the Gods in Cascade Locks. In Washington state his murals can be seen in Toppenish, Seattle, Issaquah (4), Snoqualmie (4), Pearson Air Museum in Vancouver (6), and McChord Air Force Base in Tacoma (2).

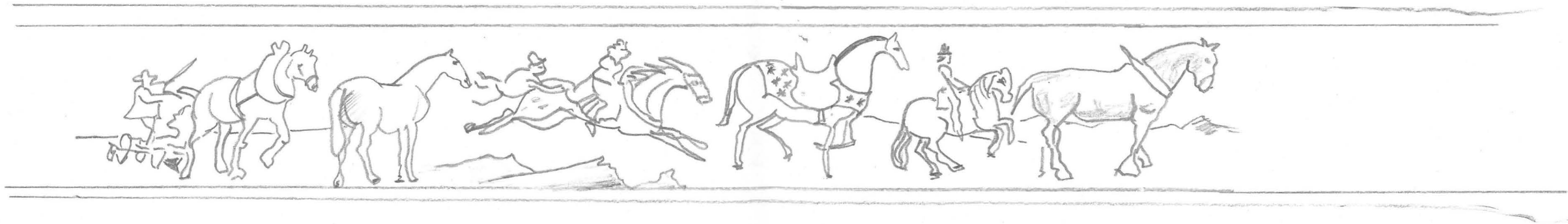
Generally, Kangas works alone but has done at least three murals that included working with children and youth. In Canyon City, the local 4-H did a lower section of his mural with an interpretation of his theme. At Rex Putnam High School in Gladstone, OR Kangas did two murals with "at risk" youth, working closely with the students for ideas. The city of Milwaukie, OR hired him to work with a high school art class to take a mural project from the start and have students work it to completion.

Larry Kangas usually uses high quality exterior latex along with Nova Color. All work is done with maximum life expectancy of the mural in mind by using good primer, quality paints and effective UV final coatings. His application has normally been with brushes, big brushes.

Larry received a BA in Art from the University of Massachusetts in 1970 and did further study at Cornish Institute of Allied Art in Seattle in 1980. All the thousand murals since were studies for his next mural.

ook Trevor





August 30-September 22, 2007

**Graffiti
Fine Artists
Wanted**

PCC student show



**Interstate Firehouse
Cultural Center**

Gallery Theatre Events Community

In the IFCC Gallery

August 30-September 22

Graffiti Fine Artists Wanted

Excitingly spontaneous, self-expressive explosiveness in sometimes raw yet beautiful works of Fine Art created by Artists from Portland Community College. Positive and Powerful Graffiti Fine Art includes a Tribute to VA Tech, wall hangings, clothing, shoes, furniture, bicycles and more.
Gallery Hours Tuesday-Friday 11-6, Saturday 12-4
September 30: opening Celebration 5:00-7:30
All IFCC Gallery Events are free.

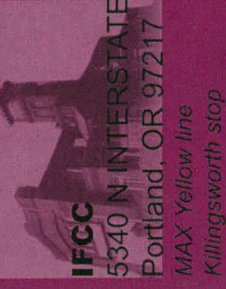
In the IFCC Theatre

September 7-15

PICA presents Time Based Art Festival

Embracing a wide variety of contemporary art forms, TBA features artists from the Northwest, the U.S. and the World. TBA is about the future. The IFCC is proud to house two TBA productions: Map Me and Repeat After Me.
For details: 503.224.PICA www.pica.org

Call to Performers and Producers: October 5th is the deadline for application to the IFCC Theater. The theatre rentals are curated like our Gallery so that the IFCC ensures an open, accessible application process and diverse offerings of production through out the year. Please check out our website for details. www.ifcc-arts.org



NON PROFIT ORG
US POSTAGE PAID
PORTLAND
PERMIT NO. 806

503.823.4322 **www.ifcc-arts.org**



PORTLAND PARKS & RECREATION

Healthy Parks, Healthy Portland

ALL EVENTS OF THE PROGRAM ARE FREE
SOUTH WATERFRONT NEIGHBORHOOD'S
AND OPEN TO THE GENERAL PUBLIC.

MONTHLY GUEST ARTIST SERIES

PRESENTED BY SOUTH WATERFRONT'S
ARTIST IN RESIDENCE PROGRAM
SEPTEMBER '07-SEPTEMBER '08

A PROGRAM DEVOTED TO **PLACE-MAKING**, THROUGH
TEMPORARY ACTS OF PERFORMANCE, INSTALLATION,
AND WRITTEN/SPOKEN WORD.



SOUTH WATERFRONT NEIGHBORHOOD'S

MONTHLY GUEST ARTIST SERIES

GUEST ARTISTS

Tim DuRoche	Sept. '07	Composer/Conceptual Artist
Dana Lynn Louis	Oct. '07	Visual Artist
Dmae Roberts	Nov. '07	Playwright, Actor, Radio Producer & U.S. Artists Rockefeller Fellow
Tahni Holt	Dec. '07	Dance Artist
David Oates	Jan. '08	Writer
Christopher Rauschenberg	Feb. '08	Photographer
Adam Kuby	Mar. '08	Visual Artist
Mark R. Smith/Maria Innocencio	Apr. '08	Visual Artists
Horatio Hung-Yan Law	May '08	Visual Artist
Linda Wysong	Jun. '08	Visual Artist
Bill Will	Jul. '08	Visual Artist
Sojourn Theatre	Aug. '08	Ensemble Theatre
PICA's TBA:08	Sept. '08	TBA

FIRST SATURDAYS, 11a-1p, @ the AiR StudioStorefront at the east-facing base of the John Ross Tower on SW River Parkway. Come meet the artist(s) and hear about each project. Check the website, WWW.SOUTHWATERFRONT.COM for detailed information about each project cycle and other events in the Artist in Residence Program.

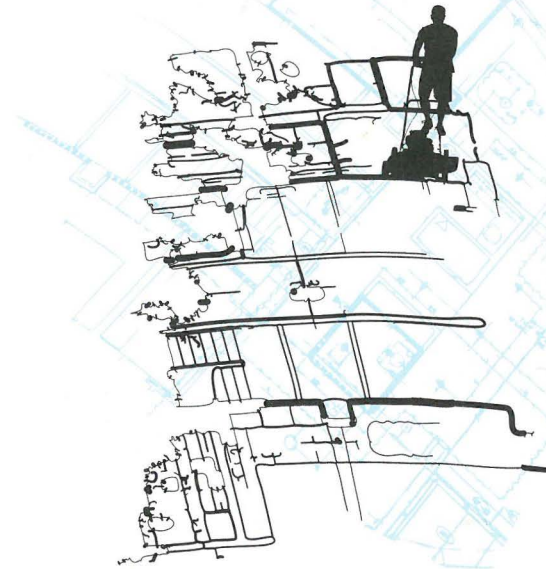
FINDING US: Visit the website, WWW.SOUTHWATERFRONT.COM/CONTACTUS, for details about getting to the South Waterfront by bike, streetcar, tram or automobile.

FOR MORE INFORMATION:

Linda K. Johnson, Artist in Residence

artistinresidence@southwaterfront.com . 971.998.4810

Paper stock contains 50% total recycled content/25% post consumer waste





CHRIS HABERMAN

CHRIS HABERMAN

Something from Nothing: January 3 - February 2, 2008

Artist Reception: January 12, 4 - 6 p.m.

Artist Lecture: January 15, 7 p.m.

Painting Workshop: January 26 and February 2

Learn more at www.23sandy.com

Hours: Thurs - Sat, 12 - 6 p.m. and by appointment

Location: Three doors north of Sandy Blvd. on 23rd

23 Sandy Gallery is a member of the Central Eastside Arts District.

Pick up a map at the gallery for more First Friday openings
or check www.firstfridayart.com.

Opposite: *Alcoholique* © Chris Haberman, Acrylic on Wood





photo:
Joanne Oleksiak

Horses Through History & World Cultures

Parkrose High School Community Center
12003 NE Shaver St.
Portland, Oregon

Artist: Larry Kangas muralz.com
Assisted by: Parkrose students & community members
Funded by :RACC Public Arts Program
Support by: Sunbelt Rentals

Dedication celebration: Saturday July 28, 2007 noon-2pm