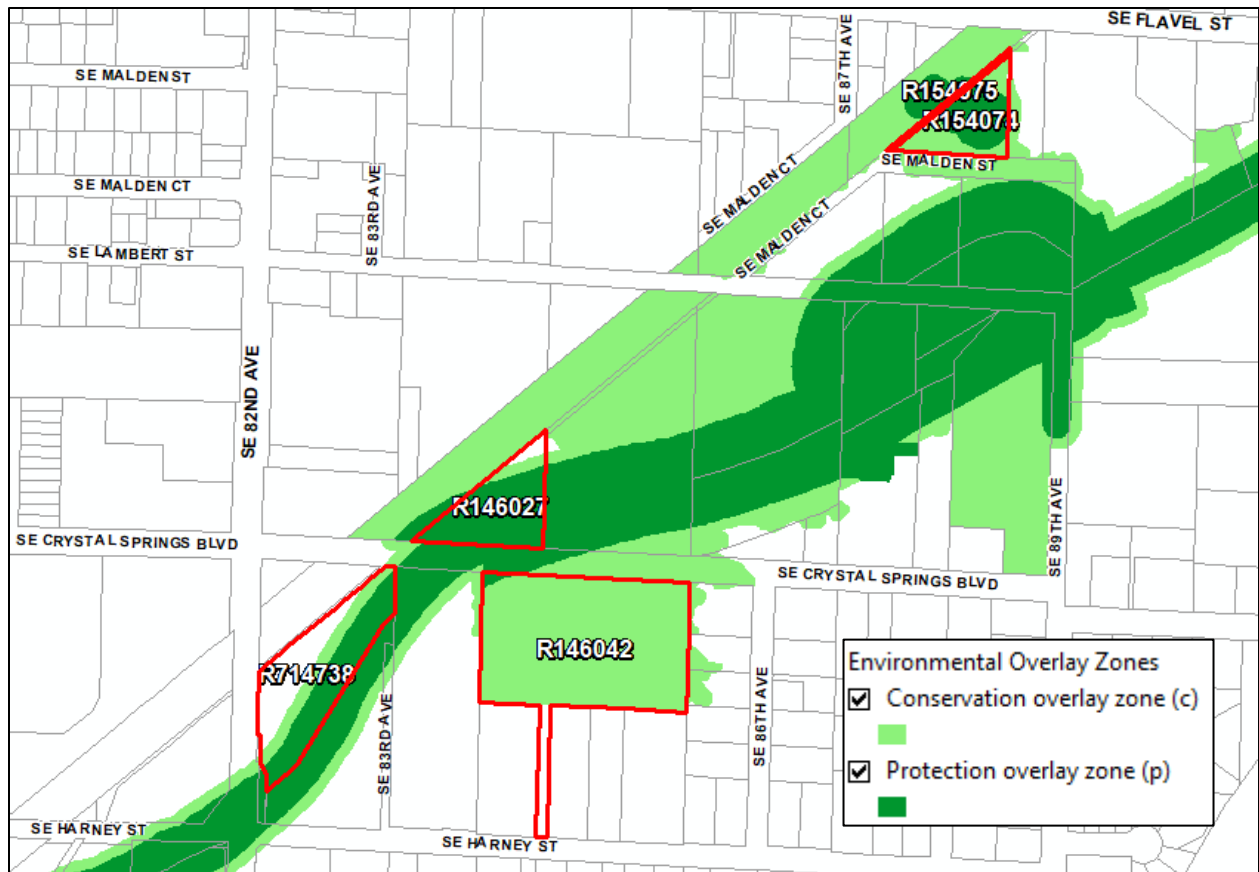


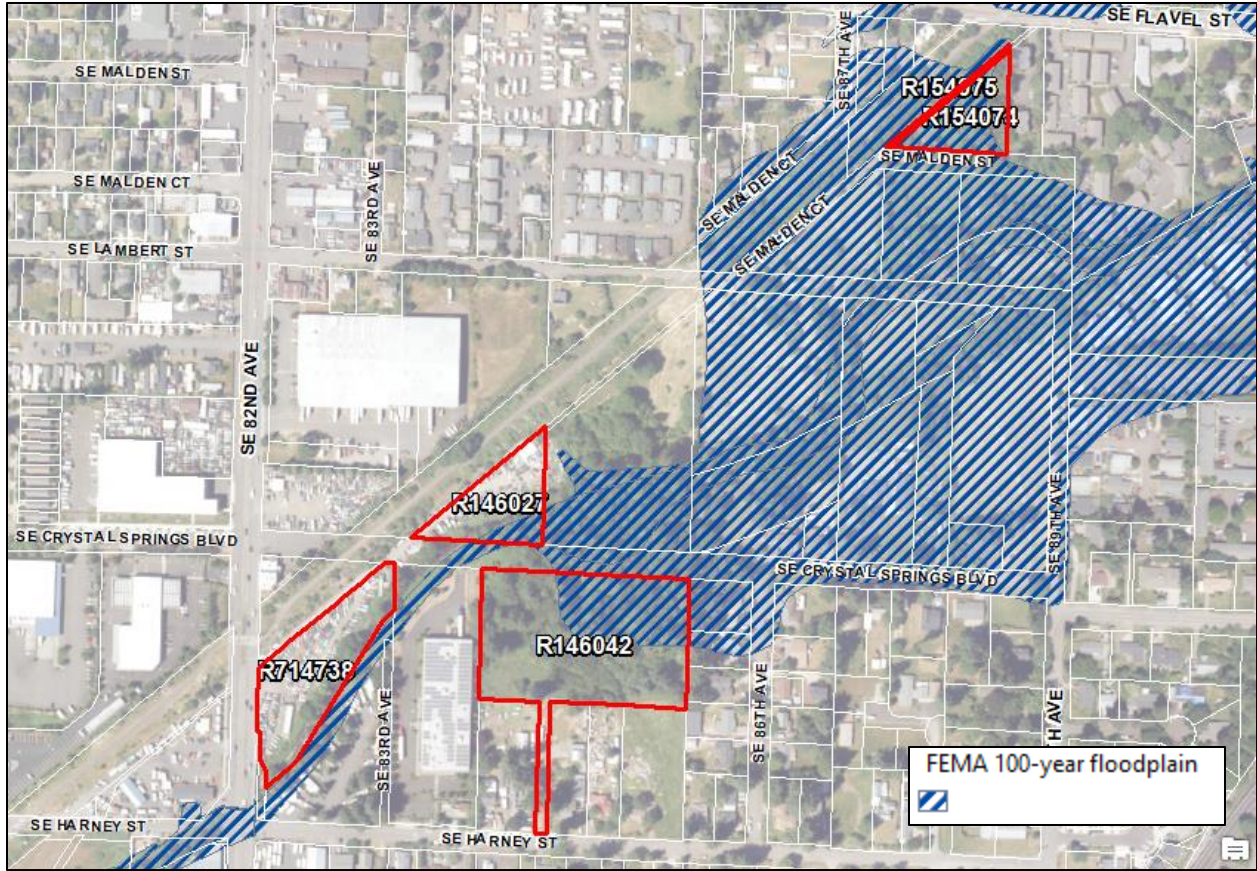
BES Rezoning Requests – West Lents parcels - Current zoning

<u>R number</u>	<u>Zoning</u>	<u>Ezone</u>	<u>Floodplain</u>	<u>Land Area</u>	<u>Notes</u>
R146027	EG2	c,p	partial	1.00 acre (43,710 sq ft)	under contract with city
R146042	IG2	c,p	partial	3.34 acres (145,498 sq ft)	
R154074	RM1	c,p	partial	0.80 acres (34,700 sq ft)	
R154075	RM1	c,p	yes	0.08 acres (3,580 sq ft)	state owned row sliver
R714738	EG2	c,p	no	1.54 acres (67,187 sq ft)	under contract with city



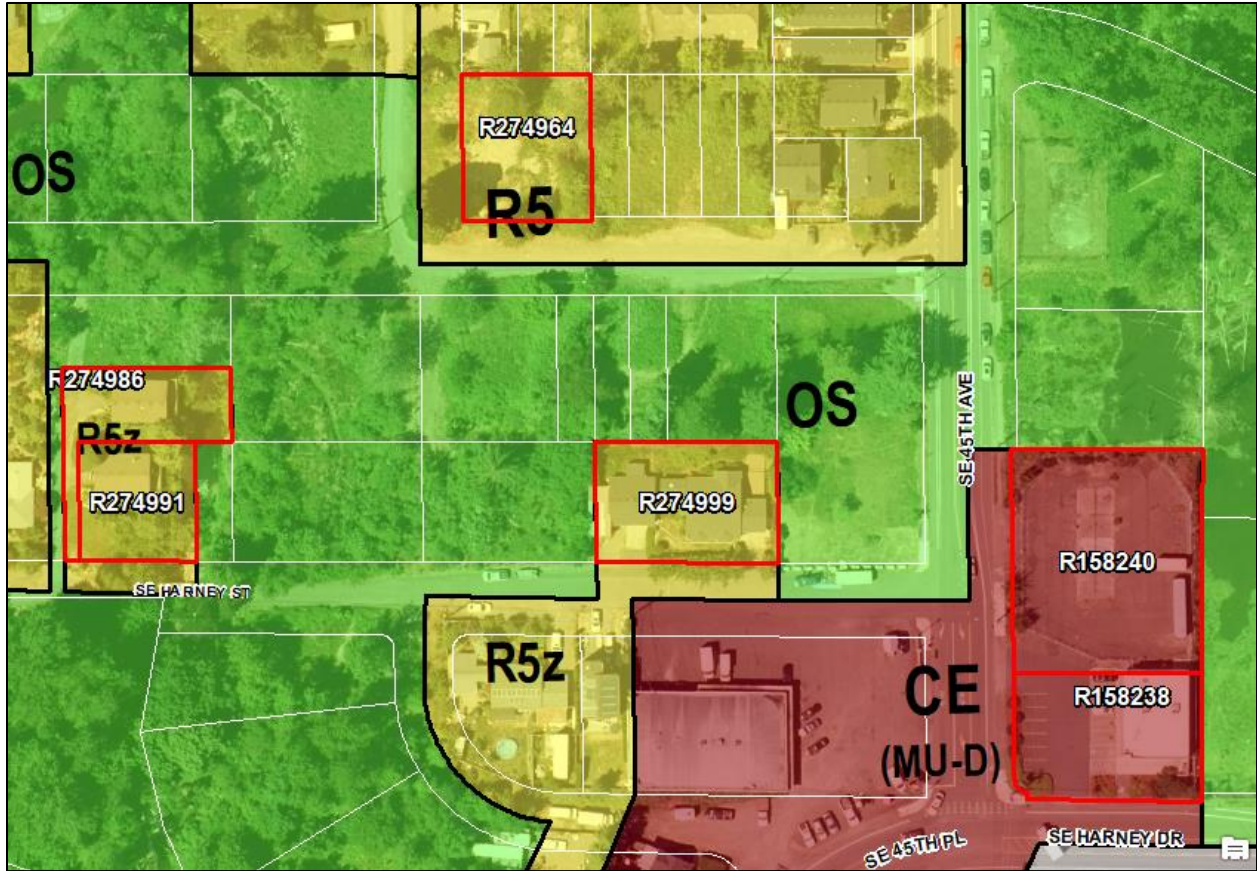
BES Rezoning Requests – West Lents parcels – Environmental overlay zones

<u>R number</u>	<u>Zoning</u>	<u>Ezone</u>	<u>Floodplain</u>	<u>Land Area</u>	<u>Notes</u>
R146027	EG2	c,p	partial	1.00 acre (43,710 sq ft)	under contract with city
R146042	IG2	c,p	partial	3.34 acres (145,498 sq ft)	
R154074	RM1	c,p	partial	0.80 acres (34,700 sq ft)	
R154075	RM1	c,p	yes	0.08 acres (3,580 sq ft)	state owned row sliver
R714738	EG2	c,p	no	1.54 acres (67,187 sq ft)	under contract with city



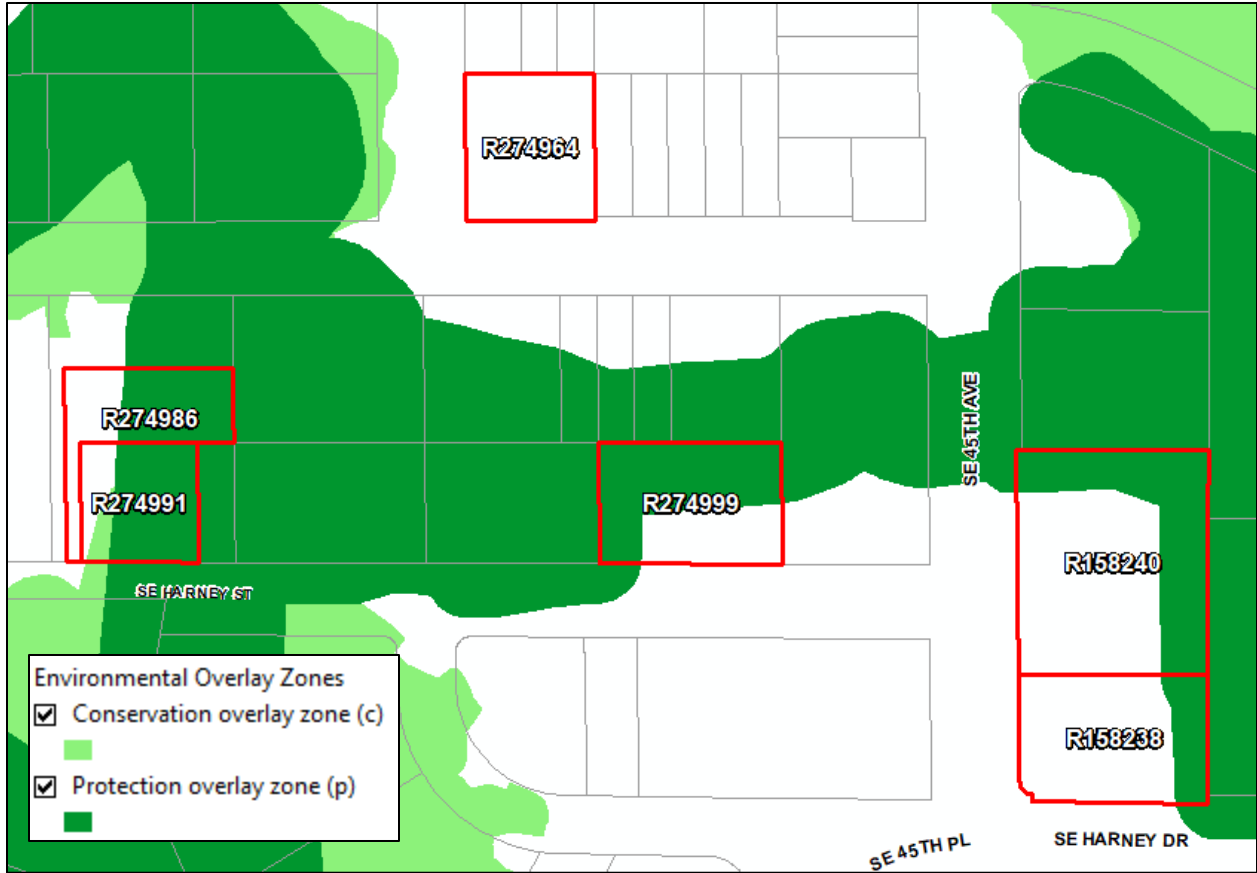
BES Rezoning Requests – West Lents parcels – FEMA 100-year floodplain

<u>R number</u>	<u>Zoning</u>	<u>Ezone</u>	<u>Floodplain</u>	<u>Land Area</u>	<u>Notes</u>
R146027	EG2	c,p	partial	1.00 acre (43,710 sq ft)	under contract with city
R146042	IG2	c,p	partial	3.34 acres (145,498 sq ft)	
R154074	RM1	c,p	partial	0.80 acres (34,700 sq ft)	
R154075	RM1	c,p	yes	0.08 acres (3,580 sq ft)	state owned row sliver
R714738	EG2	c,p	no	1.54 acres (67,187 sq ft)	under contract with city



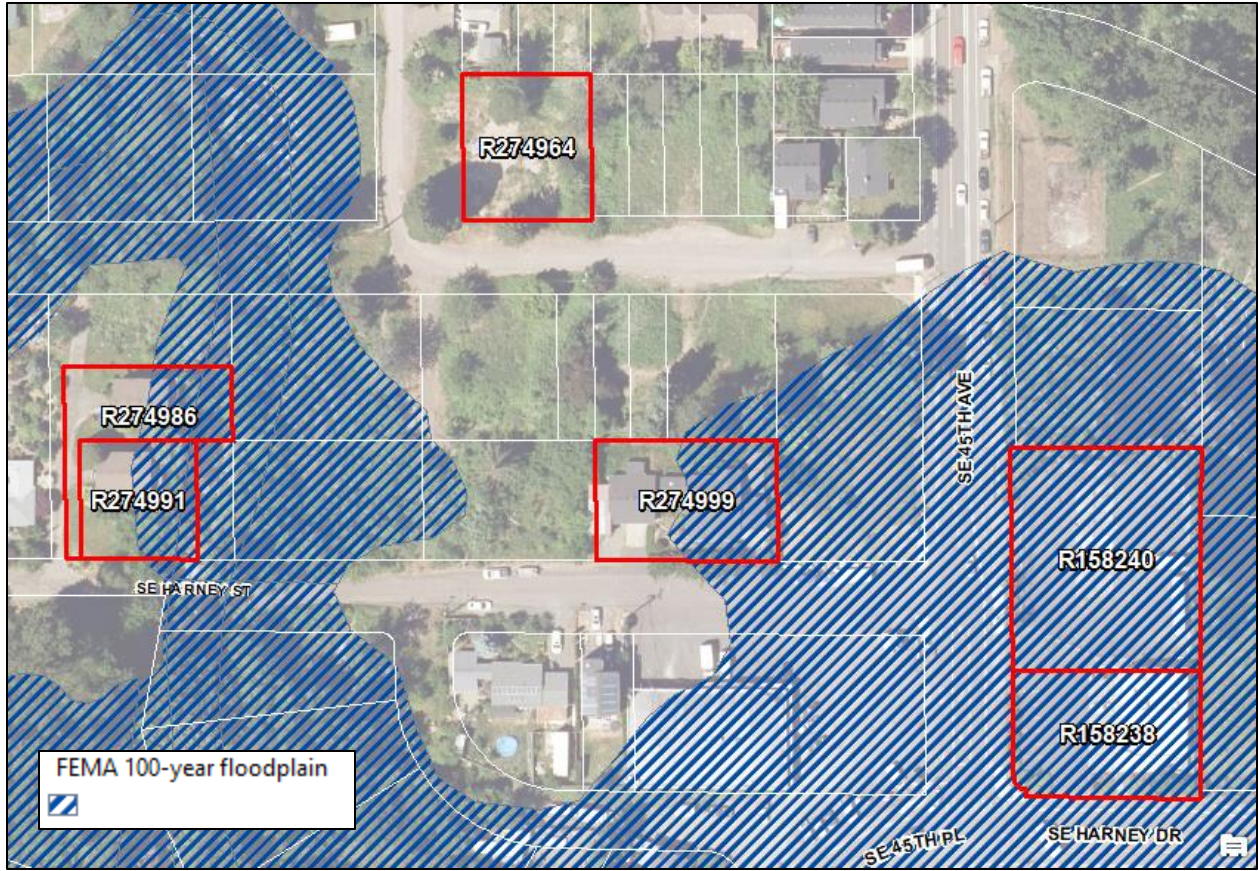
BES Rezoning Requests – Oxbow parcels - Current zoning

<u>R number</u>	<u>Zoning</u>	<u>Ezone</u>	<u>Floodplain</u>	<u>Land Area</u>	<u>Notes</u>
R158238	CE	p	yes	0.26 acres (11,225 sq ft)	
R158240	CE	p	yes	0.45 acres (19,764 sq ft)	
R274964	R5	none	no	0.20 acres (8,800 sq ft)	
R274986	R5	p	partial	0.14 acres (6,192 sq ft)	
R274991	R5	c,p	partial	0.14 acres (6,000 sq ft)	
R274999	R5	p	partial	0.24 acres (10,304 sq ft)	



BES Rezoning Requests – Oxbow parcels – Environmental overlay zones

<u>R number</u>	<u>Zoning</u>	<u>Ezone</u>	<u>Floodplain</u>	<u>Land Area</u>	<u>Notes</u>
R158238	CE	p	yes	0.26 acres (11,225 sq ft)	
R158240	CE	p	yes	0.45 acres (19,764 sq ft)	
R274964	R5	none	no	0.20 acres (8,800 sq ft)	
R274986	R5	p	partial	0.14 acres (6,192 sq ft)	
R274991	R5	c,p	partial	0.14 acres (6,000 sq ft)	
R274999	R5	p	partial	0.24 acres (10,304 sq ft)	



BES Rezoning Requests – Oxbow parcels – FEMA 100-year floodplain

<u>R number</u>	<u>Zoning</u>	<u>Ezone</u>	<u>Floodplain</u>	<u>Land Area</u>	<u>Notes</u>
R158238	CE	p	yes	0.26 acres (11,225 sq ft)	
R158240	CE	p	yes	0.45 acres (19,764 sq ft)	
R274964	R5	none	no	0.20 acres (8,800 sq ft)	
R274986	R5	p	partial	0.14 acres (6,192 sq ft)	
R274991	R5	c,p	partial	0.14 acres (6,000 sq ft)	
R274999	R5	p	partial	0.24 acres (10,304 sq ft)	