

Portland Urban Forest Plan



Agenda

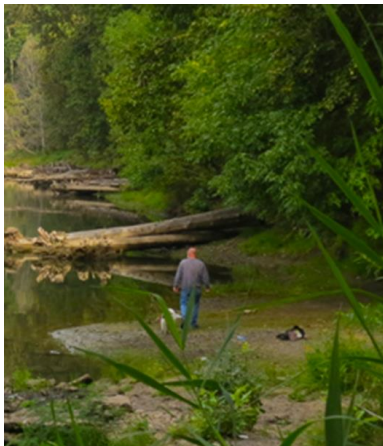
- What is the urban forest and why does it matter?
- What is the Portland Urban Forest Plan?
- How are we creating the plan?
- Discussion



What is the Urban Forest?

Every tree in Portland is part of the urban forest!

Trees in parks • Trees in yards • Trees near rivers or natural areas • Trees in street planting strips



Why are we here?

Trees clean our air

Trees purify our air by removing pollutants like carbon monoxide, ozone, and particulate matter. These harmful substances can lead to stroke, heart disease, and respiratory issues like asthma.



Trees provide habitat

Trees provide food and shelter for animals and pollinators. Over 100 species of migratory birds and other important wildlife rely on Portland's urban forest.



Trees keep us cool

Trees cool people and urban areas by shading buildings and pavement, lowering surface and air temperatures, and releasing cooling water vapors, like an air conditioner.



Trees store carbon

Trees take carbon dioxide from the air and store carbon in their wood, leaves, and roots. This process helps reduce climate change and can help cool our planet.



Trees improve our health

Trees improve our physical and mental health, and neighborhood aesthetics. Trees promote active living and can make our streets and outdoor spaces more inviting and safe.

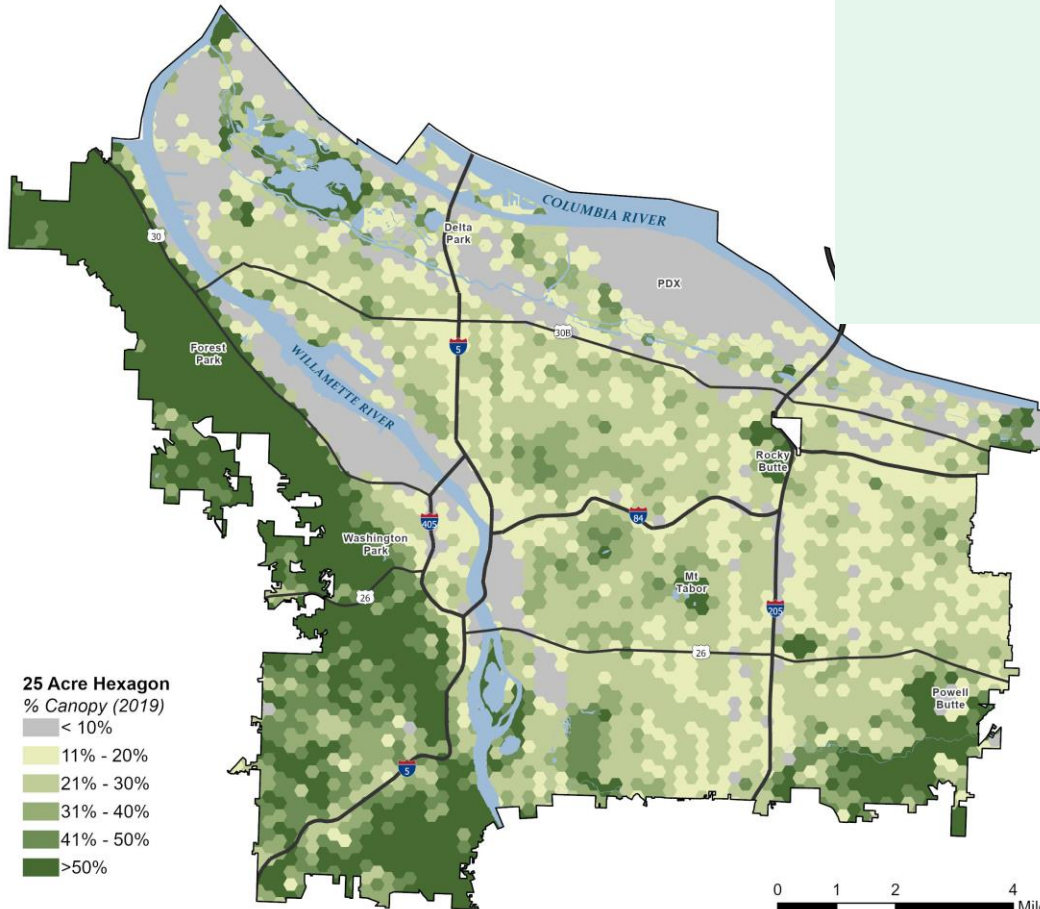
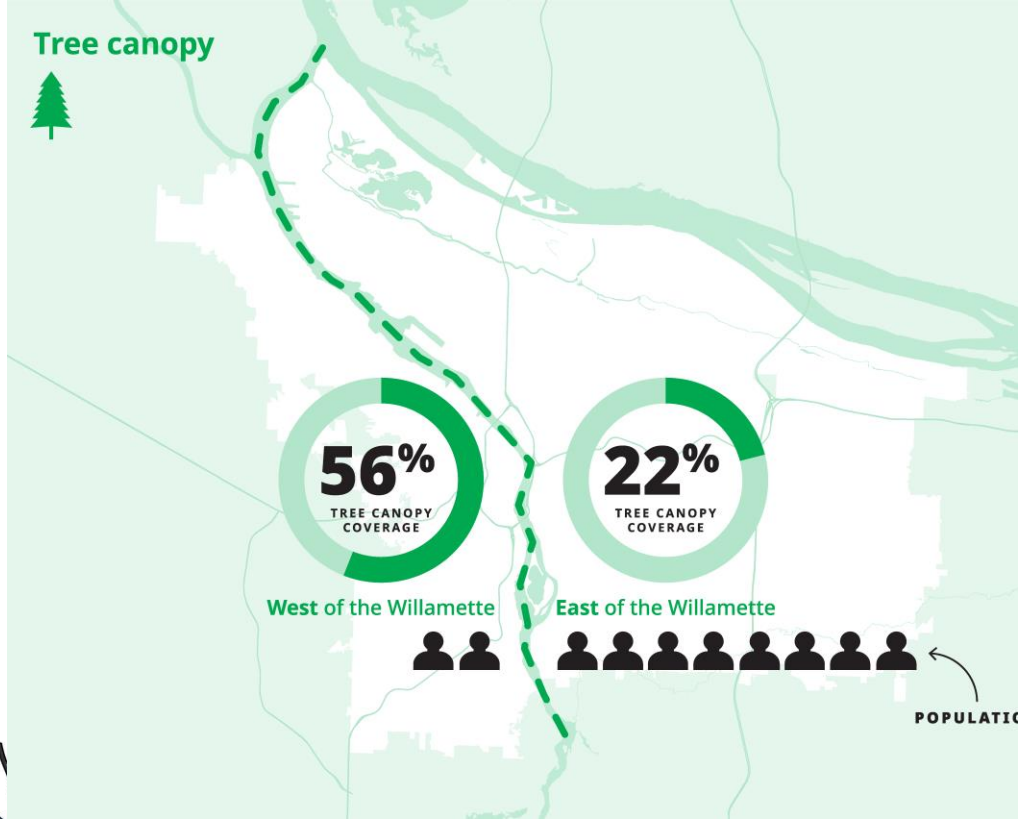


Trees clean our water & reduce flooding

Trees and soil help capture, filter, and slow down water and pollutants that flow into our streets and waterways after it rains. These services improve our water quality and reduce flooding.



Why are we here?



We want to grow our urban forest equitably

What is the Portland Urban Forest Plan?



10-year roadmap for preserving, planting, and caring for trees equitably and sustainably



Goals, actions, and priorities to guide City management activities and decisions



How are we creating this plan?

Fall 2023 -
Spring 2024

Spring - Fall 2024

Fall 2024 -
Spring 2025



PHASE 1

Listen & Learn

**Assess Current
Conditions**

PHASE 2

Change the Future

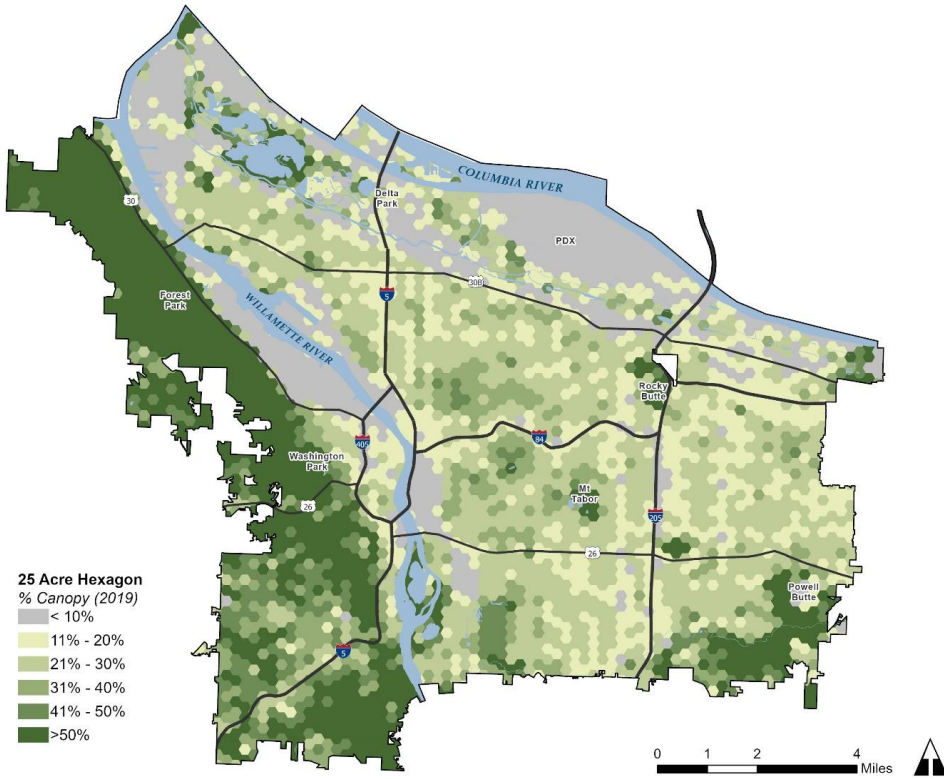
**Create
Recommendations**

PHASE 3

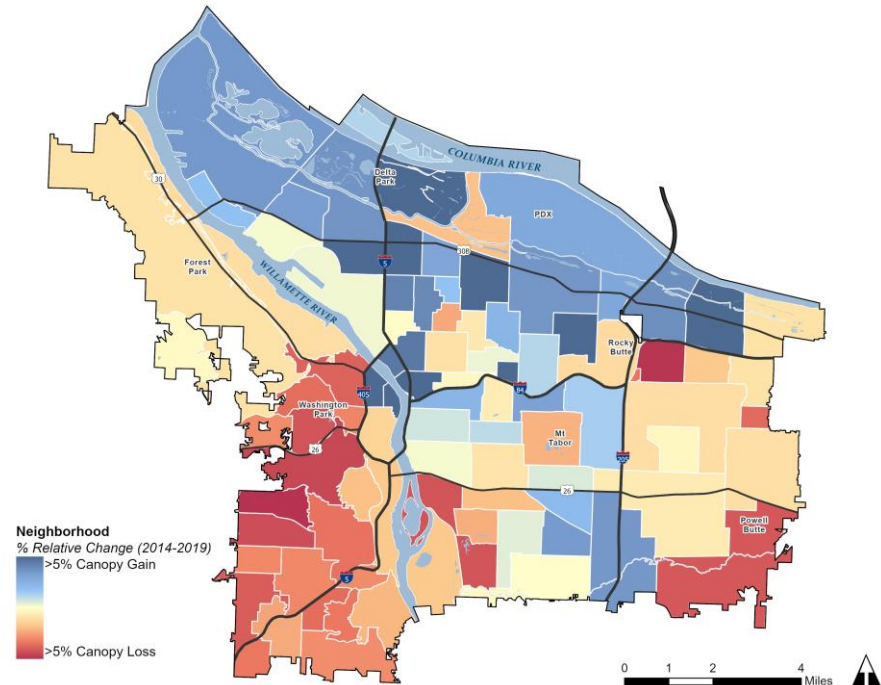
Develop the Roadmap

**Document the
Process**

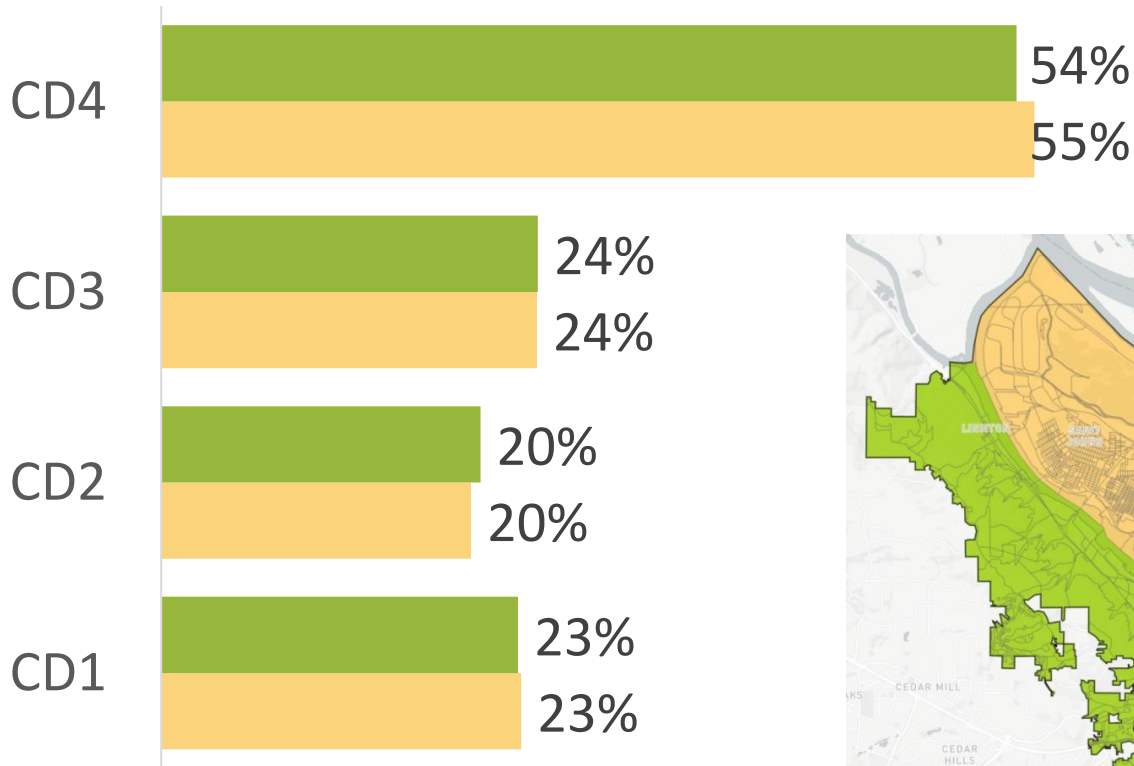
Canopy Coverage



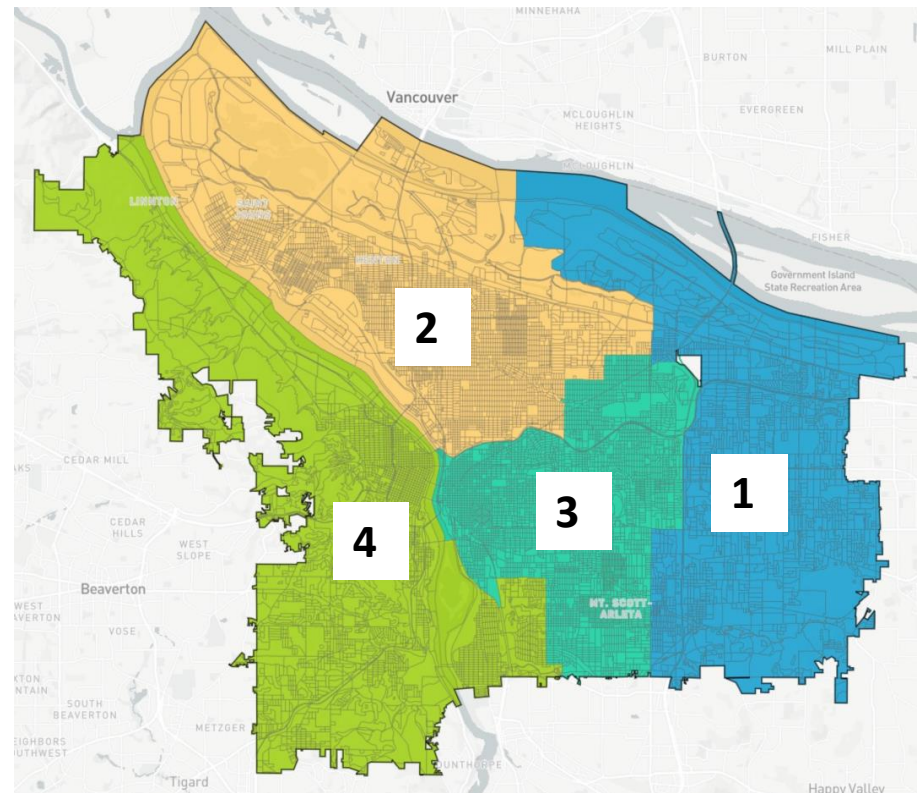
Canopy Change



Canopy Cover by Council District



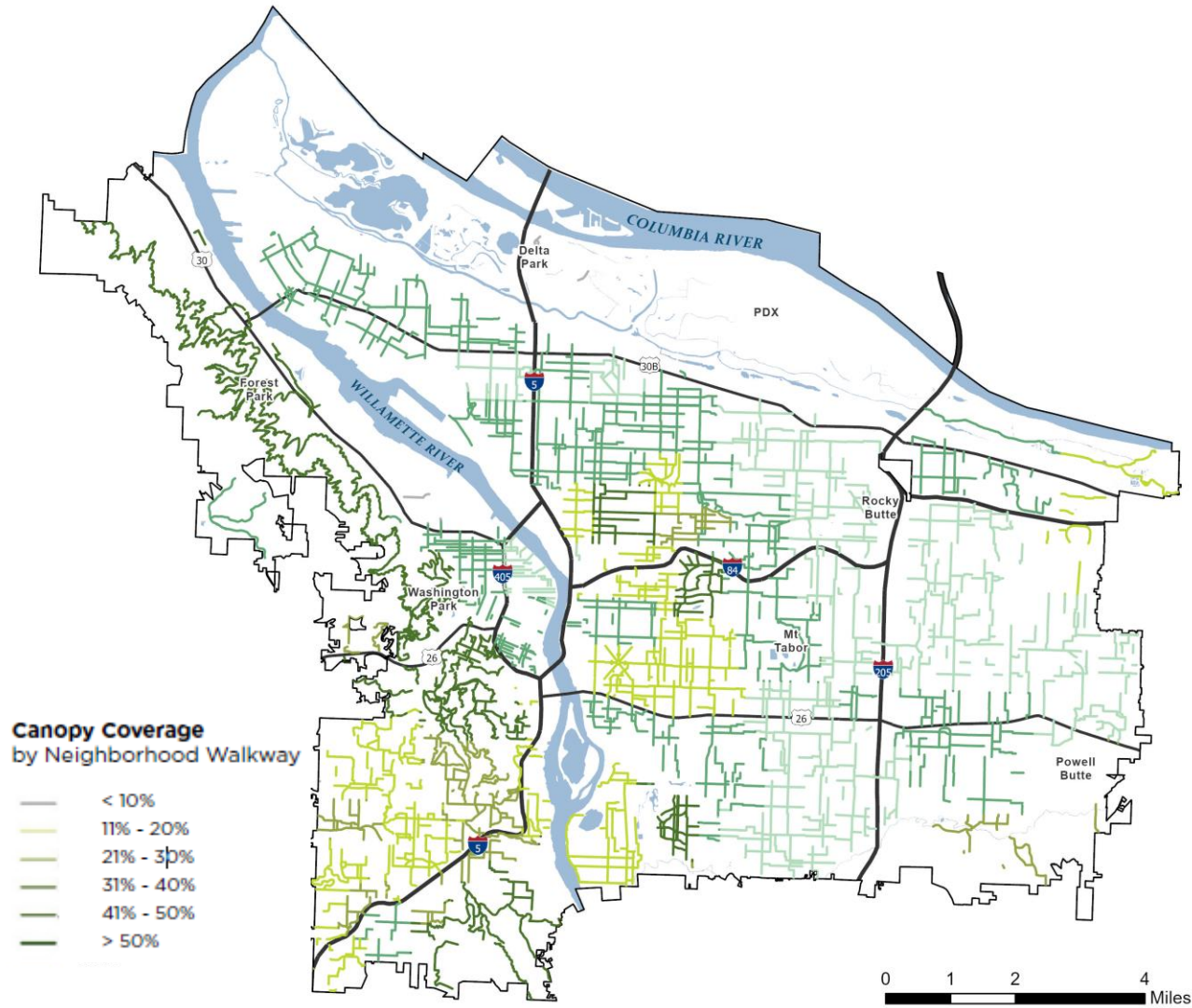
■ 2019 Canopy Percent
■ 2014 Canopy Percent



Transportation: Neighborhood Walkways (2019)

Citywide, canopy cover is 35%* along Neighborhood Walkways, compared to 24% for all streets

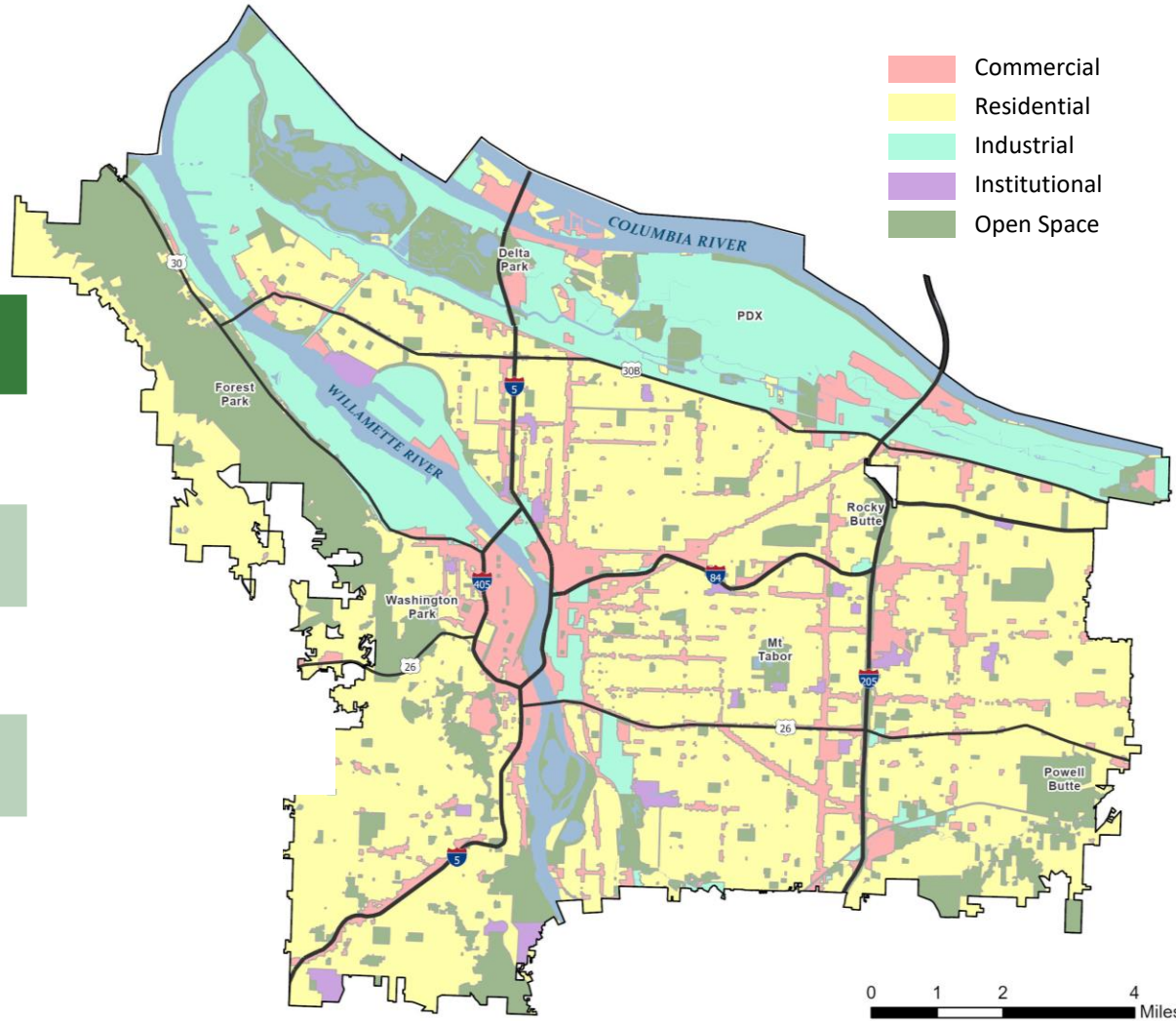
On average, 30%* of Neighborhood Walkways are covered by tree canopy.



*Includes Forest Park

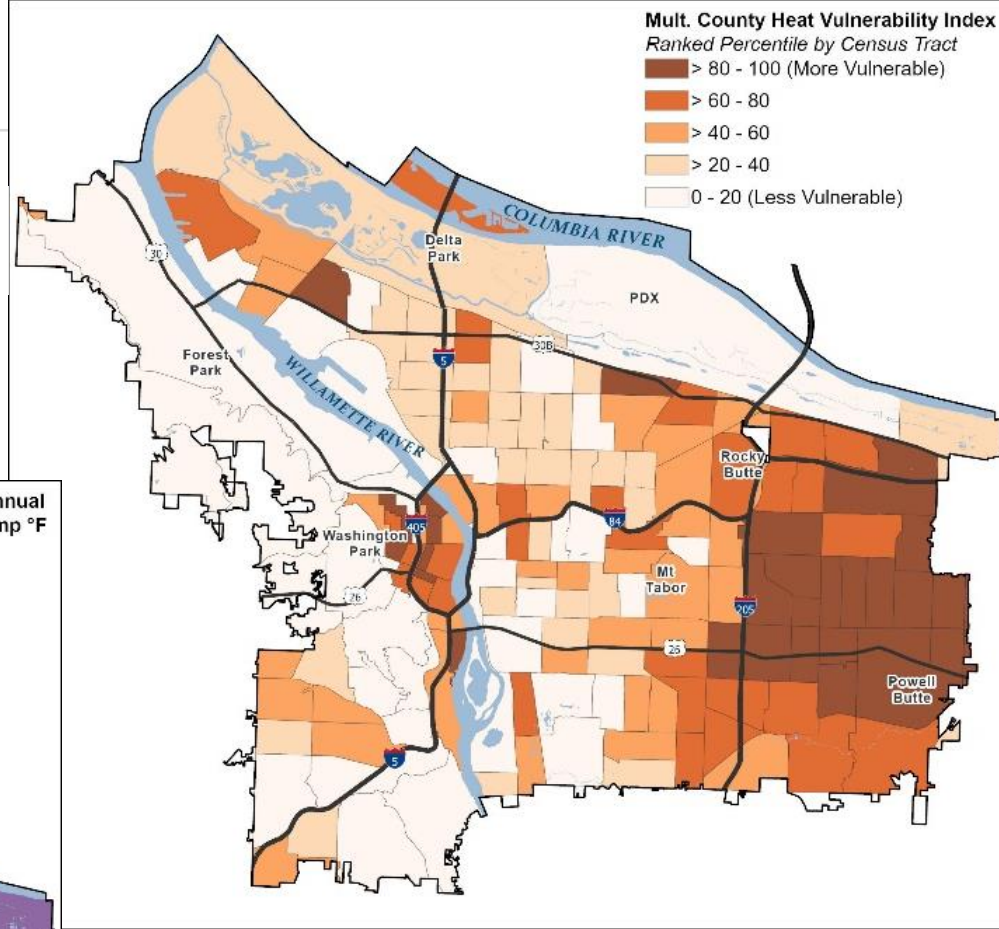
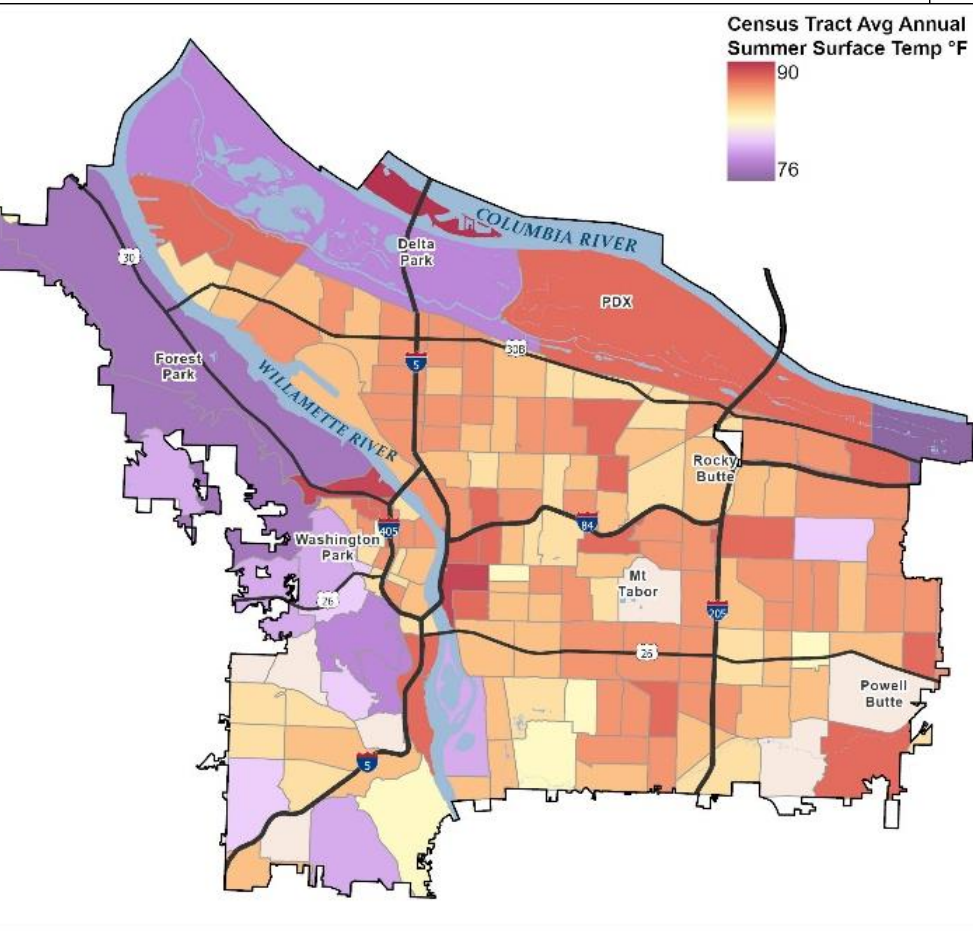
Land Use

Land Use	2019
Open Space	64.3%
Institutional	30.3%
Industrial	8.1%
Commercial	12.7%
Residential	33.1%



Source of Canopy Data: Oregon Metro Regional Land Information System

Heat and Heat Vulnerability



How are we creating the plan?

- Seeking guidance from 3 advisory committees
- Meeting with City advisory committees (like you)
- Speaking with the public
- Centering underserved communities



Community Engagement Activities

Spring 2024

Summer

Fall 2024 – Winter 2025

Focus Groups
Round 1

Focus Groups
Round 2

Open House

Open House

Survey

Draft Plan
Review

Discussions, Presentations, and Tabling



Tell us your vision for the future of trees and tree care!

Open house at
**McDaniel High
School on
April 24
5 to 7:30pm**

Survey is open
from
**March 25 to
May 2, 2024**

Visit www.Portland.gov/Trees/Portland-Urban-Forest-Plan



Questions?

What are your priorities for trees and urban forest management?



How do you think the City should preserve, plant, and care for trees equitably and sustainably?