

Vancouver/Schmeer

This aerial map shows the Portland Meadows area, including the PDX 22 site and the Portland Meadows site. A red line indicates a 'Future Public Street' running along the eastern boundary of the PDX 22 site. A blue circle with an arrow points to a location near the Columbia River, likely indicating a specific site or feature of interest.

N Vancouver/N Schmeer
Intersection

Existing Conditions

N Vancouver Way/N Schmeer RD

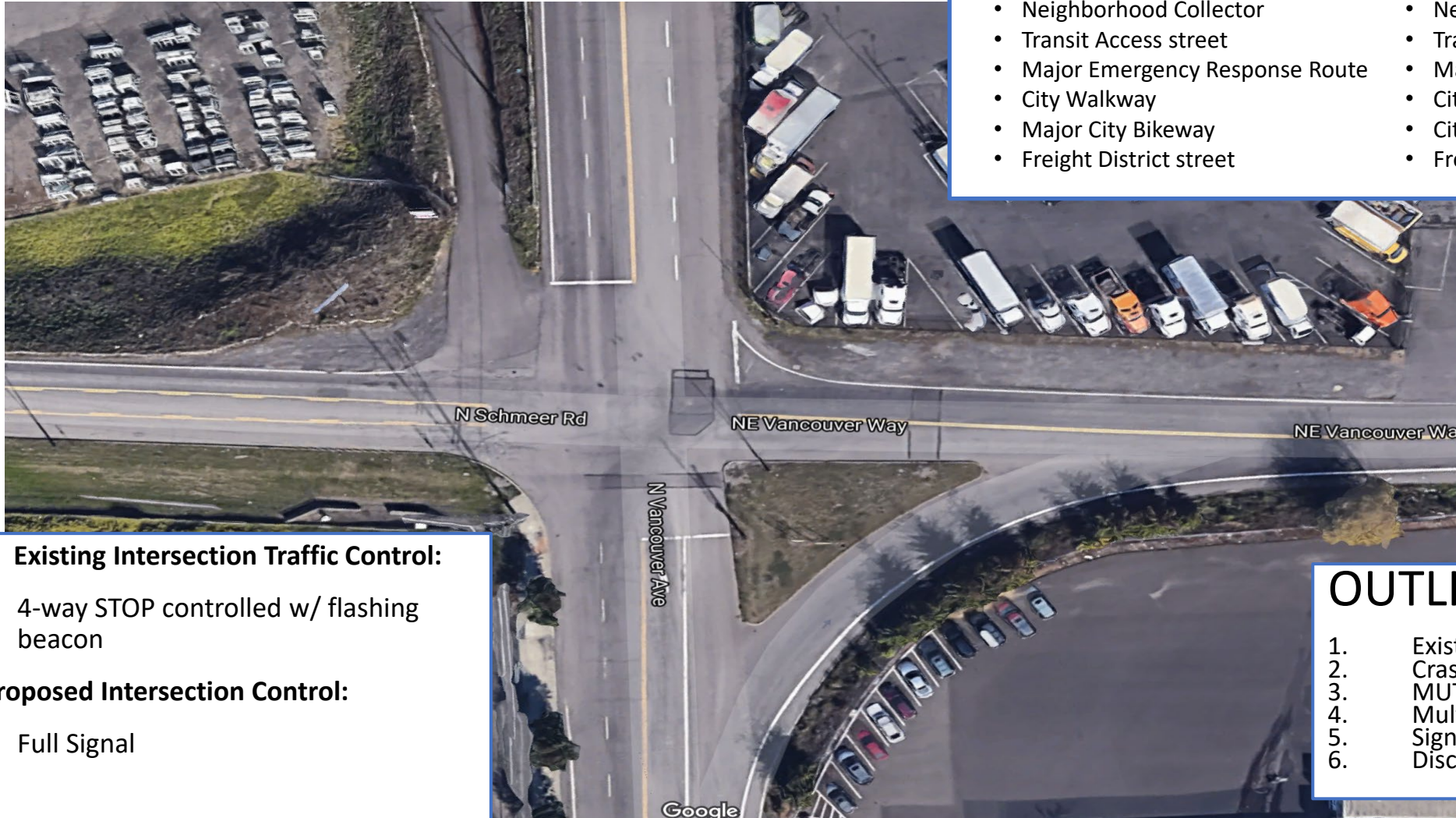
TSP Classifications:

N Vancouver Way (N/S)

- Neighborhood Collector
- Transit Access street
- Major Emergency Response Route
- City Walkway
- Major City Bikeway
- Freight District street

N Schmeer Rd (E/W)

- Neighborhood Collector
- Transit Access Street
- Major Emergency Response
- City Walkway
- City Bikeway
- Freight District Street



Existing Intersection Traffic Control:

- 4-way STOP controlled w/ flashing beacon

Proposed Intersection Control:

- Full Signal

Vancouver/Schmeer

OUTLINE:

1. Existing Conditions
2. Crash History
3. MUTCD Signal Warrants
4. Multi-Use Path Project
5. Signal & Striping Plans
6. Discussion

