



Darcelle XV Interim Plaza: Draft Design Development Update

Partners:

- Portland Parks & Recreation
- Portland Bureau of Transportation
- Downtown Portland Clean & Safe

Design:

- NNA Landscape Architecture
- IML Civil Engineering
- PSU Center for Public Interest Design





Darcelle XV Interim Plaza: Geography

- 100-ft by 200-ft block
- Formerly “O’Bryant Square”
- Located in Downtown Portland
- Edge of Burnside Triangle bordering SW Harvey Milk





Setting the Context for Interim Park

- Interim Park = ~ 3-5 years
- Design of Interim park is intended to be flexible to “beta test” different activities
- Funded by SDCs and One-time General Fund




The Lawn on D by Sasaki features colorful lighting fixtures




Modular trees within pop-up park furniture





 We are here.

Interim Project Timeline

When	What
Spring 2023	<ul style="list-style-type: none"> • “Back to Square One” series of events • Parking garage demolition begins.
Summer 2023	<ul style="list-style-type: none"> • Portland City Council renames O’Bryant Square “Darcelle XV Plaza”
Fall 2023	<ul style="list-style-type: none"> • PP&R solicits interest to activate and program Darcelle XV Plaza when it opens and enters tentative agreement with Downtown Portland Clean & Safe. • PP&R partners with PSU’s CPID and Poison Waters to hear ideas for the new park. • PP&R hires NNA Landscape Architecture to develop the interim park design.
 Winter 2023-24	<ul style="list-style-type: none"> • Public Engagement on interim park design. • Open House scheduled at 3-6 pm February 4, 2024 at 740 SW Washington St
Spring/Summer 2024	<ul style="list-style-type: none"> • Parking garage demolition ends; Construction for Interim Plaza will begin.
Spring/Summer 2025	<ul style="list-style-type: none"> • Darcelle XV Plaza is set to open to the public.



Public Engagement

- 1,000 + Portlanders engaged
- 6 interactive webinars attended by 500+
- Public Survey with ~400 responses
- 8 key stakeholder groups, 2 Open Houses
- 17 local design teams put forth design concepts
- Request for Information solicited interest from community partners to activate and program park
- CPID / Poison Waters series of interviews





What We Heard: Park Features

- Anchor space for revolving programming
- Elevated Stage
- Connection to Street Plazas
- Dog Park/Run
- Lunch spot with seating
- Shade/covering
- Honoring and Celebrating LGBTQ+ history
- Festive Site Lighting
- Trees

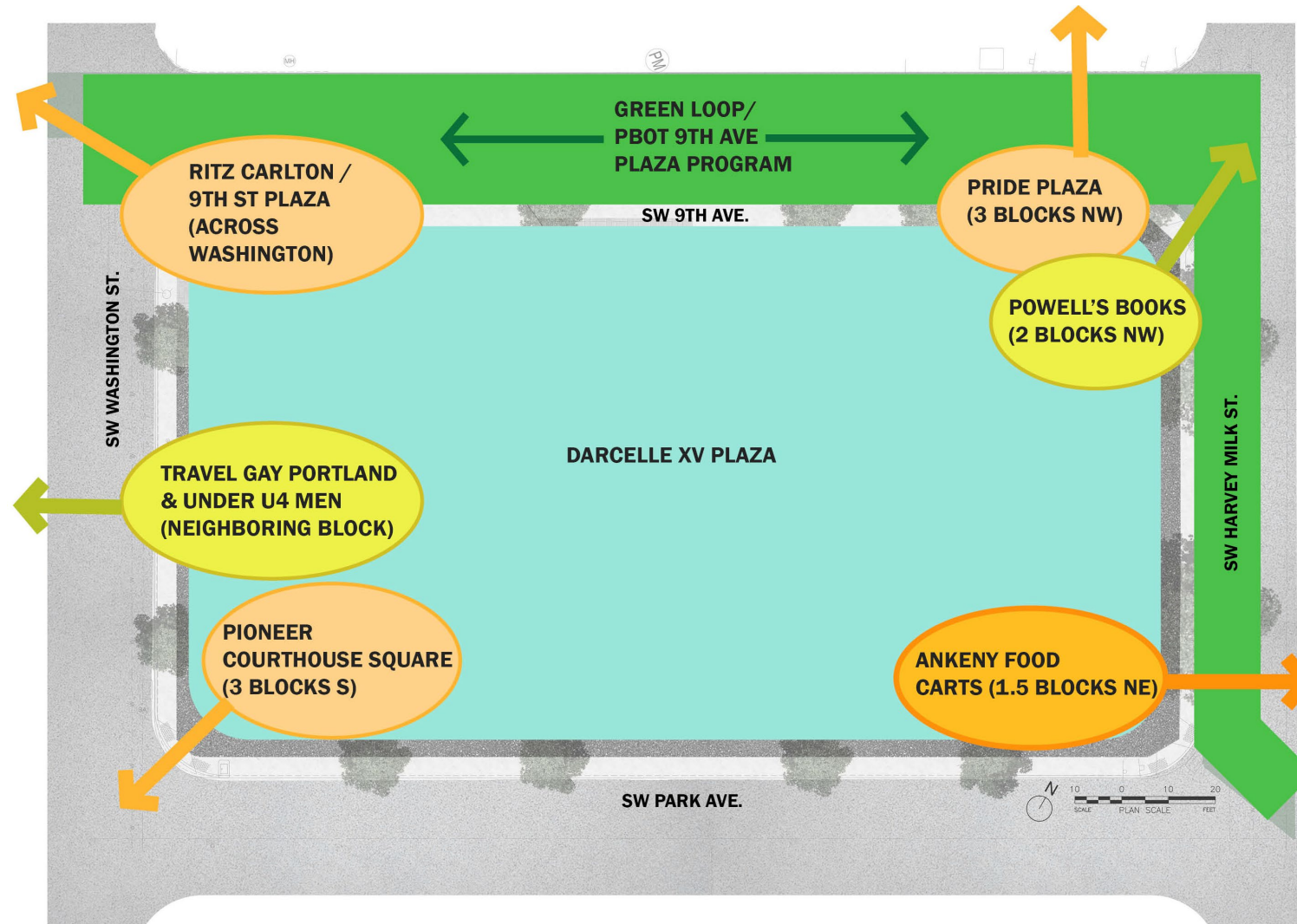




Darcelle XV Plaza (interim)

Context & Related Projects

- Green Loop
- Darcelle XV
Street Plaza
- Ritz Plaza
- Ankeny
Food Carts
- Harvey Milk





Darcelle XV
Plaza (interim)

Design
In progress

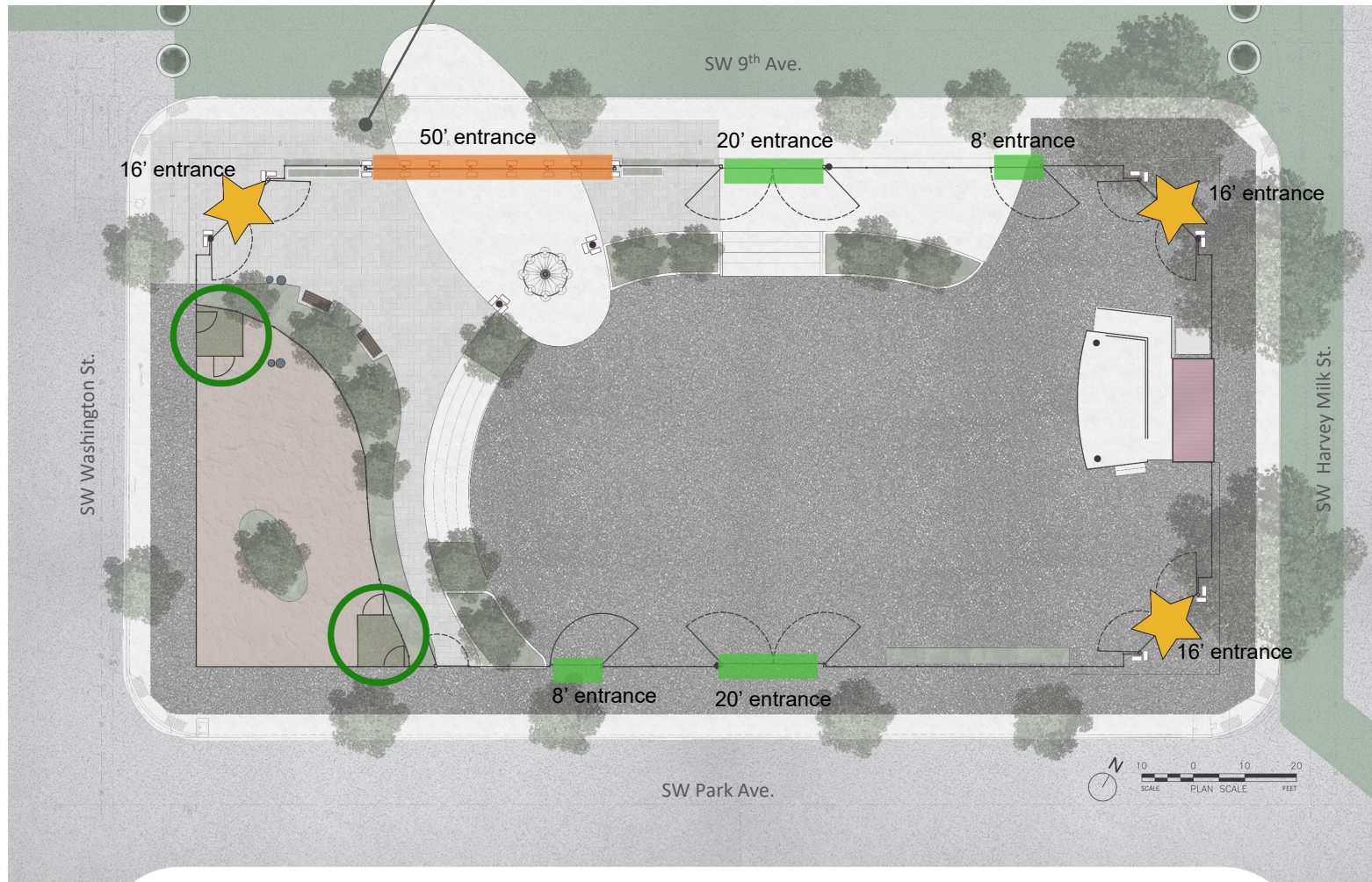
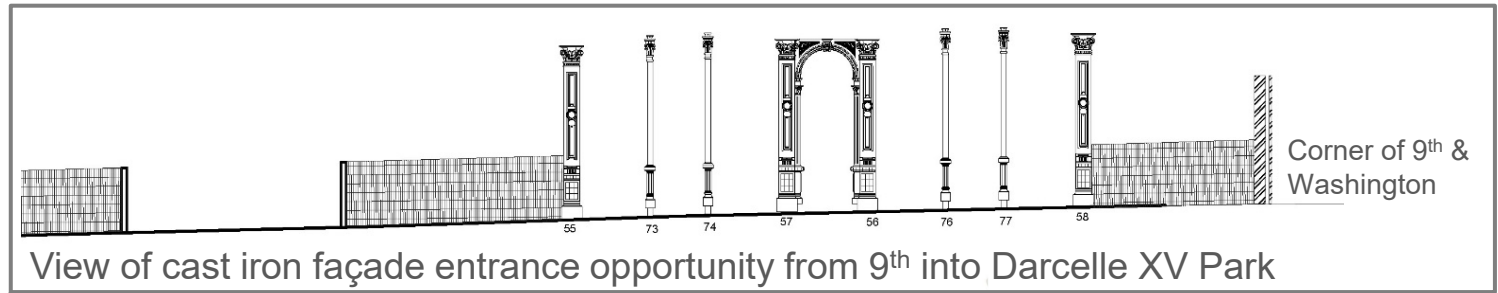




Darcelle XV Plaza (interim):

Perimeter

- Entry Gates at the corners
- Cast Iron Façade
- Additional gates on Park and 9th
- Vestibules at the dog parks
- 6' high perimeter fence



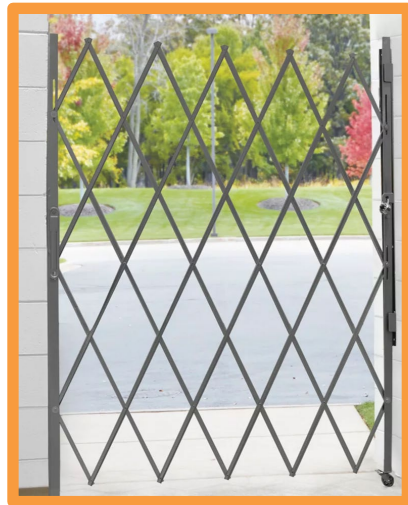
- Dramatic corner gateways
- Safe dog park Entrances
- Functional Swing Gates
- Façade entrance with accordion gates



Darcelle XV Plaza (interim):

Fencing

- High visibility options
- Swing Gates and Accordion Gates

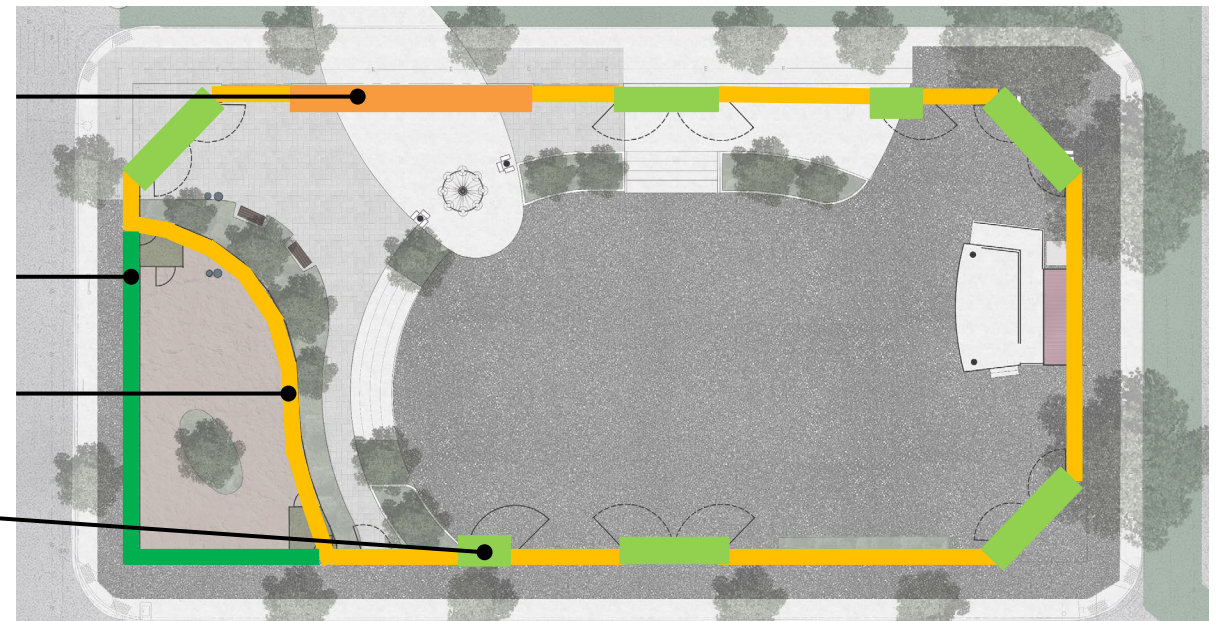


Accordion Gates Attached to Façade supports

5' Dog Park Fence

6' Exterior Fence

Swing Gates





Darcelle XV Plaza (interim):

Cast Iron

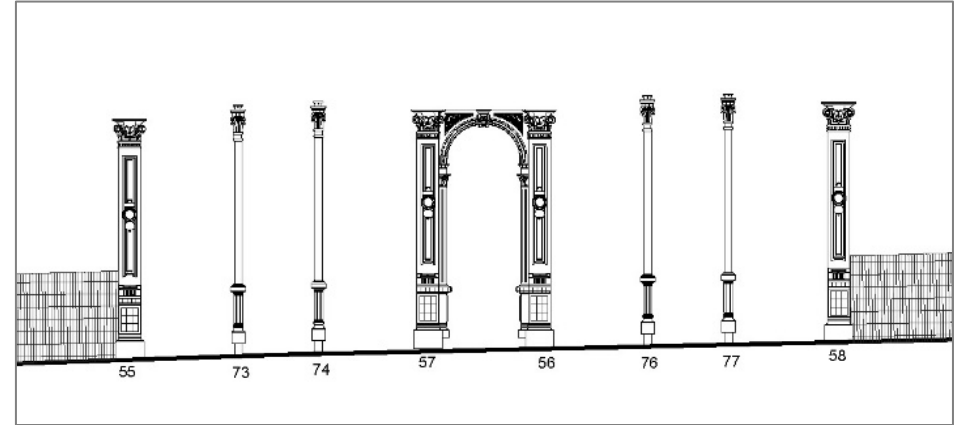
- Historic ties to Portland and LGBTQ community
- Opportunity to use a full façade
- Additional pieces for dramatic gateways



Cast Iron installation on Natio



Cast Iron remnants



Opportunity for a façade entrance along 9th into Darcelle XV Park



Cast Iron attachments



Cast Iron ● opportunities



PORTLAND PARKS & RECREATIONSM

Healthy Parks, Healthy Portland

**Darcelle XV
Plaza (interim)**

Perimeter

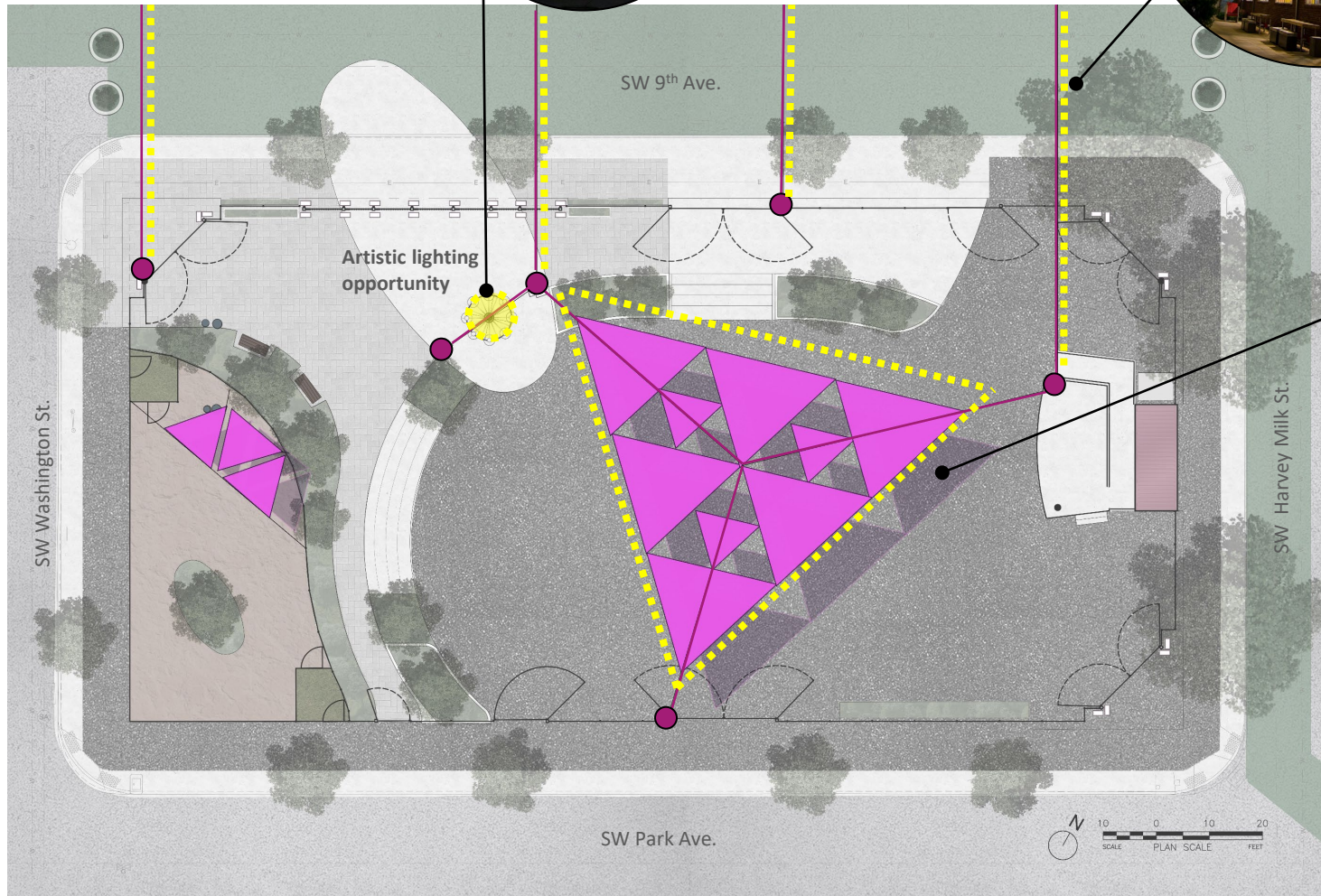




Darcelle XV Plaza (interim)

Overhead

- Overhead Shade Sails
- String lights
- Artistic lighting
- Mast Lighting
- Lighting across 9th Ave. will be consistent with the overhead lighting at block 216



- Multipurpose Utility Posts
- Utility Wires
- ▲ Shade Sails
- String Lights

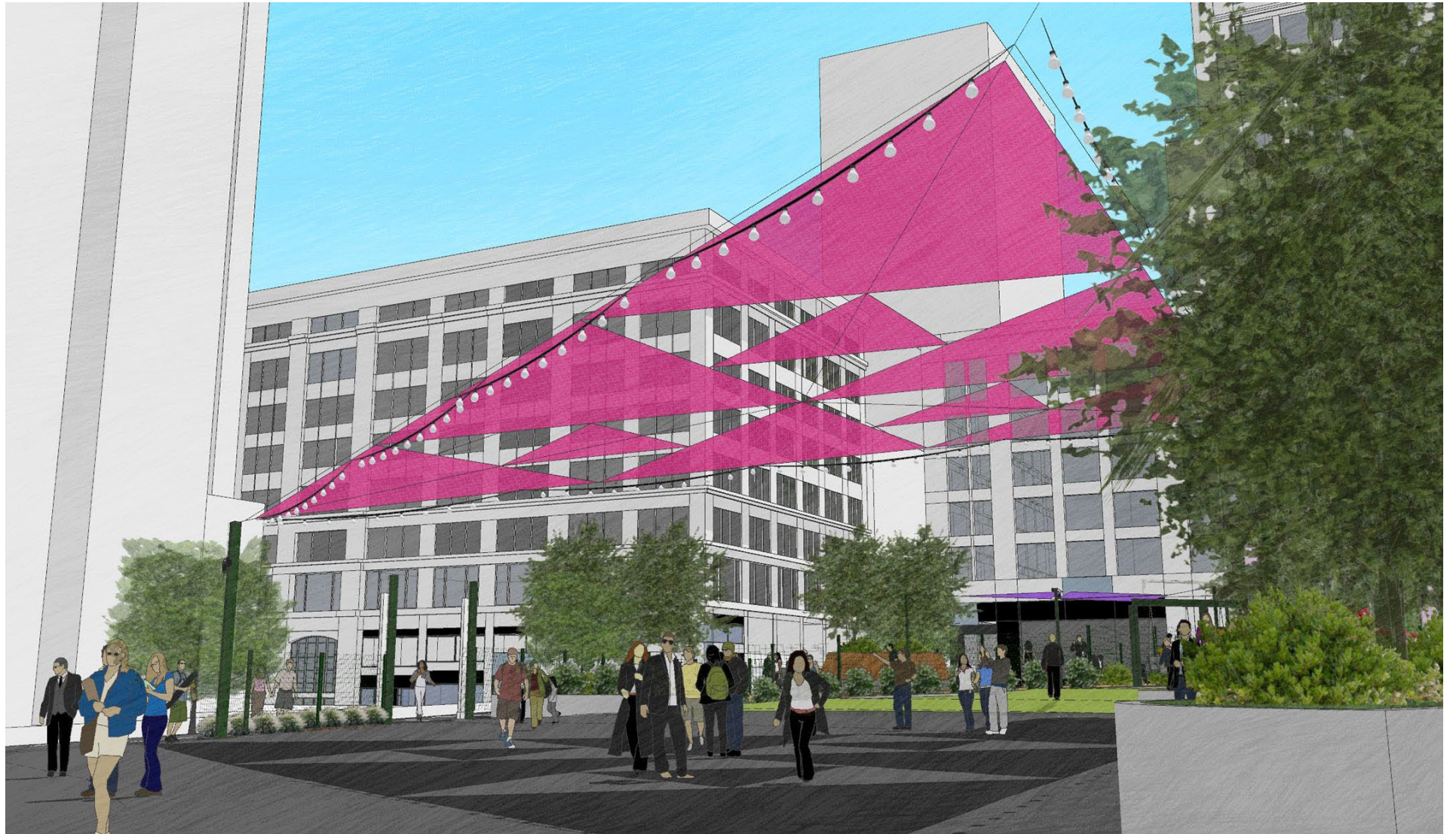


PORTLAND PARKS & RECREATIONSM

Healthy Parks, Healthy Portland

**Darcelle XV
Plaza (interim)**

Overhead

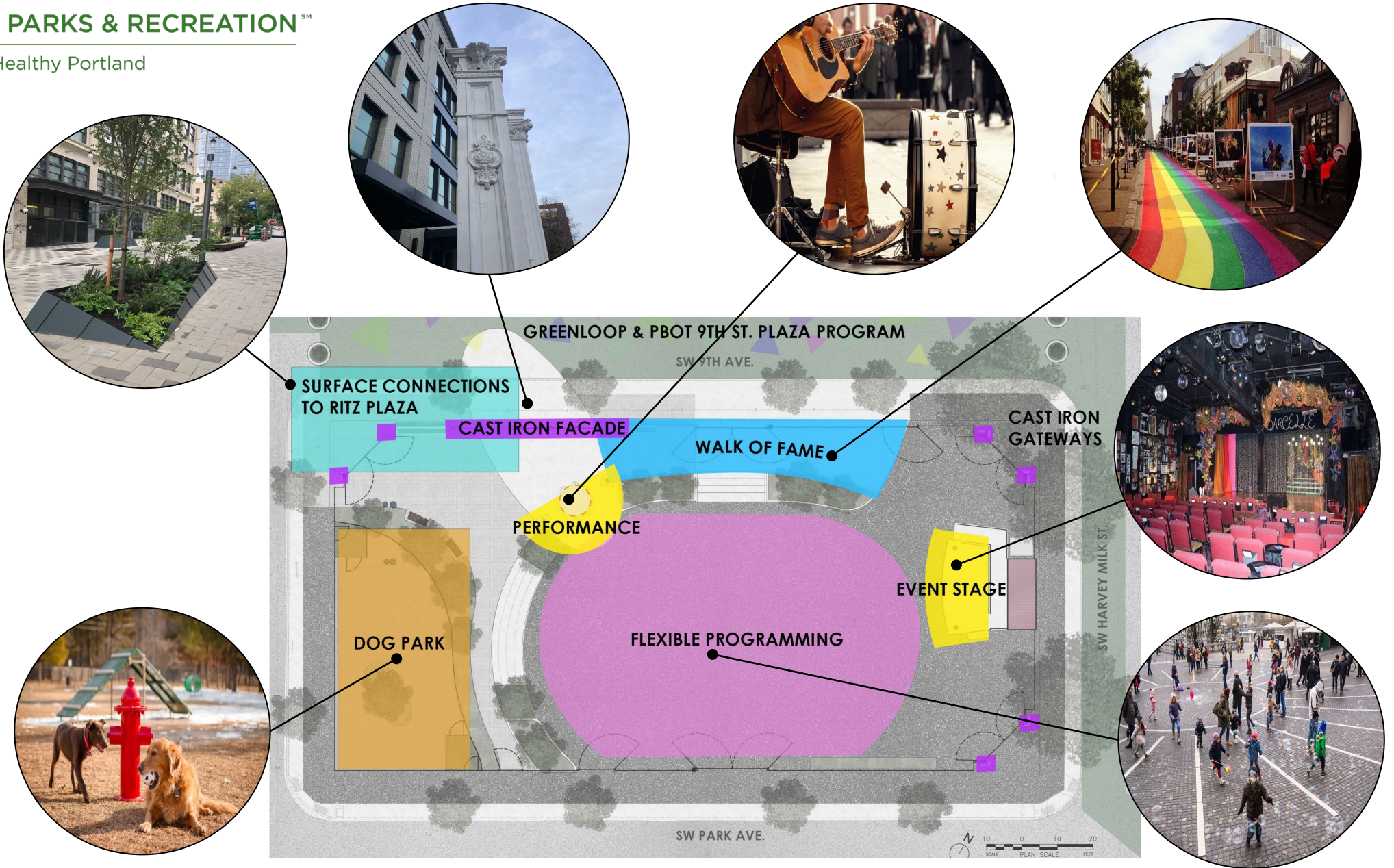




Darcelle XV Plaza (interim)

Placemaking

- Art Opportunity
- Cast iron
- Performance spaces
- Ground plane decoration
- Exuberant planting





PORTLAND PARKS & RECREATION™

Healthy Parks, Healthy Portland

**Darcelle XV
Plaza (interim)**

Placemaking





Darcelle XV Plaza (interim)

Park Activities

- Event stage
- Storage
- Performance area and walk of fame
- Dog park



Business Support & Development

- **Annual Downtown Business Survey** – robust set of data
DowntownPortland.org/research-reports/business-census/
- **Semi-Annual Pedestrian Counts** - now supported through Placer.ai
DowntownPortland.org/2022pedcounts/
- **Retail Vacancy Reports** – Downtown/Old Town
- **Downtown Retail Council** – support, educate, and help inform the marketing of Downtown



Business Support & Development

- **Visit Downtown PDX – Program**
 - Promotes Downtown to Portlanders & suburbs
 - 74k Instagram followers
 - 120K Facebook followers
 - Much of the Marketing funded by Downtown Marketing Initiative
- **Holiday Pop-Up Shops**
 - 7 Shops, featuring 80+ small businesses
 - Priority to minority and woman owned businesses
 - Goal to move these business to leases
- **Sidewalk Ambassadors / Mobile Kiosks**
 - Provide tourism information with two mobile kiosks (6 FTE during summer, 2 FTE year-round)
 - Partners: Travel Portland, Worksystems, New Avenues for Youth
- **Downtown Retail Advocate** (retention & recruitment of Downtown businesses)
 - Quarterly Vacancy Reports, worked with Pop-Up Shops to move them into leases



Holiday Pop-Up: PDX Urban Wineries, One Shop, Sixteen Local Urban Wine Makers, Hundreds of Shoppers in Directors Park.



New Programming and Services

- **New Community Health Outreach Worker Program (CHOW)** to provide direct services to our most vulnerable community members with our new vendor- Bybee Lakes Hope Center
- **24/7 Public Safety Services** to support late-day business operations and our residents
- **District-wide Security Assessment of Private Property** in partnership with PPB
- **New electric bikes/equipment** to increase cleaning response time, support vendor staff
- **Continued/improved safety programming** and support to retain our existing businesses
- **Additional Retail Marketing and Promotion** as well as business recruitment



CLEAN & SAFE:

- [downtowncleansafepdx](https://www.facebook.com/downtowncleansafepdx)
- [Downtown-Portland-clean-safe](https://www.linkedin.com/company/downtown-portland-clean-safe)
- [downtown_cleansafe](https://www.instagram.com/downtown_cleansafe)

VISIT DOWNTOWN:

- [downtownportland](https://www.facebook.com/downtownportland)
- [indowntownpdx](https://twitter.com/indowntownpdx)
- [downtownPDX](https://www.instagram.com/downtownPDX)





PORTLAND PARKS & RECREATIONSM

Healthy Parks, Healthy Portland



Questions and Comments

Ken Rumbaugh

he/him/his

Senior Community Engagement Coordinator

Community Relations

Portland Parks & Recreation

Ken.Rumbaugh@portlandoregon.gov

<https://www.portland.gov/parks/construction/darcelle-xv-plaza-project>