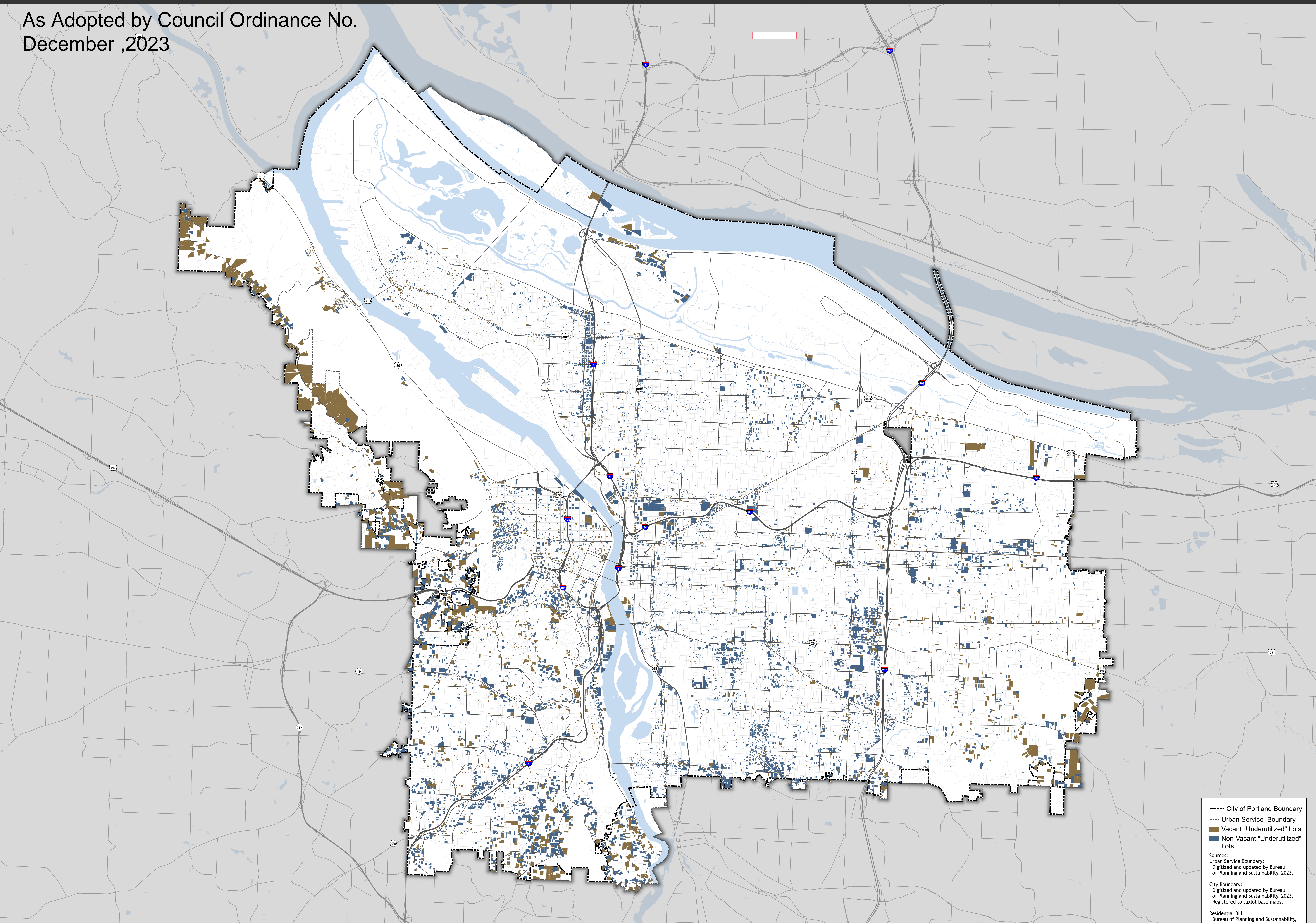
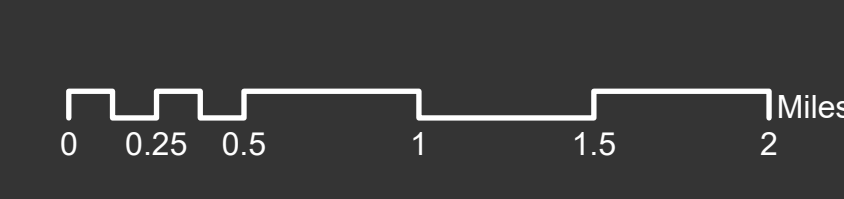


As Adopted by Council Ordinance No.
December ,2023



- - - City of Portland Boundary
 - - - Urban Service Boundary
 ■ Vacant "Underutilized" Lots
 ■ Non-Vacant "Underutilized" Lots

Sources:
 Urban Service Boundary:
 Digitized and updated by Bureau of Planning and Sustainability, 2023.
 City Boundary:
 Digitized and updated by Bureau of Planning and Sustainability, 2023.
 Registered to taxlot base maps.
 Residential BLI:
 Bureau of Planning and Sustainability, 2020.



THE BUREAU OF
**PLANNING &
 SUSTAINABILITY**

The information on this map was derived from digital data bases on the City of Portland, Bureau of Planning and Sustainability GIS. Care was taken in the creation of this map but it is provided "as is". The City of Portland cannot accept any responsibility for errors, omissions, or positional accuracy, and therefore, there are no warranties which accompany this product. However, notification of any errors will be appreciated.
 This work was supported in part by a periodic review grant from the Oregon Department of Land Conservation and Development.