

working for clean rivers



## Rate Study Recommendations Presentation

**Dawn Uchiyama** | Director | Bureau of Environmental Services

**Anthony Martin** | Financial Planning Manager | Bureau of Environmental Services

**Deb Galardi** | Galardi Rothstein Group

**Eric Rothstein** | Galardi Rothstein Group

**November 29, 2023**



ENVIRONMENTAL SERVICES  
CITY OF PORTLAND

Mingus Mapps, Commissioner  
Dawn Uchiyama, Director



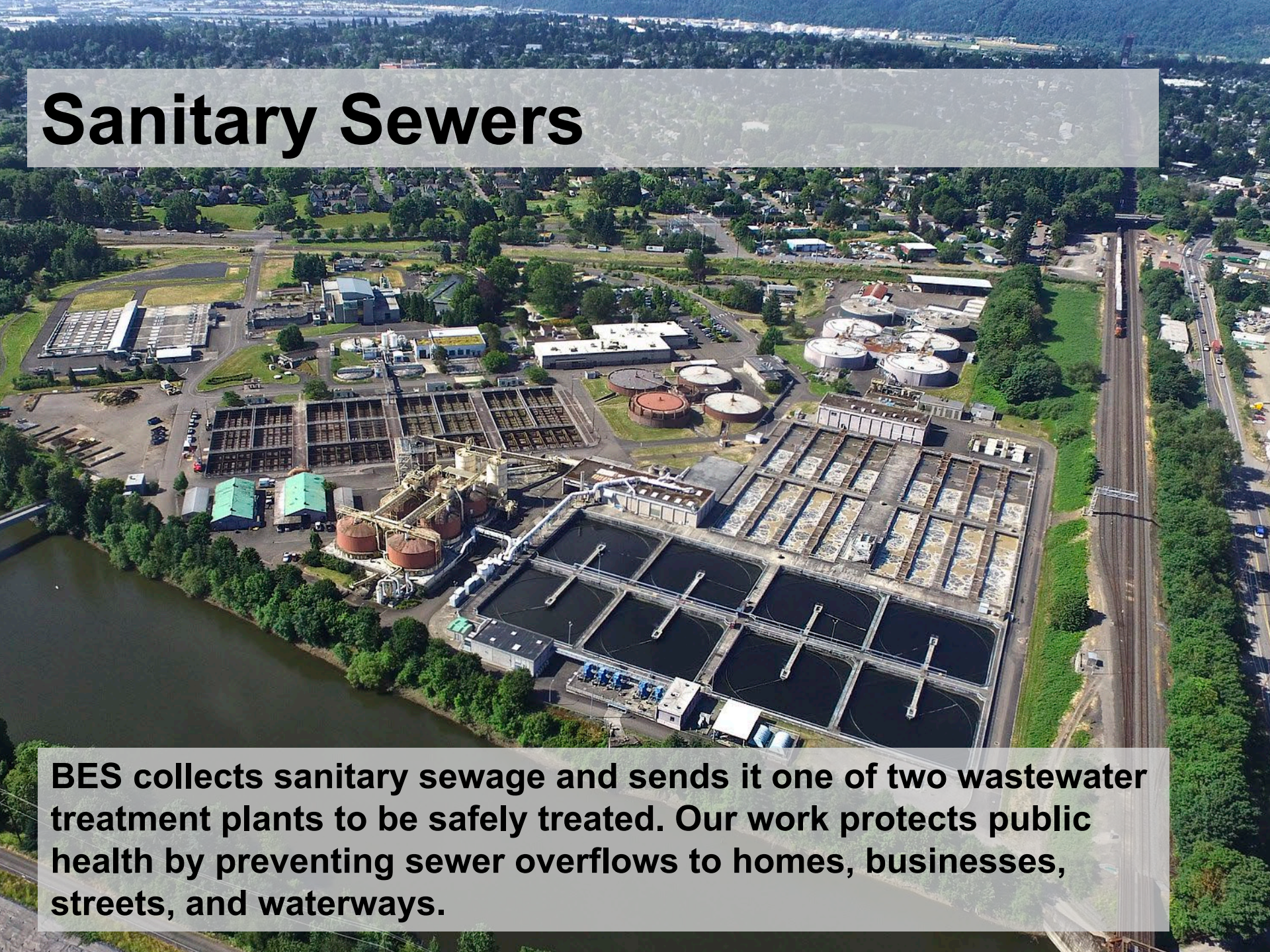
# Our Mission

---

Environmental Services manages Portland's wastewater and stormwater infrastructure to protect public health and the environment.



# Sanitary Sewers

An aerial photograph of a wastewater treatment plant. The facility is situated in a suburban area with houses and trees in the background. The plant itself consists of several large rectangular aeration basins, several circular clarifiers, and various industrial buildings and pipes. A road and a railway line are visible on the right side of the image. The sky is clear and blue.

**BES collects sanitary sewage and sends it one of two wastewater treatment plants to be safely treated. Our work protects public health by preventing sewer overflows to homes, businesses, streets, and waterways.**

# Stormwater = Rain



**BES stormwater infrastructure helps manage rain, control flooding, and hold floodwaters on City property, so streets and properties remain safe and dry. It also helps clean and treat stormwater before it gets to our rivers.**

# Essential Services

**Our work is supported by our ratepayers. Their support helps protect public health and keep our rivers clean.**



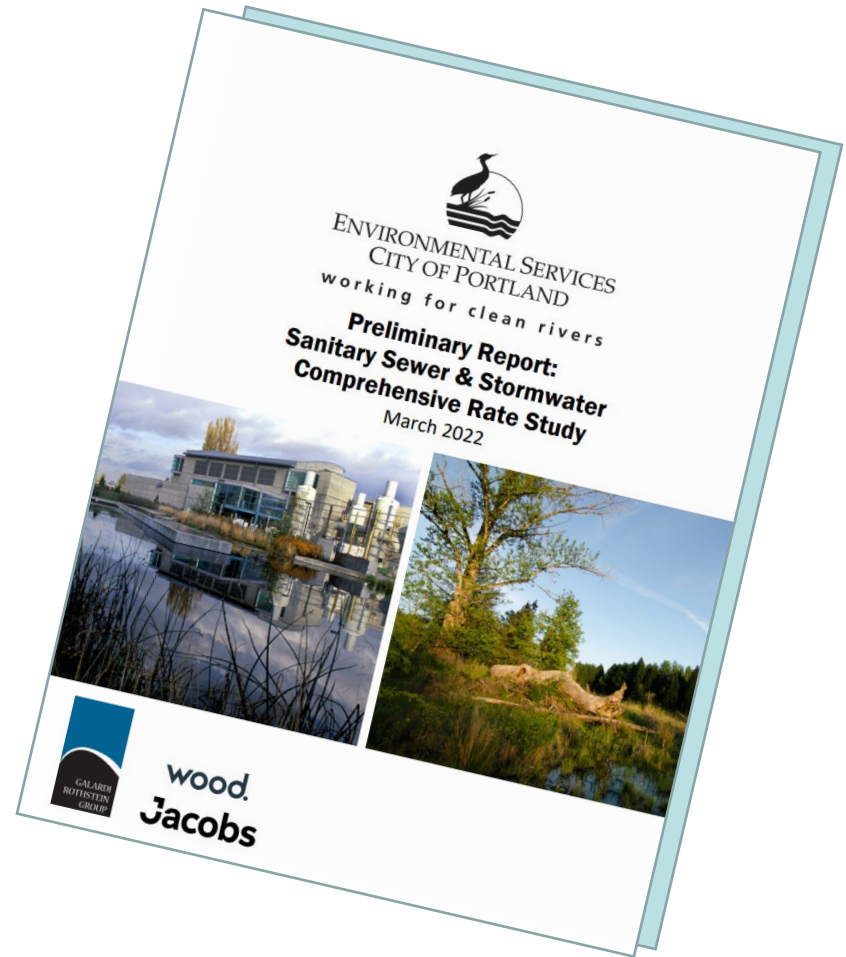
# What is a Rate Study?

- Recommends rate updates so rates are consistent with the cost to provide services
- Compares rates to peer utilities
- Rate studies are considered a best practice for utilities
- NOT a rate increase. Rate setting happens every May.



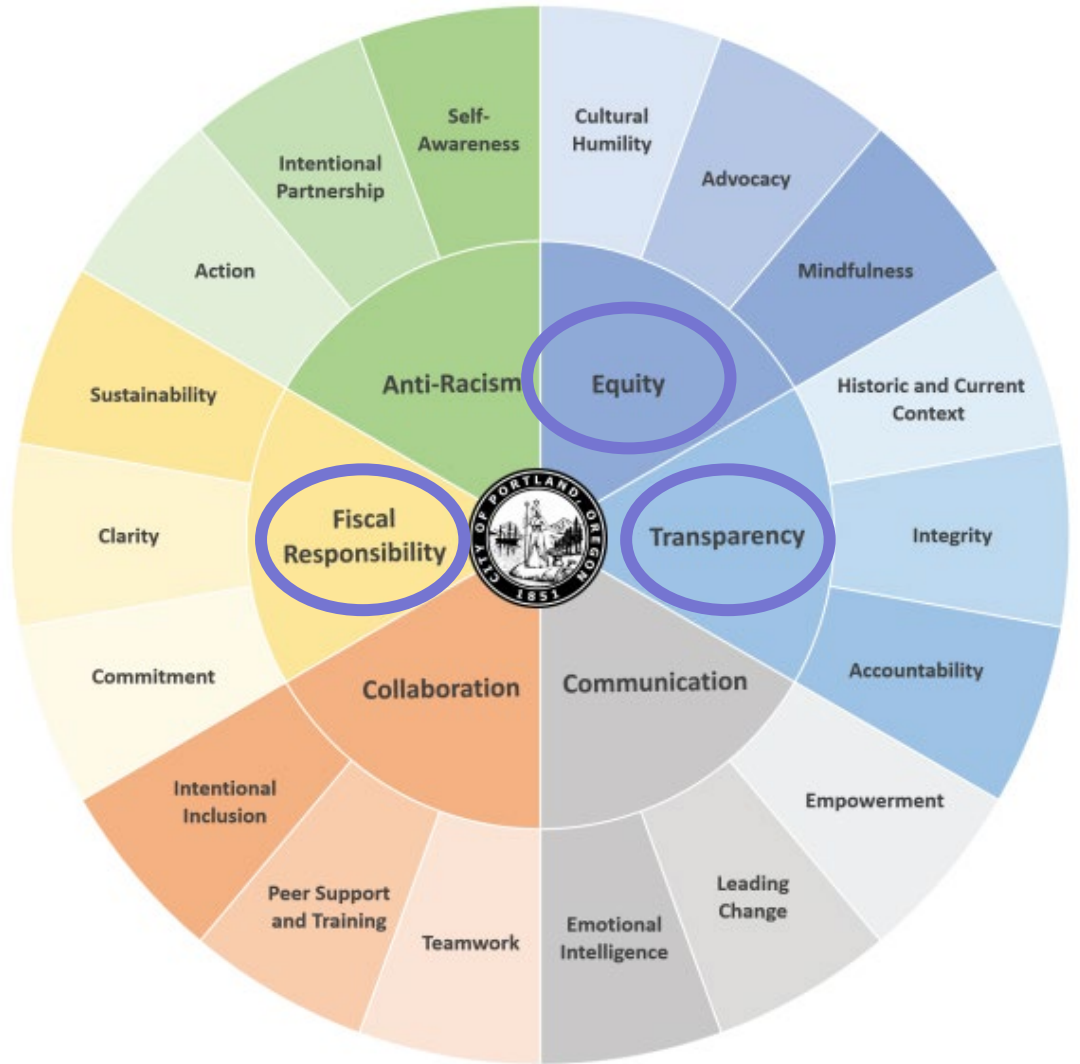
# Why Conduct a Rate Study?

- Council recommendation in 2018
- 18 years since last rate study
  - Big Pipe, STEP, major stormwater investments



# Rate Study Recommendations

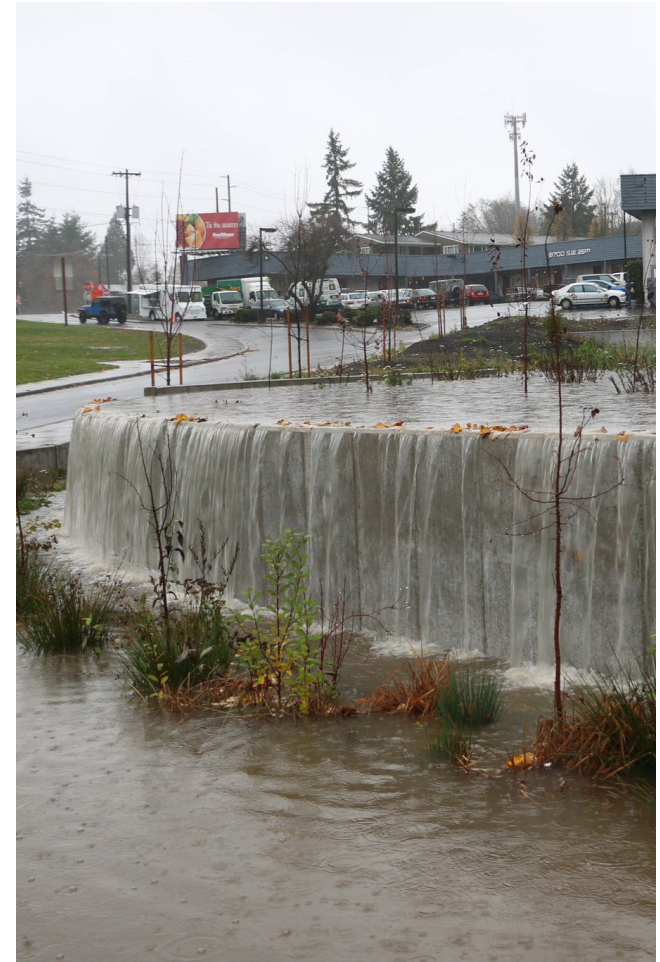
- Aligns with City Core Values





# What Did the Rate Study Recommend?

- BES has invested substantially in stormwater management over the last 20 years, and rates need to shift to reflect this change
- BES should more closely charge each customer based on the cost of service



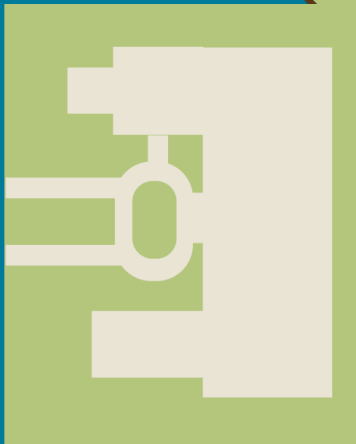
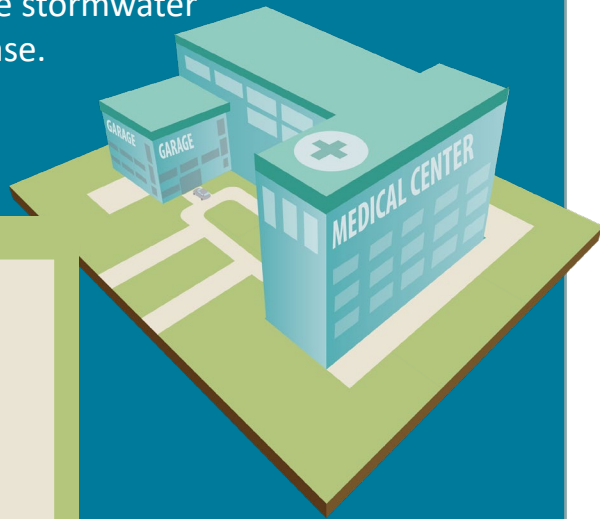


# Commercial and Industrial Impacts

# COMMERCIAL

## Medical Center

A typical medical center has a high sewer flow and large amount of impervious area. For this customer, sewer charges may decrease while stormwater charges may increase.

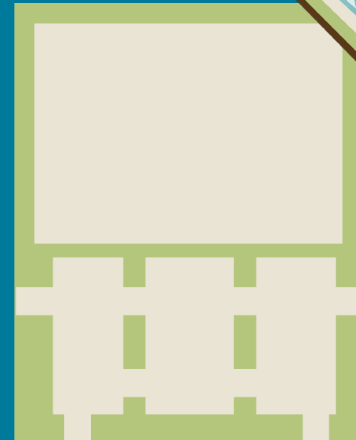
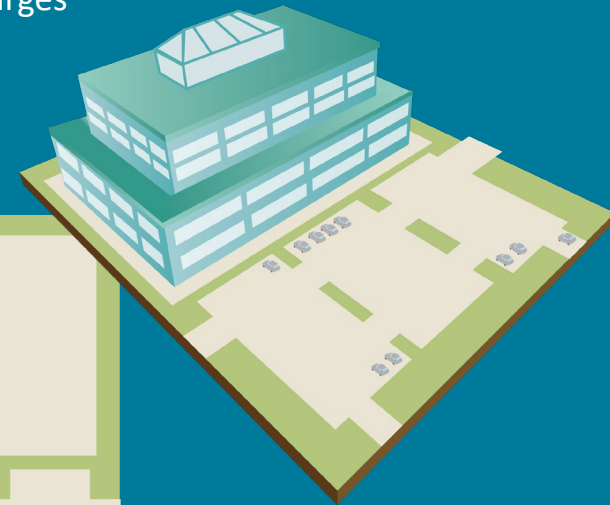


Impervious area

**This customer might pay 1% (about \$4,500) less than today.**

## Office Campus

A typical office campus has a moderate sewer flow and large amount of impervious area. For this customer, sewer charges may decrease while stormwater charges may increase.



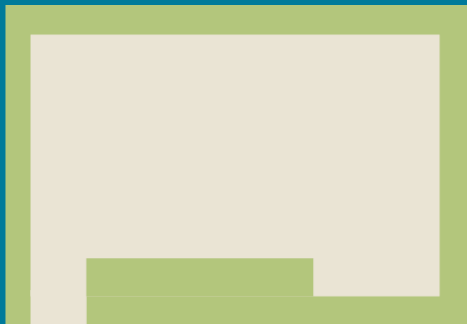
Impervious area

**This customer might pay 5% (about \$1,000) more than today.**

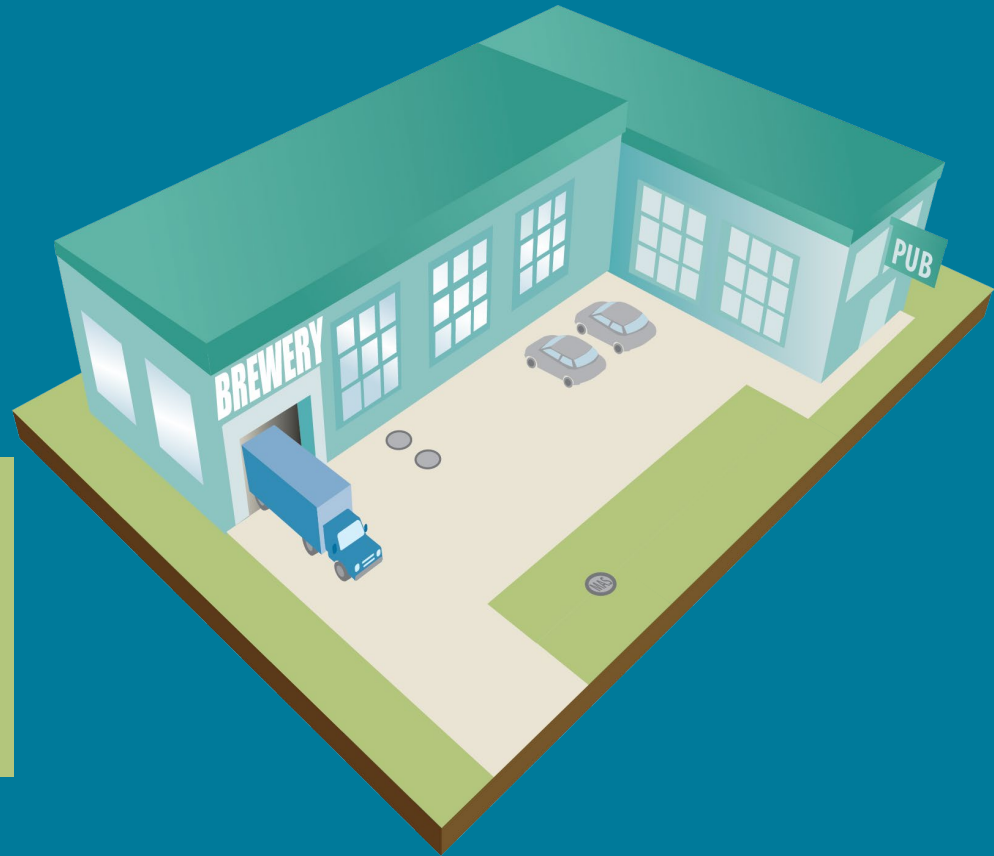
# INDUSTRIAL

## Brewery

A typical brewery pays extra-strength charges because of its highly concentrated wastewater. With new rate structure, this customer may see a large decrease in sewer charges.



Impervious area



**This customer might pay 9% (about \$400) less than today.**

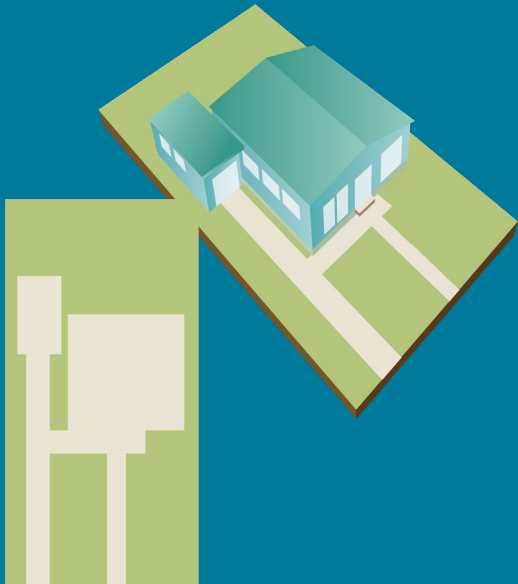
**Promote affordability for most residential customers**



# SINGLE FAMILY RESIDENTIAL TIERS

## Tier 1 Single Family

This customer has a modestly sized single dwelling unit (impervious area no greater than 1,600 SF) with average sewer flow.

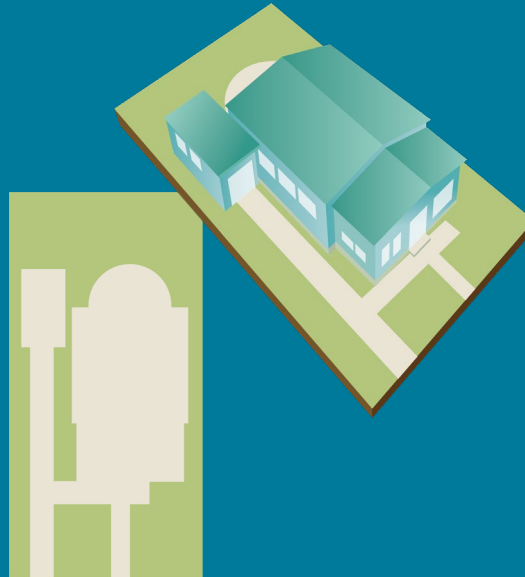


Impervious area

**This customer might pay 18% (about \$15) less than today.**

## Tier 2 Single Family

This customer has an average sized single dwelling unit (impervious area greater than 1,600 SF but less than 3,200 SF) with average sewer flow.

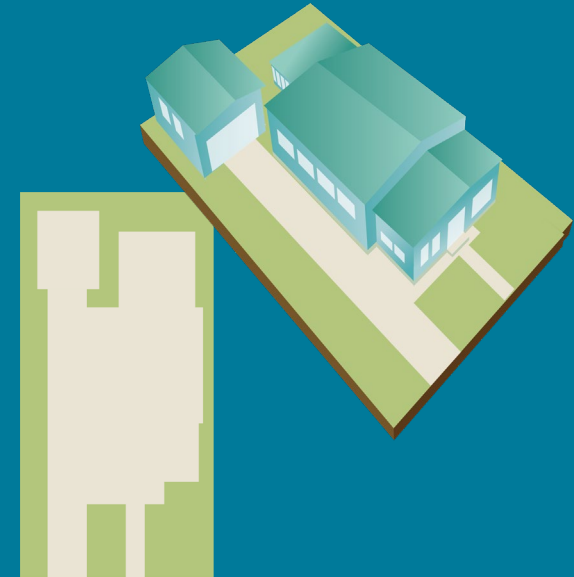


Impervious area

**This customer might pay 1% (about \$1) less than today.**

## Tier 3 Single Family

This customer has large sized single dwelling unit (impervious area greater than 3,200 SF) with average sewer flow.



Impervious area

**This customer might pay 16% (about \$13) more than today.**

# MULTIFAMILY RESIDENTIAL

## High Density

About 50 units, parking garage

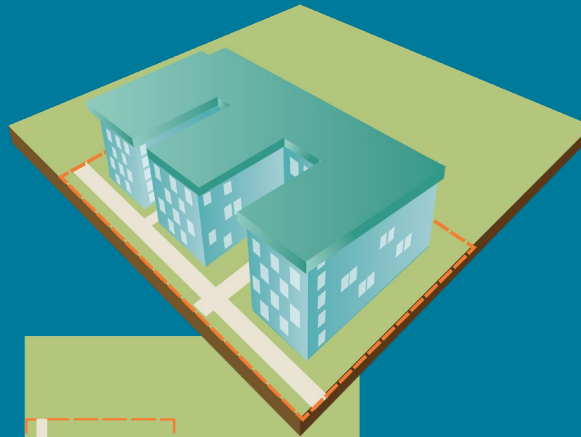


Impervious area  
Property line

This customer might pay 1%  
(about \$20) more than today.

## Medium Density

About 50 units, no parking

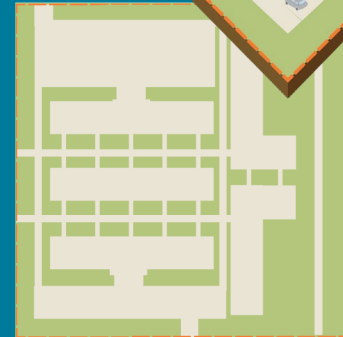
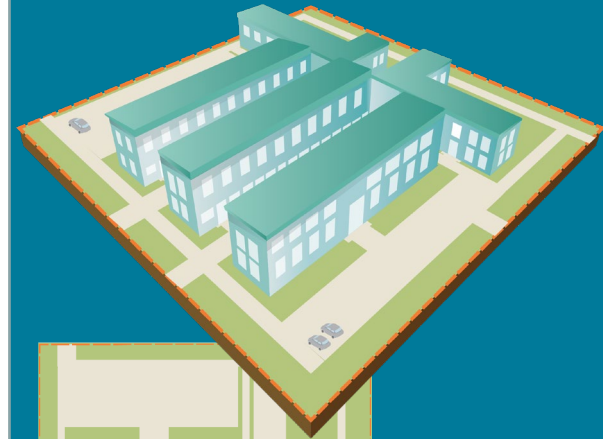


Impervious area  
Property line

This customer might pay 1%  
(about \$25) less than today.

## Low Density

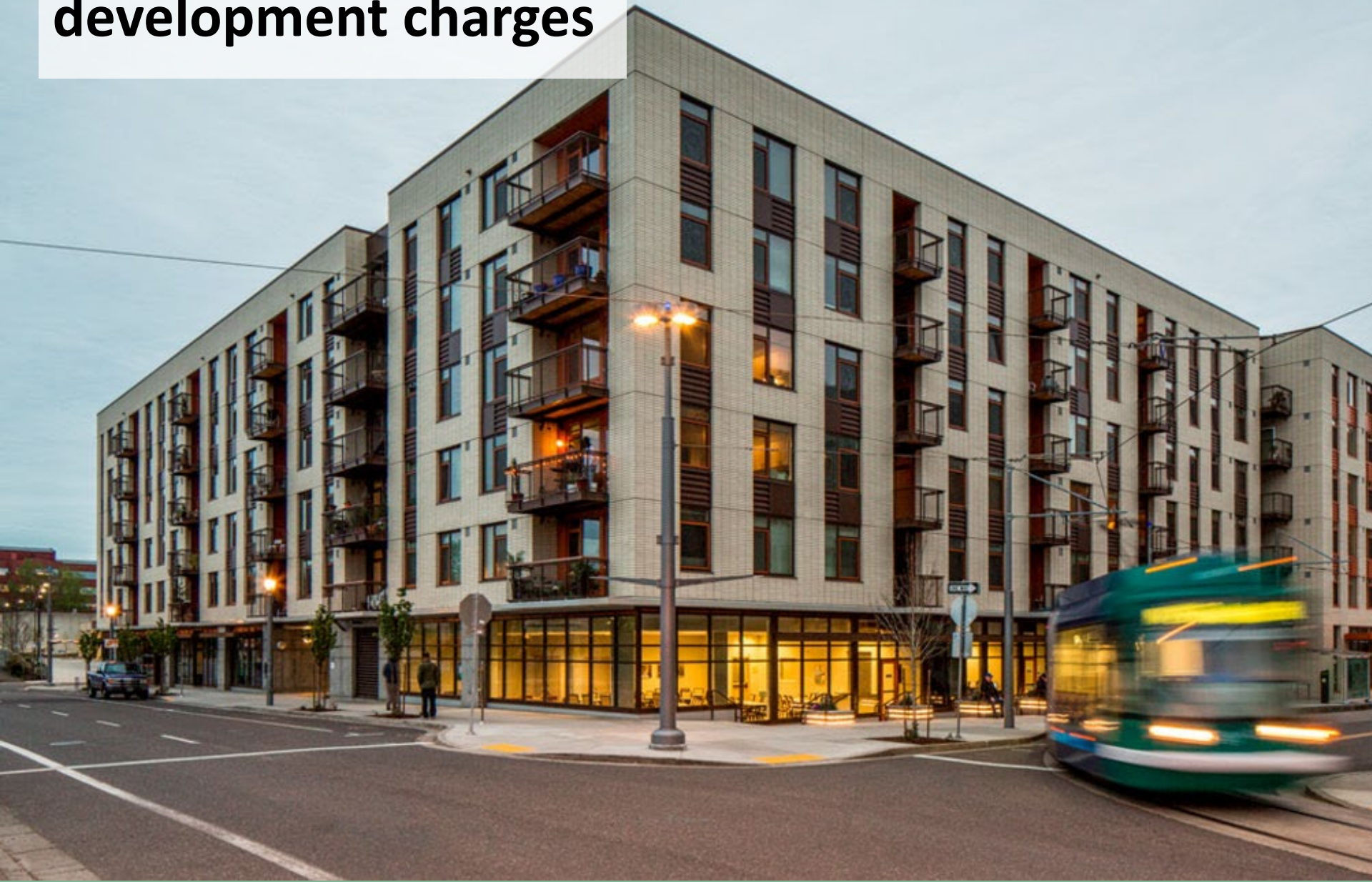
About 50 units, surface parking



Impervious area  
Property line

This customer might pay 4%  
(about \$130) less than today.

# Improve systems development charges





**Lower the cost to  
connect to the system**



# Expand the Clean River Rewards Program

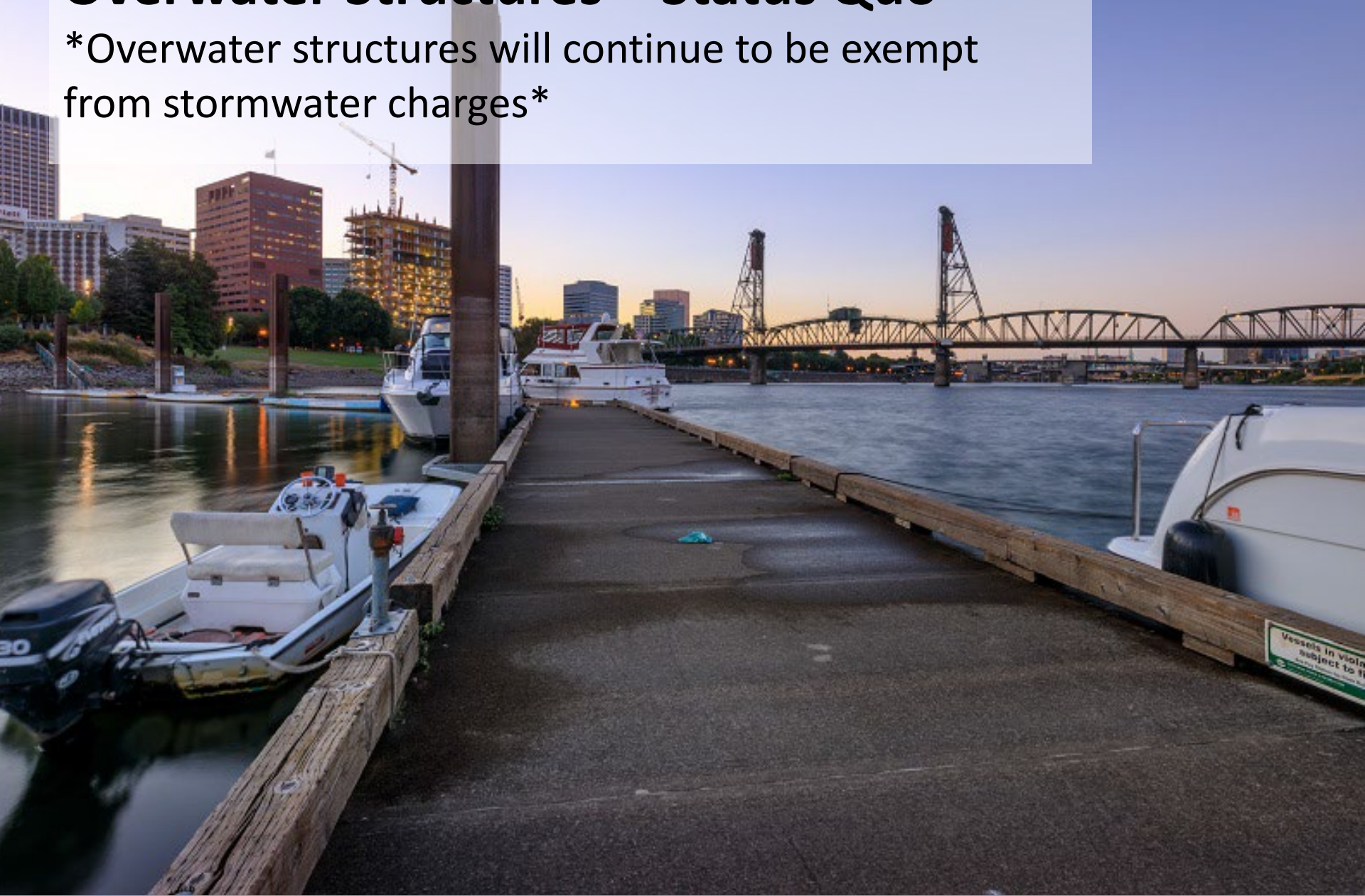




**Columbia River  
Drainage Districts**

# Overwater Structures – Status Quo

\*Overwater structures will continue to be exempt from stormwater charges\*



# Implementation

---

- Three-year phase in for highly impacted customers
- Update code (Council vote Fall 2023)
- Update rules and additional analysis to implement code (Winter 2023/24 – Spring 2024)
- Work with Portland Water Bureau on implementation and public education about bill changes (Ongoing through 2024)





# Thank you!

**Dawn Uchiyama**  
Director

Bureau of Environmental Services

**Anthony Martin**

Financial Planning Manager  
Bureau of Environmental Services