

1/4 cor. between Sec. 13 & 14.

Section line between Sec. 13 & 14.

W. 100'

Scale: 1" = 100'
Property conveyed shown thus: —

HILLSIDE BOULEVARD
LINNONTON ORE
RIGHT-OF-WAY THROUGH
N 1/2 OF S.E. 1/4 SEC. 14 T. 1 N., R. 1 W. W. M
C.W. Woodruff - Engr.

55.2 303.6

N. 09° 59' E.

N 56° 40' W 1960.8'

N 66° 35' W 366.9'

N 03° 39' W 303.4'

N 55° 45' E 181.1'

N 48° 45' E 170.4'

N 57° 25' W 160.0'

N 30° 29' E 157.8'

N 49° 35' W 312.1'

N 52° 36' E 132.5'

N 56° 46' E 150.1'

N 86° 40' W 424.1'

N 52° 29' W 141.3'

N 52° 04' E 71.6'

N 52° 36' E 132.5'

N 56° 46' E 150.1'

N 86° 40' W 424.1'

N 56° 40' W 1960.8'

17° 04'

102° 24'

17° 04'

25° 10'

7° 00'

10° 00'

57° 53' W

161° 20'

13° 06'

109° 18'

106° 26'

86° 00'

100° 26'

70° 00'

90° 38'

63° 11'

109° 18'

106° 26'

86° 00'

21° 43'

21° 57'

22° 20'

10° 19'

56° 59' W

36° 00'

100° 26'

158° 18'

157° 01'

158° 18'

158° 18'

158° 18'

158° 18'

158° 18'

158° 18'

158° 18'

158° 18'

158° 18'

158° 18'

121.7'

118.7'

114.2'

307.4'

50.7'

341'

100'

157.0'

157.0'

157.0'

157.0'

157.0'

157.0'

157.0'

157.0'

157.0'

157.0'

157.0'

157.0'

141.3'

141.3'

141.3'

141.3'

141.3'

141.3'

141.3'

141.3'

141.3'

141.3'

141.3'

141.3'

141.3'

141.3'

141.3'

141.3'

141.3'

141.3'

141.3'

353.0'

353.0'

353.0'

353.0'

353.0'

353.0'

353.0'

353.0'

353.0'

353.0'

353.0'

353.0'

353.0'

353.0'

353.0'

353.0'

353.0'

353.0'

353.0'

262.0'

262.0'

262.0'

262.0'

262.0'

262.0'

262.0'

262.0'

262.0'

262.0'

262.0'

262.0'

262.0'

262.0'

262.0'

262.0'

262.0'

262.0'

262.0'

127.02 E

127.02 E

127.02 E

127.02 E

127.02 E

127.02 E

127.02 E

127.02 E

127.02 E

127.02 E

127.02 E

127.02 E

127.02 E

127.02 E

127.02 E

127.02 E

127.02 E

127.02 E

127.02 E

106.89'

106.89'

106.89'

106.89'

106.89'

106.89'

106.89'

106.89'

106.89'

106.89'

106.89'

106.89'

106.89'

106.89'

106.89'

106.89'

106.89'

106.89'

106.89'

83.8'

83.8'

83.8'

83.8'

83.8'

83.8'

83.8'

83.8'

83.8'

83.8'

83.8'

83.8'

83.8'

83.8'

83.8'

83.8'

83.8'

83.8'

83.8'

50.3'

50.3'

50.3'

50.3'

50.3'

50.3'

50.3'

50.3'

50.3'

50.3'

50.3'

50.3'

50.3'

50.3'

50.3'

50.3'

50.3'

50.3'

50.3'

217.4'

217.4'

217.4'

217.4'

217.4'

217.4'

217.4'

217.4'

217.4'

217.4'

217.4'

217.4'

217.4'

217.4'

217.4'

217.4'

217.4'

217.4'

217.4'

109.7'

109.7'

109.7'

109.7'

109.7'

109.7'

109.7'

109.7'

109.7'

109.7'

109.7'

109.7'

109.7'

109.7'

109.7'

109.7'

109.7'

109.7'

109.7'

109.7'

109.7'

109.7'

109.7'

109.7'

109.7'

109.7'

109.7'

109.7'

109.7'

109.7'

109.7'

109.7'

109.7'

109.7'

109.7'

109.7'

109.7'

109.7'

109.7'

109.7'

109.7'

109.7'

109.7'

109.7'

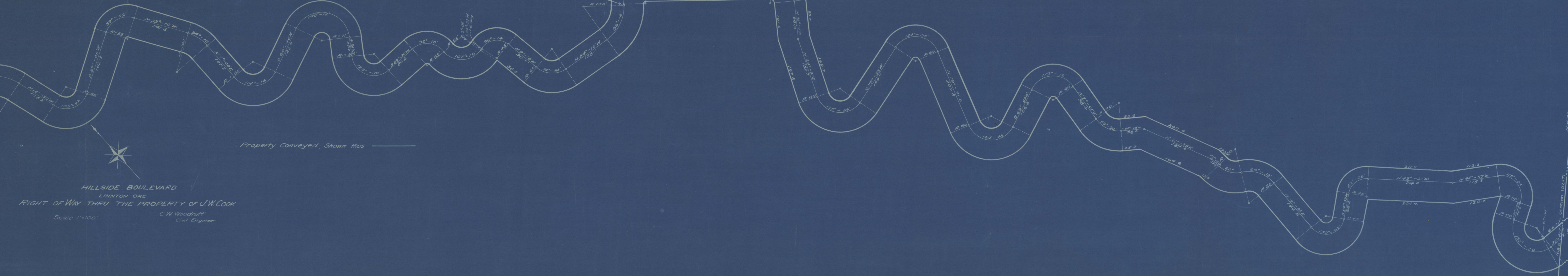
109.7'

109.7'

109.7'

109.7'

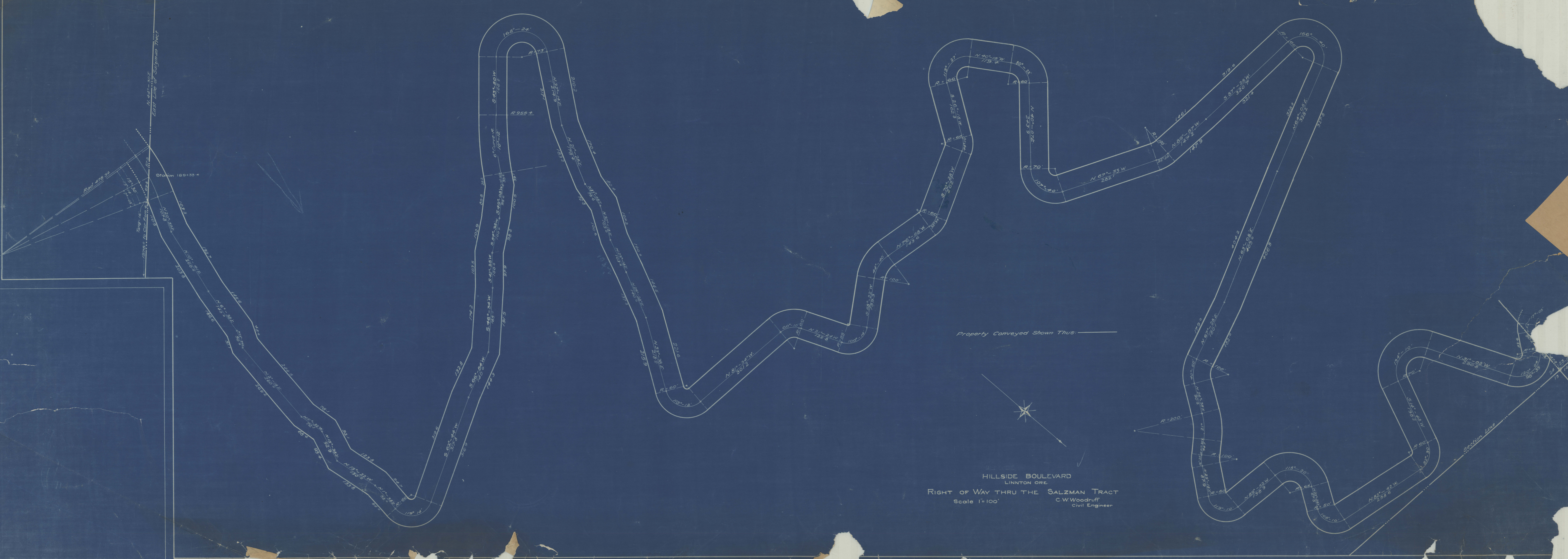
West Line J.W. Cook Tract
Station 162.473 N 42° 05' E



HILLSIDE BOULEVARD
LINNONTON ORE.
RIGHT OF WAY THRU THE PROPERTY OF J.W. COOK
Scale 1"=100'
C.W. Woodruff
Civil Engineer

Property Conveyed Shown thus

East Line J.W. Cook
Station 102.471 N 44° 56' E
1218.8 ± 20 I.P.



N 44° 30' E
East Line of Salzman Tract

Station 189+33 +

Road 476 3/4
Range 16
T. 34 N.
R. 10 W.
S. 23 E.
100'

Property Conveyed Shown Thus: ———



HILLSIDE BOULEVARD
LINNTON ORE.
RIGHT OF WAY THRU THE SALZMAN TRACT
Scale 1"=100'
C.W. Woodruff
Civil Engineer

Section Line