



FLOODPLAIN RESILIENCE PLAN

Virtual Open House

Jeff Caudill

Environmental Planner, BPS

Sallie Edmunds

Central City, River and Environmental
Planning Manager, BPS

Daniel Soebbing

Environmental Planner, BPS



THE BUREAU OF
**PLANNING &
SUSTAINABILITY**

Agenda

- I. Welcome/Introductions
- II. Goals of the Open House
- III. Background
- IV. Floodplain Management Proposals
- V. Project Schedule
- VI. Q & A

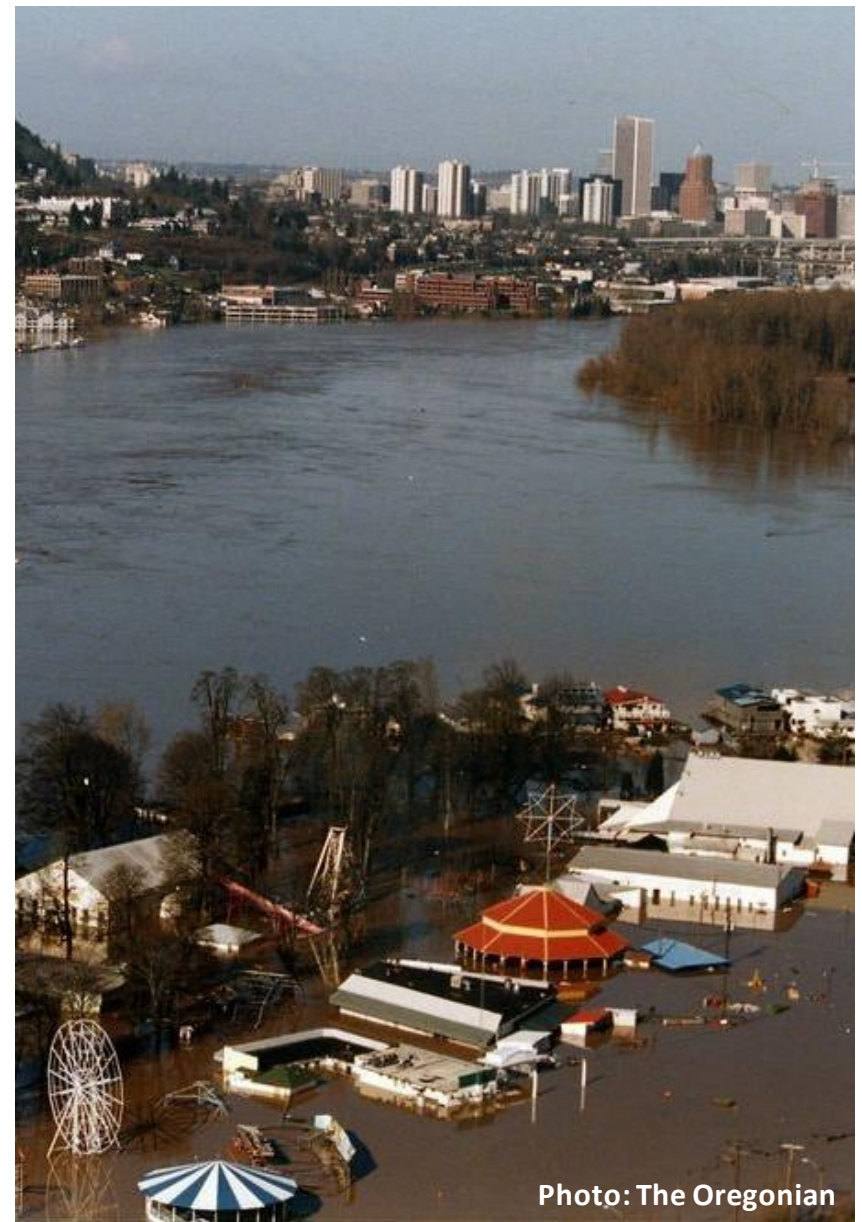


Photo: The Oregonian

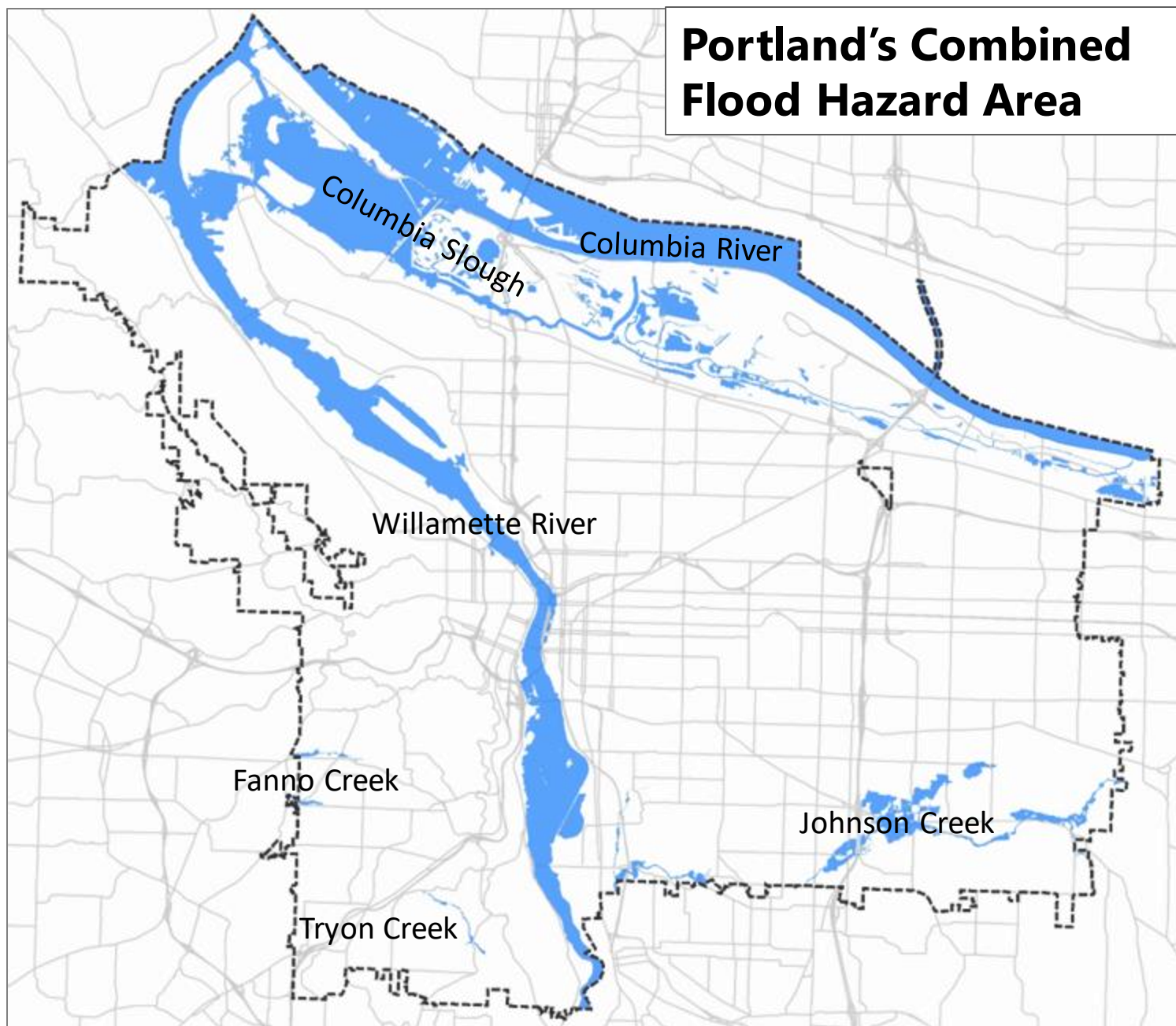
Goals of the Open House

- Provide background on City's floodplains and their management
- Review key Discussion Draft proposals and schedule
- Provide opportunity for you to ask questions



Background

Portland's Combined Flood Hazard Area



Portland's Combined Flood Hazard Area

Made up of

- FEMA's 100-year floodplain
- 1996 Flood Inundation Area
(shown on the Metro Title 3 map)



FEMA's National Flood Insurance Program (NFIP)

- Provides flood insurance in floodplains
- Minimum requirements must be met
- Community Rating System (CRS) participation reduces insurance rates when voluntary measures are taken

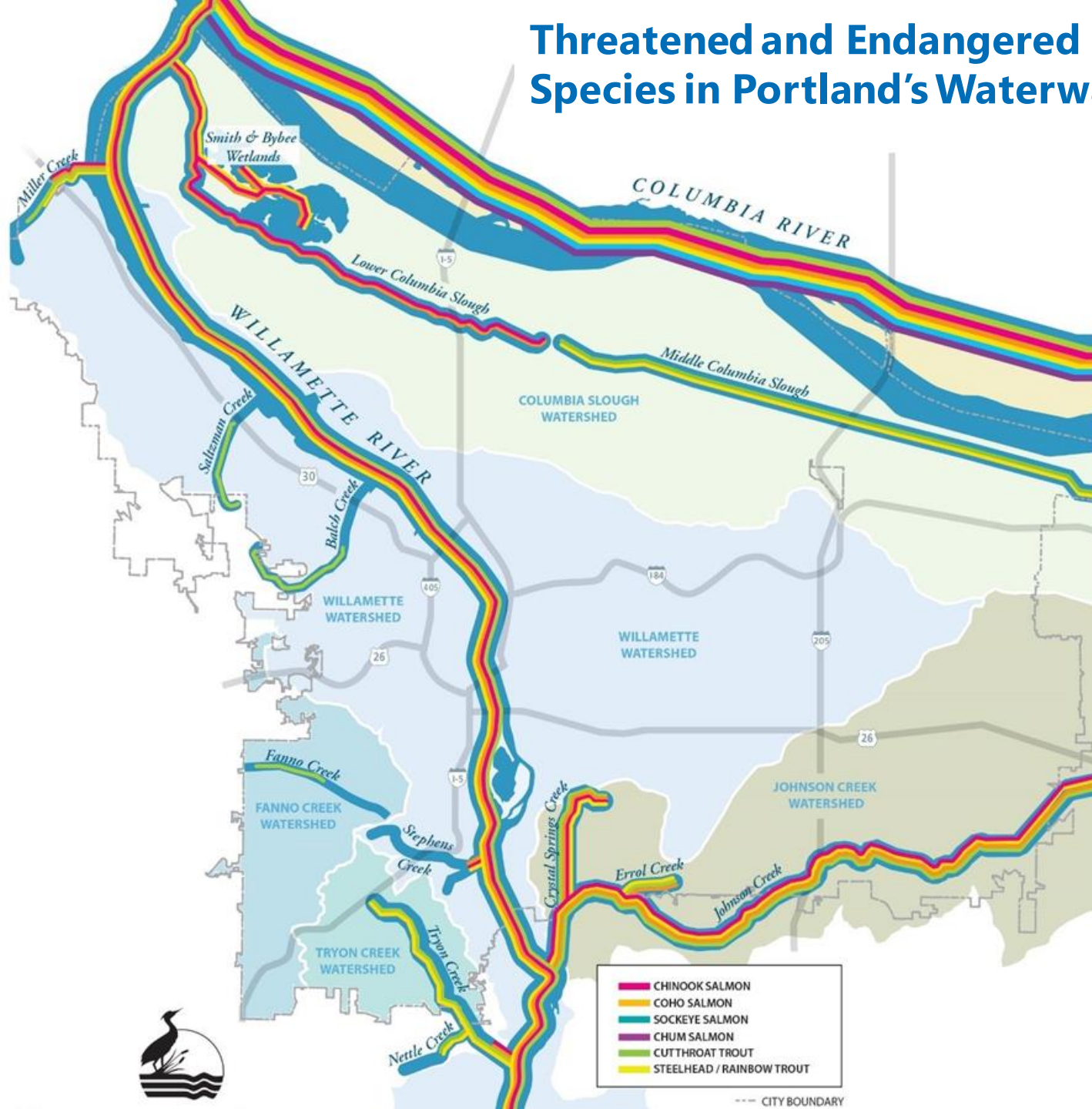


National Flood Insurance Program (NFIP) Biological Opinion

- Determined 16 threatened and endangered salmon and steelhead impacted
- FEMA Implementation Plan to comply with the Biological Opinion released in October 2021



Threatened and Endangered Species in Portland's Waterways



Floodplain Resilience Work Plan

Three phases

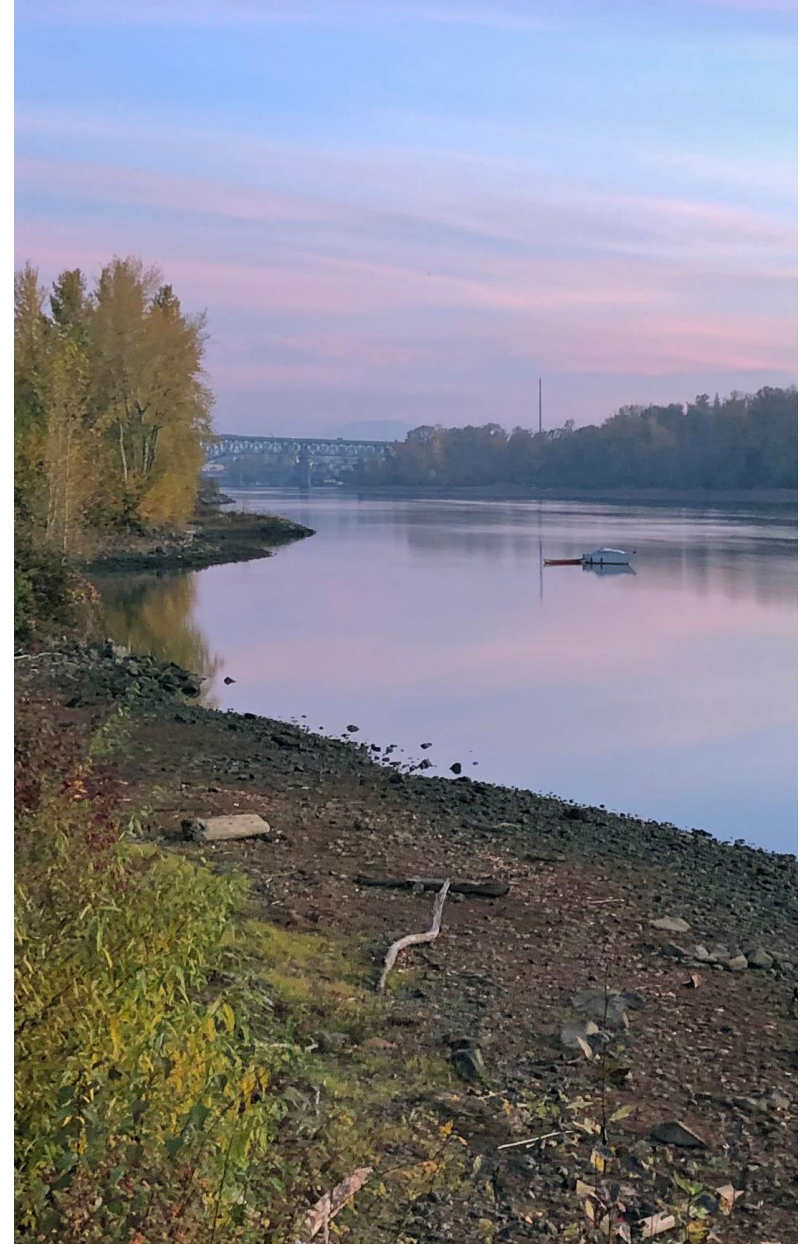
- ✓ Phase 1 – River Plan / South Reach
- Phase 2 – Floodplain Resilience Plan
- Phase 3 – Future Area-specific Updates



Floodplain Management Proposals

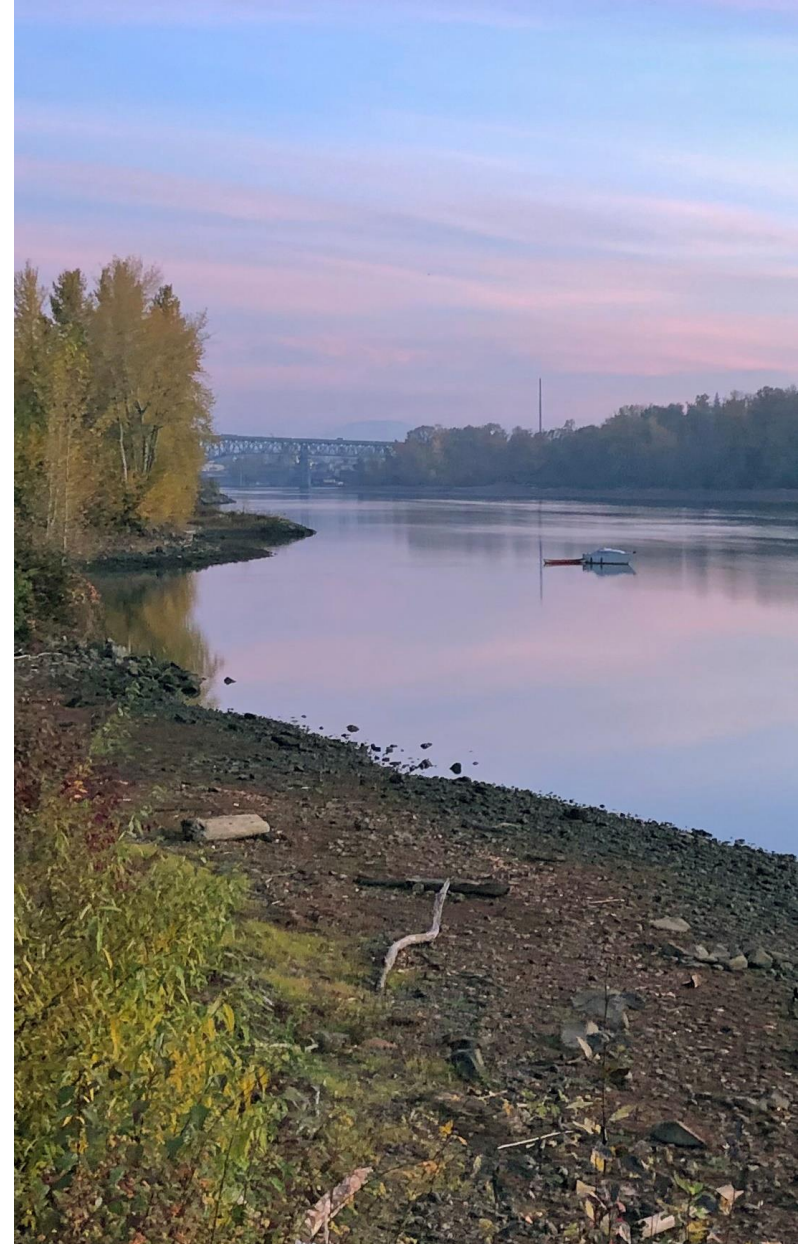
Project Goals

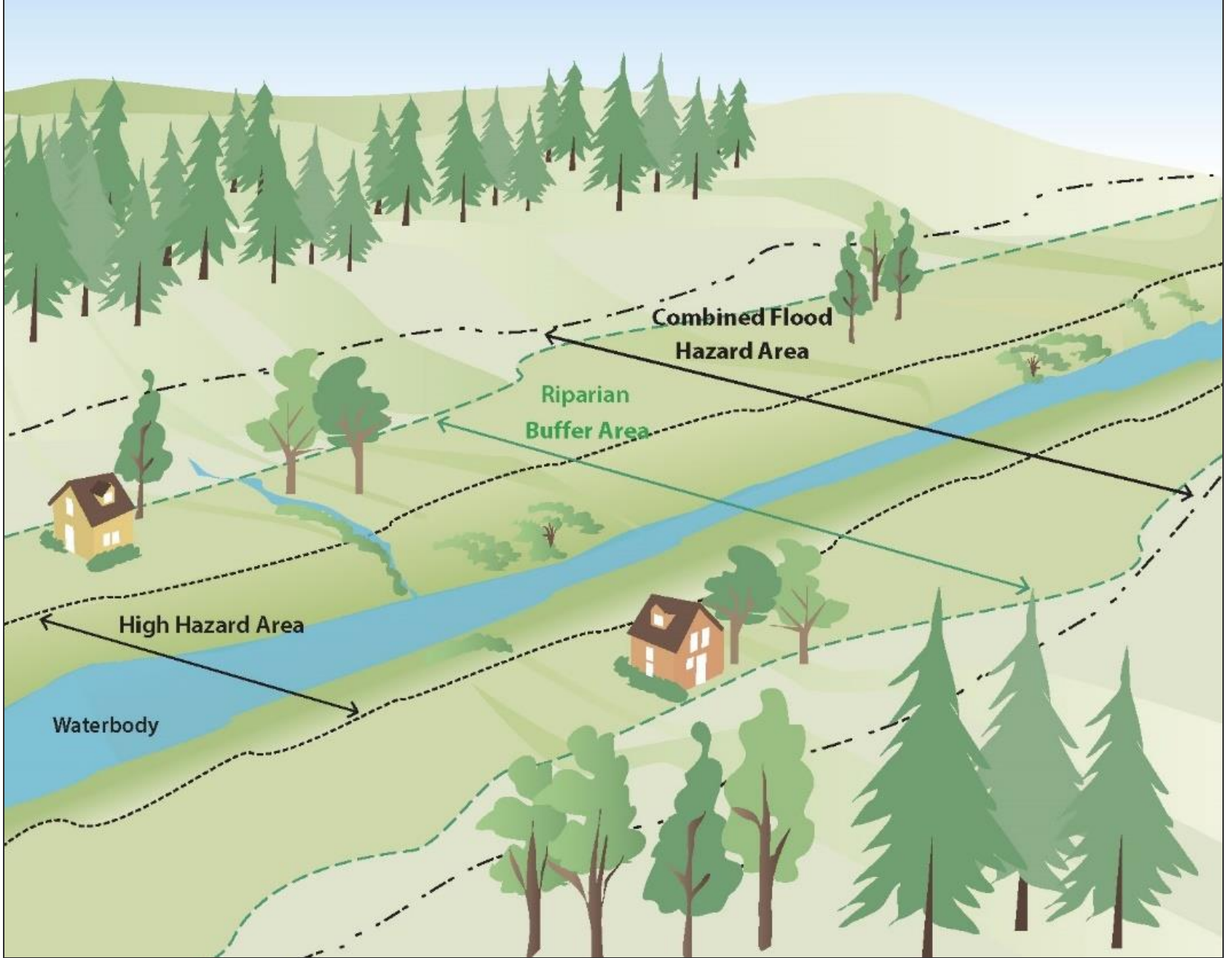
- Maintain access to floodplain insurance and disaster relief funds
- Reduce future flood risk
- Expand habitat for Portland's threatened and endangered fish species



Plan Components

- Update the Zoning Code to address habitat impacts
- Update the Building Code to maintain flood storage
- Support the City's mitigation and restoration efforts

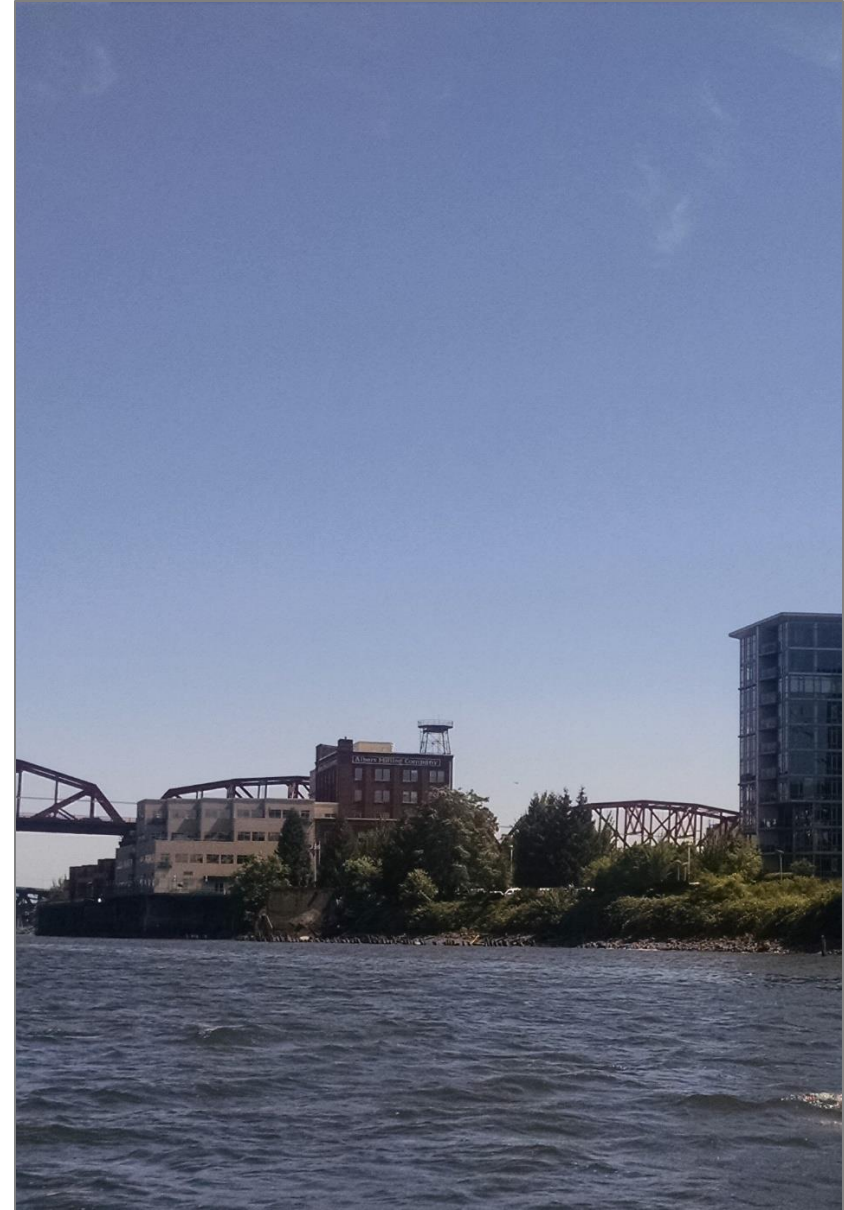




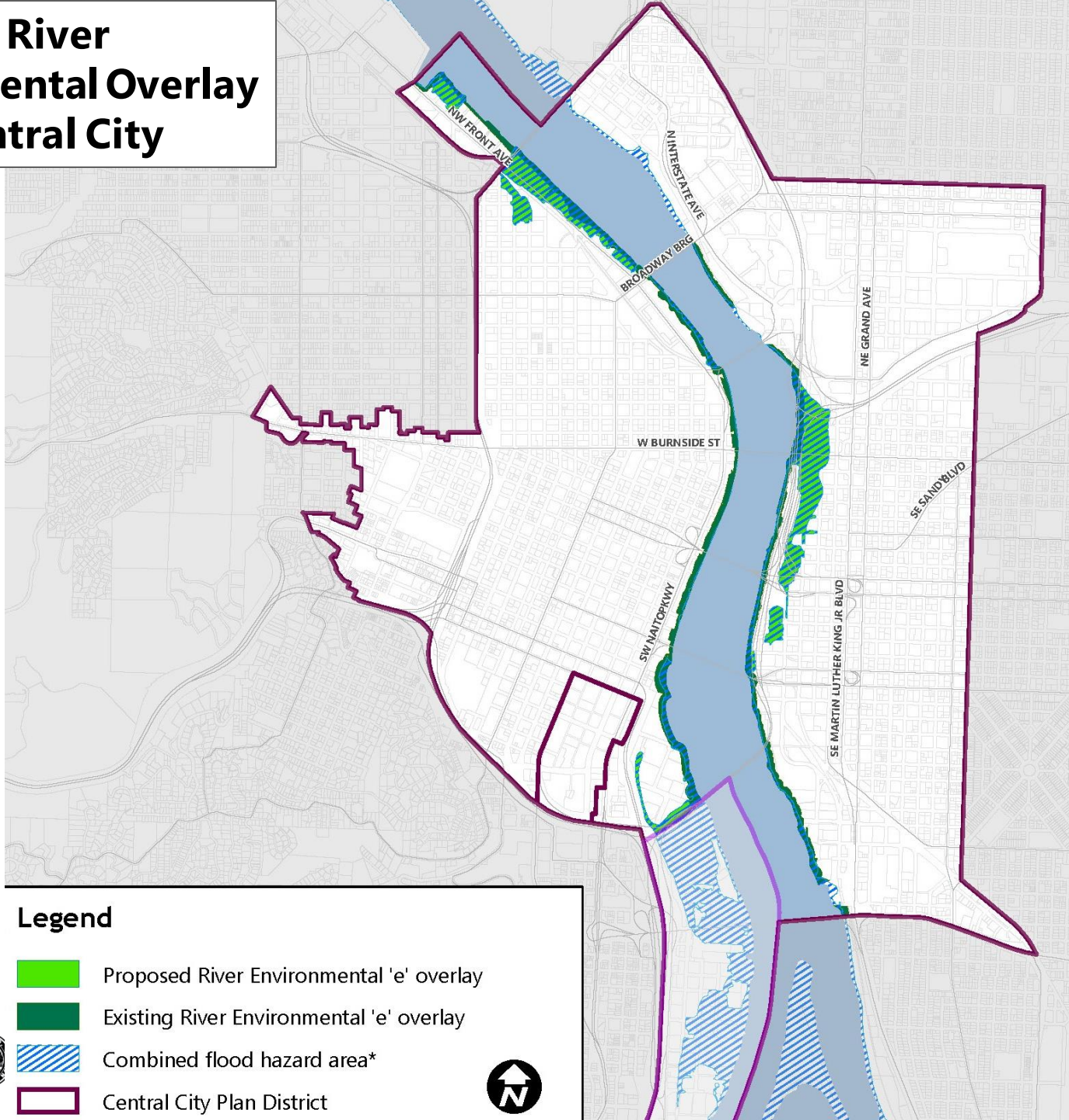
Zoning Code (Title 33)

Willamette River Central Reach


- Apply River Environmental overlay zone to all floodplains
- Increase mitigation required in a new riparian buffer area



Proposed River Environmental Overlay in the Central City



Legend

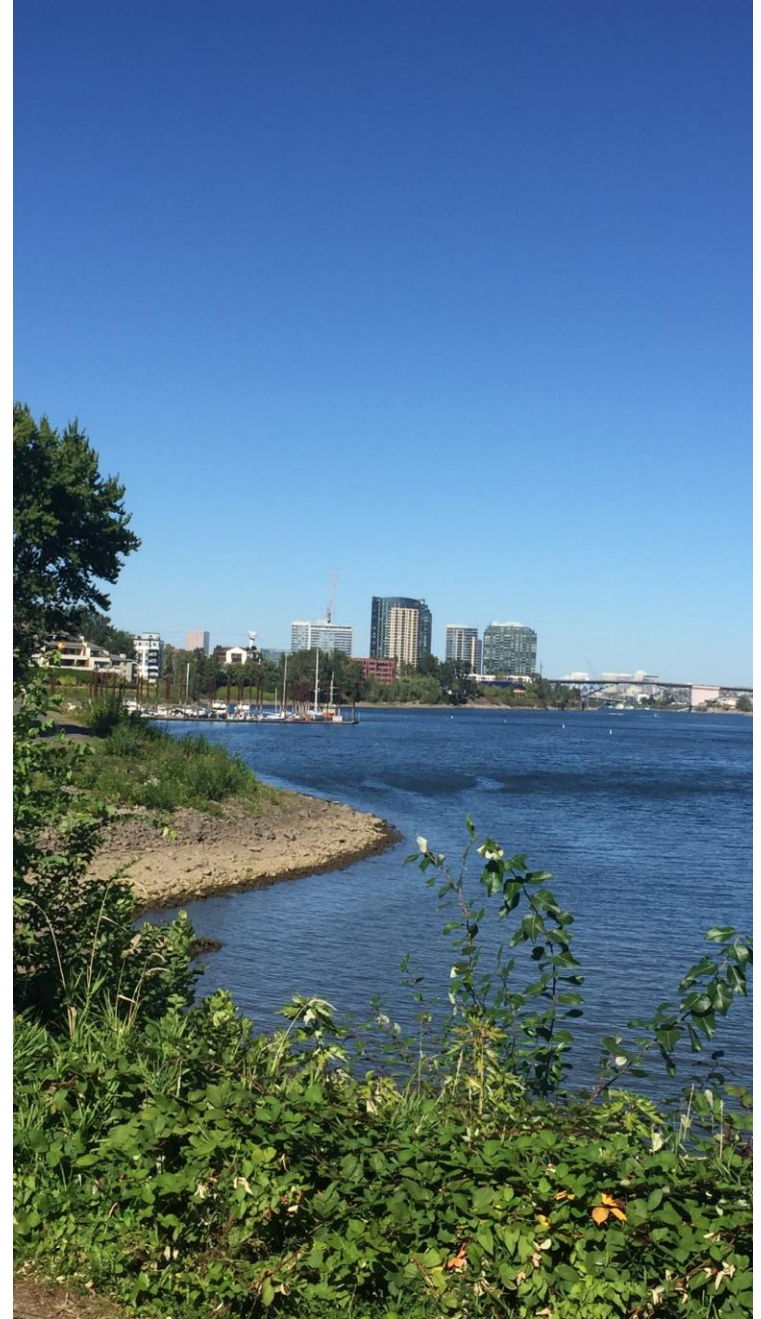
-  Proposed River Environmental 'e' overlay
-  Existing River Environmental 'e' overlay
-  Combined flood hazard area*
-  Central City Plan District



Zoning Code (Title 33)

South Waterfront

- New tree and vegetation requirements
- Updates to exterior lighting standards



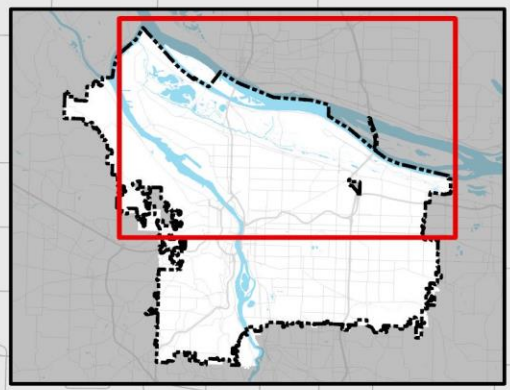
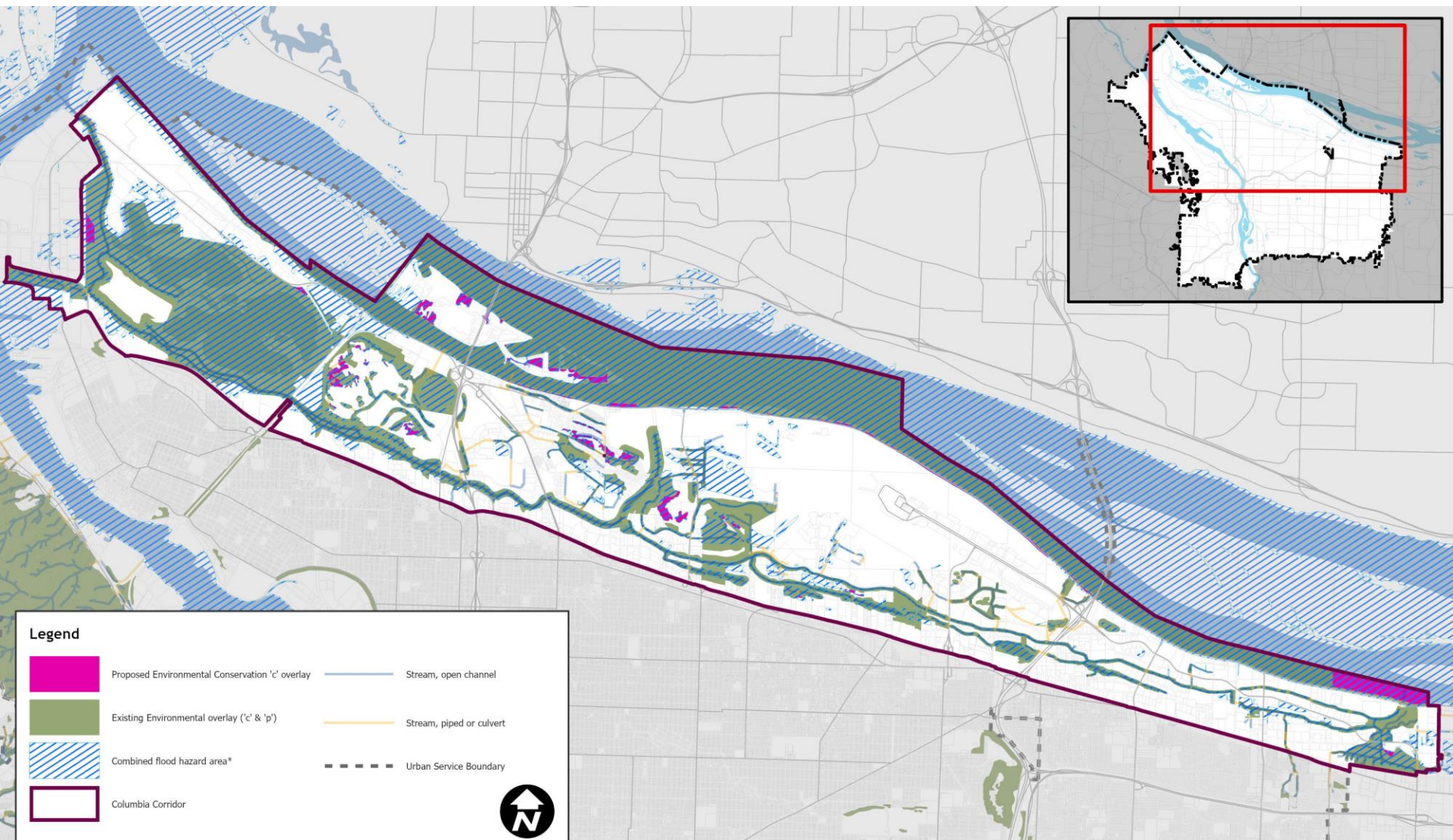
Zoning Code (Title 33)

Columbia Corridor (non-industrial)

- Apply Environmental Conservation overlay zone
- Update tree and vegetation replacement in floodplains



Proposed Environmental Conservation Overlay in the Columbia Corridor



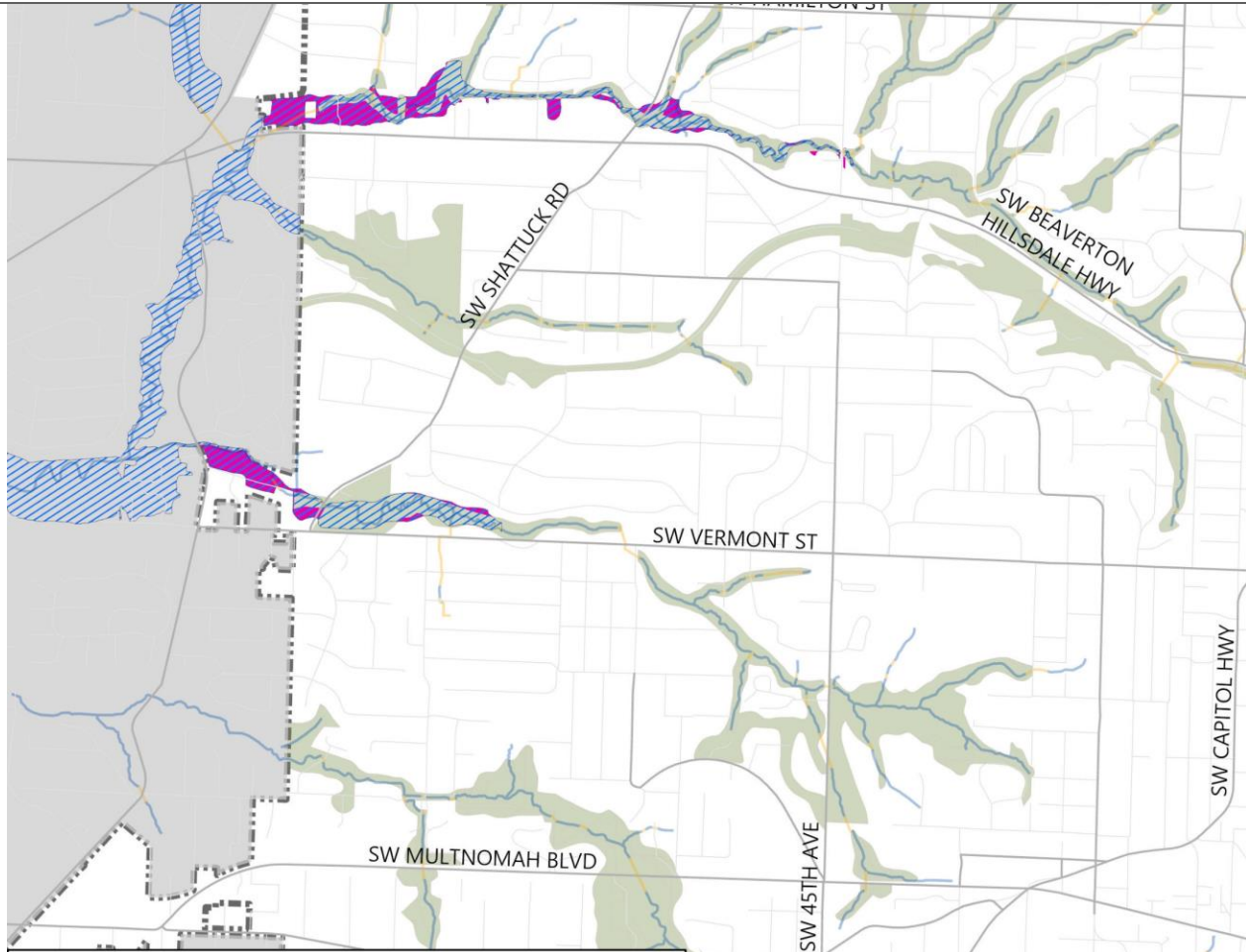
Zoning Code (Title 33)

Fanno Creek and Tryon Creek

- Apply Environmental Conservation overlay zone
- Update tree and vegetation replacement requirements





Proposed Environmental Conservation Overlay Zone along Fanno Creek



Legend

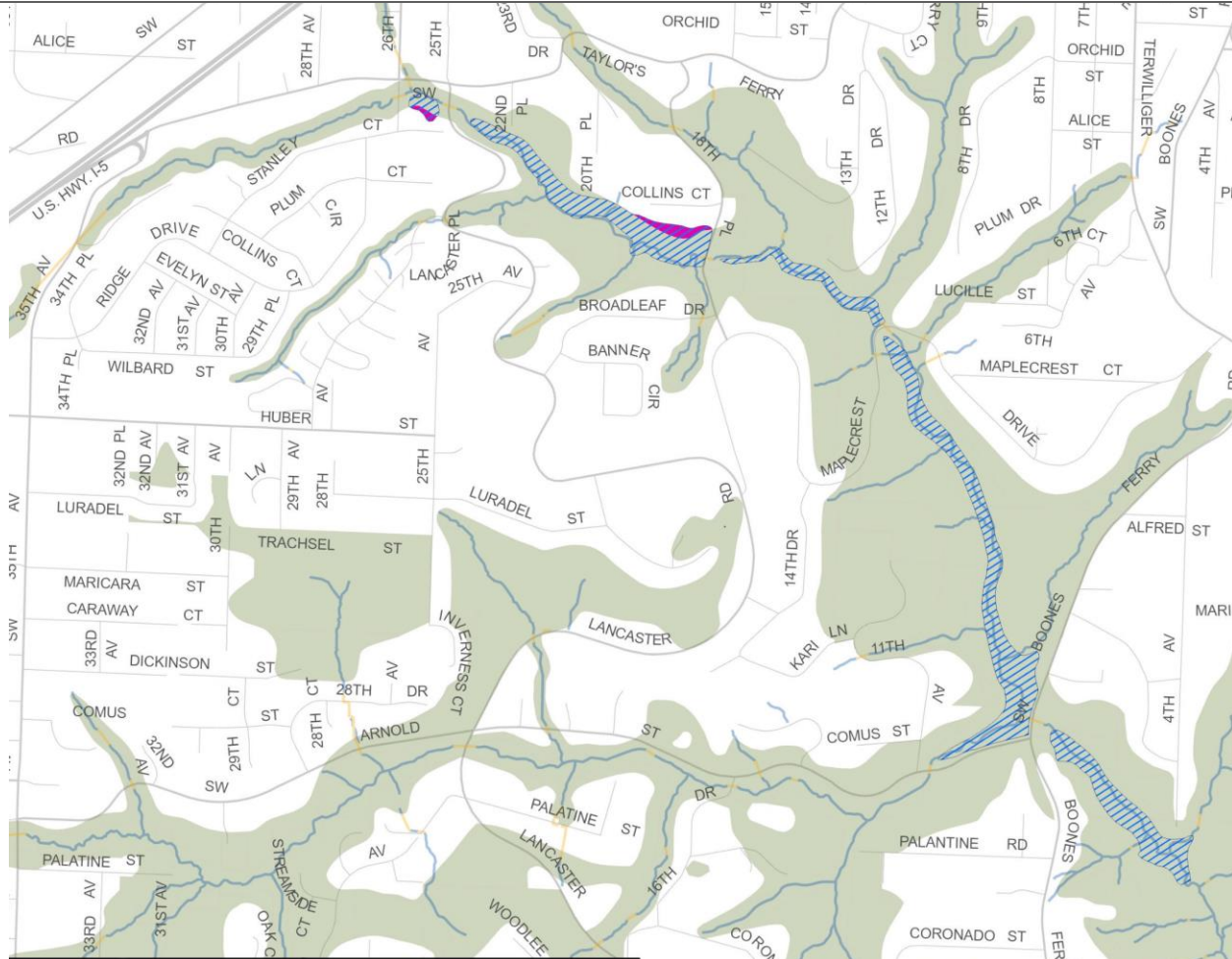
- Proposed Environmental Conservation 'c' overlay
- Existing Environmental overlay ('c' & 'p')
- Combined flood hazard area*
- City Boundary
- Stream, open channel
- Stream, piped or culvert

* Combined flood hazard area is comprised of the FEMA 100-year floodplain and the 1996 Flood Inundation Area

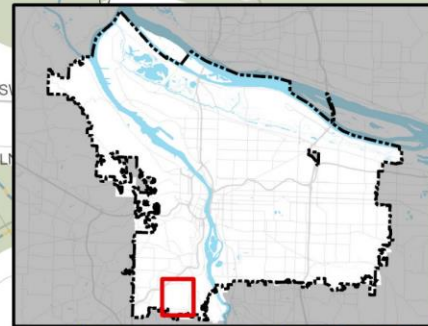
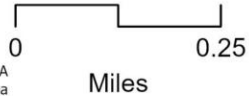


Proposed Environmental Conservation Overlay Zone along Tryon Creek



Legend

- Proposed Environmental Conservation 'c' overlay
- Existing Environmental overlay ('c' & 'p')
- Combined flood hazard area*
- Stream, open channel
- Stream, piped or culvert



THE
PL
SU

* Combined flood hazard area is comprised of the FEMA 100-year floodplain and the 1996 Flood Inundation Area

Building Code (Title 24)

Citywide (some exceptions)

- Increase excavation ratios for fill and structures
 - High hazard area (2:1)
 - Riparian buffer area and undeveloped floodplain (1.5:1)
- Excavation required in rest of floodplain unchanged (1:1)



Related Projects

- U.S. Army Corps Lower Willamette River Hydraulic Model
- BES Mitigation and Restoration Program

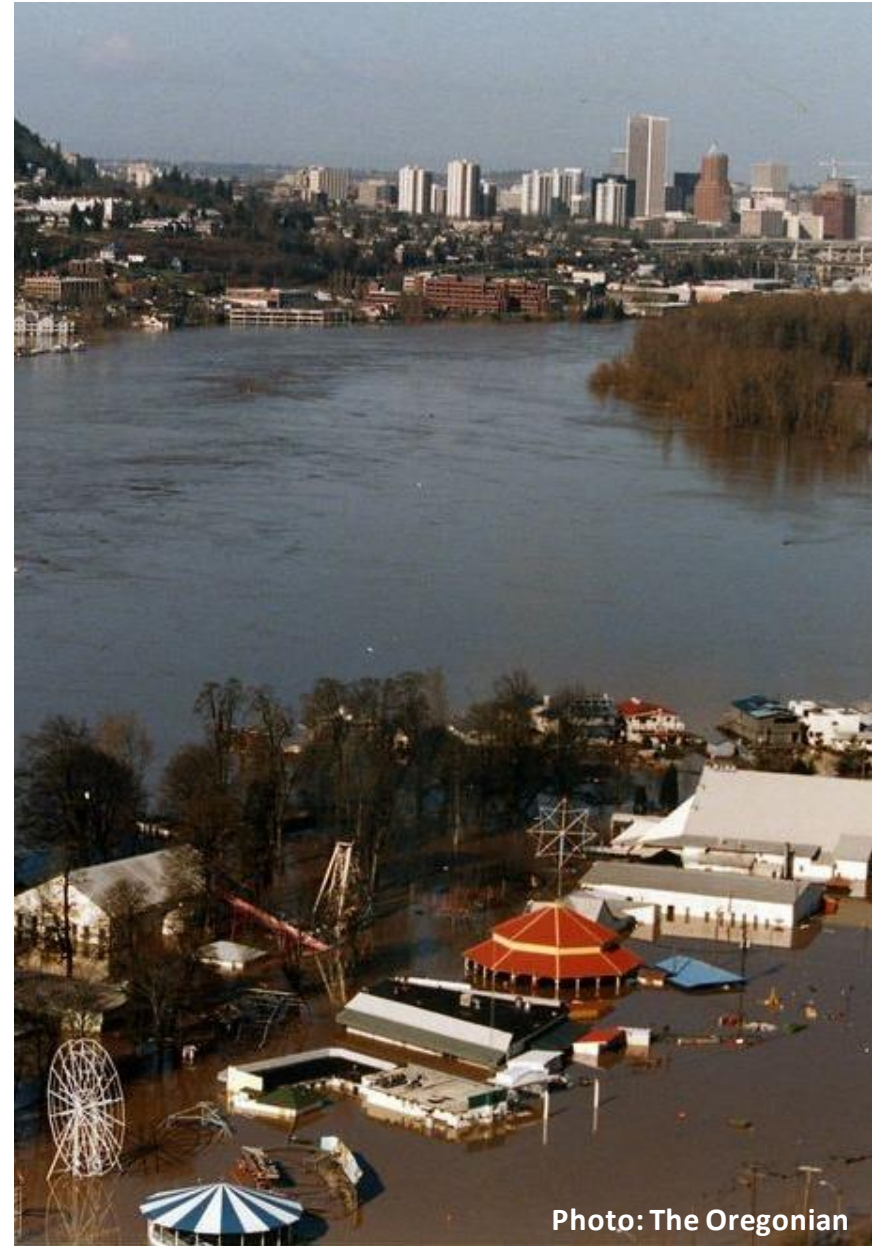


Photo: The Oregonian

Schedule

Nov 2021 – Discussion Draft Released

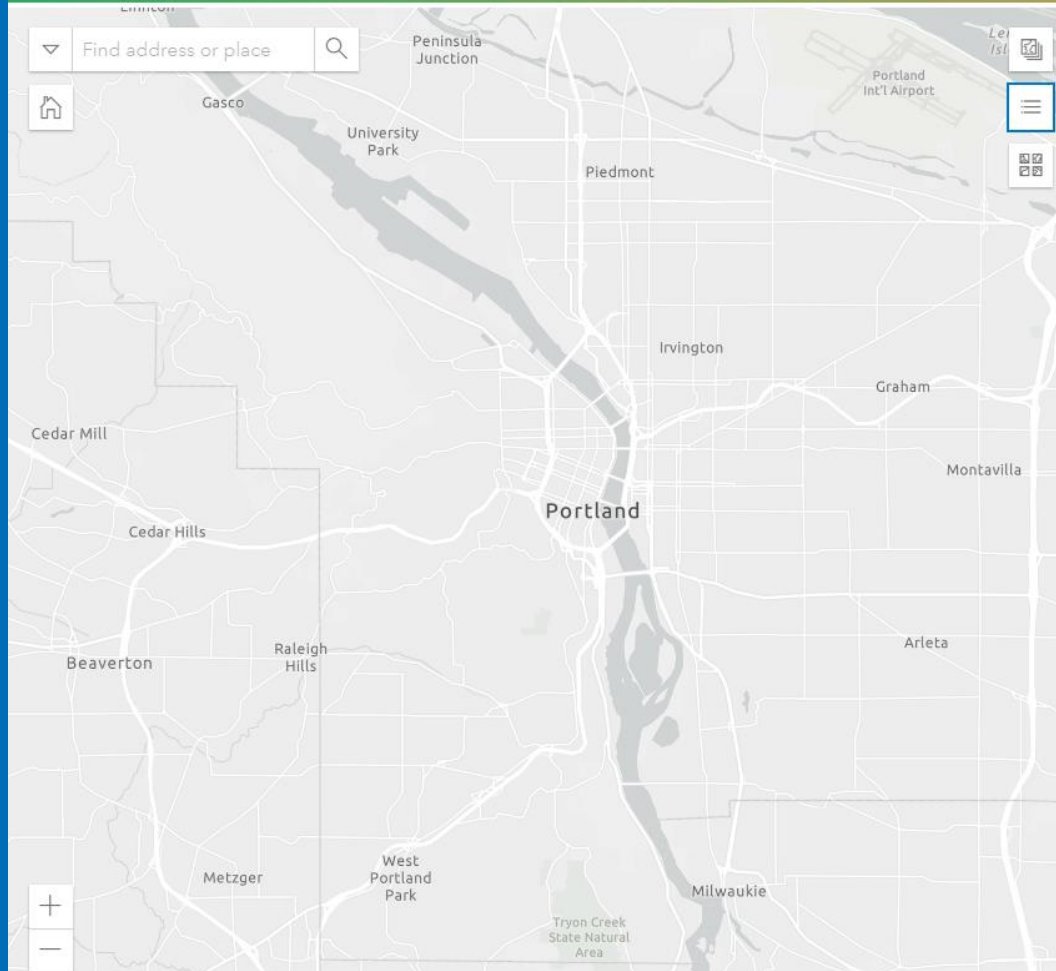
End of Jan 2022 – Comments due

Nov/Dec 2021 – US Army Corps model released

Spring 2022 – Proposed Draft (Planning & Sustainability Commission)

Summer/Fall 2022 – Recommended Draft (City Council)





Floodplain Resilience Plan

[Read the Discussion Draft Documents](#)

[COMMENT](#)

Please Note: To submit your comment in relation to a selected parcel, you must first make a selection on the map.

Project Timeline

- November 10, 2021** – Discussion Draft released for public comment
- January 28, 2021** – End of the public comment period on the Discussion Draft
- Spring 2022** – Planning and Sustainability Commission public hearing(s), work sessions and recommendation
- Summer 2022** – Portland City Council public hearing(s), work sessions, and decision

The purpose of the Floodplain Resilience Plan is to protect floodplain habitat and the people

Use the Map App to review specific proposals
<https://www.portlandmaps.com/bps/floodplain/>

More Information

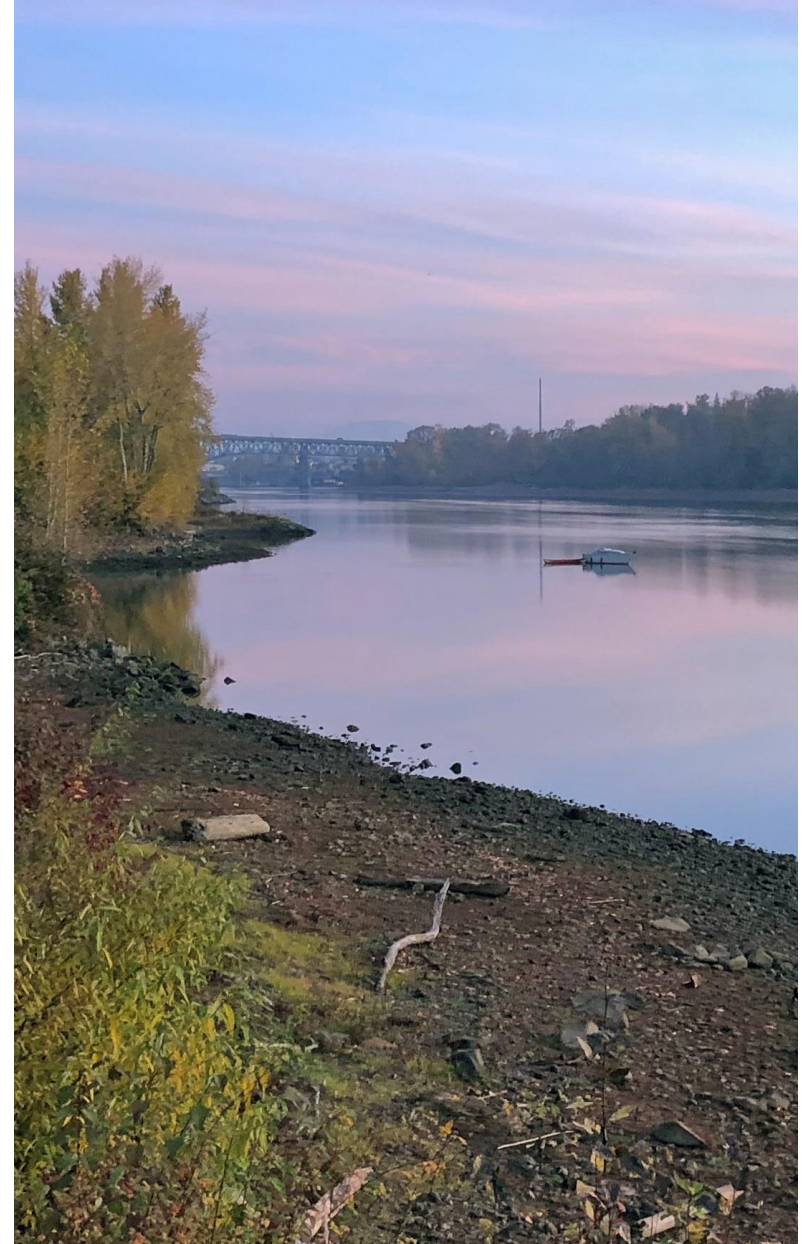
Visit our website to read the Discussion Draft or schedule a meeting with staff:

<https://www.portland.gov/bps/environment-planning/floodplain-project>

Email us:

floodplainproject@portlandoregon.gov

Give us a call at 503-823-7831





THE BUREAU OF **PLANNING** & **SUSTAINABILITY**

Jeff Caudill

Environmental Planner

floodplainproject@portlandoregon.gov

VISIT US ONLINE portland.gov/bps

The City of Portland is committed to providing meaningful access. To request translation, interpretation, modifications, accommodations, or other auxiliary aids or services, contact 503-823-7700, Relay: 711.

Traducción e Interpretación | Biên Dịch và Thông Dịch | अनुवादन तथा व्याख्या | 口笔译服务 |
Устный и письменный перевод | Turjumaad iyo Fasiraad | Письмовий і усний переклад |
Traducere și interpretariat | Chiaku me Awewen Kapas | 翻訳または通訳 | ການແປພາສາ ຫຼື ການ
ອະທິບາຍ | الترجمة التحريرية أو الشفهية | [Portland.gov/bps/accommodation](https://portland.gov/bps/accommodation)