



FLOODPLAIN RESILIENCE PROJECT FOCUS GROUP

May 9, 2022

Camille Elmore-Trummer

Principal Consultant, Camille E. Trummer
Consulting

Sallie Edmunds

Central City, River and Environmental
Planning Manager, BPS

Jeff Caudill

Environmental Planner, BPS



THE BUREAU OF
**PLANNING &
SUSTAINABILITY**

Welcome!

Please share:

- **Name**
- **Pronouns**
- **Neighborhood**
- **Access needs?**
- ***What is your favorite body of water in the Metro region and why?***



Ground Rules

Mute yourself unless speaking

Share the mic

Lead with curiosity

Commit to confidentiality when applicable

Speak from your own experience

Honor every person's access needs

Purpose and Goals

Introduce the Floodplain Resilience Plan/Project

Solicit your feedback about the Plan, and potential resources to help mitigate flood risks

Establish relationships with organizational leaders and become a trusted partner in disaster preparedness

Agenda

- I. Background
- II. Floodplain Resilience Plan Proposals
- III. Mitigation Bank Efforts
- IV. Facilitated Discussion

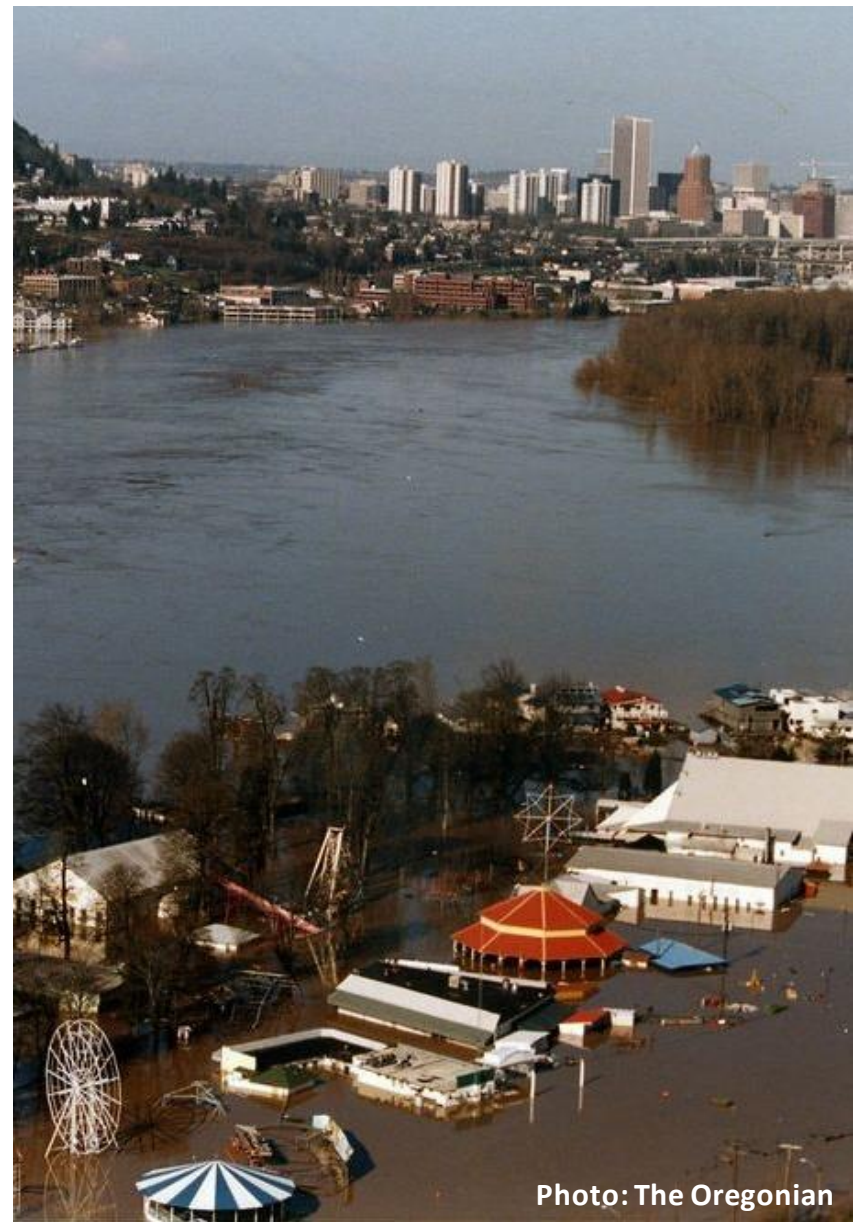
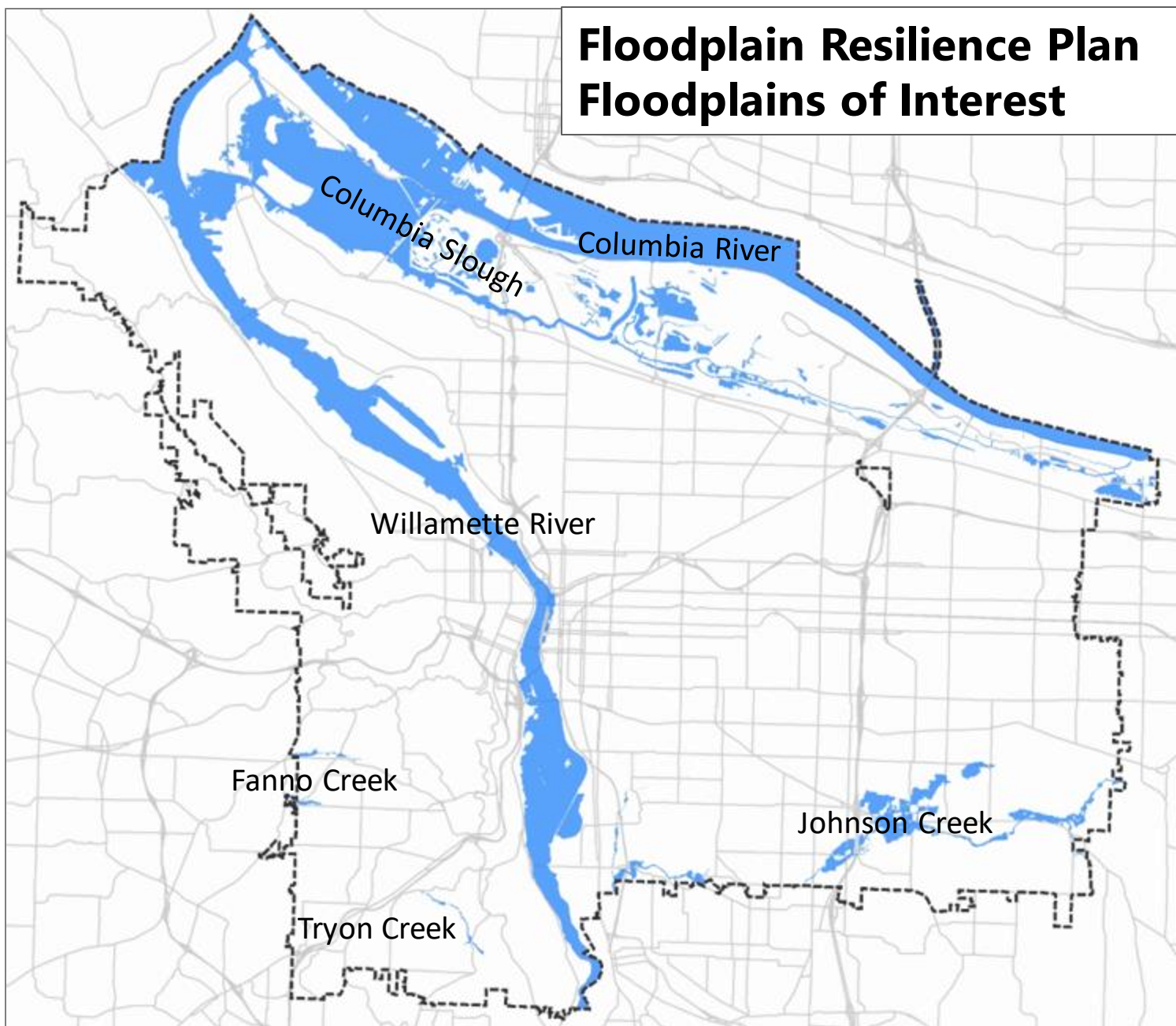


Photo: The Oregonian

Background

Floodplain Resilience Plan Floodplains of Interest



FEMA's National Flood Insurance Program (NFIP)

- Provides flood insurance in floodplains
- Minimum requirements must be met
- Community Rating System (CRS) participation reduces insurance rates



Biological Opinion on the National Flood Insurance Program (NFIP)

- Determined 16 threatened and endangered salmon and steelhead impacted
- FEMA Implementation Plan to comply with the Biological Opinion released in October 2021

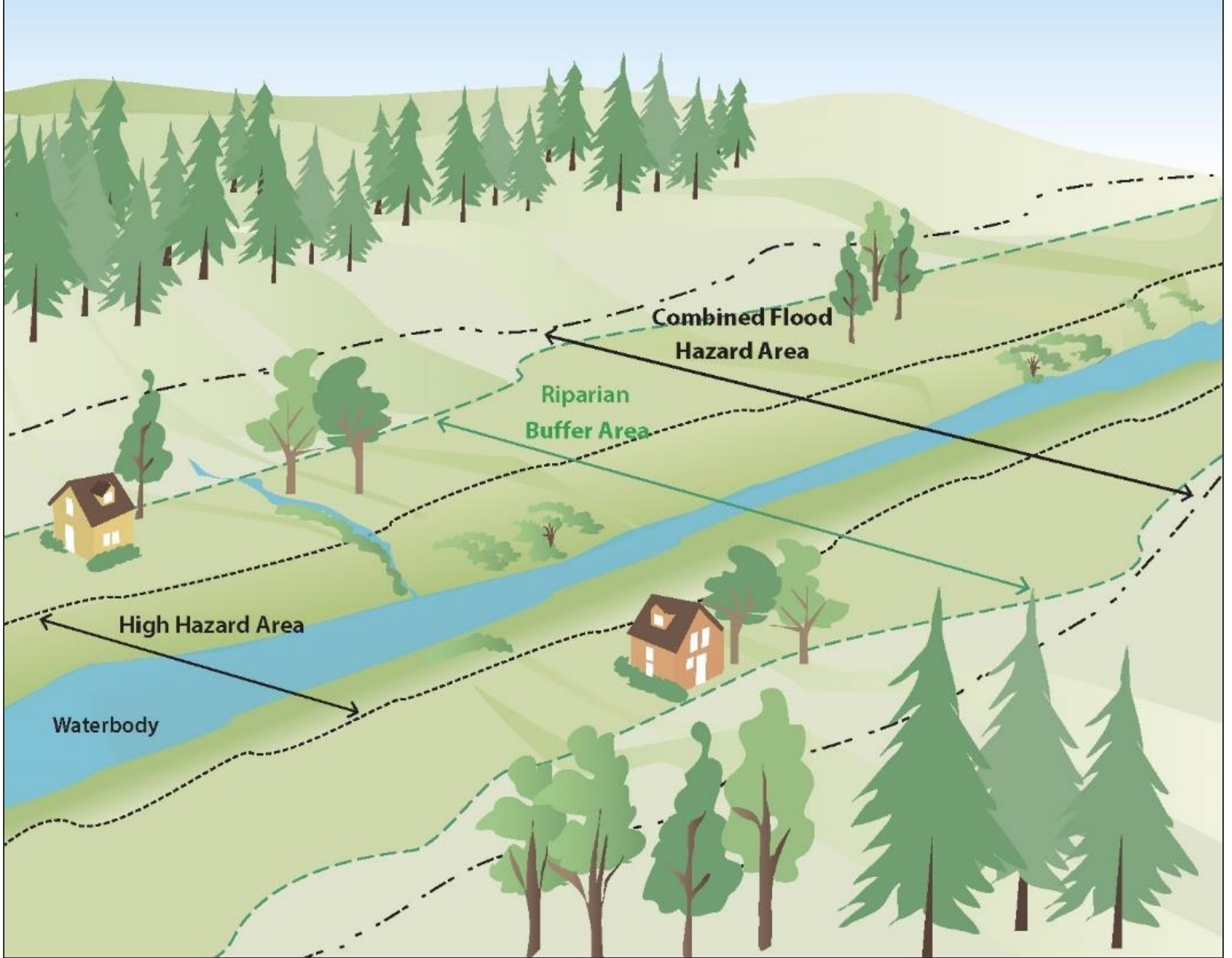


Floodplain Resilience Plan Proposals

Project Goals

- Maintain access to floodplain insurance and disaster relief funds
- Reduce future flood risk
- Expand habitat for Portland's threatened and endangered species





Floodplain Resilience Plan

Proposals

- Development must avoid, minimize, then offset impacts
- Protect floodplain trees and vegetation through updated regulations
- Ensure new development does not reduce the area available for flood waters

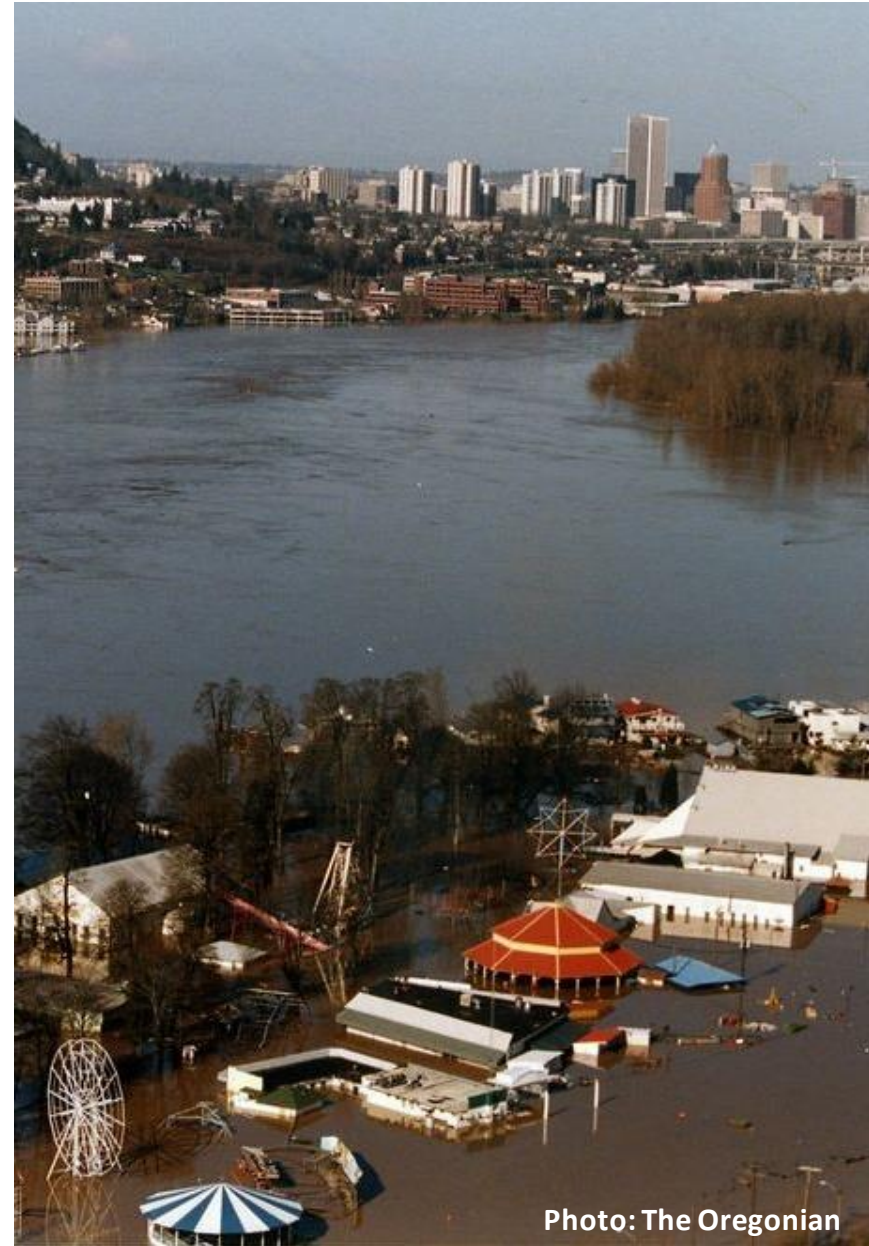
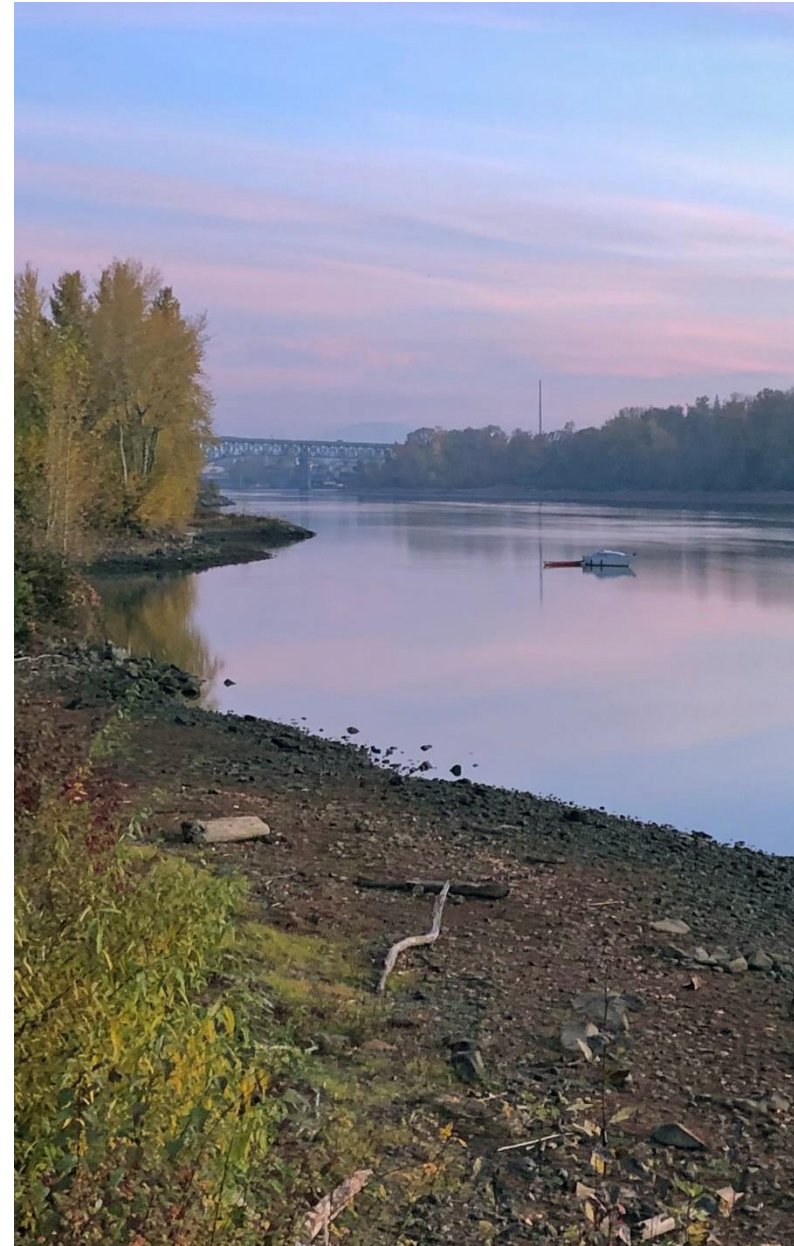


Photo: The Oregonian

Floodplain Resilience Plan

Zoning Code (Title 33) Updates

- Apply environmental zones to floodplains
- Update tree and vegetation requirements in floodplains
- Establish riparian buffer area in Willamette Central Reach



Floodplain Resilience Plan

Building Code (Title 24) Updates

- Require excavation for fill *and* structures
- Increase excavation ratios along the river, in the riparian buffer area and on undeveloped floodplain



Floodplain Resilience Plan

Related Project

- U.S. Army Corps of Engineers Willamette River Model

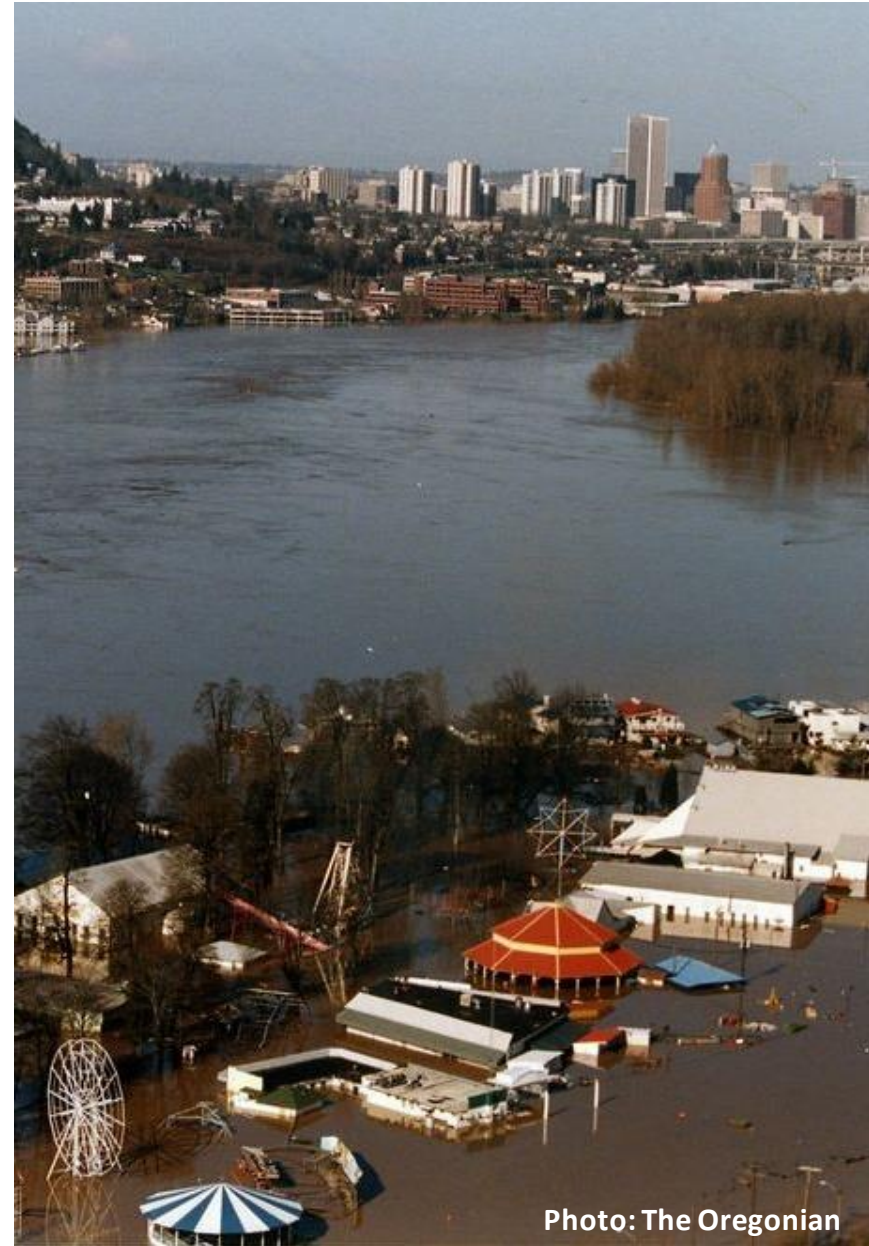


Photo: The Oregonian

Mitigation Banks

- Credits used to offset habitat and flood storage impacts
- Provide a more accessible option for off-site mitigation
- Identified as a critical need during Discussion Draft



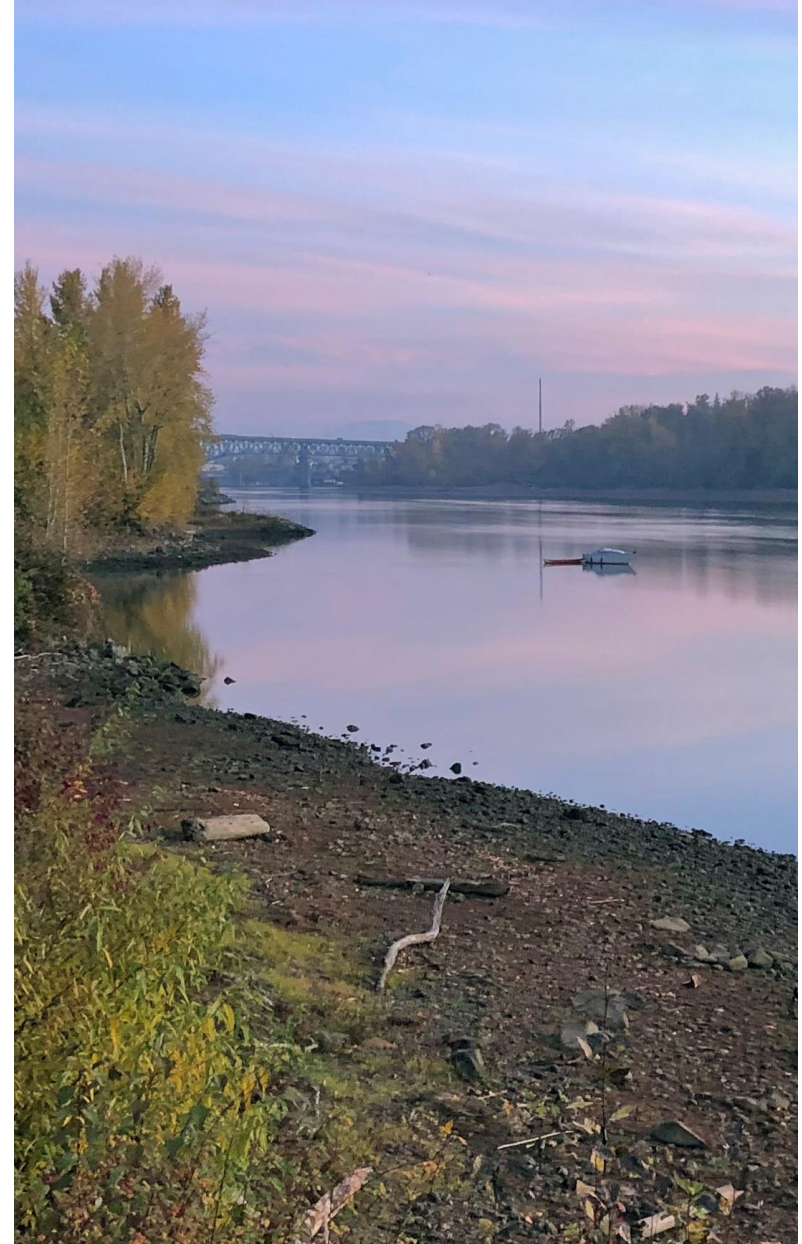
Mitigation Banks

- Existing banks with flood storage credits (potentially)
 - Linnton Plywood
 - PGE Harborton
- Evaluating City bank at OMSI/
Eastbank Crescent



City of Portland Floodplain Programs

- A number of bureaus help the City and its residents prepare for floods
- Floodplain restoration program
- Willing Seller Program
- Assistance with obtaining flood certificates (past City effort)



Schedule

Nov 2021 – Discussion Draft
Released

Summer 2022 – Proposed Draft
(Planning & Sustainability
Commission)

Fall/Winter 2022 – Recommended
Draft (City Council)



Discussion Question #1

When you think about the potential for future flooding in the city, what are your concerns? Who do you think will be most significantly impacted by future flood events? Are there particular locations or populations of concern?

Discussion Question #2

Given what you know about the proposals in the Floodplain Resilience Plan, do you think the proposals will help the city be better prepared for future flooding?

Are there concerns you have about the changes proposed, including the mitigation requirements?

How could it be improved?

Discussion Question #3

What concerns do you have about the use of mitigation banks as an alternative to on-site mitigation?

What are your thoughts on the potential for City-run mitigation banks? Do you anticipate any unexpected consequences or impacts that we should address?

If mitigation banks were constructed and managed by private (for profit) and/or nonprofit entities, would that change your thoughts on the use of banks?

Discussion Question #3 (cont.)

If mitigation banks were constructed and managed by private (for profit) and/or nonprofit entities, would that change your thoughts on the use of banks?

If you are opposed to or skeptical of mitigation banks, what ideas or tools can you suggest for how the city can prevent environmental losses and/or improve environmental functions through the Floodplain Resilience Plan?

Discussion Question #4

What types of actions do you think the City should take to help individuals, businesses, etc. better prepare for future flooding?

Are there programs or tools that we should consider to address potential impacts on Black, Indigenous, and People of Color (BIPOC) and other underrepresented communities?

Next Steps

BPS will synthesize key findings from today's focus group

BPS will share Floodplain Resilience Plan updates and forthcoming resources once available

Questions? Email Camille Trummer at
hello@camilletrummer.com



THE BUREAU OF **PLANNING** & **SUSTAINABILITY**

Jeff Caudill

Environmental Planner

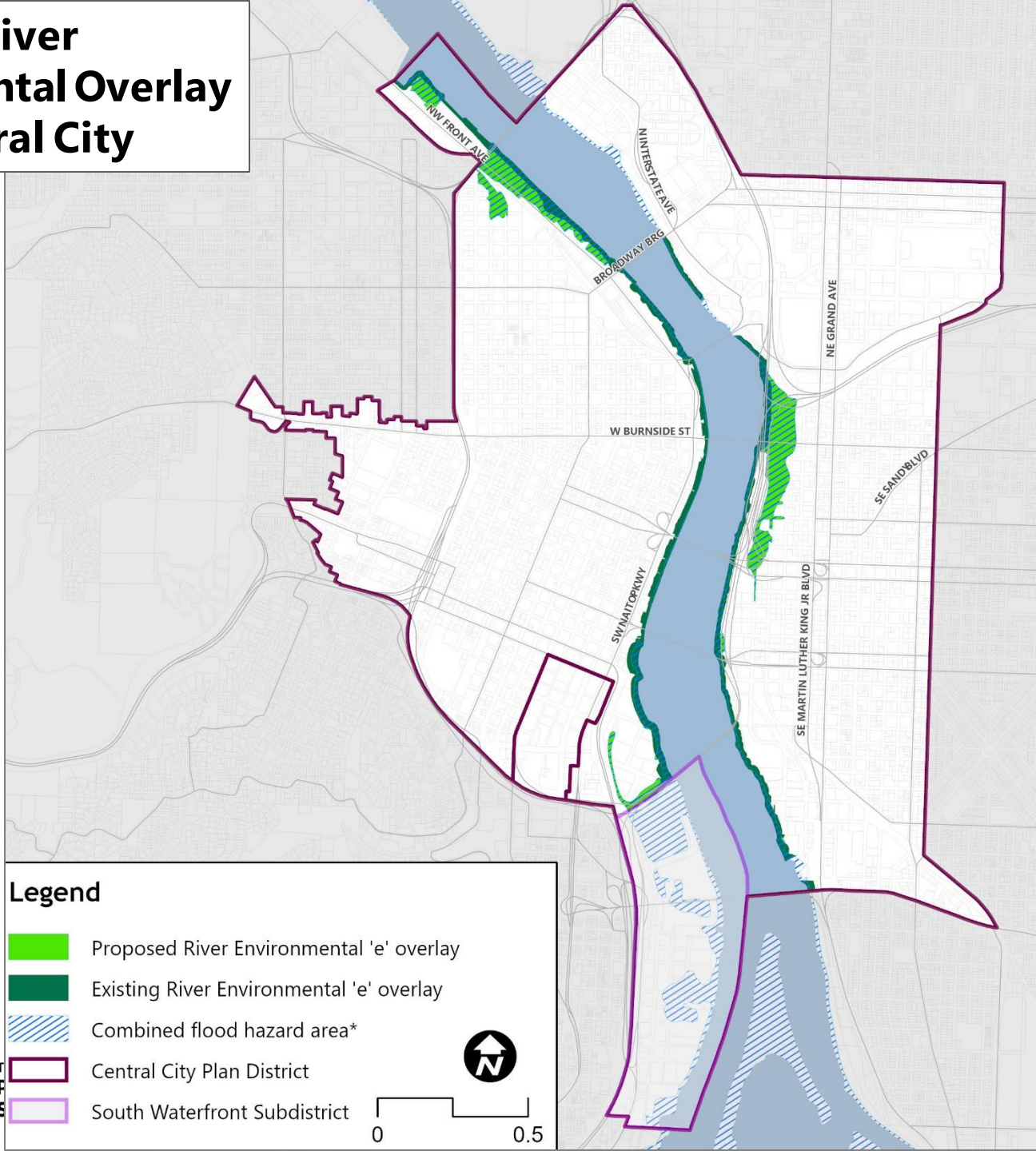
floodplainproject@portlandoregon.gov

VISIT US ONLINE portland.gov/bps

The City of Portland is committed to providing meaningful access. To request translation, interpretation, modifications, accommodations, or other auxiliary aids or services, contact 503-823-7700, Relay: 711.


Traducción e Interpretación | Biên Dịch và Thông Dịch | अनुवादन तथा व्याख्या | 口笔译服务 |
Устный и письменный перевод | Turjumaad iyo Fasiraad | Письмовий і усний переклад |
Traducere și interpretariat | Chiaku me Awewen Kapas | 翻訳または通訳 | ການແປພາສາ ຫຼື ການ
ອະທິບາຍ | الترجمة التحريرية أو الشفهية | [Portland.gov/bps/accommodation](https://portland.gov/bps/accommodation)

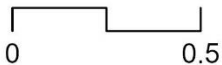
Proposed River Environmental Overlay in the Central City



Legend

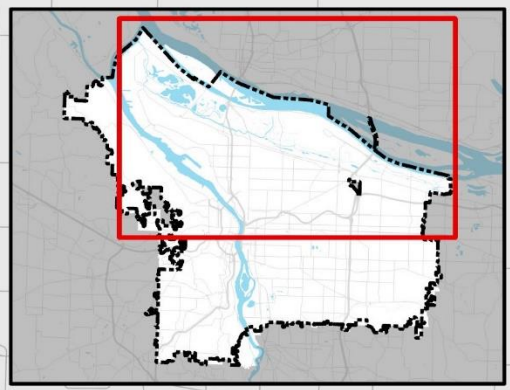
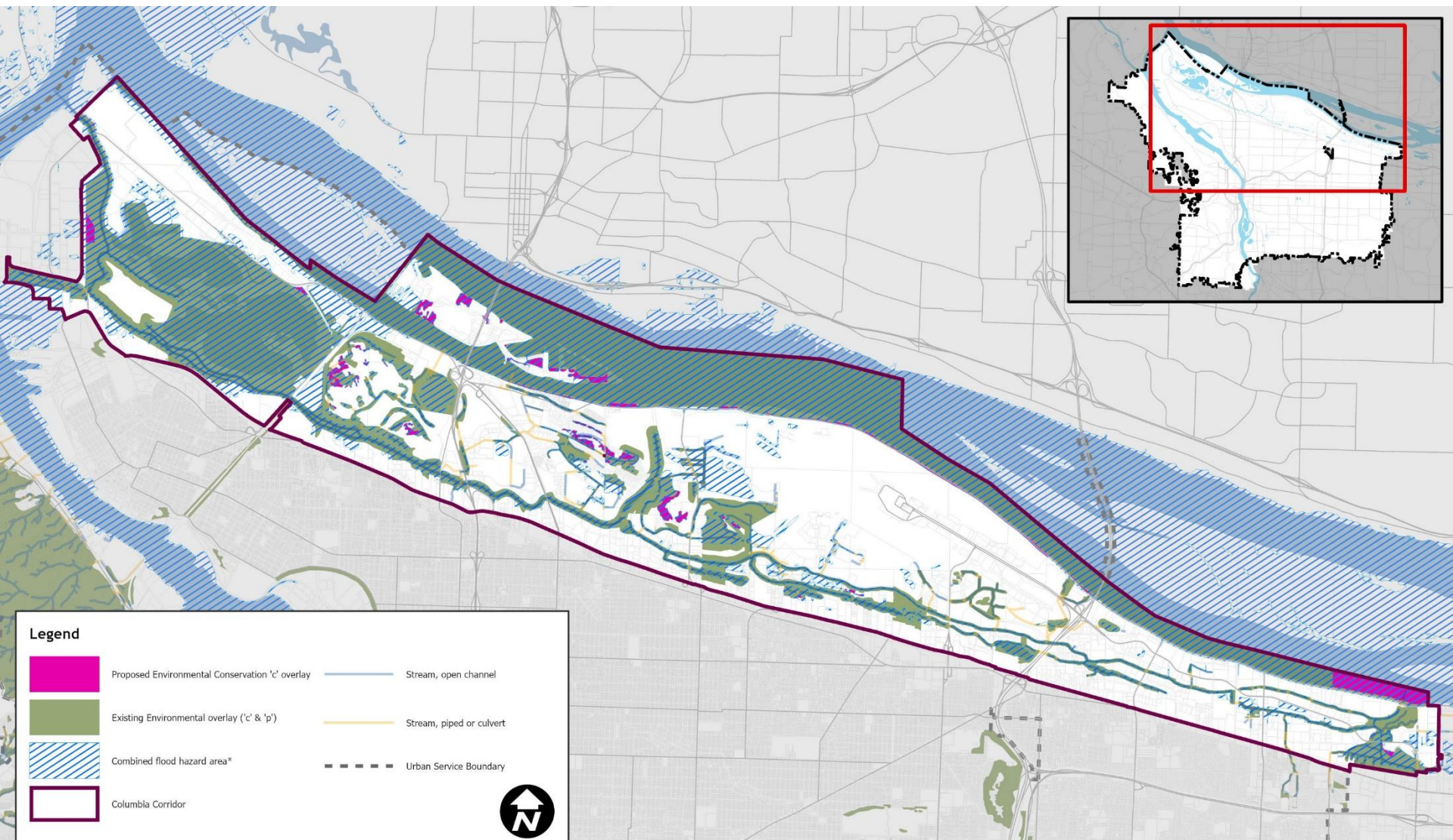
- Proposed River Environmental 'e' overlay
- Existing River Environmental 'e' overlay
- Combined flood hazard area*
- Central City Plan District
- South Waterfront Subdistrict



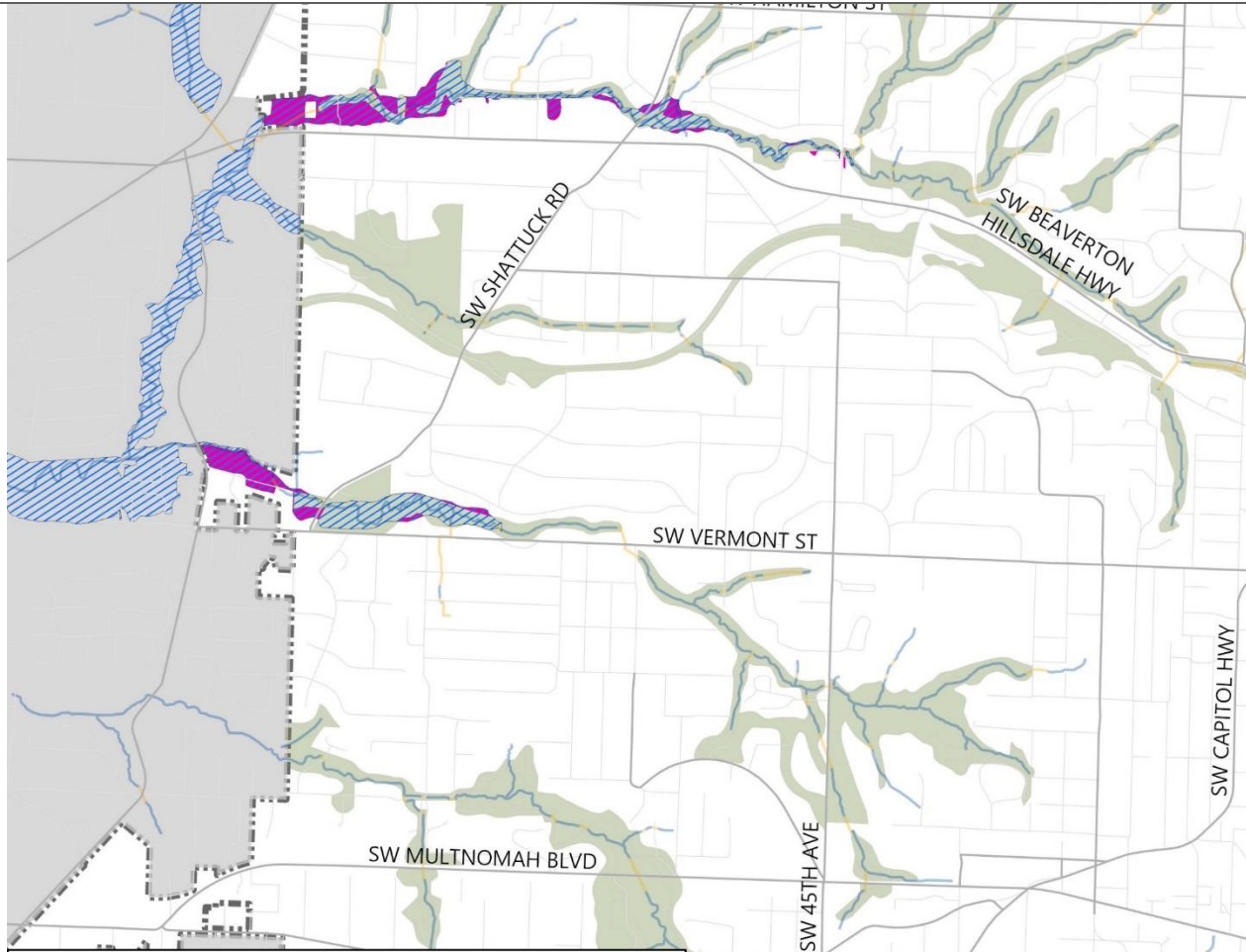




Proposed Environmental Conservation Overlay in the Columbia Corridor





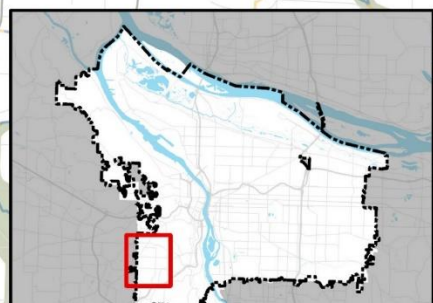
Proposed Environmental Conservation Overlay Zone along Fanno Creek



Legend

- Proposed Environmental Conservation 'c' overlay
- Existing Environmental overlay ('c' & 'p')
- Combined flood hazard area*
- City Boundary
- Stream, open channel
- Stream, piped or culvert

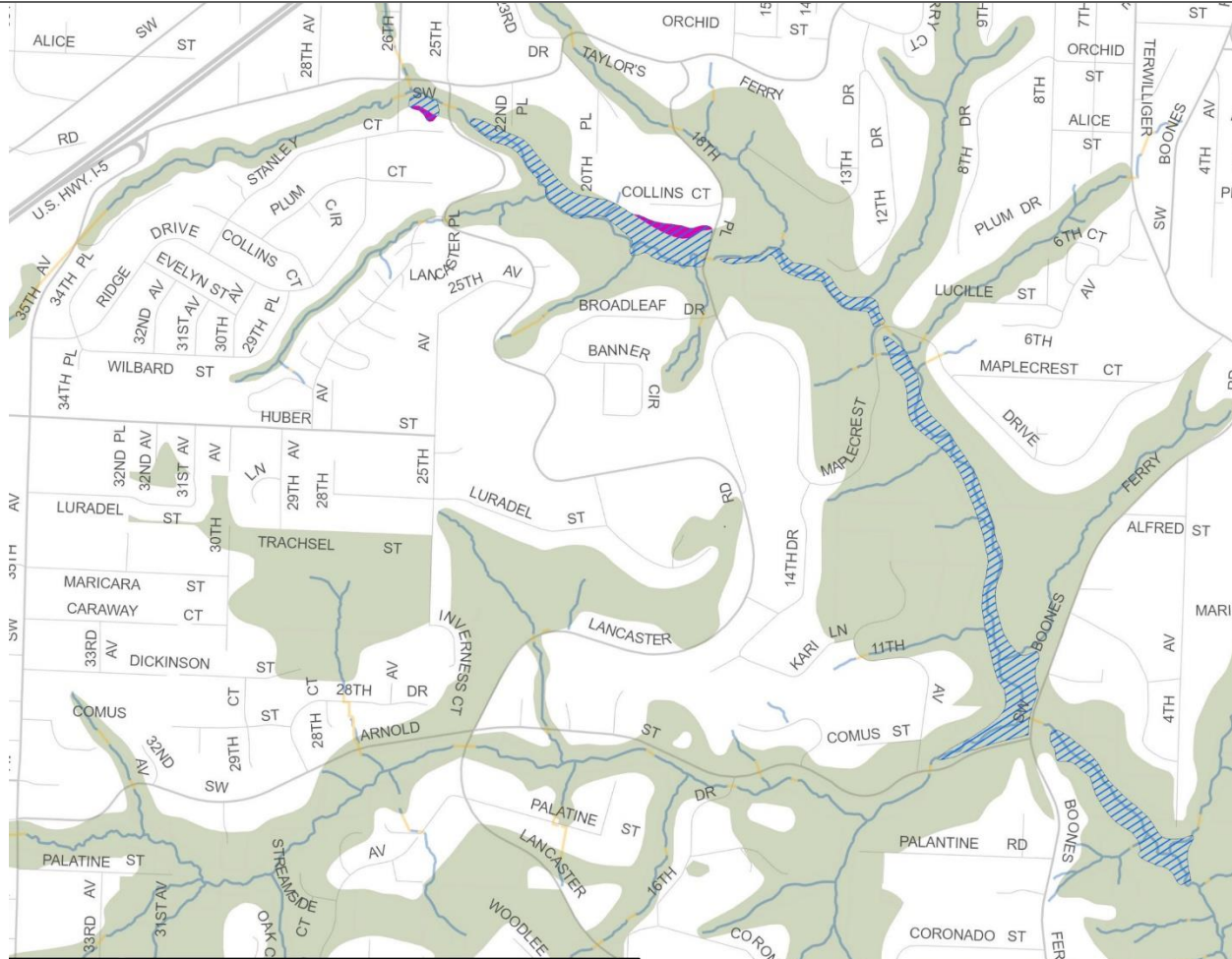


 Miles








THE
PLANNING
SOLUTIONS
CENTER

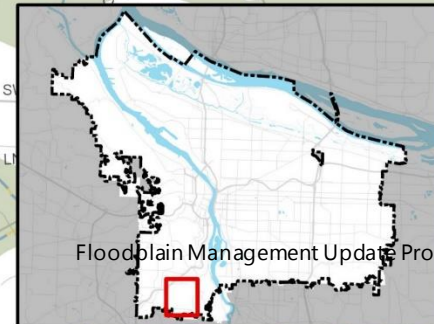
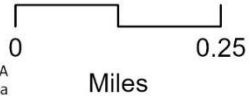
* Combined flood hazard area is comprised of the FEMA 100-year floodplain and the 1996 Flood Inundation Area

Proposed Environmental Conservation Overlay Zone along Tryon Creek



Legend

-  Proposed Environmental Conservation 'c' overlay
-  Existing Environmental overlay ('c' & 'p')
-  Combined flood hazard area*
-  Stream, open channel
-  Stream, piped or culvert



THE
PL
SU

* Combined flood hazard area is comprised of the FEMA 100-year floodplain and the 1996 Flood Inundation Area

Building Code (Title 24)

Citywide (some exceptions)

- Increase excavation ratios
 - High hazard area (2:1)
 - Undeveloped floodplain and Riparian buffer area (1.5:1)
- Excavation required in rest of floodplain unchanged (1:1)



Threatened and Endangered Species in Portland's Waterways

